

TECTUM Finalé Fabri-Tough Wall Panels

Abuse-resistant Tectum Finalé Fabri-Tough panels have a greater noise absorption than their sister panel, Fabri-Tough. Finalé Fabri-Tough panels combine 1" Tectum panels along with 1" Tectum furring with the cavity filled with a SoniCor Fiber core. The face of the panel is then wrapped with a durable fabric, making the panel one of the highest NRC abuse-resistant panels available.

Tectum Finalé Fabri-Tough panels are the ideal solution for controlling noise efficiently, economically and attractively in any area where abuse resistance and decorative panels are needed. These panels are priced competitively and will last longer than ordinary, soft core panels.

The facing consists of either HytexRib or Acoustical Renaissance fabrics composed of fibers that are manufactured from 100% post-consumer waste by EcoSpun®.

Tectum Finalé Fabri-Tough panels are tackable and tough. They can be used repeatedly as bulletin or display boards without visible effects.

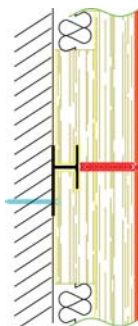
SIZES, FINISHES

Tectum Finalé Fabri-Tough wall panels are available in a variety of fabric colors. They are 24" wide with lengths of 48" up to 120". The overall thickness of the panels is 2".

SoniCor* FIBER

SoniCor, a completely green product produced from recycled materials, allows the Finalé product to contribute favorably to the recycled content portion of the LEED certification program. While the NRC remains at .85, the acoustical values at the lower frequencies have improved over the previous version of Finalé.

* SoniCor is a registered trademark of Concept Industries



Finalé Fabri-Tough Panels are mounted using a spline system

P.O. Box 3002
Newark, OH 43058

TECTUM^{INC}
The Noise Control Solution

105 S. 6th St.
Newark, OH 43055

TECTUM ACOUSTICAL PERFORMANCE

FINALÉ FABRI-TOUGH WALL PANEL SYSTEM

Panel Type	SOUND ABSORPTION COEFFICIENTS							NRC	MOUNTING
	125	250	500	1000	2000	4000			
Fabric-Wrapped 1" + 1" Furring and SoniCor Fiber	.33	.59	.90	.98	.85	.93	.85	A	

TECTUM PRODUCT

Panel Type	Nominal Thickness (inches)	Actual Size (inches)	Edge Detail	Factory Finish	Light Reflectance	Flame Spread	Weight LBS/SF
1"							
FINALÉ FABRI-TOUGH WALL PANEL SYSTEM							
Finalé Fabri-Tough	1	24" x 48 up to 120	Kerfed or Decor	Fabric Selection	N/A	0-25	2.70

ENVIRONMENTAL INFORMATION

The wood fibers (excelsior) used in Tectum panels come from Wisconsin Aspen trees. The Wisconsin Aspen is a self-propagating type tree. When cut, a new tree will begin to grow back from its root structure. In addition, all Wisconsin Aspen used for Tectum is air-dried. No drying kilns are used. The wood is stored in racks to age naturally. No chemicals are used in the production of any excelsior purchased by Tectum Inc.

All excelsior used in Tectum products comes from a single source that is affiliated with both the Forest Stewardship Council (FSC) and the Sustainable Forestry Initiatives (SFI) programs. These programs are a comprehensive system of objectives and performance measures that integrate the perpetual growing and harvesting of trees with the protection of wildlife, plants, soil and water quality. All loggers are trained to adhere to FSC and SFI principles.

Magnesium oxide is mixed with magnesium sulfate (Epsom salts) to form the primary binder. The magnesium sulfate solution has been manufactured on site by

reclaiming waste materials since production began in 1949. The secondary binder is composed of sodium silicate and calcium carbonate (limestone). All of the water used in the manufacture of Tectum is captured and recycled.

TECTUM PRODUCTS AND LEED

Tectum Inc. fully endorses the LEED Green Building Rating System.

Our products may contribute to the following LEED credit areas:

- EA Prerequisite 2: Minimum Energy Performance
- EA Credit 1: Optimized Energy Performance
- MR Credit 2: Construction Site Waste Management
- MR Credit 4: Recycled Content
- MR Credit 5: Regional Materials
- MR Credit 6: Rapidly Renewable Resources
- MR Credit 7: Certified Wood
- EQ Prerequisite 3 (LEED for Schools): Minimum Acoustical Performance
- EQ Credit 3.1 and 3.2: Construction IAQ Plans

EQ Credit 4.1: Low-Emitting Materials, Adhesives and Sealants

EQ Credit 4.4: Low-Emitting Materials, Composite Wood & Agrifiber Products

EQ Credit 10 (LEED for Schools): Mold Prevention

EQ Credit 11 (LEED for Schools): Low-Impact Cleaning and Maintenance Equipment Policy

ID Credit 1: Innovation in Design

Tectum products are listed in the GreenSpec Directory** published by Building Green from the editors of Environmental Building News.

For complete information about Tectum products and LEED, please see our Marketing Bulletins M-81 (Tectum Products and LEED Certification) and M-83 (Tectum Products and LEED Q & A) or our Environmental Statement. All of these materials are available online at www.tectum.com/leed.

*Trademark of The U.S Green Building Council

**Trademark of Building Green, Inc.