

ADHERE-IT® II

RINSEABLE CONDITIONER FOR BLACK EPDM SURFACES

Technical Data & Application Instructions

PRODUCT DESCRIPTION

ADHERE-IT II is a breakthrough product specifically developed for dramatically increasing the bond of UNITED'S **Roof Mate** Topcoat to new or weathered black EPDM surfaces. ADHERE-IT II is a low viscosity, pinkish liquid that chemically alters the black EPDM surface to which it is applied, creating a "lock and key" effect with the subsequent **Roof Mate** Topcoat. It is not recommended for use with acrylic basecoats or other acrylic topcoats, since without the "lock and key" effect there will be little or no improvement in the adhesion.

SURFACE PREPARATION

Remove heavy deposits of dirt, leaves, pine needles and other debris using a broom or air blower. Any rocks, branches or other large foreign objects should also be removed. ADHERE-IT II can be applied directly over black EPDM surfaces containing residual amounts of dirt, dust and other contamination.

APPLICATION

ADHERE-IT II is a ready-to-use material. It can be applied using a Hudson-type agricultural sprayer, as well as through conventional or airless spray equipment. Safety glasses with side shields and latex gloves are recommended when transferring ADHERE-IT II from the shipping container to the sprayer. If using a Hudson sprayer, adjust spray nozzle to achieve a uniform spray pattern with a 3 to 4 foot (1 to 1.3 m) arc. If using airless spray equipment, use a .015" to .019" (.3 to .4 mm) reversible tip with a 40 to 50° fan angle. Application rate is 500 sq. ft. per gallon (12.2 m²/l) over new or existing black EPDM surfaces. Over surfaces containing heavy deposits of dirt, wash first with **United Cleaning Concentrate (UCC)** prior to applying ADHERE-IT II.

<u>Light Dirt</u>	<u>Heavy Dirt</u>
<ol style="list-style-type: none"> 1) Apply ADHERE-IT II under low pressure 2) Power-rinse with clean water, holding tip within 12" (30 cm) of membrane. 	<ol style="list-style-type: none"> 1) Power-wash first with UCC 2) Apply ADHERE-IT II under low pressure 3) Power-rinse with clean water, holding tip within 12" (30 cm) of membrane.

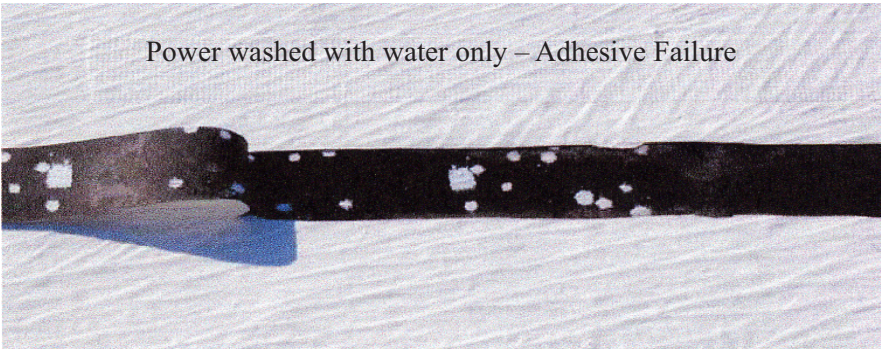


Allow **ADHERE-IT II** to stand a minimum of 20 minutes to wet out and react with the black EPDM surface. Clean the EPDM with fresh water using a minimum 2,500 psi (17,238 kPa) pressure washer. Begin the power rinse at the lowest point on the roof and work slowly upwards, keeping the pressure washer tip within 12" (30 cm) of the EPDM surface in order to remove mica and inorganic release agents. Once the highest point on the roof is reached, work down again with a final, clean water rinse. The final rinse can be done at a faster pace than the initial pressure wash, and the water should be clear with no soap bubbles present. After cleaning and rinsing, the roof should appear muddy brown to "jet black" in color, which is an indication that the surface has been chemically altered. Allow surfaces to dry thoroughly prior to application of the **Roof Mate** Topcoat.

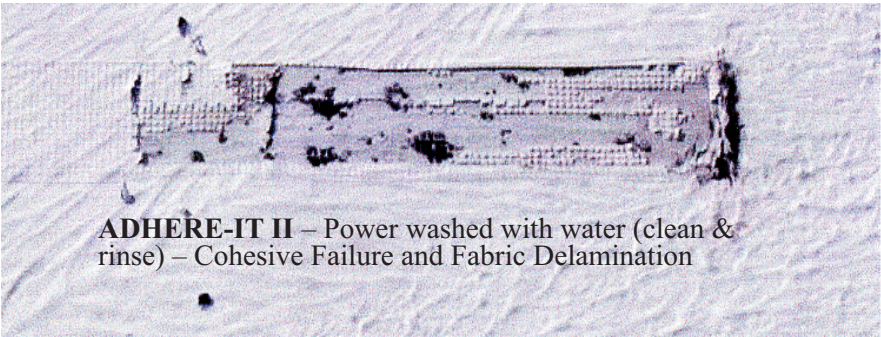
Clean equipment with water and biodegradable detergent, such as **UCC**, or equal. Purge the water from the pump and hoses using Mineral Spirits prior to storing for any length of time.

WET ADHESION RESULTS

No Treatment	-----	0.5 pli
ADHERE-IT II	-----	2.0 pli



Power washed with water only – Adhesive Failure



ADHERE-IT II – Power washed with water (clean & rinse) – Cohesive Failure and Fabric Delamination

LIMITATIONS & PRECAUTIONS

ADHERE-IT II will freeze and become unusable at temperatures below 32° F (0°C). Do not apply at temperatures below 40°F (4°C). Exercise caution when walking on wet roof surfaces, as they will be slippery. Wear rubber-soled shoes, stay away from roof edges and install proper roof perimeter safety barriers. **ADHERE-IT II** is a high pH material. Do not discharge directly into open water in undiluted form. Use protective goggles or glasses and latex gloves when handling. If material comes in direct contact with skin, wash immediately with soap and water. Avoid contact with eyes and mucous membranes. For additional information refer to the MSDS, or contact UNITED COATINGS Technical Service Department.

UNITED COATINGS **HYDROSTOP** LLC
2810 South 18th Place • Phoenix, AZ 85034
Phone: (480) 754-8900 • Fax: (480) 754-8939
(800) 541-4383 • www.questconstructionproducts.com



Our products are guaranteed to meet established quality control standards. Information contained in our technical data is based on laboratory and field testing, but is subject to change without prior notice. No guarantees of accuracy are given or implied, nor does UNITED assume any responsibility for coverage, performance or injuries resulting from storage, handling or use of our products. Liability, if any, is limited to product replacement or, if applicable, to the terms stated within the executed project warranty.