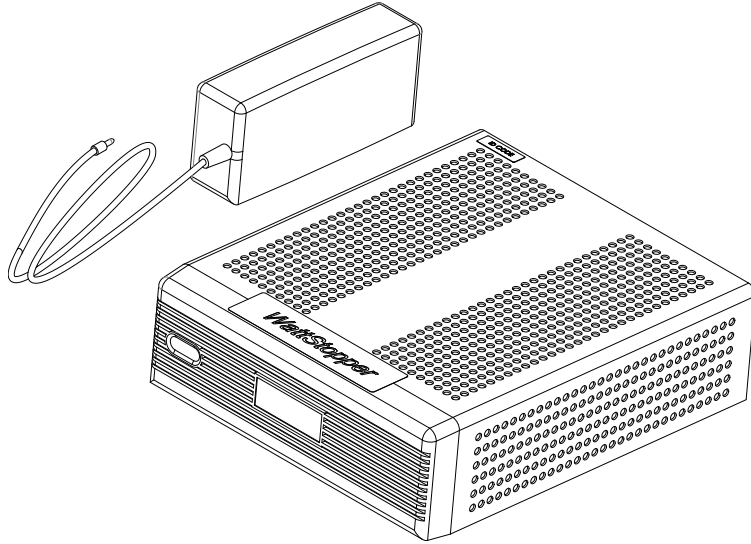


WebLink Network Appliance for LI Complete Control Installation and Setup Manual



SPECIFICATIONS

Includes AC Adapter:Input (AC 100~240 V)
USB port, Serial DB9 connector - for connection to HLINK
10/100 RJ45 Ethernet LAN
Dimensions: 7.5" x 8.5" x 2.5" (190.5 mm x 215.9 mm x 63.5 mm)
Shipping weight:..... 3.2 lbs (4.5 kg)
Other: 1-year warranty

WattStopper[®]

Installation Instructions

UNIT DESCRIPTION

The WebLink Network Appliance is one option for connectivity between a standard IP network and a Lighting Integrator (LI) panel network. It enables multiple users to access and control a network of LI Complete Control (LIC) panels from any location on an Ethernet network (e.g., LAN, WAN or internet).

WebLink connects to and automatically maintains communications directly with a LIC network through a Data Communications Link (HLINKCC) serial connection. The WebLink software provides web browser-based access to panels on the network for viewing panel status and overriding relays. It allows panel network connectivity to be shared among multiple user connections for simultaneous access, providing an IP connection to other installations of WinControl software on remote PCs over a dedicated or enterprise LAN or WAN.

WEBLINK SCHEDULER SOFTWARE

With the WebLink Scheduler Software, users can employ their browser instead of WinControl to schedule a full calendar. Annual, monthly, weekly and daily calendars are displayed to multiple PCs as web pages. Users can set up new events for any time period by selecting a specific date, time and action, or easily perform modifications of one-time or recurring events. Schedule templates enable creation and storage of alternative schedules for special events that need unique lighting scenarios, an ideal feature for convention and multi-use centers, stores and arenas.

The screenshot displays the WebLink Scheduler software interface for July 22, 2004. The interface is divided into several sections:

- Home**: The main title bar.
- Scheduler - July 22, 2004**: The main header for the current date.
- Recent Actions**: A table listing actions performed on previous days (July 21 and July 22, 2004). Each row includes a timestamp, a description of the action, and the user 'scheduler'.
- Day's Actions**: A table listing actions scheduled for the current day (July 22, 2004). Each row includes a timestamp and a description of the action.
- Templates**: A section for updating templates used to group lighting actions.
- Time Settings**: A section for setting the current time and other parameters.

Recent Actions			Day's Actions	
Jul 21 19:55	Dusk Lighting	scheduler	02:31	Service vehicle Parking Off
Jul 21 19:55	SwitchCode {900.5} 17-E-EXTERIOR (PC ONLY), Level on	scheduler	05:31	Cafeteria Lights On
Jul 21 19:55	SwitchCode {900.8} 22-P-PARKING LOT (PC ONLY), Level on	scheduler	05:53	Dawn Lighting
Jul 21 21:31	2nd Floor E Agriculture Off	scheduler	06:01	Garage Reduced Lighting Level
Jul 21 22:01	Test	scheduler	06:01	Service vehicle Parking On
Jul 21 22:01	Garage Reduced Lighting Level Off	scheduler	08:01	Turn on lights Mon-Fri
Jul 21 22:01	Rotunda Off	scheduler	13:36	ron jammers test
Jul 22 02:31	Service vehicle Parking Off	scheduler	16:30	Cafeteria Lights Off
Jul 22 04:53	SwitchCode {900.2} 14-B-BALCONY LIGHTS, Level on	scheduler	17:30	lab
Jul 22 04:53	SwitchCode {900.9} 23-W-ROTUNDA (SCH/PC ON IN EVENING), Level on	scheduler	18:00	General Office Off
Jul 22 05:31	Cafeteria Lights On	scheduler	19:30	Service vehicle Parking Off
Jul 22 05:53	Dawn Lighting	scheduler	19:30	e.vnz.ncv.c
Jul 22 05:53	SwitchCode {900.2} 14-B-BALCONY LIGHTS, Level off	scheduler	19:53	Dusk Lighting
Jul 22 05:53	SwitchCode {900.5} 17-E-EXTERIOR (PC ONLY), Level off	scheduler	21:30	2nd Floor E Agriculture Off
Jul 22 05:53	SwitchCode {900.8} 22-P-PARKING LOT (PC ONLY), Level off	scheduler	22:00	Rotunda Off
Jul 22 06:01	Service vehicle Parking On	scheduler	22:00	Garage Reduced Lighting Level Off
Jul 22 06:01	Garage Reduced Lighting Level	scheduler	22:00	Test

Call 800.879.8585 for Technical Support

INSTALLATION AND SETUP MANUAL

Setting Up The Hardware

Step 1: If you wish to set a static IP address on the machine, then you will have to plug a monitor and keyboard into the computer. You can do this step without plugging into the panel or actual network. (See Appendix A.)

Step 2: Make sure that the link cable, power and network cables are plugged in correctly.



**Use this port to
connect to LAN**

Step 3: If you know the IP address assigned to the WebLink, you should be able to connect to it now. If you do not know the address, you can see it by plugging in a monitor to the machine. You will see a display like this:

```
IP-ADDRESS: 192.168.1.75
MAC: 00:60:63:8A:9D:CA
twS-weblink-#### login:
```

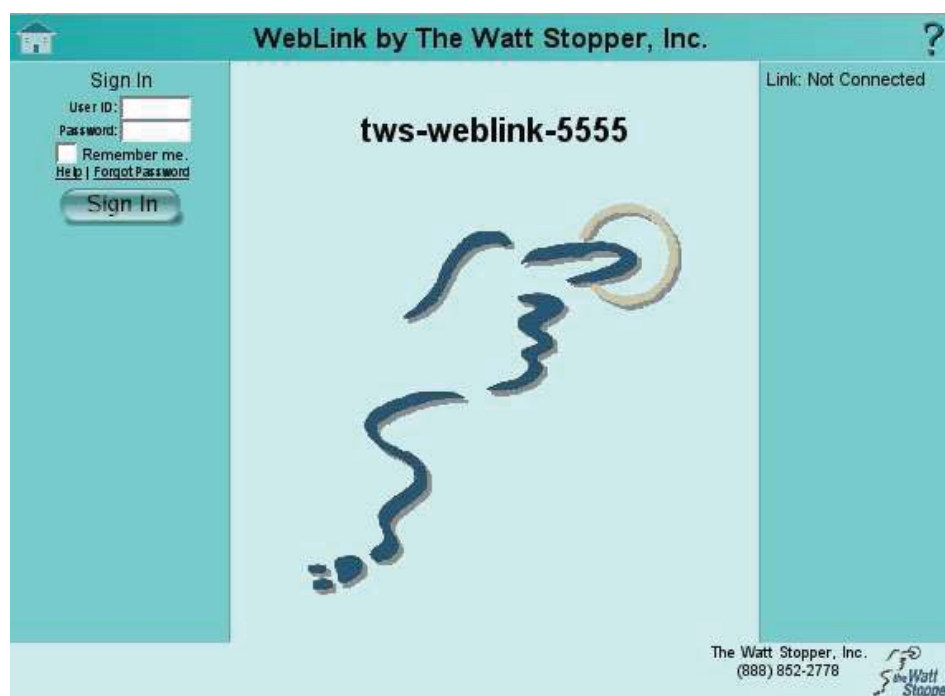
SETTING UP THE SOFTWARE

Step 1: Log into the WebLink from a web browser

Many installations will require you to type in the numeric address. From the example above, that would be <http://192.168.1.75>. The default user name is 'admin' and the password is 'link0002' (those are zeros).



**IMPORTANT NOTE: ALWAYS CHANGE
THE ADMIN PASSWORD**



Step 2: In the administration section, set the site information by clicking on the edit button. On this screen you are able to add text for a message that will appear below the image on the main page. Also, you can insert your own image for the start page.

Note: Be careful not to use an image that is too large. It is best to size your image to 320x240.

Call 800.879.8585 for Technical Support



Step 3: Set the Date/Time of the WebLink by clicking the Date/Time link at the top of the Administration section. There are four settings on this page:

1. Current Time: This should match the current time for your location
2. Time Zone: Please pick a place city/region that matches your time zone and daylight savings settings.
3. Latitude / Longitude - You may copy the settings from WinControl, since it allows you to pick your location by city.
4. Time Server If your network has an NTP time server that will keep all the computer clocks synchronized, you may enter its address here. When you click on the Set Server button, the WebLink will verify that the time server is functioning before accepting the setting.

Heib admin Log Out Administration ?

Admin Settings Date/Time Remote Access User Admin Roles Status

System Identifier	tws-weblink-5555
Software Version	0.21
Site Name	
Customer Name	
Contact Name	
Phone Number	
Email	

Edit

Maintenance

Logs	View activity logs of the WebLink.
Reboot	Reboot the WebLink Appliance
Site File	Upload/Download Site File Configuration
Update/Backup	Weblink System Software

Download latest [WinControlSetup-2.00.308.exe Changes](#)

The Watt Stopper, Inc.
(888) 852-2778

Step 4: Make changes to the WebLink's Settings

- Minimum Password Length - If set to zero, a user may have a blank password.
- Maximum Override Duration - This will restrict, system wide, the maximum duration of an override on the WebLink. You may want to use the Roles to restrict override duration instead.
- Override Frequency - If you are using My Lights, you will set the override frequency of the Desktop Override here.
- Demo Mode - This will restrict the WebLink from sending any scheduled actions or overrides to the data line.
- Watchdog Device - Set this device to have the WebLink send an On to a particular device every minute. You can then wire up a light, horn, etc. to the relay to notify if the WebLink ceases to function for whatever reason.

Call 800.879.8585 for Technical Support

TROUBLESHOOTING WEBLINK

WinControl is Not Connecting

1. Try connecting to the WebLink with a browser. (Internet Explorer, Firefox, Netscape)

For the URL use the address of the WebLink. From our example. <http://192.168.1.75>

You should see the main WebLink screen



2. If the screen doesn't appear, then try to 'ping' the machine. To do so, go to a DOS prompt. (In Windows 2K/XP, go to Start>Run and type 'cmd' and hit Enter.) Then type ping and the address at the '>' prompt. For the example machine, this would look like:
> ping 192.168.1.75
3. If ping does work, then try to test the panel connection as described in Appendix B.

Ordering Information

Catalog No.

Description

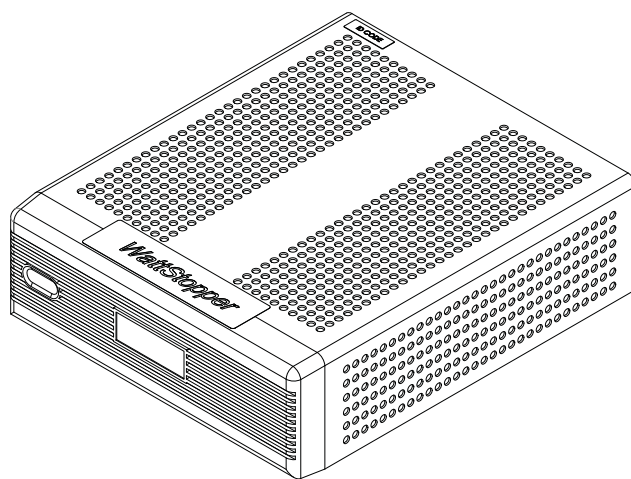
<input type="checkbox"/> WL-BASE	WebLink Network Appliance with AC adapter
<input type="checkbox"/> WL-OPTSCHED	WebLink Scheduler Software (browser-based)
<input type="checkbox"/> WL-MYLIGHTS	My Lights Software for personal desktop PC control and override
<input type="checkbox"/> WL-RACKSHELF	Black Shelf for rack mounting up to 50 lbs., 5.25"x17.25"x12.13" (133.4mm x 438.2mm x 308.1mm) HxWxD
<input type="checkbox"/> WL-UPS	UPS backup for WebLink

Call 800.879.8585 for Technical Support

APPENDIX A

Setting Up Network Manually

Step 1: Plug a monitor, keyboard and power into the back of the WebLink.

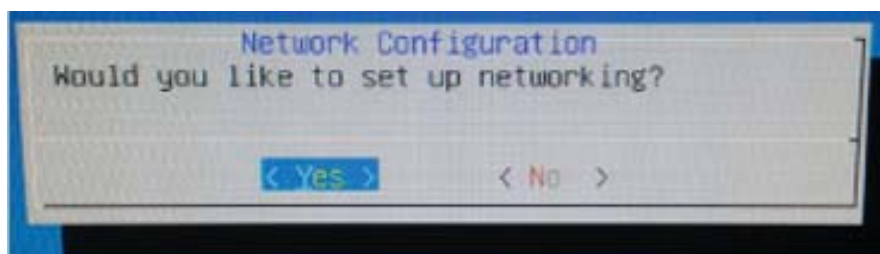


Step 2: Now, login as the install user and select choice 2) netconfig.

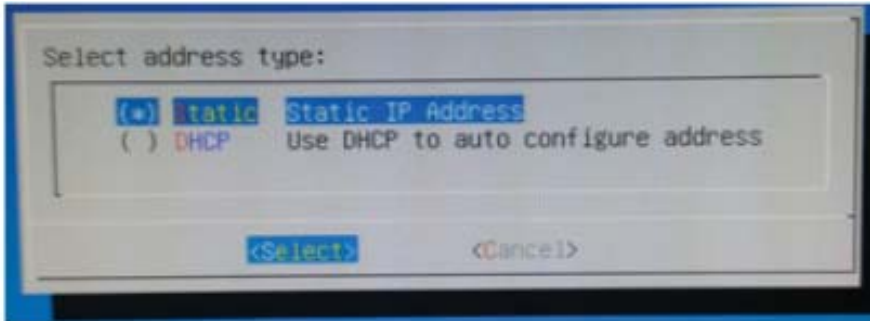
```
IP-ADDRESS: 192.168.1.75
twS-weblink-#### login: install
password:
Welcome to Ubuntu 12.04.2 LTS (GNU/Linux 3.5.0.37-generic)
* Documentation: http://help.ubuntu.com/

Please select an action:
1) timeconfig
2) netconfig
3) shownetconfig
4) reboot
5) shutdown
6) admin
7) quit
choice?2
```

Step 3: Say “Yes” to setting up networking at the Network Configuration prompt.



Step 4: At the Address type prompt, select "Static IP Address" and choose Select.



Step 5: When you return to the prompt, select choice 4) reboot to reboot your computer.

```
IP-ADDRESS: 192.168.1.75
twS-weblink-#### login: install
password:
Welcome to Ubuntu 12.04.2 LTS (GNU/Linux 3.5.0.37-generic)
* Documentation: http://help.ubuntu.com/

Please select an action:
1) timeconfig
2) netconfig
3) shownetconfig
4) reboot
5) shutdown
6) admin
7) quit
choice?4
```

Call 800.879.8585 for Technical Support

APPENDIX B - TESTING CONNECTION TO PANEL WITHOUT WINCONTROL

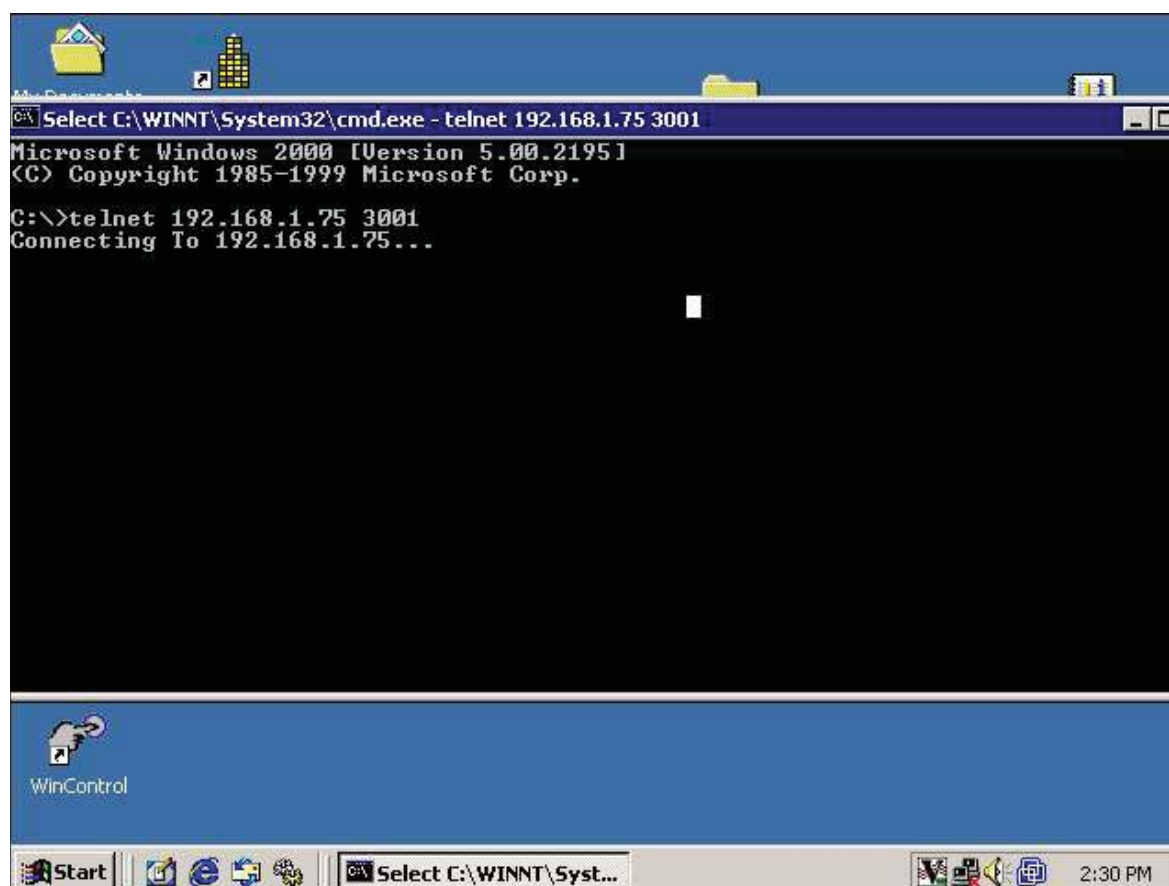
From within Windows, start a dos prompt. From Windows 2000/XP, go to the start menu and select "Run". In the dialog type "cmd" and press enter. This should bring up a black DOS window.

In the dos window, use the telnet command to access the WebLink. From the DOS prompt type in the following telnet command:

```
telnet <address> <port>
```

To test that the WebLink is available, you would type this if the WebLink address were:

```
192.168.1.75.
```



You will see a blank screen. Press enter a couple times. You will see one of the two lines below.

```
LAP 0001 W03.008
```

```
RAP 0001 W03.008
```

If you see nothing after pressing enter three times, then there is possibly a communication problem.


To exit type ctrl-]. You will be at the "telnet>" prompt. Type "quit" and press enter. Type exit to get rid of the DOS prompt.

WARRANTY INFORMATION

WattStopper warrants its products to be free of defects in materials and workmanship for a period of one (1) year. There are no obligations or liabilities on the part of WattStopper for consequential damages arising out of, or in connection with, the use or performance of this product or other indirect damages with respect to loss of property, revenue or profit, or cost of removal, installation or reinstallation.

WattStopper[®]

2800 De La Cruz Boulevard, Santa Clara, CA 95050
800.879.8585 • www.wattstopper.com

A Group brand |  **legrand**

Please
Recycle

