



**The Williams Bros.
Corporation of
America**

**Roof Hatches
Floor Doors
Basement Doors
Access Ladders
Guard Railing**

Roof and Floor Access Division

**WB 501 & 500
Fixed Aluminum
Access Roof
Hatch Ladders**

21 7/8"
18 3/8"
SAFETY GAP
3/16" ALUM. WALL BRACKET
TYP. ALUMINUM SERRATED RUNGS 1 1/4"
WB Roof Hatch

**WB Type T
Roof Hatch**

**WB Type SV
Fire Vent**

**WB Residential
Basement Doors**

WB Guard Railing System

**WB-Type K
Hatches**

**WB Commercial
& Residential
Attic Ladders**

4" x 1 3/8" 3/16" ALUM. ANG FLOOR BRACKET

ROOF HATCH

12" (VERIFY)
8"

WB 501 & 500 LADDER HEIGHT (A) VERIFY! EQUAL SPACES AT 12" O.C.

VARIES

F.F. TO TOP OF VERIFY

Dedicated to Quality



**The Williams Bros.
Corporation of
America**

See our full product line and download
submittals and CAD drawings at

www.wbdoors.com

- Warranties are available upon request on all of our products listed.
- CALL for special size requirements on all Roof and Floor Hatches.

PLEASE NOTE: We have made every effort to make this catalog complete and accurate. We reserve the right, however, to make changes at any time, without notice, in prices, materials, equipment, specifications, models and availability.

Specifications, dimensions, measurements, and other numbers in this catalog and other printed materials provided regarding these products are approximates based upon design and engineering drawings and prototypes. Your specific door may differ slightly due to variations in manufacturing and equipment.

In addition, some information may have been updated since the time of printing. Please contact customer service for complete details on all products.

PRODUCT SECTIONS:

Commercial Roof & Floor Access Hatches • pages 3 - 8

Residential Basement Access Doors • pages 9

Commercial/Residential Access Ladders • pages 10 - 11

Purchase Your Complete Roof and Floor Access System from Williams Brothers Corp. of America

Williams Brothers has your complete roof and floor access needs under one roof. Order all your roof and floor hatches, fixed access ladders, attic access ladders and the safety guard railing system with one toll free call: 1-800-255-5515



Call or go online
to receive our **WB
PREMIUM METAL
ACCESS DOORS**
Catalog at
www.wbdoors.com
800-255-5515

You can also **Download** our
Strike First FIRE PROTECTION
Catalog and our **Strike First
SAFETY PRODUCT DIVISION** Catalog
at www.strikefirstusa.com



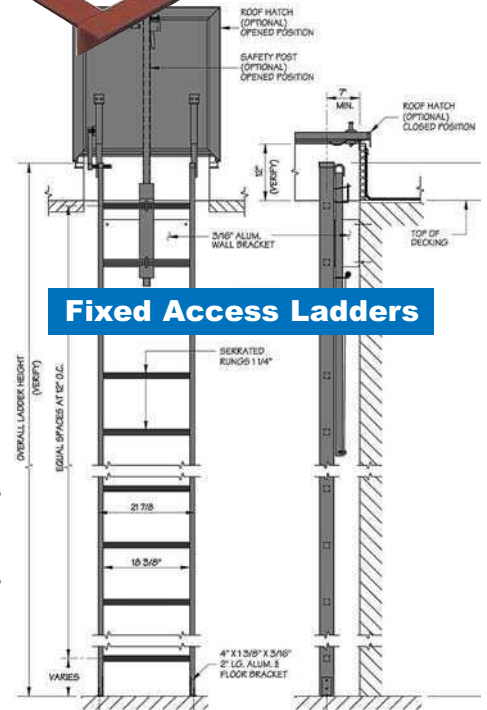
Roof & Floor Hatches



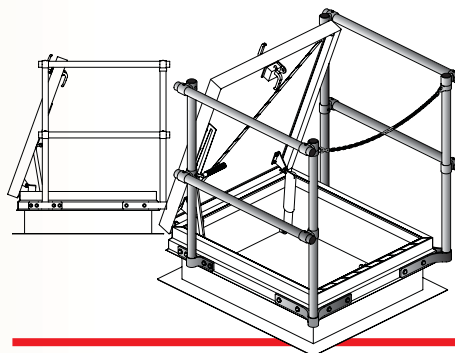
Attic Access Ladders



Fixed Access Ladders



Hatch Railing Guards



WB Roof Hatch

www.wbdoors.com

This newly re-designed WB Roof Hatch offers improved features such as a heavier duty lock and handle assembly, heavy gauge, weather-resistant gasketing and fully concealed hinge hardware located on the interior making rust unlikely. Pre-lubricated compression springs, encased in zinc-plated telescopic tubes held in place by 3-sided welded brackets. Durable and re-coatable gray primer comes standard. Add this high quality WB Roof Hatch to your product line today!

Construction Features:

- 14 gauge galvanized steel
- Durable re-coatable gray primer finish
- Highly visible safety caution striping
- Heavy duty lock and handle
- Weather-resistant gasketing
- Available in many sizes
- Finest quality and workmanship

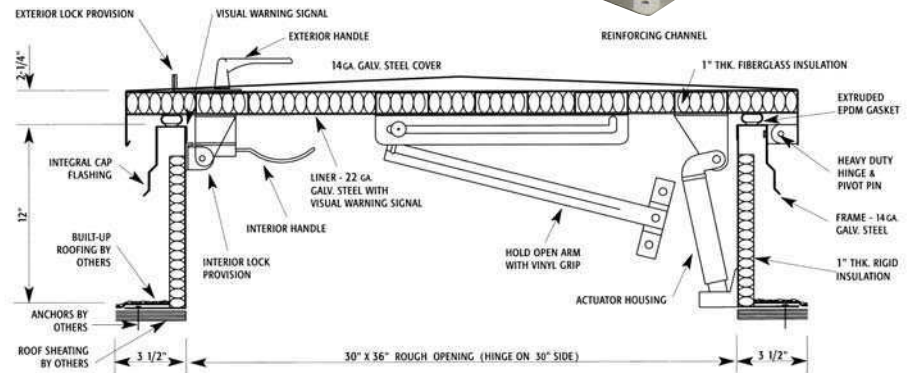
Order a Sample 18 x 18 for an Excellent Show Room Tool to Promote Your Sales! (additional cost)

Item #	Size in Inches W x H	Shipping Wt. Lbs.
WB RH 36 x 30 Steel*	36 x 30	151
WB RH 30 x 54 Steel*	30 x 54	198
WB RH 36 x 36 Steel*	36 x 36	167
WB RH 48 x 48 Aluminum	48 x 48	

*Stock item



SECTION DETAIL:



WB Type S & E Roof Hatch

www.wbdoors.com

The easy one-hand operation to the fully open or closed position provides the user the security of having one hand firmly on the ladder at all times. Available in galvanized steel, aluminum, or stainless steel construction. By Bilco.

Construction Features:

Material—Steel: Cover and frame are 14 gauge G-90 paint bond galvanized steel

Aluminum: Cover and frame are 11 gauge aluminum

Stainless Steel: Cover and frame are 14 gauge Type 304 stainless steel

Cover Breakformed, hollow-metal design with 1" concealed fiberglass insulation, 3" beaded, overlapping flange

Curb 12" in height with integral capflashing, 1" fiberglass insulation

Gasket Extruded EPDM rubber gasket permanently adhered to cover

Hinges Heavy-duty pintle hinges with 3/8" Type 316 stainless steel hinge pins

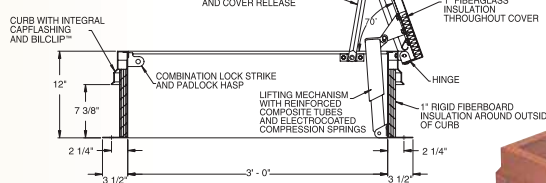
Latch Slam latch with interior and exterior turn handles and padlock hasps

Lift Assistance Compression spring operators enclosed in telescopic tubes

Finish—Steel: Alkyd base red oxide primer.

Aluminum: Mill finish. **Stainless Steel:** Type 304 stainless steel with sandblast finish

SECTION DETAIL:



Specifications Available



Item #	Size in Inches W x H	Shipping Wt. Lbs.
S-20 Steel*	36 x 30	168
S-50 Aluminum*	36 x 30	135
E-20 Steel	36 x 36	192
E-50 Aluminum	36 x 36	117

*Stock item

WB Type DSH Automatic Fire Vent

www.wbdoors.com

DSH series fire vents are available in a number of standard UL-listed and FM-approved sizes. Features include fully insulated covers and galvanized steel or aluminum construction. By Bilco.

Construction Features:

Material—Steel: Cover and frame are 14 gauge G-90 paint bond galvanized steel

Aluminum: Cover and frame are 11 gauge aluminum

Covers Breakformed, hollow-metal design with 1" concealed fiberglass insulation, 3" beaded, overlapping flange, fully welded at corners, and internally reinforced for 40 psf (195 kg/m²) live load

Curb 12" in height with integral capflashing, 1" fiberboard insulation, fully welded at corners, and 3-1/2" mounting flange with 7/16" holes provided for securing frame to the roof deck

Gasket Extruded EPDM rubber gasket permanently adhered to the covers

Hinges Heavy-duty pintle hinges with 3/8" Type 316 stainless steel hinge pins

Latch Positive hold/release mechanism controlled by a single UL-listed 165°F (74°C) fusible link with a separate latching point for each cover. Designed to hold the covers closed against a 90 psf (438 kg/m²) wind uplift force.

Performance Ratings UL-listed and FM-approved. Comply with UL 790 Class A (burning brand test).

Finish—Steel: Alkyd base red oxide primer, **Aluminum:** Mill finish

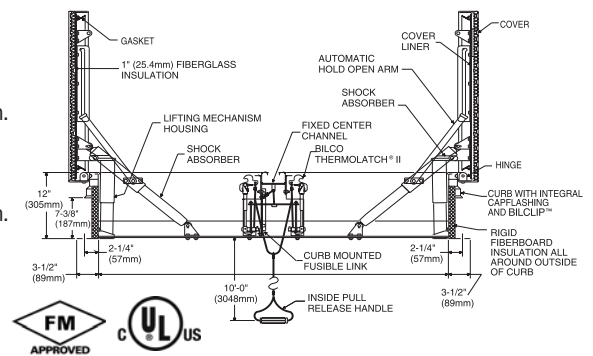
Hardware—Steel: Engineered composite compression spring tubes. Steel compression springs with electrocoated acrylic finish. All other hardware is zinc plated/chromate sealed. **Aluminum:** Engineered composite compression spring tubes. Steel compression springs with electrocoated acrylic finish. Type 316 stainless steel hinges. All other hardware is zinc plated/ chromate sealed.

Item #	Size W x H	Shipping Wt. Lbs.
DSH4848 Steel	48 x 48	367
DSH4872 Steel	48 x 72	455
DSH4890 Steel	48 x 60	695
DSH4896 St Curb-Al Cvr	48 x 96	485
DSH6060 Aluminum	60 x 60	330

Specifications Available



SECTION DETAIL:



WB Type SV Fire Vent

www.wbdoors.com

For applications requiring smaller vents, single leaf models are available in galvanized steel or aluminum construction and can be provided with polycarbonate domes for added daylight. By Bilco.

Construction Features:

Material—Steel: Cover and frame are 14 gauge G-90 paint bond galvanized steel **Aluminum:** Cover and frame are 11 gauge aluminum

Cover Breakformed, hollow-metal design with 1" concealed fiberglass insulation, 3" beaded, overlapping flange, fully welded at corners, and internally reinforced for 40 psf (195 kg/m²) live load

Gasket Extruded EPDM rubber gasket permanently adhered to the cover

Hinges Heavy-duty pintle hinges with 3/8" Type 316 stainless steel hinge pins

Latch Positive hold/release mechanism controlled by a single UL-listed 165°F (74°C) fusible link. Designed to hold the cover closed against a 90 psf (438 kg/m²) uplift force.

Performance Rating Comply with UL 790 Class A (burning brand test)

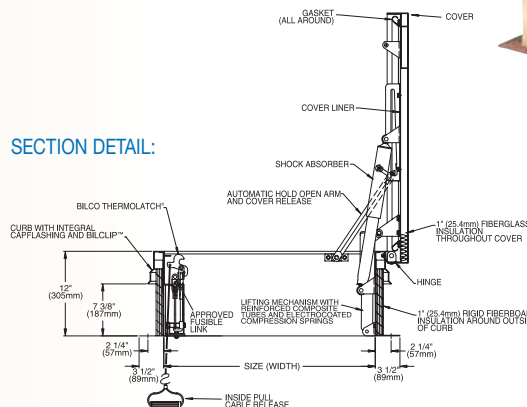
Finish—Steel: Alkyd base red oxide primer; **Aluminum:** Mill finish

Item #	Size W x H	Shipping Wt. Lbs.
S-20SV Steel	36" x 30"	193
NB-20SV Steel	30" x 54"	260
L-20SV Steel	30" x 96"	423
S-40SV St Curb-Al Cvr	36" x 30"	160
NB-40SV St Curb-Al Cvr	30" x 54"	215
L-40SV St Curb-Al Cvr	30" x 96"	315
S-50SV Aluminum	36" x 30"	112
NB-50SV Aluminum	30" x 54"	155
L-50SV Aluminum	30" x 96"	240

Specifications Available



SECTION DETAIL:



Hardware—Steel: Engineered composite compression spring tubes. Steel compression springs with electrocoated acrylic finish. All other hardware is zinc plated/chromate sealed. **Aluminum:** Engineered composite compression spring tubes. Steel compression springs with electrocoated acrylic finish. Type 316 stainless steel hinges. All other hardware is zinc plated/chromate sealed.

WB Type FR & FRLC Fire Rated Floor Hatch

www.wbdoors.com

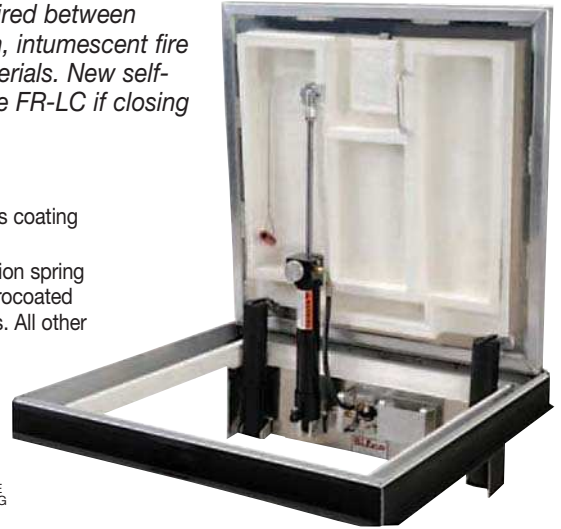
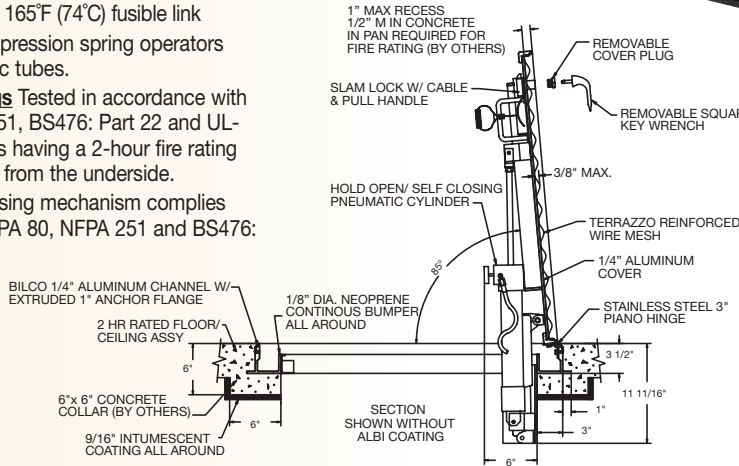
Maintains the fire rating of a 2-hour floor/ceiling assembly where access is required between building floors. Features include an optional UL Listed automatic closing system, intumescent fire resistant coating, and a pan cover designed to accept architectural flooring materials. New self-closing mechanism with simplified design takes up less frame area. Specify Type FR-LC if closing mechanism is not required by local fire authorities having jurisdiction. By Bilco.

Construction Features:

- Material** Cover and frame are 1/4" aluminum
- Cover** Aluminum plate reinforced for 150 psf (732 kg/m²) live load
- Frame** Extruded aluminum frame with built in anchor flange around the perimeter
- Hinges** Continuous heavy-duty Type 316 stainless steel hinge
- Latch** Pneumatic self closing system that automatically closes the door in the event of a fire when heat parts a UL-listed 165°F (74°C) fusible link
- Lift Assistance** Compression spring operators enclosed in telescopic tubes.
- Performance Ratings** Tested in accordance with ASTM E119, NFPA 251, BS476: Part 22 and UL-listed (File R15197) as having a 2-hour fire rating when exposed to fire from the underside.
- Compliance** Self-closing mechanism complies with ASTM E119, NFPA 80, NFPA 251 and BS476: Part 22

- Finish** Mill finish aluminum with a bituminous coating applied to the exterior of the frame
- Hardware** Engineered composite compression spring tubes. Steel compression springs with electrocoated acrylic finish. Type 316 stainless steel hinges. All other hardware is zinc plated/chromate sealed.

SECTION DETAIL:



Specifications Available

Item #	Size W x H	Shipping Wt. Lbs.
FR-2 Aluminum	30 x 30	271
FR-3 Aluminum	36 x 30	277
FR-4 Aluminum	36 x 66	326
FR-5 Aluminum	42 x 42	368
FR-6 Aluminum	30 x 48	328

FR-LC available upon request if closing mechanism is not required by local fire authorities having jurisdiction

WB Type J & JD Floor Hatch

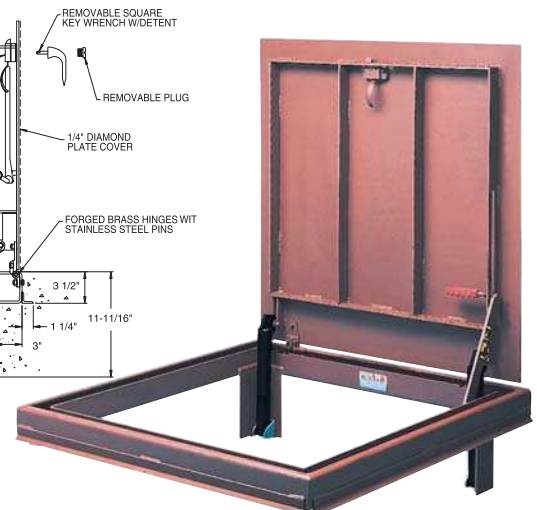
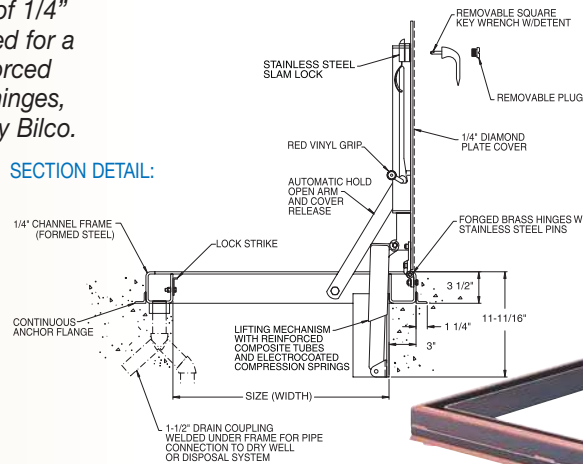
www.wbdoors.com

Single or double leaf covers are constructed of 1/4" (6.35mm) diamond pattern plate and reinforced for a 300 lb/ft² (1464 kg/m²) liveload. Features reinforced composite spring tubes, heavy forged brass hinges, and zinc plated/chromate sealed hardware. By Bilco.

Construction Features:

- Material** Cover and frame are 1/4" steel
- Cover** Diamond-pattern tread plate reinforced for 300 psf (1464 kg/m²) live load
- Frame** Formed channel frame with full anchor angle welded around the perimeter. A 1-1/2" drain coupling is welded under the frame for a pipe connection to a dry well or disposal system.
- Hinges** Heavy forged brass hinges with 3/8" Type 316 stainless steel hinge pins
- Latch** Type 316 stainless steel slam lock with fixed interior handle and removable exterior turn/lift handle. Latch release is protected by a flush, gasketed, removable screw plug
- Lift Assistance** Compression spring operators enclosed in telescopic tubes. Automatic hold-open arm with grip handle release.
- Finish** Alkyd base red oxide primer
- Hardware** Engineered composite compression spring tubes. Steel compression springs with electrocoated acrylic finish. Slam lock and all fasteners are Type 316 stainless steel. All other hardware is zinc plated/chromate sealed.

SECTION DETAIL:



Specifications Available

Item #	Size W x H	Shipping Wt. Lbs.
J-1 Steel	24 x 24	50
J-2 Steel	30 x 30	65
J-3 Steel	36 x 30	77
J-4 Steel	36 x 36	86
J-5 Steel	40 x 40	109

JD available upon request (double leaf)

WB Type T & TD Floor Hatch

www.wbdoors.com

Aluminum non-drainage door accepts carpet and composition flooring material 1/8" or 3/16" in thickness. Single or double leaf doors are virtually hidden in interior applications. Features cover and frame mounted molding strips to accept floor covering and Type K hardware and construction. By Bilco.

Specifications Available

Construction Features:

Material Cover and frame are 1/4" steel

Cover Diamond-pattern tread plate reinforced for 150 psf (732 kg/m²) live load

Frame Steel angle frame with strap anchors welded around the perimeter

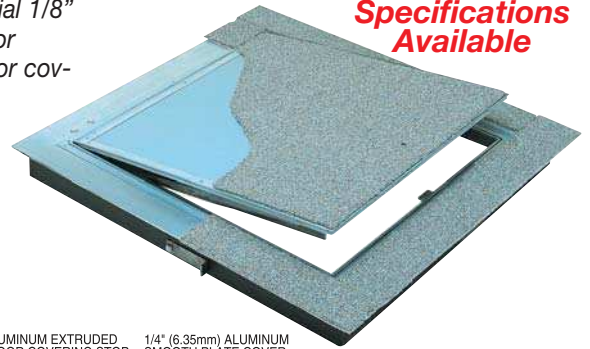
Hinges Cast steel cam-action hinges that are concealed from the exterior of the door

Latch Type 316 stainless steel slam lock with fixed interior handle and removable exterior turn/lift handle

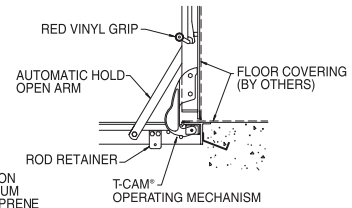
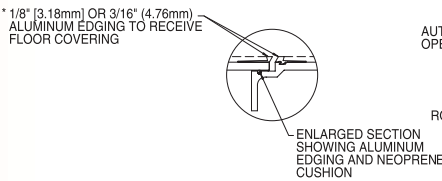
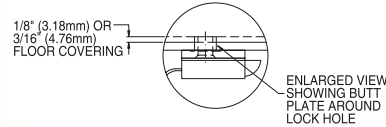
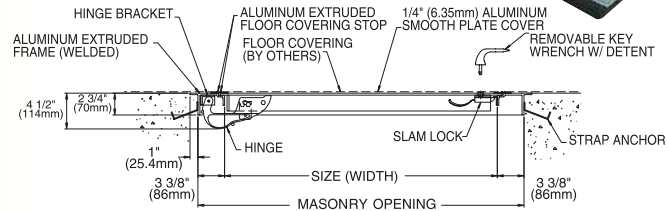
Lift Assistance Torsion bars that pivot on cam-action hinges. Automatic hold-open arm with grip handle release

Finish Mill finish aluminum with a bituminous coating applied to the exterior of the frame

Hardware Zinc plated/chromate sealed



SECTION DETAIL:



Item #	Size in Inches W x H	Shipping Wt. Lbs.
T-1 Aluminum	24 x 24	53
T-2 Aluminum	30 x 30	68
T-3 Aluminum	36 x 30	81
T-4 Aluminum	36 x 36	91

TD available upon request (double leaf)

WB Type TER & TRD Floor Hatch

www.wbdoors.com

Aluminum non-drainage door accepts architectural flooring material. Similar to Type T in function, these single and double leaf doors are designed with a pan cover to accept a variety of flooring materials up to 1" in thickness. Each door is spring balanced to ensure smooth, easy operation upon installation of the specified flooring material in the field. Note: Available with drain coupling for drainage applications. By Bilco.

Specifications Available

Construction Features:

Material Cover and frame are 1/4" aluminum

Cover Smooth plate reinforced for 150 psf (732 kg/m²) live load. Cover designed with 1" filmable pan for field installation of architectural flooring material (specify flooring material including type, thickness, and weight).

Frame Extruded aluminum frame with built in anchor flange around the perimeter

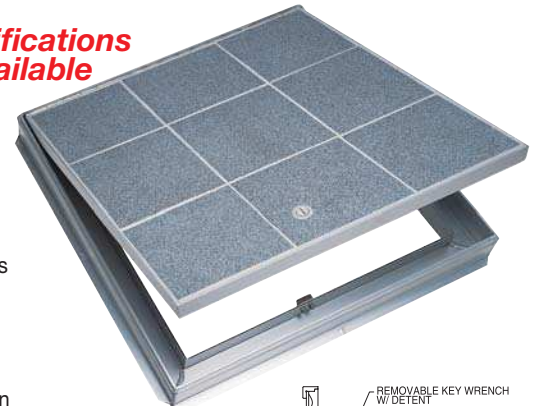
Hinges Continuous heavy-duty Type 316 stainless steel hinge

Latch Type 316 stainless steel slam lock with fixed interior handle and removable exterior turn/lift handle. Latch release is protected by a flush, gasketed, removable screw plug.

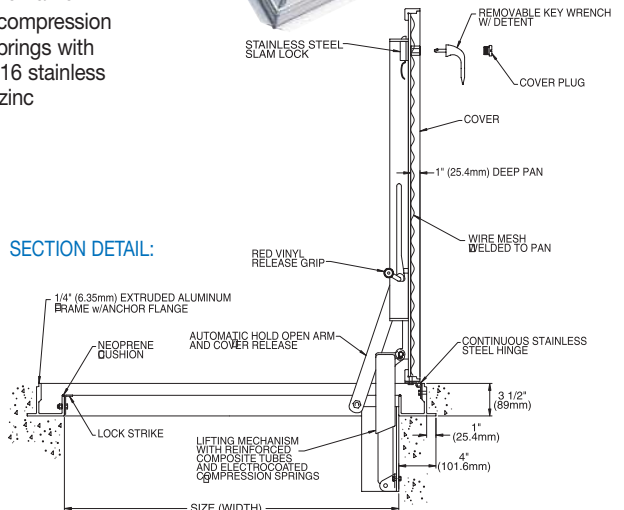
Lift Assistance Compression spring operators enclosed in telescopic tubes. Automatic hold-open arm with grip handle release

Finish Mill finish aluminum with a bituminous coating applied to the exterior of the frame

Hardware Engineered composite compression spring tubes. Steel compression springs with electrocoated acrylic finish. Type 316 stainless steel hinges. All other hardware is zinc plated/chromate sealed.



SECTION DETAIL:



Item #	Size W x H	Shipping Wt. Lbs.
TER-1 Aluminum	24 x 24	100
TER-2 Aluminum	30 x 30	110
TER-3 Aluminum	36 x 30	120
TER-4 Aluminum	36 x 36	130

TRD available upon request (double leaf)

WB Type Q Floor Hatch

www.wbdoors.com

Steel non-drainage single leaf covers are constructed of 1/4" diamond pattern plate and reinforced for a 150 lb/ft² (732 kg/m²) live load. Features zinc plated and chromate sealed hardware, concealed hinges, and the T-CAM® lifting system for ease of operation. By Bilco.

Construction Features:

Material Cover and frame are 1/4" steel

Cover Diamond-pattern tread plate reinforced for 150 psf (732 kg/m²) live load

Frame Steel angle frame with strap anchors welded around the perimeter

Hinges Cast steel cam-action hinges that are concealed from the exterior of the door

Latch Type 316 stainless steel slam lock with fixed interior handle and removable exterior turn/lift handle

Lift Assistance Torsion bars that pivot on cam-action hinges. Automatic hold-open arm with grip handle release

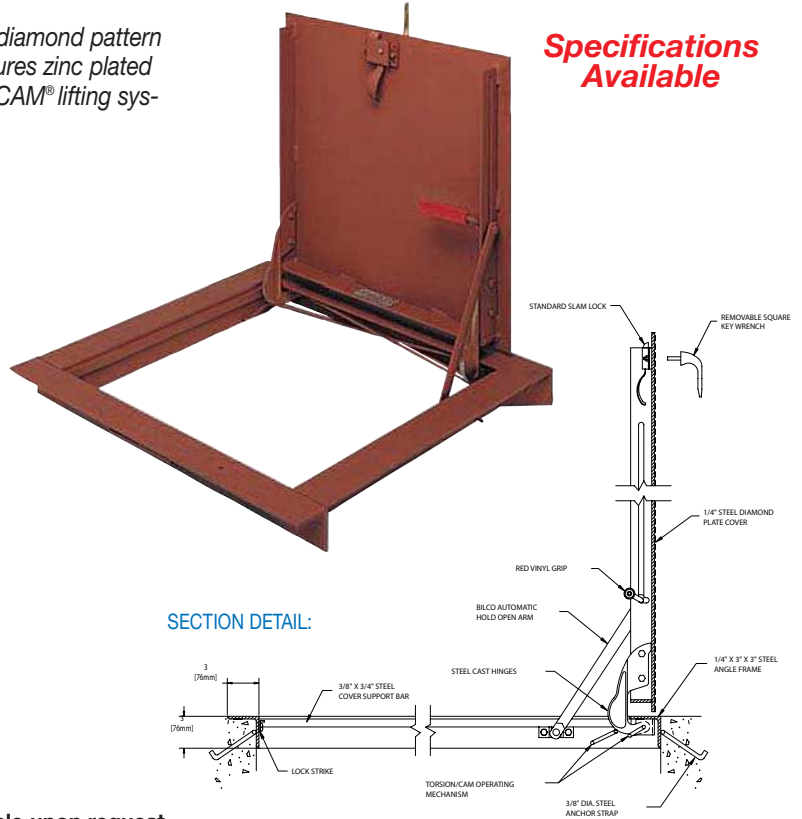
Finish Alkyd base red oxide primer

Hardware Zinc plated/chromate sealed

Item #	Size W x H	Shipping Wt. Lbs.
Q-1 Steel	24 x 24	122
Q-2 Steel	30 x 30	166
Q-3 Steel	36 x 30	190
Q-4 Steel	42 x 42	219

Q-D1 (steel double leaf) available upon request

Q-1AL (Aluminum) and Q-DAL (Aluminum double leaf) available upon request



WB Type K & KG Floor Hatch

www.wbdoors.com

Aluminum non-drainage door single or double leaf covers are constructed of 1/4" diamond pattern plate and reinforced for a 150 lb/ft² (732 kg/m²) live load. Features zinc plated and chromate sealed hardware, concealed hinges, and the T-CAM® lifting system for ease of operation. By Bilco.

Construction Features:

Material Cover and frame are 1/4" aluminum

Cover Diamond-pattern tread plate reinforced for 150 psf (732 kg/m²) live load

Frame Extruded aluminum angle frame with strap anchors bolted around the perimeter

Hinges Cast steel cam-action hinges that are concealed from the exterior of the door Latch Type 316 stainless steel slam lock with fixed interior handle and removable exterior turn/lift handle

Lift Assistance Torsion bars that pivot on cam-action hinges. Automatic hold-open arm with grip handle release

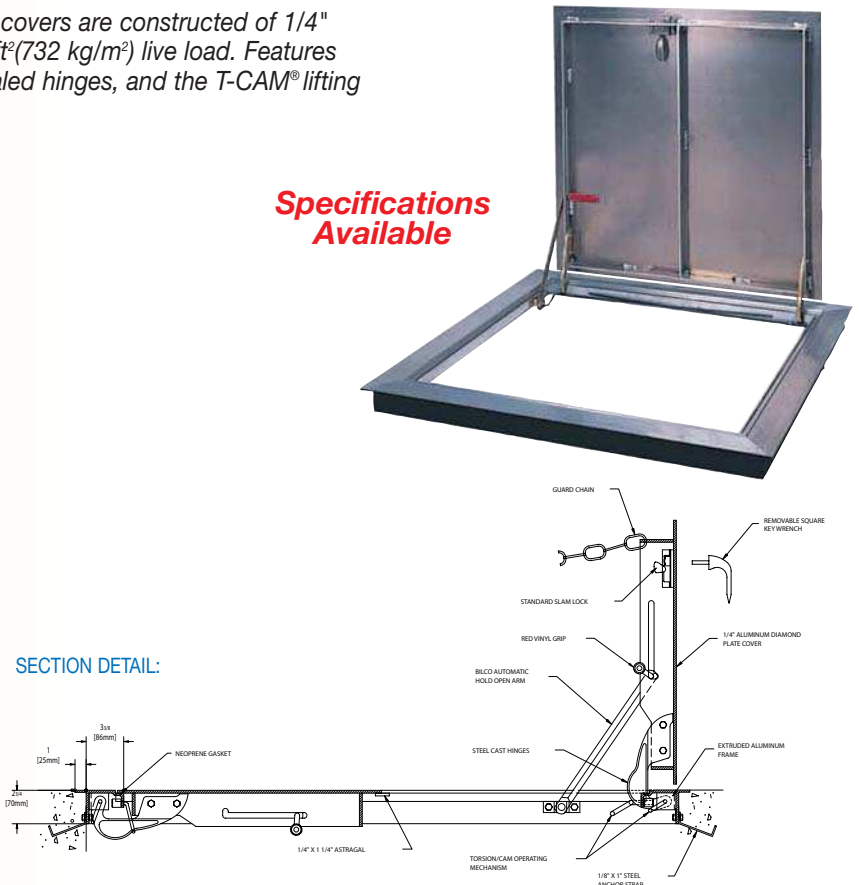
Finish Mill finish aluminum with a bituminous coating applied to the exterior of the frame

Hardware Zinc plated/chromate sealed

Item #	Size W x H	Shipping Wt. Lbs.
K-1 Aluminum	24 x 24	50
K-2 Aluminum	30 x 30	65
K-3 Aluminum	36 x 30	77
K-4 Aluminum	36 x 36	86
K-5 Aluminum	42 x 42	109

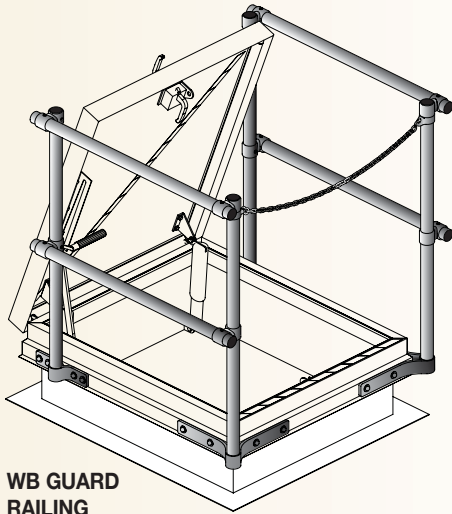
KG available upon request (double leaf)

Specifications Available



WB GUARD RAILING SYSTEM

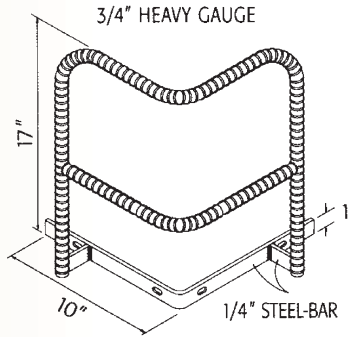
- Finish** Galvanized (hot dipped).
- Chain system** 3/16" proof coil ASTM specification, zinc plated with quick link and "S" hook
- Self closing gate** (optional to chain) Manufacturer's standard spring or gravity operated
- Pipe plug** Weather and light resistant for pipe ends
- Bolts** Hex head bolts 3/8", grade Z, zinc plated with manufacturer's standard washers inside and outside
- Railing fittings** Manufacturer's standard cast fittings, galvanized
- Sealant for brackets** Manufacturer's standard



WB GUARD RAILING SYSTEM:

WB SAFETY GRAB

- WB Safety Grab:** 3/4" heavy gauge steel that attaches to the roof hatch
- For added and improved safety whether entering or leaving the roof
- Overall height 17", horizontal width 10" to corner
- Textured for increased grip
- Easily mounted on either corner of exterior hatch opening
- Polyester dry powder coated to match roof access hatch



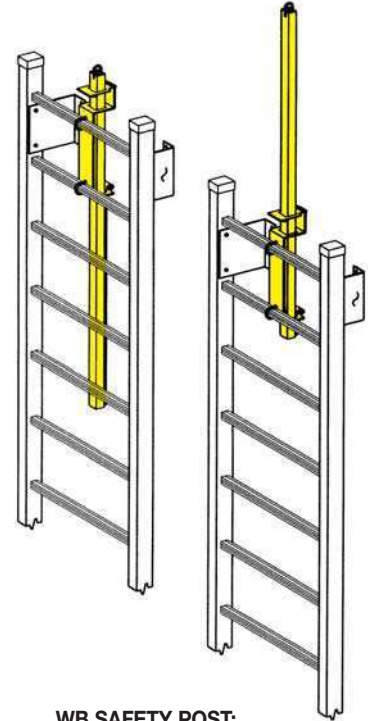
WB SAFETY GRAB:

Item #	Shipping Wt. Lbs.
WB Safety Post *	24
WB Safety Grab *	-
WB RHSR-SS-3630 *	87

*Stock item

WB SAFETY POST

- Provide easier, safer ladder access through roof hatches, floor, vault, and sidewalk doors, and manholes.
- Telescoping post permanently mounts to the top two rungs of any fixed ladder providing a positive hand-hold enabling the user to enter or exit an opening in an upright and balanced position.

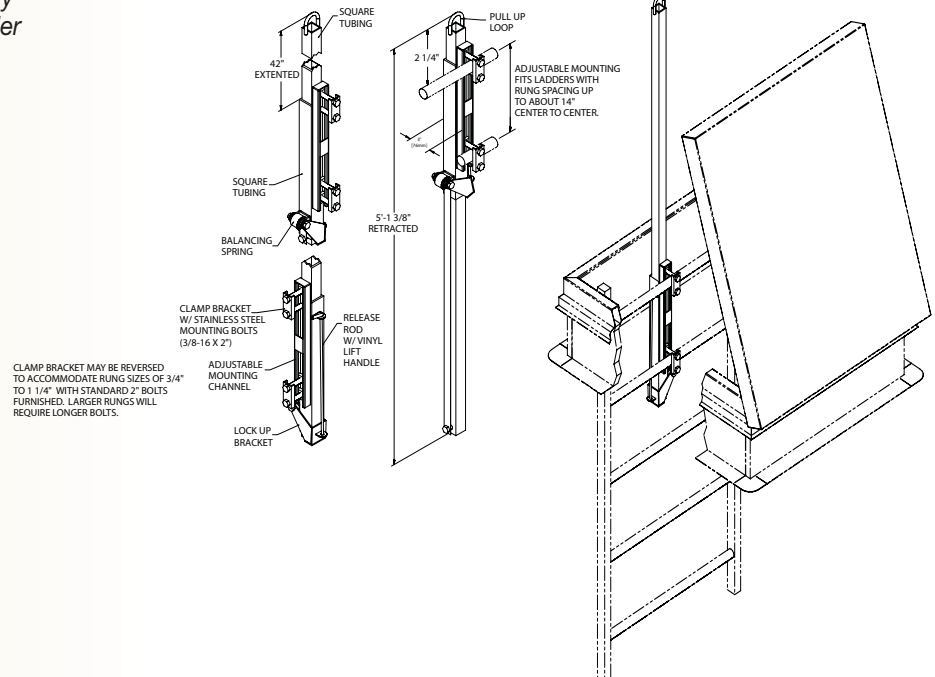


WB SAFETY POST:

Bilco LadderUP®

The Bilco LadderUP is furnished completely assembled, ready to mount on rear of ladder with clamp brackets on climbing side

- Bracket may be reversed to accommodate rung sizes of 3/4" to 1 1/4" with standard 2" furnished stainless steel mounting bolts. Larger rungs require longer bolts.
- Adjustable mounting fits ladders with rung spacing up to about 14" center to center
- Features pull up loop, release rod with vinyl lift handle, lock up bracket, balancing spring, square tubing, and adjustable mounting channel
- The Bilco BilGuard Hatch Rail System is available 36" x 30" and other sizes. Call for availability



Item #	Shipping Wt. Lbs.
WB LU-1 Steel, black *	24
WB LU-2 Steel, galvanized *	24

*Stock item

LU-3 and LU-4 available upon request

WB Classic Series Residential Basement Door

www.wbdoors.com

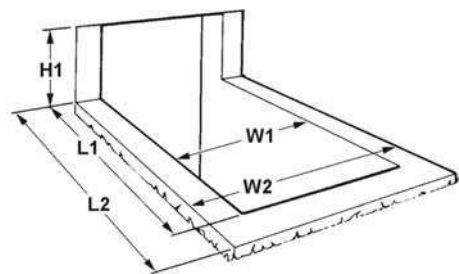
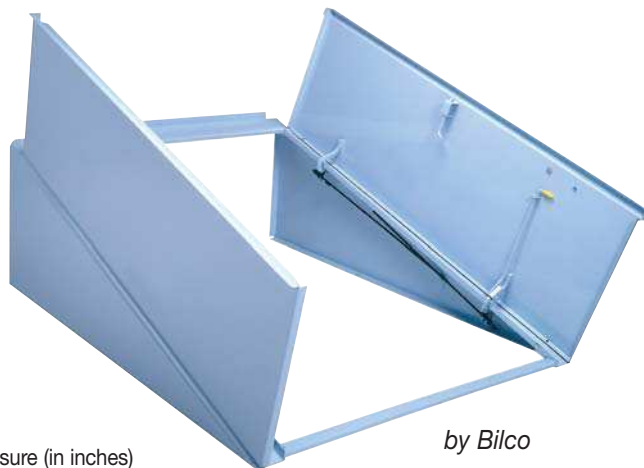
- Heavy-duty steel construction
- Flow-coated, baked-on factory prime finish
- Corrosion-resistant zinc-plated, chromate-sealed hardware
- Torsion Cam Lift system provides easy, one-hand operation
- Slide bolt locking mechanism (optional keyed lock available)
- Flanged construction and J-channel header shed water and prevent binding due to ice and snow, permitting all season use
- Extensions are available to increase the door length for sizes Ultra and Classic Series Door
 - Classic Series: 6", 12", 18" and 24" lengths
 - Ultra Series: 6" and 12" lengths only

Two or more extensions can be mounted back to back for longer extensions.



Construction Features:

1. Discard your old door and measure (in inches) the dimensions of the areaway foundation.
2. Measure dimension W1, the inside width, and dimension W2, the outside width of the areaway foundation walls. Record your dimensions and make the calculation shown.
3. Measure dimension L1, the inside length, and dimension L2, the outside length of the areaway foundation walls. Record your dimensions and make the calculation shown.
4. Measure dimension H1, the height from the top of the areaway foundation to the top of the opening in the house foundation.



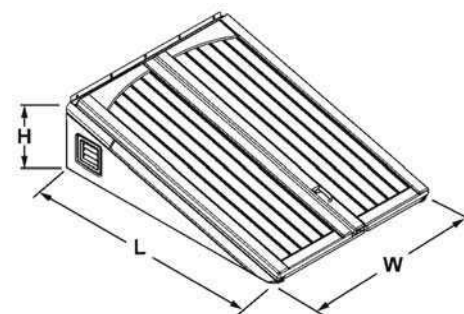
Item #	Size in Inches W x L x H
WB Classic-C	55 x 72 x 19-1/2

WB Ultra Series Residential Basement Door

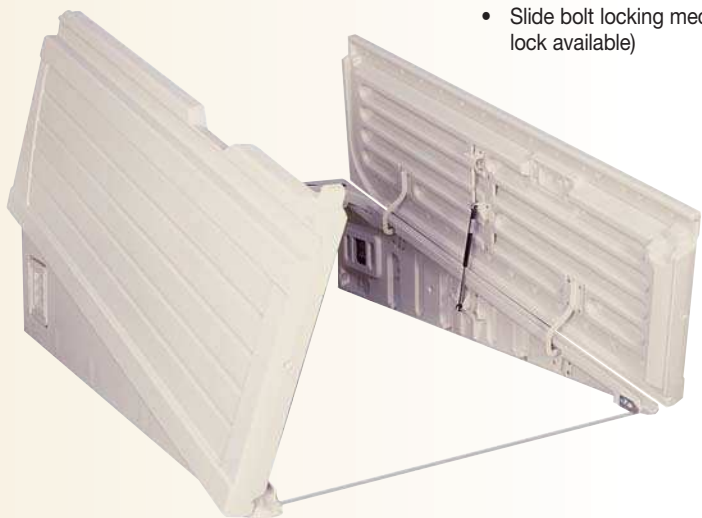
www.wbdoors.com

The beauty of a wooden door, without the work. Made from high-density polyethylene and engineered to exacting specifications, the Ultra Series door provides safe and code-compliant basement access, weather-tight performance and easy operation—all with virtually no maintenance. By Bilco

- Corrosion-resistant high-density polyethylene construction
- Simulated wood design
- Pleasing driftwood color
- Will not rust and never needs painting
- Interchangeable side panel inserts allow you to add light and/or ventilation to your basement areaway
- Gas spring lift assistance for easy, one-hand operation
- Slide bolt locking mechanism (optional keyed lock available)



Item #	Size in Inches W x L x H
WB Ultra-C	55 x 72 x 19-1/2



Introducing Our New Easy Access Aluminum Fixed Access Ladder

Sleek design eliminates bulky springs for easier access of large objects. Comparable clearance to traditional 25" wide models. By O'Keefe.

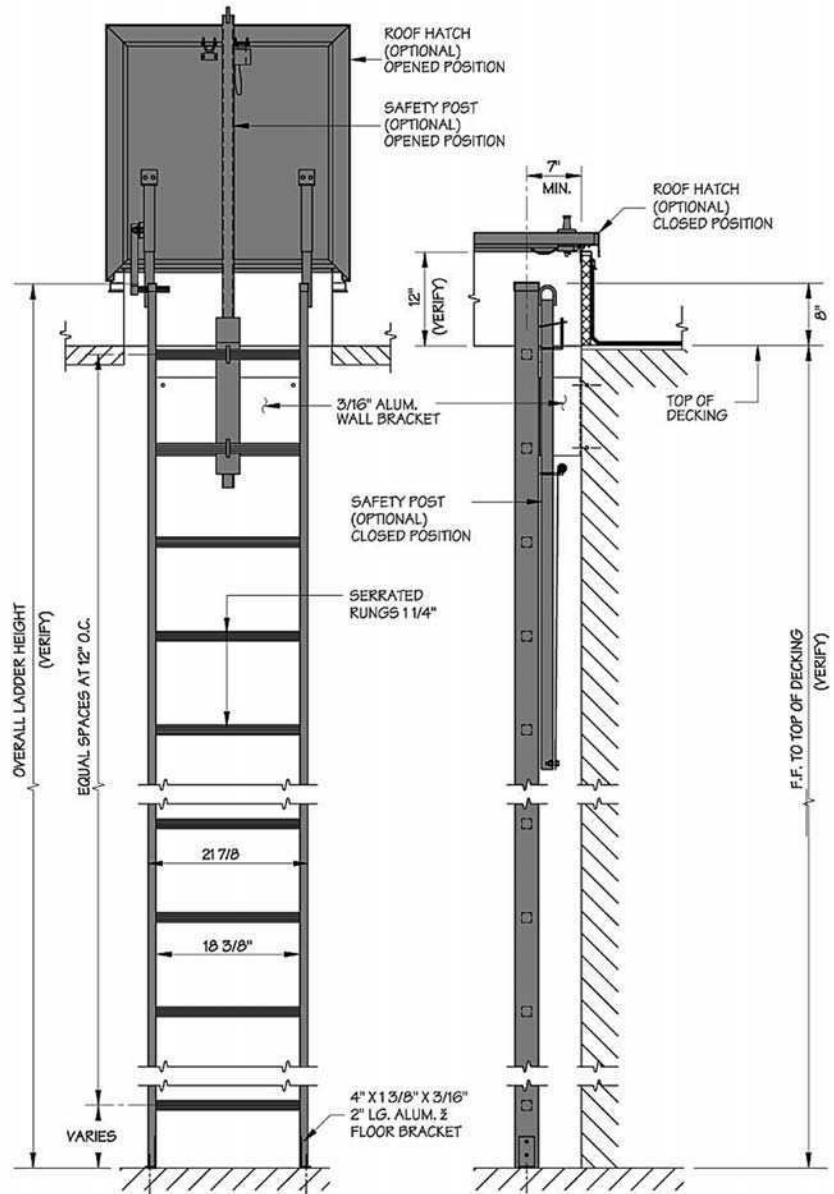
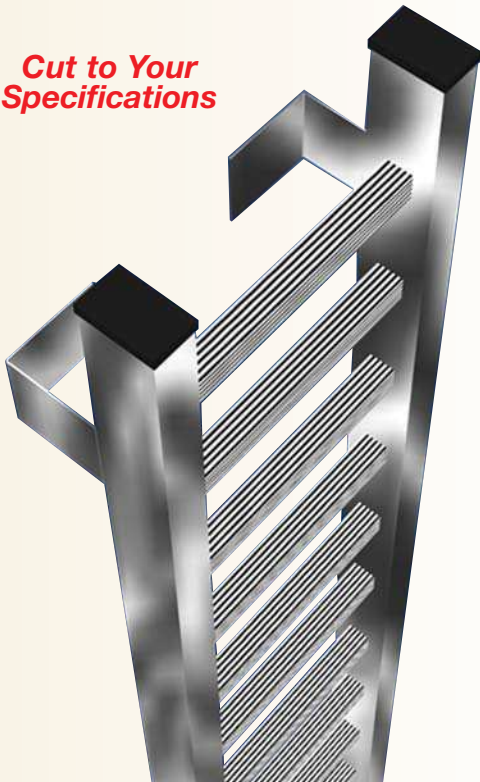
Product Features:

- Aluminum construction
- 1 1/4" deeply serrated square rungs
- Rung capable of withstanding 1,500 lb load
- Safety cages are recommended over 20'
- Landing platform recommended at 30' intervals
- Safety Post and Rail System are available for standard or heavy duty models
- Cut according to ceiling height
- Available for heavy duty application
- Ladder width is 18 3/8"
- Standards intermediate bracket is 7" from the wall to CL of ladder, 2 each will be included for every ladder, additional brackets are available if the distance exceeds 7" at additional charge
- Available in standard mill or anodized finish and can be powder coated in Fire Red, Alert Orange, Warning Blue, Caution Yellow, Safety Green, Standard Mill Finish, Anodized Finish, Black
- Security Door available with 501 only

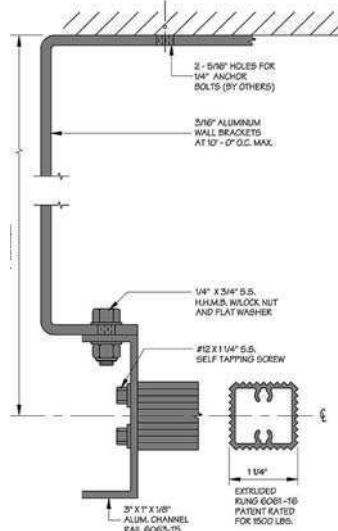
Model #	Floor to Ceiling Height Range	Approx. Ladder Width	Approx. Shipping Wt. Lbs.
WB-500	7'3" 8'4"	21 7/8"	77.0
WB-501	8'4" 10'3"	21 7/8"	86.0

- Sizes available in 8', 10', 12', 14' lengths only
- Specialty ladders available upon request

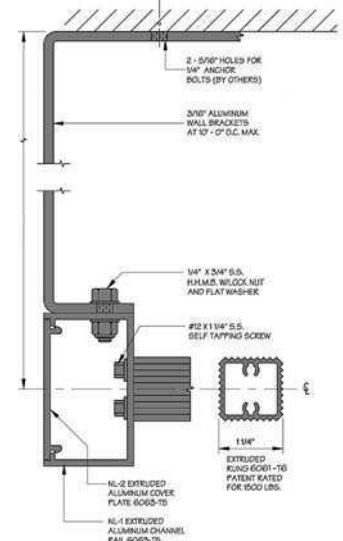
Cut to Your Specifications



SECTION DETAIL:
Model 500
Standard Duty Channel Rail



SECTION DETAIL:
Model 501
Heavy Duty Tubular Rail



WB Super Simplex Disappearing Stairway

www.wbdoors.com

Introducing Our New Disappearing Attic or Roof Access Ladder. By Precision Ladders, LLC

Construction Features:

- Customized construction for any job
- Cut to the exact finished ceiling height
- Meets requirements of A.N.S.I. A14.9-2004 for "Commercial" or "Residential" use
- Test weight of 500 Lbs
- Individual tread test weights of 1000 Lbs
- Actual shear of rivets tested to 1175 Lbs
- Steel frame
- Extruded aluminum treads and side rails
- 5 3/16" x 19 1/2" clear tread area
- Ceiling heights up to 13' 6"

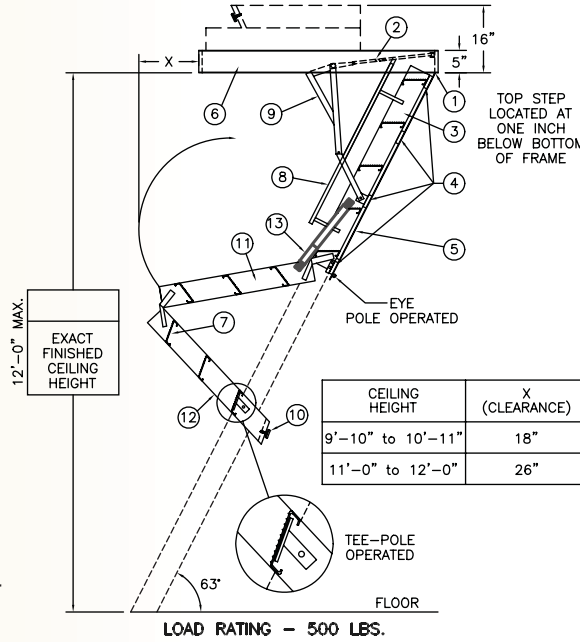
Options:

- Available Non-Rated and Rated with 2 hour fire-rating for ceilings up to 13' 6"
- Lock on door panel (std on fire-rated unit)
- Special deep frame to accommodate dropped ceiling finishes (on non-rated units only)
- 2 hour fire-rated Warnock Hersey label that meets ASTM-E-119 and UBC 43-7 requirements, passed 250° temperature rise in the first 30 minutes
- Fold-Assist (STD on units 9'-10" and taller)
- More disappearing ladder styles, Rated or Non-Rated, are available upon request. Call for a quote.

LOAD CAPACITY:

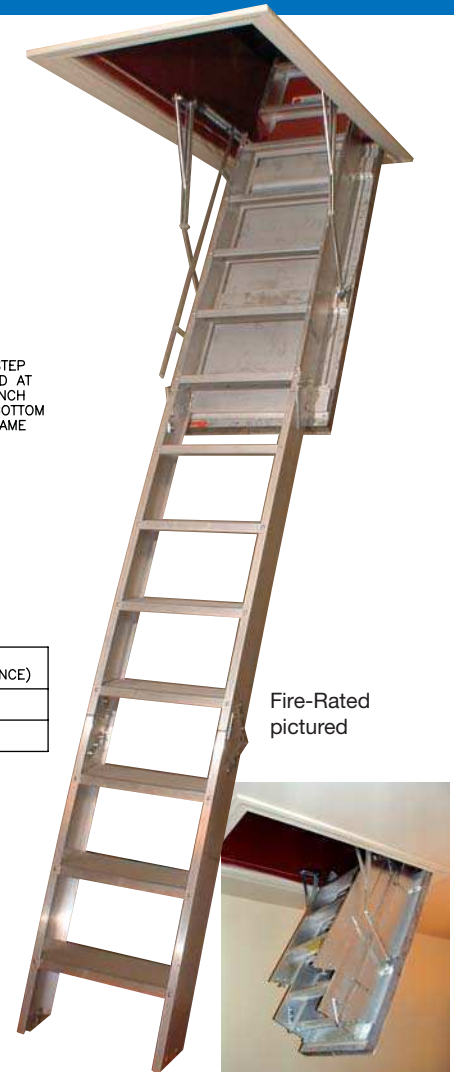
500lbs.

Combined Weight of User and Materials



LADDER LEGEND

- | | |
|---------------------------|------------------------------|
| 1. STEEL PIANO DOOR HINGE | 7. TREAD (SERRATED ALUM.) |
| 2. DOUBLE SPRING ACTION | 8. HANDRAIL BOTH SIDES |
| 3. SIDE RUNNER 5" ALUM. | 9. EXTRA HEAVY OPERATING ARM |
| 4. BATTEN 1/8" ALUM. | 10. ADJUSTABLE FOOT |
| 5. DOOR PANEL 1/8" ALUM. | 11. MIDDLE SECTION |
| 6. STEEL BOX FRAME | 12. BOTTOM SECTION |
| | 13. FOLD-ASSIST |



WB Corporate Headquarters

www.wbdoors.com



Corporate Office



Corporate Office

1330 Progress Drive, Front Royal, VA 22630

Western Distribution Center

4058 S. McCarran Blvd., Bldg. A, Reno, NV 89502

Our customers know they can expect the best quality and service.

Competitive pricing and personal service are the secret to our international success. Our customers trust us to create solutions for their individual needs, because we believe personal service is vital to their satisfaction.



Western Distribution Center

As The Williams Brothers Corporation of America continues to expand our product lines that we believe will benefit our distributors and their customers, we have made several additions that we are truly excited about. We are pleased to present our **Roof and Floor Access Division** in this catalog. In addition to our full line of premium metal access panels in numerous sizes and styles, we are introducing this catalog specifically for roof hatches, floor hatches, guard railing systems and ladders for a number of ceiling applications.

We have taken a lot of time to review these products to ensure they meet the highest quality standards The Williams Brothers Corporation of America is known for in the industry. It is with confidence that we present these products to you in consideration of your customer's potential needs.

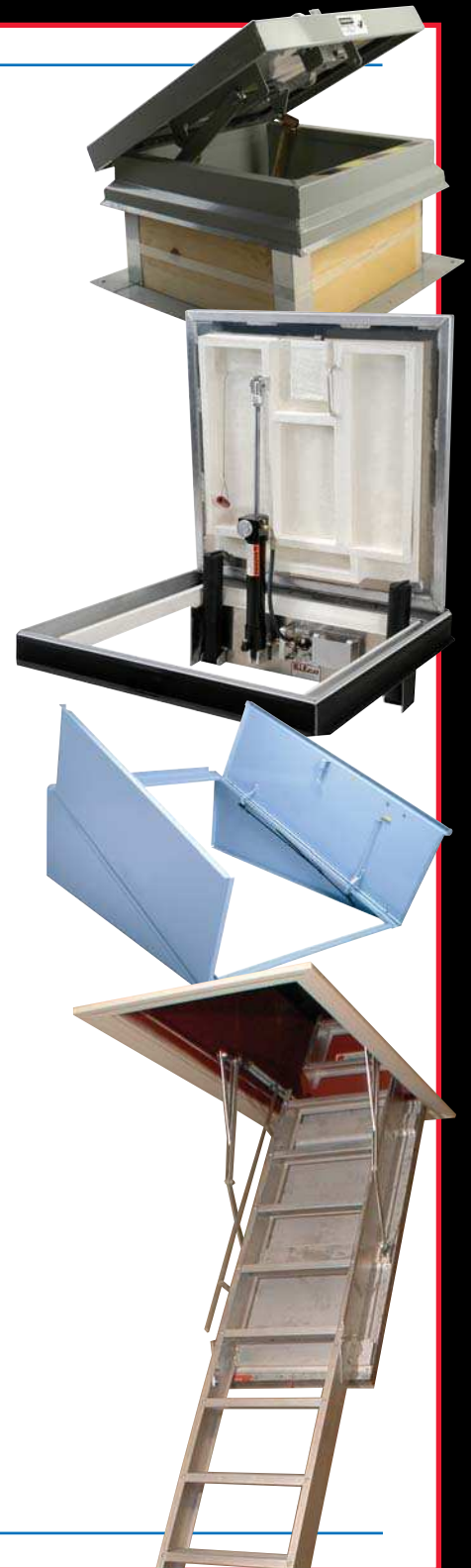
As always, here at Williams Brothers, we strive to remain competitive on pricing while maintaining the highest and most consistent quality. As we build on the solid foundation we have established for our products and our business principles, we have enjoyed putting these products together to service your customers needs.



George K.E. Williams
President



Angie Williams
Vice-President



See our full product line and download submittals and CAD drawings at www.wbdoors.com

DISTRIBUTED INTERNATIONALLY BY:



Corporate Office
1330 Progress Drive, Front Royal, VA 22630

Western Distribution Center
4058 S. McCarran Blvd., Bldg.A, Reno, NV 89502

Phone: 1-800-255-5515 • Fax: 1-800-822-5001
Website: www.wbdoors.com

For country of manufacture of all Williams Brothers products please call us or visit our website at www.wbdoors.com