

# ICF & SIP

## BUILDING SOLUTIONS

Insulating Concrete Forms (ICFs) and Structural Insulated Panels (SIPs) represent innovative and dependable choices for responding to a wide variety of building challenges. Wind-lock® ICF and SIP help ensure that these technologies will be an efficient and cost-effective solution as well, with high-quality specialized tools for cutting, fabricating, gluing and finishing.

58  
60  
64  
67  
68  
70  
71  
75  
76

FOAM AND FOAM GUNS



**FOAM2FOAM®**  
PAGE 58

HOT KNIVES



**BUCK PLATES**  
PAGE 67

ICF STRUCTURAL SOLUTIONS

ICF BUCK FASTENERS

SIP

ICF MOISTURE CONTROL

INSTALLATION ESSENTIALS

ICF FORM FABRICATING

TAPCO BRACING SOLUTIONS



**ICF SUPER  
GROOVER™**  
PAGE 69



**INSUL-KNIFE**  
PAGE 75



# GIVING YOU THE BEST PRODUCTS AND SERVICE

Our commitment is more than delivering the finest tools, accessories and specialized products. We've made the same commitment to giving you the best customer service available. That means technical expertise and consulting to help projects go more smoothly and quickly. Our project know-how includes productivity tips, work procedure advice, application technique refinement and other contributions toward fast installation and quality results. Just ask us.





1



3A



3B

**NEW!**



4

**FOAM2FOAM® GUN FOAMS**

**EXCLUSIVE PRODUCT**

*ICF Contractors' Preferred Foam Adhesive.*



A multi-purpose, professional, low-expansion construction adhesive and gap and crack filler. Great for ICF, SIP and EIFS and stone veneer applications. One component polyurethane foam. Cures by absorbing water vapor from the air.

- Used for filling, sealing, and insulating joints and cracks
- Professional quality
- Accurately controlled application
- Moisture-curing
- Acoustical sealant
- Drywall adhesive: reduces fasteners by 60%
- Excellent adhesion to most surfaces
- Temperature, water and chemical resistant
- No CFC/HCFC
- Stone veneer adhesive
- Compatible with EPS foam boards
- Paintable and can be plastered over

*Consult your system manufacturer for specific recommendations.*

**1. W-F2F® Foam and Cleaner**

Part Code	Description	Contr Price	Approx Wt
W-F2F24	Wind-lock Foam2Foam Case	CALL	22 lb
NS W-PGCS	F2F Gun Cleaner 12 oz Case	CALL	13 lb

NS=Not shown.

**2. F2F® Sampler Kit**

**KIT INCLUDES:** 1 Can F2F®, 1 Can F2F® Cleaner, 1 W-EG13T Foam Gun, 1 Pair Protective Rubber Coated Gloves.

Part Code	Description	Contr Price	Approx Wt
NS W-F2FKIT	Wind-lock F2F Kit	CALL	6 lb

NS=Not shown.

**3. Contractors' Choice Value Kit **NEW!****

**KIT INCLUDES:** Cans of F2F®, 1 Can of F2F® Cleaner, 1 W-EG13T Foam Gun, 1 Pair Protective Rubber Coated Gloves.

Part Code	Description	Contr Price	Approx Wt
A W-CC9	Kit incl. 9 Cans of F2F	CALL	20 lb
B W-CCV11	Kit incl. 11 Cans of F2F	CALL	22 lb

**4. 11/1 Foam Convenience Kit**

**KIT INCLUDES:** 1 Can of F2F® Cleaner, 11 Cans of F2F®.

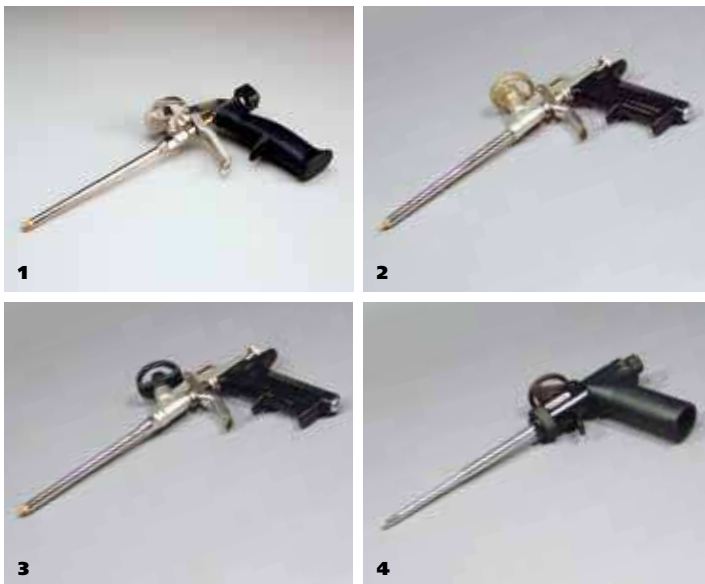
Part Code	Description	Contr Price	Approx Wt
W-CLF2F	11/1 Foam Convenience Kit	CALL	23 lb



**Stock to Dock Shipping Guarantee**

Products highlighted in yellow are guaranteed to ship within 24 hours or freight costs are **FREE!** Larger orders may require additional lead times. Call for details.

**Buy the Kit and Save!**



## FOAM GUNS

All of our guns are engineered to deliver foam day after day with minimal cleaning. The all-metal needle valve construction delivers the polyurethane foam with controlled accuracy. We offer a wide variety, ranging from “do it yourself” models to professional.

### ECONOMY SERIES

#### 1. W-EG13T Taper Tip Foam Dispenser

Light-medium duty gun, featuring all-metal needle valve construction and brass tapered tip with universal can adapter and tip. This is our best gun for filling in EPS board gaps.

Part Code	Description	Contr Price	Approx Wt
W-EG13T	Taper Tip Foam Dispenser	\$35.95	2 lb

#### 2. W-EG13

Light-medium duty gun, featuring all-metal needle valve construction and brass universal can adapter and tip.

Part Code	Description	Contr Price	Approx Wt
W-EG13	Economy Foam Dispenser	\$39.95	2 lb

### INTERMEDIATE SERIES

#### 3. W-EG14

Medium duty gun featuring a Teflon® coated needle valve and universal can adapter. The knurled brass dispensing tip is the knurled brass that holds the extension tubes in place. Also available with a 31" long extended barrel for long reach or sub floor applications.

Part Code	Description	Contr Price	Approx Wt
W-EG14	Foam Dispenser with Teflon Tip	\$56.50	2 lb
NS W-EG14L	31" Long Barrel	\$139.75	4 lb
NS W-EG14BT	Brass tips for W-EG14	\$3.75	1 lb

NS=Not shown.

### PROFESSIONAL SERIES

#### 4. W-EG15

This professional gun features a narrow tapered tip for dispensing the foam between EIFS board lines. The two-stage tapered barrel blends the foam to a superior consistency.

Part Code	Description	Contr Price	Approx Wt
W-EG15	Pageris Foam Dispenser	\$82.35	2 lb

## PROPER ATTACHMENT OF FOAM GUNS



1. Attach the gun to the can of F2F®.

4. Removing the can from a gun, point can upright and away from your face.



2. The can should point up and away from your face.

5. Clean the gun adapter with the F2F® Cleaner.



3. Shake can for 1 minute and purge air from gun.

6. Attach and spray the cleaner through the gun.

**Industry Exclusive:**  
**Now with a 3 year warranty.**



**HOT KNIFE SYSTEMS, BLADES AND ACCESSORIES**

**EXCLUSIVE PRODUCT**



**Stock to Dock Shipping Guarantee**

Products highlighted in yellow are guaranteed to ship within 24 hours or freight costs are **FREE!** Larger orders may require additional lead times. Call for details.

**1. 2-QC Knife**

Cuts foam clean with no bead dust. Handle stays cool.  
**KIT INCLUDES:** 2-QC Hot Knife and 4" straight blade.

Part Code	Description	Contr Price	Approx Wt
2-QC	Hot Knife Tool Kit	\$250.85	2 lb
NS 2-BQC	Hot Knife Tool Kit and Gatemouth Jr. Bag	\$280.05	5 lb

NS=Not shown.

**2. ICF Super Groover™**

Consistent utility service channels and grooves can be cut with one fast, clean pass. The cuts range from 1/2" to 6" wide, with virtually unlimited depth. The Super Groover™ comes standard 110 volt. **KIT INCLUDES:** The Super Groover™, 6" sled, 4" straight blade, 1/2" x 3" square blade, single and double electrical box cutter blades, 2 pieces of 12" flat blade material, and Gatemouth Jr. bag.

- Variable temperature control
- Blade in front for inside corners
- Detachable sled allows straight blade use

Part Code	Description	Contr Price	Approx Wt
I-ICFSG	Super Groover	\$499.95	10 lb
NS I-ICFSGKIT	Super Groover Kit	\$540.95	12 lb

NS=Not shown.

**3. ICF Kit**

Great starter kit.

**KIT INCLUDES:** 2-QC Hot Knife, 6" sled, 1/2" x 3" square blade, 4" and 6" straight blades, single and double electrical box cutter blades, 2 pieces of 12" flat blade material.

Part Code	Description	Contr Price	Approx Wt
NS 2-ICFKIT	Concrete Forms Kit	\$364.75	3 lb
2-BICFKIT	Concrete Forms Kit and Gatemouth Jr. Bag	\$393.55	5 lb

NS=Not shown.

**4. Ultimate ICF QC Hot Knife Kit NEW!**

Our most complete Hot Knife Kit.

**KIT INCLUDES:** 2 QC Hot Knife, 6" sled, 4" straight blade, hard wire benders, 4" and 6" stud cutter blades, single and double electrical box cutter blades, 1/2" x 3" square blade, radius wall blade, conduit cutter, 2 pieces of 12" flat blade material, 6" UGZ® hand rasp, 12 cans of F2F® foam gun and can of cleaner, Tajima G-Saw and canvas tool bag.

Part Code	Description	Contr Price	Approx Wt
I-UICFQCKIT	Ultimate ICF Wall Fabricator Kit with QC Hot Knife	\$650.95	34 lb

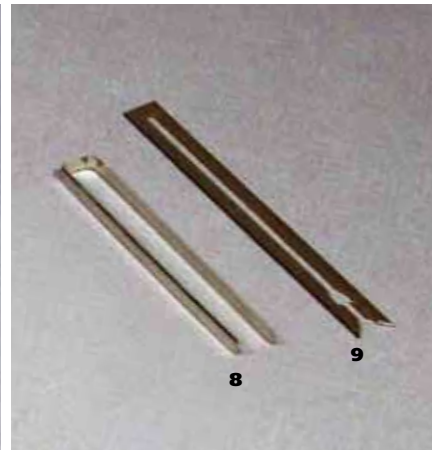
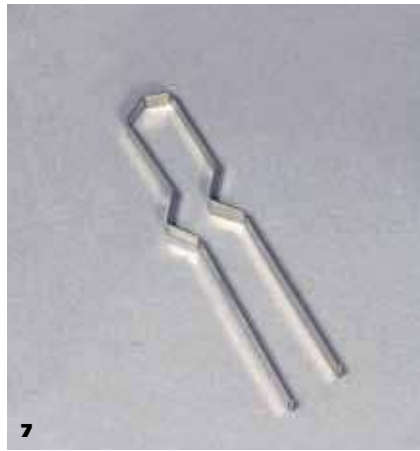
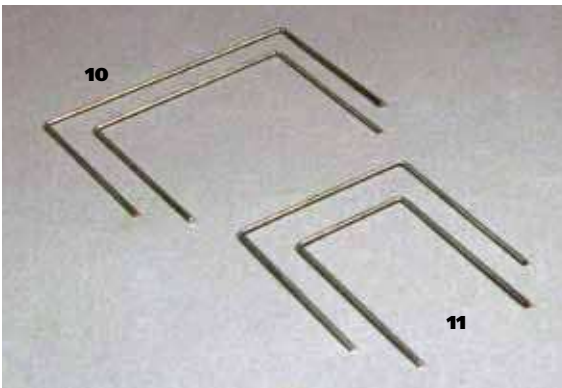
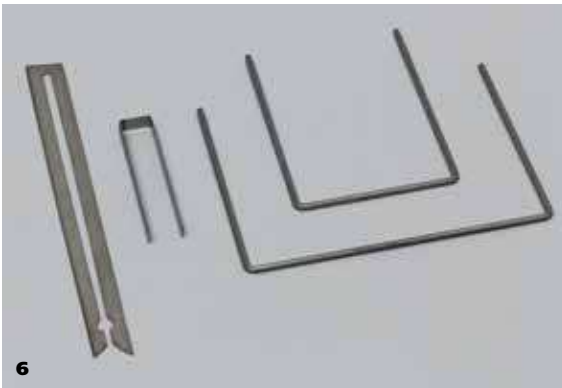
**5. Ultimate ICF Super Groover™ Kit NEW!**

The ultimate ICF wall fabricator kit. Create radius walls, embed 2" x 6" studs into garage door walls, run electrical wires after the drywall is up, or taper your blocks at the top of the wall for a secure roof connection...this kit has it all!

**KIT INCLUDES:** The Super Groover™, 6" sled, 4" straight blade, hard wire benders, 4" and 6" stud cutter blades, single and double electrical box cutter blades, 1/2" x 3" square blade, radius wall blade, conduit cutter, 2 pieces of 12" flat blade material, 6" UGZ® hand rasp, 12 cans of F2F® foam gun and can of cleaner, Tajima G-Saw and canvas tool bag.

Part Code	Description	Contr Price	Approx Wt
I-UICFSGKIT	The Ultimate ICF Wall Fabricator Kit with Super Groover	\$750.95	35 lb

**Buy the Kit and Save!**



**6. ICF Blade Kit**

These blades are packaged for the ICF Super Groover.™ If you buy the Super Groover™ and buy these blades, you'll never be caught short on a jobsite again.

**KIT INCLUDES:** 1 individual blade of each of the following: QS-50, Q-EBX2, Q-EBX4, Q-SB6.

Part Code	Description	Contr Price	Approx Wt
Q-ICFBK	ICF Replacement Blade Kit	\$29.95	1 lb

**KIT INCLUDES:** Brass plates and 2 thumbscrews.

Part Code	Description	Contr Price	Approx Wt
2-QCRK	Brass Blade Holder Replacement Parts	\$7.95	1/2 lb
Q-SLED6RK	Brass Sled Holder Replacement Parts	\$19.50	1/2 lb

**7. Tongue and Groove Blade**

For making radius wall cuts in ICF block.

Part Code	Description	Contr Price	Approx Wt
I-TGB	3 pack	\$45.00	1 lb

**8. Square Blade**

Best for cutting out channels for wiring.

Part Code	Size	Description	Contr Price	Approx Wt
QS-50	1/2" x 3"	3 pack	\$19.00	1 lb

**9. Straight Blades**

Part Code	Size	Description	Contr Price	Approx Wt
Q-SB2	2"	2 pack	\$20.00	1 lb
Q-SB4	4"	2 pack	\$24.00	1 lb
Q-SB6	6"	2 pack	\$28.00	1 lb

**10. Stud Cutter Blade**

Part Code	Size	Description	Contr Price	Approx Wt
Q-STUD4	3-1/2" x 3"	2 pack	\$15.00	1 lb
Q-STUD6	5-1/2" x 3"	2 pack	\$17.00	1 lb
Q-STUDK	Both Sizes	2 pack	\$16.00	1 lb

**11. Electric Box Cutter Blade**

Part Code	Size	Description	Contr Price	Approx Wt
Q-EBX2	2-1/2" x 3"	2 pack	\$13.45	1 lb
Q-EBX4	4-1/2" x 3"	2 pack	\$16.60	1 lb
Q-EBXK	Both Sizes	2 pack	\$15.00	1 lb

**12. ICF Taper Block Cutter**

Part Code	Description	Contr Price	Approx Wt
I-TBC	Taper Attachment	\$39.95	2 lb

**13. Q-CON Conduit Cutter**

This special blade is designed to core out the foam wall after the drywall is in place...allows you to drop electrical wires through a clean and smooth channel.

Part Code	Description	Contr Price	Approx Wt
Q-CON	After the Drywall Conduit Blade	\$19.50	1/4 lb





**Sled Not Included**



14



15



16



16



17, 18



19



20



21

#### 14. 6" Groove Sled

Adjustable blade holder accepts blades up to 6" wide.

Part Code	Description	Contr Price	Approx Wt
Q-SLED6	6" Groove Sled	\$96.95	1 lb

#### 15. Straight Edge Attachment

For use with Q-Sled.

Part Code	Description	Contr Price	Approx Wt
Q-SE	Straight Edge Attachment for Sled	\$13.00	1 lb

#### 16. Replacement Blade Holder Parts

Thumbscrews make blade changing easier.

**KIT INCLUDES:** Brass plates and 2 thumbscrews.

Part Code	Description	Contr Price	Approx Wt
2-QCRK	Brass Blade Holder Replacement Parts	\$7.95	1/2 lb
Q-SLED6RK	Brass Sled Holder Replacement Parts	\$19.50	1/2 lb

#### 17. Round Wire Material

Part Code	Description	Contr Price	Approx Wt
Q-RBM243	24" Round Wire Blade Material 3 pack	\$25.95	1 lb

#### 18. Flat Blade Material

Part Code	Description	Contr Price	Approx Wt
Q-SBM123	12" Flat Blade Material 3 pack	\$18.00	1 lb
Q-SBM128	12" Flat Blade Material 8 pack	\$48.00	1 lb
Q-SBMR12	12' Flat Blade Material Roll	\$66.00	1 lb
Q-SBMR24	24' Flat Blade Material Roll	\$119.95	1 lb

#### 19. Hard Wire Benders

Part Code	Description	Contr Price	Approx Wt
W-HWB	Hard Wire Benders	\$15.75	1 lb

#### 20. Hard Wire Cutter

Features an M2 blade insert hardened to 62Rc for cutting steel and stainless steel wire rope, mild steel rod and hardened round wire for the QC Hot Knife or Super Groover.™

Part Code	Description	Contr Price	Approx Wt
T-HWC63	Hard Wire Cutter	\$57.25	1 lb

#### 21. Step-Up and Down Transformer 120/220V

European converter.

Part Code	Description	Contr Price	Approx Wt
I-TS4033	Transformer Voltage Converter 120/220V	\$29.95	7 lb

**PROPER USE OF THE WIND-LOCK® QC HOT KNIFE—SEE WEBSITE**



**1.** How to use the Wind-lock® QC Hot Knife.



**4.** The versatile blade holders can accept a wide variety of blades and attachments. The QS-50 is shown. 1/2" x 3".



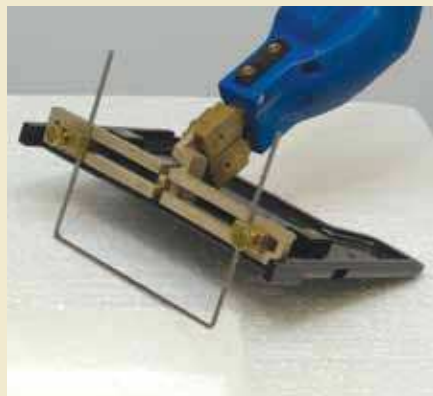
**2.** The spring loaded on/off trigger offers you instant power.



**5.** The blade holders can accept a wide variety of blades and attachments. The Q-SLED6 is shown.



**3.** The dial power control located on the top is for adjustable blade heat control.

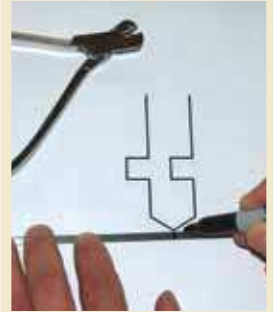


**6.** The Q-SLED6's adjustable blade depth is used for plunge or scooping cuts. The Q-EBX4 (Electrical Box cutter) is shown.

*Want more cutting power?  
Same techniques apply to the  
Wind-lock® Super Groover.™*

*Always disconnect power before changing blade.*

**BEND YOUR OWN BLADES**





ICF STRUCTURAL SOLUTIONS

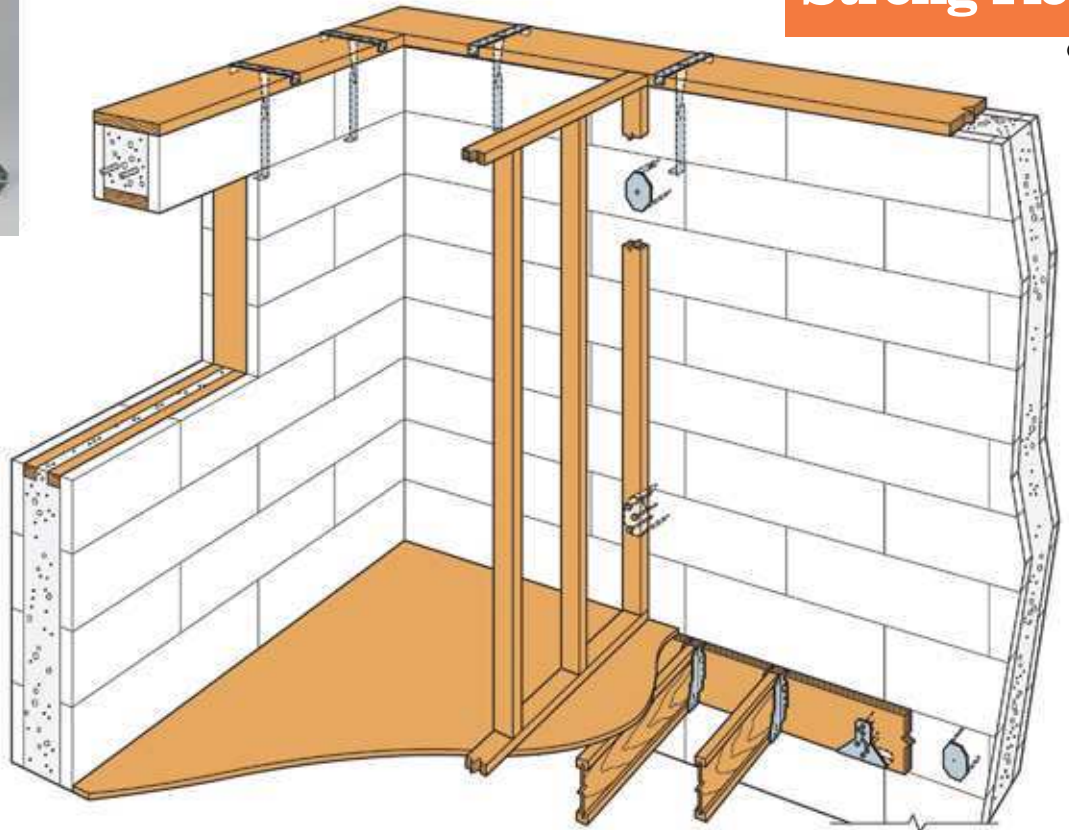
**SIMPSON**

**Strong-Tie**

®



- Attach interior partition walls with 1/4-14 #3 drill point screws (sold separately) into ICFVL where needed.
- Use ICFVL to attach ledger to ICF.
- Use ICFVL-W for solid sawn lumber or ICFVL-CW for LVL.



**1. Ledger Connectors**

Use for rim joist to joist connections. Contact Wind-lock® for current Simpson test data.

Part Code	Qty/Box	Description	Contr Price/Box	Approx Wt/Box
W-ICFVL	15	Steel Ledger	\$128.80	23 lb
W-ICFVLCW	15	Composite Wood	\$128.80	18 lb
W-ICFVLW	15	Wood Ledger	\$128.80	17 lb

**2. Heavy-Duty Tek Screws**

Part Code	Qty/Box	Size	Description	Contr Price/Box	Approx Wt/Box
UT-MD1147	1000	1/4"-14 x 3/4"	HWH Med-Duty #3 Drill	CALL	13 lb
UTMD1147-PK	100	1/4"-14 x 3/4"	HWH Med-Duty #3 Drill	CALL	2 lb
W-ICFD3	120	1/4"-28 x 3"	HWH Hvy-Duty #5 Drill	CALL	5 lb



The ICFVL Ledger Connector System is engineered to solve the challenges of mounting wood or steel ledgers to insulated concrete form (ICF) walls. Simpson's new ICF component of the system, the ICFVL, is designed to provide both vertical and lateral, in-plane performance. The system is still quick, versatile and easy to use but now provides so much more! There are many benefits over traditional anchor bolting, including better on center spacing in most cases, faster installation and no protrusions.

Simpson's ICFVL is made from galvanized, 14 gauge steel. The embedded legs are embossed for additional stiffness and the hole allows for concrete to flow through and around the connector. The exposed flange on the face of the ICF provides a structural surface for mounting either a wood or steel ledger.

**MATERIAL:** ICFVL—14 gauge; ICFVL-CW and ICFVL-W—16 gauge

**FINISH:** Galvanized

**INSTALLATION: ICFVL in ICF**

- Snap a chalk line for the bottom of the ledger.
- Mark required on center spacing.
- Use ICFVL to mark kerfs locations.
- Cut kerfs as marked.
- Insert ICFVL flush to the face of the ICF.
- Place concrete.

**Wood Ledger Attachment – ICFVL-W or -CW**

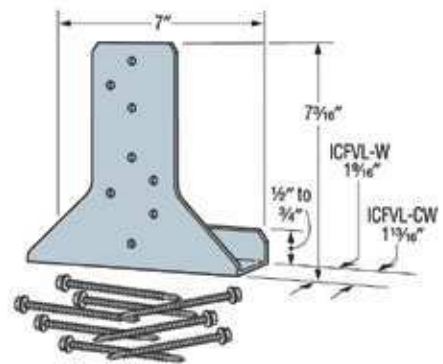
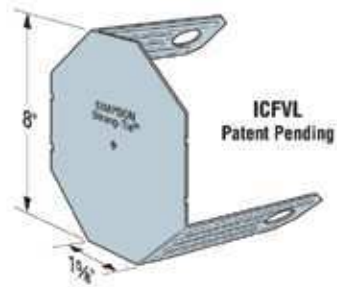
- Slip appropriate ledger connector underneath the ledger.
- Install the eight ICF-D3 screws partially into the ledger.
- Position the ledger level to the chalk line and drive the screws through the wood and into the ICFVL.

**Steel Ledger Attachment**

- Position the ledger level to the chalk line and against the ICFVL.
- Attach with four 1/4-14x3/4", #3 drill point screws (not provided).
- All screws should be located at least 1/2" from the edge of the ICFVL.
- Space screws evenly.

**CODES:** See page 12 for Code Listing Key Chart.

**WARNING:**  
Industry studies show that hardened fasteners can experience performance problems in wet environments. Accordingly, use this product in dry environments only.



ICFVL-W and ICFVL-CW

Ledger Type	Fasteners	Allowable Load (lbs)	
		Download (100/115/125)	Lateral F <sub>1</sub> (133/160)
Wood	8-ICF D3	1940	1905
Steel	4 - 1/4x3/4"	1660	1525

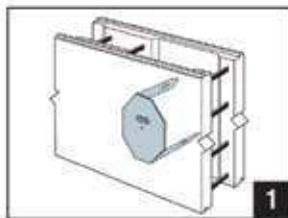
1. Fasteners for wood ledger (D3) are provided with the part and fasteners for steel ledger are not provided.
2. Loads apply to ICF foam thicknesses of 2 1/2" or less. Contact Simpson for allowable loads on thicker walls.
3. Alternately, #14 x 3/4" fastener may be used.
4. Tabulated loads may not be increased.

5. Concrete F<sub>c</sub> = 2500 psi minimum.
6. When combining download and lateral loads, Designer shall evaluate as follows:  
Design Download/Allowable Download + Design Lateral Load/Allowable Lateral Load.

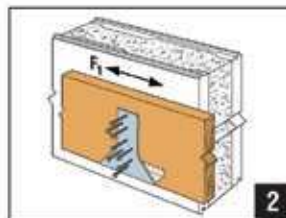
These tables address vertical load applications only.

Ledger Type	Connector Type	ICFVL SPACING TO REPLACE ANCHOR BOLTS (in.) <sup>1,2,3</sup>																Code Ref.
		1/2" Dia. Anchors at				3/8" Dia. Anchors at				(2)-3/8" Dia. Anchors at				1/4" Dia. Anchors at				
		12" O.C.	24" O.C.	36" O.C.	48" O.C.	12" O.C.	24" O.C.	36" O.C.	48" O.C.	12" O.C.	24" O.C.	36" O.C.	48" O.C.	12" O.C.	24" O.C.	36" O.C.	48" O.C.	
<b>WOOD LEDGERS</b>																		
DF/SP/SPF	ICFVL w/ ICFVL-W	48	48	48	48	43	48	48	48	21	42	48	48	39	48	48	48	160
LVL	ICFVL w/ ICFVL-CW	48	48	48	48	43	48	48	48	21	42	48	48	39	48	48	48	
<b>STEEL LEDGERS</b>																		
68 mils (0.068")	ICFVL	11	22	33	44	9	18	27	36	—	—	—	—	—	—	—	—	160
54 mils (0.054")	ICFVL	15	30	45	48	12	24	36	48	—	—	—	—	—	—	—	—	

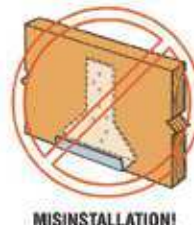
1. The Designer may specify different spacing based on the load requirements.
2. Spacings are based on perpendicular to grain capacity of bolt in wood ledger compared to tested value of ICFVL.
3. See F-ICFVL Rier for additional connection details.
4. For steel ledgers, the 68 mil ledger spacing is closer than the 54 mil ledger because the calculated load of a bolt is higher in a thicker piece of steel.
5. Steel ledger values are based on steel. F<sub>u</sub> = 60 ksi.



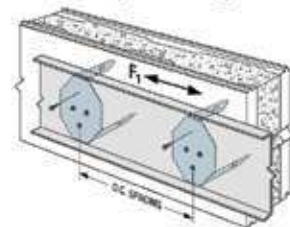
ICFVL



Typical Wood Ledger Installation with ICFVL and ICFVL-W



MISINSTALLATION!



Requires 4 screws at each location. Table provides on center spacing.

### 3. Simpson Titen HD

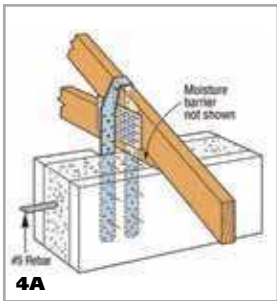
The Simpson Strong-Tie® Titen HD Screw Anchor can be used as a direct replacement for code prescribed cast-in-place sill anchor bolts. The Titen HD is a patented, high-strength screw anchor for concrete. The self-undercutting, non-expansion characteristics of the Titen HD makes it the ideal anchor for structural applications for ICF construction. The proprietary cutting teeth enable the Titen HD to be installed in one eighth of the time and after the ICF wall has been poured. The anchor can be installed with a standard ANSI tolerance drill bit. Recommended for permanent dry, interior non-corrosive environments.



Part Code	Qty/Box	Description	List/Box	Approx Wt/Box
THD-50600H	20	1/2" x 6", Drill 1/2"	CALL	10 lb
THD-62600H	10	5/8" x 6", Drill 5/8"	CALL	7 lb
THD-62612H	10	5/8" x 6-1/2", Drill 5/8"	CALL	8 lb

#### Titen HD Technical Data

Connection Method of 1/2" Anchor	Embed Depth	Min. End Distance	Capacity of Connection at 1-3/4" Edge Distance (lbs)								
			(133)				(160)				
			Tension	Shear//	Shear	O.C. Spacing	Tension	Shear//	Shear	O.C. Spacing	
<b>Code Prescribed Method</b>											
Anchor to Concrete	7"	5"	740	970	970	6'	740	970	970	6'	
Anchor to 2x Sill Plate 2	7"	5"	925	880	465	6'	925	1055	560	6'	
<b>Simpson 1/2" Titen HD Anchor</b>											
THD to Concrete 1, 3	4-1/2"	8"	1155	2600	725	6'	1155	2600	725	6'	



### 4. Simpson Truss Connectors

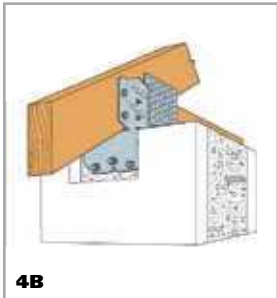
Ideal for ICF construction, these Simpson connectors are hurricane code-approved for securely attaching roof trusses and rafters at the critical transition of wall to roof. Call Wind-lock® for special orders.

#### H16S Seismic Tiedown Technical Data

Ga	Fasteners to Rafter or Truss	Fasteners to Concrete	Allowable Loads DF/SP (133/160)			Allowable Loads SPF (133/160)		
			Uplift	F1	F2	Uplift	F1	F2
18	2-10d x 1-1/2"	6-1/4" x 1-3/4" Titen	1470	—	—	1265	—	—

#### Ordering Information

Part Code	Qty/Box	Description	List/Box	Approx Wt/Box
A W-H16S	50	H Seismic Tiedown	CALL	24 lb

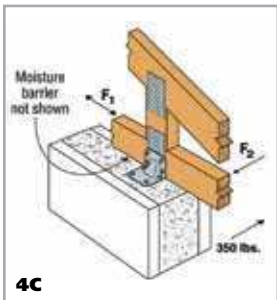


#### HM9 Seismic Tiedown Technical Data

Ga	Fasteners to Rafter or Truss	Fasteners to Concrete	Allowable Loads DF/SP (133/160)			Allowable Loads SPF (133/160)		
			Uplift	F1	F2	Uplift	F1	F2
18	4-SDS 1/4" x 1-1/2"	5-1/4" x 1-3/4" Titen	595	425	200	595	425	200

#### Ordering Information

Part Code	Qty/Box	Description	List/Box	Approx Wt/Box
B W-HM9KT	20	H Seismic Tiedown	CALL	12 lb



#### HGAM10 Hurricane Gusset Angle Technical Data

Ga	Fasteners to Rafter or Truss	Fasteners to Concrete	Allowable Loads DF/SP (133/160)			Allowable Loads SPF (133/160)		
			Uplift	F1	F2	Uplift	F1	F2
14	4-SDS 1/4" x 1-1/2"	4-1/4" x 1-3/4" Titen	850	1005	1105	850	870	815

#### Ordering Information

Part Code	Qty/Box	Description	List/Box	Approx Wt/Box
C W-HGAM10KT	10	Hurricane Gusset Angle	CALL	5 lb

**Wire Tie Not Included**



1



3

**tieKey**



2



3

**NEW!**

**ICF FASTENERS**

**1. Buck Plates**

The BUK-302 series is used in conjunction with Foam2Foam® to secure traditional wood bucks to ICF form openings. Available preassembled with wood/lite metal screws to save field application time.

**Engineered Features**

- 1-3/4" diameter
- Made of high-grade polypropylene plastic
- Unique design allows plate to flatten out in application
- Large ribs stiffen plate, limit deflection
- 16 keyholes allow for mechanical locking of base coat
- Available assembled or non-assembled

*Not recommended for use within standard PB EIFS.*

Part Code	Insulation Qty/Box	Screw Thickness	Contr Size	Approx Price	Wt
NS BUK-302	1000 Plates	NA	NA	CALL	6 lb
BUK-3WLM1	1000 Plates with Screws	3/4"	#7 x 1-5/8"	CALL	13 lb
BUK-3WLM2	1000 Plates with Screws	1"	#8 x 2"	CALL	15 lb
BUK-3WLM3	1000 Plates with Screws	1-1/2"	#8 x 2-1/2"	CALL	17 lb
BUK-3WLM4	1000 Plates with Screws	2"	#8 x 3"	CALL	19 lb
BUK-3WLM5	1000 Plates with Screws	3"	#8 x 4"	CALL	21 lb

NS=Not shown.

**2. Wind-Devil® 2 Fasteners**

The industry-leading, two-inch diameter Wind-Devil® 2 is by far the most popular and technologically advanced EPS mechanical fastening system on the market. The patented "bullseye" closure arms allow easy, efficient backing out of any screw, saving time and money.

Part Code	Insulation Qty/Box	Thickness	Approx Screw Size	Wt/Box
NS WD-2PLATE	1000 Plates	10 lb	NA	10 lb
NS WD2-PK	500 Plates	5 lb	NA	5 lb
WLMT-1	1000 Plates	1"	#7 x 1-5/8"	16 lb
WLMT-2	1000 Plates	1-1/2"	#8 x 2"	19 lb
WLMT-3	1000 Plates	2"	#8 x 2-1/2"	21 lb
WLMT-4	1000 Plates	2-1/2"	#8 x 3"	22 lb
WLMT-5	1000 Plates	3"	#8 x 4"	25 lb
WLMT-7	500 Plates	3-1/2"–4-1/2"	#10 x 5"	20 lb
WLMT-8	500 Plates	5"–5-1/2"	#10 x 6"	22 lb

NS=Not shown.

**3. tieKey® NEW!**

The tieKey® anchor is an easy to install, cast-in-place, adjustable masonry tie anchor that is embedded into the concrete wall which is formed by the insulating concrete form. This product is designed to provide the strength and security required when installing brick or stone veneer finishes. The tieKey® anchor is part one of a two-part system; the masonry anchor and any standard wire tie (not included). The masonry anchor is inserted through the ICF as the wall is formed, and reinforced as concrete is placed. The wire tie is installed as the masonry facing is applied. This system can accommodate construction tolerances and allow for differential movement for a variety of brick finishes and is available in a hot-dipped galvanized finish.

Part Code	Qty/Box	Contr Price/Box	Approx Wt/Box
W-BTK	200 pieces/box	\$300.00	32 lbs

*Save time and money!  
Order pre-assembled fasteners.*



**Stock to Dock Shipping Guarantee**

Products highlighted in yellow are guaranteed to ship within 24 hours or freight costs are **FREE!** Larger orders may require additional lead times. Call for details.



**SIP**

**1. SIP/ICF Through-Wall Screws**

Fast, one step installation for increased holding power. Fasteners engineered for Structural Insulated Panels (SIP) and ICF through-wall connections. FREE drive bit in every pack. Consult system manufacturer for specific requirements. Mix and match for column discount.

*Must order in box quantities.*

Part Code	Qty/Box	Description	Contr Price/Box	Approx Wt/Box
W-SIP004	250	4-1/2" SIP Fastener	\$62.50	10 lb
W-SIP005	250	5" SIP Fastener	\$87.50	12 lb
W-SIP006	250	6" SIP Fastener	\$110.00	14 lb
W-SIP007	250	7" SIP Fastener	\$135.00	16 lb
W-SIP008	250	8" SIP Fastener	\$157.50	18 lb
W-SIP009	250	9" SIP Fastener	\$175.00	20 lb
W-SIP010	250	10" SIP Fastener	\$185.00	22 lb
W-SIP011	250	11" SIP Fastener	\$202.50	24 lb
W-SIP012	250	12" SIP Fastener	\$217.50	26 lb
W-SIP013	250	13" SIP Fastener	\$232.50	28 lb
W-SIP014	250	14" SIP Fastener	\$280.00	30 lb
W-SIP015	250	15" SIP Fastener	\$312.50	32 lb
W-SIP016	250	16" SIP Fastener	\$375.00	34 lb

**SIP Screwdriver Bits**

Part Code	Description	Contr Price	Approx Wt
NS W-SIPBIT	SIP Fastener Star Drive Bit	\$4.25	1 lb
NS M-PBT303	#3 T30 Star Drive 6 pack	\$18.75	1 lb

NS=Not shown.

**2. FROTH-PAK® 160 Slow Rise Foam**

Excellent for blind filling panel connection.

**KIT INCLUDES:** 1 ISO (A) cylinder; 1 Polyol (B) cylinder, 9 ft. gun hose assembly, 6 cone white spray nozzles, 4 GG white spray nozzles, 1 petroleum jelly packet and instruction sheet.

Part Code	Description	Contr Price	Approx Wt
W-FP160SR	Slow Rise Foam Kit	CALL	39 lb

**3. Froth-Pak® 180**

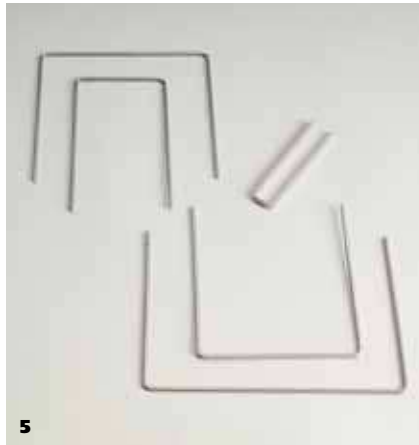
200 Board Feet/16.6 Cubic Feet

**KIT INCLUDES:** Iso (A) cylinder, Polyol (B) cylinder, 6 cone spray nozzles, 4 GG spray nozzles, 9-ft gun hose assembly, petroleum jelly packet.

Part Code	Description	Contr Price	Approx Wt
W-FRPK180	Sealant Kit	CALL	39 lb
NS W-FP200CA	Insulation Kit, Class A	CALL	39 lb

NS=Not shown.





## SIP ADHESIVE & FOAM CUTTING

### 1. W-F2F® Foam and Cleaner\*

Part Code	Description	Contr Price	Approx Wt
W-F2F24	Wind-lock Foam2Foam Case	CALL	22 lb
NS W-PGCS	F2F Gun Cleaner 12 oz Case	CALL	13 lb

\*For more information on F2F, please see pg. 58, 59.

NS=Not shown.

### 2. Great Stuff™ Pro Gaps & Cracks

For filling and air-sealing small holes, gaps and cracks, also acts as a fireblocking material to help prevent the spread of fire and smoke.

Part Code	Description	Contr Price	Approx Wt
NS W-GSGC20	Gun Dispenser Case of 12, 20 oz cans	CALL	25 lb
W-GSGC26	Gun Dispenser Case of 12, 26 oz cans	CALL	28 lb
NS W-GSGCRS20	Reusable Straw Dispenser Case of 12, 20 oz cans	CALL	25 lb
NS W-GSGCRS26	Reusable Straw Dispenser Case of 12, 26 oz cans	CALL	28 lb

NS=Not shown.

### 3. ICF Super Groover™

Consistent utility service channels and grooves can be cut with one fast, clean pass. The cuts range from 1/2" to 6" wide, with virtually unlimited depth. The Super Groover™ comes standard 110 volt. **KIT INCLUDES:** The Super Groover,™ 6" sled, 4" straight blade, 1/2" x 3" square blade, single and double electrical box cutter blades, 2 pieces of 12" flat blade material, and Gatemouth Jr. bag.

- Variable temperature control
- Blade in front for inside corners
- Detachable sled allows straight blade use

Part Code	Description	Contr Price	Approx Wt
I-ICFSG	Super Groover	\$499.95	10 lb
NS I-ICFSGKIT	Super Groover Kit	\$540.95	12 lb

NS=Not shown.

### 4. SIP Kit

Great for cutting out studs.

**KIT INCLUDES:** 2-QC Hot Knife, 6" sled, 1/2" x 3" square blade, 4" straight blade, 4" and 6" stud cutter blades.

Part Code	Description	Contr Price	Approx Wt
2-SIPKIT	Structural Insulated Panel Tool Kit	\$351.65	4 lb
NS 2-BISIPKIT	Structural Insulated Panel Tool Kit and Gatemouth Jr. Bag	\$381.65	5 lb

NS=Not shown.

### 5. SIP Blade Replacement Kit

**KIT INCLUDES:** QS-50, Q-STUDK, Q-EBXK.

Part Code	Description	Contr Price	Approx Wt
Q-SIPBK	Replacement Blades for SIP Kit	\$29.95	1 lb



## ICF MOISTURE CONTROL

### 1. Window/Door Membrane Flashing

A secondary weather barrier for use around windows, doors or any structural opening. Adheres to polystyrene when used with W-STP primer.

Part Code	Qty/Box	Size	Description	Contr Price/Pc	Approx Wt/Box
W-PWDT4	12	4" x 100' x 30 mil	Flashing Tape	\$32.50	99 lb
W-PWDT6	8	6" x 100' x 30 mil	Flashing Tape	\$50.65	96 lb
W-PWDT9	4	9" x 100' x 30 mil	Flashing Tape	\$77.95	80 lb
W-PWDT12	4	12" x 100' x 30 mil	Flashing Tape	\$100.95	98 lb

### 2. Plate Liner

The 1/4" economy plate liner is a peel-and-stick, closed-cell-foam liner that stops air and moisture infiltration. Use it at the floor, top of the wall and window bucks. Place on the buck system before the concrete is poured to prevent the concrete from coming in contact with the wood. This creates a joint that prevents air and moisture from leaking in at that critical construction joint.

Part Code	Qty/Box	Size	Description	Contr Price/Pc	Approx Wt/Box
W-PL35	7	3-1/2" x 25'	Plate Liner	\$23.25	15 lb
W-PL55	4	5-1/2" x 25'	Plate Liner 1/4" Foam	\$55.25	25 lb

### 3. Sill Sealer

The 3/8" thick premium grade, peel-and-stick, closed-cell-foam seals off voids and irregularities between the top of foundations and sill plates. Use it at the floor, top of the wall, and window bucks. Place on the buck system before the concrete is poured to prevent the concrete from coming in contact with the wood. This creates a joint that prevents air and moisture from leaking in at that critical construction joint.

Part Code	Qty/Box	Size	Description	Contr Price/Pc	Approx Wt/Box
W-PSS35	7	3-1/2" x 25' x 3/8"	Sill Sealer	\$31.95	12 lb
W-PSS55	4	5-1/2" x 25' x 3/8"	Sill Sealer	\$44.95	19 lb

### 4. Transition Wrap

The transition wrap is great for difficult to finish areas, such as parapets, or at the transition between grade and the first course of cladding. The protective membrane is a sticky back that adheres to polystyrene when used with the W-STP primer. The front has the appearance of a smooth, trowel-applied sand stucco finish and can be painted to match the existing siding.

Part Code	Qty/Box	Size	Description	Contr Price/Pc	Approx Wt/Box
W-PIW12	4	12" x 50'	Transition Wrap	\$239.35	64 lb

### 5. Water Based Primer

Recommended to be used with flashings, wraps and liners. To obtain manufacturer's recommended coverage per gallon, call 1-800-872-5625.

Part Code	Qty/Box	Size	Description	Contr Price	Approx Wt/Box
W-STP	4	1 gallon	Mfg Water Based Primer Trans Wrap	\$63.75	9 lb



## INSTALLATION ESSENTIALS

### 1. Rebar Bender and Cutter

Shear-cut up to #5, 5/8" grade 60 Rebar and bend to 180°.

Part Code	Description	Contr Price	Approx Wt
W-RCB	Rebar Cutter/Bender	\$349.95	39 lb

### 2. Universal Stirrup Bender

Designed for field fabrication of stirrups, for rebar lintels #3–3/8". The multi-function stirrup bender shapes 2-1/4" and 3/4" inside hook diameters.

Part Code	Description	Contr Price	Approx Wt
W-XTC	Commercial and Residential Stirrup Bender	\$375.00	12 lb

### 3. ICF Deck-Chairs

The solid stable base has two secure rebar placement cradles. One at 1/2" high and the other at 3/4" high for accurately setting the height of the rebar within the structural beam of the concrete deck.

Part Code	Qty/Box	Description	Contr Price	Approx Wt/Box
A I-CDC15	100	Universal Concrete Deck-Chairs	\$45.00	10 lb
B I-IDCU	200	Universal Rebar Holder #3–#8	\$190.00	10 lb

### 4. Boss® Biggies Industrial Wipes

These dual-sided industrial wipes clean paint, adhesives, oil and more from hands, tools and surfaces.

Part Code	Description	Size	Contr Price
W-BW	Dual-sided abrasive wipes 80 wipes per container	8" x 12"	\$25.95



**Cut Protection**



5



6



7

**NEW!**



8

**5. Ansell Cut Protection Glove**

Combining comfort plus the ultimate in cut protection and dexterity—all in one glove—this is the construction glove to be wearing when handling rough, sharp or jagged materials.

Part Code	Description	Size	Contr Price
W-KEVGMD	Blue Kevlar with Stainless Steel Cut Resistant Gloves	Medium	\$20.95
W-KEVGLG	Blue Kevlar with Stainless Steel Cut Resistant Gloves	Large	\$20.95

**6. Concrete Slump Kit**

**KIT INCLUDES:** Slump cone, concrete scoop and tamping rod.

Part Code	Description	Contr Price	Approx Wt
W-SCK	Concrete Slump Kit	\$70.95	5 lb

**7. ICF Wallibrator NEW!**

A must for proper concrete consolidation, this hand-held ICF wall vibrator attaches to any electric or cordless drill. Combining a high-speed, low-impact vibration, the Wallibrator insures good consolidation of concrete with one pass. Sizing in at just under 3 pounds and a length of 7 inches, this tool is lighter and more compact than most other traditional external vibrators. Drill not included.

Part Code	Contr Price	Approx Wt
W-IWVB	\$125.00	5 lb

**8. Multivibe**

The “Hummer Flex Hose System” is a portable, gas powered, internal vibrator for ICF construction. The Hummer has a durable 1" x 12" vibrating head, with a standard 8' long hose. It has a four stroke Honda engine for low maintenance and long-term reliability. Included with the Hummer is a comfortable shoulder strap for those large ICF jobs.

Part Code	Description	Contr Price	Approx Wt
I-HVHE	Portable Gas-Powered Concrete Vibrator	\$1,675.00	18 lb



9



10



11



12

**9. Zip Tie Installation Tool**

Part Code	Contr Price	Approx Wt
Q-L300C	\$49.00	1 lb

**10. Nylon Zip Ties**

Nylon Zip ties are used to reinforce Insulating Concrete Forms (ICF) at corners and T-wall intersections and to secure bracing to the forms. They come in a variety of lengths. Made of 100% nylon, they are alkyl and rust resistant (will not stain the forms).

Part Code	Size	Description	Contr Price	Approx Wt
Q-ZIP8	8" Long	120 lbs Tensile Strength, 100 pack	\$15.65	1lb
Q-ZIP24	24" Long	175 lbs Tensile Strength, 50 pack	\$19.65	1 lb
Q-ZIP36	36" Long	175 lbs Tensile Strength, 50 pack	\$22.35	2 lb

**11. Filament Tape**

Used for reinforcing form construction around windows, doors, end walls and corners.

Part Code	Qty/Box	Size	Contr Price/Pc	Approx Wt/Box
W-FT1	36	1" Wide Filament Tape	\$4.00/Roll	14 lb
W-FT2	24	2" Wide Filament Tape	\$7.35/Roll	28 lb

**12. Clear Tape**

Keep the tops of your forms clean during your next concrete pour with our 2" or extra wide 4" clear tape. Save labor and protect the important interlocks on the top of your insulated concrete form (ICF).

Part Code	Description	Contr Price	Approx Wt
W-CPT4	4" Wide Clear Protection Tape	\$4.95	1 lb



**13. PVC Electrical Boxes**

Commercial grade boxes let you pull wires through your future ICF walls. These code-approved electrical boxes are designed for receiving PVC conduit placed into ICF walls prior to the concrete pour. The boxes are strong, secure and can hold up to the rigors of concrete placement.

Part Code	Description	Contr Price	Approx Wt
NS I-ICESGL	Single Gang Electrical Box	CALL	1 lb
I-ICEDBL	Double Gang Electrical Box	CALL	1 lb
NS I-ICETPL	Triple Gang Electrical Box	CALL	1 lb

*For foam systems that are 2"-2 1/4" width, there is a spacer clip to fill the gap, available at no additional cost.*

NS=Not shown.

**14. Grappler™**

**Product Applications**

- Decorative Wall Hangings
- Bathroom Accessories
- Smoke Detectors
- Bulletin Boards
- Picture Frames
- Curtain Rods
- Doorbells
- Brackets

The answer to lightweight accessory attachment on ICF walls. Simply push into the foam block before the drywall is installed and hang objects by nailing 15 gauge finish nails, or screwing through the drywall into the Grappler™.

Part Code	Qty/Box	Description	Contr Price/Box	Approx Wt/Box
I-GRP48	90	Grappler 90 pack	CALL	19 lb

**15. Anchor Tunnel**

The 6" diameter Anchor Tunnel securely holds your 1/2" bolt in place, allowing the concrete to flow to the exterior face of block producing a solid attachment point between the rim joist and the concrete wall.

Part Code	Description	Contr Price	Approx Wt
I-AT	6" Diameter Polyethylene Anchor Tunnel	CALL	1 lb
I-AT50	6" Diameter Polyethylene Anchor Tunnel 50 pack	CALL	18 lb
I-ATW	Spanner Wrench for Installing the Anchor Tunnel	CALL	1 lb



## ICF FORM FABRICATING

### 1. BowCutters and Accessories

Free form cutters.

Part Code	Description	Contr Price	Approx Wt
I-BC12	12" BowCutter with Power Box	CALL	9 lb
I-BC24	24" BowCutter Only	CALL	12 lb
I-BC48	48" BowCutter Only	CALL	19 lb
I-MBC24	24" BowCutter with Magnum	CALL	19 lb
I-MBC48	48" BowCutter with Magnum	CALL	25 lb

### 2. Hot Wire Kit

Everything you need to build your own 4' hot wire machine.

**KIT INCLUDES:** magnum, gator cord, 2 insulators, spring and 100' roll of Nichrome wire.

Part Code	Description	Contr Price	Approx Wt
W-DHW100	Hot Wire Kit	CALL	13 lb

### Replacement Accessories

W-MAGC	Magnum Controller Only	CALL	12 lb
W-DGC	4' Gator Cord	CALL	1 lb
I-DHW100	100' 23 ga Nichrome 80 Wire	CALL	1 lb

### 3. Tajima G-Saw **NEW!**

The Tajima G-Saw cuts through ICFs, PVC, rigid foam and plastic ties faster, straighter and with less mess than other saws on the market. This handy folding saw feature aggressive push-pull cutting action and razor-sharp, triple-edge teeth hardened for long life. Positive blade lock with convenient thumb release. Comfortable, sure-grip handle. 17 teeth per inch.

Part Code	Description	Contr Price/Box	Approx Wt/Box
W-TJGSAW	Tajima ICF G-Saw	\$28.99	1 lb
W-TJGBLADE	Tajima ICF G-Saw Replacement Blade	\$13.99	1 lb

### 4. UGZ® II EverRasp

Engineered better! EPS doesn't stand a chance!

The UGZ® II EverRasp is the Professional ICF contractors' preferred choice when it comes to blasting through the toughest rasping jobs at critical tops of walls. Also used for smoothing bulges and preparing the foam surface for stucco finishing.

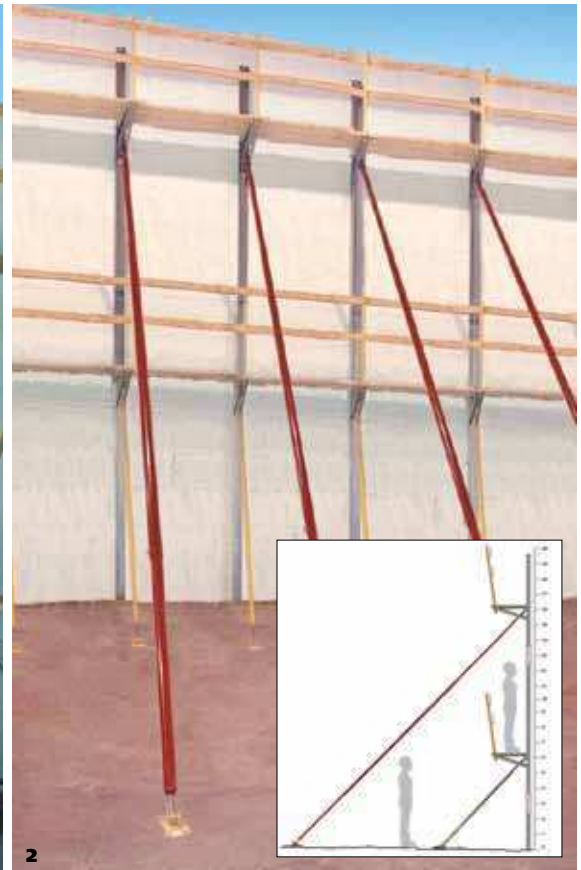
Part Code	Size	Description	Contr Price	Approx Wt
I-IIUGZ2	2" x 14"	SS Rasp 12-14 Grit	\$44.75	2 lb
I-IIUGZ4	4" x 14"	SS Rasp 12-14 Grit	\$64.75	2 lb
I-IIUGZ6	6" x 14"	SS Rasp 12-14 Grit	\$74.75	3 lb
I-IIUGZ8	8" x 14"	SS Rasp 12-14 Grit	\$84.75	3 lb
I-IIUGZK26	2" and 6" x 14"	SS Rasp Kit	\$119.75	5 lb
I-IIUGZK46	4" and 6" x 14"	SS Rasp Kit	\$139.75	5 lb

To see our full selection of rasps, call for our EIFS catalog or visit [www.wind-lock.com](http://www.wind-lock.com)

### 5. Insul-Knife™

Insul-Knife™ is one of those time-saving tools that you will wonder how you ever lived without. It is perfect for easily cutting all type of insulations including: eps foam, fiberglass, sponge foam and cotton fiber. It is an excellent tool for trimming unwanted excess foam insulation after it expands and cures.

Part Code	Description	Contr Price
W-INSULKIT	Multipurpose Insulation Kit (Knife and Sharpener)	\$42.95
W-INSULS	Multipurpose Insulation Knife Sharpener	\$10.99



## ICF BRACING SOLUTIONS BY TAPCO



Mono-Brace comes in one piece, making it easy to move.



Locking toggle pins make for quick, easy adjustment and installation.

### MONO-BRACE™ ALL-IN-ONE BRACING SYSTEM

The Mono-Brace™ and Tall Wall are interchangeable products designed for ICF wall construction.

#### FEATURES AND BENEFITS

##### One Piece, Self-Contained Package

No lost parts or delays in installation. Saves space and is easy to move.

##### Quick Installation

Locking toggle pins make for quick, easy adjustment and installation.

##### Built to Last

Galvanized and heavy-duty powder-coated steel for long life.

##### Fully Adjustable

Micro and macro adjustment make installation accurate and efficient. Adjustable platform.

##### Integrates with Buck Scaffolding

Works on high wall with readily available cost-effective buck scaffolding.

### 1. Mono-Brace™

Mono-Brace™ is easy to store, transport and use. The bracing system is self-contained and all the parts are attached to the frame. No assembly is required. Replacement parts available.

Part Code	Description	Dimensions	Contr Price	Approx Wt
W-BR8	8' Telescopic Foldaway ICF Bracing System w/safety rail bracket	8' x 5" x 2.75"	CALL	58 lb
W-BR9	9' Telescopic Foldaway ICF Bracing System w/safety rail bracket	9' x 5" x 2.75"	CALL	63 lb
W-BR10	10' Telescopic Foldaway ICF Bracing System w/safety rail bracket	10' x 5" x 2.75"	CALL	65 lb
W-BR12	12' Telescopic Foldaway ICF Bracing System w/safety rail bracket	12' x 5" x 2.75"	CALL	72 lb

Platform rating 50 pounds per square foot, handrail rated for a 200-pound point load as required by OSHA. Brace rated 10 pounds per square foot lateral wind load.

### 2. Tall Wall Leg Kit

Tapco Tall Wall Leg Kit is designed for use in ICF block wall construction from 12 ft to 24 ft and is compatible with Tapco Mono-Brace™ products. Included are all the necessary components to install the wall brace.

Part Code	Description	Dimensions	Contr Price	Approx Wt
W-BRTWL	Kit includes 4 sections of telescoping heavy wall tube, 2 end screws, 3 gravity pins, 1 foot plate.	14' x 3' x 5.5"	CALL	145 lb



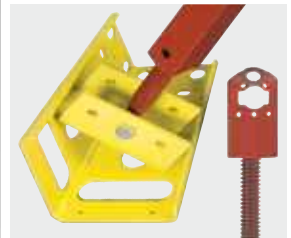
3



4



Jamb Jack™ includes a heavy-duty steel adjustment screw that allows for minute adjustments.



Professional Jamb Jack™ accessories include corner plate and panel adaptor.



Locking safety pins and adjustment tool make for quick and easy installation and adjustment for both the professional and residential Jamb Jack™ products.

### JAMB JACK™ REUSABLE WINDOW AND DOOR BRACING

Available for both professional and residential use, the Jamb Jack™ Window & Door Bracing Kit is durable, easy to use and easily adjustable.

#### FEATURES AND BENEFITS

##### Quick Installation

Up to 90% less setup time required.

##### Longlasting

Made of reusable, heavy-duty powder-coated steel.

##### Fully Adjustable

Micro and macro adjustments.

##### Easy to Use

Fits most window, door and standard openings.

##### Versatile

Easily adapted to other form systems.

### 3. Professional Jamb Jack™ Kit

Part Code	Description	Adjustment Capabilities	Contr Price	Load Capacity	Approx Wt
W-JJS	Jamb Jack Kit (short)	36"–57"	CALL	3,000 lb	19 lb
W-JJM	Jamb Jack Kit (medium)	53"–80"	CALL	3,000 lb	22.5 lb
W-JJL	Jamb Jack Kit (long)	72"–108"	CALL	3,000 lb	26 lb
W-JJCP	Jamb Jack Corner Plate	Accessory	CALL	—	4.1 lb
W-JJPA	Jamb Jack Panel Adaptor	Accessory	CALL	—	.4 lb
W-JJAT	Jamb Jack Adjustment Tool	Accessory	CALL	—	.2 lb

### 4. Residential Jamb Jack™ Kit

Part Code	Description	Adjustment Capabilities	Contr Price	Load Capacity	Approx Wt
W-JJRS	Jamb Jack Kit (short)	40"–64"	CALL	2,000 lb	24 lb
W-JJRL	Jamb Jack Kit (long)	62"–108"	CALL	2,000 lb	26 lb

### 5. Adjustment Tool

Part Code	Description	Contr Price	Approx Wt
NS W-CBR16	Wrench, Leg Fine Adjustment Tool	CALL	1 lb

NS=Not shown.



Jamb Jack™ quickly and easily fits into virtually any size window.