

Moisture Control Solutions

YORK 
The Original. The Innovator. TM

Through-Wall Solutions

Flash-Vent™

Copper Fabric Flashing/Drainage System (Asphalt-Free)

Nominated for World of Concrete's "Most Innovative Products of 2004," York Flash-Vent™ composite flashing makes moisture drainage easy with a proprietary, patent pending surface layer of non-woven wicking fabric that draws moisture behind and beneath mortar droppings right out through the mortar joint. It's the world's first asphalt-free, through-wall copper flashing product that's also a complete moisture drainage system... eliminates the need for mortar deflection netting, drip edges, and other components.

Saves Time And Money

- Fewer components to purchase and install
- No mortar deflection netting or drip edge needed
- Lighter weight allows longer 40 ft. rolls, meaning fewer lap joints and less opportunity for water to penetrate

High Performance

- Non-woven wicking layer draws moisture behind and beneath mortar droppings and out through the mortar joint
- Heavy Duty Fiberglass bonded to copper with clean, asphalt-free rubber adhesive
- Copper core is permanently waterproof, high in tensile strength, and resistant to all acid and alkali reaction

Versatile

- Non-woven wicking fabric also provides air intake
- Compatible with most caulks and sealants; no special flashing mastic needed
- Compatible with other building envelope systems
- Meets latest air barrier codes
- Can be used in non-cavity wall applications, such as: manufactured stone, stucco, pre-cast, etc.

Green

- All of our copper based, non-asphaltic flashings will add to your LEED® calculations.
- Made of 90% recycled copper
- Visit our website or call us for our LEED® data sheets on these products to see how.



Flash-Vent™ flashing/drainage system

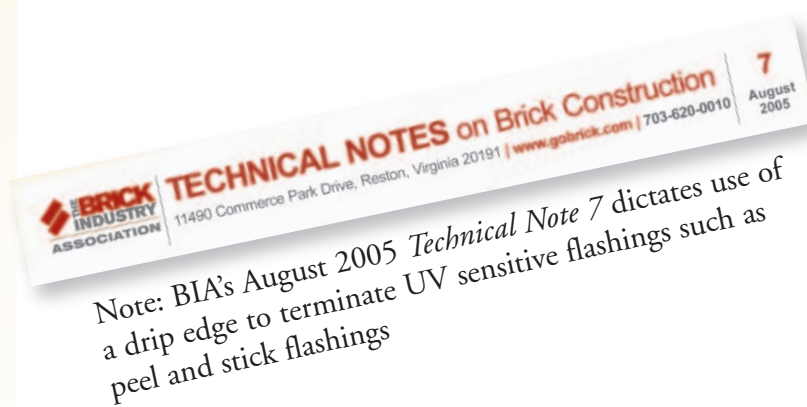


Easy To Work With

- Lightweight, flexible, easily formed by hand on-site
- Easy job site identification: color coded by copper weight
- Approved for installation with Universeal sealant, used as a non-penetrating termination bar

The Result

- A lightweight, asphalt-free, through-wall copper flashing product that's also a complete moisture drainage system...without the need for mortar deflection netting or drip edge and is warranted for the life of the wall



VS.

Flash-Vent™ vs. **Peel & Stick Products**

Copper Flashing/Drainage System
Non-Penetrating Termination

	Flash-Vent™ NP system	Peel & Stick system
Elapsed Time for pictured installation	Flash-Vent™ NP at 16" 17 minutes	Peel & Stick at 24" * 32 minutes
COMPONENT:		
Flashing	\$2.35/lf	\$1.35/lf
Drip Edge	0	\$1.30/lf
2" Mortar Catch	0	\$2.60/lf
Plastic Term Bar**	0	\$0.45/lf
Primer***	\$0.30/lf	\$0.12/lf
Polyether Sealant	\$2.85/lf	0
TOTAL		\$5.82/lf

* Peel & Stick membrane 24" wide to reach above Mortar Catch device.
 ** Prices are estimated per linear foot at Manufacturer's suggested retail.
 *** For Stainless Steel add \$1.00/lf
 **** 250sf gal-1250/gal 24" wide @ \$15.00/gal-\$0.12/lf

YORK
Since 1935

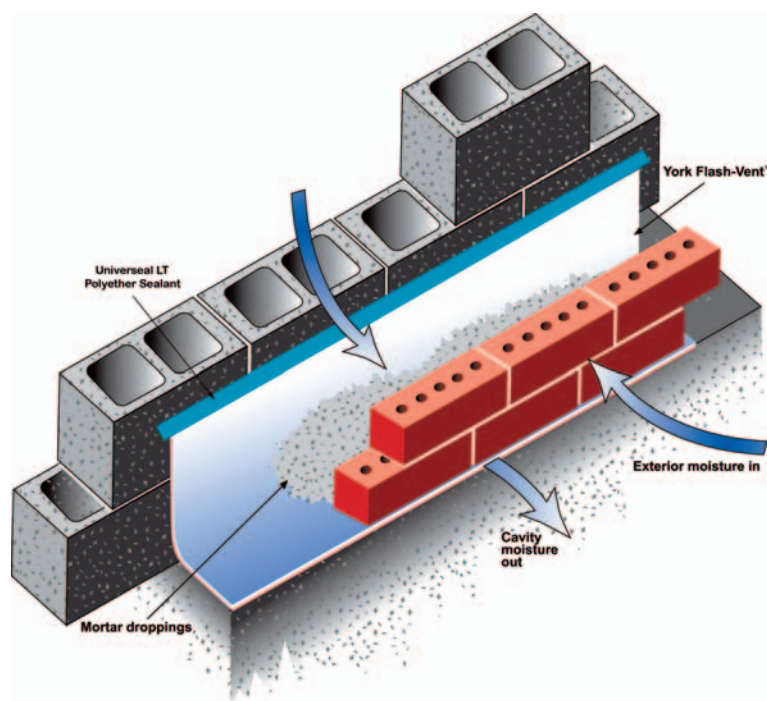
Flash-Vent NP system

Elapsed Time for pictured installation:

Flash-Vent™ NP = 17 minutes
Peel & Stick = 32 minutes

Total Cost per linear foot

Flash-Vent™ NP = \$2.65/lf
Peel & Stick = \$5.82/lf



- Flash-Vent NP system saves a tremendous amount of time and money by eliminating the need for installation of drip edges, mortar deflection netting, and termination bar
- Flash-Vent flashing forms easily and can be run in longer lengths, which means less lap joints
- Liquid termination bar eliminates the need to puncture the air barrier with fasteners
- Our copper flashings will stand in the vertical unassisted; the termination bar serves to seal it against the backer wall
- Use of preformed corners and end dams saves time and ensures quality

York's commitment to "Green" manufacturing and "Green" products were the major reasons for our replacement of asphaltic adhesives in favor of renewable rubber alternatives. York uses recycled copper and this in combination with our adhesive choices makes York's copper flashings amongst the best choices for your project and the environment. LEED® data sheets are available for download on our Web site.



Through-Wall Flashing

Multi-Flash™ 500 Series

Copper Fabric Flashing (Asphalt-Free)

Multi-Flash™ 500 series copper offers the long-life performance of standard 3, 5 or 7 oz. asphalt-laminated copper fabric flashing, at only 60% the weight. Despite its five layers of copper, fiberglass and other waterproofing material, it's extremely flexible and easily formed at jobsite. It's a major breakthrough in masonry wall protection, with an unrivaled combination of performance, economy and efficiency.

- Compatible with other building envelope systems
- Lower freight costs
- Works in all temperatures (-25°F - 125°F) for fast installation and no special storage requirements
- Meets latest air barrier codes
- Compatible with all current air barrier membranes and sprays

Cop-R-Tex Duplex®

Sheet copper bonded on both sides to heavy waterproofed crepe kraft paper; the duplex surface texture provides full bonding with mortar. Cop-R-Tex Duplex is thin, clean, flexible and affordably priced.

- Available in 3 or 5 oz. per square foot weights
- Made of 90% recycled copper
- Sold in 60' rolls; may be slit to widths up to 36"
- Offers a clean work surface, but offers less puncture and tear resistance compared to York's Multi-Flash™ 500 Series



- Lighter weight allows longer 60-ft. rolls for fewer lap joints (40' for 7 oz.)
- Made of 90% recycled copper
- Meets all specifications for York's copper fabric flashing
- Flexible – easy on-site fabrication of end dams and corners
- Compatible with most caulks and sealants; no special flashing mastic needed
- Clean – no asphalt or parting agents

Available in 3 oz. (gold), 5 oz. (red) or 7 oz. (green)



York Seal™

(Self-Adhering)

Rubberized Asphalt Flashing

York Seal Flashing is a durable self-adhering flashing for through wall flashing or air & vapor barrier applications. York Seal flashing is made with an 8 mil cross-laminated polyethylene carrier, ensuring superior puncture resistance and tensile strength, and a UV exposure rating of 30 days.

- Available in 75' rolls; 12", 18", 24", and 36" widths

York Manufacturing strongly recommends that a primer be used with York Seal flashing to ensure proper adhesion, and that all vertical surfaces be secured with termination bars, reglets or other mechanical means.

Through-Wall Flashing



Hydro-Gard™

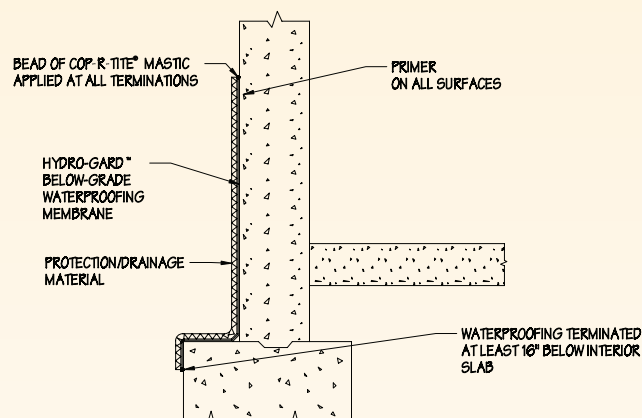
Below grade waterproofing

The York Hydro-Gard™ waterproofing membrane is a specially engineered, self-adhesive composite for below grade applications. Designed for waterproofing concrete, masonry or wood structures, applications can include foundation walls, tunnels, earth shelters, structural concrete decks, plaza decks, parking decks and split slab construction. With a super-tough 7-mil polyethylene carrier and a total thickness of 60 mil, it provides outstanding strength, extreme high and low temperature stability and hydrostatic pressure resistance to 150 feet.

- Available in rolls 66.7' long x 36" wide
- Prime surfaces with a suitable primer

Waterproofing Membranes

Hydro-gard installation

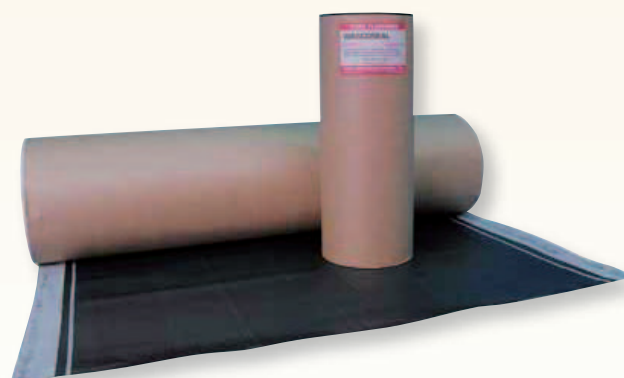


WascoSeal®*

Ideal for air and dust barriers, basement walls and basement floors, our WASCOSEAL® waterproofing membranes feature tough and tear-resistant PVC that is carefully calendared for uniform thickness to inhibit puncture during installation. This advanced composite membrane will not crack or tear when bent or stretched, and is stabilized to resist exposure without physical deterioration when tested in accordance with A.S.T.M. standards D-822 for a period of at least 400 hours.

- Available in 20 - and 30-mil thickness, with standard widths of 12", 16", 18" and 24"
- 20 mil at 150' long, 30 mil at 100' long

*The *WASCOSEAL® trademark is a registered trademark of Wasco, Inc.*



Masonry Flashing

YorkShield 106 HP™

High Performance Copper Laminated Flashing

- Super tough backing laminated for extreme puncture and tear resistance for superior performance
- Easy to work with — can be formed without using a mechanical brake, conforms to any shape
- Compatible with all pressure treated woods, mortar and cement
- Warranted for the life of the building*



Termite Shield

Laminated Copper Termite Barrier

- Provides superior protection against termites and other insects
- Unlike aluminum and galvanized steel termite shields, YorkShield 106 TS will not corrode or degrade when exposed to pressure treated woods and / or cement products
- Compatible with all adhesives, caulks and sealants
- Flexible and easy to use on foundations and basement posts
- 100% rubber adhesive will not stain concrete, vinyl or wood
- Warranted for the life of the building

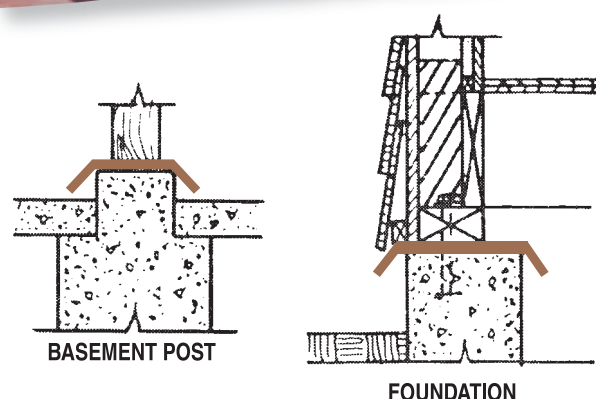


Home-Seal™

Door and Window Sealing Tape

Home-Seal™ tape is a special self-adhesive composite membrane made with 5 mils of high strength, cross-laminated polyethylene bonded to 20 mils of specially modified self-adhesive asphalt. Combining high strength, low temperature adhesion and high temperature stability, it is used to seal around doors, windows and other construction to limit air and moisture transmission. To ensure proper initial adhesion in a wide range of conditions, prime surfaces with a suitable primer.

- Available in 75' rolls; 4", 6", 9" and 12" widths



- Visit www.yorkmfg.com for installation details

York UniverSeal

UniverSeal™ US-100 Liquid Termination Bar

UniverSeal US-100 is recommended for use as a liquid term bar with copper flashings and in that application can be applied over the air barrier coatings and is also appropriate for use with steel stud or masonry back-up walls.

UniverSeal US-100 Termination Bar is a non-shrinking, 100% solids, moisture-cure polymer and contains no solvents or VOC's. It skins in one hour, cures completely in three to seven days (cure rate varies with temperature and relative humidity) and is paintable within 24 hours.

- *UniverSeal derives its name from it's universal compatibility*
- *0% VOC's*

GreatSeal LT-100

GreatSeal™ LT-100 Liquid Tape

GreatSeal LT-100 Liquid Tape is for use on ASTM C 1177 exterior gypsum sheathing (Dens Glass Gold®), Foamular®, Styrofoam®, EPS, fiber-board and plywood construction materials. It can be left exposed for up to 6 months. It is compatible with asphaltic materials.

GreatSeal Sealant LT-100 Liquid Tape is a polyether based, moisture curing, elastomeric, vertical seam sealer. It forms a seamless, monolithic exterior working surface that will keep the structure watertight. Its distinctive blue color allows for quick & easy visual verification that all seams and gaps have been effectively sealed from wind and rain.

GreatSeal LT-100 Liquid Tape is a non-shrinking, 100% solids, moisture-cure polymer and contains no solvents or VOC's. It skins in one hour, cures completely in three to seven days (cure rate varies with temperature and relative humidity) and is paintable within 24 hours.

GreatSeal LT-100 Liquid Tape incorporated into the project allows compliance to International Energy Conservation Code (IECC) mandatory requirements to seal the building envelope (seal all joints between construction material) (Section 502.4.3), mandatory Air Leakage control (Section 502.4) and mandatory Moisture Control (Section 502.5).

York Cop-R-Tite®

Flashing Mastic

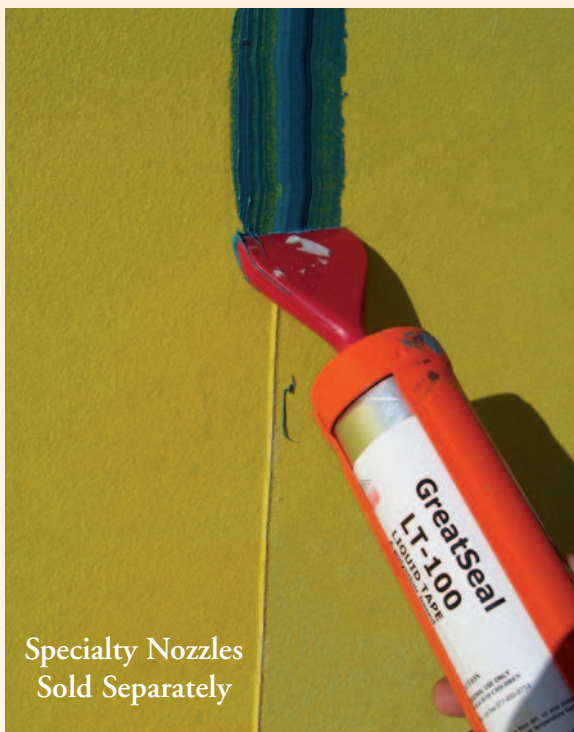
Cop-R-Tite® mastic is manufactured to a trowel grade consistency for a tough coating with strong adhesive qualities.

- *Available in 5-gallon pails or cases of 20 30-oz. tubes (covers 30 square feet per gallon)*

Adhesives and Sealants



Specially designed nozzle creates proper geometry for liquid termination bar



Specialty Nozzles
Sold Separately



Accessories

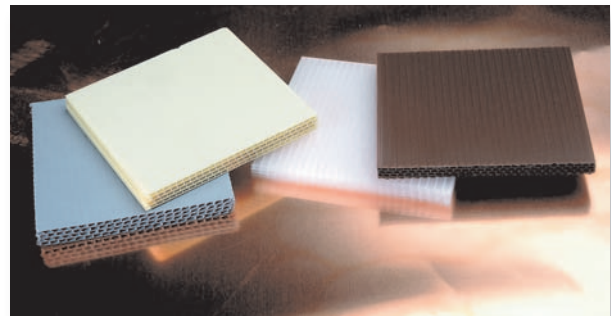
Termination Bars

Made of high-strength extruded polypropylene, York Termination Bars are 8' long by 1" wide by 1/8" thick. They are recommended for fastening vertical terminations not secured in a mortar joint or reglet. To avoid galvanic reactions and corrosion, always use plastic termination bars rather than aluminum with York copper-based flashings.



Weep Vents

York Weep Vents are made of durable polypropylene. Standard colors are gray and clear. Available in 3/8" x 2-1/2" x 3-3/8".



Inside & Outside Corners and End Dams

Pre-fabricated inside corners, end dams and outside corners by York offer a high quality product with the assurance that the corner or end dam is watertight. Save time and money on the job site with these pre-fabricated pieces made of York's Multi-flash 500 copper flashing that is compatible with all sealant choices and air barrier membranes & sprays. Warranted for the life of the wall.



Approved AIA Learning Unit Seminars

During the past 3 years, York has completed over 1,500 of these popular programs. Ask about how you can participate!



Looking for LEED® ratings?

LEED® data sheets are available for download on our Web site. Or call 800-551-2828 to learn how York laminated copper flashings can improve your LEED® calculations.



4specs.com

YORK
Since 1935

TM

