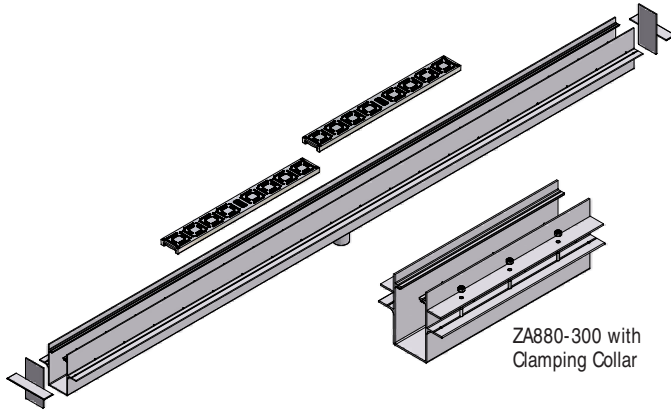


ZA880-300 Extruded Aluminum Trench Drain

13



Features and Benefits

- 96" Channel Sections with 24" Grates
- Flanged on Both Sides of Trench
- Four-Corner Lockdown Decorative Grates
- Compatible with Vapor Barrier Applications
- Mechanically Fastened Joint Connector with Integral Gasket
- Optional – Clamping Collar and Pan (-KC)

ZA880-300 Applications

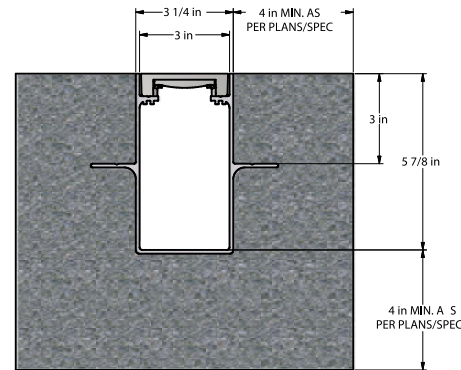
Pools

Residential

Shower Drains

Decks

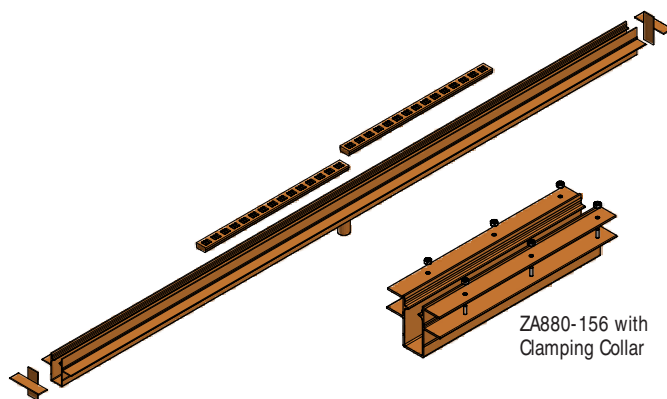
Installation Specification



Consult Plans and Specifications

Engineering Specification Zurn ZA880-300 Extruded Aluminum Trench Drain System. 3" interior width x 6" overall height x 96" long, 48" long, or 24" long. Complete with 1-1/2" wide flanges on one or both sides. Material to be Aluminum Alloy T-6063. Cast decorative bronze grate conforms to ASTM B584 Copper Alloy No. 844. Trench is anodized after extrusion to match grate color. End caps and outlets factory attached at the location determined by the customer before anodizing. For downloadable CSI format specification, visit www.zurn.com.

ZA880-156 Extruded Aluminum Trench Drain



Features and Benefits

- 96" Channel Sections with 24" Grates
- Flanged on Both Sides of Trench
- Bronze Decorative Grate
- Compatible with Vapor Barrier Applications
- Optional – Clamping Collar and Pan (-KC)

ZA880-156 Applications

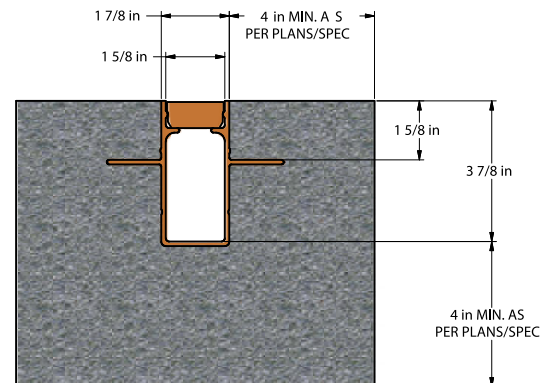
Pools

Residential

Shower Drains

Decks

Installation Specification



Consult Plans and Specifications

Engineering Specification Zurn ZA880-156 Extruded Aluminum Trench Drain System. 1.63" interior width x 4" overall height x 80" long. Complete with 1-1/2" wide flanges on side. Material to be Aluminum Alloy T-6063. Cast decorative bronze snap-in grate conforms to ASTM B584 Copper Alloy No. 844. Trench is anodized after extrusion to match grate color. End caps and outlets factory attached at the location determined by the customer before anodizing. For downloadable CSI format specification, visit www.zurn.com.