

ZURN EcoVantage™

Water Conservation Fixture Systems



ZURN ENGINEERED WATER SOLUTIONS™



The Zurn EcoVantage™ Difference

Today's building owners and facility managers face increasing cost challenges, one of which is reducing water consumption. Our EcoVantage series provides a mix of innovative LEED/Green listed products including water-free urinals, 1/8 gallon ultra low flow urinals, high efficiency (HET) pressure-assist toilets, and 1.28 ultra low flow flush valve fixtures. Lavatories can be installed with self-generating sensor faucets, metering faucets, and low flow pressure compensating aerators that deliver the same level of performance as traditional fittings with minimal water consumption. These products can be installed for new construction or retrofitted to existing installations to lower building costs and provide long-term savings.

Buildings can be updated to the latest Zurn washroom technology that reduces bacteria transfer and increases restroom hygiene. Our AquaSense line of flush valves and sensor faucets provides battery or hardwire solutions. Zurn's sensor technology is reliable and provides building owners with a variety of application choices.

Zurn EcoVantage fixture systems can be easily configured. A custom designed, internet-based computer modeling program allows the user to quickly mix and match components depending on need and performance requirements. The user can register on line at www.zurn.com for access authorization. The program enables a user to configure the fixture and brass components to meet specific design applications. The program incorporates an internal mapping system that minimizes component pairing errors and assists in creating the perfect fixture system for your building.

Zurn provides peace of mind by standing behind the entire installation. Zurn adds value to the entire supply chain from product selection, quality, performance, and delivery. EcoVantage Systems can be custom packed and tagged to keep components and fixtures together, therefore eliminating installation errors and job sorting.

For assistance with your next LEED/water conservation project, look to Zurn for design assistance. We can help deliver innovative solutions outside of the standard LEED criteria.

Contact us at 1-800/997-3876 or e-mail us at ZurnOne@zurn.com.



Water Savings · High Performance · Reduced Costs

Qualification For LEED Credits

Zurn Commercial Brass Product LEED Specification Qualification Guide

The Leadership in Energy and Environmental Design (LEED™) Green Building Rating System represents the U.S. Green Building Council's effort to provide a national standard for what constitutes a "green building." Through its use as a design guideline and third party certification tool, it aims to improve occupant well-being, environmental performance, and economic returns of buildings using established innovative practices, standards, and technologies.

Application for LEED credits starts with the architects and other building designers. Through the use of carefully calculated floor plans, environmentally friendly building materials, energy efficient products, and innovative system designs, buildings can obtain a high ranking LEED certification. This certification process produces buildings that are great environments and will save energy and resources every day.

Zurn Industries, Inc. is striving to provide as many products as possible to enable architects to design as "green" as possible. The LEED rating system provides a set of performance standards to serve as a guideline for each of the phases of design and construction. The categories addressed are Sustainable Sites, Water Efficiency, Energy and Atmosphere, Materials and Resources, Indoor Environmental Quality, and Innovation in Design.

The products presented within this catalog can provide assistance in the Water Efficiency section of the LEED template. In the Water Efficiency section a total of five credits may be obtained: two credits for water efficient landscaping, one credit for innovative wastewater technologies, and two credits for water use reduction.

WE 3.1 and WE 3.2 Water Use Reduction

Credit 3.1 – Water Use Reduction: 20%

Using Zurn Commercial Brass products rated below the baseline fixture performance requirements as stated by the Energy Policy Act of 1992 would contribute to this credit as long as the building as a whole reduces water consumption below the baseline by 20%.

Credit 3.2 – Water Use Reduction: 30%

Using Zurn Commercial Brass products rated below the baseline fixture performance requirements as stated by the Energy Policy Act of 1992 would contribute to this credit as long as the building as a whole reduces water consumption below the baseline by 30%.

EcoVantage™ Series Flush Valve Operated Toilets

Zurn has revolutionized the traditional 1.6 gpf flush valve water closet by introducing our 1.28 gallon per flush hands free sensor-operated flush valve and bowl combination. The EcoVantage Series Systems are engineered for optimal performance and hygiene in the most demanding application environments.

The Energy Policy Act of 1992 established a baseline of 1.6 gallon per flush flow requirement for water closets. Toilet flushing alone accounts for the most water consumption in commercial building applications, consuming approximately 1.2 billion gallons per day*. Installing water conserving fixtures has measurable economic, environmental, and health benefits.



Features and Benefits

Industry Leading MaP Performance – Superior Flushing Action

- Superior line carry
- Outperforms most existing 1.6 gpf water closet combinations
- Large water spot
- Siphon jet flushing action
- 2-1/8" fully glazed trapway
- Sensor flush with smart technology
- Sanitary hands-free operation with the latest in sensor technology

1.28 Gallon Per Flush Every Time

- Consistent water savings with each flush
- Manual override button

Chloramine Resistant Internal Seals

- Long-lasting, dependable performance in harsh water conditions

Battery Operated

- Optimized electronics for 200,000 cycle or three-year battery life

All Metal Chrome-Plated Housing

- Heavy-duty commercial grade cast brass valve body

Easy To Retrofit

- In many cases the wall hung water closet can be retrofitted to existing carrier and outlet rough-ins
- Large footprint to cover existing installation
- Flush valve mounts to standard water closet stop valve

1.28 gpf Water Closets

Wall Hung Bowls

- | | |
|-------|-----------------------------------|
| Z5615 | Elongated Toilet |
| Z5616 | Elongated Toilet with Bedpan Lugs |
| Z5617 | Elongated Toilet with Backspud |

Floor Mounted Bowls

- | | |
|-------|--|
| Z5655 | Elongated Toilet |
| Z5656 | Elongated Toilet with Bedpan Lugs |
| Z5657 | Elongated Toilet with Backspud |
| Z5665 | ADA, Elongated Toilet |
| Z5666 | ADA, Elongated Toilet with Bedpan Lugs |
| Z5667 | ADA, Elongated Toilet with Backspud |
-

* The Energy Policy Act (EP Act) of 1992

EcoVantage™ Z5798 Ultra Low Consumption Urinal

The Pint™

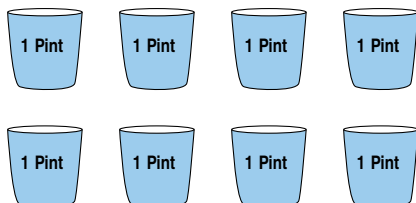
Zurn continues to demonstrate leadership in plumbing system innovation. The Z5798 ultra low consumption (1/8 gpf) urinal system is the latest product to follow in that pioneering spirit. It leads the way with ultra low water consumption, latest in sensor technology, and high quality vitreous china.



“The Pint”



The ultra low consumption series urinals consume one pint of water providing 85% savings with each flush.



Typical 1.0 gpf Urinal

Features and Benefits

1/8 Gallon of Water Per Flush Every Time

Internal flow regulator guarantees consistent water savings with each flush

Sanitary Washdown and Trap Water Exchange

Optimized distribution plate and water trap pass all ASME A112.19.2-2003 urinal performance tests

High Efficiency Alternative to Waterless Urinal

- Lower building maintenance costs
- No replacement traps to buy or maintain
- Satisfies end user who prefers washdown action, providing more sanitary feel
- Saves over 30,000 gallons of water per year over standard urinal

Sensor Flush with Smart Technology

Sanitary hands-free operation with the latest in sensor technology

Battery Operated

Optimized electronics for 200,000 cycle battery life

All Metal Chrome-Plated Housing

Heavy-duty commercial grade construction to resist vandalism

Chloramine Resistant Internal Seals

Long lasting, dependable performance in harsh water conditions

Easy to Retrofit

- In many cases, urinal can be retrofitted to existing carrier and outlet rough-ins
- Large wall footprint to cover existing installations
- Flush valve mounts to standard urinal stop valves

Z5798 Comparative Cost of Operation

	Male Occupants in Facility	Frequency of Use (Daily)	Gallons Per Cycle (Day)	Total Gallons Per Year	Water/ Sewage Yearly Cost
Z5798	50	2	12.5	3,250	\$ 22.75
1.0 Gallon Per Flush	50	2	100	26,000	182.00
1.5 Gallon Per Flush	50	2	150	39,000	273.00
3.0 Gallon Per Flush	50	2	300	78,000	546.00

The Z5798 total yearly cost of operation is \$22.75. The ROI calculation based upon water/sewage alone is quite simple. In addition to the water/sewage savings, many municipalities offer rebates between \$200-\$300 for installing high efficiency urinals. Please feel free to contact our Customer Service Department to discuss your municipality and application.

Model Description

Model	Description
Z5798	The Pint Top Spud, 0.125 gpf Ultra Low Consumption Stall Urinal
Z5799	The Pint Back Spud, 0.125 gpf Ultra Low Consumption Stall Urinal
Z5738	The Small Pint Top Spud, 0.125 gpf Ultra Low Consumption Small Footprint Urinal
Z5758	The Retro-Pint Top Spud, 0.125 gpf Ultra Low Consumption Enlarged Retrofit Footprint Stall Urinal
Z5759	The Retro-Pint Back Spud, 0.125 gpf Ultra Low Consumption Enlarged Retrofit Footprint Stall Urinal

Zurn E-Z Sensor Faucets



Features and Benefits

- Water Conserving
- ADA Compliant
- Power Supply Options
- Hands-Free Sanitary Operation
- Vandal-Resistant Aerator
- Automatic 30-Second Time Out
- Highly Polished, Chrome-Plated Cast Brass Bodies
- Low Battery Indicator Light
- In-Line Filter
- Factory Set Sensor Range
- Optional Accessories
- Three-Year Warranty



Z6920

Z6912

Z6913

Z6922
Wall Mount

Z6915

Innovations In Electronics

Zurn puts the EASY into sensor faucet installation with our line of automatic E-Z Sensor Faucets. Unlike other sensor faucet manufacturers that have different model faucets for alternative energy installations, Zurn has combined the technology of four into one. Our family of E-Z faucets utilizes 6 VDC power so the same model faucet can be installed in your choice of supplied power:

- EcoVantage Self-Generating Faucet – 10-year battery life
- Non-EcoVantage Standard Battery Faucet – three-year battery life
- Plug-In Faucet – comes standard with battery back-up feature
- Hardwire Faucet – comes standard with battery back-up feature

EcoVantage™ Series Hydro Generator Electronics

How The Hydro Generator Works

As the Zurn EcoVantage Faucet is used, water is routed through the hydro generator and past an internal turbine. While the turbine spins, electrical energy is stored in a rechargeable cell. The electricity generated by the hydro generator greatly reduces the need for cell replacement. The hydro generator virtually provides a self-sustaining system for approximately 10 years.

Features and Benefits

- Self-generating power
- Ten-year battery life
- Replaceable rechargeable battery
- Rechargeable battery will maintain its charge for up to 90 days without faucet activation
- Compact inline design
- Choice of spout designs
- Hydro generator retrofits to currently installed Zurn E-Z Faucets
- 0.5 gpm low consumption aerator
- All brass spouts
- LEED credit applicable
- Three-year warranty

P6900-GEN



Zurn AquaSpec Pre-Rinse Unit

AquaSpec Commercial “Jet Spray” Washer – Save up to \$1,000 Every Year

Up To 80% Water Use Reduction

Vigorous spray pattern increases performance and water saving efficiency over older models. The Zurn Jet Spray Washer uses only 1.24 gallons per minute compared to standard 2 to 6 gpm valves. Retrofit your pre-rinse units with the efficient and economical Jet Spray Washer and you can save hundreds of dollars in water and energy costs.

Features and Benefits

- Easy installation
- The most powerful rinser on the market
- Savings in water, energy, and sewer
- Quick payback
- High performance and incredible hot water savings using 1.24 gpm at 60 PSI
- Anti-corrosive stainless steel nozzle
- Solid brass, triple chrome-plated sprayer body
- Insulated handle ensures comfortable grip
- Complies to ASME A112.18.1-2005 and CSA B125.1-2005
- Interchangeable with all brands
- Any repairs are easy with standard gaskets
- Standard, protective, full surrounding dish guard bumper
- Five-year warranty



**Z80000-PR1
Zurn Jet Spray Unit**

Zurn Jet Spray Washer Savings

Usage	Hours of Spray Valve Usage	Water Savings (Gallons Per Day)	Wastewater Savings (Gallons Per Day)	Gas Savings (Therms Per Day)	Annual Dollar Savings
Light	2 hours per day	100	100	0.7	\$300 - \$400
Medium	4 hours per day	200	200	1.3	\$700 - \$900
Heavy	6 hours per day	300	300	2.0	\$1000 - \$1300

Zurn Hand Dryer, Shower Head, and Aerators

The Zurn Standard in Hand Drying Quality

- Polished stainless steel cover
- High warm air volume at 275 CFM
- Lowest noise level in product class
- Advanced technology with greater durability
- 15-second dry time cuts normal dry time by 50%
- Offers a 90-95% cost savings over paper towels
- Heating element at air exit for maximum heating efficiency
- Dynamically balanced blower wheel for vibration-free operation
- 10-year warranty backed by convenient nationwide parts and service work



Zurn Water Conserving, Pressure Compensating Aerators

Zurn AquaSpec G62620

- 3F Manual Faucet Female 0.5 GPM Vandal-Resistant Aerator
- 16F Manual Faucet Female 1.0 GPM Vandal-Resistant Aerator
- 17F Manual Faucet Female 1.5 GPM Vandal-Resistant Aerator

Zurn AquaSpec G63507

- 3M Manual Faucet Male 0.5 GPM Vandal-Resistant Aerator
- 16M Manual Faucet Male 1.0 GPM Vandal-Resistant Aerator
- 17M Manual Faucet Male 1.5 GPM Vandal-Resistant Aerator

Zurn Commercial Brass P6900-20F

- Sensor Faucet 0.5 GPM Vandal-Resistant Aerator

Zurn Commercial Brass P6900-20F-GN

- Sensor Faucet 0.5 GPM Gooseneck Vandal-Resistant Aerator



AquaSpec G62620



AquaSpec G63507



Commercial Brass P6900-20F



Commercial Brass P6900-20F-GN



The Zurn EcoVantage™ Showerhead

Features

- Rated the #1 showerhead by leading industry organization
- Conserves water and saves money while enhancing pressure, performance, and appearance
- Nine-jet turbo massage is adjustable – gentle needle spray to forceful jet
- Non-aerating spray means less temperature loss with maximum energy savings
- Pressure-enhancing Zurn Power
- Consistent flow rate regardless of water pressure
- Non-removable flow compensator
- Self-cleaning and maintenance free
- Installs easily by hand
- Meets or exceeds ANSI specifications
- California Energy Commission Certified
- Five-year warranty



Model	Flow Rate	Description	Quantity
Z7000-S8	1.75 GPM	Chrome	50/Case
Z7000-S9	1.5 GPM	Chrome	50/Case

EcoVantage™ Waterless Urinals

Revolutionary Waterless Technology

The Zurn Z5795 and Z5796 waterless urinals are waterless, non-cartridge urinals that save water, provide a safe, sanitary environment for restrooms, and reduce both building operating and maintenance costs.

Zurn Z5795 and Z5796 waterless urinals can be used for new construction as well as retrofitting existing urinal installations. Simply install the urinal, fill the trap with Zurn AquaGreen™ sealant, and it is ready to use. No water supply is required.



Z5795



Z5796

Why Waterless Urinals?

- Reduces Water and Sewer Bills
- Improves Restroom Hygiene
- Hands-Free Operation
- Environmental Benefits
- Innovative Technology LEED Credit
- Reduces Installation Costs (No Inlet Piping)
- Reduces Maintenance Costs (No Overflows)

How The Zurn Z5795 Waterless Urinal Works

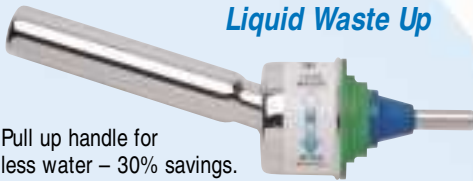


Water Conserving Zurn Dual Flush Handle



Liquid Waste Up

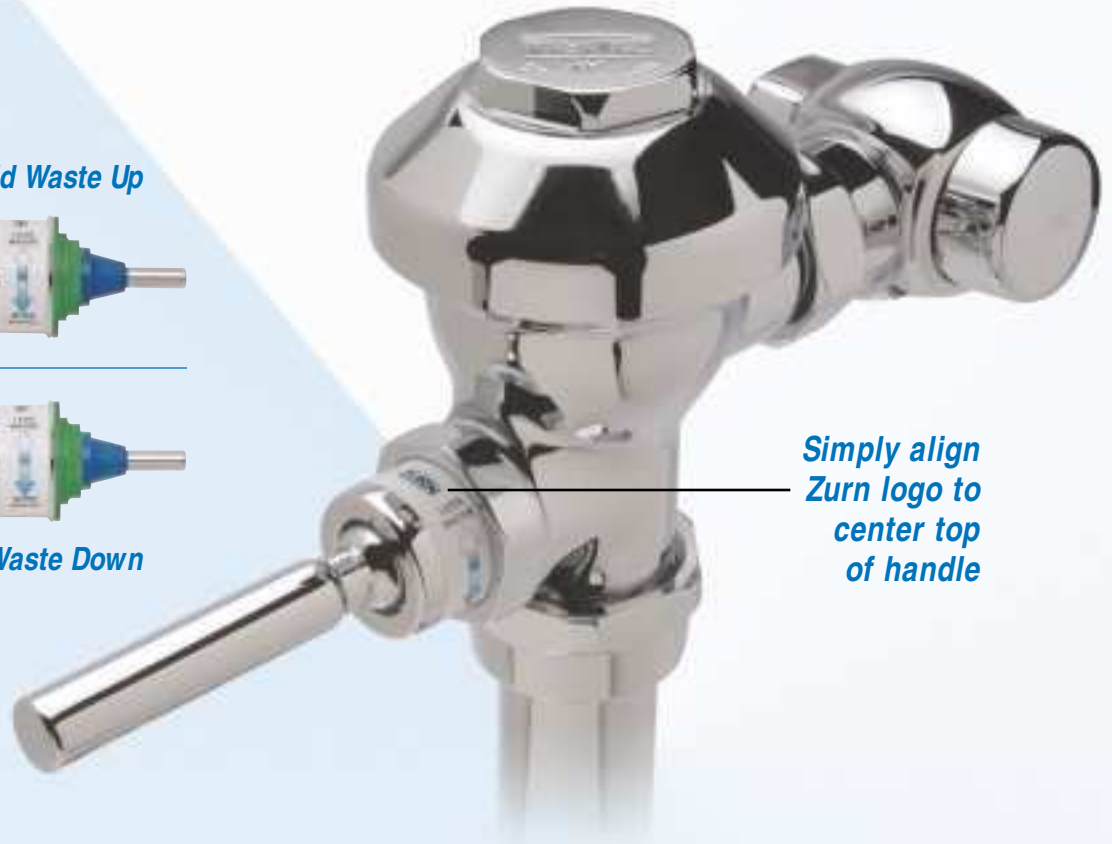
Pull up handle for less water – 30% savings.



Push down handle for normal flush.



Solid Waste Down



Simply align Zurn logo to center top of handle

Save water while controlling building costs with the Dual Flush handle from Zurn. The Dual Flush handle allows the user to choose the flush direction of the handle. Push down to flush solid waste or pull up for a 30% water saving flush for liquid waste. As easy as that.

The Zurn P6000-M-ADA-DF Dual Flush handle can be used to retrofit existing flush valves so you can start saving water today. Simply align the Zurn logo to the center top of the handle.



A wall label is provided with each handle.

EcoVantage™ Series Pressure-Assist Toilets

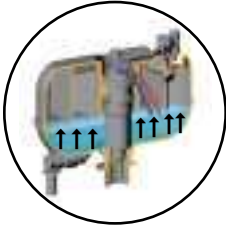


Revolutionary Pressure-Assist Technology

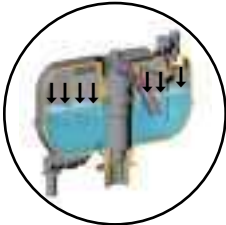
Save 40% More Water Than Any Conventional 1.6 gpf Pressure Type Units

EcoVantage 1.0 gallon single flush or dual flush systems use pressure instead of gravity to create a strong flushing action for either liquid or solid waste.

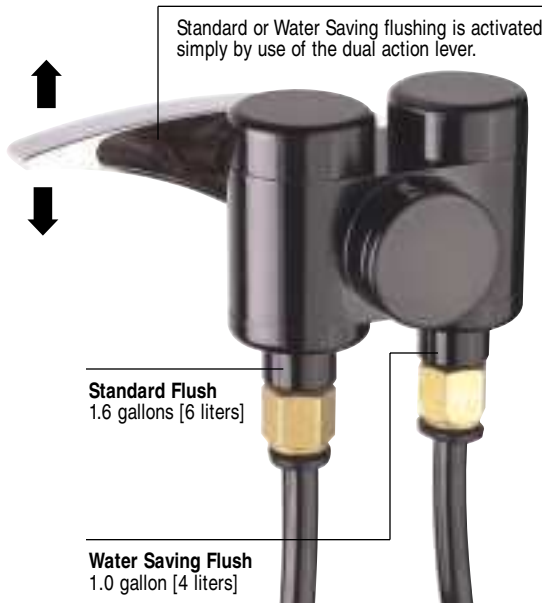
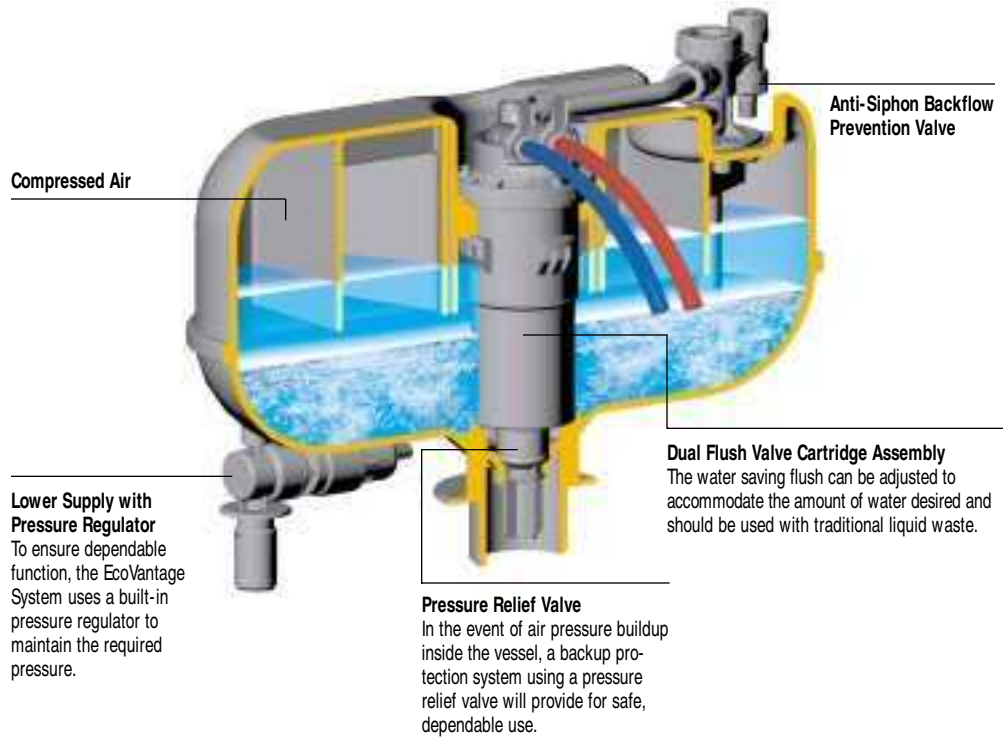
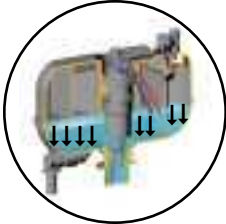
Water Flows Into Vessel



Fully Charged, Ready to Flush



Compressed Air Drives the Water From Vessel Into the Bowl



Simple Installation:



DFC valve can be mounted in several locations within tank.



After DFC valve is in place, handle snaplocks onto valve.



Dual position flush-action can be changed for either operation: 1.0 gal. up or down (or) 1.6 gal. up or down, by simply reversing the DFC supply lines. No tools required.



EcoVantage™ Series Pressure-Assist Toilets



Revolutionary Pressure-Assist Technology

Zurn EcoVantage Systems

EcoVantage has revolutionized the industry by introducing a dedicated pressure tank and bowl combination that is engineered for optimal performance backed by a 10-year warranty.

LEED/Green Conservation Solutions

The water conserving 1.0 gallon flush or dual flush EcoVantage toilet can save 40% more than any competitive 1.6 gallon single function system on the market. The EcoVantage dual flush design provides the user the choice of 1.0 gallon [4 liters] for liquid waste and 1.6 gallons [6 liters] for discharging solid waste.

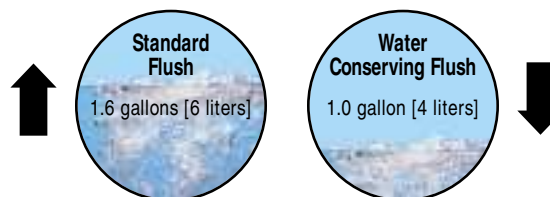
Industry Leading MaP Performance – Superior Flushing Action

- Water conserving and standard flush MaP performance test rating of 1,000 grams miso paste*
- Superior drain line carry
- Outperforms gravity/siphon jet systems
- Quiet flush

Benefits and Features

- No tank sweating
- Dependable pressure protection system
- Eliminates leaking between flushes
- Most accurate and consistent flushing volume
- Pneumatic ADA handle actuate with less than 2 pounds of force
- Paired performance
- All EcoVantage system components are from a single manufacturer – Zurn
- Ten-year warranty

User Selects Flush ...



Model	Description	High Efficiency Toilets (HET's) Gallons Per Flush		
		1.6 gpf	◆1.0 gpf	◆ Dual Flush 1.0 gpf/1.6 gpf
Z5560	ADA Height, Elongated, Floor Mounted	X		
Z5561	ADA Height, Elongated, Floor Mounted		X	
Z5562	ADA Height, Elongated, Floor Mounted			X
Z5570	Elongated, Floor Mounted	X		
Z5571	Elongated, Floor Mounted		X	
Z5572	Elongated, Floor Mounted			X
Z5575	Round Front, Floor Mounted	X		
Z5576	Round Front, Floor Mounted		X	
Z5577	Round Front, Floor Mounted			X
Z5580	Elongated, Floor Mounted, Rear Discharge	X		
Z5581	Elongated, Floor Mounted, Rear Discharge		X	
Z5582	Elongated, Floor Mounted, Rear Discharge			X
Z5585	ADA Height, Elongated, Floor Mounted, Rear Discharge	X		
Z5586	ADA Height, Elongated, Floor Mounted, Rear Discharge		X	
Z5587	ADA Height, Elongated, Floor Mounted, Rear Discharge			X

* Maximum Performance (MaP) testing performed by Veritec Consulting, Inc.

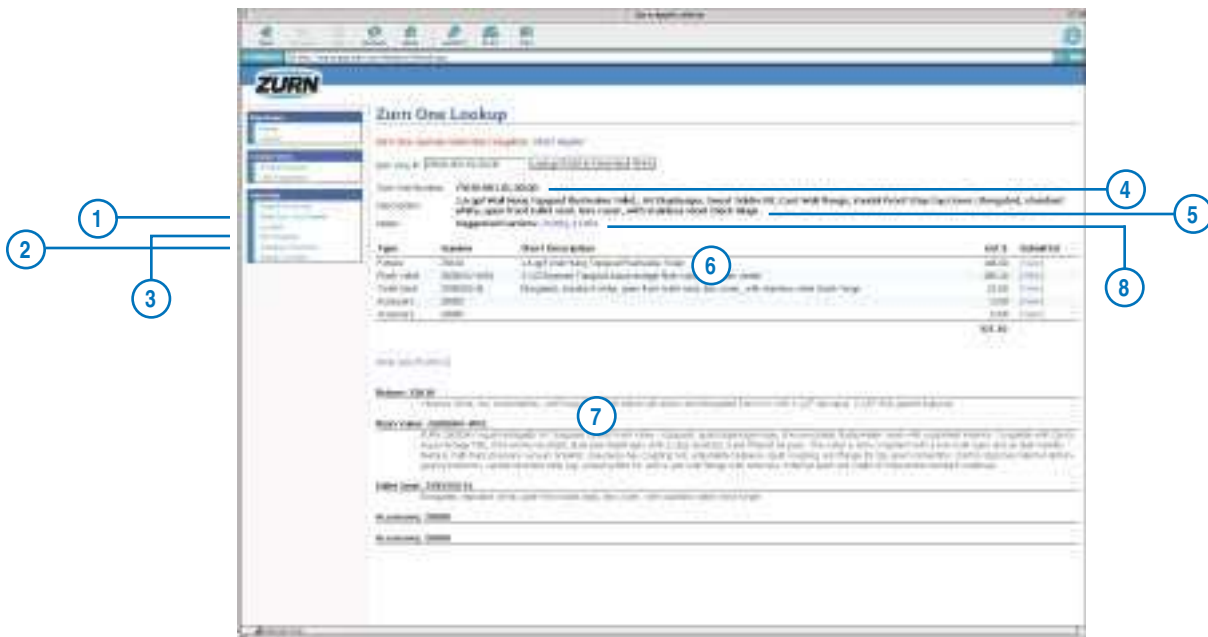
◆ HET (High Efficiency Toilet) – HET is defined as a fixture that flushes at 20 percent below the 1.6 gpf [6.0 lpf] per flush maximum or better, equating to a maximum of 1.28 gpf [4.8 lpf].

Zurn One® Configurator

Using The Configurator For Custom Applications

Zurn One Fixture Systems can be easily configured. A custom-designed computer modeling program allows the user to mix and match components depending on need and performance requirements. The specifier can register online at www.zurn.com for access authorization. The program enables the user to configure the fixture and brass components for specific design applications.

- ① **Build Zurn One System**
Ability to configure and specify multiple Zurn fixture and brass components.
- ② **Company Favorites**
Real-time intercompany networking providing all associates access to company master specifications and ongoing projects.
- ③ **My Favorites**
Job folder saving capability.
- ④ **Zurn One Number**
One model number for a complete system.
- ⑤ **Description**
Complete system specification.
- ⑥ **Fixture and Trim Schedule**
P-Number breakdown.
- ⑦ **Specification**
Complete “category” specification.
- ⑧ **Suggested Carrier**
Appropriate carrier for fixture application with link to carrier system data.



Typical Water Conservation

Zurn offers a value alternative to traditional fixture installations that utilize multiple manufacturers' components. Zurn EcoVantage fixture systems combine the strength of commercial brass fittings along with an innovative offering of sanitary fixtures. Zurn has a 100-year tradition of developing highly engineered water control products. The Zurn difference fills the void between a manufacturer that simply makes commercial plumbing products and one that is focused on commercial plumbing products solutions. The Zurn EcoVantage product offering brings value and performance together to deliver sustained savings for the building owner.

Typical Water Conservation – Industrial and Commercial Application

The table below provides an illustrative example of a typical office building setting with 100 occupants – 50 males and 50 females in a 260-day work year. The baseline calculation uses the EPA Act of 1992 for the gallons per flush/gallons per minute consumption.

Fixture	Frequency of Use ⁴	Flow Rate		Water Consumption (Total Gallons)		
		EPA Act ² (LEED Baseline ³)	Zurn EcoVantage Low Flow System	EPA Act ² (LEED Baseline ³)	Zurn EcoVantage Low Flow System	
					Use	Savings
Water Closet - Male	1	1.6 gpf	1.28 gpf	80	64	16
Urinal - Male	2	1.0 gpf	0.125 gpf	100	12.5	87.5
Water Closet - Female	3	1.6 gpf	1.28 gpf	240	192	48
Lavatory Faucets	3 Minutes	2.2 gpm	0.5 gpm	660	150	510
Kitchen Faucets	1 Minute	2.2 gpm	1.5 gpm	220	150	70
Showers	5.3 Minutes	2.5 gpm	1.5 gpm	331.25	198.75	132.5
Daily Total				1,631.25	767.25	864
Yearly Total ¹				424,125	199,485	224,640
Zurn EcoVantage Water Savings (Total Savings Over Baseline Criteria)						52.97%

¹ Based on 100 occupants: 50 male, 50 female; estimating 25 persons showering daily with an annual 260 work days.

² EPA Act, 1992.

³ LEED Baseline for Water Efficiency is the EPA Act or the local building code/criteria, whichever criteria is more stringent.

⁴ Frequency of Use - Source, Water Use and Conservation, Waterplow Press 1992 by Amy Vickers.

[Check our website – www.zurn.com](http://www.zurn.com) – for an interactive water savings calculator.

For assistance with your next LEED/water conservation project, look to Zurn for design assistance.

We can help deliver innovative solutions outside of the standard LEED criteria.

Contact us at 1-800/997-3876 or e-mail us at ZurnOne@zurn.com.



Water Savings · High Performance · Reduced Costs

Zurn has a 100-year tradition of developing quality engineered products to meet the growing needs of water conservation, water safety, water control, and water comfort. The Zurn difference fills the void between a manufacturer that simply produces commercial plumbing products and one that is focused on system solutions. Zurn Engineered Water Solutions™ provides a systems approach for the building owner and specifier that promotes value and performance to deliver sustained savings.

Water Control



Water Conservation



Water Comfort



Water Safety



ZURN INDUSTRIES, LLC
1801 PITTSBURGH AVENUE
ERIE, PA U.S.A 16502
PHONE: 814-455-0921
FAX: 814-875-1402
www.zurn.com

ZURN INDUSTRIES LIMITED
3544 NASHUA DRIVE
MISSISSAUGA, ONTARIO L4V 1L2
PHONE 905/405-8272
FAX: 905/405-1292

Form No. CBF14, Rev. 9/07