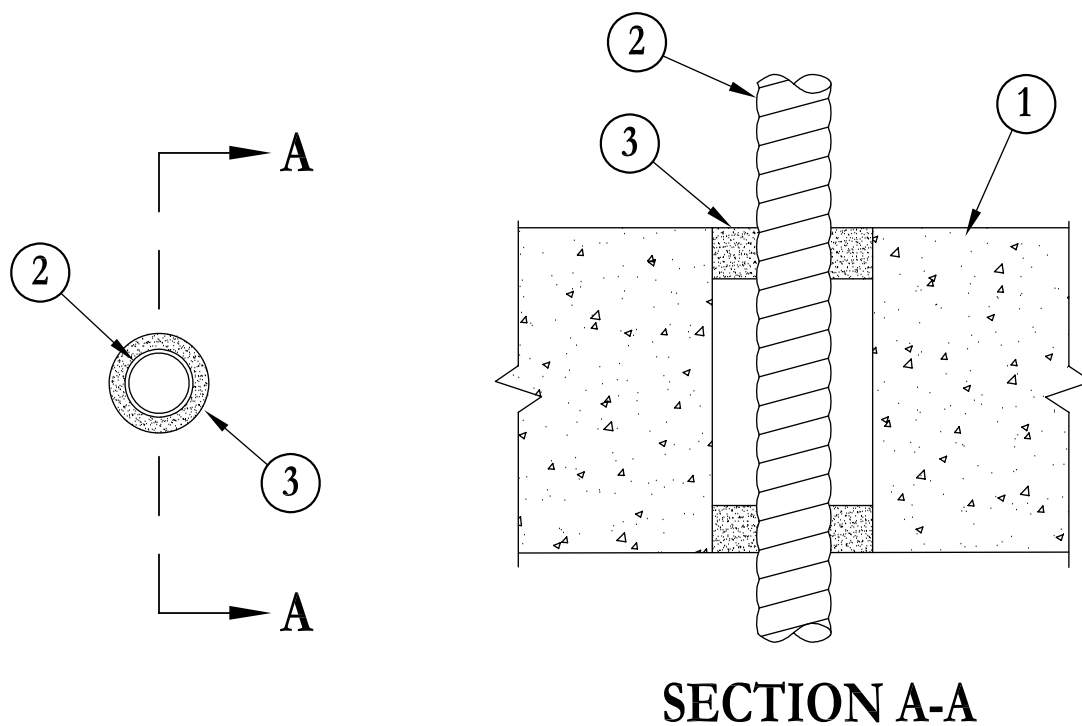


## System No. F-B-3005

May 18, 2005

F Rating – 1 Hr

T Rating – 0 Hr



1. **Floor or Wall Assembly** – Min 6 in. (152 mm) thick reinforced lightweight or normal weight (100-150 pcf or 1600-2400 kg/m<sup>3</sup>) concrete. Floor may also be constructed of any min 6 in. (152 mm) thick UL Classified hollow-core **Precast Concrete Units**\*. Max diam of opening is 2 in. (51 mm).  
See **Precast Concrete Units** (CFTV) category in the Fire Resistance Directory for names of manufacturers.
2. **Metal-Clad Cable**\*\* – Max one nom 1/2 in. (13 mm) diameter (or smaller) steel or aluminum metal clad cable.
3. **Fill, Void or Cavity Materials**\* – **Caulk** – Min 1-1/4 in. (6 mm) thickness of fill material applied within the annulus, flush with bottom surface of floor. Min 1/2 in. (13 mm) thickness of fill material applied within the annulus, flush with top surface of floor.

**3M COMPANY** – CP 25WB+ or IC 15WB+ caulk

++Bearing the UL Listing Mark

\*Bearing the UL Classification Marking

Through Penetrations

Cables

3000 Series

Concrete

FB

This material was extracted and drawn by 3M Fire Protection Products from the 2007 edition of the UL Fire Resistance Directory. cULus