

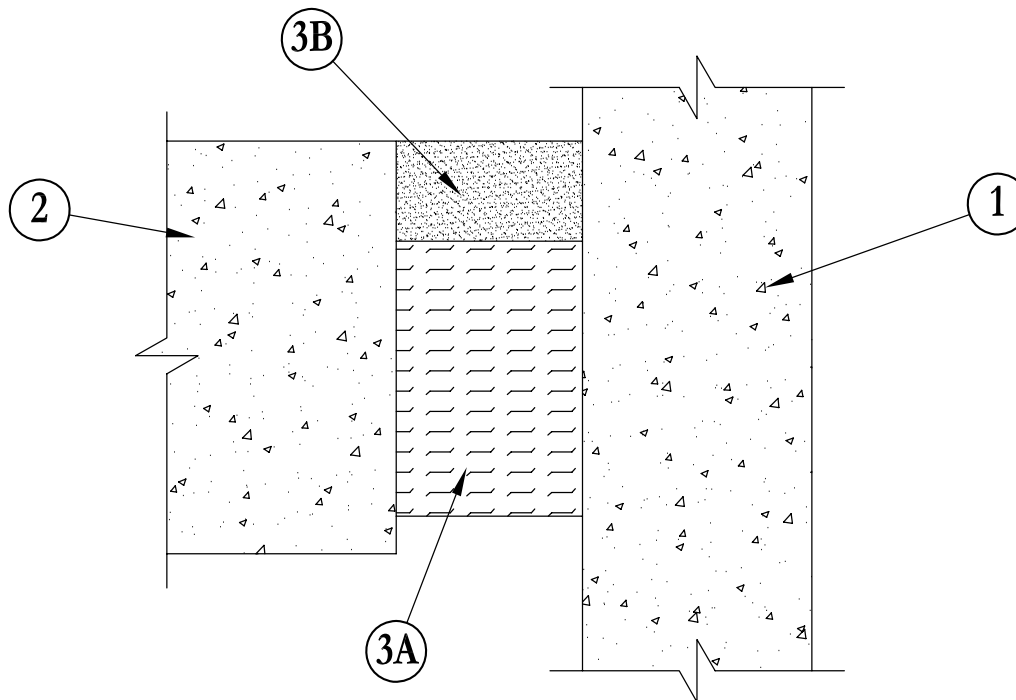
System No. FW-D-1003

December 04, 2000

Assembly Rating – 2 Hr

Nominal Joint Width – 4 In.

Class II Movement Capabilities – 25% Compression or Extension



1. **Wall Assembly** – Min 4-1/2 in. thick reinforced lightweight or normal weight (100-150 pcf) structural concrete. Wall may also be constructed of any UL Classified **Concrete Blocks***.
See **Concrete Blocks (CAZT)** category in the Fire Resistance Directory for names of manufacturers.
2. **Floor Assembly** – Min 4-1/2 in. thick steel-reinforced lightweight or normal weight (100-150 pcf) structural concrete.
3. **Joint System** – Max width of joint (at time of installation of joint system) is 4 in. The joint system is designed to accommodate a max 25 percent compression or extension from its installed width. The joint system shall consist of the following:
 - A. **Forming Material*** – Min 4.0 pcf mineral wool batt insulation installed in joint opening as a permanent form. Pieces of batt cut to min width of 4 in. and installed edge-first into joint opening, parallel with joint direction, such that batt sections are compressed min 50 percent in thickness and such that the compressed batt sections are recessed from top surface of floor to accommodate the required thickness of fill material. Adjoining lengths of batt to be tightly-butted with butted seams spaced min 12 in. apart along the length of the joint.

FIBREX INSULATION INC – FBX Safing Insulation
OWENS CORNING HT INC, DIV OF OWENS CORNING – Safing Insulation/MW
ROCK WOOL MANUFACTURING CO – Delta Board
ROXUL INC – Type SAF
THERMAFIBER L L C – Type SAF
 - B. **Fill, Void or Cavity Material*** – Min 1/4 in. thickness of fill material applied within the joint, flush with top surface of floor
3M COMPANY – FB-2000

*Bearing the UL Classification Mark

This material was extracted and drawn by 3M Fire Protection Products from the 2007 edition of the UL Fire Resistance Directory. cULus