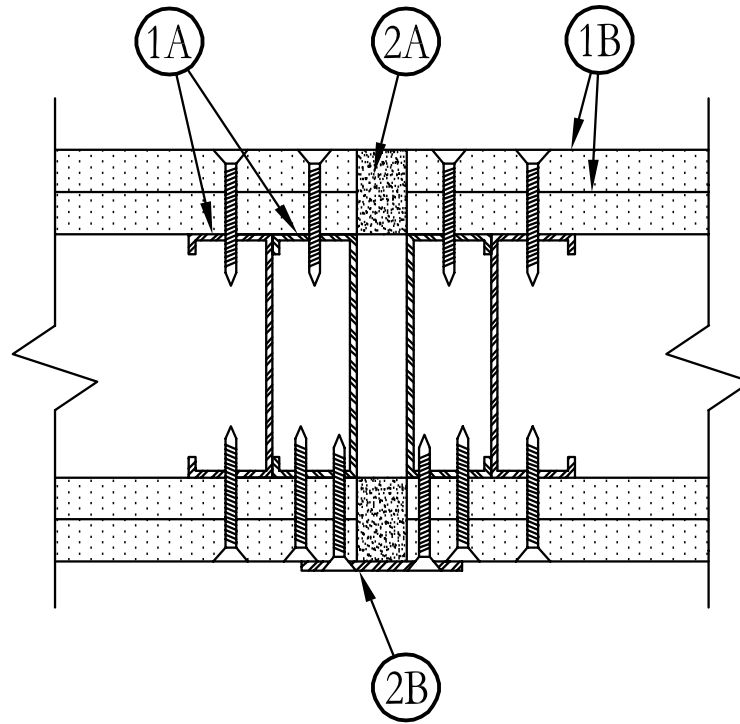


System No. WW-S-0032

January 16, 1998
 Assembly Rating – 2 Hr
 Joint Width – 1-1/2 in. Max



1. **Wall Assembly** – Nonbearing 2 hr fire rated gypsum wallboard/stud assembly constructed of the materials and in the manner described in the individual U400-Series Wall or Partition Design in the UL Fire Resistance Directory, including the following construction features:
 - A. **Studs** – Min 3-5/8 in. wide by 1-1/4 in. deep corrosion protected min 25 MSG Steel channels. Steel stud spacing not to exceed 24 in. OC.
 - B. **Gypsum Board*** – Two layers 5/8 in. thick gypsum wallboard, as specified in the individual U400-Series Design.
2. **Joint System** – Max width of joint is 1-1/2 in. The joint system shall consist of the following:
 - A. **Fill, Void or Cavity Material*** – Min 1-1/4 in. thickness of fill material applied within the joint, flush with each surface of wall.
3M COMPANY – FB-2000 or FB-2000+
 - B. **Steel Cover Plate** – Min 28 gauge galv steel cover plate sized to overlap wall a min of 2 in. on both sides of opening. Plate attached to either one side or both sides of wall and shall be continuous for the entire height of opening.

*Bearing the UL Classification Marking