

# Access Tile<sup>®</sup>

## Tactile Systems

the power of intelligent design  
and precision engineering™

exceptional value  
replaceability  
installs in minutes  
superior performance

[www.accesstile.com](http://www.accesstile.com) 888-679-4022

Access Products Inc.  
[www.accessproducts.com](http://www.accessproducts.com)





# Introducing the **ultimate solution™** in detectable warning systems.

With 20 years of leading research insights and progressive product development experience, Access Products Inc. has combined proven polymer processing and material technologies with innovative and intelligent design features to create the ultimate in detectable warning tiles.

Maximized efficiencies in manufacturing, materials sourcing and product specifications deliver the most cost-effective solution in the industry.

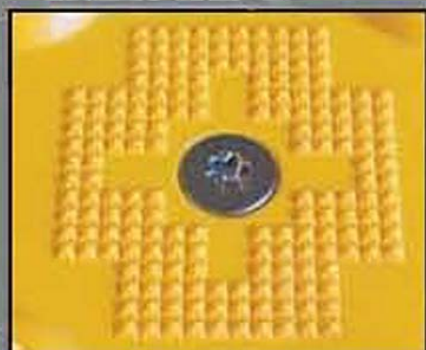


the power of intelligent design  
and precision engineering™



# intelligent design™

the genesis of 20 years of innovation



Tamper-proof, counter-sunk, stainless steel fastener sets flush with tile surface and provides for future replaceability.



High density, diamond grip™ pyramid micro texture designed for exceptional slip resistance in wet and dry conditions.



Nylon composite, corrosion resistant anchor and stainless steel fastener provide unlimited re-installation due to self-threading design.



Tile geometry allows for consistent dome spacing to be maintained between adjoining Cast in Place Replaceable and Surface Applied tiles.



Hexagonal molded forms for permanent interface between tile and anchor system. Fastener/anchor system comes pre-assembled.



Strategically placed reinforcing internal ribs determined by Finite Element Analysis (FEA) generates enhanced stiffness and structural support.



SURFACE APPLIED TILE

Pre-formed fastener locations enable error-free installation. Color-matched Tek™ Anchor with stainless steel fastener is supplied with tile.



Reinforced top and bottom flange determined by Finite Element Analysis (FEA) generates enhanced stiffness and structural support.



SURFACE APPLIED TILE

Perimeter of tile is bevelled to meet ADA requirements for surface height transition.



Open end design eliminates air entrapment during installation to ensure full interface with concrete substructure.



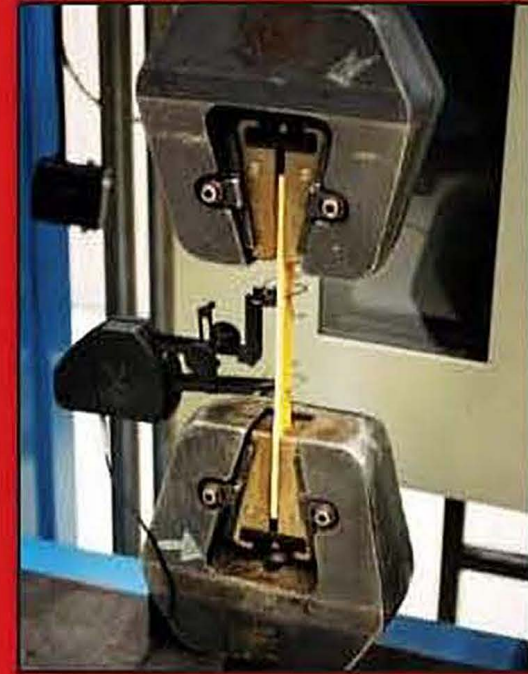
# proven performance

the rigor of unparalleled testing procedures



#### Accelerated Aging, Freeze-Thaw Chamber

Extreme heat and freezing cycles test structural integrity in all climates while integral loading cylinders stress tile throughout temperature cycles to validate durability.



#### Tensile Strength, ASTM D638

Engineering analysis calculates required strengths when exposed to externally applied forces, such as foot traffic and moving vehicles.



#### Taber Abrasion, ASTM C501

Measures the wear resistance of tile to ensure years of maintenance-free service.



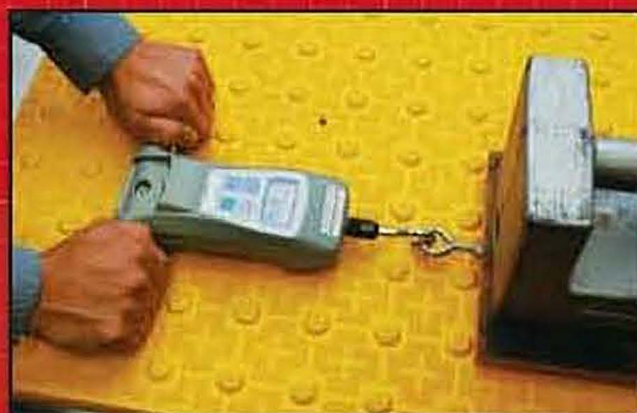
#### Gardner Abrasion, ASTM D2496

Additional wear test standard to ensure durability in high foot traffic areas.



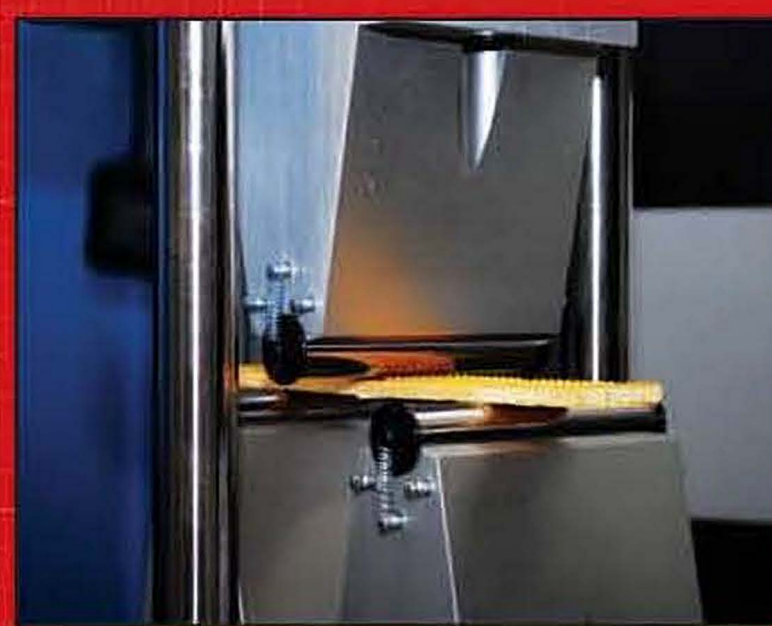
#### Compressive Strength, ASTM D695

Measures compressive strength to meet AASHTO standards developed to determine resistance of vehicular loading.



#### Slip Resistance, ASTM C1028

Measures slip resistance to meet ADA and OSHA standards in both wet and dry conditions.



#### Flexural Strength, ASTM D695

Measures flexural properties of material required to analyze the strength necessary to resist repetitive applied forces.

Accredited testing laboratories and standards have been used in the development of our state-of-the-art tiles. ASTM International, Underwriters Laboratories Inc., Intertek, Q-Lab, Bodyscote Testing Group.



# Access Tile®

## YOUR ANSWER TO ACCESSIBILITY STANDARDS

Access Tile is the result of responding to a market demand for a better solution to detectable warning tiles at a cost-effective price. With over 20 years of proven manufacturing experience in detectable warnings, Access Tile's improved design features will exceed industry expectations from specifier to installer.

## ADA, ADAAG, USDOT, FHWA, CALTRANS TITLE 24 COMPLIANT

Complies with Federal and State requirements

- ADA [www.access-board.gov](http://www.access-board.gov)
- ADAAG [www.fhwa.dot.gov](http://www.fhwa.dot.gov)
- CALTRANS compliant per a88a specification  
[www.dot.ca.gov/hq/opd/access/access.htm](http://www.dot.ca.gov/hq/opd/access/access.htm)
- USDOT [www.dot.gov](http://www.dot.gov)
- FHWA [www.fhwa.dot.gov](http://www.fhwa.dot.gov)

For full industry standards visit: [www.accesstile.com/standards](http://www.accesstile.com/standards)

## THE NEW INDUSTRY STANDARD

Intelligently designed and precision engineered products that surpass industry and regulated standards in all areas:

- Durability and all-weather resilience
- Structural integrity and UV stability
- Slip resistance
- Cost-effective installation and maintenance
- Speed and ease of installation and replacement

Proud members of:



New innovations from Access Products:

**ecoglo®**  
VISIBLY BETTER

[www.ecoglo.us](http://www.ecoglo.us)

**TRIPSTOP®**  
Articulating Sidewalk Joint System

[www.tripstop.us](http://www.tripstop.us)



Access Tile is designed,  
tested, and manufactured  
in the **U.S.A.**

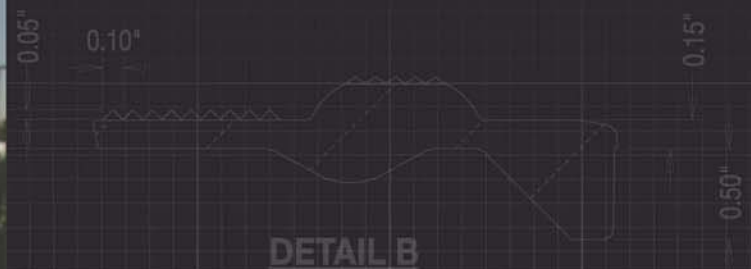
## Engineered for Performance. Designed for the Environment.

Our product has been designed and developed with the Earth in mind. The ingenuity of its unique features and the power of its simple installation means less harm to the environment.

- recyclable and replaceable material
- lighter weight tile construction reduces impact of shipping
- high efficiency manufacturing operation requires reduced energy consumption
- no concrete demolition necessary for replacements significantly reducing harmful emissions
- highest industry durability extends product life and reduces the number of future replacements

As a member of the U.S. Green Building Council, we take responsibility for developing products that help our customers work towards LEEDS certification.





Installs in minutes during concrete finishing stage. Preferred by professional contractors who demand quality installations every time.

***Engineered for ultimate performance and optimal cost-effectiveness.***



Wide in-line dome configuration facilitates a smooth rolling transition for strollers, wheelchairs and walkers meeting federal and state standards.



High density, diamond grip™ pyramid micro texture designed for exceptional slip resistance in wet and dry conditions.



**Access Tile®**

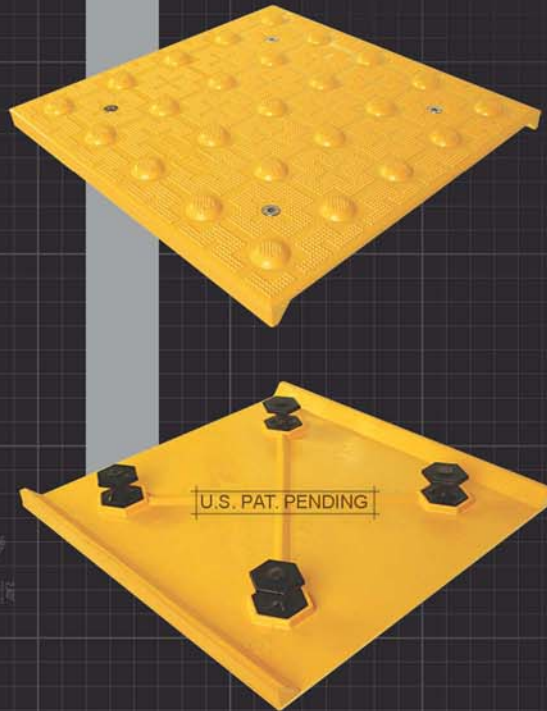


# intelligent design™

## cast in place replaceable

### the ultimate in tactile design

Twenty years of tactile design, testing and manufacturing insights have gone into Access Tile's superior engineered detectable warning product. Access Tile boasts the easiest and fastest installation in the industry requiring no concrete demolition and needing only a single fastening device. The replaceability feature of the tile is industry leading due to its simplicity and speed.



#### ADA COMPLIANCE

[www.accesstile.com/ada-compliance](http://www.accesstile.com/ada-compliance)

- 2.35" center-to-center, in-line dome spacing meets ADA Federal and State requirements
- Truncated dome size and spacing compliant with ADA Federal and State requirements, 0.9" base and 0.45" top diameter
- Fully complies with all ADA and OSHA requirements for surface height transitions to eliminate trip hazards
- Consistent dome spacing when tiles are adjoined (side-by-side or end-to-end)
- Wide in-line dome configuration facilitates a smooth rolling transition for strollers, wheelchairs and walkers

#### ASTM & UL TESTING

[www.accesstile.com/specifications](http://www.accesstile.com/specifications)

- Tensile Strength ASTM D 638
- Flexural Strength ASTM D 790
- Compressive Strength ASTM D 695
- Accelerated Weathering ASTM G 155
- Slip Resistance ASTM C 1028
- Flame Spread Index ASTM E 84
- Accelerated Aging (freeze thaw) D1037
- Linear Thermal Expansion ASTM D 696-03
- Tile Bond Strength ASTM C 1583

#### INTELLIGENT DESIGN FEATURES

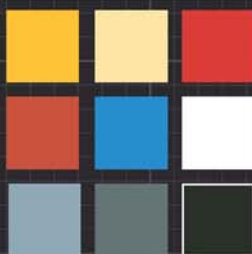
- Installs in minutes during concrete finishing stage
- The replaceability feature of the tile is industry leading due to its simplicity and speed
- Tamper-proof, stainless steel fastener maintains flush interface with walking surface
- Corrosion resistant hexagonal anchors designed to entrap concrete for optimal anchoring
- Anchor and fastener material compositions allow for reliable and secure installations when multiple replacements are necessary
- Large interface between tile and anchor seat area maximizes support at each fastener location
- Multiple fastener locations to ensure full anchoring of tactile surface
- Integral structural spine ensures stiffness and strength
- Tiles shipped with removable protective plastic film to provide a clean surface after installation
- Interactive sizes – all tiles maintain pattern repeat when mounted side-to-side or top-to-bottom

#### PRODUCT SIZES\*



15' RADIUS  
CURVE

#### STANDARD COLORS\*



\* OTHER CUSTOM SIZES AND COLORS MAY BE AVAILABLE

[www.accesstile.com](http://www.accesstile.com)

888-679-4022

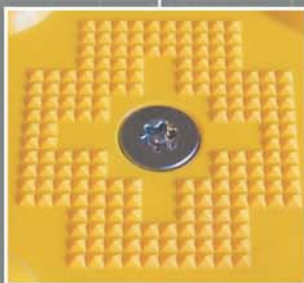
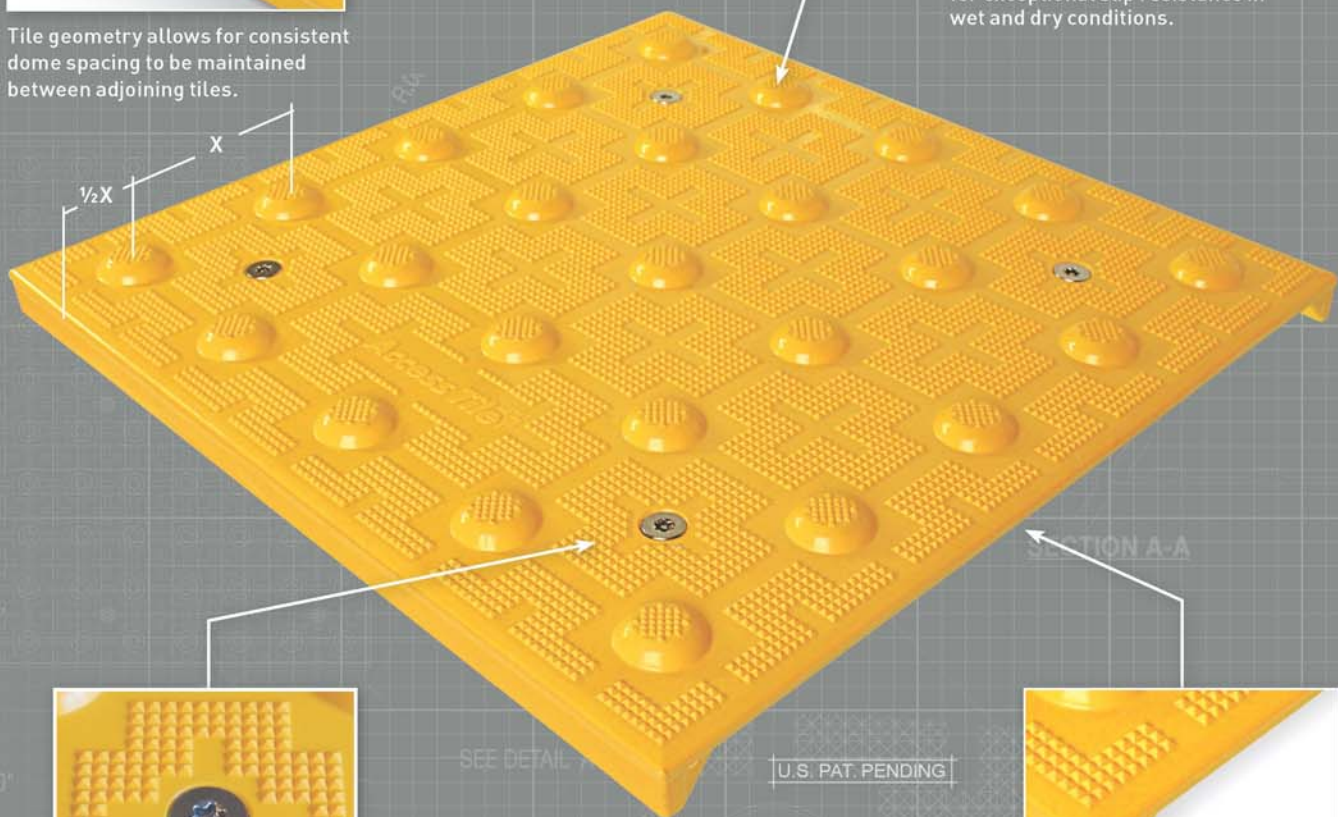




Tile geometry allows for consistent dome spacing to be maintained between adjoining tiles.



High density, diamond grip™ pyramid micro texture designed for exceptional slip resistance in wet and dry conditions.



Tamper-proof, countersunk, stainless steel fastener sets flush with tile surface and provides for future replaceability.



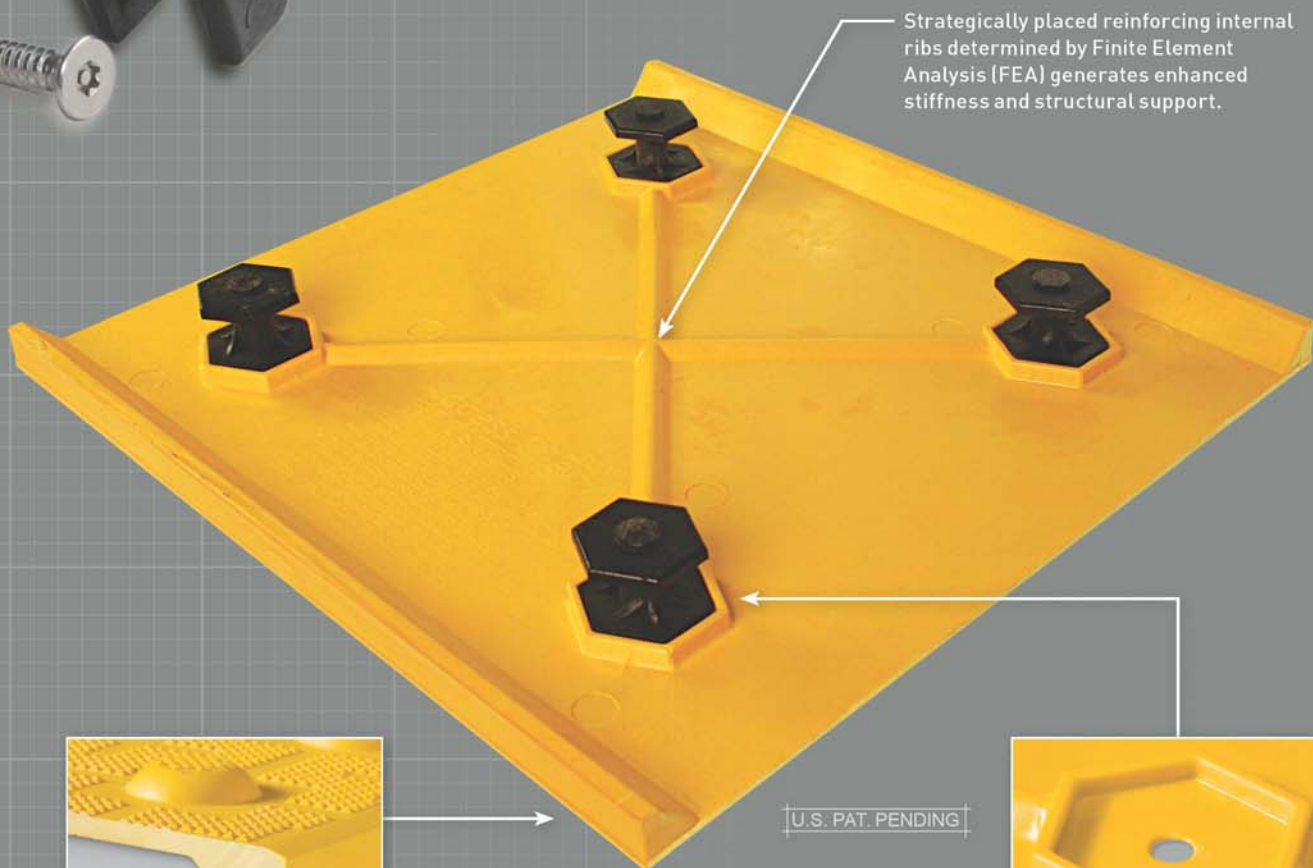
Open end design eliminates air entrapment during installation to ensure full interface with concrete substructure.



# intelligent design™ cast in place replaceable ADA compliant dome geometry



Nylon composite, corrosion resistant anchor and stainless steel fastener provide unlimited re-installation due to self-threading design.



Reinforced top and bottom flange determined by Finite Element Analysis (FEA) generates enhanced stiffness and structural support.



Hexagonal molded forms for permanent interface between tile and anchor system. Fastener/anchor system comes pre-assembled.

easy to install, easy to replace  
designed for more environmentally-conscious  
installation and replacement

[www.accesstile.com](http://www.accesstile.com)

888-679-4022



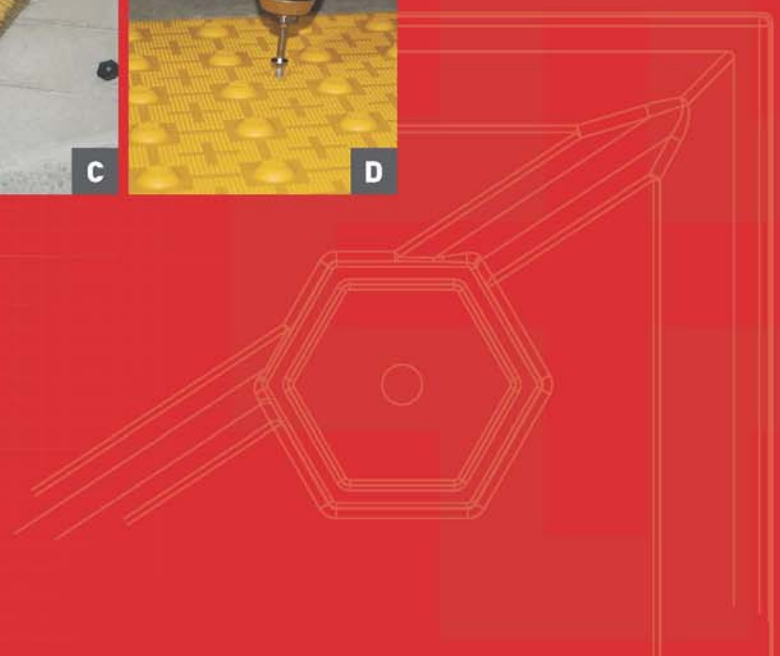
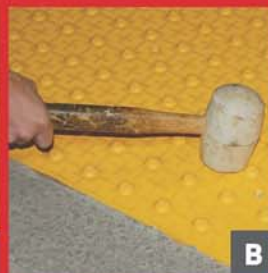
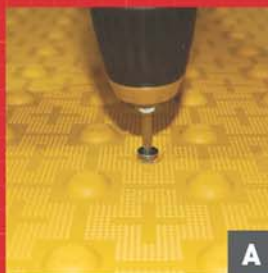
# INSTALLATION

- 1 Maintaining a 4-7 slump range, pour and float the concrete.
- 2 Without removing any concrete, place the tile on the curb ramp 6"-8" from the curb line (face of curb).
- 3 Tamp the tile in grid pattern across the top face, embedding the tile into the concrete using a non-marring rubber mallet.
- 4 Create an 1/4" concrete free edge around the perimeter of the tile using a 3/8" radius edging tool then float the concrete around the tile's perimeter using a steel trowel.
- 5 Apply a broom-finish to the curb ramp.
- 6 After the concrete has substantially cured, remove the protective plastic wrap by cutting the plastic with a sharp knife tight to the concrete/tile interface.



# REPLACEMENT

- A Unscrew T27 tamper-proof fasteners.
- B Tap perimeter of tile with a rubber mallet to remove bond of tile to concrete.
- C Use a pry bar to pry up edge. Remove all debris from vacant cavity mold. Vacuum/sweep all crevices.
- D Insert replacement tile, gently apply pressure to seat tile in recess. Reinsert tamper-proof fasteners in hex shape concrete anchors.



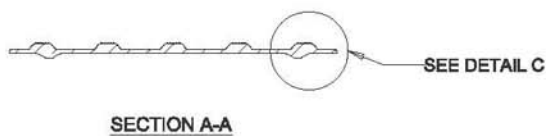
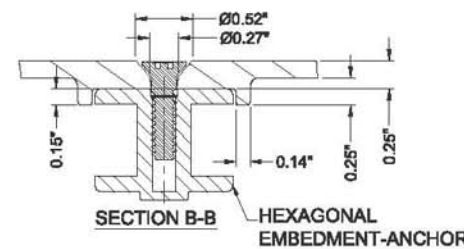
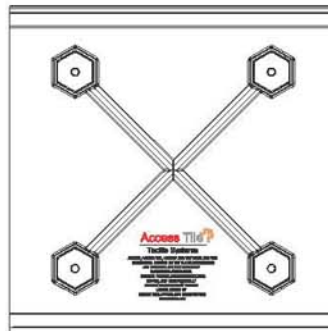
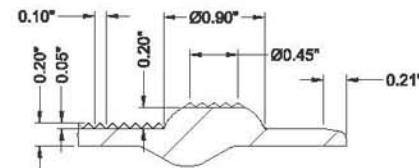
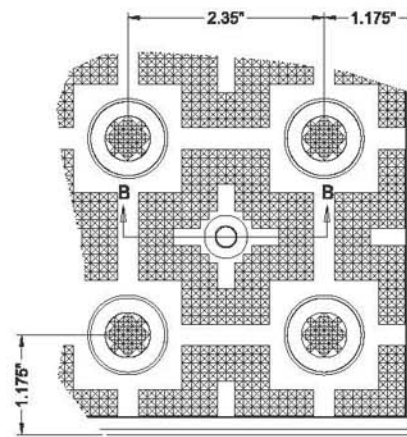
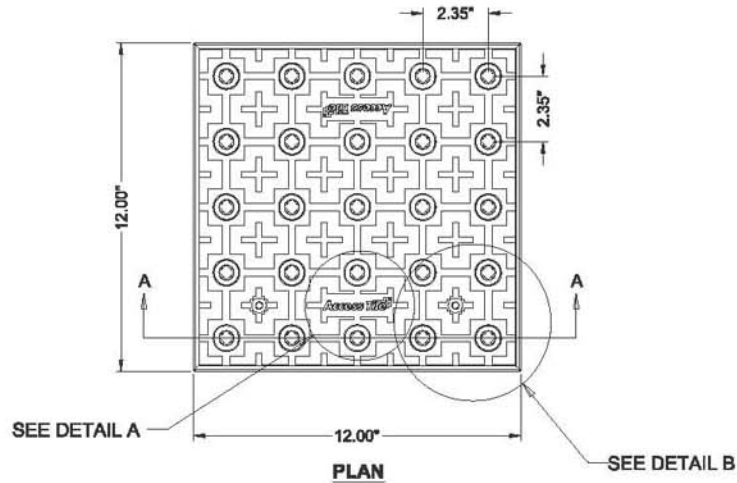


1' x 1'

# REPLACEABLE CAST IN PLACE 2.35" DOME SPACING

AccessTile

www.accesstile.com 888-679-4022



www.AccessTile.com

Access Products Inc.

© Access Products Inc.  
ACCESS, ACCESS TILE, ACCESS + AND THE  
TWO AND THREE DIMENSIONAL DESIGNS  
ON THE DOMES ARE TRADEMARKS OF  
ENGINEERED SYSTEMS INC.  
PATENTS PENDING IN THE USA, CANADA  
AND INTERNATIONALLY. MANUFACTURED  
AND DISTRIBUTED BY  
ACCESS WORLD PRODUCTS INC.  
www.accesstile.com

© KENNETH E. SZEKELY

## MATERIAL LIST

ITEM	DESCRIPTION	PART NO.	QTY
1	ACCESS TILE	ACC-R-1X1	1
2	ANCHOR ASSEMBLY	ACC-R-ANCH	4

NOTE: ANCHOR ARE INCLUDED AND ASSEMBLED  
ON TILE.

## REFERENCE DRAWINGS

DWG. NO.	DESCRIPTION

No.	DATE	REVISION	APPR.
-----	------	----------	-------

SCALE  
1"=1'-0" U.S. & C.  
FULL SIZE ONLY

DESIGNED	KES	DATE	10/08/2008
DRAWN	RWD	DATE	10/15/2008
DRAWN	KES		

PROJECT MANAGER

TRADE	DETECTABLE WARNING SURFACE	PART NO.	ACC-R-1X1
-------	----------------------------	----------	-----------

MATERIAL

POLYMER COMPOSITE

SUBJECT  
**ACCESS TILE®**  
TRUNCATED DOME, DETECTABLE  
WARNING TACTILE SURFACE

PROJECT  
**ACCESS TILE®**  
TRUNCATED DOME, DETECTABLE  
WARNING TACTILE SURFACE  
1X1 REPLACEABLE CAST IN PLACE  
INLINE DOME TILE DRAWING.

DRAWING NO.	ACC-R-1X1	REV. NO.	0
-------------	-----------	----------	---

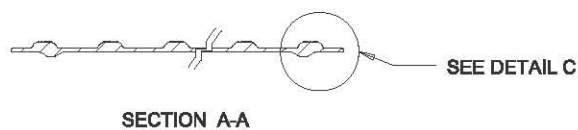
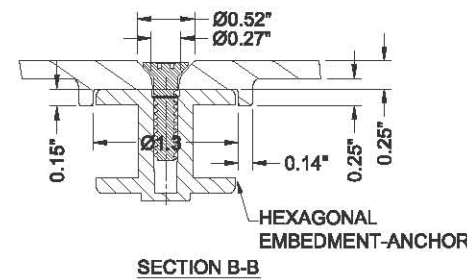
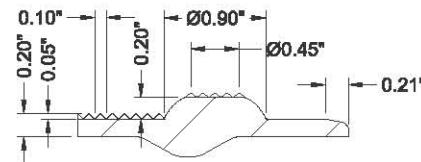
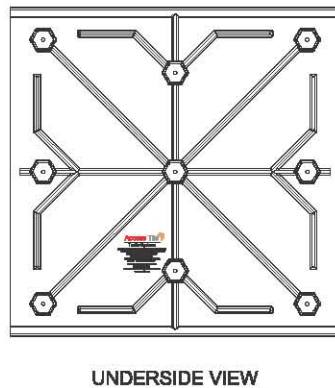
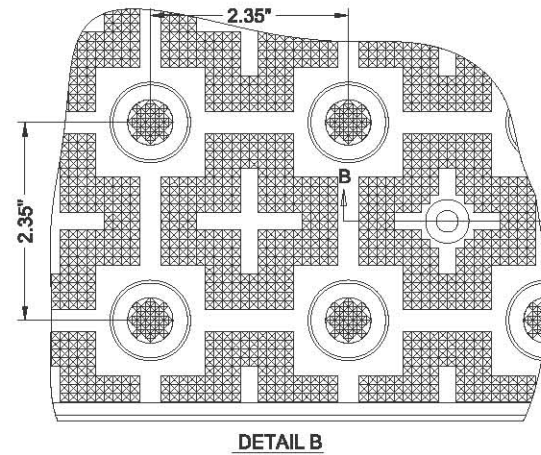
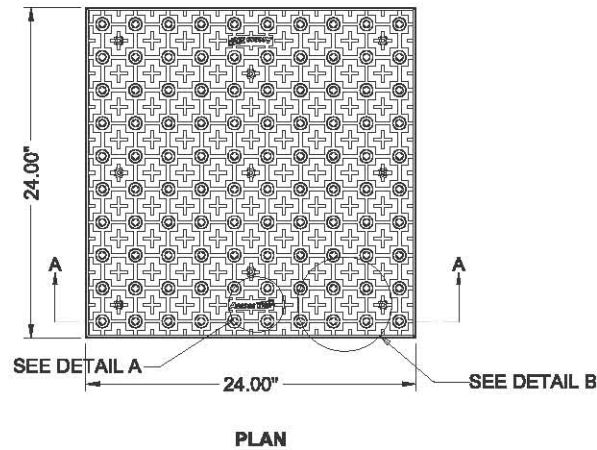


# 2' x 2'

## REPLACEABLE CAST IN PLACE 2.35" DOME SPACING

**Access Tile**

www.accesstile.com 888-679-4022



www.AccessTile.com

Access Products Inc.

© Access Products Inc.  
ACCESS, ACCESS TILE, ACCESS + AND THE  
TWO AND THREE DIMENSIONAL DESIGNS  
ON THE DOMES ARE TRADEMARKS OF  
ENGINEERED SYSTEMS INC.  
PATENTS PENDING IN THE USA, CANADA  
AND INTERNATIONALLY. MANUFACTURED  
AND DISTRIBUTED BY  
ACCESS WORLD PRODUCTS INC.  
www.accesstile.com

© KENNETH E. SZEKELY

### MATERIAL LIST

ITEM	DESCRIPTION	PART NO.	QTY
1	ACCESS TILE	ACC-R-2X2	1
2	ANCHOR ASSEMBLY	ACC-R-ANCH	9

**NOTE: ANCHOR ARE INCLUDED AND ASSEMBLED  
ON TILE.**

### REFERENCE DRAWINGS

DWS. NO.	DESCRIPTION

No.	DATE	REVISION	APPR.

SCALE  
1"=1'-0" U.S.A.  
FULL SIZE ONLY

DESIGNED	KES	DATE	10/09/2008
DRAWN	RWD		10/15/2008
DRAWN	KES		

PROJECT MANAGER

TRADE  
DETECTABLE WARNING SURFACE

MATERIAL  
POLYMER COMPOSITE

SUBJECT  
**ACCESS TILE**

TRUNCATED DOME, DETECTABLE  
WARNING TACTILE SURFACE

PROJECT  
**ACCESS TILE**

TRUNCATED DOME, DETECTABLE  
WARNING TACTILE SURFACE  
2X2 REPLACEABLE CAST IN PLACE  
INLINE DOME TILE DRAWING.

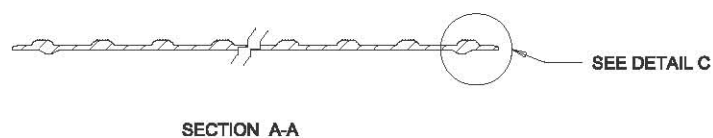
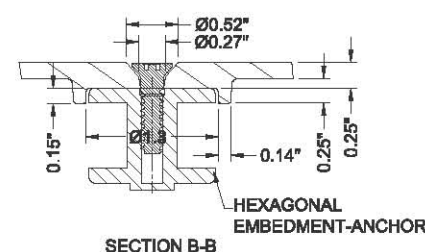
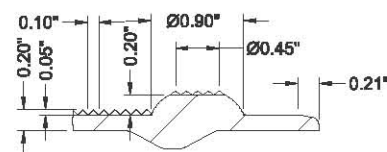
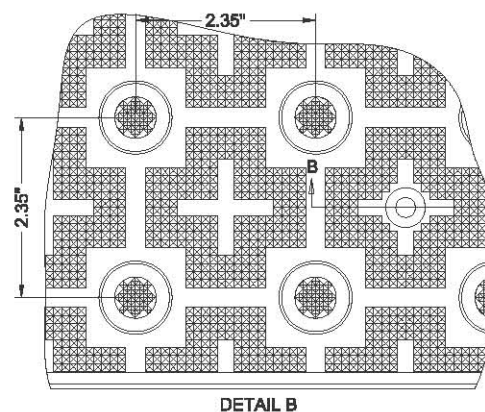
DRAWING NO.  
ACC-R-2X2

REV. NO.  
0



## REPLACEABLE CAST IN PLACE

www.accesstile.com 888-679-4022



Access Products Inc

© Access Products Inc.  
ACCESS, ACCESS TILE, ACCESS + AND THE  
TWO AND THREE DIMENSIONAL DESIGNS  
ON THE DOMES ARE TRADEMARKS OF  
ENGINEERED SYSTEMS INC.  
PATENTS PENDING IN THE USA, CANADA  
AND INTERNATIONALLY. MANUFACTURED  
AND DISTRIBUTED BY  
ACCESS WORLD PRODUCTS INC.  
[www.accessstile.com](http://www.accessstile.com)

© KENNETH E. SZEKELY

## MATERIAL LIST

ITEM	DESCRIPTION	PART NO.	QTY
1	ACCESS TILE	ACC-R-2X3	1
2	ANCHOR ASSEMBLY	ACC-R-ANCH	12

NOTE: ANCHOR ARE INCLUDED AND ASSEMBLED ON TILE.

#### REFERENCE DRAWINGS

DWG. NO.	DESCRIPTION

No.	DATE	REVISION	APPR
-----	------	----------	------

SCALE  
1"=1'-0" U.N.D.  
FULL SIZE ONLY



DESIGNED	KES	DATE	10/09/2008
DRAWN	RWO		10/15/2008
DRAWN	KES		

PROJECT MANAGER
-----------------

TRADE DETECTABLE WARNING SURFACE	PART NO. ACC-R-2X3
-------------------------------------	-----------------------

MATERIAL	POLYMER COMPOSITE
----------	-------------------

SUBJECT ACCESS FILE®

TRUNCATED DOME, DETECTABLE  
WARNING TACTILE SURFACE

PROJECT **ACCESS TILE®**  
TRUNCATED DOME, DETECTABLE  
WARNING TACTILE SURFACE  
2X3 REPLACEABLE CAST IN PLACE  
INLINE DOME TILE DRAWING.

DRAWING NO.	REV. NO.
ACC-R-2X3	0



# 2' x 4'

## REPLACEABLE CAST IN PLACE 2.35" DOME SPACING

**Access Tile**

www.accesstile.com 888-679-4022

www.AccessTile.com

Access Products Inc

© Access Products Inc.  
ACCESS, ACCESS TILE, ACCESS + AND THE  
TWO AND THREE DIMENSIONAL DESIGNS  
ON THE DOMES ARE TRADEMARKS OF  
ENGINEERED SYSTEMS INC.  
PATENTS PENDING IN THE USA, CANADA  
AND INTERNATIONALLY. MANUFACTURED  
AND DISTRIBUTED BY  
ACCESS WORLD PRODUCTS INC.  
www.accesstile.com  
© KENNETH E. SZEKELY

### MATERIAL LIST

ITEM	DESCRIPTION	PART NO.	QTY
1	ACCESS TILE	ACC-R-2X4	1
2	ANCHOR ASSEMBLY	ACC-R-ANCH	13

NOTE: ANCHORS ARE INCLUDED AND ASSEMBLED  
ON TILE.

### REFERENCE DRAWINGS

DWG. NO.	DESCRIPTION

NO.	DATE	REVISION	APPR.
-----	------	----------	-------

SCALE  
1"=1'-0" UNLESS  
FULL SIZE ONLY

DESIGNED	KES	DATE	10/09/2008
DRAWN	RWD		10/13/2008
CHECKED	KES		

PROJECT MANAGER

TRADE  
DETECTABLE WARNING SURFACE

MATERIAL: POLYMER COMPOSITE

SUBJECT: **ACCESS TILE®**

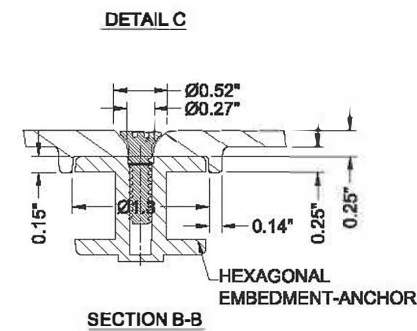
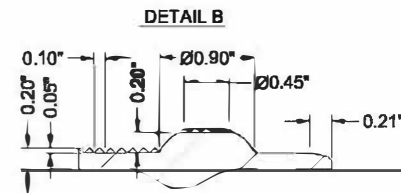
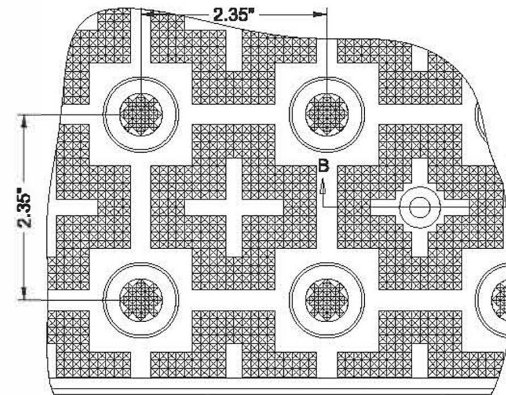
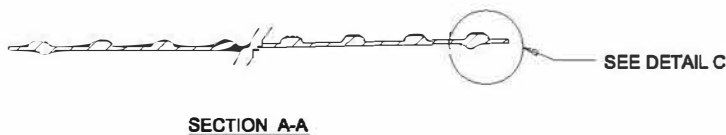
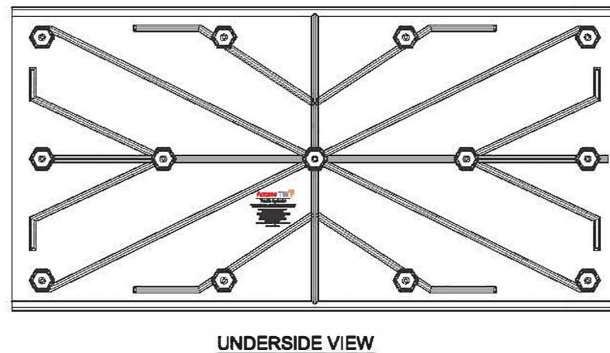
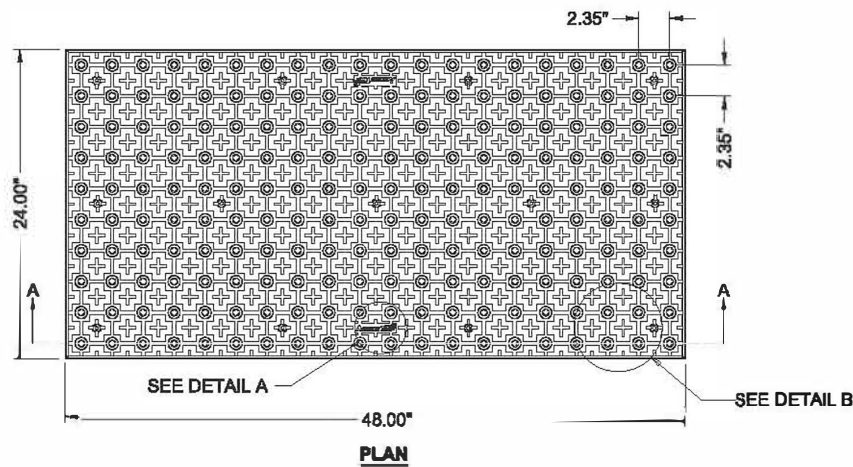
TRUNCATED DOME, DETECTABLE  
WARNING TACTILE SURFACE

PROJECT: **ACCESS TILE®**

TRUNCATED DOME, DETECTABLE  
WARNING TACTILE SURFACE  
2X4 REPLACEABLE CAST IN PLACE  
INLINE DOME TILE DRAWING.

DRAWING NO. ACC-R-2X4

REV. NO.  
0



**DETAIL A**

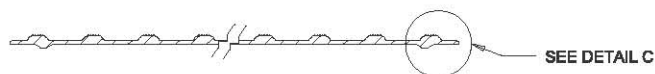
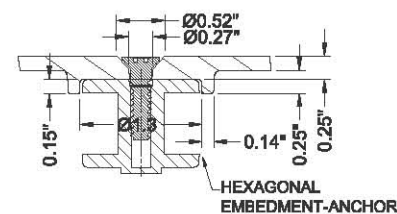
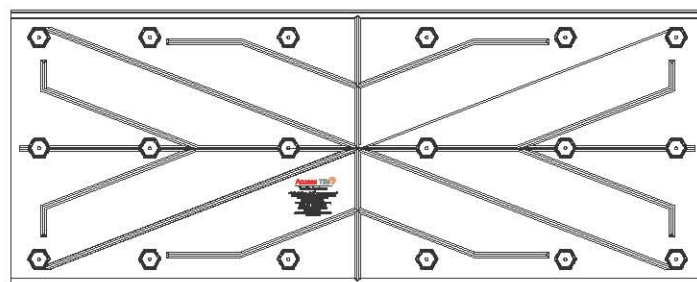
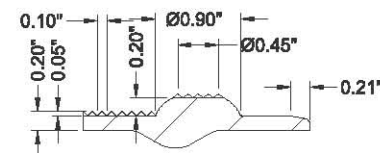
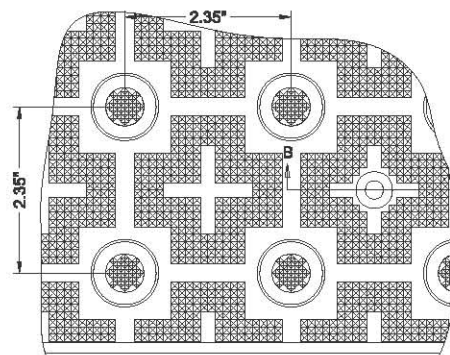
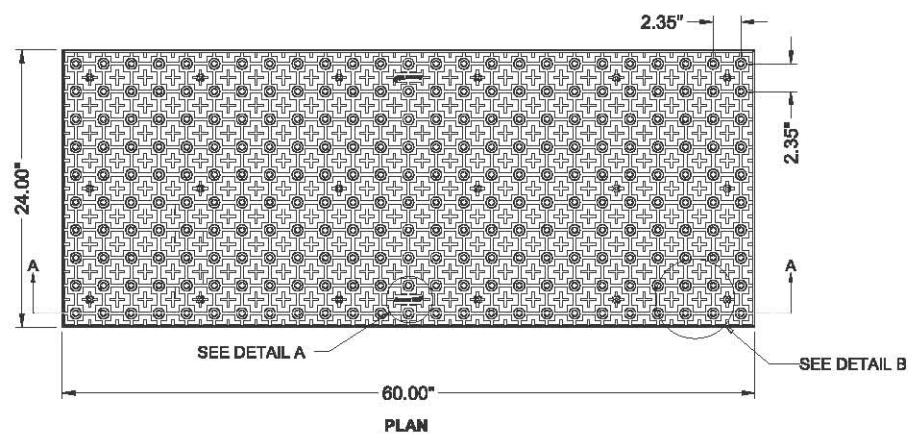


# 2' x 5'

## REPLACEABLE CAST IN PLACE 2.35" DOME SPACING

**Access Tile**

www.accesstile.com 888-679-4022



www.AccessTile.com

Access Products Inc

© Access Products Inc.  
ACCESS, ACCESS TILE, ACCESS + AND THE  
TWO AND THREE DIMENSIONAL DESIGNS  
ON THE DOMES ARE TRADEMARKS OF  
ENGINEERED SYSTEMS INC.  
PATENTS PENDING IN THE USA, CANADA  
AND INTERNATIONALLY. MANUFACTURED  
AND DISTRIBUTED BY  
ACCESS WORLD PRODUCTS INC.  
www.accesstile.com  
© KENNETH E. SZEKELY

### MATERIAL LIST

ITEM	DESCRIPTION	PART NO.	QTY
1	ACCESS TILE	ACC-R-2X5	1
2	ANCHOR ASSEMBLY	ACC-R-ANCH	15

NOTE: ANCHOR ARE INCLUDED AND ASSEMBLED  
ON TILE.

### REFERENCE DRAWINGS

DWG. NO.	DESCRIPTION

No.	DATE	REVISION	APPR.
-----	------	----------	-------

SCALE  
1"=1'-0" U.I.D.  
FULL SIZE ONLY

DESIGNED	KES	DATE	10/06/2008
DRAWN	RWO		10/15/2008
DRAWN	KES		

PROJECT MANAGER

TRADE	PART NO.
DETECTABLE WARNING SURFACE	ACC-R-2X5

MATERIAL POLYMER COMPOSITE

SUBJECT  
**ACCESS TILE**  
TRUNCATED DOME, DETECTABLE  
WARNING TACTILE SURFACE

PROJECT  
**ACCESS TILE**  
TRUNCATED DOME, DETECTABLE  
WARNING TACTILE SURFACE  
2X5 REPLACEABLE CAST IN PLACE  
INLINE DOME TILE DRAWING.

DRAWING NO.	REV. NO.
ACC-R-2X5	0

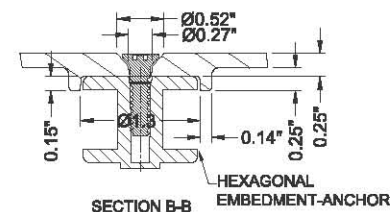
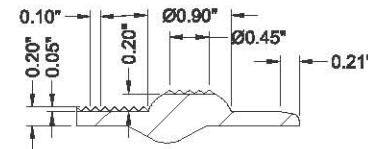
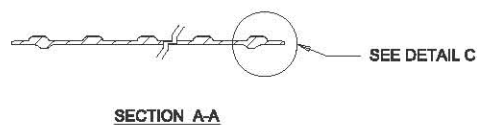
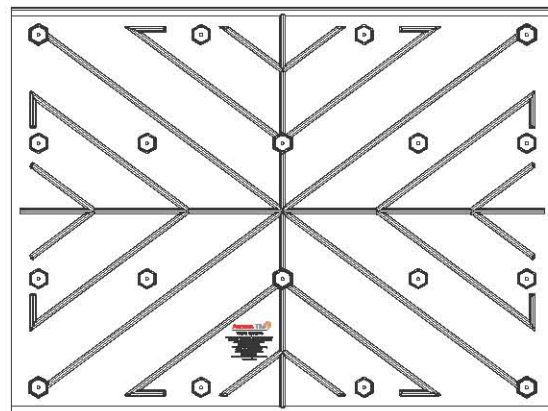
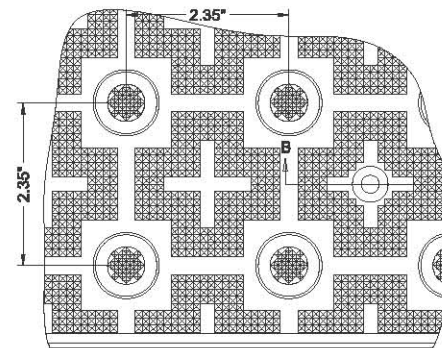
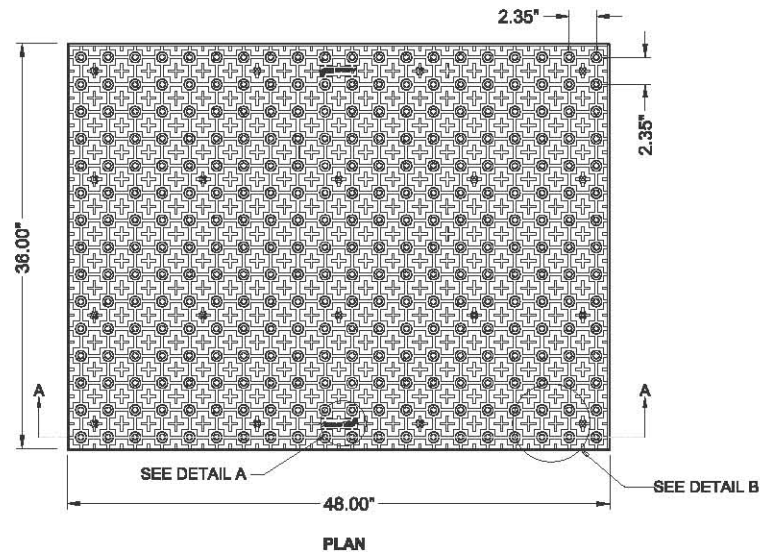


# 3' x 4'

## REPLACEABLE CAST IN PLACE 2.35" DOME SPACING

**Access Tile**

www.accesstile.com 888-679-4022



**DETAIL A**

www.AccessTile.com

Access Products Inc

© Access Products Inc.  
ACCESS, ACCESS TILE, ACCESS + AND THE  
TWO AND THREE DIMENSIONAL DESIGNS  
ON THE DOMES ARE TRADEMARKS OF  
ENGINEERED SYSTEMS INC.  
PATENTS PENDING IN THE USA, CANADA  
AND INTERNATIONALLY. MANUFACTURED  
AND DISTRIBUTED BY  
ACCESS WORLD PRODUCTS INC.  
www.accesstile.com  
© KENNETH E. SZEKELY

### MATERIAL LIST

ITEM	DESCRIPTION	PART NO.	QTY
1	ACCESS TILE	ACC-R-3X4	1
2	ANCHOR ASSEMBLY	ACC-R-ANCH	18

**NOTE: ANCHOR ARE INCLUDED AND ASSEMBLED ON TILE.**

### REFERENCE DRAWINGS

DWG. NO.	DESCRIPTION

NO.	DATE	REVISION	APPR.
-----	------	----------	-------

SCALE  
1"=1'-0" U.N.I.T.  
FULL SIZE ONLY

DESIGNED	KES	DATE	10/09/2006
DRAWN	RWO	DATE	10/18/2006
DRAWN	KES		

PROJECT MANAGER

TRADE	Detectable Warning Surface	PART NO.	ACC-R-3X4
-------	----------------------------	----------	-----------

MATERIAL POLYMER COMPOSITE

SUBJECT  
**ACCESS TILE®**  
TRUNCATED DOME, DETECTABLE  
WARNING TACTILE SURFACE

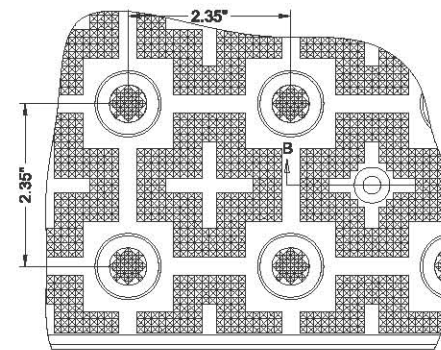
PROJECT  
**ACCESS TILE®**  
TRUNCATED DOME, DETECTABLE  
WARNING TACTILE SURFACE  
3X4 REPLACEABLE CAST IN PLACE  
INLINE DOME TILE DRAWING.

DRAWING NO.	ACC-R-3X4	REV. NO.	0
-------------	-----------	----------	---

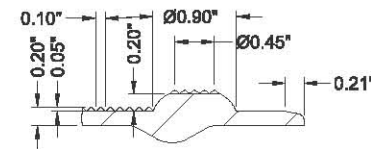


## REPLACEABLE CAST IN PLACE

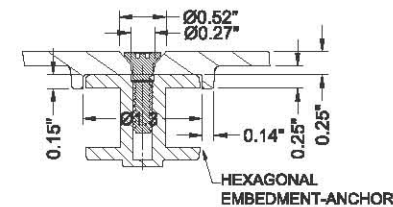
www.accesstile.com 888-679-4022



DETAIL B



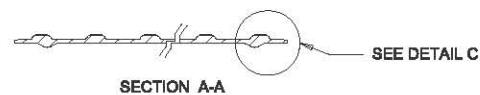
**DETAIL C**



**SECTION B-B**



**DETAIL A**



### UNDERSIDE VIEW

**SECTION A-A**

© Access Products Inc.  
ACCESS, ACCESS TILE, ACCESS + AND THE  
TWO AND THREE DIMENSIONAL DESIGNS  
ON THE DOME ARE TRADEMARKS OF  
ENGINEERED SYSTEMS INC.  
PATENTS PENDING IN THE USA, CANADA  
AND INTERNATIONALLY. MANUFACTURED  
AND DISTRIBUTED BY  
ACCESS WORLD PRODUCTS INC.  
[www.accesstile.com](http://www.accesstile.com)

## MATERIAL LIST

ITEM	DESCRIPTION	PART NO.	QTY
1	ACCESS TILE	ACC-R-3X5	1
2	ANCHOR ASSEMBLY	ACC-R-ANCH	24


NOTE: ANCHOR ARE INCLUDED AND ASSEMBLED ON TILE.

### REFERENCE DRAWINGS

DWG. NO.	DESCRIPTION

No.	DATE	REVISION	APPR.
-----	------	----------	-------

SCALE  
1"=1'-0" U.N.O.  
FULL SIZE ONLY

A graphic scale bar with markings at 0, 3, 6, 9, 12, and 15 feet. Below the 0 mark, there is a smaller segment labeled '5', indicating 5 feet. The text '1"=1'-0" U.N.O. FULL SIZE ONLY' is printed to the left of the scale bar.

DESIGNED	KES	DATE	10/09/2008
DRAWN	RWO		10/15/2008
DRAWN	KES		

PROJECT MANAGER	
-----------------	--

TRADE DETECTABLE WARNING SURFACE	PART NO. ACC-R-3X5
-------------------------------------	-----------------------

MATERIAL	POLYMER COMPOSITE
----------	-------------------

SUBJECT **ACCESS TILE®**

**ACCESS TILE**  
TRUNCATED DOME, DETECTABLE  
WARNING TACTILE SURFACE

PROJECT **ACCESS TILE**®

TRUNCATED DOME, DETECTABLE  
WARNING TACTILE SURFACE  
3X5 REPLACEABLE CAST IN PLACE  
INLINE DOME TILE DRAWING.

DRAWING NO. ACC-R-3X5	REV. NO. 0
--------------------------	---------------

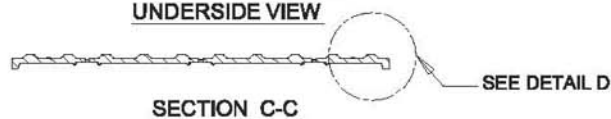
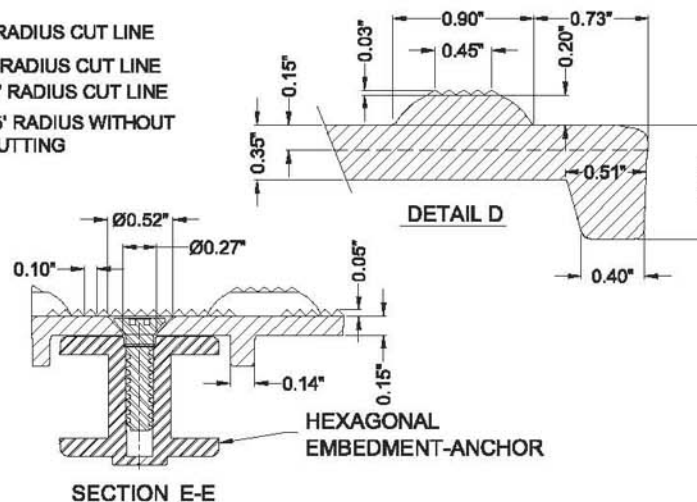
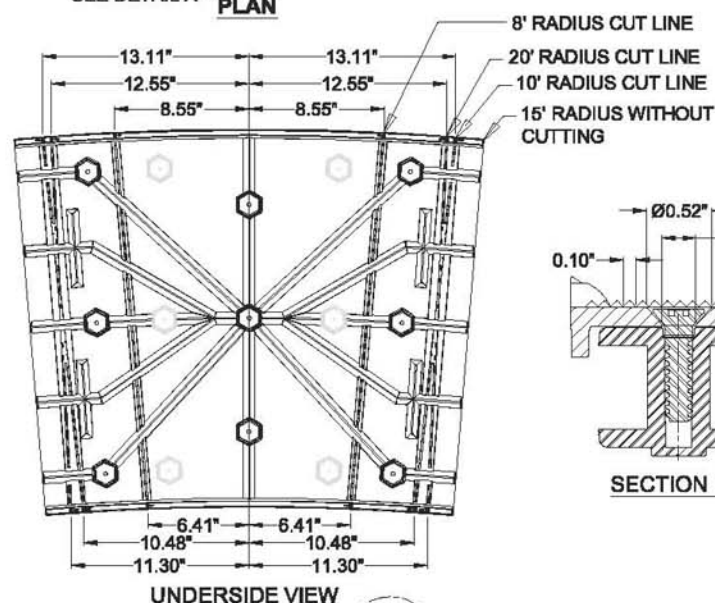
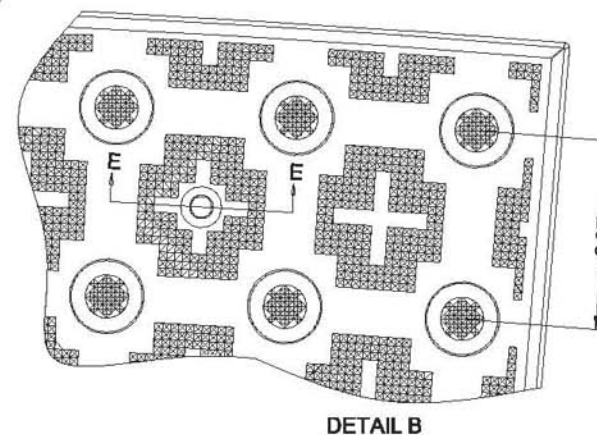
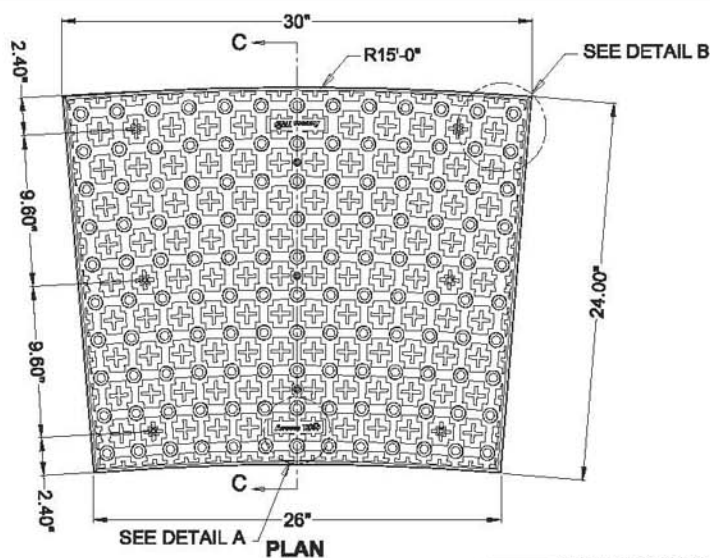


# RADIUS

REPLACEABLE CAST IN PLACE  
2.35" DOME SPACING

**AccessTile**

www.accesstile.com 888-679-4022



DETAIL A

NOTE: ALL CUT LINE RADII REFERENCE LARGER TILE RADII

AccessTile.com

Access Products Inc.

ACCESS, ACCESS TILE, ACCESS, AND THE THREE AND TWO DIMENSIONAL DESIGNS ON THE TILE BETWEEN DOMES AND ON DOMES ARE TRADEMARKS OF ENGINEERED SYSTEMS INC.

PATENTS PENDING IN THE UNITED STATES, CANADA AND INTERNATIONALLY.

MANUFACTURED AND DISTRIBUTED UNDER LICENSE BY ACCESS WORLD PRODUCTS INCORPORATED.

## MATERIAL LIST

ITEM	DESCRIPTION	PART NO.	QTY
1	ACCESS TILE	ACC-R-3024CRV	1
2	ANCHOR ASSEMBLY	ACC-R-ANCH	9

NOTE: ANCHORS ARE INCLUDED AND ASSEMBLED ON TILE

## REFERENCE DRAWINGS

DWG. NO.	DESCRIPTION

DATE	REVISION	APPR.
------	----------	-------

SCALE: 1"=1'-0" U.L.D. FULL SIZE ONLY

DESIGNED: KES DATE: 12/20/2013

DRAWN: VS DATE: 06/26/2014

CHECKED: DO

PROJECT MANAGER

TRADE: DETECTABLE WARNING SURFACE PART NO.: ACC-R-ANCHOR

MATERIAL: POLYMER COMPOSITE

SUBJECT: ACCESS TILE

TRUNCATED DOME, DETECTABLE WARNING TACTILE SURFACE

PROJECT: ACCESS TILE

TRUNCATED DOME, DETECTABLE WARNING TACTILE SURFACE

30"x24" CURVED REPLACEABLE CAST IN PLACE INLINE DOME TILE DRAWING.

DRAWING NO.: ACC-R-3024CRV REV. NO.: 0



## Federal

The Americans with Disabilities Act (ADA) recognizes and protects the civil rights of people with disabilities. To ensure that buildings and facilities are accessible to and usable by people with disabilities, the ADA establishes accessibility requirements. One of those requirements is for the installation of detectable warning surfaces as indicated by the following sections of the ADA Accessibility Guidelines (ADAAG):

**R304.1 General.** Detectable warnings shall consist of a surface of truncated domes aligned in a square or radial grid pattern and shall comply with R304.

**R304.1.1 Dome Size.** Truncated domes in a detectable warning surface shall have a base diameter of 23 mm (0.9 in) minimum to 36 mm (1.4 in) maximum, a top diameter of 50 percent of the base diameter minimum to 65 percent of the base diameter maximum, and a height of 5 mm (0.2 in).

**R304.1.2 Dome Spacing.** Truncated domes in a detectable warning surface shall have a center-to-center spacing of 41 mm (1.6 in) minimum and 61 mm (2.4 in) maximum, and a base-to-base spacing of 17 mm (0.65 in) minimum, measured between the most adjacent domes.

**R304.1.3 Contrast.** Detectable warning surfaces shall contrast visually with adjacent gutter, street or highway, or walkway surface, either light-on-dark or dark-on-light.

**R304.1.4 Size.** Detectable warning surfaces shall extend 610 mm (24 in) minimum in the direction of travel and the full width of the curb ramp [exclusive of flares], the landing, or the blended transition.

### R304.2 Location and Alignment

**R304.2.1 Perpendicular Curb Ramps.** Where both ends of the bottom grade break complying with R303.3.4 are 1.5 m (5.0 ft) or less from the back of curb, the detectable warning shall be located on the ramp surface at the bottom grade break. Where either end of the bottom grade break is more than 1.5 m (5.0 ft) from the back of curb, the detectable warning shall be located on the lower landing.

## KNOWING THE LAW

**R304.2.2 Landings and Blended Transitions.** The detectable warning shall be located on the landing or blended transition at the back of curb.

**R304.2.3 Alignment.** The rows of truncated domes in a detectable warning surface shall be aligned to be perpendicular or radial to the grade break between the ramp, landing, or blended transition and the street.

## California (CALTRANS)

Excerpts from the 2001 California Building Code, California Code of Regulations, Title 24, Part 2, Volume 1, California Building Standards Commission

**1102A.3-C Detectable warning.** Only approved DSA/AC detectable warning products and directional surfaces shall be installed as provided in the California Code of Regulations (CCR), Title 24, Part 1, Articles 2, 3, and 4.

**1117A.4.7 Detectable warnings.** A curb ramp shall have a detectable warning that extends the full width and depth of the curb ramp when the ramp slope is less than 1 unit vertical in 15 units horizontal (6.7% slope).

**1133B.8.3 Detectable warnings at transit boarding platforms.** Transit boarding platforms shall have a detectable warning texture extending the full length of the loading area.

**1133B.8.4 Detectable directional texture at boarding platforms.** At transit boarding platforms, the pedestrian access shall be identified with a detectable directional texture.

## UNDERSTANDING COMPLIANCE

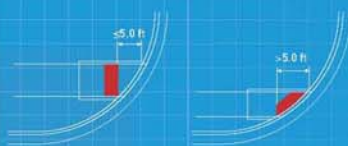


### R304.1.4 Curb Ramp and Size of Detectable Warning Area

- Full width of ramp excluding flares
- 24" minimum in the direction of travel



### R304.2.1 Perpendicular Curb Ramps



### R304.2.2 Landings and Blended Transitions

- Located on landing or blended transition at back of curb
- 36" in the direction of travel



### R305.4 Medians and Pedestrian Refuge Islands

- Shall have detectable warnings that comply with R304 at ramps and blended transitions
- At cut through islands at curb line in-line with face of curb and shall be separated by a 2 foot minimum length of walkway without detectable warnings



### R304.2.3 Rail Crossing

- Edge nearest rail crossing is 6 feet minimum and 15 feet maximum from center line of the nearest rail
- Truncated domes shall be aligned to be parallel with the direction of wheelchair travel

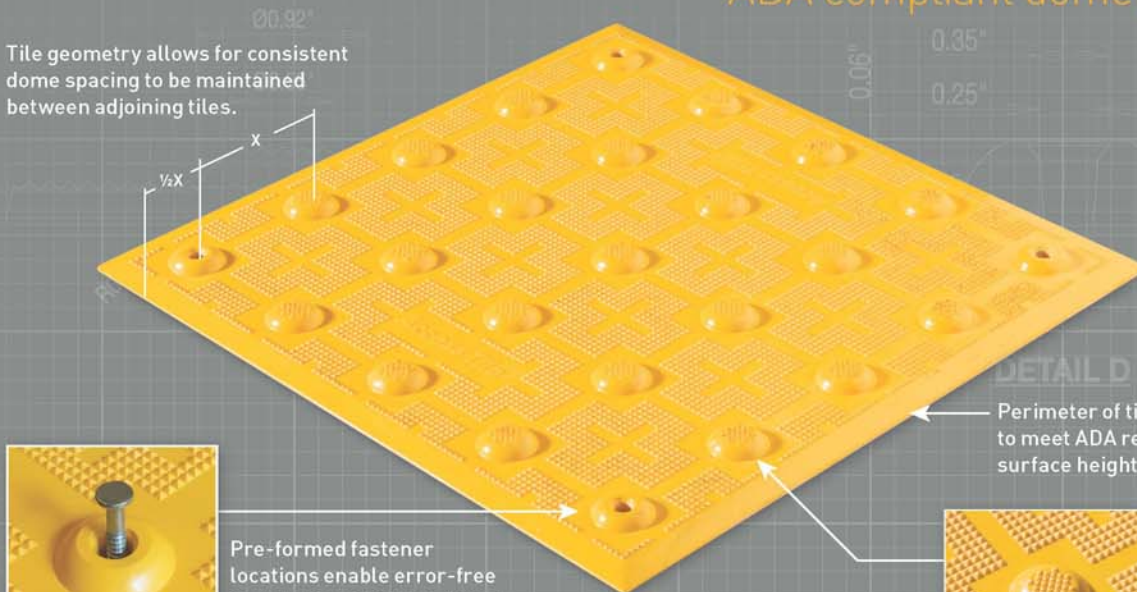




# intelligent design™ surface applied

## ADA compliant dome geometry

Tile geometry allows for consistent dome spacing to be maintained between adjoining tiles.



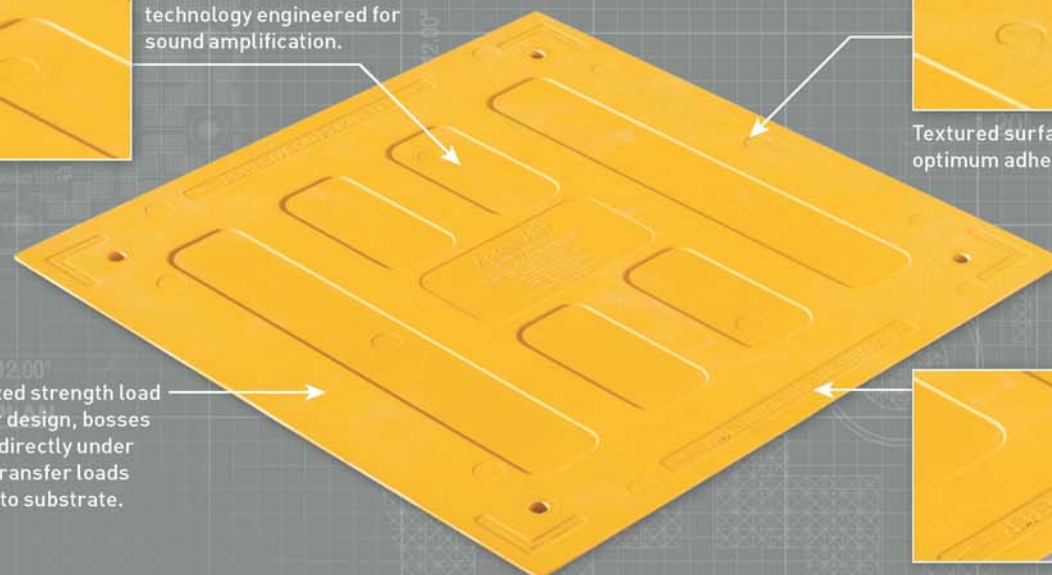
Pre-formed fastener locations enable error-free installation. Color-matched Tek™ Anchor with stainless steel fastener is supplied with tile.



High density, diamond grip™ pyramid micro texture designed for exceptional slip resistance in wet and dry conditions.



Audible detectability technology engineered for sound amplification.



Maximized strength load transfer design, bosses located directly under domes transfer loads directly to substrate.



Textured surface to allow optimum adhesive bond.



Adhesive location identified on reverse side of tile for easy, error-free installation.

easy to install, easy to replace  
designed for more environmentally-conscious  
installation and replacement



# INSTALLATION



- 1 Place the tile on the designated location and trace the perimeter with a thin permanent marker.
- 2 Set the tile aside and using a 4" diamond cup grinder, scour the concrete within the marked location and in correspondence with the location requiring adhesive as indicated in backside of tile.
- 3 Clear away the dust with a leaf blower then clean the back of the tile and the concrete with rag soaked in acetone.
- 4 Apply adhesive to back of tile (as indicated on tile). The first bead should be applied thin, 1/2" from the perimeter edge and a second thicker bead applied 1" inside of the first.
- 5 Set the tile true and square to the curb ramp and press down firmly.
- 6 While stepping down on either side of pre-formed hole, drill down 3" into concrete slab using a hammer drill and the recommended 1/4" diameter carbide drill bit.
- 7 While still applying pressure, remove the dust and any adhesive that surfaces and carefully set the supplied color-matched Tek™ Anchor with a plastic-tipped hammer. Repeat steps 6 & 7 while working across the tile from one end until all pre-formed fastener locations are completed.
- 8 Clean the perimeter of the tile and the immediately surrounding concrete with acetone making sure to remove any adhesive that has escaped from beneath the tile. Apply and smooth sealant around perimeter of tile.



**TACTILE Bond & Seal**  
Minimum of 1 tube for 10ft<sup>2</sup>

**Additional tube required to seal perimeter**  
**Order additional tubes using Part # TBS-010**

SEE DETAIL C

SECTION A-A





Low profile chamfered perimeter edge for smooth transition from surrounding walking surface to tile surface.

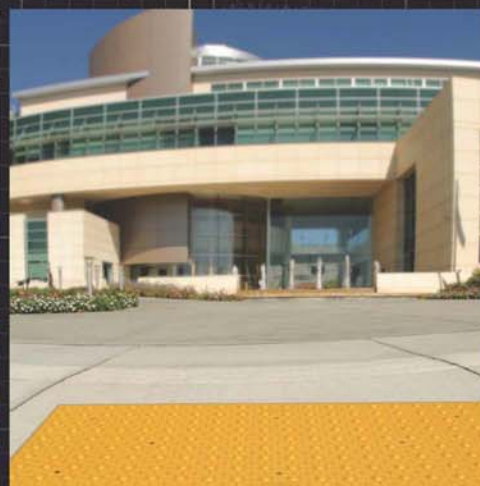
*Engineered for ultimate performance and optimal cost-effectiveness.*



Wide in-line dome configuration facilitates a smooth rolling transition for strollers, wheelchairs and walkers meeting federal and state standards.



High density, diamond grip™ pyramid micro texture designed for exceptional slip resistance in wet and dry conditions.



**Access Tile®**



# SURFACE APPLIED

## the most innovative retrofit system

Access Tile's Surface Applied tile is engineered to successfully upgrade any existing surface to comply with Federally mandated detectable warning requirements.

### ADA COMPLIANCE

[www.accesstile.com/ada-compliance](http://www.accesstile.com/ada-compliance)

- 2.35" center-to-center, in-line dome spacing meets ADA Federal and State requirements
- Truncated dome size and spacing compliant with ADA Federal and State requirements, 0.9" base and 0.45" top diameter
- Fully complies with all ADA and OSHA requirements for surface height transitions to eliminate trip hazards
- Consistent dome spacing when tiles are adjoined (side-by-side or end-to-end)
- Wide in-line dome configuration facilitates a smooth rolling transition for strollers, wheelchairs and walkers

### ASTM & UL TESTING

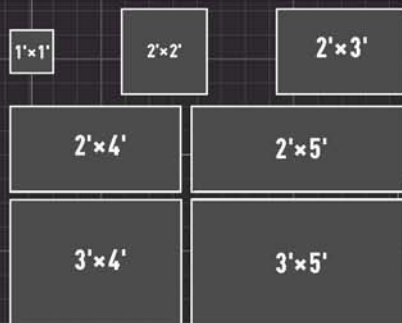
[www.accesstile.com/specifications](http://www.accesstile.com/specifications)

- Tensile Strength ASTM D 638
- Flexural Strength ASTM D 790
- Compressive Strength ASTM D 695
- Accelerated Weathering ASTM G 155
- Slip Resistance ASTM C 1028
- Flame Spread Index ASTM E 84
- Accelerated Aging (freeze thaw) D1037
- Linear Thermal Expansion ASTM D 696-03
- Tile Bond Strength ASTM C1583

### INTELLIGENT DESIGN FEATURES

- Audible detectability technology engineered for sound amplification
- Engineered load transfer design with bosses located directly under domes transfer loads directly to substrate
- Bevelled perimeter edge meets ADA vertical displacement requirements
- Strategically placed pre-formed fastener hole locations enhance installation integrity and provide easy installation
- Tiles shipped with color-matched fasteners
- Adhesive location identified on reverse side of tile for easy, error-free installation
- Tactile Bond&Seal is available through all our authorized distributors. The system is designed and tested to be both a structural adhesive and perimeter edge sealant.
- Interactive sizes – all tiles maintain pattern repeat when mounted side-to-side or top-to-bottom

### PRODUCT SIZES\*



### STANDARD COLORS



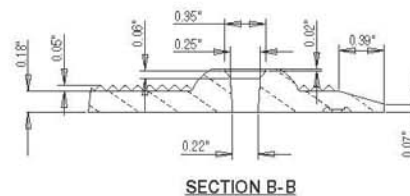
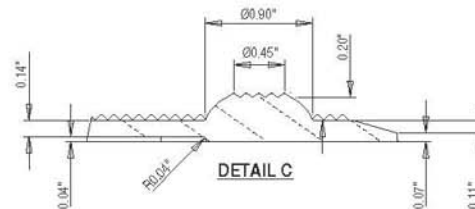
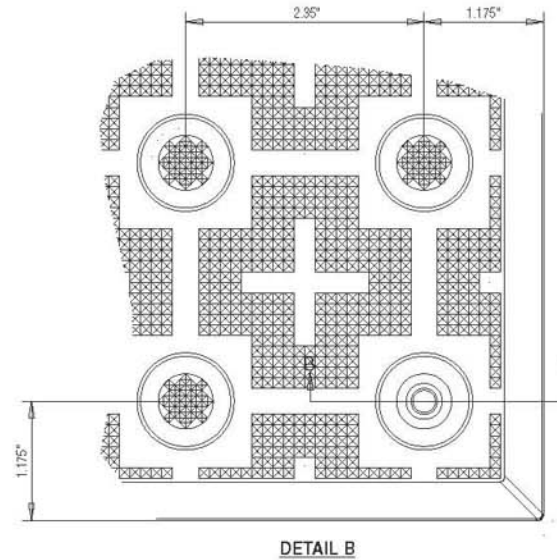
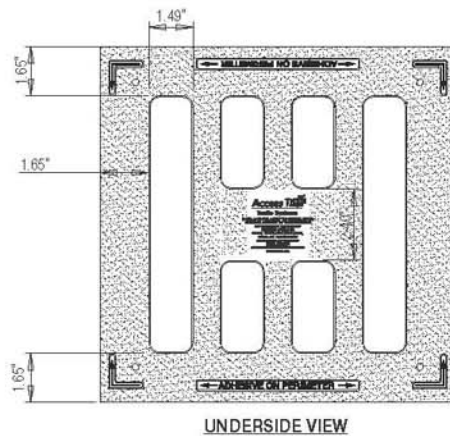
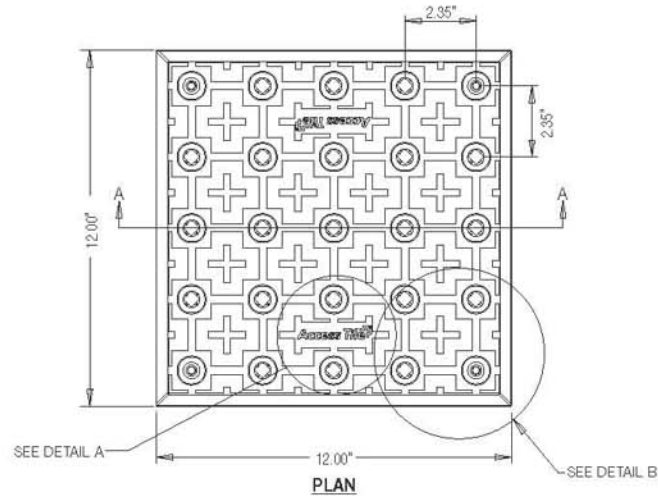
\* OTHER CUSTOM SIZES AND COLORS MAY BE AVAILABLE



# 1' x 1'

## SURFACE APPLIED | Upgrade existing concrete to comply with ADAAG detectable warning. 2.35" DOME SPACING

**Access Tile**  
www.accesstile.com 888-679-4022



www.AccessTile.com

Access Products Inc.

© Access Products Inc.  
ACCESS, ACCESS TILE, ACCESS, AND THE THREE AND TWO DIMENSIONAL DESIGNS ON THE TILE BETWEEN DOMES AND ON DOMES ARE TRADEMARKS OF ENGINEERED SYSTEMS INC. PATENTS PENDING IN THE UNITED STATES, CANADA AND INTERNATIONALLY MANUFACTURED AND DISTRIBUTED UNDER LICENSE BY ACCESS WORLD PRODUCTS INCORPORATED www.accesstile.com  
© KENNETH E. SZEKELY

### MATERIAL LIST

ITEM	DESCRIPTION	PART NO.	QTY
1	ACCESS TILE	ACC-S-12X12-XX	1
2	TEK ANCHOR	ACC-FAST-XX	4

### REFERENCE DRAWINGS

DWG. NO.	DESCRIPTION

NO.	DATE	REVISION	APP.

SCALE 1"=12" U.S. FULL SIZE ONLY

DESIGNED KES DATE 10/09/2008  
DRAWN RWO DATE 10/15/2008  
CHECKED KES

NOTE: STANDARD TOLERANCE = 0.00"

TRADE DETECTABLE WARNING SURFACE PART NO. ACC-S-12X12

MATERIAL POLYMER COMPOSITE

SUBJECT **ACCESS TILE®**  
TRUNCATED DOME, DETECTABLE  
WARNING TACTILE SURFACE

PROJECT **ACCESS TILE®**  
TRUNCATED DOME, DETECTABLE  
WARNING TACTILE SURFACE  
1'X1' SURFACE APPLIED  
INLINE DOME TILE DRAWING.

DRAWING NO. ACC-S-12X12 REV. NO. 0

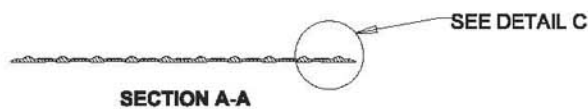
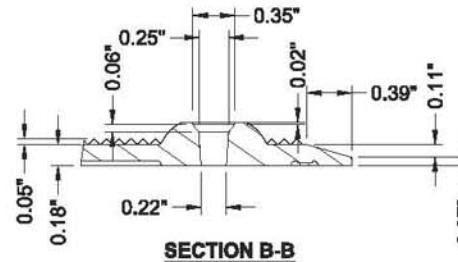
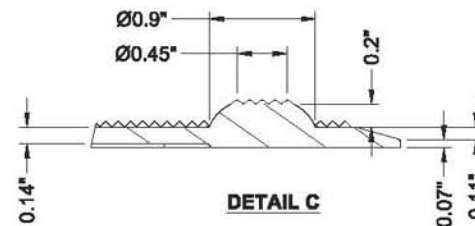
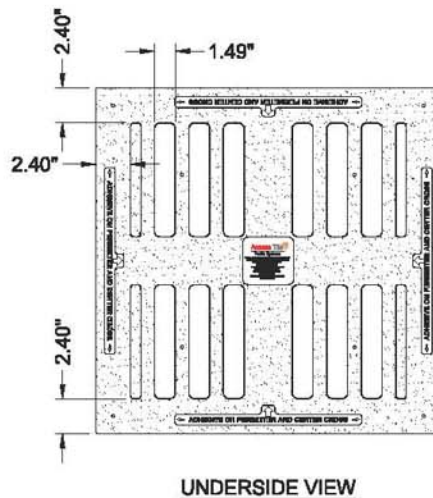
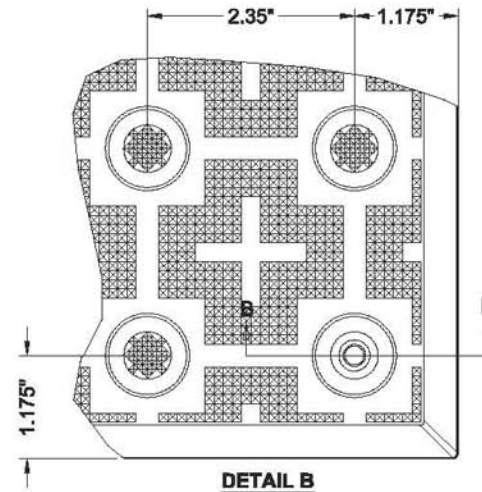
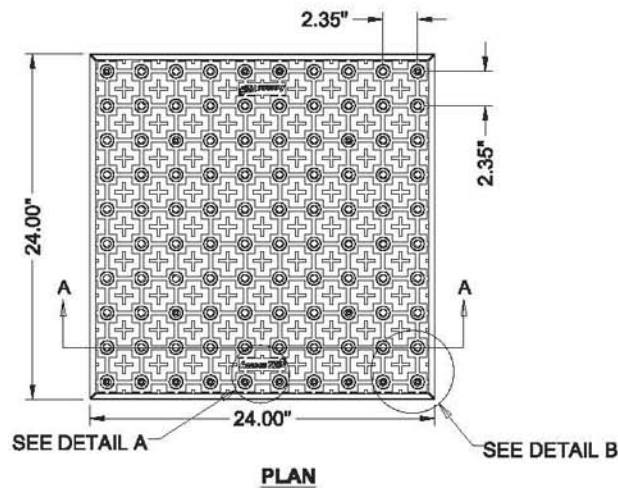


# 2' x 2'

## SURFACE APPLIED | Upgrade existing concrete to comply with ADAAG detectable warning. 2.35" DOME SPACING

**Access Tile**

www.accesstile.com 888-679-4022



www.AccessTile.com

Access Products Inc

© Access Products Inc.  
ACCESS, ACCESS TILE, ACCESS AND THE THREE AND TWO  
DIMENSIONAL DESIGNS ON THE TILE BETWEEN DOMES  
AND ON DOMES ARE TRADEMARKS OF  
ENGINEERED SYSTEMS INC.  
PATENTS PENDING IN THE UNITED STATES,  
CANADA AND INTERNATIONALLY  
MANUFACTURED AND DISTRIBUTED  
UNDER LICENSE BY  
ACCESS WORLD PRODUCTS INCORPORATED  
www.accesstile.com  
KENNETH E.  
SZEKELY

### MATERIAL LIST

ITEM	DESCRIPTION	PART NO.	QTY
1	ACCESS TILE	ACC-S-2X2	1
2	Tek® ANCHOR	ACC-S-ANCH	8
3	TACTILE BOND AND SEAL	TBS-010	1 ea

NOTE: FASTENERS AND 1 TUBE OF TACTILE BOND  
AND SEAL ARE INCLUDED WITH TILE

### REFERENCE DRAWINGS

DWG. NO.	DESCRIPTION

No.	DATE	REVISION	APPR.
-----	------	----------	-------

SCALE  
1"=1'-0" U.S.D.  
FULL SIZE ONLY

DESIGNED	KES	DATE	10/09/2008
DRAWN	RWD		10/15/2008
CHECKED	KES		

PROJECT MANAGER

TRADE  
DETECTABLE WARNING SURFACE

MATERIAL  
POLYMER COMPOSITE

SUBJECT

**ACCESS TILE®**

TRUNCATED DOME, DETECTABLE  
WARNING TACTILE SURFACE

PROJECT

**ACCESS TILE®**

TRUNCATED DOME, DETECTABLE  
WARNING TACTILE SURFACE  
2X2 SURFACE APPLIED  
INLINE DOME TILE DRAWING.

DRAWING NO.	REV. NO.
ACC-S-2X2	0



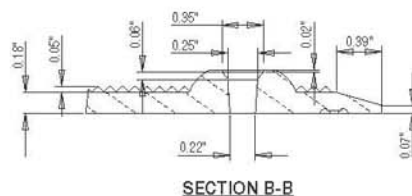
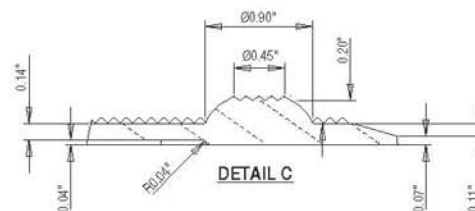
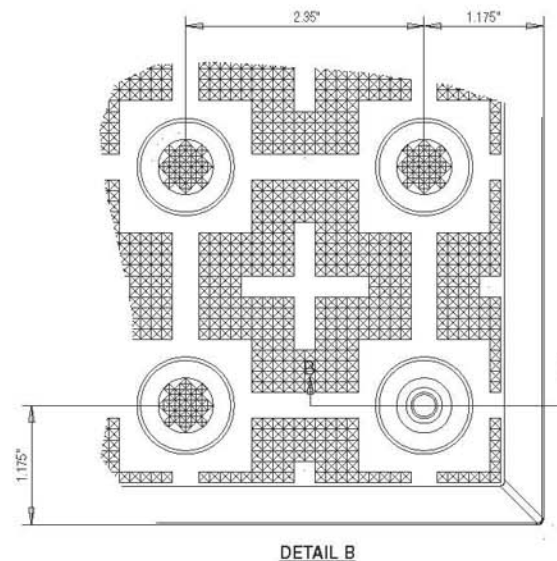
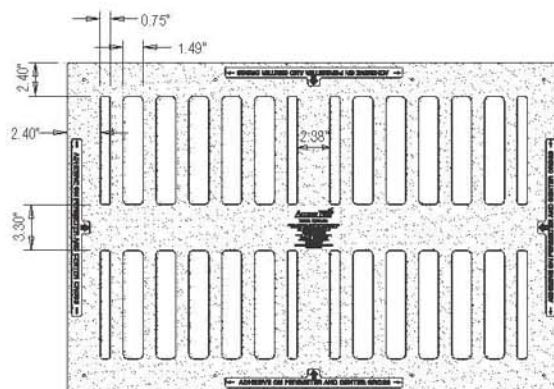
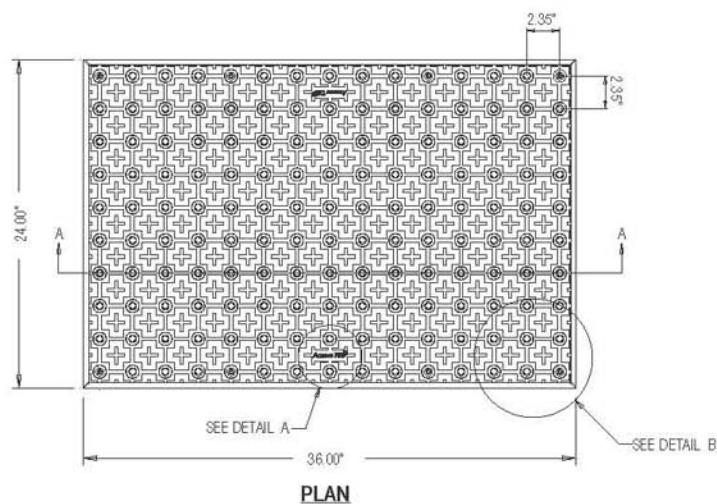
# 2' x 3'

## SURFACE APPLIED 2.35" DOME SPACING

Upgrade existing concrete to comply with ADAAG detectable warning.

**Access Tile**

www.accesstile.com 888-679-4022



www.AccessTile.com

Access Products Inc.

© Access Products Inc.  
ACCESS, ACCESS TILE, ACCESS AND THE THREE AND TWO  
DIMENSIONAL DESIGNS ON THE TILE BETWEEN DOMES  
AND/OR DOMES ARE TRADEMARKS OF  
ENGINEERED SYSTEMS INC.  
PATENTS PENDING IN THE UNITED STATES,  
CANADA AND INTERNATIONALLY  
MANUFACTURED AND DISTRIBUTED  
UNDER LICENSE BY  
ACCESS WORLD PRODUCTS INCORPORATED  
www.accesstile.com  
© KENNETH E. SZEKELY

### MATERIAL LIST

ITEM	DESCRIPTION	PART NO.	QTY
1	ACCESS TILE	ACC-R-24X36-XX	1
2	TEK ANCHOR	ACC-FRST-XX	8

### REFERENCE DRAWINGS

DWG. NO.	DESCRIPTION

NO.	DATE	REVISION	APP.
-----	------	----------	------

SCALE 1"=12" O.D. FULL SIZE ONLY

DESIGNED	KES	DATE	10/09/2008
DRAWN	RWO	DATE	10/15/2008
CHECKED	KES		

NOTE: STANDARD TOLERANCE = 0.005"

TRADE DETECTABLE WARNING SURFACE PART NO. ACC-S-24X36

MATERIAL POLYMER COMPOSITE

SUBJECT **ACCESS TILE®**

TRUNCATED DOME, DETECTABLE

WARNING TACTILE SURFACE

PROJECT **ACCESS TILE®**

TRUNCATED DOME, DETECTABLE

WARNING TACTILE SURFACE

2X3 SURFACE APPLIED

INLINE DOME TILE DRAWING.

DRAWING NO. ACC-S-24X36 REV. NO. 0



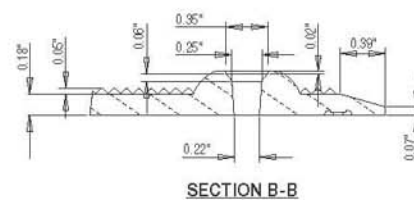
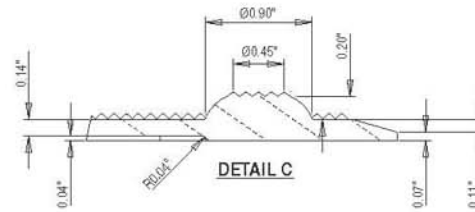
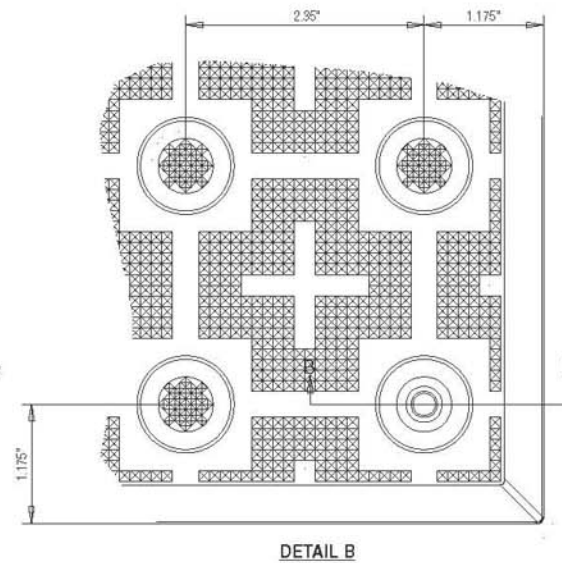
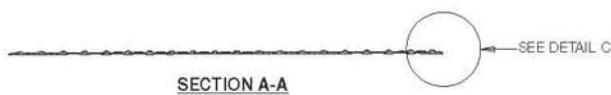
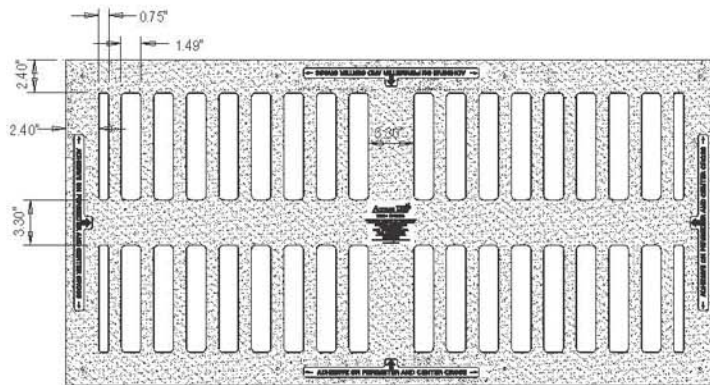
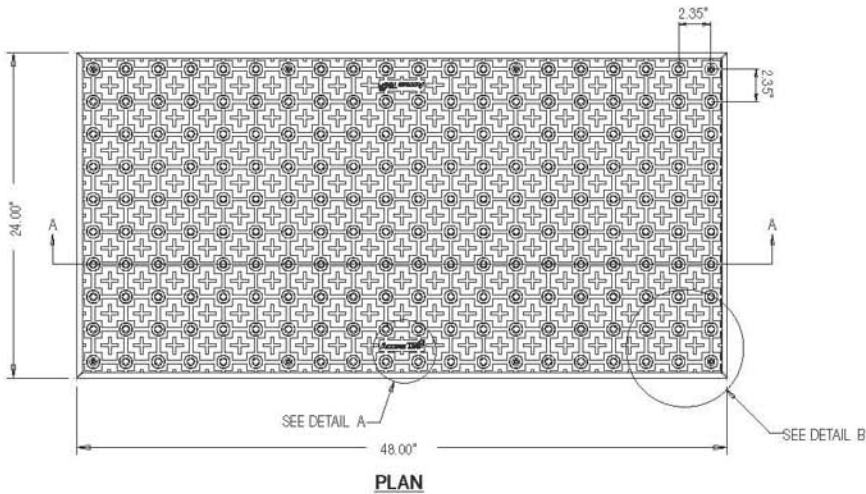
# 2' x 4'

## SURFACE APPLIED | Upgrade existing concrete to comply with ADAAG detectable warning.

### 2.35" DOME SPACING

**AccessTile**

www.accesstile.com 888-679-4022



www.AccessTile.com

Access Products Inc.

© Access Products Inc.  
ACCESS, ACCESS TILE, ACCESS, AND THE THREE AND TWO DIMENSIONAL DESIGNS ON THE TILE BETWEEN DOMES AND ON DOMES ARE TRADEMARKS OF ENGINEERED SYSTEMS INC. PATENTS PENDING IN THE UNITED STATES, CANADA AND INTERNATIONALLY. MANUFACTURED AND DISTRIBUTED UNDER LICENSE BY: ACCESS WORLD PRODUCTS INCORPORATED www.accesstile.com  
KENNETH E. SZKELY

#### MATERIAL LIST

ITEM	DESCRIPTION	PART NO.	QTY.
1	ACCESS TILE	ACC-S-24X48-IX	1
2	TEK ANCHOR	ACC-C-FRST-XX	8

#### REFERENCE DRAWINGS

DWG. NO.	DESCRIPTION

NO.	DATE	REVISION	APP.

SCALE 1"=15" UNO. FULL SIZE ONLY

DESIGNED	KES	DATE	10/09/2008
DRAWN	PMO		10/15/2008
CHECKED	KES		

NOTE: STANDARD TOLERANCE = 0.005"

TRADE DETECTABLE WARNING SURFACE PART NO. ACC-S-24X48

MATERIAL POLYMER COMPOSITE

SUBJECT ACCESS TILE®

TRUNCATED DOME, DETECTABLE WARNING TACTILE SURFACE

PROJECT ACCESS TILE®

TRUNCATED DOME, DETECTABLE WARNING TACTILE SURFACE 2'x4' SURFACE APPLIED IN LINE DOME TILE DRAWING.

DRAWING NO. ACC-S-24X48 REV NO. 0



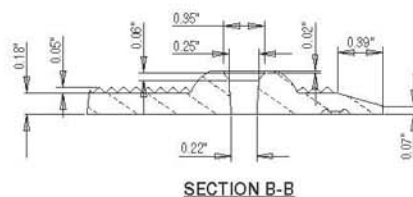
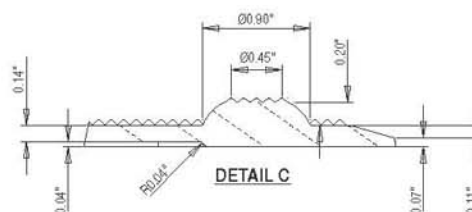
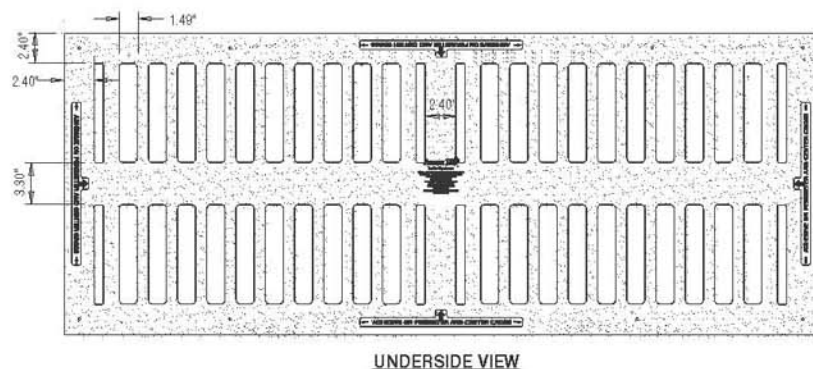
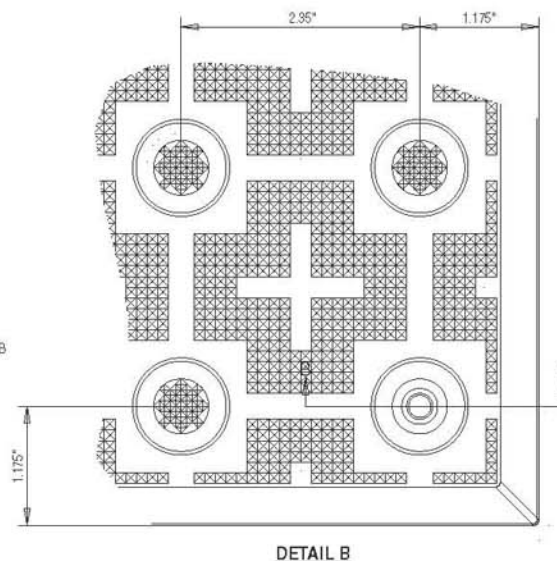
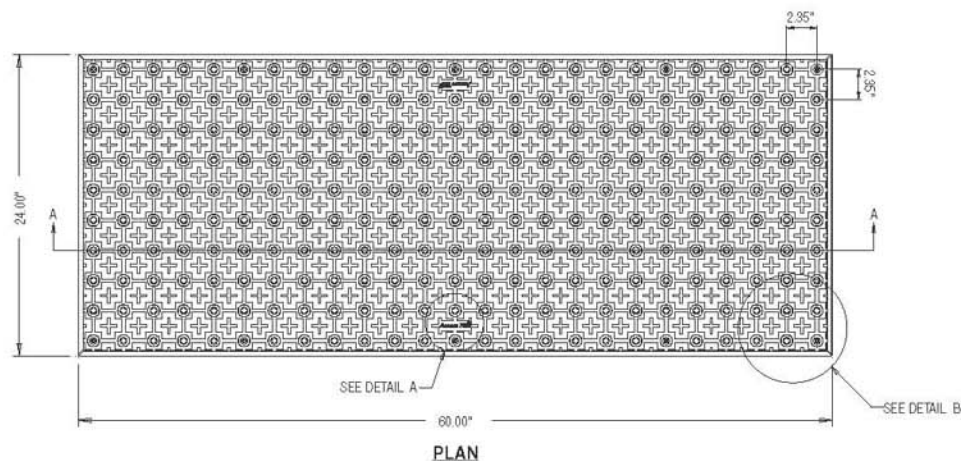
# 2' x 5'

## SURFACE APPLIED | Upgrade existing concrete to comply with ADAAG detectable warning.

### 2.35" DOME SPACING

**Access Tile**

www.accesstile.com 888-679-4022



www.AccessTile.com

Access Products Inc.

© Access Products Inc.  
ACCESS, ACCESS TILE, ACCESS AND THE THREE AND TWO  
DIMENSIONAL DESIGNS ON THE TILE BETWEEN DOMES  
AND ON DOMES ARE TRADEMARKS OF  
ENGINEERED SYSTEMS INC.  
PATENTS PENDING IN THE UNITED STATES,  
CANADA AND INTERNATIONALLY  
MANUFACTURED AND DISTRIBUTED  
UNDER LICENSE BY  
ACCESS WORLD PRODUCTS INCORPORATED  
www.accesstile.com  
© KENNETH E. SZKELY

#### MATERIAL LIST

ITEM	DESCRIPTION	PART NO.	QTY.
1	ACCESS TILE	ACC-S-2460-XX	1
2	TEK ANCHOR	ACC-FAST-XX	10

#### REFERENCE DRAWINGS

DWG. NO.	DESCRIPTION

NO.	DATE	REVISION	APP.
-----	------	----------	------

SCALE  
1"=18" U.S. FULL SIZE ONLY

DESIGNED	KES	DATE	10/09/2008
DRAWN	RWO		10/15/2008
CHECKED	KES		

NOTE: STANDARD TOLERANCE = 0.00"

TRADE	DETECTABLE WARNING SURFACE	PART NO.	ACC-S-2460
MATERIAL	POLYMER COMPOSITE		

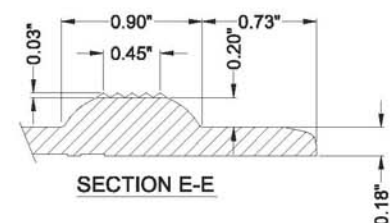
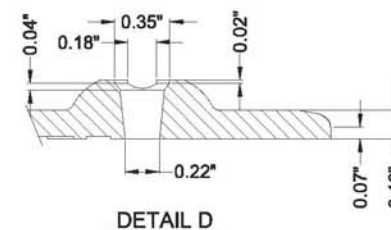
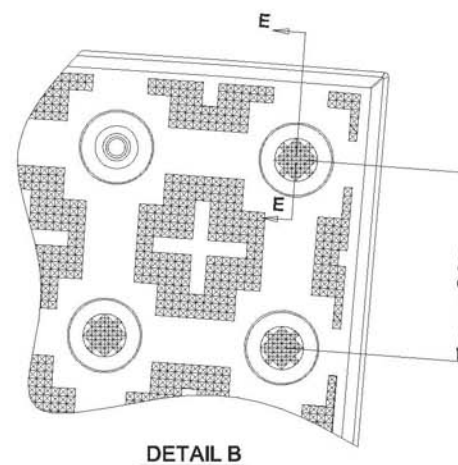
**SUBJECT**  
**ACCESS TILE®**  
TRUNCATED DOME, DETECTABLE  
WARNING TACTILE SURFACE

**PROJECT**  
**ACCESS TILE®**  
TRUNCATED DOME, DETECTABLE  
WARNING TACTILE SURFACE  
2X5 SURFACE APPLIED  
INLINE DOME TILE DRAWING.


DRAWING NO.	ACC-S-24X60	REV. NO.	0
-------------	-------------	----------	---

**SURFACE APPLIED** | Upgrade existing concrete to comply with ADAAG detectable warning.  
**2.35" DOME SPACING**

www.accesstile.com 888-679-4022



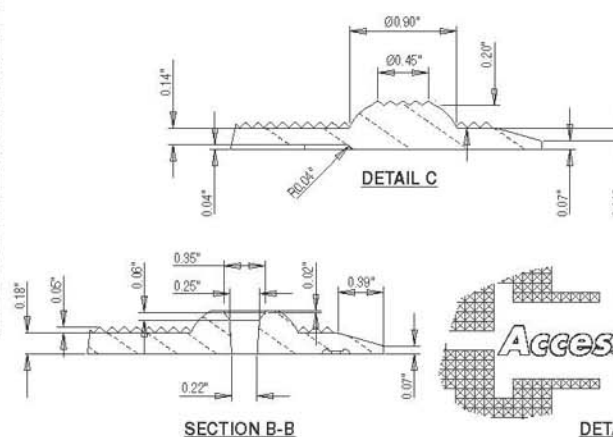
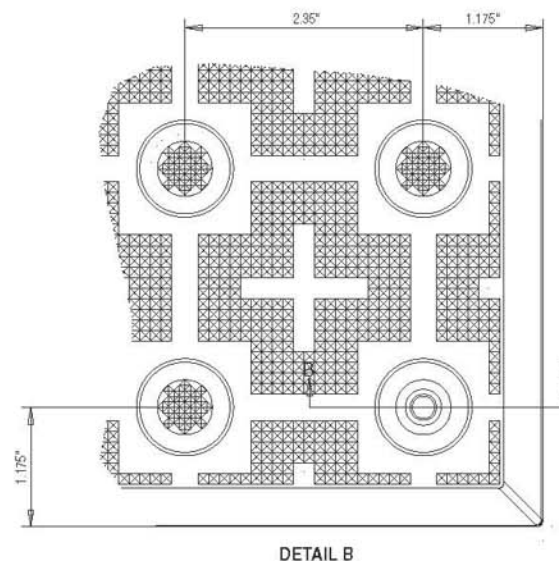
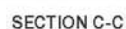
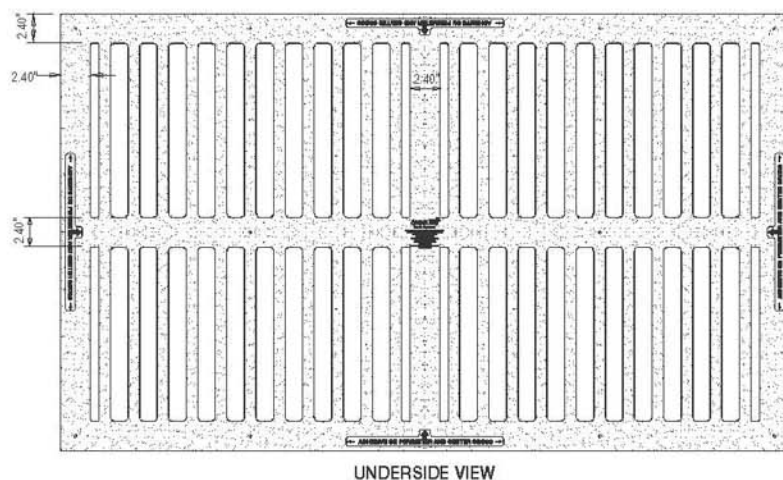
### DETAIL A

AccessTile.com			
Access Products Inc.			
ACCESS, ACCESS TILE, ACCESS <sup>®</sup> AND THE THREE AND TWO DIMENSIONAL DESIGNS ON THE TILE BETWEEN DOMES AND ON DOMES ARE TRADEMARKS OF ENGINEERED SYSTEMS INC.			
PATENTS PENDING IN THE UNITED STATES, CANADA AND INTERNATIONALLY.			
MANUFACTURED AND DISTRIBUTED UNDER LICENSE BY ACCESS WORLD PRODUCTS INCORPORATED.			
MATERIAL LIST			
ITEM	DESCRIPTION	PART NO.	QTY
1	ACCESS TILE	ACC-S-3024CRV	1
2	Tek <sup>™</sup> ANCHOR	ACC-S-ANCH	16
3	TACTILE BOND AND SEAL	TBS-O10	1 ea
NOTE: FASTENERS AND 1 TUBE OF TACTILE BOND AND SEAL ARE INCLUDED WITH TILE.			
REFERENCE DRAWINGS			
DWG. NO.		DESCRIPTION	
No.	DATE	REVISION	APPROVED
SCALE			
$1"=1'-0"$ U.N.O. FULL SIZE ONLY 			
DESIGNED		DATE	
KES		12/20/2013	
DRAWN		DATE	
VS		06/26/2014	
CHECKED			
DB			
PROJECT MANAGER			
TRADE DETECTABLE WARNING SURFACE		PART NO. ACC-S-3024CRV	
MATERIAL POLYMER COMPOSITE			
SUBJECT			
<b>ACCESS TILE<sup>®</sup></b> TRUNCATED DOME, DETECTABLE WARNING TACTILE SURFACE			
PROJECT			
<b>ACCESS TILE<sup>®</sup></b> TRUNCATED DOME, DETECTABLE WARNING TACTILE SURFACE 30"x24" CURVED SURFACE APPLIED INLINE DOME TILE DRAWING.			
DRAWING NO. ACC-S-3024CRV			REV. NO. 0



**SURFACE APPLIED** | Upgrade existing concrete to comply with ADAAG detectable warning.  
**2.35" DOME SPACING**

www.accesstile.com 888-679-4022



Access Products Inc

© Access Products Inc.

ACCESS, ACCESS TILE, ACCESS AND THE THREE AND TWO DIMENSIONAL DESIGNS ON THE TILE BETWEEN DOMES AND ON DOMES ARE TRADEMARKS OF ENGINEERED SYSTEMS INC. PATENTS PENDING IN THE UNITED STATES, CANADA AND INTERNATIONALLY MANUFACTURED AND DISTRIBUTED UNDER LICENSE BY ACCESS WORLD PRODUCTS INCORPORATED

© KENNETH E. SZEKELY

## MATERIAL LIST

ITEM	DESCRIPTION	PART NO.	QTY
1	ACCESS TILE	ACC-S-36X60-XX	1
2	TEKANCHOR	ACC-FAST-XX	15

#### REFERENCE DRAWINGS

DWG. NO.	DESCRIPTION


No.	DATE	REVISION	APPR.
-----	------	----------	-------

SCALE 1"=1'-0" UNO.  
FULL SIZE ONLY

DESIGNED	KES	DATE	10/09/2008
DRAWN	RWO		10/15/2008
CHECKED	KES		

NOTE: STANDARD TOLERANCE  $\pm 0.06$

TRADE DETECTABLE WARNING SURFACE	PART NO. A005-06000
-------------------------------------	------------------------

MATERIAL	POLYMER COMPOSITE
----------	-------------------

**ACCESS TILE®**  
TRUNCATED DOME, DETECTABLE  
WARNING TACTILE SURFACE

**PROJECT ACCESS TILE®**  
TRUNCATED DOME, DETECTABLE  
WARNING TACTILE SURFACE  
3"x5" SURFACE APPLIED  
INLINE DOME TILE DRAWING.

DRAWING NO.	REV. NO.
ACC-S-36X60	Ø





# DISTRIBUTION & CUSTOMER SUPPORT

The most extensive sales and distribution network in the industry.

Our distributor network provides stocking point of sale locations nationally. With immediate service and access to personal sales attention with local representatives, your experience with Access Tile will be superior in every aspect.

For a full listing of our distribution locations, please visit our website [www.accesstile.com](http://www.accesstile.com) or contact a representative by telephone, 888-679-4022



Access Tile is designed, tested,  
and manufactured in the **U.S.A.**

**Access**  
Products Inc.

**Access Tile**

**Access**  
Plus

**ecoglo**  
VISIBLY BETTER

**TRIPSTOP**  
Articulating Sidewalk Joint System

ACCESS, ACCESS TILE, ACCESS+ AND THE THREE AND TWO DIMENSIONAL DESIGNS ON THE TILE BETWEEN DOMES AND ON DOMES ARE TRADEMARKS OF ENGINEERED SYSTEMS INC. PAT. PENDING IN THE UNITED STATES. MANUFACTURED AND DISTRIBUTED UNDER LICENSE BY ACCESS WORLD PRODUCTS INCORPORATED

DETAIL E

# CAST IN PLACE REPLACEABLE

## SPECIFICATIONS

Part No.	Standard Sizes	Weight	Box Quantity	Anchors Included
ACC-R-1212-XX	1' x 1'	5 lbs. (2 kg)	10	4
ACC-R-2424-XX	2' x 2'	9 lbs. (4 kg)	10	9
ACC-R-2436-XX	2' x 3'	12 lbs. (5 kg)	10	12
ACC-R-2448-XX	2' x 4'	13lbs. (7 kg)	10	13
ACC-R-2460-XX	2' x 5'	18 lbs. (9 kg)	10	18
ACC-R-3648-XX	3' x 4'	24 lbs. (11kg)	10	18
ACC-R-3660-XX	3' x 5'	31lbs. (14 kg)	10	24
ACC-R-3024CRV	30" x 24" 15' Radius	10 lbs. (4 kg)	10	9
ACC-R-ANCH	Anchor Assembly		50	
BIT-T27	T-27 Tamper Proof Torx® Bit		5	

## STANDARD COLORS

	Federal Yellow (YW) FED 3353B / RAL 1013		Colonial Red / Brown (COL) FED 30109 / RAL 8012		Light Gray (LG) FED 26280
	Ochre Yellow (OCR) FED 23394		Ocean Blue (BL) FED 15187 / RAL 3436		Dark Gray (DG) FED 36118 / FED 36091 RAL 3486
	Brick Red (RD) FED 23144 / RAL 3016		Pearl White (WH) FED 37875		Onyx Black (BK) FED 37038 / RAL 9005

## PHYSICAL CHARACTERISTICS

ASTM Reference	Test Description	Test Results
ASTM D 695	Compressive Strength	26,900
ASTM D 790	Flexural Strength	31,300
ASTM D 570	Water Absorption	0.05%
ASTM C 1028	Slip Resistance	1.18 Dry / 0.88 wet
ASTM E 84	Flame Spread Index	≤25
ASTM B 117	Salt Spray	No Change (300 hours)
ASTM 1308	Chemical Stain	No Effect
ASTM C 501	Abrasion Resistance	lw >500
ASTM G 155	Accelerated Weathering	Delta E <5 (2,000 hours)
ASTM D 638	Tensile Strength	12,800 psi
AASHTO-H20	Load Bearing at 10,410 lbs.	No Cracking, Delamination or Deformation
ASTM C 1026	Freeze/Thaw/Heat	No Chipping, Cracking or Peeling
ASTM D 1037	Accelerated Aging (Freeze/Thaw)	No Change in Color, Gloss or Delamination
ASTM D 696-03	Linear Thermal Expansion	$9.45 \times 10^{-7}$ per ° Fahrenheit
RCRA-C	Non-Hazardous Classification	Non-Hazardous

Products listed in this catalog represent typical average values determined in accordance with accepted test methods. The data is subject to normal manufacturing and testing variations, and subject to change without notice. Specifications, see [www.accessstile.com](http://www.accessstile.com)

ACCESS, ACCESS TILE, ACCESS+ AND THE THREE AND TWO DIMENSIONAL DESIGNS ON THE TILE BETWEEN DOMES AND ON DOMES ARE TRADEMARKS OF ENGINEERED SYSTEMS INC. PAT. PENDING IN THE UNITED STATES. MANUFACTURED AND DISTRIBUTED UNDER LICENSE BY ACCESS WORLD PRODUCTS INCORPORATED



# SURFACE APPLIED

## SPECIFICATIONS

Part No.	Standard Sizes	Weight	Box Quantity	Anchors Included
ACC-S-1212-XX	1' x 1'	2 lbs. (1 kg)	16	4
ACC-S-2424-XX	2' x 2'	8 lbs. (4kg)	16	12
ACC-S-2436-XX	2' x 3'	10 lbs. (5 kg)	16	8
ACC-S-2448-XX	2' x 4'	13 lbs. (6 kg)	16	8
ACC-S-2460-XX	2' x 5'	16 lbs. (7 kg)	16	10
ACC-S-3648-XX	3' x 4'	20 lbs. (9 kg)	16	12
ACC-S-3660-XX	3' x 5'	27 lbs. (12 kg)	16	15
ACC-S-3024CRV	30" x 24" 15' Radius	8 lbs. (4 kg)	16	8
ACC-S-ANCH-XX	Tek™ Anchor		50	
TBS-010	Tactile Bond & Seal		12	

## STANDARD COLORS

	Federal Yellow (YW) FED 3353B / RAL 1003		Colonial Red / Brown (COL) FED 20109 / RAL 8012		Light Gray (LG) FED 26280
	Ochre Yellow (OCR) FED 23594		Ocean Blue (BL) FED 15187 / RAL 2486		Dark Gray (DG) FED 35118 / FED 36081 RAL 2486
	Brick Red (RD) FED 22144 / RAL 3016		Pearl White (WH) FED 33875		Onyx Black (BK) FED 17018 / RAL 9005

## PHYSICAL CHARACTERISTICS

ASTM Reference	Test Description	Test Results
ASTM D 695	Compressive Strength	26,900
ASTM D 790	Flexural Strength	31,300
ASTM D 570	Water Absorption	0.05%
ASTM C 1028	Slip Resistance	1.18 Dry / 0.88 wet
ASTM E 84	Flame Spread Index	≤25
ASTM B 117	Salt Spray	No Change (300 hours)
ASTM 1308	Chemical Stain	No Effect
ASTM C 501	Abrasion Resistance	Iw >500
ASTM G 155	Accelerated Weathering	Delta E <5 (2,000 hours)
ASTM D 638	Tensile Strength	12,800 psi
AASHTO-H20	Load Bearing at 10,410 lbs.	No Cracking, Delamination or Deformation
ASTM C 1026	Freeze/Thaw/Heat	No Chipping, Cracking or Peeling
ASTM D 1037	Accelerated Aging (Freeze/Thaw)	No Change in Color, Gloss or Delamination
ASTM D 696-03	Linear Thermal Expansion	$9.45 \times 10^{-7}$ per ° Fahrenheit
ASTM C 1583	Tile Bond Strength	Passed
RCRA-C	Non-Hazardous Classification	Non-Hazardous

Products listed in this catalog represent typical average values determined in accordance with accepted test methods. The data is subject to normal manufacturing and testing variations, and subject to change without notice. Specifications, see [www.accesstile.com](http://www.accesstile.com)

ACCESS, ACCESS TILE, ACCESS+ AND THE THREE AND TWO DIMENSIONAL DESIGNS ON THE TILE BETWEEN DOMES AND ON DOMES ARE TRADEMARKS OF ENGINEERED SYSTEMS INC. PAT. PENDING IN THE UNITED STATES. MANUFACTURED AND DISTRIBUTED UNDER LICENSE BY ACCESS WORLD PRODUCTS INCORPORATED

# SALES TEAM

educated experienced exceptional



John Heffner works closely with all of his distributors and contractors who value his extensive product knowledge and industry experience. Those who work with John know that he is a dedicated professional who is passionate about his work and always lends personal care to everything he is involved with. John leads our exceptional sales team and is most proud of their track record for proven customer satisfaction.

johnh@accessproducts.com  
Ph: 888-679-4022 ext. 150  
Cell: 916-919-0568  
Fax: 916-361-6546

## HEAD OFFICE SALES SUPPORT



The Access Products Inc. sales support group is an exceptional team that is always available to assist customers, distributors and contractors. Any inquiry from product knowledge and understanding our detectable warning tile systems to placing and tracking orders will be addressed professionally and promptly by our highly experienced sales support team.

Access Products Inc.  
241 Main Street, Suite 100  
Buffalo, NY 14203  
Ph: 888-679-4022  
Fax: 877-679-4022

General Inquiries: [info@accessproducts.com](mailto:info@accessproducts.com)  
Tech Support: [tech@accessproducts.com](mailto:tech@accessproducts.com)  
Sales: [sales@accessproducts.com](mailto:sales@accessproducts.com)

## FOR TECHNICAL ASSISTANCE OR ORDER INQUIRIES PLEASE CONTACT YOUR LOCAL TERRITORY MANAGER

### Pacific North

Idaho, Oregon, Washington, Montana, Wyoming, Alaska

Ph: 425-766-6234

### Pacific Central

Northern California, Hawaii, Northern Nevada

Ph: 916-844-4132

### Pacific South

Southern California, Southern Nevada, Arizona

Ph: 562-842-9934

### Mid West

Iowa, Kansas, Illinois, Minnesota, North Dakota, South Dakota, Nebraska, Wisconsin, Missouri, Colorado, Utah

Ph: 630-689-7574

### Gulf Region

Texas, Oklahoma, Arkansas, Louisiana, Mississippi, New Mexico

Ph: 817-205-6319

### Great Lakes Region

Michigan, Kentucky, Indiana, Ohio, Tennessee

Ph: 347-278-7729

### North Atlantic

New York, New Jersey, Pennsylvania

Ph: 908-255-2708

### North Atlantic

Connecticut, Massachusetts, Maine, New Hampshire, Rhode Island, Vermont

Ph: 203-901-0585

### Mid Atlantic

Delaware, Maryland, Virginia, West Virginia, Eastern Tennessee (Knoxville/Chattanooga), North Carolina, South Carolina, Georgia, Washington DC

Ph: 919-622-4615

### South Atlantic

Alabama, Florida

Ph: 407-803-2966

To find your local distributor go on line [www.accesstile.com/distribution](http://www.accesstile.com/distribution), or call 888-679-4022 / fax 877-679-4022.

One of our factory trained representatives will ensure you an accurate timely reply to any question you may have regarding the use or purchase of our products.





## Tactile Systems

the power of intelligent design and precision engineering™

Access Products Inc.  
241 Main Street, Suite 100  
Buffalo, NY 14203  
Ph: 888-679-4022  
Fax: 877-679-4022

General Inquiries: [info@accessproducts.com](mailto:info@accessproducts.com)  
Tech Support: [tech@accessproducts.com](mailto:tech@accessproducts.com)  
Sales: [sales@accessproducts.com](mailto:sales@accessproducts.com)

### OTHER INNOVATIONS FROM ACCESS PRODUCTS

 **ecoglo**  
VISIBLY BETTER

Photoluminescent Emergency Lighting,  
Signs & Stair Nosing Products  
[www.us.ecoglo.com](http://www.us.ecoglo.com)



**TRIPSTOP**  
Articulating Sidewalk Joint System

[www.us.tripstop.net](http://www.us.tripstop.net)