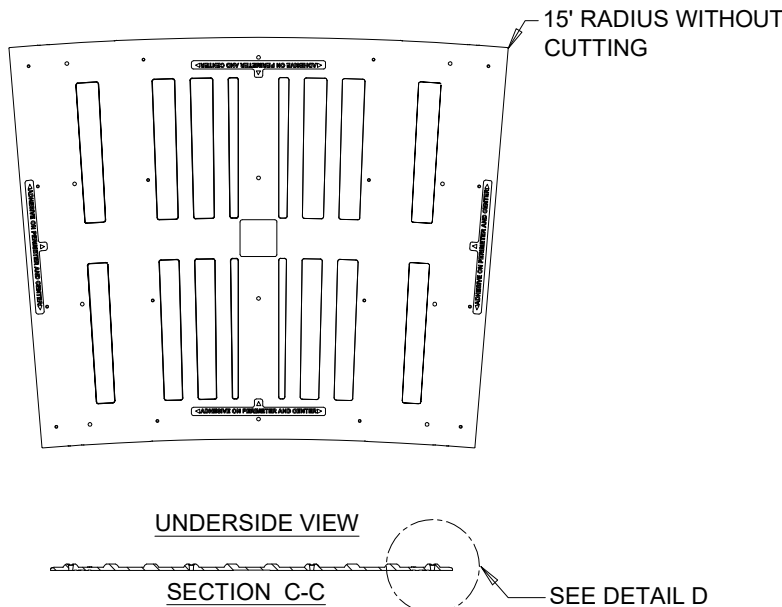
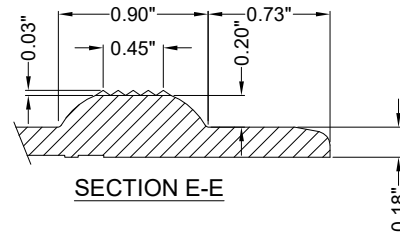
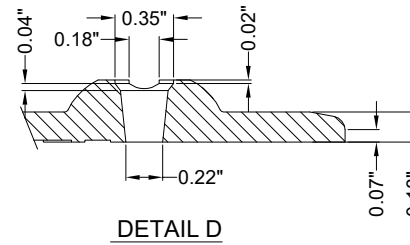
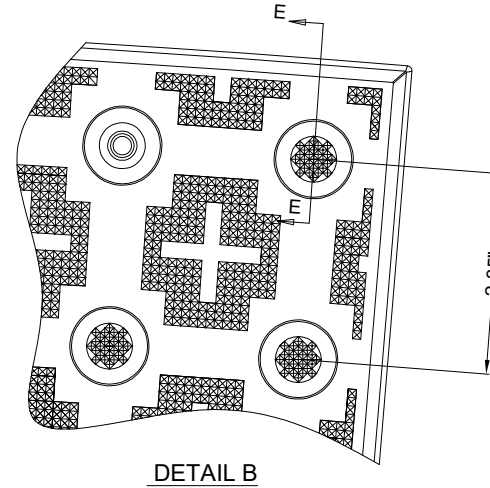
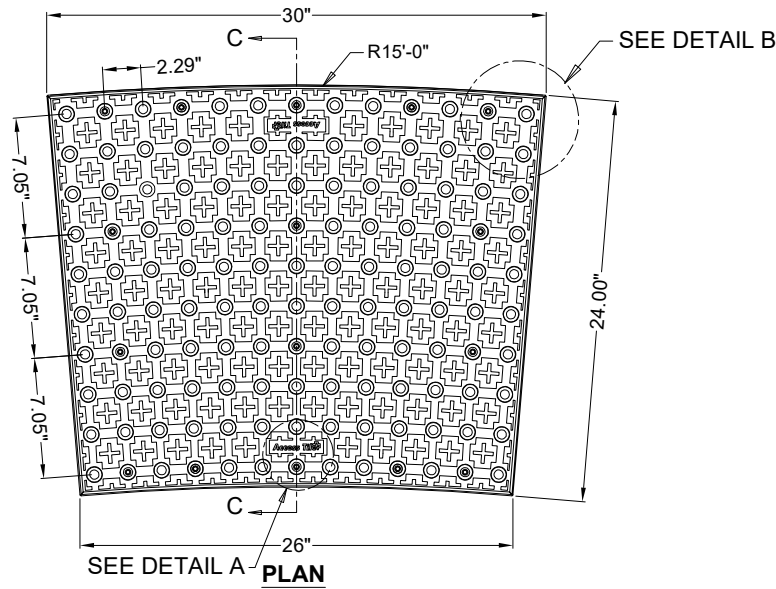


# RADIUS

## SURFACE APPLIED RADIUS TILE 2.35" DOME SPACING



NOTE: STANDARD TILE RADIUS - 15'-0"

AccessTile.com

Access Products Inc.

ACCESS, ACCESS TILE, ACCESS AND THE THREE AND TWO DIMENSIONAL DESIGNS ON THE TILE BETWEEN DOMES AND ON DOMES ARE TRADEMARKS OF ENGINEERED SYSTEMS INC.

PATENTS PENDING IN THE UNITED STATES, CANADA AND INTERNATIONALLY.

MANUFACTURED AND DISTRIBUTED UNDER LICENSE BY ACCESS WORLD PRODUCTS INCORPORATED.

### MATERIAL LIST

ITEM	DESCRIPTION	PART NO.	QTY
1	ACCESS TILE	ACC-S-3024CRV	1
2	TeK™ ANCHOR	ACC-S-ANCH	16
3	TACTILE BOND AND SEAL	TBS-010	1 ea

NOTE: FASTENERS AND 1 TUBE OF TACTILE BOND AND SEAL ARE INCLUDED WITH TILE

### REFERENCE DRAWINGS

DWG. NO.	DESCRIPTION

No.	DATE	REVISION	APPR.

SCALE 1"=1'-0" U.S. ONLY FULL SIZE ONLY

DESIGNED KES DATE 12/20/2013

DRAWN VS DATE 06/26/2014

CHECKED DD

PROJECT MANAGER

TRADE DETECTABLE WARNING SURFACE PART NO. ACC-S-3024CRV

MATERIAL POLYMER COMPOSITE

SUBJECT **ACCESS TILE®**  
TRUNCATED DOME, DETECTABLE WARNING TACTILE SURFACE

PROJECT **ACCESS TILE®**  
TRUNCATED DOME, DETECTABLE WARNING TACTILE SURFACE  
30"X24" CURVED SURFACE APPLIED INLINE DOME TILE DRAWING.

DRAWING NO. ACC-S-3024CRV REV. NO. Ø