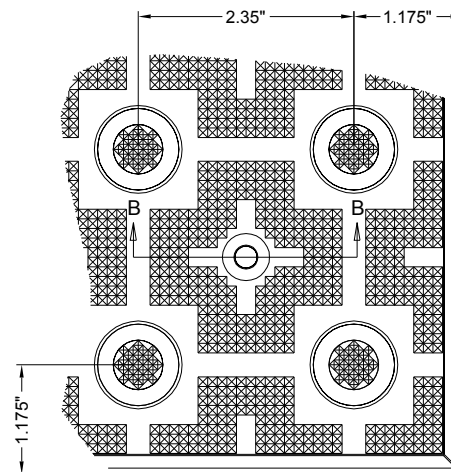
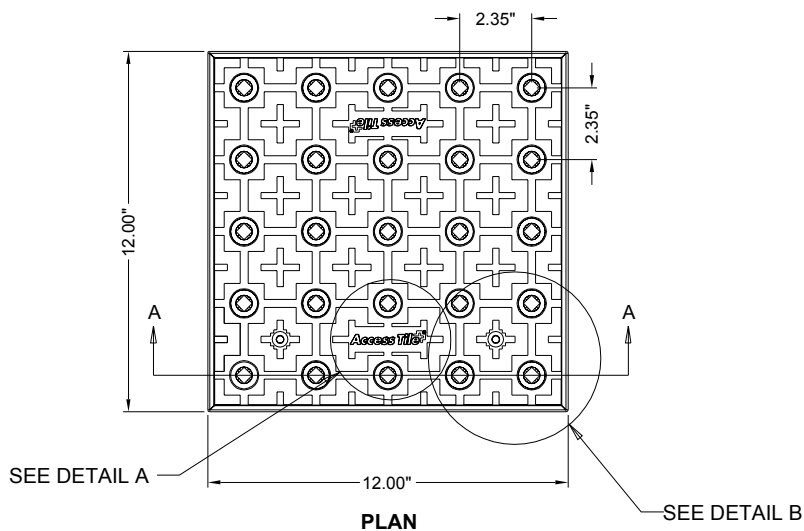


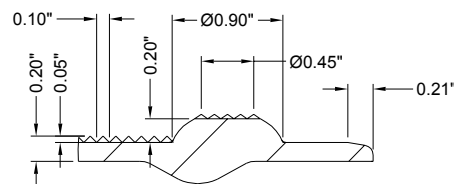
1'X1'

REPLACEABLE CAST IN PLACE  
2.35" DOME SPACING

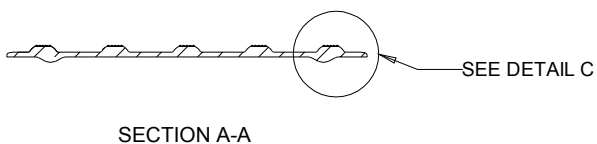
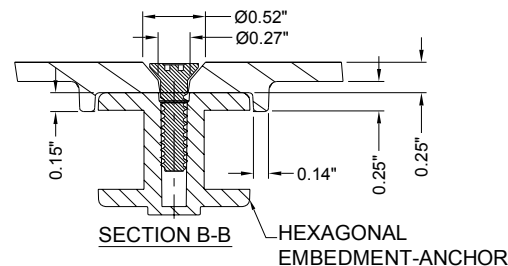
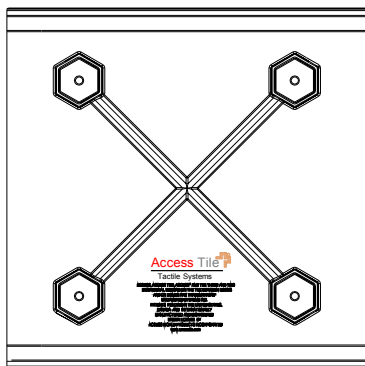
www.AccessTile.com 888-679-4022



**DETAIL B**



**DETAIL C**



www.AccessTile.com  
Access Products Inc

© Access Products Inc.  
ACCESS, ACCESS TILE, ACCESS + AND THE TWO AND THREE DIMENSIONAL DESIGNS ON THE DOMES ARE TRADEMARKS OF ENGINEERED SYSTEMS INC. PATENTS PENDING IN THE USA, CANADA AND INTERNATIONALLY. MANUFACTURED AND DISTRIBUTED BY ACCESS WORLD PRODUCTS INC. www.accesstile.com  
© KENNETH E. SZEKELY

**MATERIAL LIST**

ITEM	DESCRIPTION	PART NO.	QTY
1	ACCESS TILE	ACC-R-1X1	1
2	ANCHOR ASSEMBLY	ACC-R-ANCH	4

NOTE: ANCHOR ARE INCLUDED AND ASSEMBLED ON TILE.

**REFERENCE DRAWINGS**

DWG. NO.	DESCRIPTION

No.	DATE	REVISION	APPR.

SCALE  
1"=1'-0" U.S. ONLY  
FULL SIZE ONLY

DESIGNED	KES	DATE	10/09/2008
DRAWN	RWO	DATE	10/15/2008
DRAWN	KES		

PROJECT MANAGER

TRADE DETECTABLE WARNING SURFACE PART NO. ACC-R-1X1

MATERIAL POLYMER COMPOSITE

SUBJECT **ACCESS TILE®**  
TRUNCATED DOME, DETECTABLE WARNING TACTILE SURFACE

PROJECT **ACCESS TILE®**  
TRUNCATED DOME, DETECTABLE WARNING TACTILE SURFACE  
1X1 REPLACEABLE CAST IN PLACE  
INLINE DOME TILE DRAWING.

DRAWING NO.	ACC-R-1X1	REV. NO.	0
-------------	-----------	----------	---