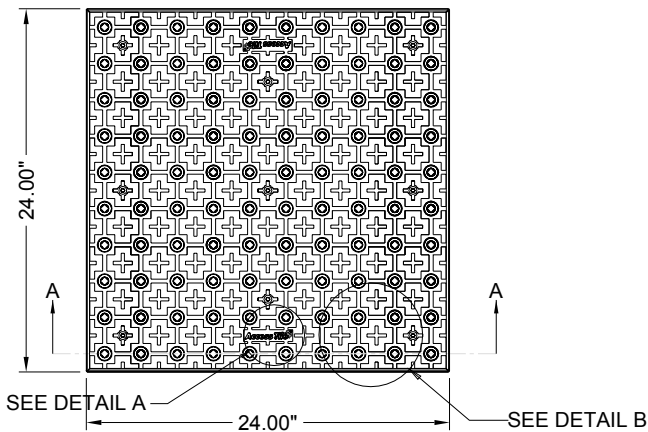


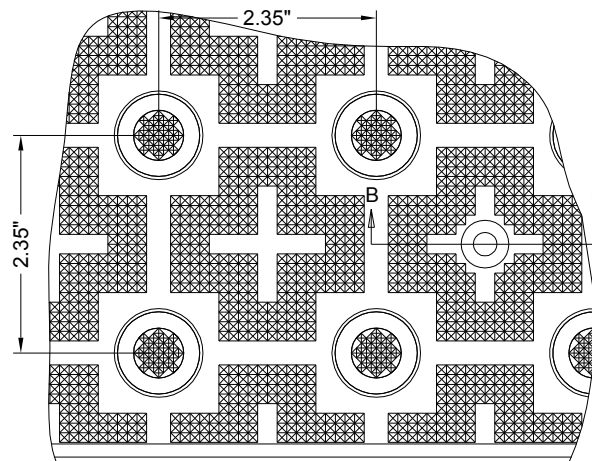
2'X2'

**REPLACEABLE CAST IN PLACE
2.35" DOME SPACING**

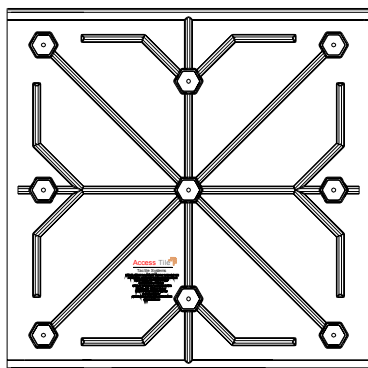
www.AccessTile.com 888-679-4022



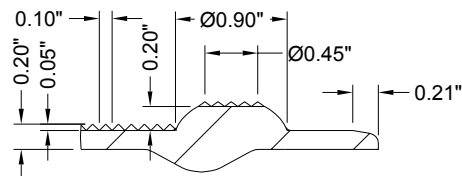
PLAN



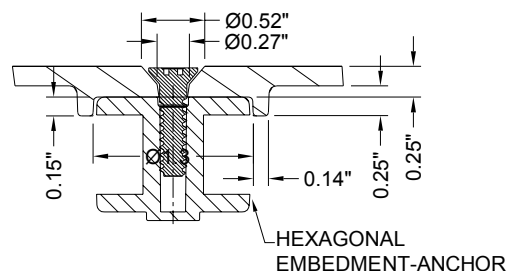
DETAIL B



UNDERSIDE VIEW

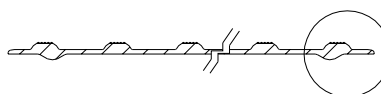


DETAIL C



SECTION B-B

HEXAGONAL
EMBEDMENT-ANCHOR



SECTION A-A

SEE DETAIL C



DETAIL A

www.AccessTile.com
Access Products Inc

© Access Products Inc.
ACCESS, ACCESS TILE, ACCESS + AND THE
TWO AND THREE DIMENSIONAL DESIGNS
ON THE DOMES ARE TRADEMARKS OF
ENGINEERED SYSTEMS INC.
PATENTS PENDING IN THE USA, CANADA
AND INTERNATIONALLY. MANUFACTURED
AND DISTRIBUTED BY
ACCESS WORLD PRODUCTS INC.
www.accesstile.com
© KENNETH E. SZEKELY

MATERIAL LIST

ITEM	DESCRIPTION	PART NO.	QTY
1	ACCESS TILE	ACC-R-2X2	1
2	ANCHOR ASSEMBLY	ACC-R-ANCH	9

NOTE: ANCHOR ARE INCLUDED AND ASSEMBLED ON TILE.

REFERENCE DRAWINGS

DWG. NO.	DESCRIPTION

No.	DATE	REVISION	APPR.

SCALE
1"=1'-0" U.S. & C. FULL SIZE ONLY

DESIGNED	KES	DATE	10/09/2008
DRAWN	RWO	DATE	10/15/2008
DRAWN	KES		

PROJECT MANAGER

TRADE: DETECTABLE WARNING SURFACE PART NO. ACC-R-2X2

MATERIAL: POLYMER COMPOSITE

SUBJECT: **ACCESS TILE®**
TRUNCATED DOME, DETECTABLE
WARNING TACTILE SURFACE

PROJECT: **ACCESS TILE®**
TRUNCATED DOME, DETECTABLE
WARNING TACTILE SURFACE
2X2 REPLACEABLE CAST IN PLACE
INLINE DOME TILE DRAWING.

DRAWING NO.	ACC-R-2X2	REV. NO.	0
-------------	-----------	----------	---