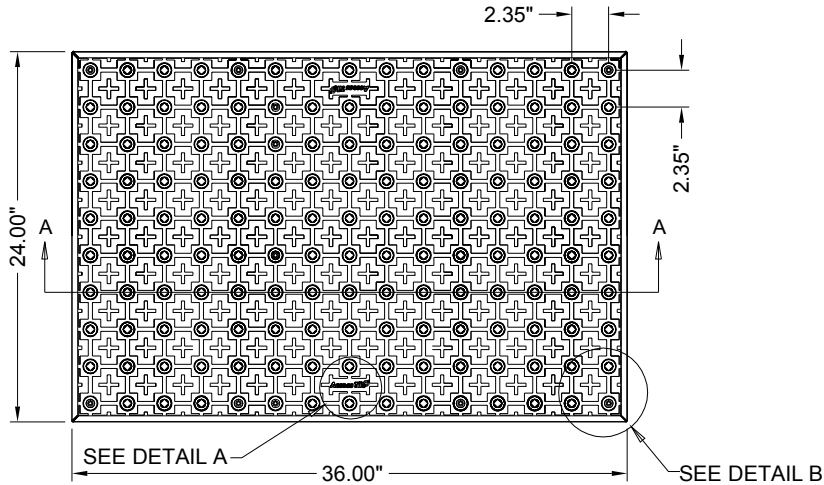


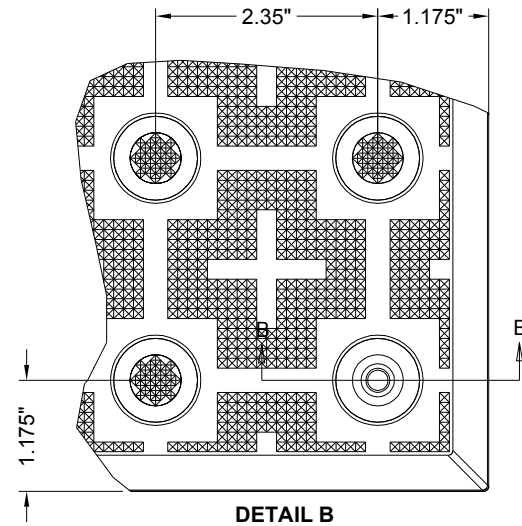
**2'X3'**

**SURFACE APPLIED  
2.35" DOME SPACING**

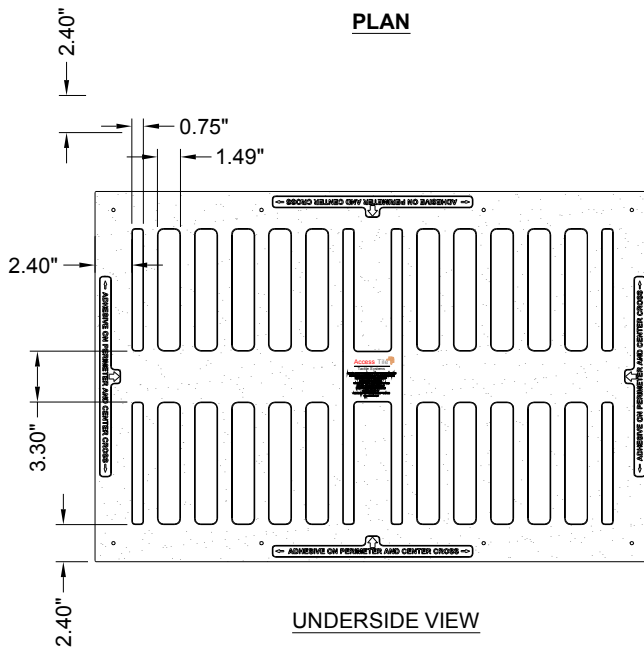
www.AccessTile.com 888-679-4022



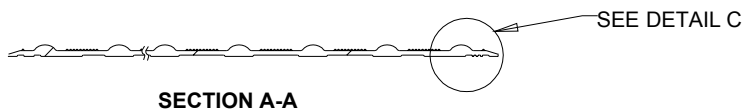
**PLAN**



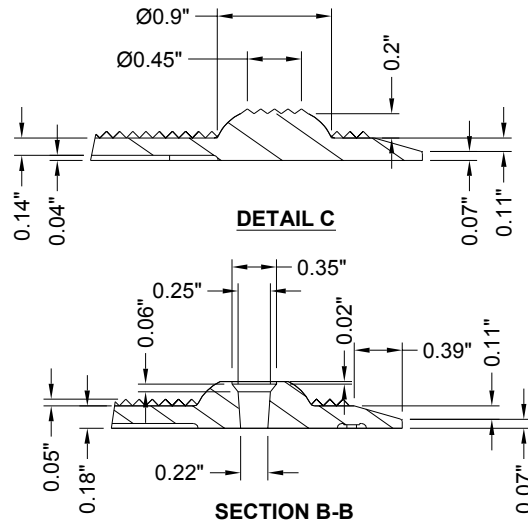
**DETAIL B**



**UNDERSIDE VIEW**



**SECTION A-A**



**DETAIL C**

**SECTION B-B**



**DETAIL A**

www.AccessTile.com

Access Products Inc

© Access Products Inc.  
ACCESS, ACCESS TILE, ACCESS AND THE THREE AND TWO  
DIMENSIONAL DESIGNS ON THE TILE BETWEEN DOMES  
AND ON DOMES ARE TRADEMARKS OF  
ENGINEERED SYSTEMS INC.  
PATENTS PENDING IN THE UNITED STATES,  
CANADA AND INTERNATIONALLY  
MANUFACTURED AND DISTRIBUTED  
UNDER LICENSE BY  
ACCESS WORLD PRODUCTS INCORPORATED  
www.accesstile.com  
© KENNETH E.  
SZEKELY

**MATERIAL LIST**

ITEM	DESCRIPTION	PART NO.	QTY
1	ACCESS TILE	ACC-S-2X3	1
2	Tek™ ANCHOR	ACC-S-ANCH	B
3	TACTILE BOND AND SEAL	TBS-010	1 ea

NOTE: FASTENERS AND 1 TUBE OF TACTILE BOND AND SEAL ARE INCLUDED WITH TILE

**REFERENCE DRAWINGS**

DWG. NO.	DESCRIPTION

No.	DATE	REVISION	APPR.

SCALE 1"=1'-0" U.N.D. FULL SIZE ONLY

DESIGNED KES DATE 10/09/2008

DRAWN RWO DATE 10/15/2008

CHECKED KES

PROJECT MANAGER

TRADE DETECTABLE WARNING SURFACE PART NO. ACC-S-2X3

MATERIAL POLYMER COMPOSITE

SUBJECT **ACCESS TILE®**  
TRUNCATED DOME, DETECTABLE  
WARNING TACTILE SURFACE

PROJECT **ACCESS TILE®**  
TRUNCATED DOME, DETECTABLE  
WARNING TACTILE SURFACE  
2X3 SURFACE APPLIED  
INLINE DOME TILE DRAWING.

DRAWING NO. ACC-S-2X3 REV. NO. Ø