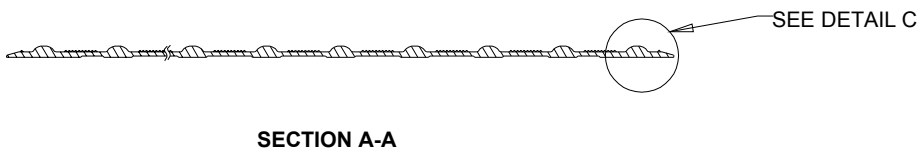
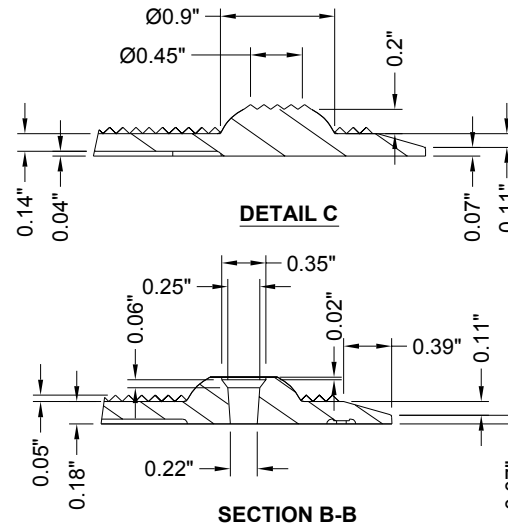
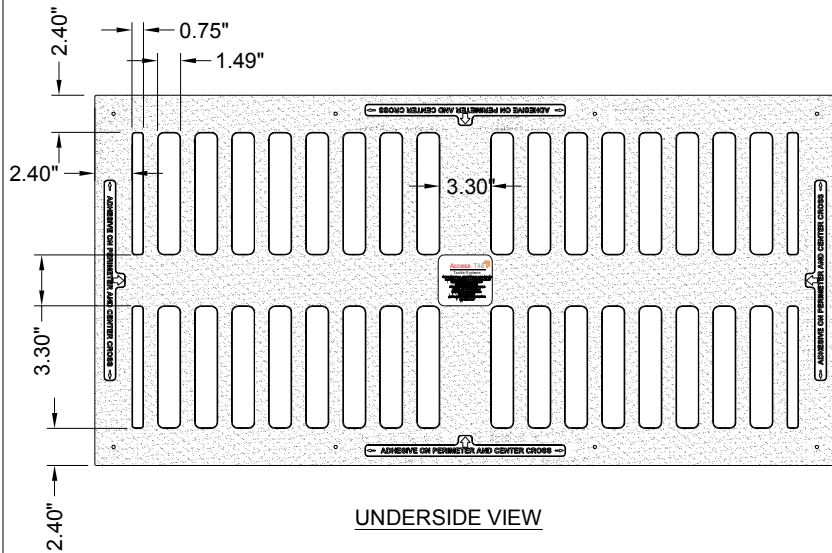
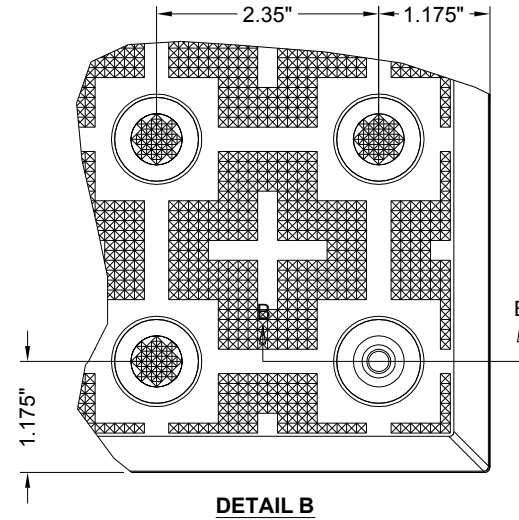
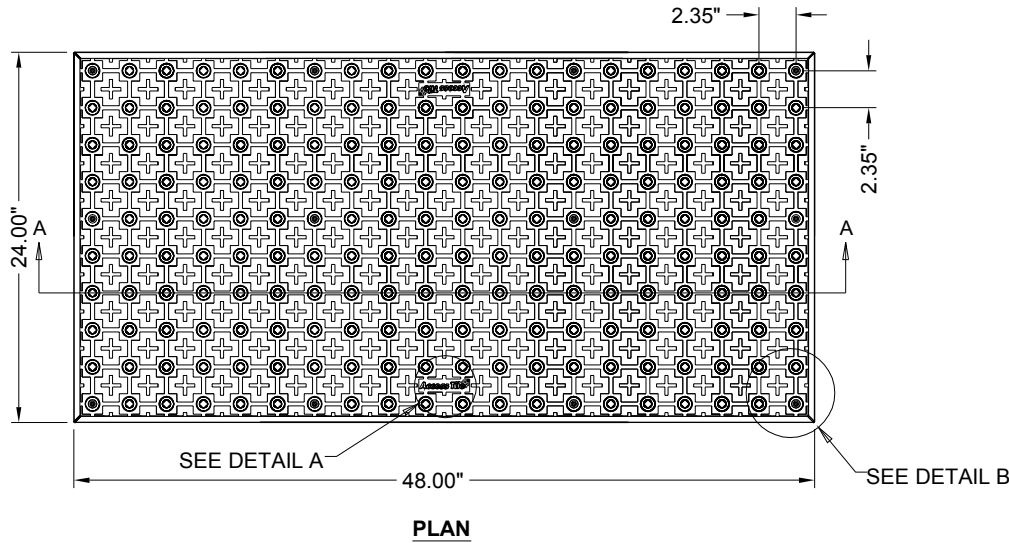


2'X4'

**SURFACE APPLIED
2.35" DOME SPACING**

www.AccessTile.com 888-679-4022



www.AccessTile.com

Access Products Inc

© Access Products Inc. ACCESS, ACCESS TILE, ACCESS+ AND THE THREE AND TWO DIMENSIONAL DESIGNS ON THE TILE BETWEEN DOMES AND ON DOMES ARE TRADEMARKS OF ENGINEERED SYSTEMS INC. PATENTS PENDING IN THE UNITED STATES, CANADA AND INTERNATIONALLY. MANUFACTURED AND DISTRIBUTED UNDER LICENSE BY ACCESS WORLD PRODUCTS INCORPORATED www.accessile.com © KENNETH E. SZEKELY

| MATERIAL LIST | | | |
|---------------|-----------------------|------------|------|
| ITEM | DESCRIPTION | PART NO. | QTY |
| 1 | ACCESS TILE | ACC-S-2X4 | 1 |
| 2 | Tek™ ANCHOR | ACC-S-ANCH | 11 |
| 3 | TACTILE BOND AND SEAL | TBS-010 | 1 ea |

NOTE: FASTENERS AND 1 TUBE OF TACTILE BOND AND SEAL ARE INCLUDED WITH TILE

| REFERENCE DRAWINGS | | | |
|--------------------|-------------|--|--|
| DWG. NO. | DESCRIPTION | | |
| | | | |
| | | | |
| | | | |
| | | | |

| No. | DATE | REVISION | APPR. |
|-----|------|----------|-------|
| | | | |
| | | | |
| | | | |

SCALE 1"=1'-0" U.N.O. FULL SIZE ONLY

| | | | |
|--|----------------------------|----------|------------|
| DESIGNED | KES | DATE | 10/09/2008 |
| DRAWN | RWD | DATE | 10/15/2008 |
| CHECKED | KES | | |
| PROJECT MANAGER | | | |
| TRADE | DETECTABLE WARNING SURFACE | PART NO. | ACC-S-2X4 |
| MATERIAL POLYMER COMPOSITE | | | |
| SUBJECT | | | |
| ACCESS TILE® | | | |
| TRUNCATED DOME, DETECTABLE WARNING TACTILE SURFACE | | | |
| PROJECT | | | |
| ACCESS TILE® | | | |
| TRUNCATED DOME, DETECTABLE WARNING TACTILE SURFACE 2X4 SURFACE APPLIED INLINE DOME TILE DRAWING. | | | |
| DRAWING NO. | ACC-S-2X4 | | REV. NO. |
| | | | ∅ |