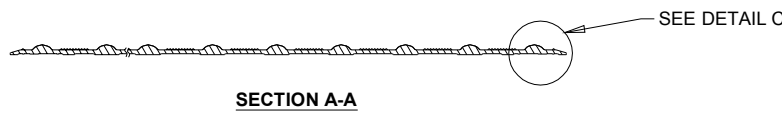
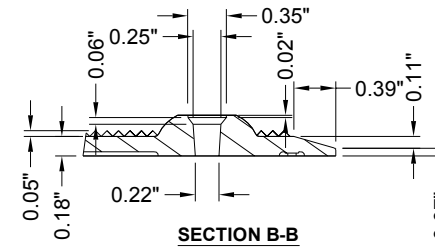
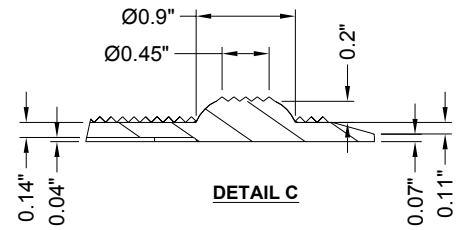
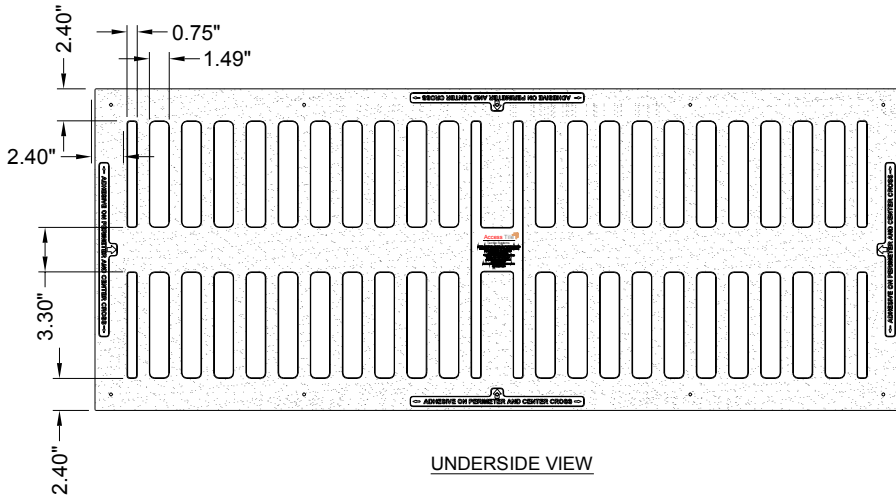
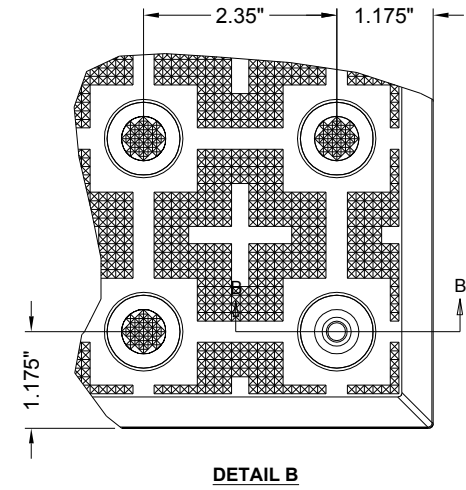
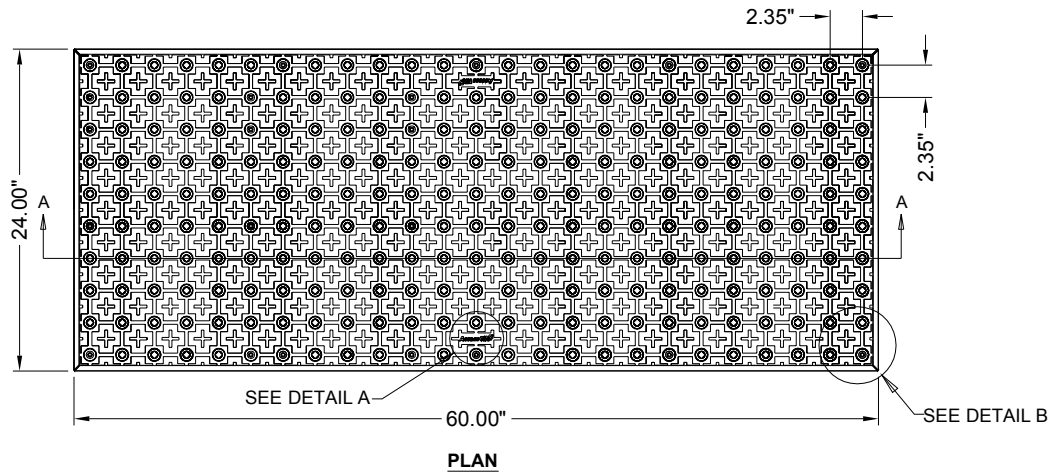


2'X5'

**SURFACE APPLIED
2.35" DOME SPACING**

www.AccessTile.com 888-679-4022



www.AccessTile.com

Access Products Inc

© Access Products Inc. ACCESS, ACCESS TILE, ACCESS AND THE THREE AND TWO DIMENSIONAL DESIGNS ON THE TILE BETWEEN DOMES AND ON DOMES ARE TRADEMARKS OF ENGINEERED SYSTEMS INC. PATENTS PENDING IN THE UNITED STATES, CANADA AND INTERNATIONALLY MANUFACTURED AND DISTRIBUTED UNDER LICENSE BY ACCESS WORLD PRODUCTS INCORPORATED www.accesstile.com

© KENNETH E. SZEKELY

MATERIAL LIST

ITEM	DESCRIPTION	PART NO.	QTY
1	ACCESS TILE	ACC-S-2X5	1
2	Tek™ ANCHOR	ACC-S-ANCH	10
3	TACTILE BOND AND SEAL	TBS-010	1 ea

NOTE: FASTENERS AND 1 TUBE OF TACTILE BOND AND SEAL ARE INCLUDED WITH TILE

REFERENCE DRAWINGS

DWG. NO.	DESCRIPTION

No.	DATE	REVISION	APPR.

SCALE 1"=1'-0" U.N.D. FULL SIZE ONLY

DESIGNED	DATE
KES	10/09/2008

DRAWN	DATE
RWO	10/15/2008

CHECKED KES

PROJECT MANAGER

TRADE	PART NO.
DETECTABLE WARNING SURFACE	ACC-S-2X5

MATERIAL POLYMER COMPOSITE

SUBJECT **ACCESS TILE®**
TRUNCATED DOME, DETECTABLE WARNING TACTILE SURFACE

PROJECT **ACCESS TILE®**
TRUNCATED DOME, DETECTABLE WARNING TACTILE SURFACE
2X5 SURFACE APPLIED
INLINE DOME TILE DRAWING.

DRAWING NO.	REV. NO.
ACC-S-2X5	Ø