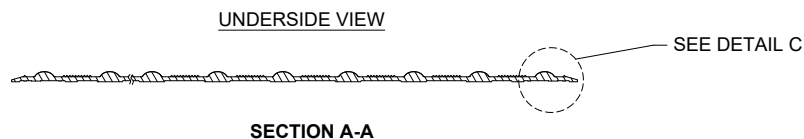
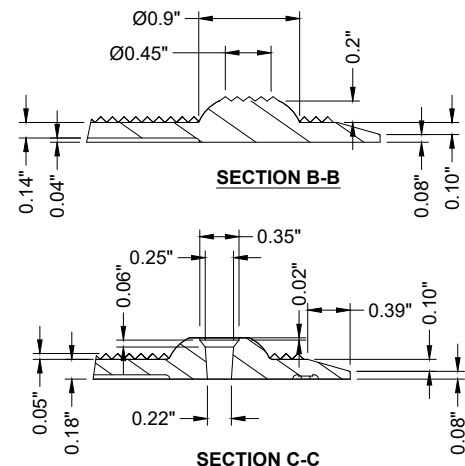
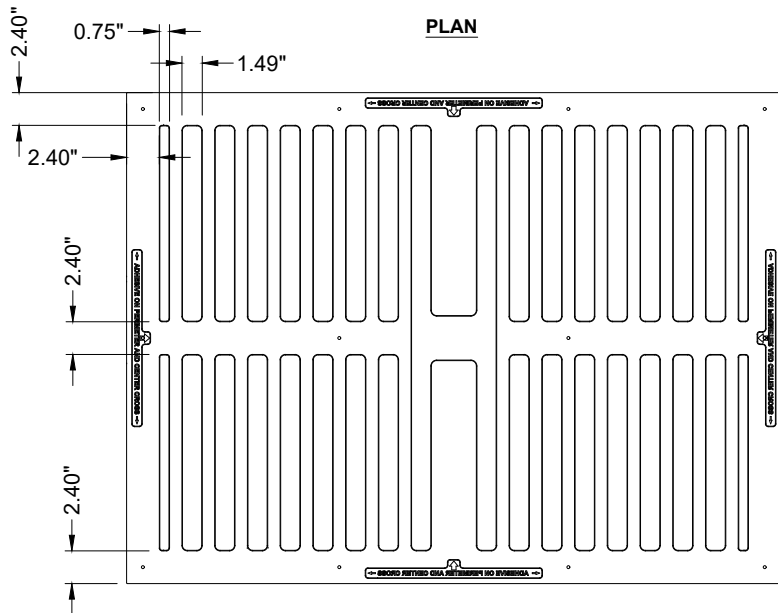
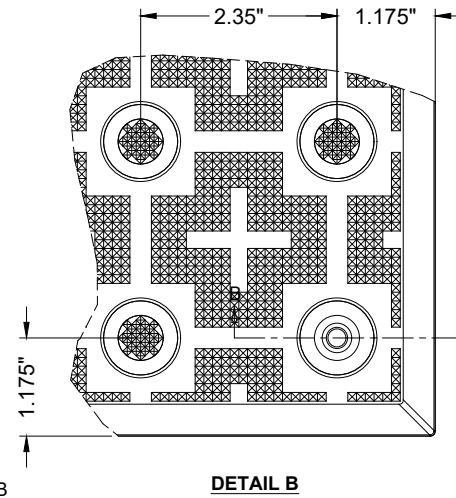
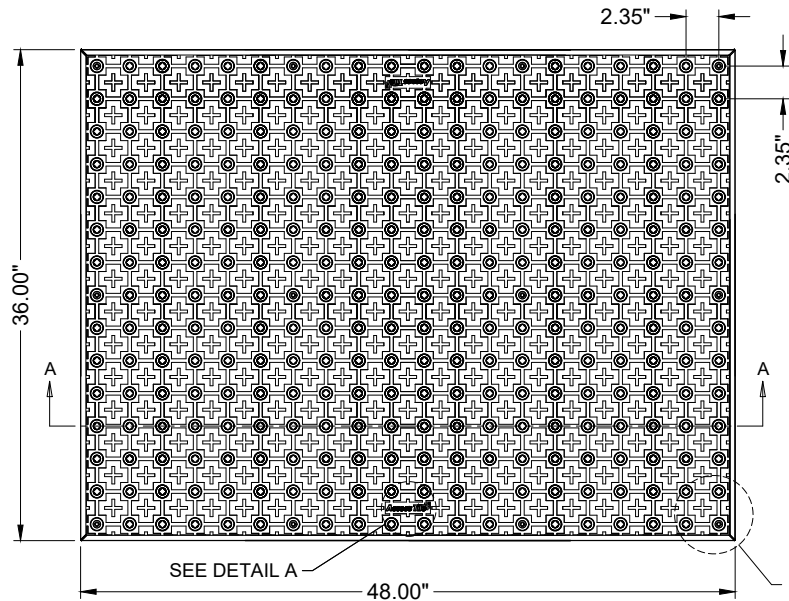


3'X4'

**SURFACE APPLIED  
2.35" DOME SPACING**



surewerx.com



**MATERIAL LIST**

ITEM	DESCRIPTION	PART NO.	QTY
1	ACCESS TILE	ACC-S-3X4	1
2	AXIUS ANCHOR	ACC-S-ANCH	12
3	TACTILE BOND AND SEAL	TBS-010	1 ea

NOTE: FASTENERS AND 1 TUBE OF TACTILE BOND AND SEAL ARE INCLUDED WITH TILE

**REFERENCE DRAWINGS**

DWG. NO.	DESCRIPTION

No.	DATE	REVISION	APPR.

SCALE N.T.S.

DESIGNED KES DATE

DRAWN RWO 07/15/2024

CHECKED KES

PROJECT MANAGER

TRADE DETECTABLE WARNING SURFACE PART NO. ACC-S-3X4

MATERIAL POLYMER COMPOSITE

SUBJECT **ACCESS TILE®**  
TRUNCATED DOME, DETECTABLE WARNING TACTILE SURFACE

PROJECT **ACCESS TILE®**  
TRUNCATED DOME, DETECTABLE WARNING TACTILE SURFACE  
3X4 SURFACE APPLIED  
INLINE DOME TILE DRAWING.

DRAWING NO. ACC-S-3X4 REV. NO. Ø