

# SURFACE APPLIED

## the most innovative retrofit system

Access Tile's Surface Applied tile is engineered to successfully upgrade any existing surface to comply with Federally mandated detectable warning requirements.

### ADA COMPLIANCE [www.accesstile.com/ada-compliance](http://www.accesstile.com/ada-compliance)

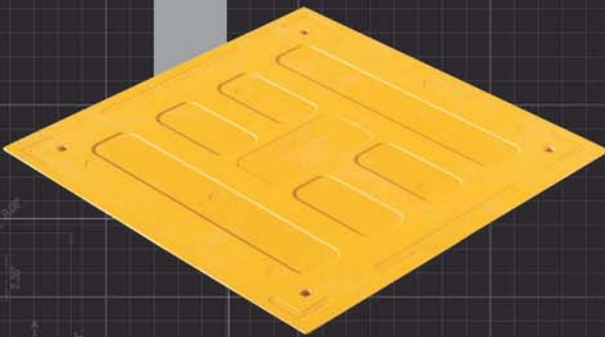
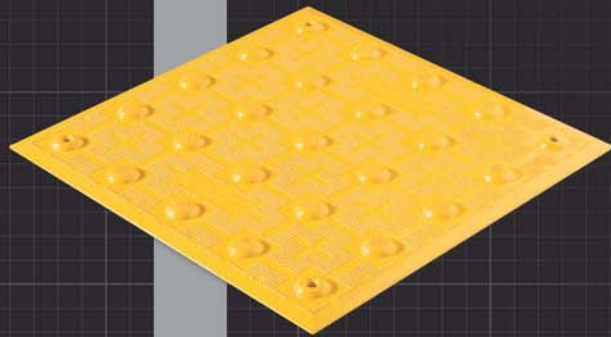
- 2.35" center-to-center, in-line dome spacing meets ADA Federal and State requirements
- Truncated dome size and spacing compliant with ADA Federal and State requirements, 0.9" base and 0.45" top diameter
- Fully complies with all ADA and OSHA requirements for surface height transitions to eliminate trip hazards
- Consistent dome spacing when tiles are adjoined (side-by-side or end-to-end)
- Wide in-line dome configuration facilitates a smooth rolling transition for strollers, wheelchairs and walkers

### ASTM & UL TESTING [www.accesstile.com/specifications](http://www.accesstile.com/specifications)

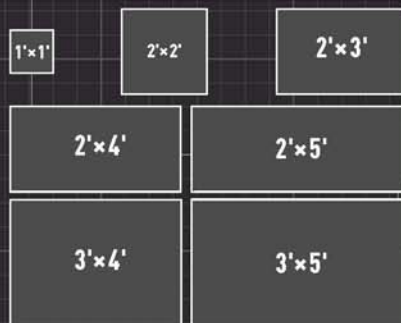
- Tensile Strength ASTM D 638
- Flexural Strength ASTM D 790
- Compressive Strength ASTM D 695
- Accelerated Weathering ASTM G 155
- Slip Resistance ASTM C 1028
- Flame Spread Index ASTM E 84
- Accelerated Aging (freeze thaw) D1037
- Linear Thermal Expansion ASTM D 696-03
- Tile Bond Strength ASTM C1583

### INTELLIGENT DESIGN FEATURES

- Audible detectability technology engineered for sound amplification
- Engineered load transfer design with bosses located directly under domes transfer loads directly to substrate
- Bevelled perimeter edge meets ADA vertical displacement requirements
- Strategically placed pre-formed fastener hole locations enhance installation integrity and provide easy installation
- Tiles shipped with color-matched fasteners
- Adhesive location identified on reverse side of tile for easy, error-free installation
- Tactile Bond&Seal is available through all our authorized distributors. The system is designed and tested to be both a structural adhesive and perimeter edge sealant.
- Interactive sizes – all tiles maintain pattern repeat when mounted side-to-side or top-to-bottom

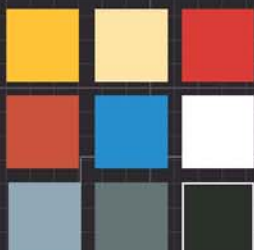


### PRODUCT SIZES\*



15' RADIUS CURVE

### STANDARD COLORS



\* OTHER CUSTOM SIZES AND COLORS MAY BE AVAILABLE