

ACO Sport®

System 2000

Slotted Running Track and Field Drainage System
Ideal for IAAF Tracks



ACO. creating

the future of drainage

The ACO Group

Founded in 1946, the ACO Group is a world leader in drainage technology. Climate change sets us a challenge to react effectively with innovative solutions to new environmental conditions. With its integrated approach, ACO provides systems for professional surface water drainage, efficient cleaning, and the controlled discharge or reuse of water.

Products include:

- surface water drainage
- oil, sediment, heavy metal and grease separators
- detention, retention and infiltration systems
- flow control release products

Major innovative strengths of the ACO Group are its continuous research & development and technical expertise in the processing of polymer concrete, plastics, cast iron, stainless steel and cement concretes.

ACO in the USA

ACO, Inc. was founded in Ohio, 1978. Since then, continuous growth in the USA has seen the company expand and build manufacturing facilities in Mentor, OH, and Casa Grande, AZ. The company has further locations in Phoenix, AZ, and Fort Mill, SC. Today, ACO USA has sales personnel across the country and an extensive distribution network through all states, the Caribbean and Central America.

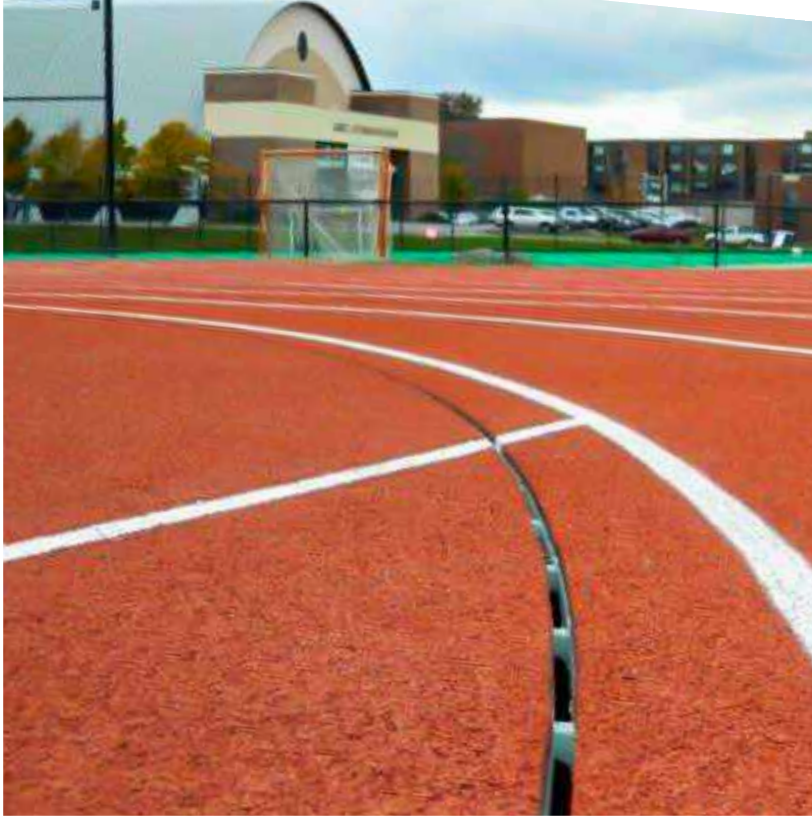
ACO Sport®

ACO Sport products were first used at the 1972 Munich Olympic Stadium. They are designed to maximize the functionality of the athletic facility without disrupting the performance of athletes and players. Products are available to meet the requirements of any athletic arena from high school fields to Olympic Stadiums.



ACO Sport System 2000

Sporting facilities use a wide variety of hard and soft surface materials. All external venues should incorporate surface drainage to protect these surfaces. System 2000 is the premier slotted running track drain system used at most high profile venues, including Olympic, professional and IAAF stadiums. The system is supplied in straight and radiused channels with a matching in-line catch basin to provide a continuous run around the entire running track. Increased depth provides maximum hydraulic performance.



System 2000 radius channels can be used in conjunction with System 4000 open channels if the track requirement is for slotted channels on the curves and grated channels on the straights.

System 2000 channels are ideal for use where synthetic track surface is used on both sides of the drain - such as curves of the track and high jump areas.

Popular applications include but are not limited to:

- Olympic stadiums
- College track & field
- Courts



Channels are available in 1 m (39.37") and 0.5 m (19.69") lengths and designed for use where a smooth transition from running track to sport field is required.

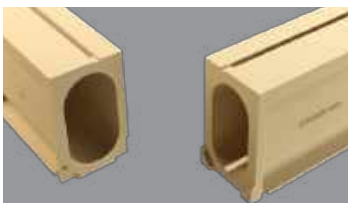
System 2000 Features & Benefits



Drainage Slot
0.5" ADA compliant drainage slot offset from the center of the channel



Polymer Concrete Surface
Exposed edges will not rust or discolor surrounding surfaces



Interconnecting Profiles
Channels fit together easily and securely via linking end profiles



Slot Bridge

Bridges at the center and end of each channel's slot to prevent closure



Directional Arrows

Arrows to ensure proper channel connection.

Side Wall Profile

Side pillars provide additional strength.



Installation Device

Recess on channel for use of installation device.

System 2000 Channels

	Part No.	Length in (mm)	Overall Depth in (mm)	Weight lbs
Straight	00784	39.37 (1000)	9.80 (249)	66.0
Radius	00786	39.37 (1000)	9.80 (249)	66.0

Catch Basin

	Part No.	Length in (mm)	Overall Depth in (mm)	Weight lbs
In-line Catch Basin	05620	19.69 (500)	23.00 (585)	59.0
Polymer Concrete Cover	00788	19.69 (500)	0.80 (20)	9.0
Plastic Trash Bucket	01498	17.60 (448)	-	1.1
6" Oval > Round Adapter	95140	-	-	1.1

ACO Sport Systems

Full Athletic Venue Coverage

System 7100

Safety Curb provides rubber topping that borders sports fields for containing loose surfacing such as sand, cinder, or clay in recreational parks and playgrounds.

System 2000/3000

Slotted channels provide discrete, unintrusive drainage for track and field arenas.

System 7200/7300

ACO's Modular Long Jump Pit Systems fulfill high school, college (NCAA), and international standards (IAAF).

Sand Traps prevent displaced sand from degrading surrounding track material.

System 4000

Grated channels are ideal for providing drainage around the perimeter of sports fields, courts, and bleachers.

ACO products support the ACO System Chain



Surface Water Management

- ACO Drain - Commercial Trench Drains
- ACO Infrastructure - Heavy Duty Drainage
- ACO Sport - Athletic Venue Drainage
- ACO StormBrixx - Geocellular Tanks
- ACO Aquaduct - Custom Drainage
- ACO Environment - Solid & Oil Separators
- ACO Wildlife - Guidance & Passage
- ACO Self - Garden & Landscape Drainage
- ACO UtilityDuct - Linear Ducting System

Building Drainage

- ACO Stainless - Stainless Trench Drains
- ACO BoxDrain - Stainless Floor Troughs
- ACO FloorDrain - Stainless Point Drains
- ACO Pipe - Stainless Push-fit Piping
- ACO ShowerDrain - Bathroom Drainage

ACO, Inc.

West Sales Office
825 W. Beechcraft Street
Casa Grande, AZ 85122
Tel: (520) 421-9988
Toll-Free: (888) 490-9552
Fax: (520) 421-9899

Northeast Sales Office
9470 Pinecone Drive
Mentor, OH 44060
Tel: (440) 639-7230
Toll-Free: (800) 543-4764
Fax: (440) 639-7235

Southeast Sales Office
4211 Pleasant Road
Fort Mill, SC 29708
Toll-Free: (800) 543-4764
Fax: (803) 802-1063

info@acousa.com
www.acousa.com

© April 2021 ACO, Inc.

All reasonable care has been taken in compiling the information in this document. All recommendations and suggestions on the use of ACO products are made without guarantee since the conditions of use are beyond the control of the company. It is the customer's responsibility to ensure that each product is fit for its intended purpose and that the actual conditions of use are suitable. ACO, Inc. reserves the right to change products and specifications without notice.

Print #SP200

ACO. creating
the future of drainage

