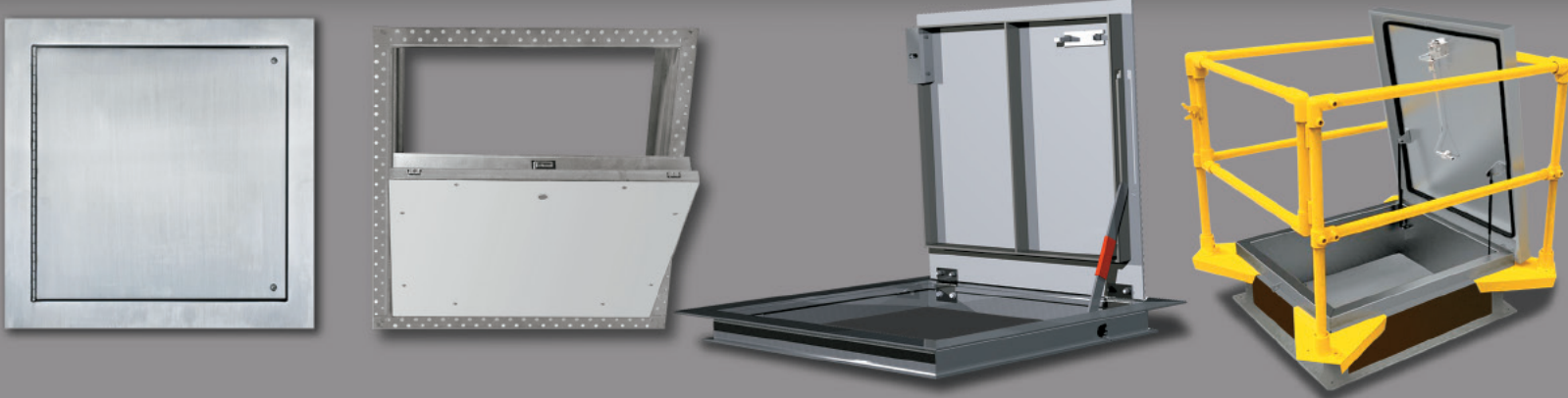




Access to Services through . . .
Walls • Ceilings • Floors • Roofs



ACUDOR Access Products Catalog

Effective date: March 2023

SECTION and Product INDEX PAGES

Flush Access Doors

UF-5000	2	
UF-5500	2	
ED-2002	2	
PA-3000	2	
DW-5040	3	
BP-2002	3	
UCSS	3	NEW

Drywall Recessed Access Doors

DW-5015	4	
DW-5058	4	
DW-5058-1	4	NEW
DW-5058-TD	4	NEW
DW-5058R	5	
BP-58	5	

Fire Rated Access Doors

FB-5060	6	
FB-5060-DW	6	
FB-5060-TD	6	
FW-5050	6	
FW-5050-DW	7	
FW-5050-UP	7	
FW-5015	7	
FWC-5015	7	

Specialty Access Doors

LT-4000	8	
SF-2000	8	
PS-5030	8	
WD-8000	8	
AS-9000	9	
AL-9500	9	NEW
ADWT	9	
ACF-2064	10	NEW
ACD-2064	10	NEW
VFCD	10	NEW

Specialty Access Doors - Recessed

AP-5010	11	
AT-5020	11	
TD-5025	11	NEW

Duct Access Doors

HD-5070	12	
CD-5080	12	
HD-5070-F	12	
CD-5080-F	12	
CD-5080-HP	13	
HDSS-6020	13	
CDSS-6030	13	
GDD	13	
WD-8000	14	
RD-5090	14	

Security Access Doors

MS-7000	14	
SD-6000	14	

Glass Fiber Doors

REINFORCED GYPSUM

GFRG-R	15
GFRG-S	15
GFRG-RH	15
GFRG-SH	15

REINFORCED CEMENT

GFRC-R	16
GFRC-S	16
GFRC-RH	16
GFRC-SH	16

Valve Boxes

ARVB	17
ASVB	17
AFVP	17

Roof Hatches

Ladder Access	18
Ship Stair - Access	18
Service Stair - Access	19
Equipment Access - Single Leaf	19
Equipment Access - Double Leaf	20
Security Roof Hatch	20
Domed Roof Hatch	20-21
RHA Electric Actuator Access	21
RHG Electric Actuator Access	21
Thermally Broken Access	21 NEW

Smoke Vents & Safety

Smoke Vent Single Leaf	22
Smoke Vent Double Leaf	22

Roof Hatch Safety & Ladders

RHSR Safety Rails	23
Fixed Ladder	23
Safety Assist Options	23

Floor Doors - Flush

FA-300	24
FA-300-R	24
FA-H20	24
FC-300	24
FC-H20	25
FRFD	25
AW-APS	25
A-FPS	25
FD-8060	26

Floor Doors - Recessed

FT-8040	27
FT-8050	27
FT-8080	27
FT-8080-1	27

Floor Doors - Emergency

EEH	28 NEW
-----	---------------

FLUSH Access Doors

UF-5000

UNIVERSAL FLUSH DOOR



UF-5000 STANDARD SIZES

INCH	mm
6 x 6	152 x 152
8 x 8	203 x 203
8 x 12	203 x 305
10 x 10	254 x 254
12 x 12	305 x 305
12 x 16	305 x 406
12 x 18	305 x 457
12 x 24	305 x 610
14 x 14	356 x 356
16 x 16	406 x 406
16 x 24	406 x 610
18 x 18	457 x 457
18 x 24	457 x 610
22 x 22	560 x 560
22 x 30	560 x 762
22 x 36	560 x 914
24 x 24	610 x 610
24 x 30	610 x 762
24 x 36	610 x 914
24 x 48	610 x 1220
30 x 30	762 x 762
36 x 36	914 x 914
36 x 48	914 x 1220
48 x 48	1220 x 1220

Application

- Installation in Drywall, Plaster, Masonry, Tile or any flush surface

Product Features

- Door panel has rounded safety corners providing an architecturally pleasing appearance
- One piece trim flange will not rack, sag or distortion
- Unique continuous concealed hinge will not bind

UF-5500

UNIVERSAL FLUSH DOOR



UF-5500 STANDARD SIZES

INCH	mm
6 x 6	152 x 152
8 x 8	203 x 203
12 x 12	305 x 305
15 x 15	381 x 381
18 x 18	457 x 457
24 x 24	610 x 610

Application

- Installation in Drywall, Plaster, Masonry, Tile or any flush surface

Product Features

- Drawn flanged door panel with rounded corners
- Concealed hinge and welds
- Galvanized steel material with white baked on polyester powder coat

ED-2002

UNIVERSAL FLUSH DOOR



ED-2002 STANDARD SIZES

INCH	mm
6 x 6	152 x 152
8 x 8	203 x 203
10 x 10	254 x 254
12 x 12	305 x 305
14 x 14	356 x 356
16 x 16	406 x 406
18 x 18	457 x 457
20 x 20	508 x 508
24 x 24	610 x 610
24 x 36	610 x 914
30 x 30	762 x 762
36 x 36	914 x 914

Application

- Installation in Drywall, Plaster, Masonry, Tile or any flush surface
- Economical and attractive access door for walls & ceilings

Product Features

- Formed door panel
- Concealed hinge

PA-3000

UNIVERSAL FLUSH DOOR - NON-RATED - Plastic Access Door



PA-3000 STANDARD SIZES

INCH	mm
4 x 6	101 x 152
6 x 9	152 x 229
8 x 8	203 x 203
12 x 12	305 x 305
14 x 14	356 x 356
14 x 29	358 x 737
18 x 18	457 x 457
22 x 22*	559 x 559
24 x 24*	610 x 610

* For wall installation only

Application

- Easy access to walls and ceilings
- Economical and attractive

Product Features

- High impact styrene plastic with U.V. stabilizers
- Hinged with a removable feature

DW-5040

UNIVERSAL FLUSH DOOR, for Drywall



DW-5040 STANDARD SIZES

INCH	mm
------	----

6 x 6	152 x 152
8 x 8	203 x 203
10 x 10	254 x 254
12 x 12	305 x 305
14 x 14	355 x 355
16 x 16	406 x 406
18 x 18	457 x 457
22 x 22	560 x 560
24 x 24	610 x 610
24 x 36	610 x 914
30 x 30	762 x 762
36 x 36	914 x 914

Application

- Designed specifically for installation in drywall walls and ceilings **after** the drywall has been installed

Product Features

- Formed door panel with flanges on four sides
- Unique concealed hinge, door flange is a perforated tapping bead with pre-punched holes

BP-2002

UNIVERSAL FLUSH DOOR



BP-2002 STANDARD SIZES

INCH	mm
------	----

8 x 8	203 x 203
12 x 12	305 x 305
16 x 16	406 x 406
18 x 18	457 x 457
24 x 24	610 x 610

Application

- Unique beveled door panel overlaps the frame
- Economical and attractive access door for walls & ceilings ideally suited for apartments, condominiums and office buildings

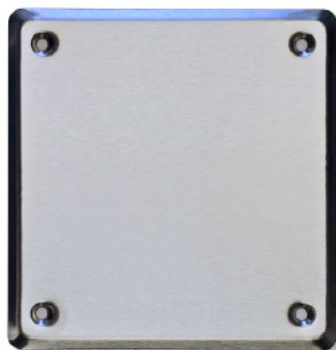
Product Features

- Concealed hinge

UCSS

UNIVERSAL FLUSH DOOR - COVER

NEW PRODUCT



UCSS STANDARD SIZES

INCH	mm
------	----

6 x 6	152 x 152
8 x 8	203 x 203
10 x 10	254 x 254
12 x 12	305 x 305
14 x 14	356 x 356
16 x 16	406 x 406
18 x 18	457 x 457
24 x 24	610 x 610

Application

- Provides quick, convenient and architecturally pleasing covers to plumbing clean-outs in wet areas

Product Features

- Corrosion resistant Stainless Steel ensures long life
- Architecturally pleasing appearance in satin brush finish
- Bevelled edges with rounded corners assures safe installation
- Flush counter-sunk mounting screws

Drywall Recessed Access Doors

DW-5015

RECESSED ACCESS DOOR



DW-5015 STANDARD SIZES

INCH	mm
8 x 8	203 x 203
12 x 12	305 x 305
18 x 18	457 x 457
24 x 24	610 x 610
24 x 36	610 x 914

8 x 8	203 x 203
12 x 12	305 x 305
18 x 18	457 x 457
24 x 24	610 x 610
24 x 36	610 x 914

Application

- For installation in drywall surfaces when it is required to conceal the door panel

Product Features

- Recessed 5/8" to receive drywall
- Door flange is a textured galvanized steel tapping bead with pre-punched holes

DW-5058

RECESSED ACCESS DOOR FOR 5/8" DRYWALL, *Drywall Panel Door*



DW-5058 STANDARD SIZES

INCH	mm
8 x 8	203 x 203
12 x 12	305 x 305
16 x 16	406 x 406
18 x 18	457 x 457
24 x 24	610 x 610
24 x 36	610 x 914

8 x 8	203 x 203
12 x 12	305 x 305
16 x 16	406 x 406
18 x 18	457 x 457
24 x 24	610 x 610
24 x 36	610 x 914

For wall installation, hinge should be located at bottom

Application

- Designed to provide access in walls and ceilings, while maintaining an invisible, architecturally pleasing appearance

Product Features

- Designed for installation in 5/8" drywall
- Aluminum Extrusion Door & Frame
- Powder Painted
- Dust seal gasket
- Concealed Touch latch

DW-5058-1

RECESSED ACCESS DOOR FOR 1/2" DRYWALL, *Drywall Panel Door*

NEW PRODUCT



DW-5058-1 STANDARD SIZES

INCH	mm
8 x 8	203 x 203
12 x 12	305 x 305
16 x 16	406 x 406
18 x 18	457 x 457
24 x 24	610 x 610
24 x 36	610 x 914

8 x 8	203 x 203
12 x 12	305 x 305
16 x 16	406 x 406
18 x 18	457 x 457
24 x 24	610 x 610
24 x 36	610 x 914

For wall installation, hinge should be located at bottom

Application

- Designed to provide access in walls and ceilings, while maintaining an invisible, architecturally pleasing appearance

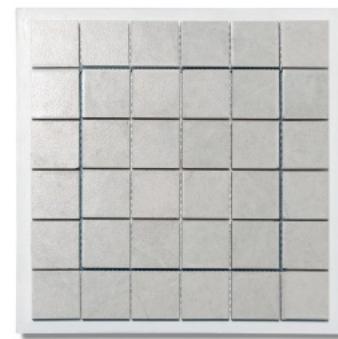
Product Features

- Designed for installation in 1/2" drywall
- Aluminum Extrusion Door & Frame
- Powder Painted
- Dust seal gasket
- Concealed Touch latch

DW-5058-TD

RECESSED ACCESS DOOR, *Panel Door for Tile*

NEW PRODUCT



DW-5058-TD STANDARD SIZES

INCH	mm
8 x 8	203 x 203
12 x 12	305 x 305
16 x 16	406 x 406
18 x 18	457 x 457
24 x 24	610 x 610
24 x 36	610 x 914

8 x 8	203 x 203
12 x 12	305 x 305
16 x 16	406 x 406
18 x 18	457 x 457
24 x 24	610 x 610
24 x 36	610 x 914

Application

- Designed to provide access in tiled walls, while maintaining an invisible, architecturally pleasing appearance

Product Features

- Designed for installation in 5/8" cement board
- Aluminum Extrusion Door & Frame
- Dust seal gasket
- Concealed Touch latch

DW-5058R

RECESSED ACCESS DOOR, Drywall (Round) Panel Door



DW-5058R STANDARD SIZES

Door Diam.

INCH	mm
12	305
16	406
18	457
24	610

Application

- Designed to provide access in walls and ceilings, while maintaining an invisible, architecturally pleasing appearance

Product Features

- Designed to accommodate 5/8" drywall.
- Standard with a touch latch feature

BP-58

BAUCO PLUS, Drywall Panel Door



BP-58 STANDARD SIZES

INCH	mm
12 x 12	305 x 305
18 x 18	457 x 457
24 x 24	610 x 610
24 x 36	610 X 914

Application

- Designed to provide access in walls and ceilings, while maintaining an invisible, architecturally pleasing appearance

Product Features

- Door panel is supplied with one layer of 5/8" drywall (or 1/2")
- Removable door panel
- Concealed hinge

FB-5060

FIRE-RATED UNINSULATED



FB-5060 STANDARD SIZES

INCH	mm
8 x 8	203 x 203
10 x 10	254 x 254
12 x 12	305 x 305
14 x 14	356 x 356
16 x 16	406 x 406
18 x 18	457 x 457
22 x 30	559 x 762
22 x 36	559 x 914
24 x 24	610 x 610
24 x 36	610 x 914
24 x 48	610 x 1219
30 x 30	762 x 762
36 x 36	914 x 914
36 x 48	914 x 1220

Application

- For wall applications.
- Designed to maintain continuity in a 2 hour fire rated wall, when temperature is not a factor

Product Features

- Concealed hinge
- Self-closing
- Self-Latching
- Inside latch release
- Available with a removable door panel



FB-5060-DW

FIRE RATED UNINSULATED - for Drywall walls



FB-5060-DW STANDARD SIZES

INCH	mm
8 x 8	203 x 203
10 x 10	254 x 254
12 x 12	305 x 305
14 x 14	355 x 355
16 x 16	406 x 406
18 x 18	457 x 457
22 x 30	559 x 762
22 x 36	559 x 914
24 x 24	610 x 610
24 x 36	610 x 914
24 x 48	610 x 1219
30 x 30	762 x 762
36 x 36	914 x 914
36 x 48	914 x 1220

Application

- For drywall walls applications.
- Designed to maintain continuity in a 2 hour fire rated wall, when temperature rise is not a factor

Product Features

- Concealed hinge
- Self-closing
- Self-Latching
- Drywall tapping bead
- Inside latch release
- Available with a removable door panel



FB-5060-TD

FIRE RATED UNINSULATED, Recessed for Tile Walls



FB-5060-TD STANDARD SIZES

INCH	mm
12 x 12	305 x 305
16 x 16	406 x 406
18 x 18	457 x 457
24 x 24	610 x 610
24 x 36	610 x 914

Application

- Designed for use in tiled walls
- Used whenever it is necessary to provide access in fire rated walls, when temperature rise **is not** a factor

Product Features

- Recessed 1/2" and is lined with self-furring lath
- Designed to maintain continuity in a 2-hour fire barrier wall



FW-5050

FIRE RATED INSULATED ACCESS DOOR, for walls and ceilings



FW-5050 STANDARD SIZES

INCH	mm
8 x 8	203 x 203
10 x 10	254 x 254
12 x 12	305 x 305
14 x 14	356 x 356
16 x 16	406 x 406
18 x 18	457 x 457
22 x 30	559 x 762
22 x 36	559 x 914
24 x 24	610 x 610
24 x 36	610 x 914
24 x 48	610 x 1219
30 x 30	762 x 762
36 x 36	914 x 914
36 x 48	914 x 1220

Application

- For all types of walls and ceilings
- This door should be used in walls when temperature rise or heat transmission **is** a factor.

Product Features

- Insulated door panel
- Concealed hinge
- Self-closing
- Self-Latching
- Inside latch release



FW-5050-DW

FIRE-RATED for Drywall - Insulated



FW-5050-DW STANDARD SIZES

INCH	mm
8 x 8	203 x 203
10 x 10	254 x 254
12 x 12	305 x 305
14 x 14	356 x 356
16 x 16	406 x 406
18 x 18	457 x 457
22 x 30	559 x 762
22 x 36	559 x 914
24 x 30	610 x 762
24 x 24	610 x 610
24 x 36	610 x 914
24 x 48	610 x 1219
30 x 30	762 x 762
36 x 36	914 x 914
36 x 48	914 x 1220

Non Rated for Ceiling



Application

- For drywall, walls and ceilings with galvanized steel drywall taping bead flange. For when temperature rise or heat transmission is a factor.

Product Features

- Insulated door panel
- Concealed hinge
- Self-Latching
- Inside latch release
- Drywall taping bead flange
- Self-closing

FW-5050-UP

FIRE RATED INSULATED Upswing Door for Ceilings



FW-5050-UP STANDARD SIZES

INCH	mm
22 x 30	559 x 762
22 x 36	559 x 914
24 x 24	610 x 610
24 x 36	610 x 914



Application

- An insulated, fire rated access door for inward opening in ceilings

Product Features

- For fire rated ceilings, this door has been approved by Warnock Hersey International for 3 hours (max. size to 24"x 36")
- Insulated Door Panel
- Self-Closing
- Self-Latching
- Inside Latch Release

FW-5015

FIRE RATED ACCESS DOOR, Recessed for Drywall walls



FW-5015 STANDARD SIZES

INCH	mm
12 x 12	305 x 305
16 x 16	406 x 406
18 x 18	457 x 457
24 x 24	610 x 610
24 x 36	610 x 914



Application

- For installation in drywall walls requiring concealing of the door panel consistent to surroundings
- For use in walls, fire-rated for up to 90-minutes with a temperature rise of max 250°C (450°F) over 30 minutes

Product Features

- Recessed reinforced door fitted with 5/8" Fire-rated drywall.
- Concealed hinge & self-centering device ensures seamless appearance in walls
- Self-closing & self-latching door mechanism
- Perforated Frame ensures trouble-free application of skim coat to edge of the door
- Zinc coated steel provides superior corrosion resistance
- Testing standards UL 10(b) and ULC S104

FWC-5015

FIRE RATED ACCESS DOOR, Recessed for Drywall Ceilings



Drywall insert included

FWC-5015 STANDARD SIZES

INCH	mm
12 x 12	305 x 305
16 x 16	406 x 406
18 x 18	457 x 457
24 x 24	610 x 610
24 x 36	610 x 914



Application

- For installation in drywall ceilings requiring concealing of the door panel consistent to surroundings
- For use in Fire Rated Ceilings that needs tested and certified doors having Fire Resistance Rating of 90 minutes.

Product Features

- Recessed reinforced insulated door fitted with 5/8" Fire-rated drywall.
- Concealed hinge & self-centering device ensures seamless appearance in ceiling
- Self-closing & self-latching door mechanism
- Perforated Frame ensures trouble-free application of skim coat to edge of the door
- Zinc coated steel provides superior corrosion resistance
- Testing Standards — CAN ULC S101-14, ASTM E119-16 and NFPA 251

LT-4000

SPECIALTY DOORS, *Lightweight Aluminum*



LT-4000 STANDARD SIZES

INCH	mm
8 x 8	203 x 203
10 x 10	254 x 254
12 x 12	305 x 305
14 x 14	355 x 355
16 x 16	406 x 406
18 x 18	457 x 457
24 x 24	610 x 610
24 x 36	610 x 914
24 x 48	610 x 1220
30 x 30	762 x 762
36 x 36	914 x 914
36 x 48	914 x 1220
48 x 48	1220 x 1220
60 x 48	1524 x 1220
72 x 48	1830 x 1220

Application

- Lightweight aluminum access door for walls and ceilings

Product Features

- Mitered aluminum frame provides an architecturally pleasing appearance
- Aluminum door panel is lined with 3/4" polystyrene insulation
- All aluminum construction is ideal for exterior applications, also specific interior applications where corrosion or moisture is a concern
- Gasketing between the door and frame

SF-2000

SURFACE MOUNTED ACCESS DOOR



SF-2000 STANDARD SIZES

INCH	mm
8 x 8	203 x 203
12 x 12	305 x 305
16 x 16	406 x 406
24 x 24	610 x 610

Application

- An innovative surface mounted access door for all types of walls and ceilings

Product Features

- An exposed continuous piano hinge allows the door panel to open to 175 degrees
- There is no frame to extend into the wall or ceiling
- Perfect for access to odd size openings

PS-5030

FLUSH ACCESS DOOR FOR PLASTER WALLS & CEILINGS



PS-5030 STANDARD SIZES

INCH	mm
6 x 6	152 x 152
8 x 8	203 x 203
10 x 10	254 x 254
12 x 12	305 x 305
14 x 14	355 x 355
16 x 16	406 x 406
18 x 18	457 x 457
22 x 22	560 x 560
24 x 24	610 x 610
24 x 36	610 x 914

Application

- Installation in plaster walls and ceilings, before the plaster is applied

Product Features

- An expansion casing bead with 3" wide galvanized lath
- Concealed continuous hinge

WD-8000

DUCT & SPECIALTY DOORS WALK THROUGH DOOR



WD-8000 STANDARD SIZES

INCH	mm
24 x 36	610 x 914
24 x 48	610 x 1219
24 x 60	610 x 1524
24 x 72	610 x 1829
30 x 36	762 x 914
30 x 48	762 x 1219
30 x 60	762 x 1524
30 x 72	762 x 1829

Application

- Designed to provide convenient walk through access to duct work interiors & air handling units
- Low to medium pressure systems and plenums

Product Features

- Heavy duty construction, along with a continuous hinge and compression handles
- Optional Features: Removable Door Panel / Vision Panel / High Pressure Units / Key Operated Handles

Specialty Access Doors

AS-9000

SPECIALTY DOORS, *Gasketed Access Door*



AS-9000 STANDARD SIZES

INCH	mm
12 x 12	305 x 305
16 x 16	406 x 406
18 x 18	457 x 457
24 x 24	610 x 610
24 x 36	610 x 914

* This door has not been tested for air penetration.
(For a tested airtight access door, refer to ADWT model).

Application

- Designed to provide a gasketed fit in all types of walls and ceilings
- This door is commonly used in clean rooms, laboratories, operating rooms, etc.

Product Features

- Gasketed access door
- Formed door panel with reinforced edges and a concealed hinge, along with open cell gasket between the door and frame

AL-9500

SPECIALTY DOORS, *Anti Ligature Access Door*

NEW PRODUCT



AL-9500 STANDARD SIZES

INCH	mm
12 x 12	305 x 305
16 x 16	406 x 406
18 x 18	457 x 457
24 x 24	609 x 609
24 x 36	609 x 914

Application

- Designed for Anti-Ligature Installation
- Designed to provide a fully gasketed fit in all types of walls and ceilings
- This door is commonly used in prisons, correctional facilities, psychiatric hospitals, etc.

Product Features

- Fully gasketed access door
- Formed door panel with reinforced edges and a concealed hinge, along with closed cell gasket between the door and frame
- Fully welded frame flange, radiused corners

ADWT

SPECIALTY DOORS, *Airtight/Watertight*



ADWT STANDARD SIZES

INCH	mm
12 x 12	305 x 305
14 x 14	355 x 355
18 x 18	457 x 457
24 x 24	610 x 610
24 x 36	610 x 914
30 x 30	762 x 762
30 x 48	762 x 1219
36 x 48	914 x 1219

Stainless Steel Door Shown

Application

- This access door is ideal for use in laboratories, clean rooms, operating rooms, etc. where an airtight/watertight seal is required

Product Features

- ADWT is a flush access door that has been tested for air infiltration, exfiltration and water penetration
- Door and Frame fully welded
- Continuous Bulb Trim Gasket
- Continuous Stainless Steel Piano Hinge
- Air Infiltration : Leakage ≤ 0.01 cfm/sq foot at 6.27 psf – ASTM E 283/E283M-19
- Water Penetration : No leakage at 15.04 psf – ASTM E 331-00(2016)

VFCD

VENT FAN COIL DOOR

NEW PRODUCT



Application

Provides unobstructed access and easy serviceability to Vertical Fan Coil Units in luxury Hotels, Condominiums, Apartments

Product Features

- Corrosion resistant Satin coat steel ensures long life
- Architecturally pleasing appearance with flush louvers
- Flush mount return air panel with convenient air filter replaceability
- Integrated louvers assure quiet operation

Specialty Access Doors

ACF-2064

SPECIALTY ACCESS DOOR, *Steel Flush Acoustical Access Door*

NEW PRODUCT



ACF-2064 STANDARD SIZES

INCH	mm
12 x 12	305 x 305
18 x 18	457 x 457
24 x 24	610 x 610
24 x 36	610 x 914

12 x 12	305 x 305
18 x 18	457 x 457
24 x 24	610 x 610
24 x 36	610 x 914

Application

This flush access door is ideal for use on Acoustical walls and ceilings where maintaining STC Rating (Sound Transmission Class) and OITC Rating (Outdoor-Indoor Transmission Class) is required

Product Features

- Zinc coated steel provides superior corrosion resistance
- Type 304 Stainless steel with #4 satin polish also available
- Tested and evaluated to ASTM: E90(09), ASTM: E413(16), ASTM: E1332(16) and certified to STC Rating 64 and OITC Rating 54

ACD-2064

SPECIALTY ACCESS DOOR, *Recessed Acoustical Access Door for Drywall*

NEW PRODUCT



ACD-2064 STANDARD SIZES

INCH	mm
12 x 12	305 x 305
18 x 18	457 x 457
24 x 24	610 x 610
24 x 36	610 x 914

12 x 12	305 x 305
18 x 18	457 x 457
24 x 24	610 x 610
24 x 36	610 x 914

Application

This recessed access door is ideal for use on Acoustical drywall walls and ceilings where maintaining STC (Sound Transmission Class) and OITC (Outdoor-Indoor Transmission Class) is required. The unique taping bead flange allows for a concealed finish.

Product Features

- Zinc coated steel provides superior corrosion resistance
- Drywall taping bead flange
- Recessed door fitted with 5/8" thick drywall, ensures finish similar to surrounding
- Tested and evaluated to ASTM: E90(09), ASTM: E413(16), ASTM: E1332(16) and certified to STC Rating 64 and OITC Rating 53



ACD-2064 Installed

AP-5010

RECESSED ACCESS DOOR, For Acoustical Plaster Walls And Ceilings



AP-5010 STANDARD SIZES

INCH	mm
12 x 12	305 x 305
18 x 18	457 x 457
24 x 24	610 x 610
24 x 36	610 x 914

Application

- Designed for use in acoustical plaster walls and ceilings

Product Features

- Door is recessed 5/8" and is lined with self-furring lath
- Expansion casing bead with 3" wide galvanized lath
- Concealed, pivoting rod type hinge

AT-5020

SPECIALTY DOORS, Recessed Access Door



AT-5020 STANDARD SIZES

INCH	mm
12 x 12	305 x 305
18 x 18	457 x 457
24 x 24	610 x 610
24 x 36	610 x 914

Application

- For flush installation in walls or ceilings when it is required to conceal the door panel

Product Features

- Door is recessed 1"

TD-5025

SPECIALTY ACCESS DOOR, Recessed Access Door for Tile and Marble

NEW PRODUCT



TD-5025 STANDARD SIZES

INCH	mm
12 x 12	300 x 300
14 x 14	350 x 350
16 x 16	400 x 400
18 x 18	450 x 450
24 x 24	610 x 610
24 x 36	610 x 914

Application

- This recessed access door is ideal for use on tiled and marbled walls
- Door accepts tiles/marbles with grout gaps, harmoniously blending with surroundings
- Installed door remains invisible ensuring architecturally pleasing appearance

Product Features

- Zinc coated steel provides superior corrosion resistance
- Concealed heavy duty hinge
- Recessed door accepts Tiles and Marbles of varied thicknesses
- Concealed Latch

Duct Access Doors

HD-5070

DUCT DOOR, for Sheet Metal Duct



HD-5070 STANDARD SIZES

INCH	mm	Duct opening
6 x 6	152 x 152	4.75" x 4.75"
8 x 8	203 x 203	6.75" x 6.75"
10 x 10	254 x 254	8.75" x 8.75"
12 x 12	304 x 304	10.75" x 10.75"
14 x 14	356 x 356	12.75" x 12.75"
16 x 16	406 x 406	14.75" x 14.75"
18 x 18	457 x 457	16.75" x 16.75"
20 x 20	508 x 508	18.75" x 18.75"
24 x 24	610 x 610	22.75" x 22.75"

Application

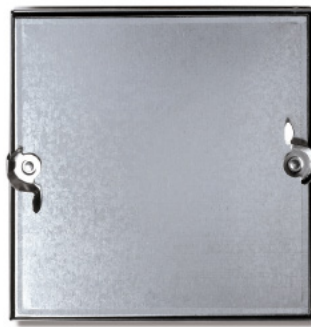
- Assures a tight seal without obstruction in the air system

Product Features

- Insulated door panel, along with the gasketing between the door and frame
- 5/8" notched knock over tabs on the inside of the frame provide for easy installation
- These doors are designed for use in LOW to medium pressure up to 3" static W.G.

CD-5080

DUCT DOOR, for Sheet Metal Duct



CD-5080 STANDARD SIZES

INCH	mm	Duct opening
6 x 6	152 x 152	4.75" x 4.75"
8 x 8	203 x 203	6.75" x 6.75"
10 x 10	254 x 254	8.75" x 8.75"
12 x 12	304 x 304	10.75" x 10.75"
14 x 14	356 x 356	12.75" x 12.75"
16 x 16	406 x 406	14.75" x 14.75"
18 x 18	457 x 457	16.75" x 16.75"
20 x 20	508 x 508	18.75" x 18.75"
24 x 24	610 x 610	22.75" x 22.75"

Application

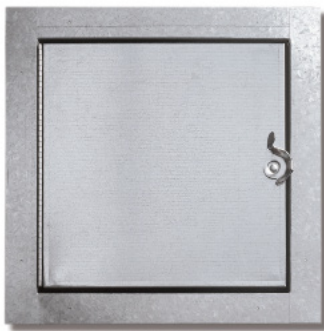
- Assures a tight seal without obstruction in the air system

Product Features

- These doors are designed for use in LOW to medium pressure up to 3" static W.G.
- 5/8" notched knock over tabs on the inside of the frame provide for easy installation

HD-5070-F

DUCT DOORS, for Ductboard/Fiberglass ducts



HD-5070-F STANDARD SIZES

INCH	mm
6 x 6	152 x 152
8 x 8	203 x 203
10 x 10	254 x 254
12 x 12	304 x 304
14 x 14	356 x 356
16 x 16	406 x 406
18 x 18	457 x 457
20 x 20	508 x 508
24 x 24	610 x 610

Application

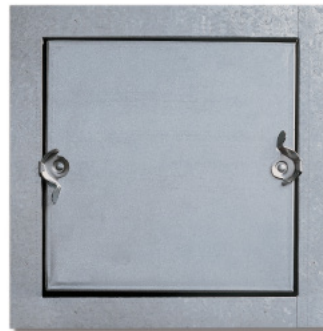
- Economical access to fiberglass ducts

Product Features

- These doors are for use in low to medium pressure fiberglass ducts
- Hinged door panel

CD-5080-F

DUCT DOOR, for Fiberglass Ducts



CD-5080-F STANDARD SIZES

INCH	mm
6 x 6	152 x 152
8 x 8	203 x 203
10 x 10	254 x 254
12 x 12	304 x 304
14 x 14	356 x 356
16 x 16	406 x 406
18 x 18	457 x 457
20 x 20	508 x 508
24 x 24	610 x 610

Application

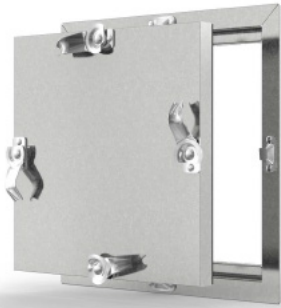
- Economical access to fiberglass ducts

Product Features

- These doors are for use in low to medium pressure fiberglass ducts
- Double cam - no hinge, removable door panel

CD-5080-HP

DUCT DOOR, for High Pressure Ducts



CD-5080-HP STANDARD SIZES

INCH	mm	Duct opening
6 x 6	152 x 152	4.75" x 4.75"
8 x 8	203 x 203	6.75" x 6.75"
10 x 10	254 x 254	8.75" x 8.75"
12 x 12	304 x 304	10.75" x 10.75"
14 x 14	356 x 356	12.75" x 12.75"
16 x 16	406 x 406	14.75" x 14.75"
18 x 18	457 x 457	16.75" x 16.75"
20 x 20	508 x 508	18.75" x 18.75"
24 x 24	610 x 610	22.75" x 22.75"

Application

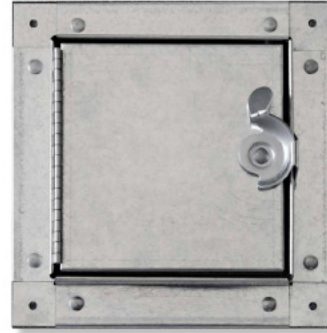
- Economical access to high pressure duct

Product Features

- These doors are for use in high pressure ducts up to 8" static pressure. Pressure rated to 8" W.G. with leakage no greater than 2 CFM per sq. ft. or less.
- 5/8" notched knock over tabs on the inside of the frame provide for easy installation

HDSS-6020

SELF STICK DUCT DOORS, for Sheet Metal Duct



HDSS-6020 STANDARD SIZES

INCH	mm	Duct opening
6 x 6	152 x 152	4.5 x 4.5
8 x 8	203 x 203	6.5 x 6.5
10 x 10	254 x 254	8.5 x 8.5
12 x 12	305 x 305	10.5 x 10.5
12 x 18	305 x 457	10.5 x 16.5
14 x 14	356 x 356	12.5 x 12.5
16 x 16	406 x 406	14.5 x 14.5
18 x 18	457 x 457	16.5 x 16.5
20 x 20	508 x 508	18.5 x 18.5
24 x 24	610 x 610	22.5 x 22.5

Application

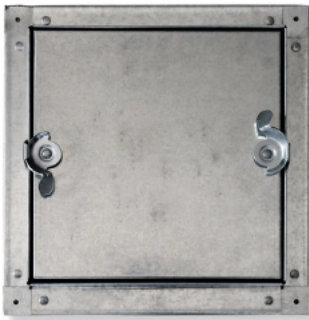
- Provides easy access to sheet metal ducts

Product Features

- Innovative self stick frame for easy installation
- Insulated door panel, single cam, hinged
- Tested to 10" SP with minimal leakage

CDSS-6030

SELF STICK DUCT DOORS, for Sheet Metal Duct



CDSS-6030 STANDARD SIZES

INCH	mm	Duct opening
6 x 6	152 x 152	4.5 x 4.5
8 x 8	203 x 203	6.5 x 6.5
10 x 10	254 x 254	8.5 x 8.5
12 x 12	305 x 305	10.5 x 10.5
12 x 18	307 x 457	10.5 x 16.5
14 x 14	356 x 356	12.5 x 12.5
16 x 16	406 x 406	14.5 x 14.5
18 x 18	457 x 457	16.5 x 16.5
20 x 20	508 x 508	18.5 x 18.5
24 x 24	610 x 610	22.5 x 22.5

Application

- Provides easy access to sheet metal ducts

Product Features

- Innovative self stick frame for easy installation
- Insulated door panel, double cam, non-hinged
- Tested to 10" SP with minimal leakage

GDD

DUCT DOOR, for Grease Ducts



Application

- Access door for installation into grease ducts
- This door meets or exceeds requirements of all mechanical codes

Product Features

- Bolt in unit easily installed into existing duct work
- Duct cutout template included
- No bolts penetrate to the interior of the duct
- Two handles for easy removal and installation

GDD STANDARD SIZES

MODEL NO.	PANEL OUTSIDE DIMENSION		PANEL HEIGHT	STUD HEIGHT	HOLE SIZE Inches (mm)		MTG STUDS (NUTS)
	A	B	C	D	E	F	
FGGD0707	10" (254mm)	10" (254mm)	.5" (13mm)	1" (25mm)	7" (178mm)	7" (178mm)	4
FGGD0712	10" (254mm)	15" (381mm)	.5" (13mm)	1" (25mm)	7" (178mm)	12" (305mm)	6
FGGD720	10" (254mm)	23" (584mm)	.5" (13mm)	1" (25mm)	7" (178mm)	20" (508mm)	10
FGGD1212	15" (381mm)	15" (381mm)	.5" (13mm)	1" (25mm)	12" (305mm)	12" (305mm)	8
FGGD1220	15" (381mm)	23" (584mm)	.5" (13mm)	1" (25mm)	12" (305mm)	20" (508mm)	14
FGGD1620	19" (483mm)	23" (584mm)	.5" (13mm)	1" (25mm)	16" (406mm)	20" (508mm)	16
FGGD2020	23" (584mm)	23" (584mm)	.5" (13mm)	1" (25mm)	20" (508mm)	20" (508mm)	16

WD-8000

DUCT & SPECIALTY DOORS WALK THROUGH DOOR



WD-8000 STANDARD SIZES

INCH	mm
24 x 36	610 x 914
24 x 48	610 x 1219
24 x 60	610 x 1524
24 x 72	610 x 1829
30 x 36	762 x 914
30 x 48	762 x 1219
30 x 60	762 x 1524
30 x 72	762 x 1829

Application

- Designed to provide convenient walk through access to duct work interiors & air handling units
- Low to medium pressure systems and plenums

Product Features

- Heavy duty construction, along with a continuous hinge and compression handles

Optional Features: Removable Door Panel / Vision Panel / High Pressure Units / Key Operated Handles

RD-5090

DUCT DOORS, *for round ducts*



RD-5090 STANDARD SIZES

INCH	mm
7 x 5	175 x 125
9 x 8	225 x 200
11 x 9	275 x 225
13 x 10	325 x 250
15 x 13	375 x 325
17 x 13	425 x 325
19 x 15	475 x 375
19 x 17	475 x 425
20 x 17	500 x 425

Application

- Economical access to round ducts

Product Features

- Pull and catch lock system
- Gasketing on the door assures a tight seal without obstruction in the air system

MS-7000

SECURITY DOORS, *for Medium Security*



MS-7000 STANDARD SIZES

INCH	mm
12 x 12	305 x 305
16 x 16	406 x 406
18 x 18	457 x 457
24 x 24	610 x 610
24 x 36	610 x 914
36 x 36	914 x 914

Application

- For use in medium security jails, prisons, psychiatric institutions, etc.
- Medium duty security access door

Product Features

- 12 Gauge door and frame
- A one piece trim flange and continuous concealed hinge
- Door panel features rounded safety corners

SD-6000

SECURITY DOORS, *High Security Access Door*



SD-6000 STANDARD SIZES

INCH	mm
12 x 12	305 x 305
16 x 16	406 x 406
18 x 18	457 x 457
24 x 24	610 x 610
24 x 36	610 x 914
36 x 36	914 x 914

Application

- Installation ideal for prisons, correctional facilities, housing projects etc.
- Heavy duty access door designed for use in high security areas

Product Features

- 10 Gauge Door
- Security butt hinges are surface welded to the door and frame
- A detention type deadbolt lock with paracentric key is standard

GFRG-R

GLASS FIBER REINFORCED GYPSUM RADIUS CORNER



Application

- Glass fiber reinforced gypsum, ceiling access doors are designed to blend seamlessly into drywall ceilings

Product Features

- Tapered edge for joint tape
- Easily textured
- Lightweight
- No cracking or shrinkage
- Mold and moisture resistant

GFRG-R STANDARD SIZES

Door Size INCH(mm)	Ceiling Opening INCH(mm)
9 x 9 (229 x 229)	15 x 15 (381 x 381)
12 x 12 (305 x 305)	18 x 18 (457 x 457)
16 x 16 (406 x 406)	22 x 22 (559 x 559)
18 x 18 (457 x 457)	24 x 24 (610 x 610)
24 x 24 (610 x 610)	30 x 30 (762 x 762)

Also Available GFRG-ROUND



GFRG-S

GLASS FIBER REINFORCED GYPSUM SQUARE CORNER



Application

- Glass fiber reinforced gypsum, ceiling access doors are designed to blend seamlessly into drywall ceilings

Product Features

- Tapered edge for joint tape
- Easily textured
- Lightweight
- No cracking or shrinkage
- Mold and moisture resistant

GFRG-S STANDARD SIZES

Door Size INCH(mm)	Ceiling Opening INCH(mm)
9 x 9 (229 x 229)	15 x 15 (381 x 381)
12 x 12 (305 x 305)	18 x 18 (457 x 457)
16 x 16 (406 x 406)	22 x 22 (559 x 559)
18 x 18 (457 x 457)	24 x 24 (610 x 610)
24 x 24 (610 x 610)	30 x 30 (762 x 762)

GFRG-RH

GLASS FIBER REINFORCED GYPSUM RADIUS CORNER - HINGED



Application

- Glass fiber reinforced gypsum, ceiling access doors are designed to blend seamlessly into drywall ceilings. The hinged feature allows this door to be installed in walls.

Product Features

- European Angle Hinges
- Tapered edge for joint tape
- Easily textured
- Lightweight
- No cracking or shrinkage
- Mold and moisture resistant

GFRG-RH STANDARD SIZES

Door Size INCH(mm)	Ceiling Opening INCH(mm)
9 x 9 (229 x 229)	15 x 15 (381 x 381)
12 x 12 (305 x 305)	18 x 18 (457 x 457)
16 x 16 (406 x 406)	22 x 22 (559 x 559)
18 x 18 (457 x 457)	24 x 24 (610 x 610)
24 x 24 (610 x 610)	30 x 30 (762 x 762)

GFRG-SH

GLASS FIBER REINFORCED GYPSUM SQUARE CORNER - HINGED



Application

- Glass fiber reinforced gypsum, ceiling access doors are designed to blend seamlessly into drywall ceilings. The hinged feature allows this door to be installed in walls.

Product Features

- European Angle Hinges
- Tapered edge for joint tape
- Easily textured
- Lightweight
- No cracking or shrinkage
- Mold and moisture resistant

GFRG-SH STANDARD SIZES

Door Size INCH(mm)	Ceiling Opening INCH(mm)
9 x 9 (229 x 229)	15 x 15 (381 x 381)
12 x 12 (305 x 305)	18 x 18 (457 x 457)
16 x 16 (406 x 406)	22 x 22 (559 x 559)
18 x 18 (457 x 457)	24 x 24 (610 x 610)
24 x 24 (610 x 610)	30 x 30 (762 x 762)

GFRC-R

GLASS FIBER REINFORCED CEMENT RADIUS CORNER



Application

- Glass fiber reinforced cement, ceiling access doors are designed to blend seamlessly into exterior soffits/ceilings

Product Features

- Portland Cement, Fiber, Post Consumer Recycled Glass
- Tapered edge for joint tape
- Easily textured
- Lightweight
- No cracking or shrinkage
- Mold and moisture resistant

Also Available GFRC-ROUND



GFRC-R STANDARD SIZES

Door Size INCH(mm)	Ceiling Opening INCH(mm)
9 x 9 (229 x 229)	15 x 15 (381 x 381)
12 x 12 (305 x 305)	18 x 18 (457 x 457)
16 x 16 (406 x 406)	22 x 22 (559 x 559)
18 x 18 (457 x 457)	24 x 24 (610 x 610)
24 x 24 (610 x 610)	30 x 30 (762 x 762)

GFRC-S

GLASS FIBER REINFORCED CEMENT SQUARE CORNER



Application

- Glass fiber reinforced cement, ceiling access doors are designed to blend seamlessly into exterior soffits/ceilings

Product Features

- Portland Cement, Fiber, Post Consumer Recycled Glass
- Easily textured
- Lightweight
- No cracking or shrinkage
- Mold and moisture resistant

GFRC-S STANDARD SIZES

Door Size INCH(mm)	Ceiling Opening INCH(mm)
9 x 9 (229 x 229)	15 x 15 (381 x 381)
12 x 12 (305 x 305)	18 x 18 (457 x 457)
16 x 16 (406 x 406)	22 x 22 (559 x 559)
18 x 18 (457 x 457)	24 x 24 (610 x 610)
24 x 24 (610 x 610)	30 x 30 (762 x 762)

GFRC-RH

GLASS FIBER REINFORCED CEMENT RADIUS CORNER - HINGED



Application

- Glass fiber reinforced cement, ceiling access doors are designed to blend seamlessly into exterior soffits/ceilings. The hinged feature allows this door to be installed in walls.

Product Features

- Portland Cement, Fiber, Post Consumer Recycled Glass
- European Angle Hinges
- Tapered edge for joint tape
- Easily textured
- Lightweight
- No cracking or shrinkage
- Mold and moisture resistant

GFRC-RH STANDARD SIZES

Door Size INCH(mm)	Ceiling Opening INCH(mm)
9 x 9 (229 x 229)	15 x 15 (381 x 381)
12 x 12 (305 x 305)	18 x 18 (457 x 457)
16 x 16 (406 x 406)	22 x 22 (559 x 559)
18 x 18 (457 x 457)	24 x 24 (610 x 610)
24 x 24 (610 x 610)	30 x 30 (762 x 762)

GFRC-SH

GLASS FIBER REINFORCED CEMENT SQUARE CORNER - HINGED



Application

- Glass fiber reinforced cement, ceiling access doors are designed to blend seamlessly into exterior soffits/ceilings. The hinged feature allows this door to be installed in walls.

Product Features

- Portland Cement, Fiber, Post Consumer Recycled Glass
- European Angle Hinges
- Tapered edge for joint tape
- Easily textured
- Lightweight
- No cracking or shrinkage
- Mold and moisture resistant

GFRC-SH STANDARD SIZES

Door Size INCH(mm)	Ceiling Opening INCH(mm)
9 x 9 (229 x 229)	15 x 15 (381 x 381)
12 x 12 (305 x 305)	18 x 18 (457 x 457)
16 x 16 (406 x 406)	22 x 22 (559 x 559)
18 x 18 (457 x 457)	24 x 24 (610 x 610)
24 x 24 (610 x 610)	30 x 30 (762 x 762)

Valve Boxes

ARVB

VALVE BOXES, *Recessed*



ARVB STANDARD SIZES

INCH	mm
8 x 8 x 4	203 x 203 x 102
8 x 8 x 6	203 x 203 x 152
8 x 8 x 8	203 x 203 x 203
12 x 12 x 4	305 x 305 x 102
12 x 12 x 6	305 x 305 x 152
12 x 12 x 8	305 x 305 x 203

Stainless Steel Valve Box Shown

Application

- Provides easy access to all types of valves and controls that need to be concealed in the wall, but protected by a fully enclosed box

Product Features

- The depth of the valve box can be modified to meet all the valve and control requirements
- When required, vision panels, louvers, engraved plates can be supplied, along with special holes for pipes or conduits

ASVB

VALVE BOXES, *Surface Mount*



ASVB STANDARD SIZES

INCH	mm
8 x 8 x 4	203 x 203 x 101
8 x 8 x 6	203 x 203 x 152
8 x 8 x 8	203 x 203 x 203
12 x 12 x 4	305 x 305 x 101
12 x 12 x 6	305 x 305 x 152
12 x 12 x 8	305 x 305 x 203

Stainless Steel Valve Box Shown

Application

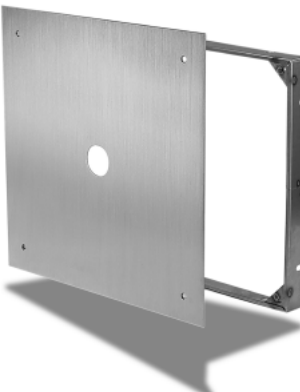
- Provides easy access to valves and controls that extend outside of the finished wall, needing protection by an enclosed box.

Product Features

- The depth of the valve box can be modified to meet all the valve and control requirements.
- When required, vision panels, louvers, engraved plates can be supplied, along with special holes for pipes or conduits.

AFVP

Flush Valve Panel



AFVP STANDARD SIZES

INCH	mm
12 x 12	305 x 305
15 x 15	381 x 381

Stainless Steel Door Shown

Application

- Provides quick and easy access to flush valves that are concealed in the wall

Product Features

- Door panel is removable from the frame via tamperproof stainless steel screws
- A 1-1/2" dia. hole in the center of the panel is provided for the valve handle

Roof Hatches

RHA ALUMINUM LADDER ACCESS ROOF HATCH



RHA ALUMINUM LADDER ACCESS ROOF HATCH STANDARD SIZES

MODEL	Inches(mm)
A3232	24 x 24 (610 x 610)
A3238	24 x 30 (610 x 762)
A3244	24 X 36 (610 X 914)
A3838	30 x 30 (762 x 762)
A3844	30 x 36 (762 x 914)
A4444	36 x 36 (914 x 914)

Application

- Acudor Ladder Access Roof Hatches are designed to provide convenient, economical access to the roof of a building

Features RHA

- Weather tight construction
- Convenient one-hand operation
- 12" high insulated curb
- Supports 40lbs./sq. ft. live load
- Stainless Steel Hardware

Optional Features RHA

- Painted and Anodized finishes
- Polycarbonate domes for daylighting
- Louvered Curbs
- Curb Mounted Units
- Curb pitch corrected for sloped roof
- Higher curb heights for "green roof" applications

RHG GALVANIZED LADDER ACCESS ROOF HATCH



RHG GALVANIZED LADDER ACCESS ROOF HATCH STANDARD SIZES

MODEL	Inches(mm)
G3232	24 x 24 (610 x 610)
G3238	24 x 30 (610 x 762)
G3244	24 X 36 (610 X 914)
G3838	30 x 30 (762 x 762)
G3844	30 x 36 (762 x 914)
G4444	36 x 36 (914 x 914)

Application

- Acudor Ladder Access Roof Hatches are designed to provide convenient, economical access to the roof of a building

Features RHG

- Weather tight construction
- Convenient one-hand operation
- 12" high insulated curb
- Supports 40lbs./sq. ft. live load
- 90 Galv. Steel
- Stainless Steel Hardware

Optional Features RHG

- Stainless Steel cover, curb
- Polycarbonate domes for daylighting
- Louvered Curbs
- Curb Mounted Units
- Curb pitch corrected for sloped roof
- Higher curb heights for "green roof" applications

RHA ALUMINUM SHIP STAIR ACCESS ROOF HATCH



RHA ALUMINUM SHIP STAIR ACCESS ROOF HATCH STANDARD SIZES

MODEL	Inches(mm)
A3862	30 x 54 (762 x 1372)

Application

- Acudor Ship Stair Roof Hatches are designed to provide convenient, economical access to the roof of a building for maintenance.

Features RHA

- Weather tight construction
- Convenient one-hand operation
- 12" high insulated curb
- Supports 40lbs./sq. ft. live load
- Stainless Steel Hardware

Optional Features RHA

- Painted and Anodized finishes (RHA)
- Polycarbonate domes for daylighting
- Louvered Curbs
- Curb Mounted Units
- Curb pitch corrected for sloped roof
- Higher curb heights for "green roof" applications

RHG GALVANIZED SHIP STAIR ACCESS ROOF HATCH



RHG GALVANIZED SHIP STAIR ACCESS ROOF HATCH STANDARD SIZES

MODEL	Inches(mm)
G3862	30 x 54 (762 x 1372)

Application

- Acudor Ship Stair Roof Hatches are designed to provide convenient, economical access to the roof of a building for maintenance.

Features RHG

- Weather tight construction
- Convenient one-hand operation
- 12" high insulated curb
- Supports 40lbs./sq. ft. live load
- G90 Galv. Steel
- Stainless Steel Hardware

Optional Features RHG

- Stainless Steel cover, curb
- Polycarbonate domes for daylighting
- Louvered Curbs
- Curb Mounted Units
- Curb pitch corrected for sloped roof
- Higher curb heights for "green roof" applications

Roof Hatches

RHA ALUMINUM SERVICE STAIR ACCESS ROOF HATCH



RHA ALUMINUM SERVICE STAIR ACCESS ROOF HATCH STANDARD SIZES

MODEL **Inches(mm)**

A38104 30 x 96 (762 x 2438)

Application

- Acudor Service Stair Roof Hatches are designed to provide convenient, economical access to the roof of a building from a full size staircase to perform maintenance.

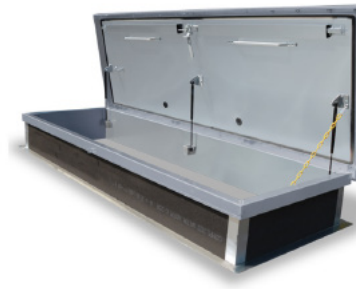
Features RHA

- Weather tight construction
- Convenient one-hand operation
- 12" high insulated curb
- Supports 40lbs./sq. ft. live load
- Stainless Steel Hardware

Optional Features RHA

- Painted and Anodized finishes (RHA)
- Polycarbonate domes for daylighting
- Louvered Curbs
- Curb Mounted Units
- Curb pitch corrected for sloped roof
- Higher curb heights for "green roof" applications

RHG GALVANIZED SERVICE STAIR ACCESS ROOF HATCH



RHG GALVANIZED SERVICE STAIR ACCESS ROOF HATCH STANDARD SIZES

MODEL **Inches(mm)**

G38104 30 x 96 (762 x 2438)

Application

- Acudor Service Stair Roof Hatches are designed to provide convenient, economical access to the roof of a building from a full size staircase to perform maintenance.

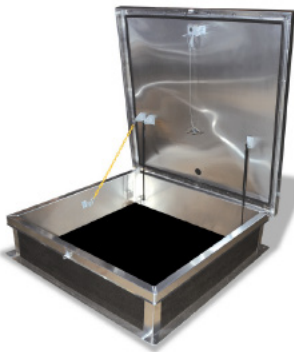
Features RHG

- Weather tight construction
- Convenient one-hand operation
- 12" high insulated curb
- Supports 40lbs./sq. ft. live load
- G90 Galv. Steel
- Stainless Steel Hardware

Optional Features RHG

- Stainless Steel cover, curb
- Polycarbonate domes for daylighting
- Louvered Curbs
- Curb Mounted Units
- Curb pitch corrected for sloped roof
- Higher curb heights for "green roof" applications

RHA ALUMINUM EQUIPMENT ACCESS ROOF HATCH - Single Leaf



RHA EQUIPMENT ACCESS SINGLE LEAF STANDARD SIZES

MODEL **Inches(mm)**

A5656 48 x 48 (1219 x 1219)

Application

Acudor Equipment Access Roof Hatches are designed to provide convenient, economical access to the roof of a building where larger openings are required. This opening allows for equipment to be installed or removed from a building through the roof.

Features RHA

- Weather tight construction
- Convenient one-hand operation
- 12" high insulated curb
- Supports 40lbs./sq. ft. live load
- Stainless Steel Hardware

Optional Features RHA

- Painted and Anodized finishes
- Polycarbonate domes for daylighting
- Louvered Curbs
- Curb Mounted Units
- Curb pitch corrected for sloped roof
- Higher curb heights for "green roof" applications

RHG GALVANIZED EQUIPMENT ACCESS ROOF HATCH - Single Leaf



RHG EQUIPMENT ACCESS SINGLE LEAF STANDARD SIZES

MODEL **Inches(mm)**

G5656 48 x 48 (1219 x 1219)

Application

Acudor Equipment Access Roof Hatches are designed to provide convenient, economical access to the roof of a building where larger openings are required. This opening allows for equipment to be installed or removed from a building through the roof.

Features RHG

- Weather tight construction
- Convenient one-hand operation
- 12" high insulated curb
- Supports 40lbs./sq. ft. live load
- G90 Galv. Steel
- Stainless Steel Hardware

Optional Features RHG

- Stainless Steel cover, curb
- Polycarbonate domes for daylighting
- Louvered Curbs
- Curb Mounted Units
- Curb pitch corrected for sloped roof
- Higher curb heights for "green roof" applications

RHA ALUMINUM EQUIPMENT ACCESS ROOF HATCH - Double Leaf



**RHA EQUIPMENT ACCESS
DOUBLE LEAF
STANDARD SIZES**

MODEL	Inches(mm)
-------	------------

A6868	60 x 60 (1524 x 1524)
-------	-----------------------

Application

Acudor Equipment Access Roof Hatches are designed to provide convenient, economical access to the roof of a building where larger openings are required. This opening allows for equipment to be installed or removed from a building through the roof.

Product Features

- Weather tight construction
- Convenient one-hand operation
- 12" high insulated curb
- Supports 40lbs./sq. ft. live load
- Stainless Steel Hardware

Optional Features RHA

- Painted and Anodized finishes (RHA)
- Galvanized steel curb and Aluminum cover
- Polycarbonate domes for daylighting
- Louvered Curbs
- Curb Mounted Units
- Curb pitch corrected for sloped roof
- Higher curb heights for "green roof" applications
- Higher Live Load support

RHG GALVANIZED EQUIPMENT ACCESS ROOF HATCH - Double Leaf



**RHG EQUIPMENT ACCESS
DOUBLE LEAF
STANDARD SIZES**

MODEL	Inches(mm)
-------	------------

G6868	60 x 60 (1524 x 1524)
-------	-----------------------

Application

Acudor Equipment Access Roof Hatches are designed to provide convenient, economical access to the roof of a building where larger openings are required. This opening allows for equipment to be installed or removed from a building through the roof.

Product Features

- Weather tight construction
- Convenient one-hand operation
- 12" high insulated curb
- Supports 40lbs./sq. ft. live load
- G90 Galv. Steel
- Stainless Steel Hardware

Optional Features RHG

- Painted and Anodized finishes
- Polycarbonate domes for daylighting
- Louvered Curbs
- Curb Mounted Units
- Galvanized steel curb and Aluminum cover
- Curb pitch corrected for sloped roof
- Higher curb heights for "green roof" applications
- Available with Galvanized Steel Curb and Aluminum Cover
- Higher Live Load Support

RHG-SEC GALVANIZED SECURITY ROOF HATCH



**RHG-SEC GALVANIZED
SECURITY ROOF HATCH
STANDARD SIZES**

MODEL	Inches(mm)
-------	------------

GSEC3232	24 x 24 (610 x 610)
GSEC3224	24 x 36 (610 x 914)
GSEC3838	30 x 30 (762 x 762)
GSEC3844	30 x 36 (762 x 914)
GSEC4444	36 x 36 (914 x 914)

Application

Acudor Security Roof Hatches are designed to provide convenient, economical access to the roof of a building while adding an additional level of security. The heavy gauge materials used to manufacture this hatch are ideal for applications in banks, prisons, hospitals and more.

Features RHG

- Weather tight construction
- Convenient one-hand operation
- 12" high insulated curb
- Supports 40lbs./sq. ft. live load
- G90 Galv. Steel
- Stainless Steel Hardware

Optional Features RHG

- Stainless Steel cover, curb
- Aluminum Material
- Louvered Curbs
- Curb Mounted Units
- Curb pitch corrected for sloped roof
- Higher curb heights for "green roof" applications

RHADD ALUMINUM DOMED ROOF HATCH



RHADD STANDARD SIZES

MODEL	Inches(mm)
-------	------------

AD3232	24 x 24 (610 x 610)
AD3244	24 x 36 (610 x 914)
AD3838	30 x 30 (762 x 762)
AD3844	30 x 36 (762 x 914)
AD4444	36 x 36 (914 x 914)

Application

Acudor Equipment Access Roof Hatches are designed to provide convenient, economical access to the roof of a building. The Polycarbonate Domes provide the benefit of a skylight.

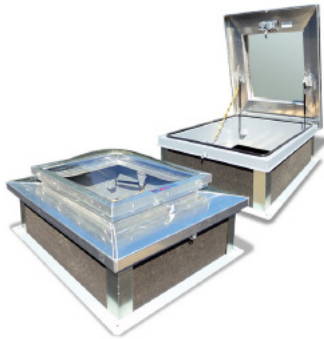
Features RHADD

- Clear, bronze, white, combination polycarbonate double-skin dome
- Stainless Steel Hardware

Optional Features RHADD

- Stainless Steel cover, curb
- Louvered Curbs
- Curb Mounted Units
- Curb pitch corrected for sloped roof
- All Aluminum construction, cover and curb

RHGDD GALVANIZED DOMED ROOF HATCH



RHGDD STANDARD SIZES

MODEL	Inches(mm)
GD3232	24 x 24 (610 x 610)
GD3244	24 x 36 (610 x 914)
GD3838	30 x 30 (762 x 762)
GD3844	30 x 36 (762 x 914)
GD4444	36 x 36 (914 x 914)

Application

Acudor Equipment Access Roof Hatches are designed to provide convenient, economical access to the roof of a building. The Polycarbonate Domes provide the benefit of a skylight.

Features RHGDD

- Clear, bronze, white, combination polycarbonate double-skin dome
- G90 Galv. Steel
- Stainless Steel Hardware

Optional Features RHGDD

- Stainless Steel cover, curb
- Louvered Curbs
- Curb Mounted Units
- Curb pitch corrected for sloped roof
- All Aluminum construction, cover and curb

RHA ALUMINUM ELECTRIC ACTUATION ROOF HATCH



RHA ELECTRIC ACTUATION ROOF HATCH STANDARD SIZES

MODEL	Inches(mm)
EA3232	24 x 24 (610 x 610)
EA3244	24 x 36 (610 x 914)
EA3838	30 x 30 (762 x 762)
EA3844	30 x 36 (762 x 914)
EA3862	30 x 54 (762 x 1372)
EA3804	30 x 96 (762 x 2438)
EA4444	36 x 36 (914 x 914)
EA5656	48 x 48 (1219 x 1219)

Application

Acudor Electric Actuation Roof Hatches are designed to provide convenient, economical access to the roof of a building with the ease of automation. By adding an electric actuator, our hatch can be opened and closed remotely. This feature is available on small ladder access hatches, and more importantly on larger equipment hatches, which are typically heavy and difficult to operate.

Features RHA

- Choice of operating switch and/or remote control
- 12V/24V DC Electrical Actuator: Suitable for mains supply AC 120V/60Hz or 230V/50Hz
- Can open to any angle up to 80 degrees max
- Battery back-up
- Synchronized operation for large sizes

RHG GALVANIZED ELECTRIC ACTUATION ROOF HATCH



RHG ELECTRIC ACTUATION ROOF HATCH STANDARD SIZES

MODEL	Inches(mm)
EG3232	24 x 24 (610 x 610)
EG3244	24 x 36 (610 x 914)
EG3838	30 x 30 (762 x 762)
EG3844	30 x 36 (762 x 914)
EG3862	30 x 54 (762 x 1372)
EG3804	30 x 96 (762 x 2438)
EG4444	36 x 36 (914 x 914)
EG5656	48 x 48 (1219 x 1219)

Application

Acudor Electric Actuation Roof Hatches are designed to provide convenient, economical access to the roof of a building with the ease of automation. By adding an electric actuator, our hatch can be opened and closed remotely. This feature is available on small ladder access hatches, and more importantly on larger equipment hatches, which are typically heavy and difficult to operate.

Features RHG

- Choice of operating switch and/or remote control
- 12V/24V DC Electrical Actuator: Suitable for mains supply AC 120V/60Hz or 230V/50Hz
- Can open to any angle up to 80 degrees max
- Battery back-up
- Synchronized operation for large sizes
- G90 Galv. Steel
- Stainless Steel Hardware

RHATB ALUMINUM THERMALLY BROKEN ROOF HATCH

NEW PRODUCT



RHATB ALUMINUM THERMALLY BROKEN ROOF HATCH STANDARD SIZES

MODEL	Inches(mm)
T3838	30 x 30 (762 x 762)
T3844	30 x 36 (762 x 914)
T4444	36 x 36 (914 x 914)
T3862	30 x 54 (762 x 1372)
T38104	30 x 96 (762 x 2438)
T5656	48 x 48 (1219 x 1219)

Application

Acudor Thermally Broken Roof Hatches are designed to provide superior energy efficiency together with convenient, economical access to the roof of a building

Features RHA

- Thermally broken design
- Convenient one-hand operation
- R-18 insulated curb and cover
- Supports 40lbs./sq. ft. live load
- Stainless Steel Hardware

Optional Features RHA

- Painted and Anodized finishes
- Curb pitch corrected for sloped roof
- Higher curb heights for "green roof" applications

Smoke Vents

SVA ALUMINUM SMOKE VENT, Single Leaf



SVA ALUMINUM SMOKE VENT, SINGLE LEAF STANDARD SIZES

MODEL	Inches(mm)
SVA2424	24 x 24 (610 x 610)
SVA2436	24 x 36 (610 x 914)
SVA3030	30 x 30 (762 x 762)
SVA3036	30 x 36 (762 x 914)
SVA3096	30 x 96 (762 x 2438)
SVA3636	36 x 36 (914 x 914)
SVA4848	48 x 48 (1219 x 1219)

Application

Acudor Smoke Vents are designed to provide an economical solution for fire ventilation by removing deadly smoke, heat, and gases from a burning building. Single leaf Smoke Vents are used for smaller areas that need venting, including elevator shafts and stairwells. *Single leaf units are not U.L. Listed.*

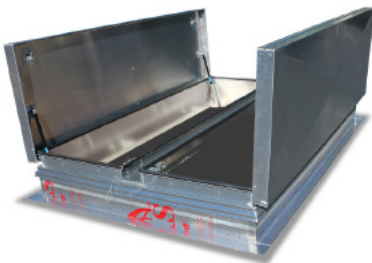
Features SVA

- 1/8" thick aluminum
- 12" high insulated curb
- High performance gas springs
- Inside and Outside manual release
- UL Listed Fusible or McCabe Resettable Links
- Stainless Steel Hardware

Optional Features SVA

- Curb mount or Metal Building Flange
- Double-Dome Polyester lids for daylighting
- Louvered curb for ventilation

SVA ALUMINUM UL LISTED SMOKE VENT, Double Leaf



SVA ALUMINUM UL LISTED SMOKE VENT, DOUBLE LEAF STANDARD SIZES

MODEL	Inches(mm)
SVA4848	48 x 48 (1219 x 1219)
SVA4872	48 x 72 (1219 x 1829)
SVA4890	48 x 90 (1219 x 2286)
SVA4896	48 x 96 (1219 x 2438)
SVA6060	60 x 60 (1524 x 1524)
SVA6072	60 x 72 (1524 x 1829)
SVA6090	60 x 90 (1524 x 2286)
SVA6096	60 x 96 (1524 x 2438)

Application

Acudor Smoke Vents are designed to provide an economical solution for fire ventilation. These UL-Listed, automatic Smoke Vents provide invaluable assistance to firefighters by evacuating deadly smoke, heat, and gases from a burning building.

Features SVA

- 1/8" Aluminum
- 12" high insulated curb
- UL Listed Fusible or McCabe Resettable Links
- Inside and Outside manual release
- High performance gas springs

Optional Features SVA

- Curb mount or Metal Building Flange
- Double-Dome Co-Polyester lids for daylighting
- Louvered curb for ventilation

SVG GALVANIZED SMOKE VENT, Single Leaf



SVG GALVANIZED SMOKE VENT, SINGLE LEAF STANDARD SIZES

MODEL	Inches(mm)
SVG2424	24 x 24 (610 x 610)
SVG2436	24 x 36 (610 x 914)
SVG3030	30 x 30 (762 x 762)
SVG3036	30 x 36 (762 x 914)
SVG3096	30 x 96 (762 x 2438)
SVG3636	36 x 36 (914 x 914)
SVG4848	48 x 48 (1219 x 1219)

Application

Acudor Smoke Vents are designed to provide an economical solution for fire ventilation by removing deadly smoke, heat, and gases from a burning building. Single leaf Smoke Vents are used for smaller areas that need venting, including elevator shafts and stairwells. *Single leaf units are not U.L. Listed.*

Features SVG

- 14 gauge G90 Galvanized Steel
- 12" high insulated curb
- High performance gas springs
- Inside and Outside manual release
- UL Listed Fusible or McCabe Resettable Links

Optional Features SVG

- Curb mount or Metal Building Flange
- Double-Dome Co-Polyester lids for daylighting
- Louvered curb for ventilation

SVG GALVANIZED UL LISTED SMOKE VENT, Double Leaf



SVG GALVANIZED UL LISTED SMOKE VENT, DOUBLE LEAF STANDARD SIZES

MODEL	Inches(mm)
SVG4848	48 x 48 (1219 x 1219)
SVG4872	48 x 72 (1219 x 1829)
SVG4890	48 x 90 (1219 x 2286)
SVG4896	48 x 96 (1219 x 2438)
SVG6060	60 x 60 (1524 x 1524)
SVG6072	60 x 72 (1524 x 1829)
SVG6090	60 x 90 (1524 x 2286)
SVG6096	60 x 96 (1524 x 2438)

Application

Acudor Smoke Vents are designed to provide an economical solution for fire ventilation. These UL-Listed, automatic Smoke Vents provide invaluable assistance to firefighters by evacuating deadly smoke, heat, and gases from a burning building.

Features SVG

- 14 gauge G90 Galvanized Steel
- 12" high insulated curb
- UL Listed Fusible or McCabe Resettable Links
- Inside and Outside manual release
- High performance gas springs

Optional Features SVG

- Curb mount or Metal Building Flange
- Double-Dome Co-Polyester lids for daylighting
- Louvered curb for ventilation

RHSR SAFETY RAILS

SAFETY ACCESSORIES, Roof Hatch Rail System



RHSR SAFETY RAIL STANDARD SIZES

Nominal Opening W&H	
INCH	mm
24 x 24	610 x 610
24 x 30	610 x 762
24 x 36	610 x 914
30 x 30	762 x 762
30 x 36	762 x 914
42 x 42	1067 x 1067
48 x 48	1220 x 1220
48 x 72	1220 x 1829
60 x 60	1524 x 1524

Safety First

Caution is the key when working in high elevations and that is where most roof and ceiling access is found.

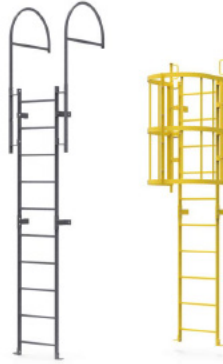
Acudor Safety Rails are designed for all Roof Hatch applications to assist in making every work space as safe as possible.

Features

- Railing system surrounds all sides of the opening
- (Self Closing Gate) Spring tension gate keeps the opening closed after pass through
- Easy to install
- Assembled on site, no special tools necessary
- Safe, easy and economic access
- Standard Finish is Safety Yellow Painted, also available in Galvanized finish

LADDER

Fixed Shaft Modular Ladder System



Ladder

Material: Steel ASTM A36
Stringers: LAD-H: 2 1/2"x 3/8"
Rungs: LAD-H: 1"dia
Ladder Width: 20"inside
Length: 4' & 5' (special lengths available on request)
Weight: LAD-H: 10.5 Lbs/ft

Cage

Material: Steel ASTM A36
Hoops: 2"x 1/4"Th.
Straps: 1"x 3/16"Th.
Weight: 8 Lbs/ft
Height: 48"

Telescopic Safety Upstand

Material: Steel ASTM A36
Extended height: 40"from top rung

Landing Guide Rail

Material: Steel ASTM A36
Extended height: 42"from top rung

Hinged Gate

Material: 12 Ga. Steel ASTM A36
Height: 7'

Component System

Create the desired length using 4 ft. & 5 ft. Ladder modules along with a variety of accessories & mounting options.

Features

- Provides safe, easy & economic access
- Ladders Flat Packed Kit with rapid delivery
- Modular design serving multitude of length requirements
- Easy to store & install
- Assembled on site, no special tools necessary
- Non-slip Rungs ensure secure footholds & handholds
- Standard Finish is Safety Yellow Painted, also available in Galvanized finish
- OSHA Compliant Ladder

SAFETY OPTIONS

SAFETY ACCESSORIES



TSP-1:

SLE-Y:

Application

- Safety accessibility to roof areas through the Roof Hatch opening

Product Features

- All of these safety products are designed to be used with the Acudor Roof Hatch to allow safe use at all times

Components

TSP-1: Telescoping Safety Post

SLE-Y: Safety Ladder Extension

FA-300

FLOOR DOOR, 300 lb./sq ft loading



Available with electrical actuators, operated by wall mounted push button switch, and remote control

FA-300 STANDARD SIZES

INCH	mm
24 x 24	610 x 610
24 x 30	610 x 762
24 x 36	610 x 914
30 x 30	762 x 762
30 x 48	762 x 1219
36 x 36	914 x 914
36 x 48	914 x 1219
42 x 42	1067 x 1067
48 x 48*	1219 x 1219
48 x 72*	1219 x 1829
60 x 60*	1524 x 1524

*Double leaf

Application

- Designed for interior and exterior applications where watertightness is not required

Product Features

- Angle frame construction with integral anchor flange is designed to be cast into concrete
- Retrofit frame design is available when unit is bolted into existing opening
- Diamond plate door panel is equipped with a flush aluminum drop handle and an automatic hold open arm

FA-300 Retrofit

FLOOR DOOR, 300 lb./sq ft loading



Available with electrical actuators, operated by wall mounted push button switch, and remote control

FA-300-R STANDARD SIZES

INCH	mm
24 x 24	610 x 610
24 x 30	610 x 762
24 x 36	610 x 914
30 x 30	762 x 762
30 x 48	762 x 1219
36 x 36	914 x 914
36 x 48	914 x 1219
42 x 42	1067 x 1067
*48 x 48	1219 x 1219
*48 x 72	1219 x 1829
*60 x 60	1524 x 1524

*Double leaf

Application

- Designed for interior and exterior applications where watertightness is not required.
- For use when the door will not be cast into concrete, but bolted down.

Product Features

- Angle frame construction designed to be bolted into an existing opening
- Diamond plate door panel is equipped with a flush aluminum drop handle and an automatic hold open arm

FA-H20

FLOOR DOOR, H20 loading



Double Leaf

Available with electrical actuators, operated by wall mounted push button switch, and remote control

FA-H20 STANDARD SIZES

INCH	mm
24 x 24	610 x 610
24 x 30	610 x 762
24 x 36	610 x 914
30 x 30	762 x 762
30 x 48	762 x 1219
36 x 36	914 x 914
36 x 48	914 x 1219
42 x 42	1067 x 1067
48 x 48*	1219 x 1219
48 x 72*	1219 x 1829
60 x 60*	1524 x 1524

*Double leaf

Application

Indoor or Outdoor applications where dirt and water are prevented from falling into work area. Drainage is provided through threaded coupling in channel

Product Features

- Angle frame construction with integral anchor flange is designed to be cast into concrete
- Diamond plate door panel is equipped with a flush aluminum drop handle and an automatic hold open arm, along with stainless steel compression spring & stainless steel slamlock
- Designed for off-street locations that may occasionally receive AASHTO H 20-44 wheel loads

FC-300

FLOOR DOOR, Channel Frame, 300 lbs./sq ft loading



Available with electrical actuators, operated by wall mounted push button switch, and remote control

FC-300 STANDARD SIZES

INCH	mm
24 x 24	610 x 610
24 x 30	610 x 762
30 x 30	762 x 762
30 x 36	762 x 914
36 x 36	914 x 914
36 x 48	914 x 1219
42 x 42	1067 x 1067
48 x 48*	1219 x 1219
48 x 72*	1219 x 1829
60 x 60*	1524 x 1524

*Double leaf

Application

- Indoor or Outdoor applications where dirt and water are prevented from falling into work area. Drainage is provided through threaded coupling in channel

Product Features

- Channel frame construction with 1 1/2" drainage coupling and integral anchor flange is designed to be cast into concrete
- Diamond plate door panel is equipped with a flush aluminum drop handle and an automatic hold open arm

Floor Doors - Flush

FC-H20

FLOOR DOOR, Channel Frame, H20 loading



Available with electrical actuators, operated by wall mounted push button switch, and remote control

FC-H20 STANDARD SIZES

INCH	mm
24 x 24	610 x 610
24 x 30	610 x 762
24 x 36	610 x 914
30 x 30	762 x 762
30 x 36	762 x 914
36 x 36	914 x 914
36 x 48	914 x 1219
42 x 42	1067 x 1067
48 x 48*	1219 x 1219
48 x 72*	1219 x 1829
60 x 60*	1524 x 1524

*Double leaf

Application

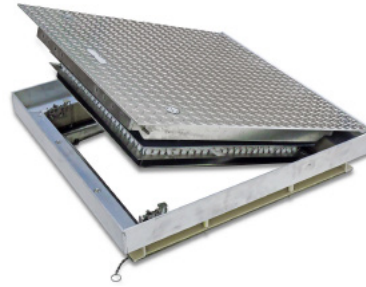
Indoor or Outdoor applications where dirt and water are prevented from falling into work area. Drainage is provided through threaded coupling in channel

Product Features

- Channel frame construction with 1 1/2" drainage coupling and integral anchor flange is designed to be cast into concrete
- Diamond plate door panel is equipped with a flush aluminum drop handle and an automatic hold open arm
- Designed for off-street locations that may occasionally receive AASHTO H 20-44 wheel loads

FRFD

FLOOR DOOR, Fire Rated, Flush Diamond Plate



FRFD STANDARD SIZES

INCH	mm
24 x 24	610 x 610
24 x 36	610 x 914
24 x 48	610 x 1219
30 x 30	762 x 762
30 x 36	762 x 914
36 x 36	914 x 914
36 x 48	914 x 1219
42 x 42	1067 x 1067
48 x 48	1219 x 1219

Application

- Maintains the fire rating of a 2 hour floor ceiling assembly
- Designed for interior applications

Product Features

- Flush aluminum diamond plate cover
- Warnock Hersey International 2 hour fire rating
- Tested to NFPA 288 ; ASTM E 119

Available options:

FRFD-R Recessed 1" (25.4mm) for thicker architectural flooring (ceramic, stone, terrazzo, etc.)

FRFD-R18 Recessed 1/8" (3.16mm) for thin composite flooring (carpet, vinyl, rubber, etc.)



AW-APS

FLOOR DOOR, Flood/Gas/Odor Resistant



AW-APS is designed for downward water pressure only.

AW-APS STANDARD SIZES

INCH	mm
24 x 24	610 x 610
24 x 36	610 x 914
30 x 30	762 x 762
30 x 48	762 x 1219
36 x 36	914 x 914
36 x 48	914 x 1219

This design has been hydrostatically tested to hold up to 25 ft. of water for a period of 10 minutes (Downward pressure only)
A copy of the test report is available upon request.

Application

Designed for interior and exterior applications where flood, gas, or odor resistance is required.

Product Features

- Angle frame construction with anchors welded around the frame for casting into concrete.
- Diamond plate door panel is reinforced for a live load of 1560 pounds/sq ft. Capable of holding up to 25 ft. head of water (Downward pressure only).
- Door panel overlaps frame, compressing the gasket providing a continuous seal.
- EPDM gasket and cam locks designed so door will not leak from standing water, and to reduce the amount of gases and odor that can escape from below.

A-FPS

FLOOR DOOR, Flood Resistant



A-FPS STANDARD SIZES

INCH	mm
24 x 24	610 x 610
30 x 30	762 x 762
30 x 48	762 x 1219
36 x 36	914 x 914
36 x 48	914 x 1219

Application

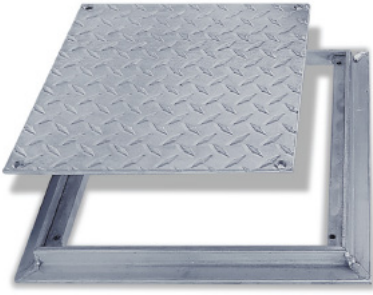
Designed for applications where water may rise above the surface opening, or where odor and gas may need to be suppressed. This door is ideal for retrofit applications. This design is suitable for use in potable water applications.

Product Features

- Angle frame construction with 4" high horizontal leg to allow for bolting to concrete.
- Diamond plate door panel is reinforced for a live load of 625 pounds/sq. ft. capable of holding up to 10 ft. head of water from the outside (downward pressure only).
- Door panel overlaps frame, compressing the gasket providing a flood resistant fit.
- U shaped neoprene gasket and stainless steel pressure lock system ensure the door will reduce the amount of odor and gases that escape from below.

FD-8060

FLOOR DOOR, Non Hinged, Flush Diamond Plate, 150 lb./sq. ft loading



FD-8060 STANDARD SIZES

INCH	mm
8 x 8	203 x 203
12 x 12	305 x 305
18 x 18	457 x 457
24 x 24	610 x 610

Application

- Designed for interior and exterior applications that require an access opening that will blend in with the surrounding floor material

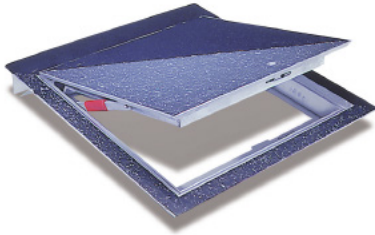
Product Features

- Flush Diamond Plate door panel
- Door panel removable via screws

Floor Doors - Recessed

FT-8040

FLOOR DOOR, Recessed 1/8" for Vinyl Tile/Carpet



Available with electrical actuators, operated by wall mounted push button switch, and remote control

FT-8040 STANDARD SIZES

INCH	mm
24 x 24	609 x 609
24 x 30	609 x 762
24 x 36	609 x 914
30 x 30	762 x 762
30 x 36	762 x 914
36 x 36	914 x 914
42 x 42	1066 x 1066
48 x 48*	1220 x 1220
48 x 72*	1220 x 1829
60 x 60*	1524 x 1524

*Double leaf

Application

- Designed for interior and exterior applications that require an access opening that will blend in with the surrounding floor material

Product Features

- Recessed 1/8" to accommodate carpeting and vinyl tile.
- Door panel is equipped with a flush aluminum drop handle and an automatic hold open arm

FT-8050

FLOOR DOOR, Recessed 1" for Ceramic Tile/Concrete



Available with electrical actuators, operated by wall mounted push button switch, and remote control

FT-8050 STANDARD SIZES

INCH	mm
24 x 24	610 x 610
24 x 30	610 x 762
24 x 36	610 x 914
30 x 30	762 x 762
30 x 36	762 x 914
36 x 36	914 x 914
42 x 42	1067 x 1067
48 x 48*	1220 x 1220
48 x 72*	1220 x 1829
60 x 60*	1524 x 1524

*Double leaf

Application

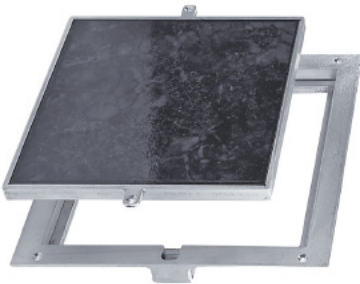
- Designed for interior and exterior applications that require an access opening that will blend in with the surrounding floor material

Product Features

- Recessed 1" to accommodate ceramic tile/concrete flooring
- Door panel is equipped with a flush aluminum drop handle and an automatic hold open arm

FT-8080

FLOOR DOOR, Non Hinged Panel Recessed 1/8" for Vinyl Tile/Carpet



FT-8080 STANDARD SIZES

INCH	mm
8 x 8	203 x 203
12 x 12	305 x 305
18 x 18	457 x 457
24 x 24	610 x 610

Application

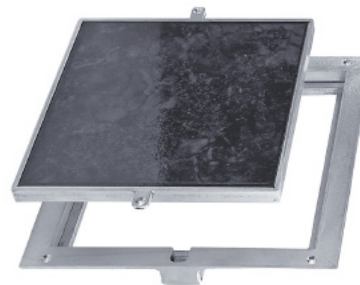
- Designed for interior and exterior applications that require an access opening that will blend in with the surrounding floor material

Product Features

- Recessed 1/8" to accommodate carpeting and vinyl tile
- To keep the floor material from cracking or chipping within the door panel, the securing screws are located in the flange of the mounting frame

FT-8080-1

FLOOR DOOR, Non Hinged Panel Recessed 1" for Ceramic Tile/Concrete



FT-8080-1 STANDARD SIZES

INCH	mm
8 x 8	203 x 203
12 x 12	305 x 305
18 x 18	457 x 457
24 x 24	610 x 610

Application

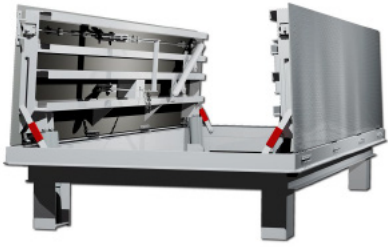
- Designed for interior and exterior applications that require an access opening that will blend in with the surrounding floor material.

Product Features

- Recessed 1" to accommodate ceramic tile/concrete.
- To keep the floor material from cracking or chipping within the door panel, the securing screws are located in the flange of the mounting frame

EEH

EMERGENCY EGRESS HATCH



Application

- In Metro systems everywhere, the EEH Emergency Egress Door provides passengers and crew with an auxiliary exit to the street level in emergency situations

Product Features

- Channel frame construction with anchors welded around the frame for casting into concrete.
- Diamond plate door panel is reinforced for a live load of 300 pounds/sq ft. (pedestrian loading or light vehicular loading for off-street locations).



EEH



For inquiries in the U.S.A. and Caribbean
ACUDOR PRODUCTS INC.

9 Woodland Rd., Unit A Roseland, NJ 07068
TEL: (973) 575-5120 - FAX: (973) 575-5160
TOLL FREE: 800.722.0501
info@acudor.com / www.acudor.com

U.S.A. West Coast Office:

4216 North Pecos Rd., Las Vegas, NV 89115
TEL: (702) 644-8710 - FAX: (702) 644-8720

For inquiries in Mexico

ACUDOR PRODUCTS, S. DE R.L. DE C.V.

Carretera Saltillo-Zacatecas km 4.5
Parque Industrial La Angostura
Saltillo, Coahuila, México CP 25315
+52 844 171 6595
infomx@acudor.com / spanish.acudor.com

For inquiries in Canada

ACUDOR PRODUCTS LTD.

1125 Squires Beach Road, Pickering, Ontario, Canada L1W 3T9
TEL: (905) 683.6121 - FAX: (905) 426.2978 - TOLL FREE: 844.228.3671
info@acudor.ca / www.acudor.com

For inquiries Outside of North America:

ACUDOR INTERNATIONAL (c/o Nelson Industrial Inc.)

905-428-2240
info@acudorintl.com / www.acudor.com

For inquiries in India / Middle East / North Africa

ACUDOR PRODUCTS IMEA

PO Box 46747 Dubai, United Arab Emirates
+971-4-399-6966
ap-imea@acudor.com / www.acudor.com