

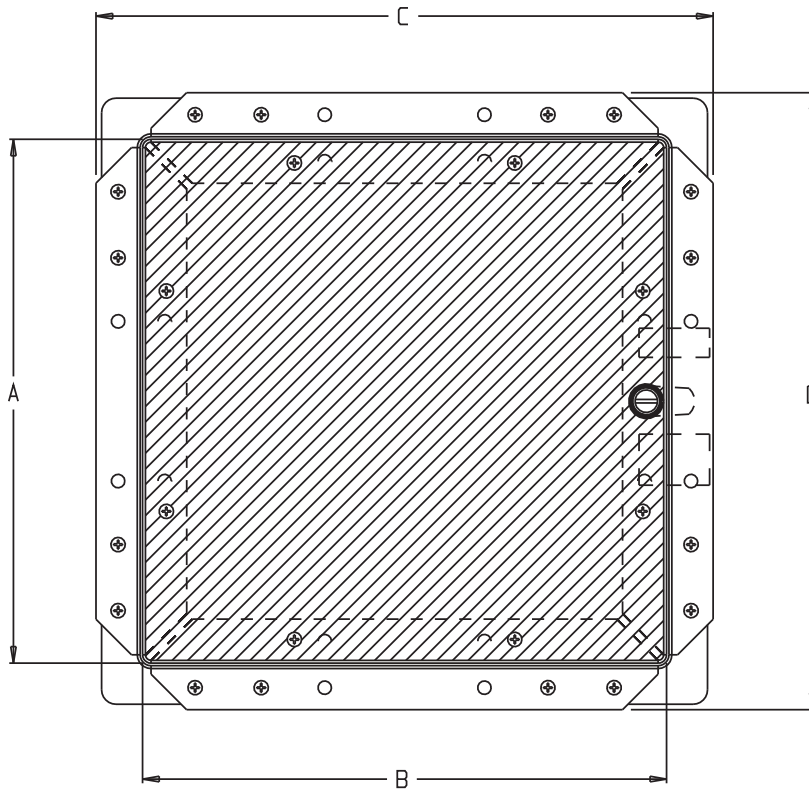
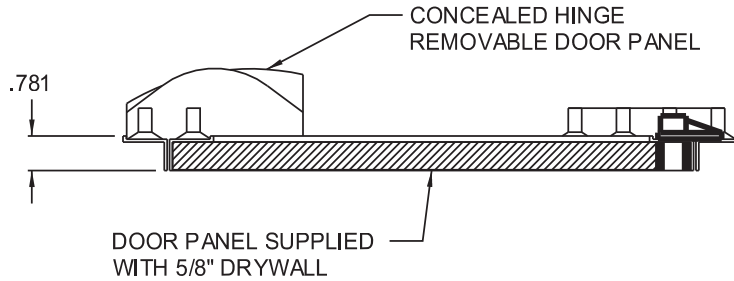


www.acudor.com
 U.S.A.: info@acudor.com / 800.722.0501
 CANADA: info@acudor.ca / 844.228.3671
 INTERNATIONAL: info@acudorintl.com
 (905) 428.2240

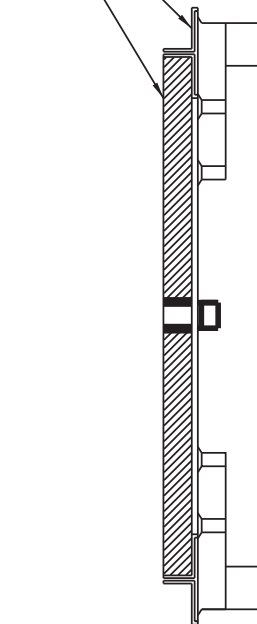
BAUCO BP-58

DRYWALL INSERT

QTY	NOMINAL SIZE	A	B	C	D	WALL/ CEILING OPENING	LOCK
	12 x 12 (305 x 305)	11.89 (302)	11.89 (302)	14.00 (356)	14.00 (356)	12.25 x 12.25 311 x 311	1
	18 x 18 (457 x 457)	17.89 (454)	17.89 (454)	20.00 (508)	20.00 (508)	18.25 x 18.25 464 x 464	2
	24 x 24 (610 x 610)	23.89 (607)	23.89 (607)	26.00 (660)	26.00 (660)	24.25 x 24.25 616 x 616	2
	24 x 36 (610 x 914)	35.89 (912)	23.89 (607)	26.00 (660)	38.00 (965)	24.25 x 36.25 616 x 921	2



DOOR PANEL AND FRAME MADE OF ALUM EXTRUSION .064 THK.



STANDARD FEATURES:

SCREW DRIVER CAM LATCH; REMOVABLE DOOR PANEL;
 UNIT IS SUPPLIED WITH 5/8" (OR 1/2") DRYWALL IN DOOR PANEL;
 ALUMINUM DOOR AND FRAME - MILL FINISH

OPTIONS: LOCK TYPE

- TAMPER RESISTANT TORX HEAD
- CONCEALED TOUCH LATCH
- CYLINDER LOCK & KEY

JOB NAME:

APPROVED BY:

CUSTOMER:

DATE: