



ACUDOR

www.acudor.com
U.S.A: info@acudor.com / 800.722.0501
CANADA: info@acudor.ca / 844.228.3671
INTERNATIONAL: info@acudorintl.com
(905) 428.2240

FB-5060-TD

RECESSED FOR TILE
FIRE RATED - FOR WALLS

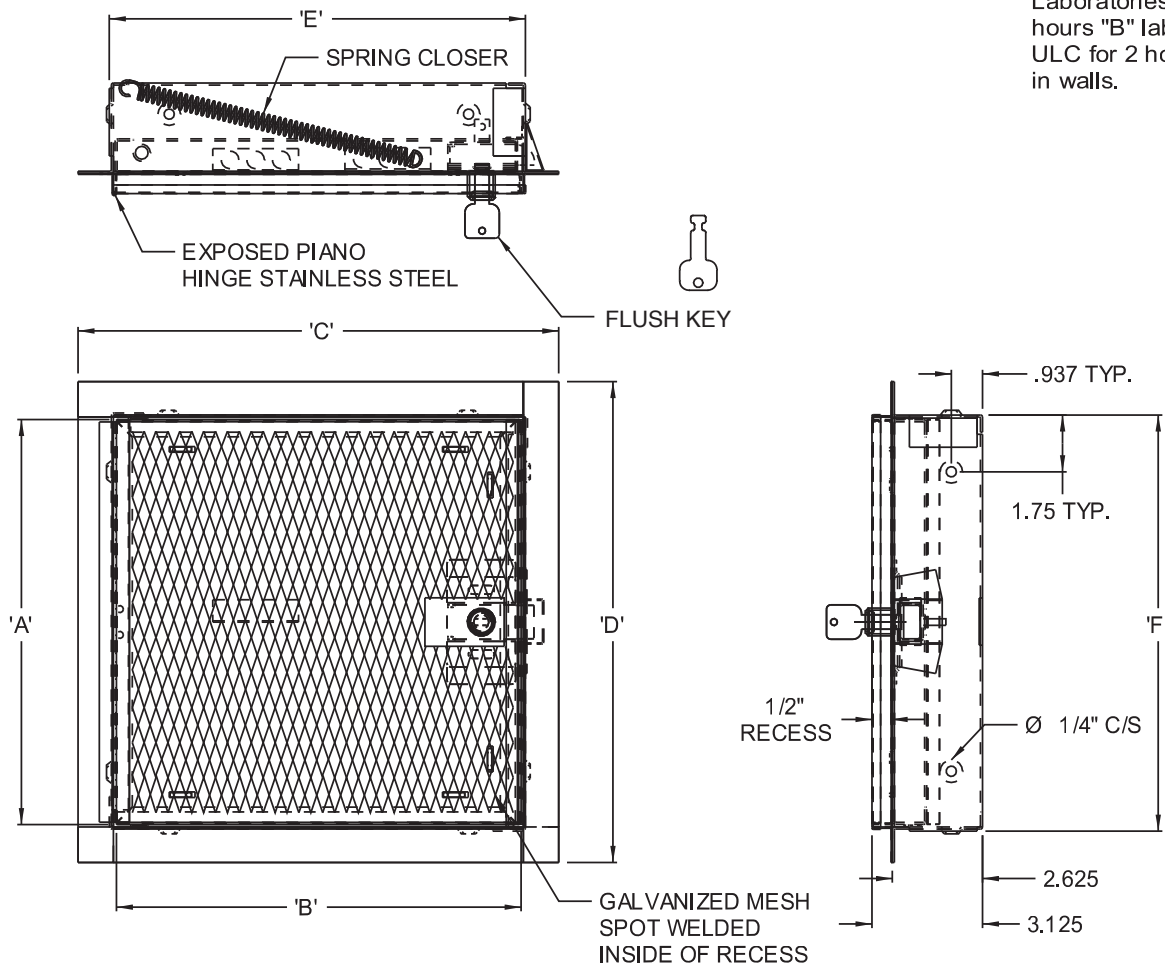
| QTY. | NOMINAL SIZE | A | B | C | D | E | F | LOCK |
|------|---------------------|-------------|-------------|----------|----------|-------------|-------------|------|
| | 12 x 12 (305 x 305) | 11.78 (299) | 11.78 (299) | 14 (356) | 14 (356) | 12.12 (308) | 12.12 (308) | 1 |
| | 16 x 16 (406 x 406) | 15.78 (401) | 15.78 (401) | 18 (457) | 18 (457) | 16.12 (409) | 16.12 (409) | 1 |
| | 18 x 18 (457 x 457) | 17.78 (452) | 17.78 (452) | 20 (508) | 20 (508) | 18.12 (460) | 18.12 (460) | 1 |
| | 24 x 24 (610 x 610) | 23.78 (604) | 23.78 (604) | 26 (660) | 26 (660) | 24.12 (613) | 24.12 (613) | 1 |
| | 24 x 36 (610 x 914) | 35.78 (908) | 23.78 (604) | 26 (660) | 38 (965) | 24.12 (613) | 36.12 (917) | 2 |
| | | | | | | | | |
| | | | | | | | | |

RECOMMENDED TILE ADHESIVE:

SUPER #3000 DRY MORTAR MANUFACTURED BY: VESUVIUS USA Corp.
 www.vesuvius.com OR AN INORGANIC, CEMENTITIOUS EQUIVALENT.

WALLS

Approved by Underwriters Laboratories (UL) for 1 1/2 hours "B" label in walls and ULC for 2 hours "B" label in walls.



STANDARD FEATURES:

UNIVERSAL SELF LATCHING BOLT- OPERATED BY FLUSH KEY/
 AND INSIDE TURN RELEASE.
 CARBON STEEL, PRIME COAT BAKED ENAMEL FINISH

OPTIONS:

LOCK TYPE

☐ RIM CYLINDER LOCK

MATERIAL

☐ STAINLESS STEEL
☐ OTHER

FINISH

☐ 2B MILL FINISH

ALL FIRE RATED:

SPECIAL SIZES CAN BE ORDERED, BUT BASIC CONSTRUCTION
 MUST REMAIN CONSTANT TO COMPLY WITH UL AND ULC REGULATIONS.

JOB NAME:

APPROVED BY:

CUSTOMER:

DATE: