

FRFD

FLOOR DOOR Fire Rated, Flush Diamond Plate

Application

- Maintains the fire rating of a 2 hour floor ceiling assembly
- Designed for interior applications

Product Features

- Flush aluminum diamond plate cover
- Warnock Hersey International 2 hour fire rating
- Tested to NFPA 288 ; ASTM E 119

FRFD Floor Door Specifications:

Material: Aluminum door & top frame ; Stainless steel bottom frame, hinges & hardware

Door: 1/4" aluminum diamond plate reinforced for live load of 150 lb/per sq. ft.

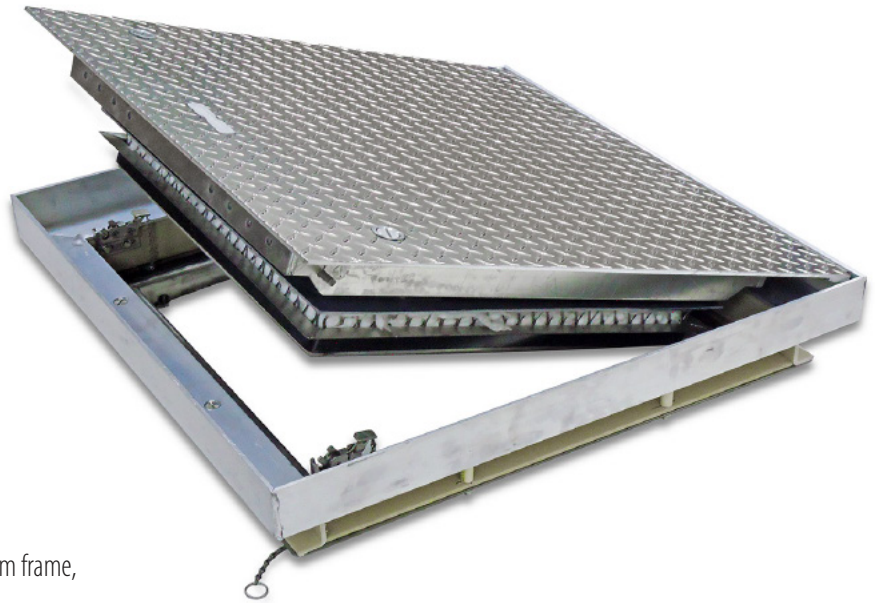
Frame: 3" x 3" x 1/4" aluminum top frame with thermal break 3 1/2" x 2" x 11 gauge stainless steel bottom frame

Insulation: Two - 1" thick layers of ceramic blanket insulation attached to bottom frame

Hinge: Type 316 stainless steel continuous piano hinge

Opening Device: Door panel opens to 90 degrees. Automatic hold open arm with red vinyl grip keeps door in open position to ensure safe egress. Stainless steel compression springs provide lift assistance. U.L. listed 165 degrees fusible link is provided for automatic closing and latching in the event of smoke or fire.

Latch: Stainless steel slam latch assembly with interior release



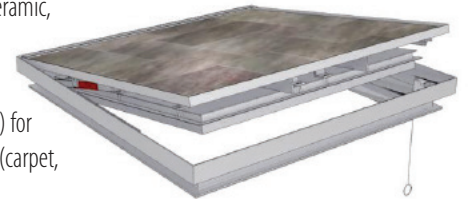
Available options:

FRFD-R

Recessed 1" (25.4mm) for thicker architectural flooring (ceramic, stone, terrazzo, etc.)

FRFD-R18

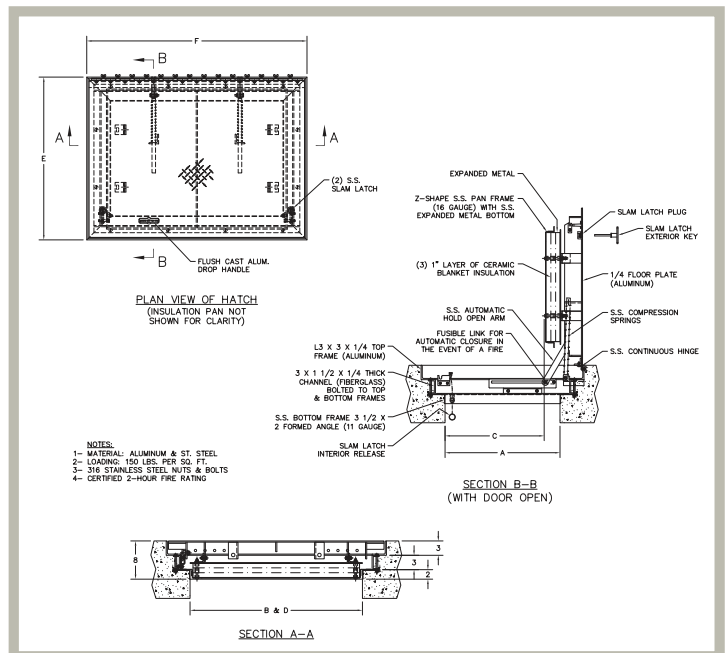
Recessed 1/8" (3.16mm) for thin composite flooring (carpet, vinyl, rubber, etc.)



FRFD STANDARD SIZES

(other sizes available upon request)

Nominal Door Size W&H		Weight per Door	
inches	mm	lbs.	kg.
24 x 24	610 x 610	80	36
24 x 36	610 x 914	140	63
24 x 48	610 x 1219	160	73
30 x 30	762 x 762	130	59
30 x 36	762 x 914	160	73
36 x 36	914 x 914	190	86
36 x 48	914 x 1219	240	109
42 x 42	1067 x 1067	250	113
48 x 48	1219 x 1219	280	127



For detailed specifications see submittal sheet