

5-Year
Warranty

Proudly Made in
the U.S.A.



ADA SOLUTIONS, INC.

**DETECTABLE WARNING SURFACES
FOR PEDESTRIAN CROSSINGS**

WAYFINDING PRODUCTS



*Service, Delivery and Price
Make ADA Solutions, Inc. the Obvious Choice*

***Proudly Made in
the U.S.A.***



DIRECTIONAL BAR TILE

**SURFACE MOUNT OR CAST-IN-PLACE
REPLACEABLE (WET-SET)**

Bar Tile and Guide Tile units shall be guaranteed in writing for a period of five (5) years from date of contract's final completion. The guarantee includes breakage and deformation of the Bar Tile and Guide Tile.

In stock colors



Dark Gray
36081

Brick Red
20109

White
37925

Black
37038

Yellow
33538

DIRECTIONAL BAR TILE – SURFACE MOUNT

Installation Procedure

Be sure to read and understand all of these instructions before you begin.

- A.** The installation area should be cleaned of all debris, oil and grease, making sure the area is completely free of moisture. ADA Bar Tile may be surface mounted on existing pre-cleaned substrate.
- B.** Lay out the Bar Tiles on the substrate as they will appear when installed.
- If required, the Bar Tiles may be cut using a table saw and carbide tipped blade. See web site for more details.
- C.** On the underside of the Bar Tile, place a $\frac{3}{8}$ " bead of adhesive along the perimeter and down the center of each tile. (Int.—Place a bead of adhesive along all flat surfaces on the underside of the Bar Tile) Adhesive yield: 4SF per 10 ounce cartridge. (1 cartridge/panel)
- D.** Set the Bar Tile in the installation area. Make all necessary adjustments prior to fastening.
- E.** Fasteners shall be installed in pre-formed fastener locations. Holes shall be drilled using a hammer drill with $\frac{1}{4}$ " x 2" min SDS bit. The drilled holes must be a minimum of 2" deep. Place fasteners in hole and hammer into place.
- If additional fasteners are required, use a $\frac{1}{2}$ ", five point, 82 degree countersink to add a new fastener location. Follow the same drilling method as used for installing the fastener.
- F.** Caulk around perimeter of entire installation using BASF NP1 or equivalent.
- All concrete dust present on the Bar Tile resulting from the drilling process must be cleaned off prior to using any caulking materials.

**Not recommended or warrantied for asphalt installation.*

PHYSICAL CHARACTERISTICS

Compressive Strength	28,900 psi	ASTM D 695
Flexural Strength	29,300 psi	ASTM D 790
Water Absorption	.07%	ASTM D 570
Slip Resistance	0.80+ Dry or Wet	ASTM C 1028
Flame Spread Index	20	ASTM E 84
Salt Spray	No Change (200 Hours)	ASTM B 117
Chemical Stain Testing	No Deterioration	ASTM D 543
Abrasion Resistance	549	ASTM C 501
Accelerated Weathering	Delta E<5.0 (2,000 hours)	ASTM G 155
Tensile Strength	11,600 psi	ASTM D 638
Load Bearing at 16,000 lbs	No Damage	AASHTO-H20
Adhesion to Conc. (20-180°)	No Delamination or Degradation	ASTM C 903
Freeze/Thaw/Heat	No Disintegration	ASTM C 1026



PRODUCT SIZES

6" x 24", 12" x 12", 24" x 24"
420mm x 840mm (Int.)

APPLICATION

Existing Concrete

**5-Year
Warranty**

BAR GEOMETRY

Bar Tile features $1\frac{1}{8}$ " long (nom.) x $\frac{1}{8}$ " wide bars at 3" on center (400mm long x 30mm wide bars at 80mm on center [Int.]). Bar Tile also features a non-slip surface.

BAR TILE DIMENSIONS

ADA Bar Tile: 6" x 24", 12" x 12", 24" x 24", (420mm x 840mm [Int.]).

MATERIAL

A durable exterior grade homogenous glass, carbon and fiberglass reinforced composite material which is colorfast and UV stable. The color of the Bar Tile unit is uniform throughout and does not rely on any type of paint coating to achieve color stability. Standard colors include: Federal Yellow, Brick Red, White, Dark Gray and Black.

INCIDENTALS

Fasteners: $\frac{1}{4}$ " x $1\frac{1}{8}$ ", composite sleeve anchor with stainless steel pin.

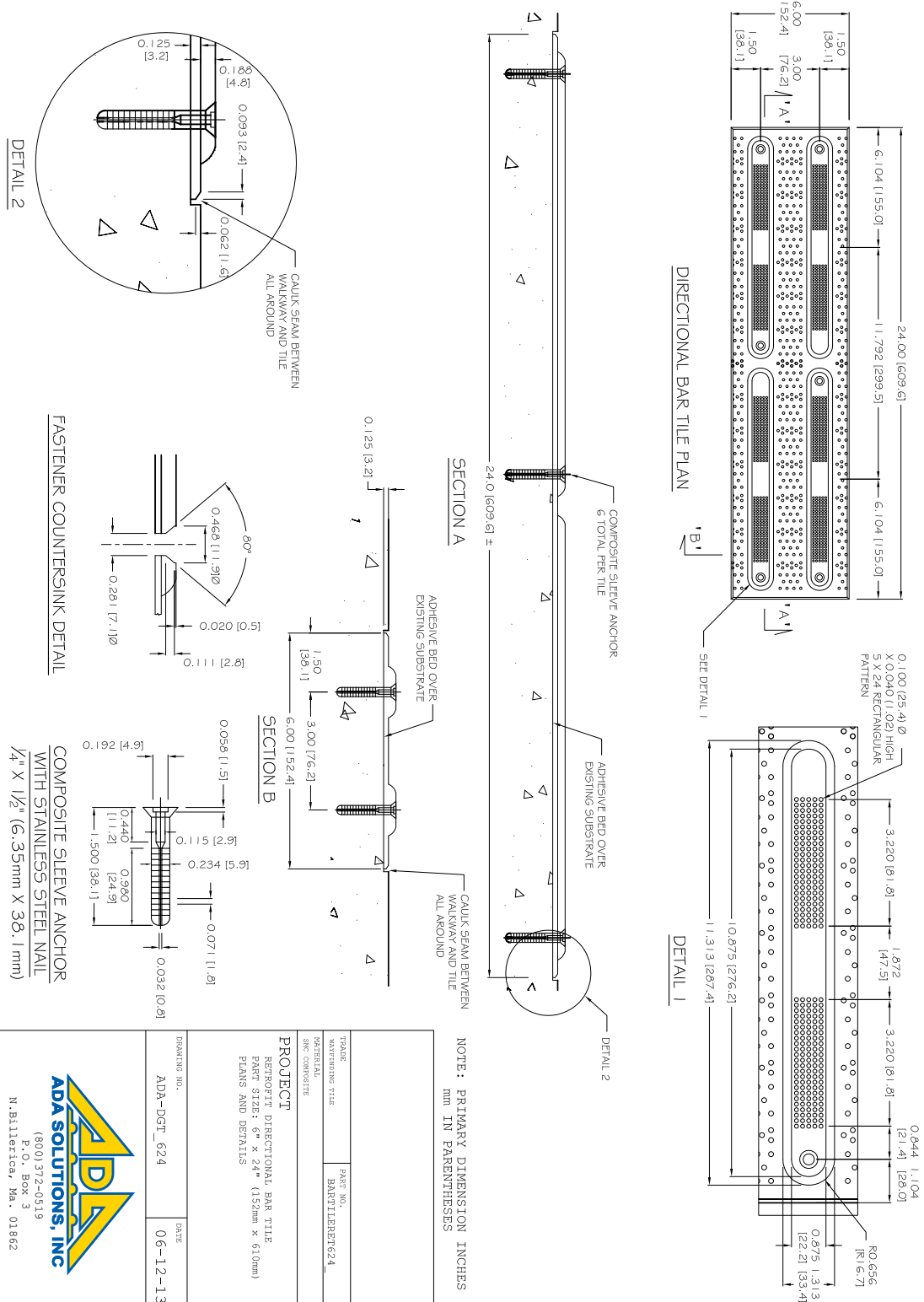
Adhesive: One component structural elastomeric adhesive.

Sealant: BASF NP1, Sikaflex 1A, or equivalent.

**View additional photos, drawings and specifications on our website:
www.adatale.com. Call (800) 372-0519 with any questions.**

US Patents*
***www.adatale.com/patents**

6"x24" (152.40 x 609.60mm) Tile
3.15" (80mm) Bar Spacing

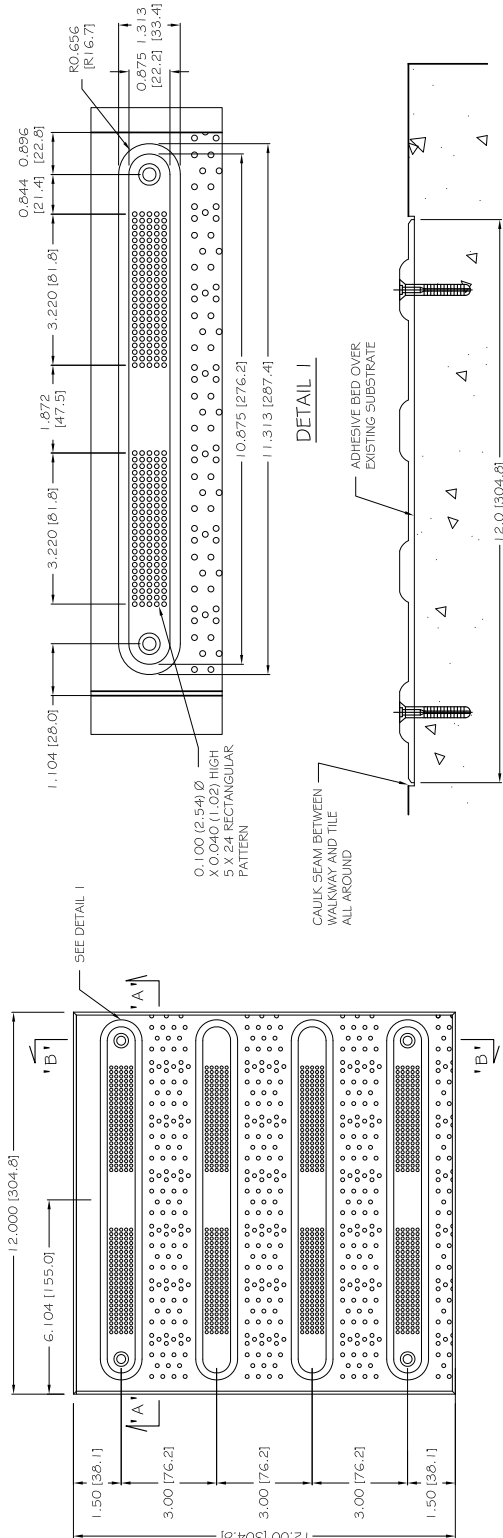


NOTE: PRIMARY DIMENSION INCHES
mm IN PARENTHESES

TRADE	PART NO.
AWARDING TITLE	BARTLETTRE764
MATERIAL ONE COMPONENT	
PROJECT RETROFIT DIRECTIONAL BAR TILE PART SIZE: 6" x 24" (152mm x 610mm) PLANS AND DETAILS	
DRAWING NO.	DATE
ADA-DGT_624	06-12-13

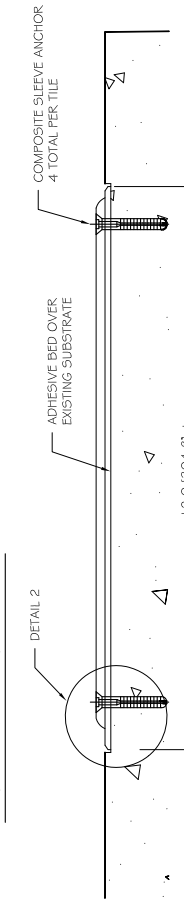
DIRECTIONAL BAR TILE - SURFACE MOUNT

12"x12" (304.80 x 304.80mm) Tile
3" (76.21mm) Bar Spacing

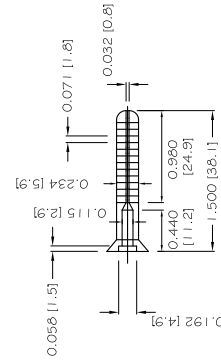
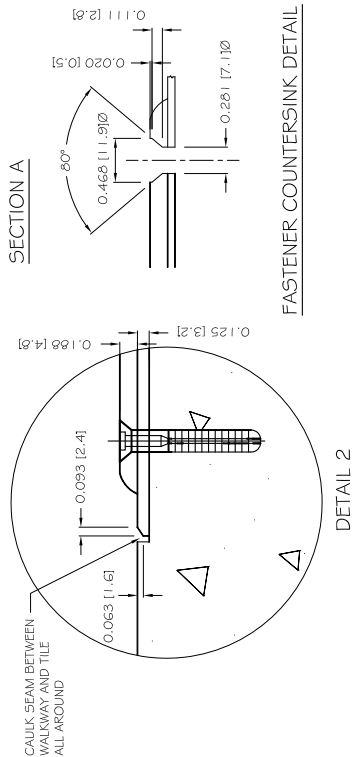


DIRECTIONAL BAR TILE PLAN

SECTION B



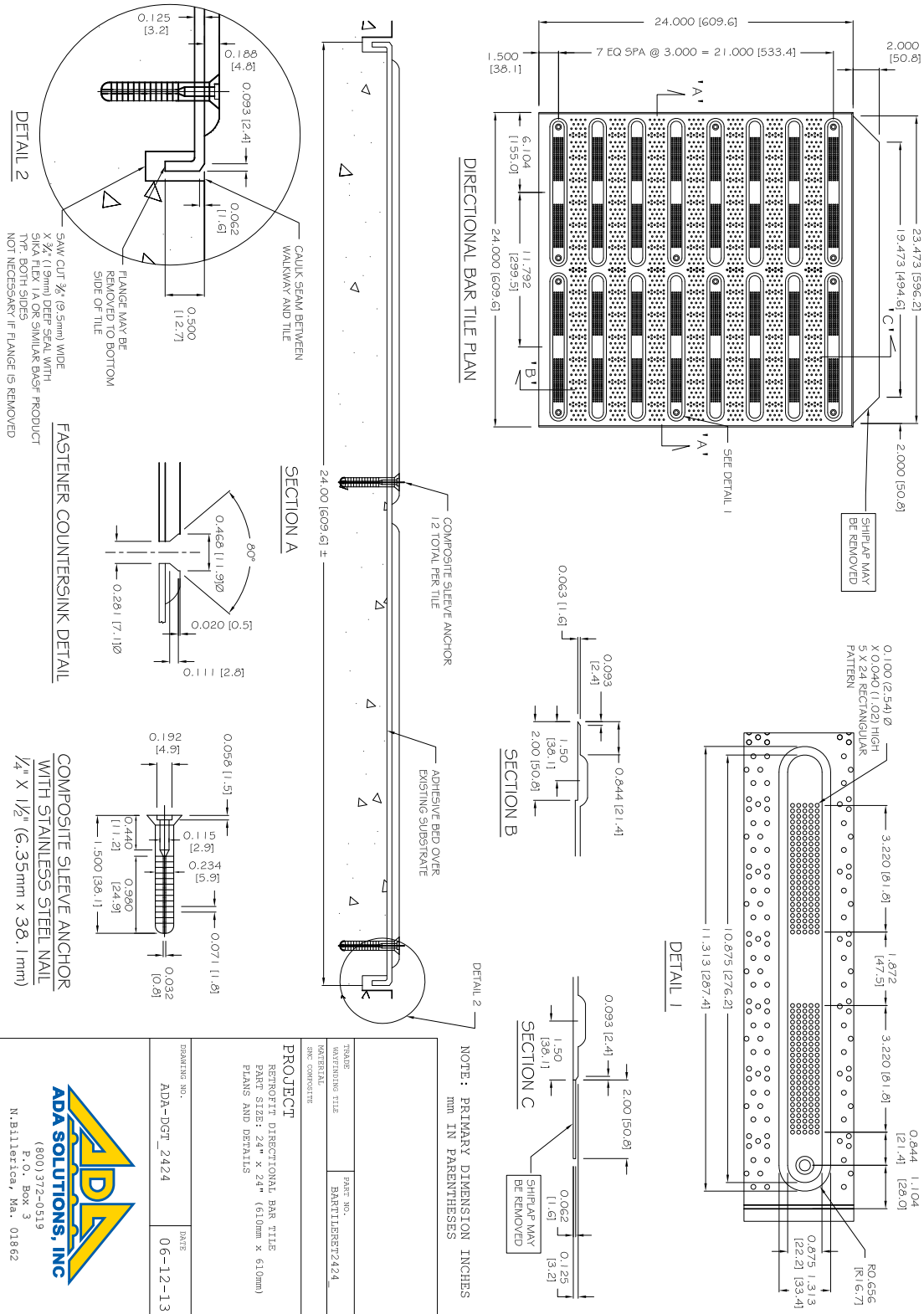
SECTION A



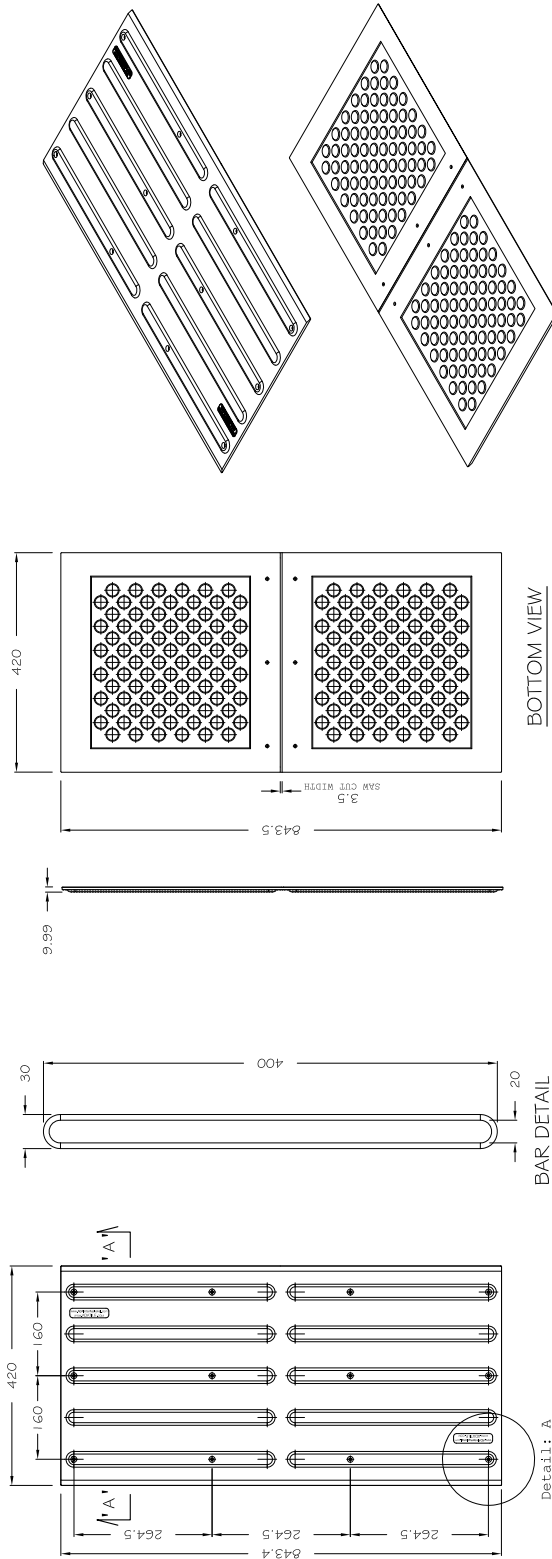
NOTE: PRIMARY DIMENSION INCHES
 mm IN PARENTHESES

TRADE	WALKWAY TILE	PART NO.	BARTILLERET1212
MATERIAL	SBC COMPOSITE		
PROJECT	RETROFIT DIRECTIONAL BAR TILE PART SIZE: 12" x 12" (305mm x 305mm) PLANS AND DETAILS		
DRAWING NO.	ADA-DGT_1212	DATE	06-12-13
 (800) 372-0519 P.O. Box 3 N.Billerica, Ma. 01862			


24"x24" (609.60 x 609.60mm) Tile
3" (76.21mm) Bar Spacing



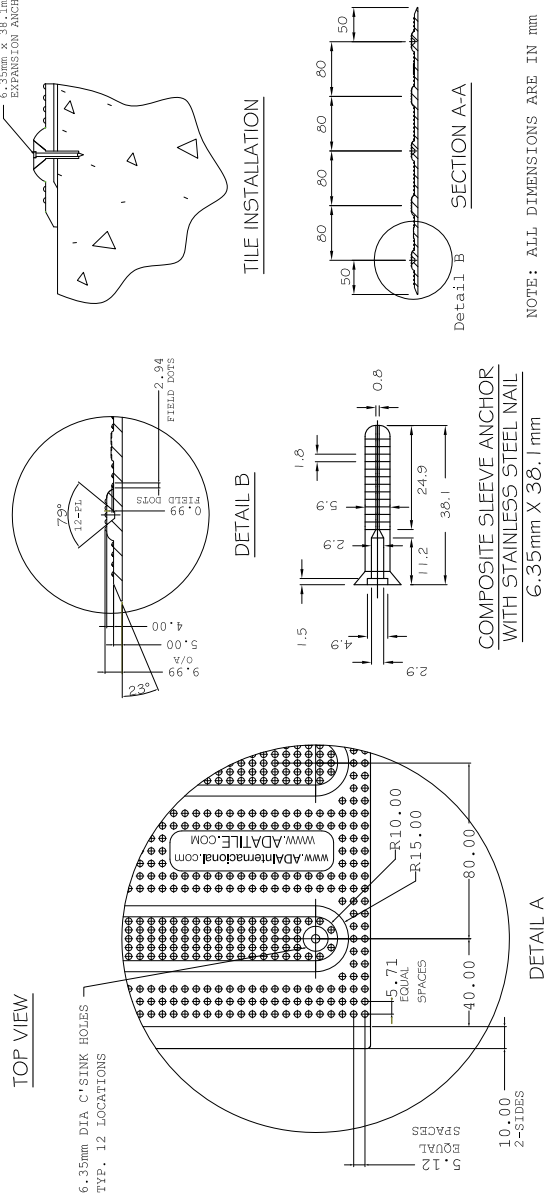
420.0 x 840.0mm (16.536"x33.071") Tile
76.21mm (3") Bar Spacing



TRADE	PART NO.	SURFACE APPLIED DIRECTIONAL BAR TILE PART SIZE: 420MM x 840MM PLANS AND DETAILS	DATE 06-12-13
MANUFACTURING TITLE	BARTILE420840		
MATERIAL			
SNC COMPOSITE			
PROJECT		GRADING NO. ADA-CRET_420840	



(800) 372-0519
 P.O. Box 3
 N.Billerica, Ma. 01862



DIRECTIONAL BAR TILE - REPLACEABLE

Installation Procedure

Be sure to read and understand all of these instructions before you begin.

- A.** The physical characteristics of the concrete shall be as specified in the contract documents while maintaining a slump range of 4-7 inches to permit the solid placement of the ADA Bar Tile in the wet cement.
 - B.** The concrete shall be poured and finished level, true and smooth to the required dimensions prior to the placement of the Bar Tile.
 - C.** Working in a grid pattern, tamp the Bar Tile into the wet concrete using a rubber mallet and a piece of wood. Continue this process until all of the air has been released, and the Bar Tile surface is flush with the surrounding area. **IMPORTANT: Avoid striking the surface of the Bar Tile directly.**
 - D.** Following the placement, the Bar Tile elevation should be checked to the adjacent surface with a straight edge. The Bar Tile elevation should be consistent with the Contract Drawings and Specifications. Any required adjustments must be made prior to the time when the concrete begins to set.
- E. IMPORTANT NOTICE TO INSTALLER:** To facilitate maintenance and to allow for expansion and contraction, after tile is installed, use a 1/4" finish edge trowel around entire perimeter. On a continuous run, be sure to space each unit 1/8" apart.

- F.** During and after the Bar Tile installation, as well as the concrete curing stage, no walking or external forces can be placed on the Bar Tile. The area must be protected from pedestrian traffic until concrete is cured. The Bar Tile will be ready for pedestrian traffic within 24 hours.

Replacement Procedure

- A.** Remove the existing 1/4" x 1 1/2" SS FH bolt from each anchor location on the Bar Tile with a screw driver. Save & reuse.
- B.** Tap around all sides of the Bar Tile and across the middle with a rubber mallet, working in a grid pattern.
- C.** Pry the existing Bar Tile from the concrete with a small prybar, working around the edges until it can be lifted cleanly away.
- D.** Be sure to remove all small debris and dust from the existing impression in the concrete. **IMPORTANT: Take care not to get debris into anchor locations.**
- E.** Replace new Bar Tile into impression in concrete. Lightly tamp down the Bar Tile with a rubber mallet and a piece of wood. Continue this process until the Bar Tile is set firmly into existing impression in concrete. **IMPORTANT: Avoid striking the Bar Tile directly.**
- F.** Bolt existing 1/4" x 1 1/2" SS FH bolts back into each anchor location on new Bar Tile.

**Not recommended or warranted for asphalt installation.*

**5-Year
Warranty**



PRODUCT SIZES

6" x 24", 12" x 12", 24" x 24"
420mm x 840mm (Int.)

APPLICATION

Fresh Pour
Concrete Ramps & Replacement

US Patents*

[*www.adatile.com/patents](http://www.adatile.com/patents)

BAR GEOMETRY

Bar Tile features 11 3/8" long (nom.) x 1 3/8" wide bars at 3" on center (400mm long x 30mm wide bars at 80mm on center [Int.]). Bar Tile also features a non-slip surface.

BAR TILE DIMENSIONS

ADA Bar Tile: 6" x 24", 12" x 12", 24" x 24", (420mm x 840mm [Int.]).

HARDWARE

1/4" x 1 1/2" SS FH bolts with concrete inserts.

MATERIAL

A durable exterior grade homogenous glass, carbon and fiberglass reinforced composite material which is colorfast and UV stable. The color of the Bar Tile unit is uniform throughout and does not rely on any type of paint coating to achieve color stability. Standard colors include: Federal Yellow, Brick Red, White, Dark Gray and Black.

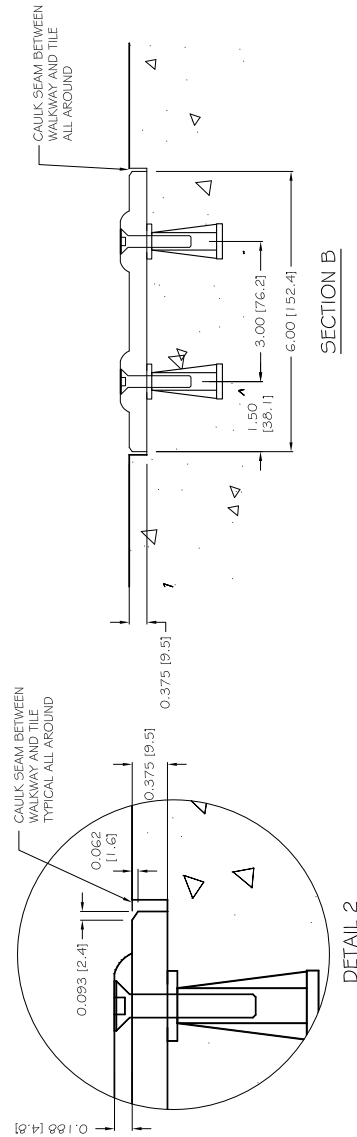
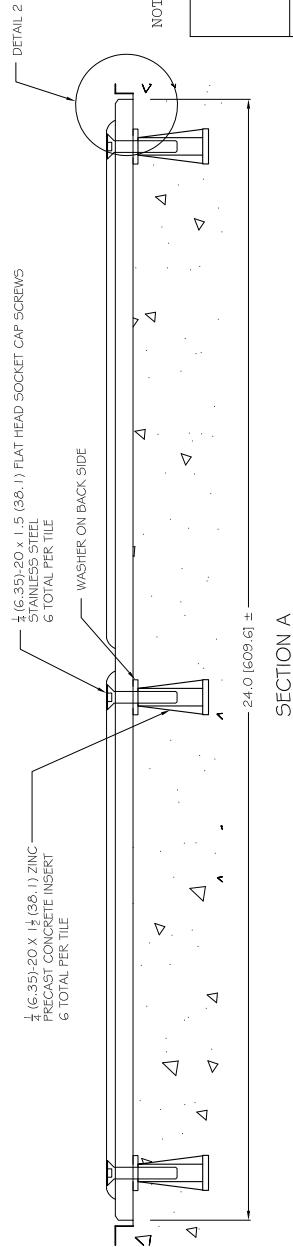
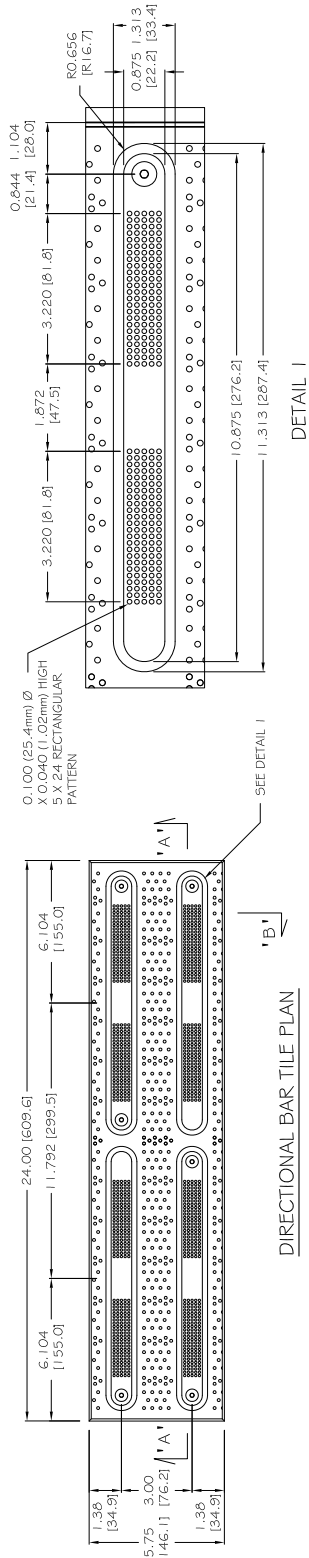
PHYSICAL CHARACTERISTICS

Compressive Strength	28,900 psi	ASTM D 695
Flexural Strength	29,300 psi	ASTM D 790
Water Absorption	.07%	ASTM D 570
Slip Resistance	0.80+ Dry or Wet	ASTM C 1028
Flame Spread Index	20	ASTM E 84
Salt Spray	No Change (200 Hours)	ASTM B 117
Chemical Stain Testing	No Deterioration	ASTM D 543
Abrasion Resistance	549	ASTM C 501
Accelerated Weathering	Delta E<5.0 (2,000 hours)	ASTM G 155
Tensile Strength	11,600 psi	ASTM D 638
Load Bearing at 16,000 lbs	No Damage	AASHTO-H20
Freeze/Thaw/Heat	No Disintegration	ASTM C 1026


**View additional photos, drawings and specifications on our website:
www.adatile.com. Call (800) 372-0519 with any questions.**

DIRECTIONAL BAR TILE - REPLACEABLE

6"x24" (152.40 x 609.60mm) Tile
3" (76.21mm) Bar Spacing

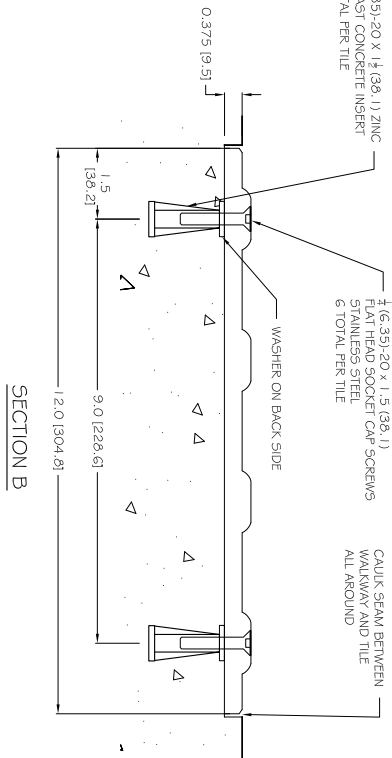
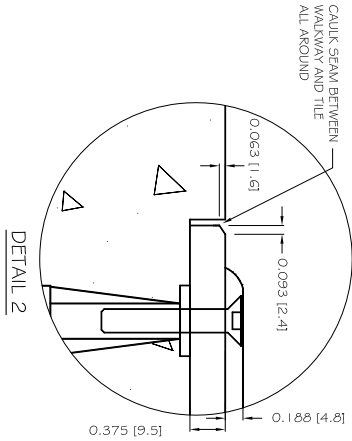
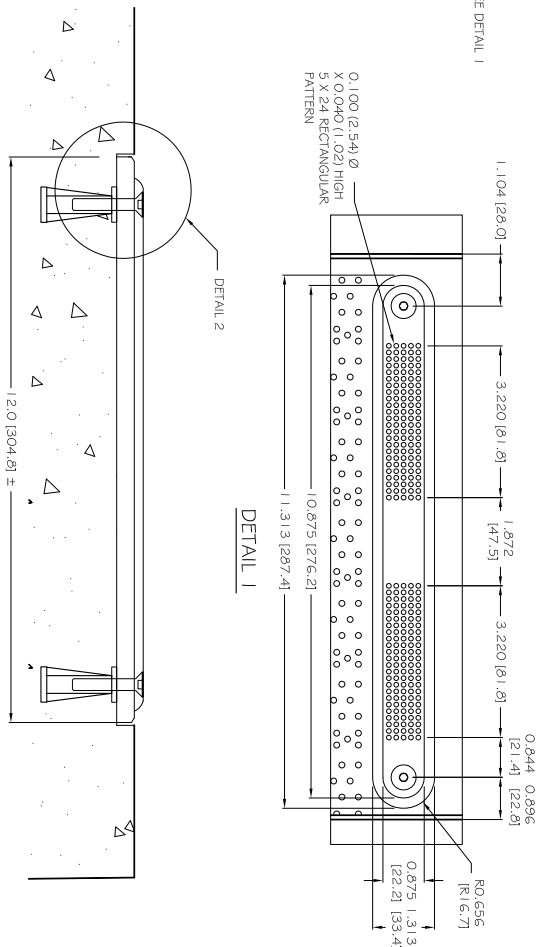
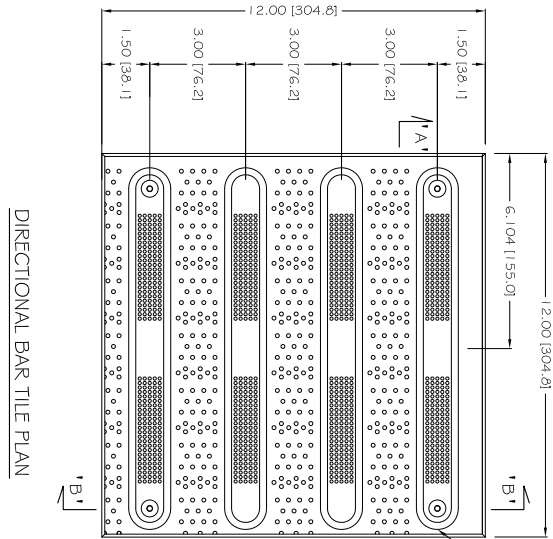


NOTE: PRIMARY DIMENSION INCHES
mm IN PARENTHESES

TRADE	WALKING TILE	PART NO.	BARTILERE624_375
MATERIAL	SIC CONCRETE		
PROJECT REP DIRECTIONAL BAR TILE PART SIZE: 6" x 24" (152mm x 610mm) 6-BOLT LOCATIONS 0.375 (9.5) BODY THICKNESS PLANS AND DETAILS			
DRAWING NO.	ADA-DGTREP_624	DATE	06-12-13
 ADA SOLUTIONS, INC. (800) 372-0519 P.O. Box 3 N. Billerica, Ma. 01862			

DIRECTIONAL BAR TILE - REPLACEABLE

12"x12" (304.80 x 304.80mm) Tile
3" (76.21mm) Bar Spacing



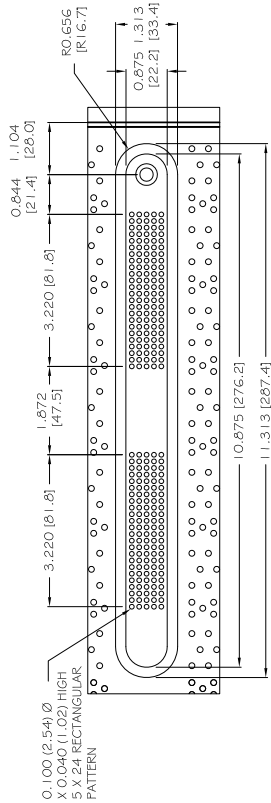
SECTION A

NOTE: PRIMARY DIMENSION INCHES
 mm IN PARENTHESES

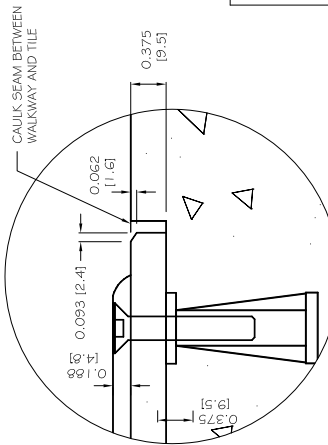
<table border="1"> <tr> <td>TRADE</td><td>PART NO.</td></tr> <tr> <td>WALKWAY TILE</td><td>BAR-TILE-REP1212-375</td></tr> <tr> <td>MATERIAL</td><td>SPC COMPOSITE</td></tr> </table>	TRADE	PART NO.	WALKWAY TILE	BAR-TILE-REP1212-375	MATERIAL	SPC COMPOSITE	<p>PROJECT</p> <p>REP DIRECTIONAL BAR TILE</p> <p>PART SIZE: 12" x 12" (305mm x 305mm)</p> <p>4-BOLT LOCATIONS</p> <p>0.375 (9.5) BODY THICKNESS</p> <p>PLANS AND DETAILS</p> <p>DRAWING NO.</p> <p>ADA-DGTREP_1212</p> <p>DATE</p> <p>06-12-13</p> <p>ADA SOLUTIONS, INC</p> <p>(800) 372-0519</p> <p>P.O. Box 3</p> <p>N. Billerica, Ma. 01862</p>
TRADE	PART NO.						
WALKWAY TILE	BAR-TILE-REP1212-375						
MATERIAL	SPC COMPOSITE						

DIRECTIONAL BAR TILE - REPLACEABLE

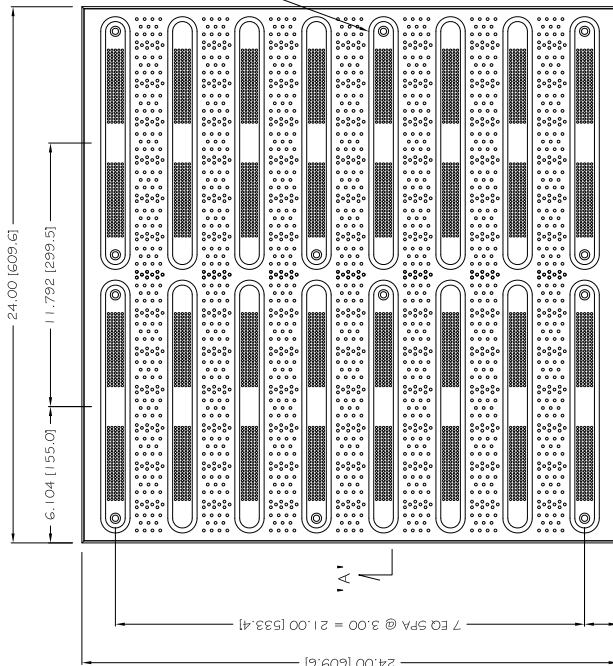
24"x24" (609.60 x 609.60mm) Tile
3" (76.21mm) Bar Spacing



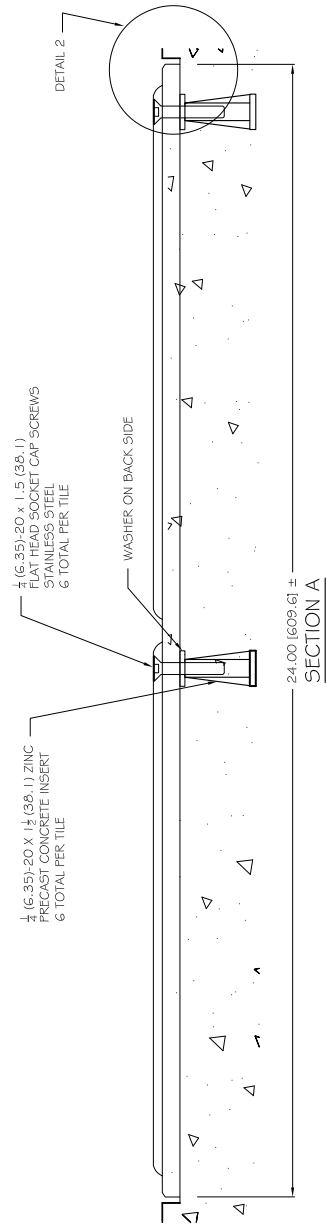
DETAIL 1




DETAIL 2



DIRECTIONAL BAR TILE PLAN



NOTE: PRIMARY DIMENSION INCHES
mm IN PARENTHESES

TRADE	WALKWAY TILE	PART NO.	BARTILLREP2424.375
MATERIAL	SEE COMPOSITE		
PROJECT			
REP DIRECTIONAL BAR TILE			
PART SIZE: 24" x 24" (610mm x 610mm)			
12-BOLT LOCATIONS			
0.375 (9.5) BODY THICKNESS			
PLANS AND DETAILS			
DRAWING NO.	ADA-DGTREP_2424	DATE	06-12-13
 ADA SOLUTIONS, INC. (800) 372-0519 P.O. Box 3 N. Billerica, Ma. 01862			

GUIDE TILE – SURFACE MOUNT

Installation Procedure

Be sure to read and understand all of these instructions before you begin.

- A.** The installation area should be cleaned of all debris, oil and grease, making sure the area is completely free of moisture. ADA Guide Tile may be surface mounted on existing pre-cleaned substrate.
- B.** Lay out the Guide Tiles on the substrate as they will appear when installed.
- If required, the Guide Tiles may be cut using a table saw and carbide tipped blade. See web site for more details.
- C.** Create two 3/8" wide x 1/4 deep x 3" on-center saw cuts in the existing concrete substrate to receive the Guide Tile embedment flanges. Fill the sawcuts to appropriate level with elastomeric adhesive.
- D.** On the underside of the Guide Tile, place a 3/8" bead of adhesive along the perimeter and down the center of each tile. Adhesive yield: 4SF per 10 ounce cartridge. (1 cartridge/panel)
- E.** Set the Guide Tile in the installation area. Make all necessary adjustments prior to fastening.
- F.** Caulk around perimeter of entire installation using BASF NP1 or equivalent.
- All concrete dust present on the Guide Tile resulting from the drilling process must be cleaned off prior to using any caulking materials.

**Not recommended or warrantied for asphalt installation.*

PHYSICAL CHARACTERISTICS

Compressive Strength	28,900 psi	ASTM D 695
Flexural Strength	29,300 psi	ASTM D 790
Water Absorption	.07%	ASTM D 570
Slip Resistance	0.80+ Dry or Wet	ASTM C 1028
Flame Spread Index	20	ASTM E 84
Salt Spray	No Change (200 Hours)	ASTM B 117
Chemical Stain Testing	No Deterioration	ASTM D 543
Abrasion Resistance	549	ASTM C 501
Accelerated Weathering	Delta E <5.0 (2,000 hours)	ASTM G 155
Tensile Strength	11,600 psi	ASTM D 638
Load Bearing at 16,000 lbs	No Damage	AASHTO-H20
Adhesion to Conc. (20-180°)	No Delamination or Degradation	ASTM C 903
Freeze/Thaw/Heat	No Disintegration	ASTM C 1026



PRODUCT SIZES
4" x 24"

APPLICATION
Existing Concrete

GROOVE GEOMETRY

Guide Tile features a full length 5/8" wide by 1/16" deep (15.9mm x 1.6mm [Int.]) groove centered on a 4" wide x 1/4" thick (101.6mm x 7.9mm [Int.]) sloped non-slip surface.

GUIDE TILE DIMENSIONS

Guide Tile is available in a 4" x 24" (101.6mm x 609.6mm [Int.]) size. Guide Tile has two 1" (nom.) deep inset flanges – each with three 1/2" diameter embedment holes.

MATERIAL

A durable exterior grade homogenous glass, carbon and fiberglass reinforced composite material which is colorfast and UV stable. The color of the Guide Tile is uniform throughout and does not rely on any type of paint coating to achieve color stability. Standard colors include: Federal Yellow, Brick Red, White, Dark Gray and Black.

INCIDENTALS

Adhesive: One component structural elastomeric adhesive.

Sealant: BASF NP1, Sikaflex 1A, or equivalent.

*View additional photos, drawings and specifications on our website:
www.adatile.com. Call (800) 372-0519 with any questions.*

GUIDE TILE - REPLACEABLE

Installation Procedure

Be sure to read and understand all of these instructions before you begin.

- A.** The physical characteristics of the concrete shall be as specified in the contract documents while maintaining a slump range of 4-7 inches to permit the solid placement of the ADA Guide Tile in the wet cement.
- B.** The concrete shall be poured and finished level, true and smooth to the required dimensions prior to the placement of the Guide Tile.
- C.** Working in a grid pattern, tamp the Guide Tile into the wet concrete using a rubber mallet and a piece of wood. Continue this process until all of the air has been released, and the Guide Tile surface is flush with the surrounding area. **IMPORTANT: Avoid striking the surface of the Guide Tile directly.**
- D.** Following the placement, the Guide Tile elevation should be checked to the adjacent surface with a straight edge. The Guide Tile elevation should be consistent with the Contract Drawings and Specifications. Any required adjustments must be made prior to the time when the concrete begins to set.

E. IMPORTANT NOTICE TO INSTALLER: *To facilitate maintenance and to allow for expansion and contraction, after tile is installed, use a 1/4" finish edge trowel around entire perimeter. On a continuous run, be sure to space each unit 1/8" apart.*

- F.** During and after the Guide Tile installation, as well as the concrete curing stage, no walking or external forces can be placed on the Guide Tile. The area must be protected from pedestrian traffic until concrete is cured. The Guide Tile will be ready for pedestrian traffic within 24 hours.

Replacement Procedure

- A.** Remove the existing 1/4" x 1 1/2" SS FH bolt from each anchor location on the Guide Tile with a screw driver. Save & reuse.
- B.** Tap around all sides of the Guide Tile and across the middle with a rubber mallet, working in a grid pattern.
- C.** Pry the existing Guide Tile from the concrete with a small prybar, working around the edges until it can be lifted cleanly away.
- D.** Be sure to remove all small debris and dust from the existing impression in the concrete. **IMPORTANT: Take care not to get debris into anchor locations.**
- E.** Replace new Guide Tile into impression in concrete. Lightly tamp down the Guide Tile with a rubber mallet and a piece of wood. Continue this process until the Guide Tile is set firmly into existing impression in concrete. **IMPORTANT: Avoid striking the surface of Guide Tile directly.**
- F.** Bolt existing 1/4" x 1 1/2" SS FH bolts back into each anchor location on new Guide Tile.

**Not recommended or warrantied for asphalt installation.*

**View additional photos, drawings and specifications on our website: www.adatile.com.
Call (800) 372-0519 with any questions.**



PRODUCT SIZES
4" x 24"

APPLICATION
Fresh Pour
Concrete Replacement

US Patents*
[*www.adatile.com/patents](http://www.adatile.com/patents)

GROOVE GEOMETRY

Guide Tile features a full length 5/8" wide by 1/16" deep (15.9mm x 1.6mm [Int.]) groove centered on a 4" wide x 1/4" thick (101.6mm x 7.9mm [Int.]) sloped non-slip surface.

GUIDE TILE DIMENSIONS

Guide Tile is available in a 4" x 24" (101.6mm x 609.6mm [Int.]) size. Replaceable Guide Tile has no flanges.

HARDWARE

1/4" x 1 1/2" SS FH bolts with concrete inserts.

**5-Year
Warranty**

MATERIAL

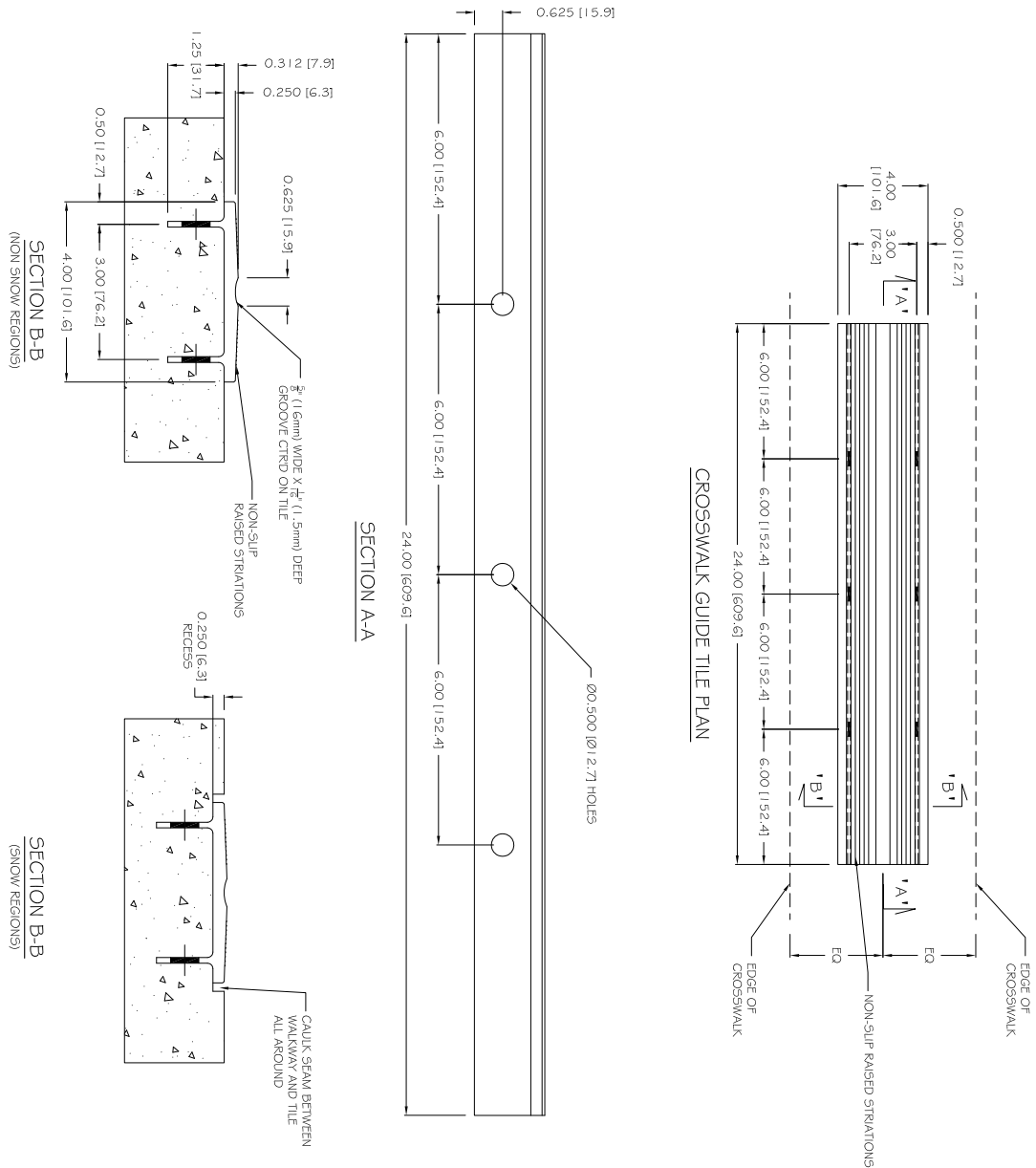
A durable exterior grade homogenous glass, carbon and fiberglass reinforced composite material which is colorfast and UV stable. The color of the Guide Tile is uniform throughout and does not rely on any type of paint coating to achieve color stability. Standard colors include: Federal Yellow, Brick Red, White, Dark Gray and Black.

PHYSICAL CHARACTERISTICS

Compressive Strength	28,900 psi	ASTM D 695
Flexural Strength	29,300 psi	ASTM D 790
Water Absorption	.07%	ASTM D 570
Slip Resistance	0.80+ Dry or Wet	ASTM C 1028
Flame Spread Index	20	ASTM E 84
Salt Spray	No Change (200 Hours)	ASTM B 117
Chemical Stain Testing	No Deterioration	ASTM D 543
Abrasion Resistance	549	ASTM C 501
Accelerated Weathering	Delta E<5.0 (2,000 hours)	ASTM G 155
Tensile Strength	11,600 psi	ASTM D 638
Load Bearing at 16,000 lbs	No Damage	AASHTO-H20
Freeze/Thaw/Heat	No Disintegration	ASTM C 1026

4"x24" (101.60 x 609.60mm) Surface Mount Tile

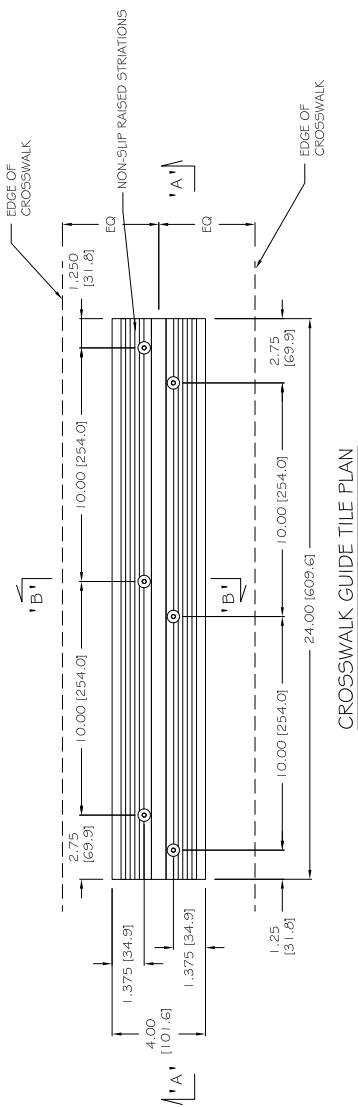
5/8" x 1/16" (15.88mm x 1.58mm) Deep Groove



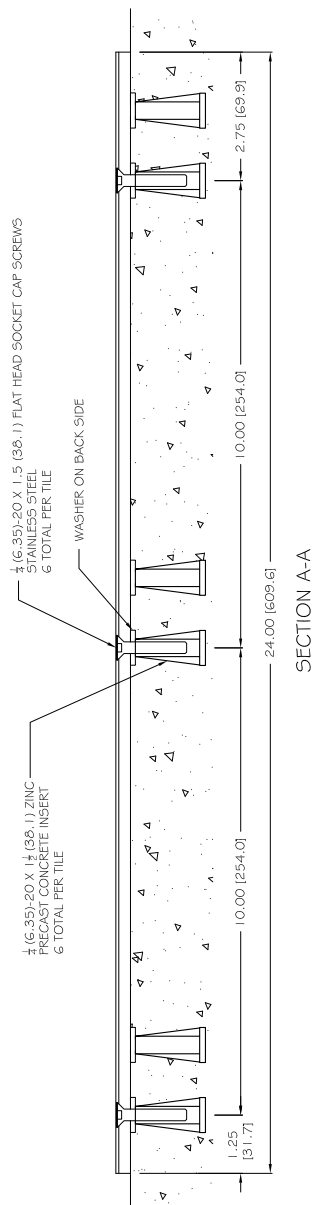
NOTE: PRIMARY DIMENSION INCHES
mm IN PARENTHESES

TRADE WALKING TILE	PART NO. GUIDETILE424
MATERIAL SBC COMPOSITE	
PROJECT CTR CROSSWALK GUIDE TILE PART SIZE: 4" x 24" (102mm x 610mm) CAST IN PLACE PLANS AND DETAILS	
DRAWING NO. ADA-CGT_424	DATE 06-12-13
ADA SOLUTIONS, INC (800) 372-0519 P.O. Box 3 N. Billerica, Ma. 01862	

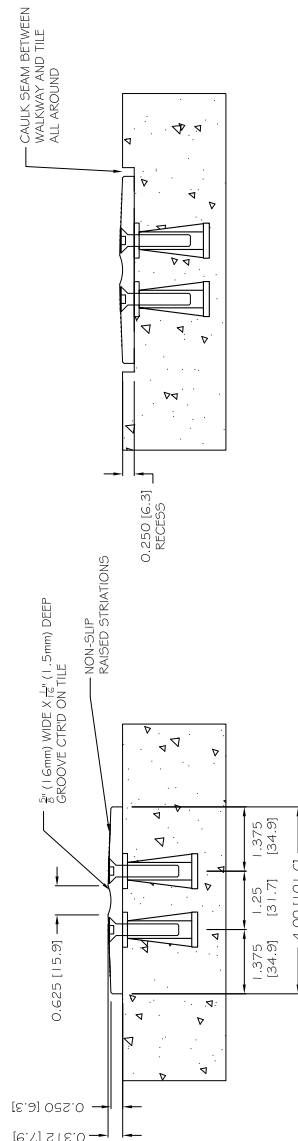
4"x24" (101.60 x 609.60mm) Replaceable (Wet-Set) Tile
5/8" x 1/16" (15.88mm x 1.58mm) Deep Groove



CROSSWALK GUIDE TILE PLAN



SECTION A-A



SECTION B-B
(NON SNOW REGIONS)

SECTION B-B
(SNOW REGIONS)

NOTE: PRIMARY DIMENSION INCHES
mm IN PARENTHESES

TRADE	PART NO.	DATE
MANUFACTURING TITLE	GUIDETITLEREP424	
MATERIAL	6-BOLT LOCATIONS PLANS AND DETAILS	
PROJECT REF CROSSWALK GUIDE TITLE PART SIZE: 4" x 24" (102mm x 610mm)		
SMC COMPOSITE		06-12-13 ADA-CGTREP_424
DRAWING NO.		



Wherever you go...
There we are™

- INDUSTRY LEADING SERVICE, DELIVERY AND PRICE
- ONE PIECE APPLICATION
- TIME-SAVING INSTALLATION
- CAST-IN-PLACE REPLACEABLE
- RADIUS REPLACEABLE (WET-SET)
- RADIUS SURFACE MOUNT
- SURFACE MOUNT (RETROFIT)
- CAST-IN-PLACE (WET-SET)
- BAR TILE SURFACE MOUNT
- BAR TILE REPLACEABLE (WET-SET)
- GUIDE TILE
- ADAAG COMPLIANT
- UNIFORM COLOR THROUGHOUT

PRODUCT INFORMATION / SUBMITTAL