



Wherever you go,
There we are®

IRON DOME®

CAST IRON (WET-SET)

*Proudly Made in
the U.S.A.*



WINDPROOF

SOLUTIONS INC
DATELINE, CT
872-0519

**15-Year
Warranty**



Installation Procedure

Be sure to read and understand all of these instructions before you begin.

- A.** The physical characteristics of the concrete shall be as specified in the contract documents while maintaining a slump range of 4-7 to permit the solid placement of the Tactile Unit in the wet concrete.
- B.** The concrete shall be poured and finished level, true and smooth to the required dimensions prior to the placement of the Tactile Unit.
- C.** Place the Tactile Unit 6-8 inches from the curb line. Working in a grid pattern, tamp the Tactile Unit into the wet concrete using a rubber mallet. Continue this process until all of the air has been released, and the Tactile Unit surface is flush with the surrounding area.
- D.** Following the placement, the Tactile Unit elevation should be checked to the adjacent surface with a straight edge. The Tactile Unit elevation should be consistent with the contract drawings and specifications. Any required adjustments must be made prior to the time when the concrete begins to set.



E. IMPORTANT NOTICE TO INSTALLER:
To allow for expansion and contraction, after Tactile Unit is installed, use a 1/4" finish edge trowel around entire perimeter.

- F.** During and after the Tactile Unit installation, as well as the concrete curing stage, no walking or external forces can be placed on the Tactile Unit. The area must be protected from pedestrian traffic until concrete is cured. The Tactile Warning Surface will be ready for pedestrian traffic within 2-4 hours.



PRODUCT SIZES
12" x 24", 24" x 24"
24" x 30"
15' Wedge,
20', 25', 30'

APPLICATION
Fresh Pour
Concrete Ramps

15-Year
Warranty

For cutting instructions,
go to ADATILE.com/castiron

View additional photos, drawings, specifications and products on our website:
www.adatile.com. Call (800) 372-0519 with any questions.

Inline Dome Pattern

DOME GEOMETRY

In accordance with ADA Regulations for Detectable Warning on Curb Ramps: Raised truncated domes with a diameter of nominal 0.9", a height of nominal 0.2", and a center to center spacing of 1.6" minimum and 2.4" maximum.

PANEL DIMENSIONS

Tactile Units are available in 12" x 24", 24" x 24" and 24" x 30"; as well as Wedge Units in 15', 20', 25', and 30'. Tactile Units measure 0.38" nominal thickness.

MATERIAL

A durable, exterior grade cast iron. Recommended to be installed in their natural, unfinished state. This ensures the most reliable, long-term performance and aesthetic appeal. Unfinished Tactile Units will develop a permanent patina. For superior tactile mobility, truncated domes have a center to center (horizontal and vertical) spacing of 2.40 inches.

INSTALLATION

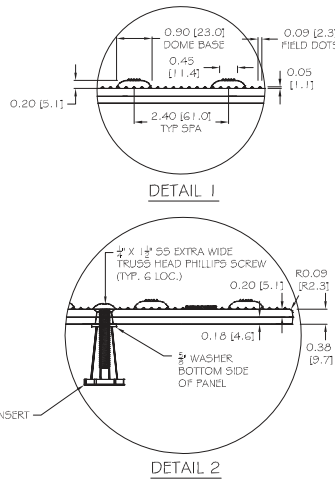
Tactile Units are to be used on new curb ramp locations. The Tactile Units can be pressed into place in the freshly poured concrete.

INCIDENTALS

¼" x 1½" SS extra-wide truss head Phillips screws.

WARRANTY

Cast Iron Tactile Unit shall be guaranteed in writing for a period of fifteen (15) years from date of contract's final completion. The guarantee includes breakage and deformation of the Tactile Warning Surface material.



PHYSICAL CHARACTERISTICS

705 Detectable Warnings. ADAAG specifies:

- 705.1.3 Contrast. Detectable Warning Surfaces shall contrast visually with adjacent walking surfaces either light-on-dark, or dark-on-light.
- Slip Resistance:

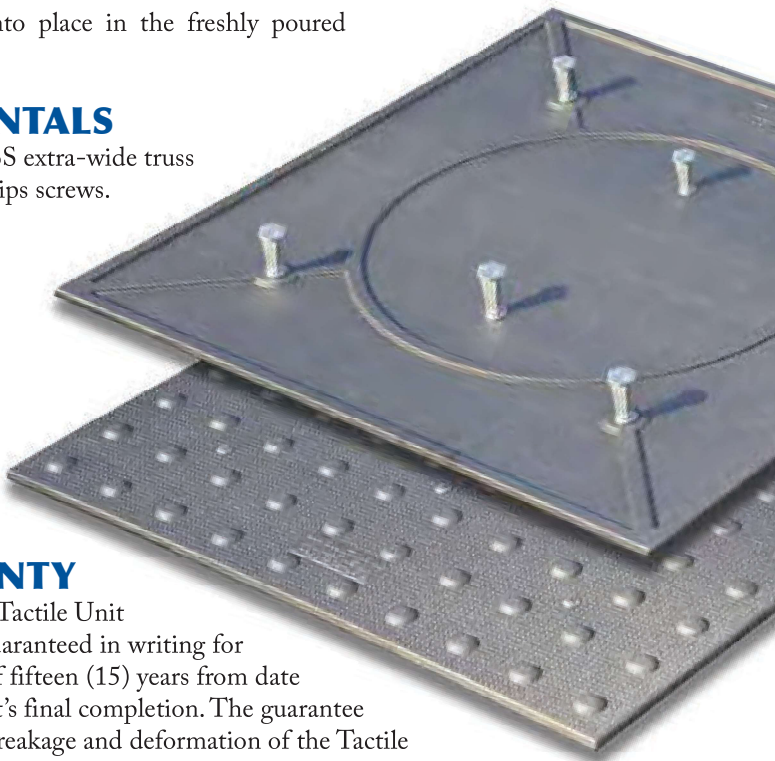
0.93 Dry	.091 Wet	ASTM C1028.
----------	----------	-------------

ADA Compliant

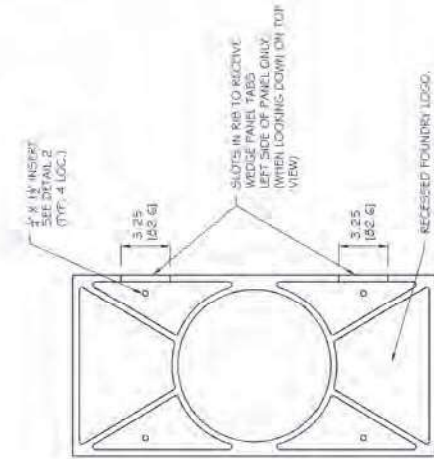
- Natural finish meets color contrast requirements.
- Slip-resistant textured surface
- Complies with ASTM A159 Requirements for Automotive Grade Gray Iron Castings
- Complies with AASHTO M105-09, Standard Specification for Gray Iron Castings (ASTM A48, Class 45B)
- Complies with AASHTO M306-10 for Drainage, Sewer, Utility, and Related Castings
- DOT Approved (contact your local sales representative for specification approvals)

Made in the U.S.A. from Recycled Materials

- Eligible to earn LEED® points in the Materials and Resources Category
- Meets ARRA (American Recovery and Reinvestment Act) domestic requirements
- Cast iron is an environmentally responsible product that is completely recyclable after its useful life.



12"x24" (305 x 610mm) Tile 2.40" (60.96 mm) Dome Spacing



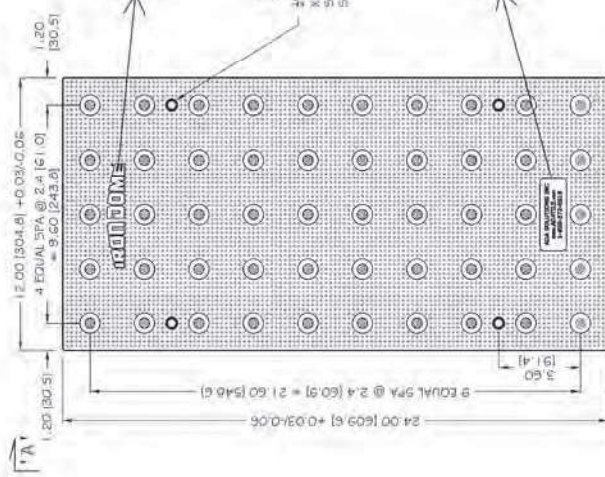
CAST IRON 1 2X24 TILE BOTTOM VIEW



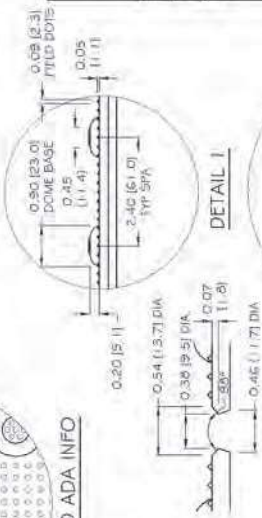
RAISED IRON DOME LOGO



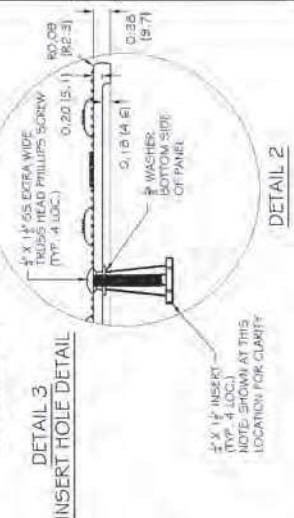
RAISED ADA INFO



CAST IRON 1 2X24 TILE TOP VIEW



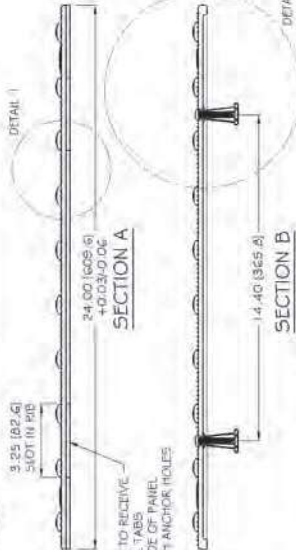
DETAIL 1



DETAIL 2



DETAIL 3



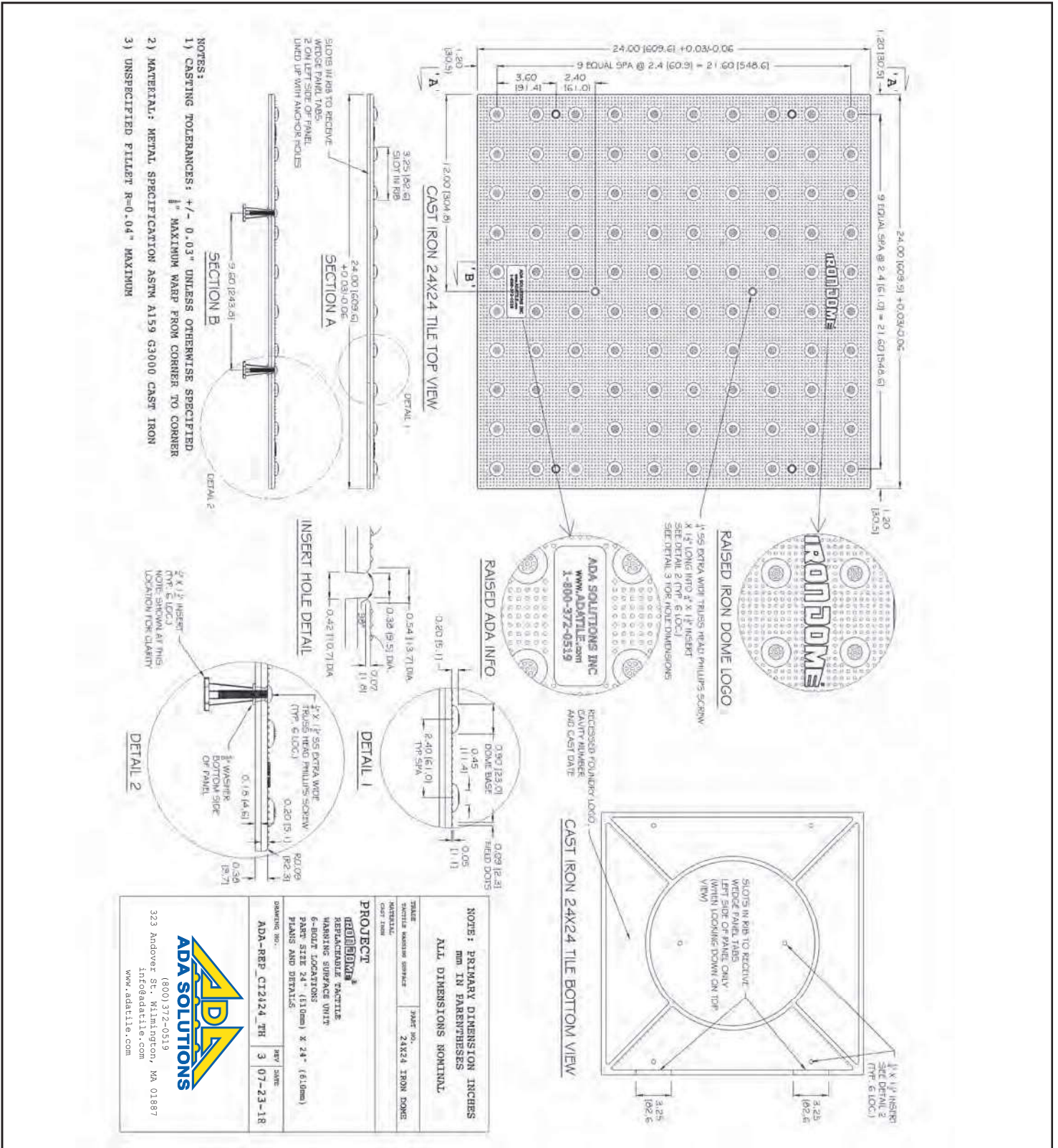
SECTION A

SECTION B

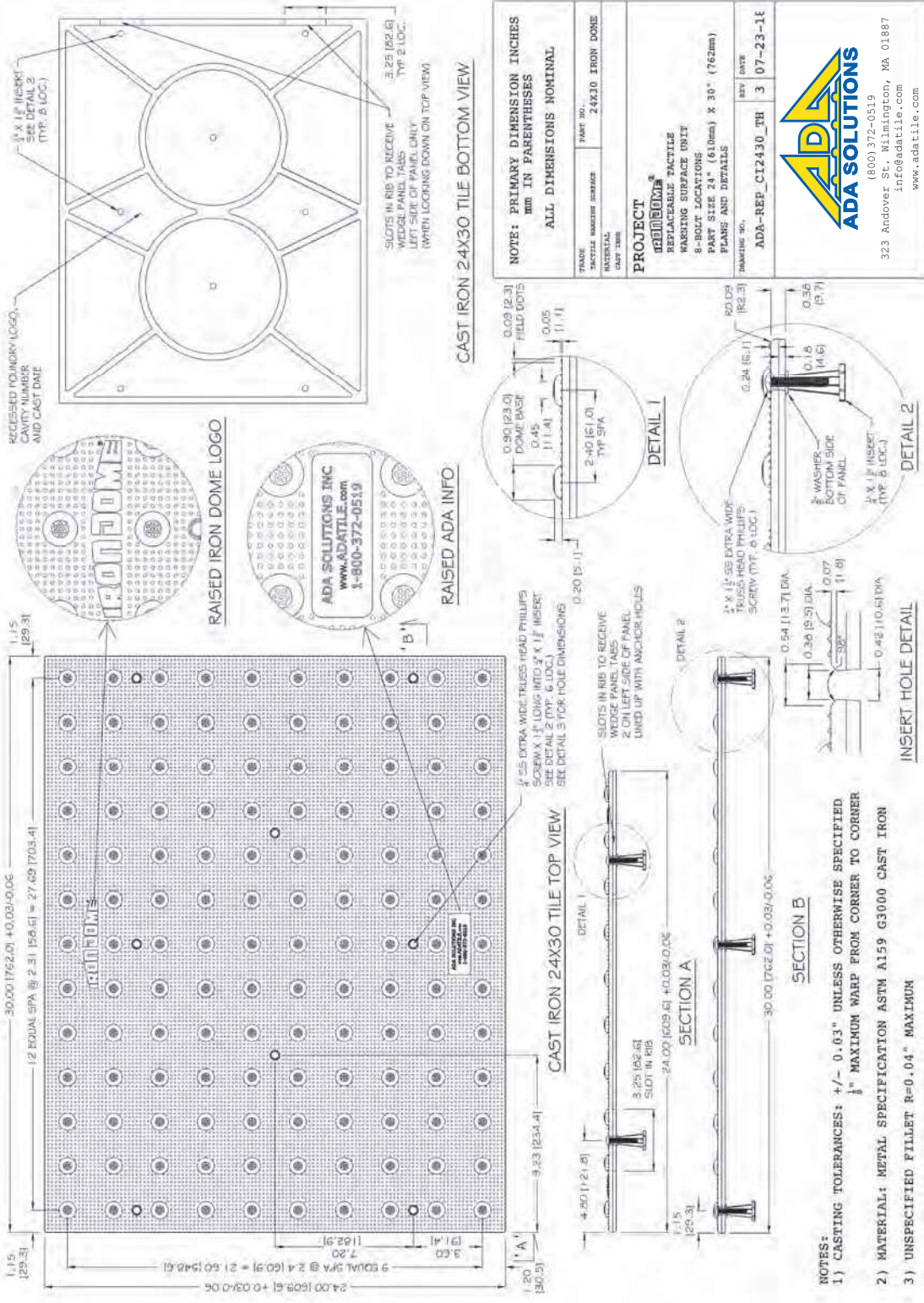
- NOTES:
- 1) CASTING TOLERANCES: +/- 0.03" UNLESS OTHERWISE SPECIFIED
 - 2) MATERIAL: METAL SPECIFICATION ASTM A159 G3000 CAST IRON
 - 3) UNSPECIFIED FILLET R=0.04" MAXIMUM

GRADE	CAST IRON	PART NO.	12X24-TRON-DOME
FINISH	AS CAST	REV.	05-20-13
PROJECT	IRON DOME REPLACEMENT TACTILE WARNING SURFACE UNIT 4-BODY LOCATIONS PANEL SIZE 12" (305mm) X 24" (610mm) PANELS AND DETAILS		
DATE	05-20-13	BY	AD
DESCRIPTION	ADA-REP_CII224_TH 2 05-20-13		
(800) 372-0519 info@adatile.com www.adatitle.com			
323 Andover St., Wilmington, MA 01887			

24"x24" (610 x 610mm) Tile 2.40" (60.96 mm) Dome Spacing



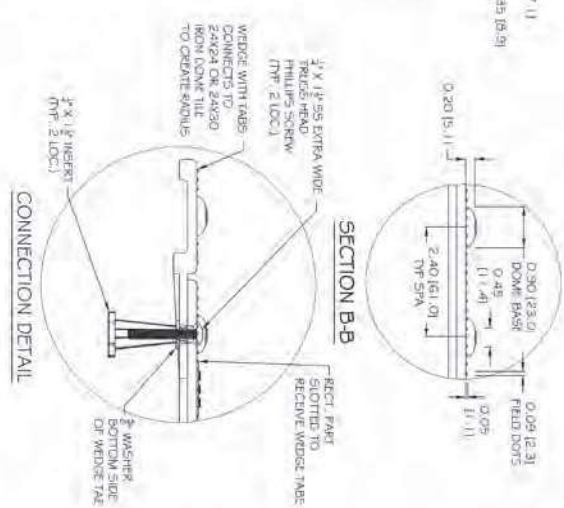
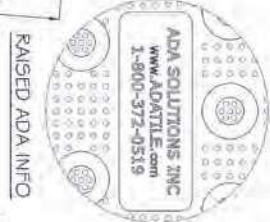
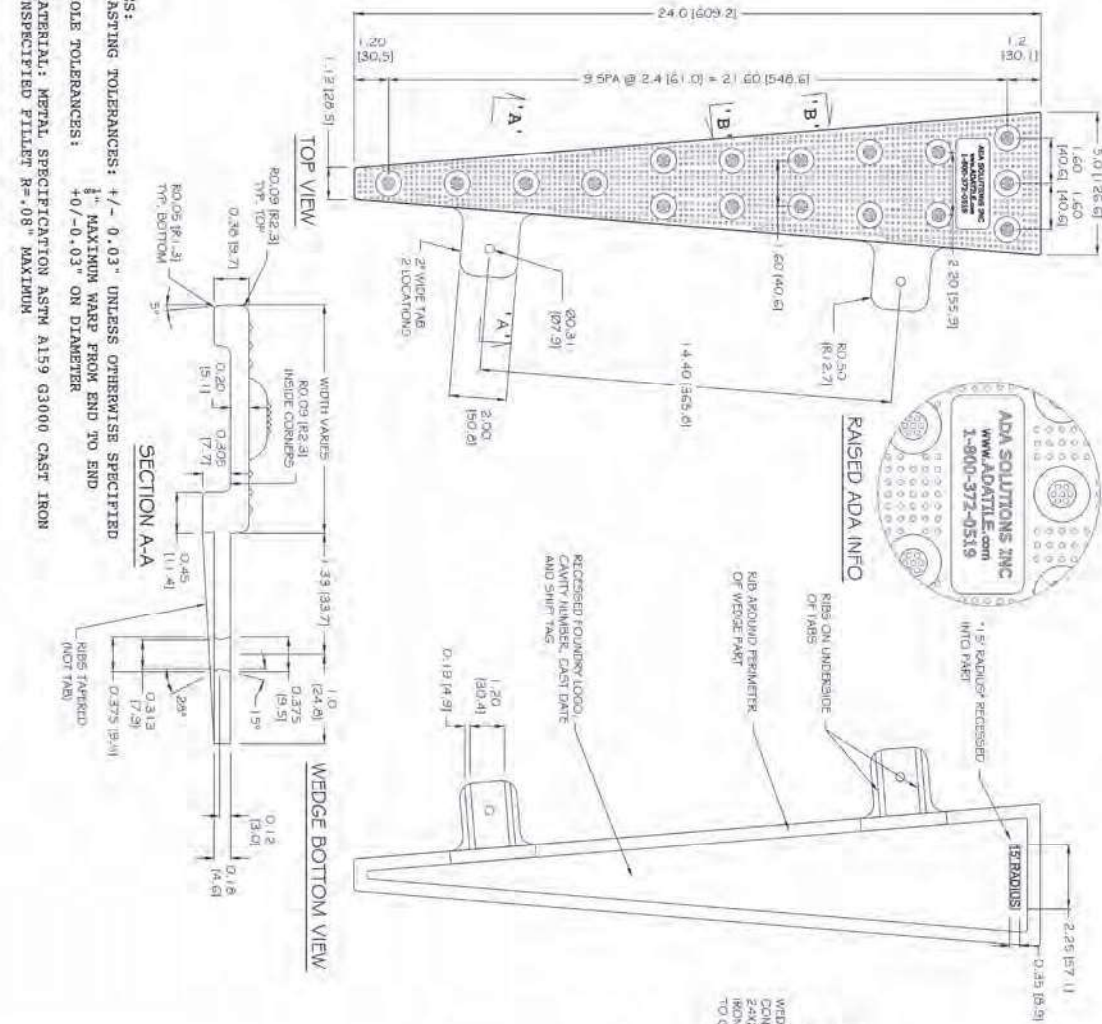
24"x30" (610 x 762mm) Tile 2.40" (60.96 mm) Dome Spacing



15' Wedge Tile

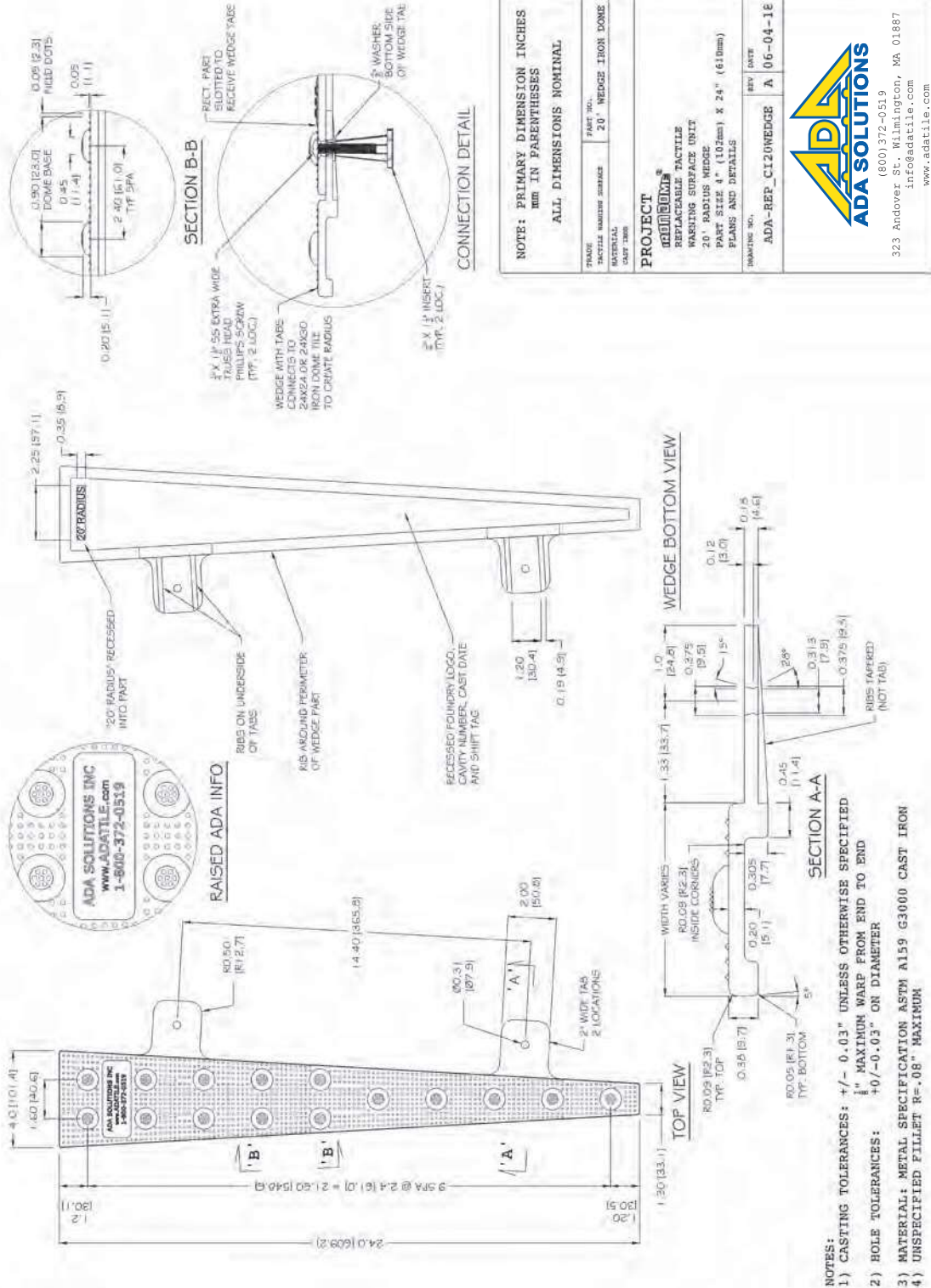
2.40" (60.96 mm) Dome Spacing

- NOTES:**
- 1) CASTING TOLERANCES: +/- 0.03" UNLESS OTHERWISE SPECIFIED
 - 2) HOLE TOLERANCES: +/- 0.03" MAXIMUM WARP FROM END TO END
 - 3) MATERIAL: METAL SPECIFICATION ASTM A159 G3000 CAST IRON
 - 4) UNSPECIFIED FILLET R=108" MAXIMUM



NOTE: PRIMARY DIMENSION INCHES	
ALL DIMENSIONS NOMINAL.	
PROJECT	IRON DOME®
REPLACEMENT TACTILE	
WARNING SURFACE UNIT	
15' RADIUS WEDGE	
PART SIZE 5" (127mm) X 24" (610mm)	
PLANS AND DETAILS	
DRAWING NO.	REV. DATE
ADA-REP-0115WEDGE	A 06-19-16
TABLE	TABLE NO.
TACTILE WARNING SURFACE	15' WEDGE IRON DOME
MATERIAL:	CAST IRON
ADA SOLUTIONS	
(800) 372-0519	
323 Andover St., Wilmington, MA 01887	
Info@adatile.com	
www.adatile.com	

20' Wedge Tile 2.40" (60.96 mm) Dome Spacing

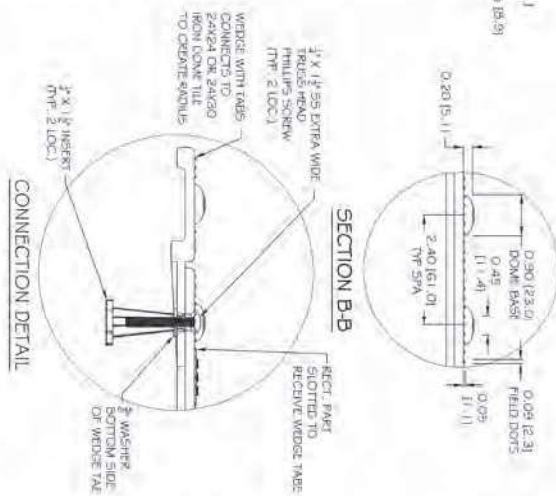
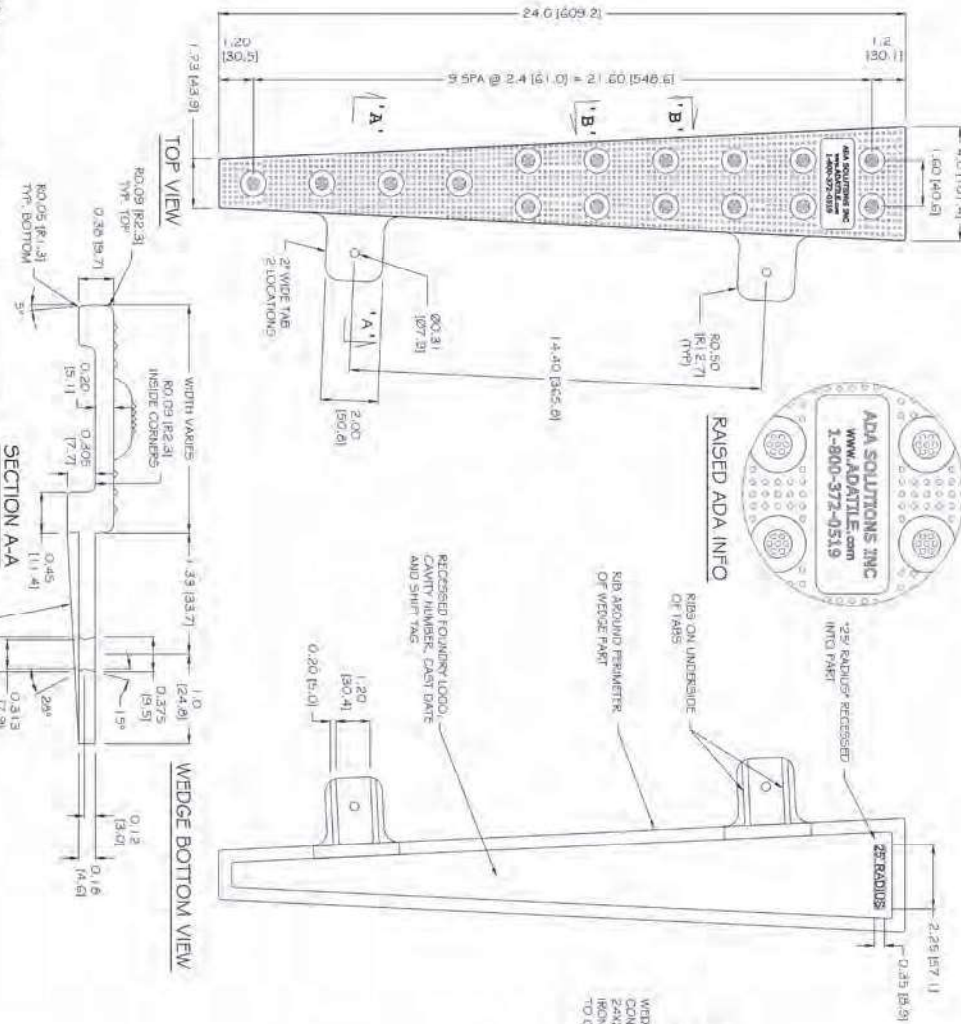


(800) 372-0519
323 Andover St., Wilmington, MA 01887
info@adatile.com
www.adatile.com

25' Wedge Tile

2.40" (60.96 mm) Dome Spacing

- NOTES:**
- 1) CASTING TOLERANCES: ± 0.03 " UNLESS OTHERWISE SPECIFIED
 - 2) HOLE TOLERANCES: ± 0.03 " MAXIMUM WARP FROM END TO END
 - 3) MATERIAL: METAL SPECIFICATION ASTM A159 G3000 CAST IRON
 - 4) UNSPECIFIED FILLET R=0.08" MAXIMUM



NOTE: PRIMARY DIMENSION INCHES mm IN PARENTHESES	
ALL DIMENSIONS NOMINAL.	
PROJECT	REPLACEMENT
REPLACEMENT TACTILE	REPLACEMENT TACTILE
WARNING SURFACE UNIT	WARNING SURFACE UNIT
25° RADIUS WEDGE	25° RADIUS WEDGE
PART SIZE 4" (112mm) X 24" (610mm)	PART SIZE 4" (112mm) X 24" (610mm)
PLANS AND DETAILS	PLANS AND DETAILS
DRAWING NO.	REV. DATE
ADA-REP_C125WEDGE	1 07-30-1E
323 Andover St., Wilmington, MA 01887	(800) 372-0519
www.adatitle.com	Info@adatitle.com

30' Wedge Tile 2.40" (60.96 mm) Dome Spacing

