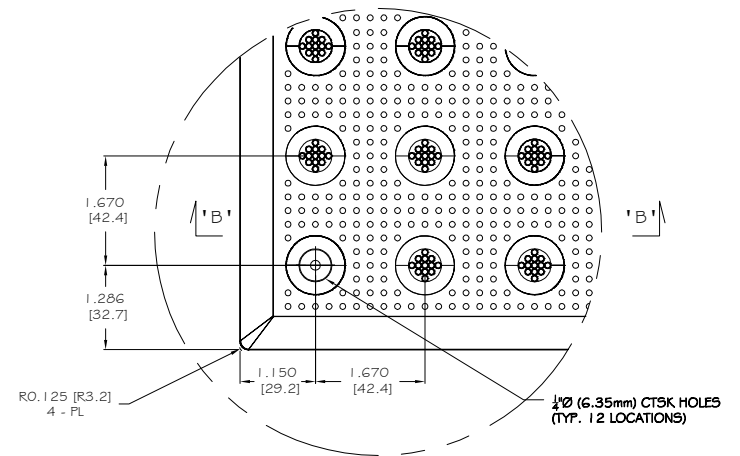
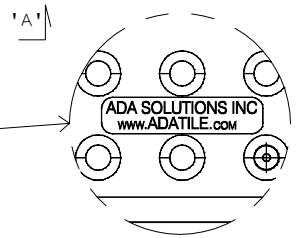


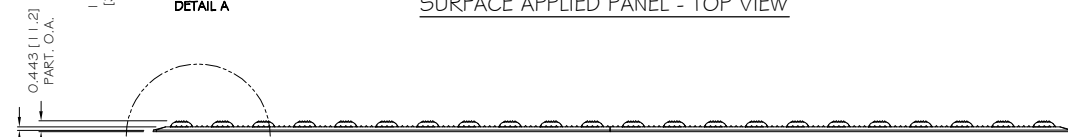
SURFACE APPLIED PANEL - TOP VIEW



DETAIL A



NOTE: PRIMARY DIMENSION INCHES
mm IN PARENTHESSES

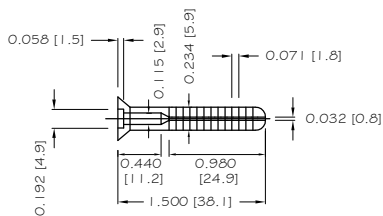


SECTION A-A

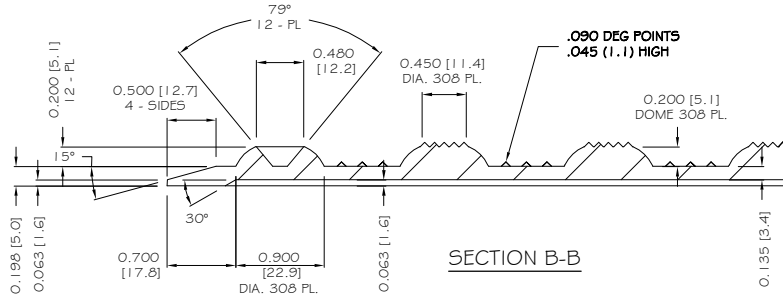


DETAIL B

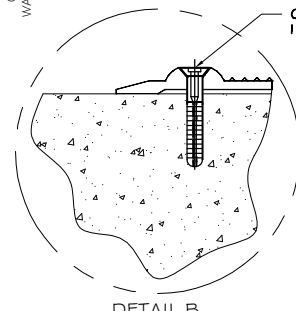
COMPOSITE SLEEVE ANCHOR
12 TOTAL PER PANEL



**COMPOSITE SLEEVE ANCHOR
WITH STAINLESS STEEL NAIL**
1/4" X 1 1/2" (6.35mm X 38.1mm)



SECTION B-B



**DETAIL B
PANEL INSTALLATION**

ALL DIMENSIONS NOMINAL PRIMARY DIMENSION INCHES mm IN PARENTHESSES	
TRADE TACTILE WARNING SURFACE	PART NO. 2436IDRET1_
MATERIAL SMC COMPOSITE	
PROJECT SURFACE APPLIED TACTILE WARNING SURFACE PANEL 12-ANCHOR LOCATIONS 1.670" (42.4MM) IN LINE TRUNCATED DOME PART SIZE: 24" x 36" (610MM X 914MM) PLANS AND DETAILS	
DRAWING NO. ADA-SA2436_1	DATE 06-16-17
 ADA SOLUTIONS, INC. DETECTABLE WARNING SURFACES FOR PEDESTRIAN CROSSINGS WWW.ADATILE.COM PHONE: (800)372-0519 EMAIL: INFO@ADATILE.COM	