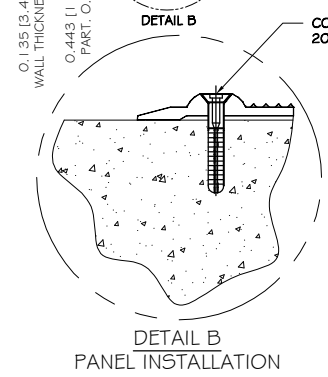


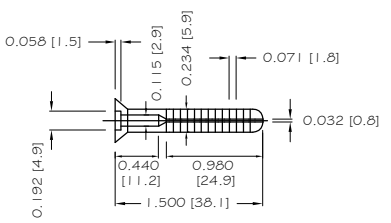
**SURFACE APPLIED PANEL - TOP VIEW**



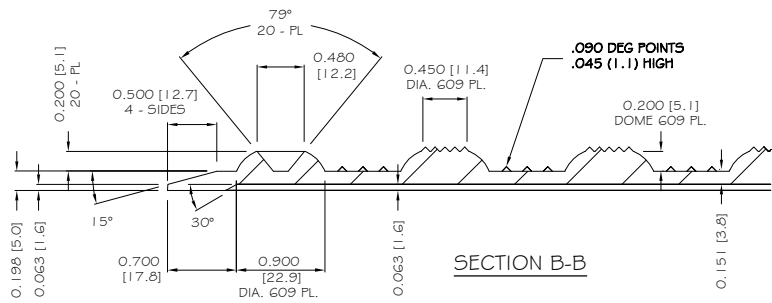
**SECTION A-A**



**COMPOSITE SLEEVE ANCHOR  
20 TOTAL PER PANEL**



**COMPOSITE SLEEVE ANCHOR  
WITH STAINLESS STEEL NAIL  
1/4" X 1 1/2" (6.35mm X 38.1mm)**



**SECTION B-B**

ALL DIMENSIONS NOMINAL PRIMARY DIMENSION INCHES mm IN PARENTHESES	
TRADE TACTILE WARNING SURFACE	PART NO. 3648IDRET1_
MATERIAL SMC COMPOSITE	
<b>PROJECT</b> SURFACE APPLIED TACTILE WARNING SURFACE PANEL 20-ANCHOR LOCATIONS 1.670" (42.4MM) IN LINE TRUNCATED DOME PART SIZE: 36" x 48" (914MM X 1219MM) PLANS AND DETAILS	
DRAWING NO. ADA-SA3648_1	DATE 06-16-17
 <b>ADA SOLUTIONS, INC.</b> DETECTABLE WARNING SURFACES FOR PEDESTRIAN CROSSINGS  WWW.ADATILE.COM PHONE: (800)372-0519 EMAIL: INFO@ADATILE.COM	