

5-Year  
Warranty

Proudly Made in  
the U.S.A.



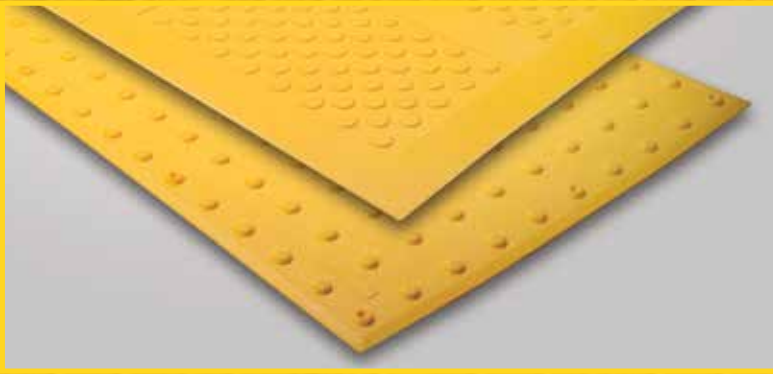
**ADA SOLUTIONS, INC.**  
**DETECTABLE WARNING SURFACES**  
**FOR PEDESTRIAN CROSSINGS**

## **SURFACE MOUNT TACTILE**



*Service, Delivery and Price*  
*Make ADA Solutions, Inc. the Obvious Choice*

WWW.ADATILE.COM • 800-372-0519



# **SURFACE MOUNT TACTILE**

**Proudly Made in  
the U.S.A.**



In stock colors

**White**  
37875



**Brick Red**  
20109



**Yellow**  
33538



**Blue**  
15187



**Safety Red**  
31350



**Seattle Yellow**  
23594



**Black**  
37038



**Dark Gray**  
36081



**Clay Red**  
22144



ONS INC  
.COM

# SURFACE MOUNT COMPOSITE TACTILE

## Installation Procedure

**Be sure to read and understand all of these instructions before you begin.**

- A.** The installation area should be cleaned of all debris, oil and grease, making sure the area is completely free of moisture. Tactile Panel may be surface mounted on existing pre-cleaned substrate.
- B.** Lay out the Tactile Panel on the substrate as it will appear when installed.
- If required, the Tactile Panel may be cut using a table saw and carbide tipped blade. See web site for more details.
- C.** Place a 3/8" bead of adhesive on the frame of the bottom of each Tactile Panel. Adhesive yield: 10SF per 10 ounce cartridge.
- D.** Set the Tactile Panel in the installation area. Make all necessary adjustments prior to fastening.
- E.** Fasteners shall be installed in pre-formed fastener locations. Holes shall be drilled using a hammer drill with 1/4" x 2" min SDS bits. The drilled holes must be a minimum of 2" deep. Place fasteners in hole and hammer into place.
- If additional fasteners are required, use a 1/2", six point, 82 degree countersink to add a new fastener location. Follow the same drilling method for installing the fastener.
- F.** Caulk around perimeter of entire installation using BASF NP1 or equivalent.
- All concrete dust present on the Tactile Panel resulting from the drilling process must be cleaned off of the Tactile Panel prior to using any caulking materials.



\*Not recommended or warranted for asphalt installation.

*View additional photos, drawings and specifications  
on our website: [www.adatale.com](http://www.adatale.com).  
Call (800) 372-0519 with any questions.*

**PRODUCT SIZES**  
2'x3' 2'x4' 2'x5'  
3'x4' 3'x5'

**APPLICATION**  
Existing  
Concrete Ramps

# SURFACE MOUNT COMPOSITE TACTILE

## Inline Dome Pattern

### DOMES GEOMETRY

In accordance with ADA Regulations for Detectable Warning on Curb Ramps: Raised truncated domes with a diameter of nominal 0.9", a height of nominal 0.2", and a center-to-center spacing of nominal 1.67" minimum and 2.35" maximum.

### PANEL DIMENSIONS

Tactile Panels are available in 24"x36", 24"x48", 24"x60", 36"x48" and 36"x60" sizes and measure 3/16" thick. Panels can be custom cut to fit field conditions. All four edges of each panel have a 1/2" beveled edge. Each panel has 12 to 24 pre-formed fastener locations based upon panel size.



### MATERIAL

A durable exterior grade homogenous glass, carbon, and fiberglass reinforced composite material which is colorfast and UV stable. The color of the Tactile Unit is uniform throughout and does not rely on any type of paint coating to achieve color stability. Standard colors include: Federal Yellow, Seattle Yellow, White, Brick Red, Clay Red, Safety Red, Blue, Dark Gray and Black. For superior wheelchair, walker and shopping cart mobility, truncated domes have a center-to-center (horizontally and vertically) spacing of 2.35 inches.

### PHYSICAL CHARACTERISTICS

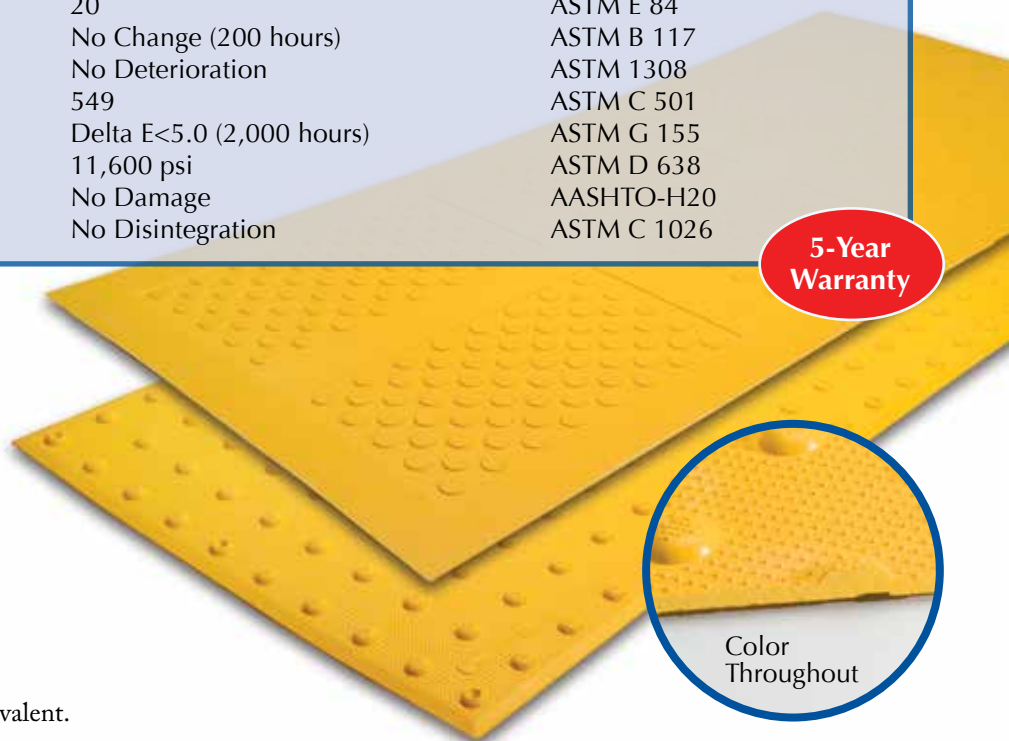
Compressive Strength	28,900 psi	ASTM D 695
Flexural Strength	29,300 psi	ASTM D 790
Water Absorption	.07%	ASTM D 570
Slip Resistance	1.18 Dry, 1.05 Wet	ASTM C 1028
Flame Spread Index	20	ASTM E 84
Salt Spray	No Change (200 hours)	ASTM B 117
Chemical Stain Testing	No Deterioration	ASTM 1308
Abrasion Resistance	549	ASTM C 501
Accelerated Weathering	Delta E<5.0 (2,000 hours)	ASTM G 155
Tensile Strength	11,600 psi	ASTM D 638
Load Bearing at 16,000 lbs.	No Damage	AASHTO-H20
Freeze/Thaw/Heat	No Disintegration	ASTM C 1026

### INSTALLATION

ADA Surface Applied TWS Panel (Existing Concrete): TWS panel can be easily installed (adhered, fastened & sealed) in a matter of minutes.

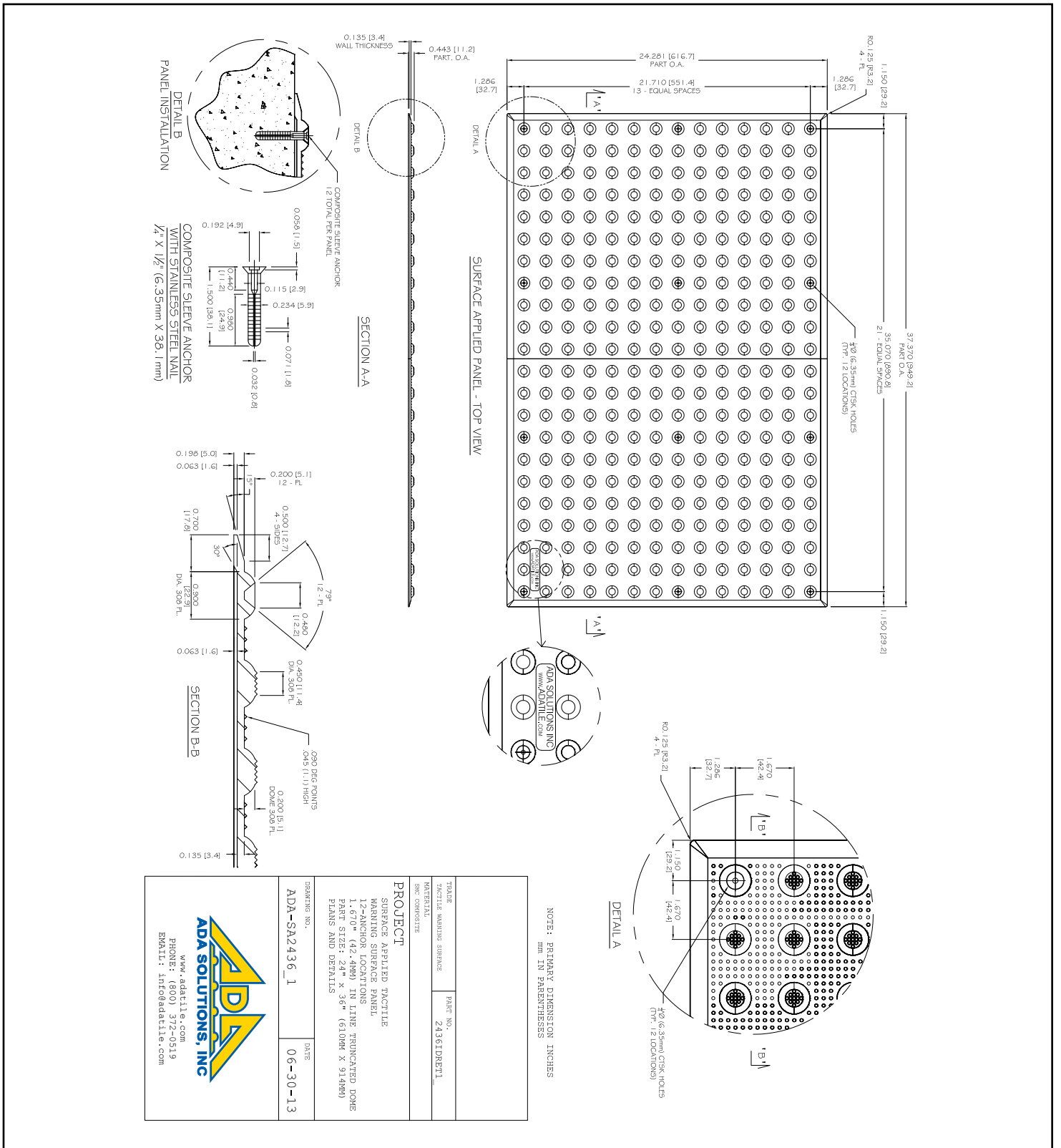
### INCIDENTALS

- Fasteners:** 1/4" x 1 5/8", composite sleeve anchor with stainless steel pins.
- Adhesive:** One component structural elastomeric adhesive.
- Sealant:** BASF NP1, Sikaflex 1A, or equivalent.



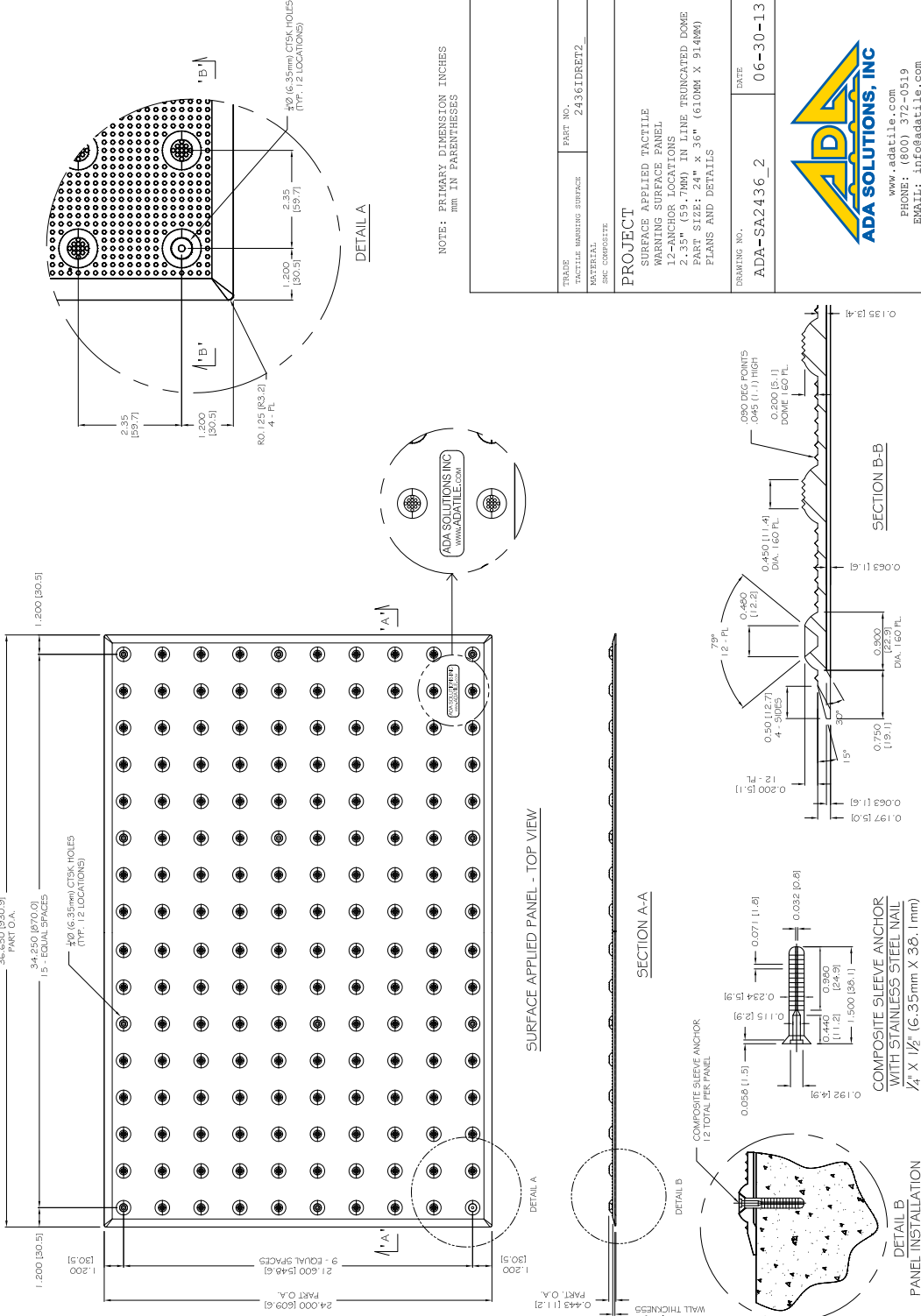
# SURFACE MOUNT COMPOSITE TACTILE

24" x 36" (610 x 914mm) Tile  
1.67" (42.4 mm) Dome Spacing



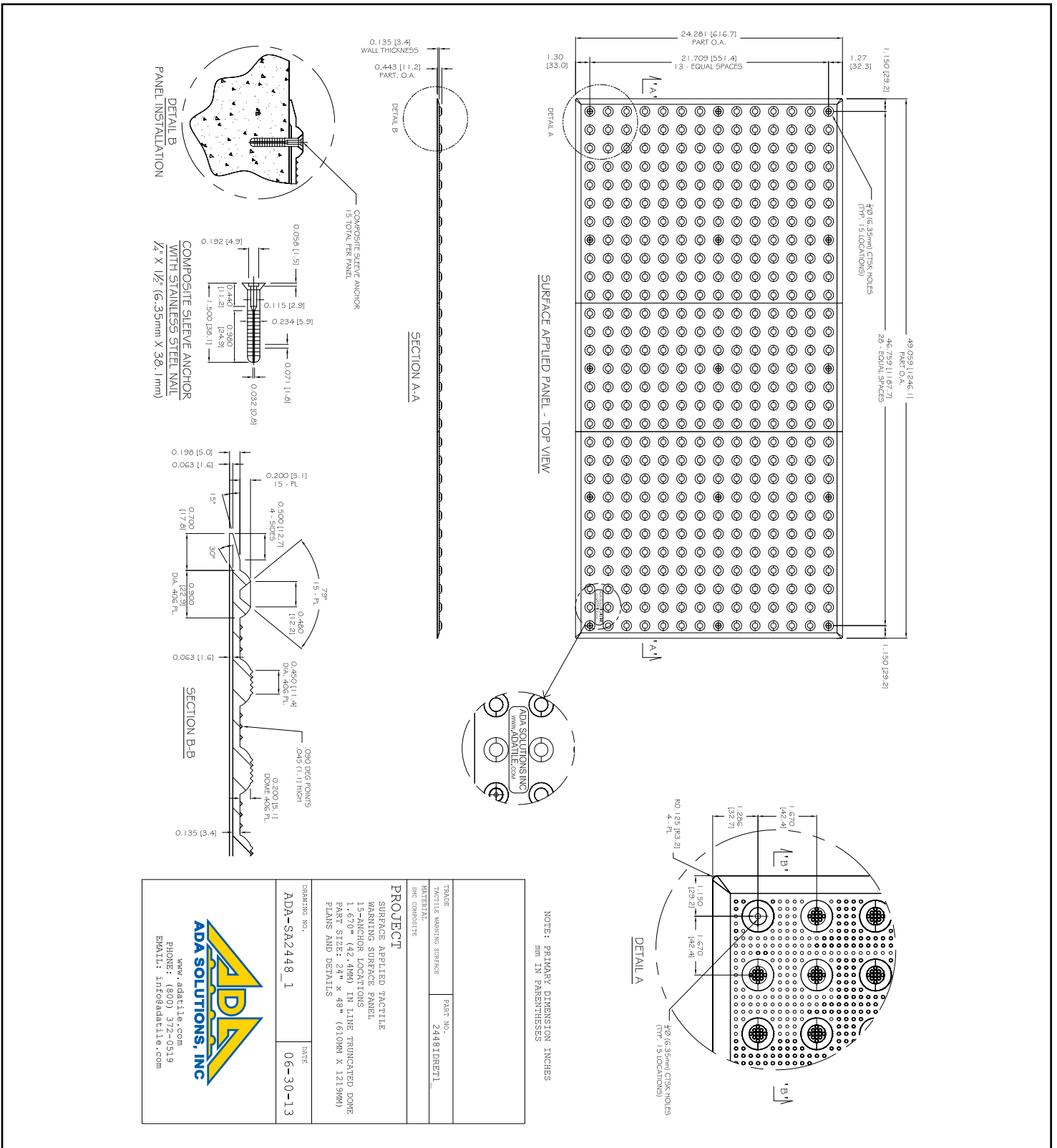
# SURFACE MOUNT COMPOSITE TACTILE

24" x 36" (610 x 914mm) Tile  
2.35" (59.7 mm) Dome Spacing



# SURFACE MOUNT COMPOSITE TACTILE

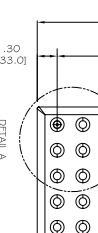
**24" x 48" (610 x 1219mm) Tile**  
**1.67" (42.4 mm) Dome Spacing**



TRADE TACTILE WARNING SURFACE MATERIAL ENC. COMPOSITE	PART NO. 24481DBEPL
--	------------------------

PROJECT SURFACE APPLIED TACTILE WARNING SURFACE PANEL 15-ANCHOR LOCATIONS 1.670" (42.4mm) IN LINE TRUNCATED DOME PART SIZE: 24" x 48" (610mm x 1219mm) PLANS AND DETAILS
--

DRAWING NO. ADA-SA2448_1	DATE 06-30-13
-----------------------------	------------------

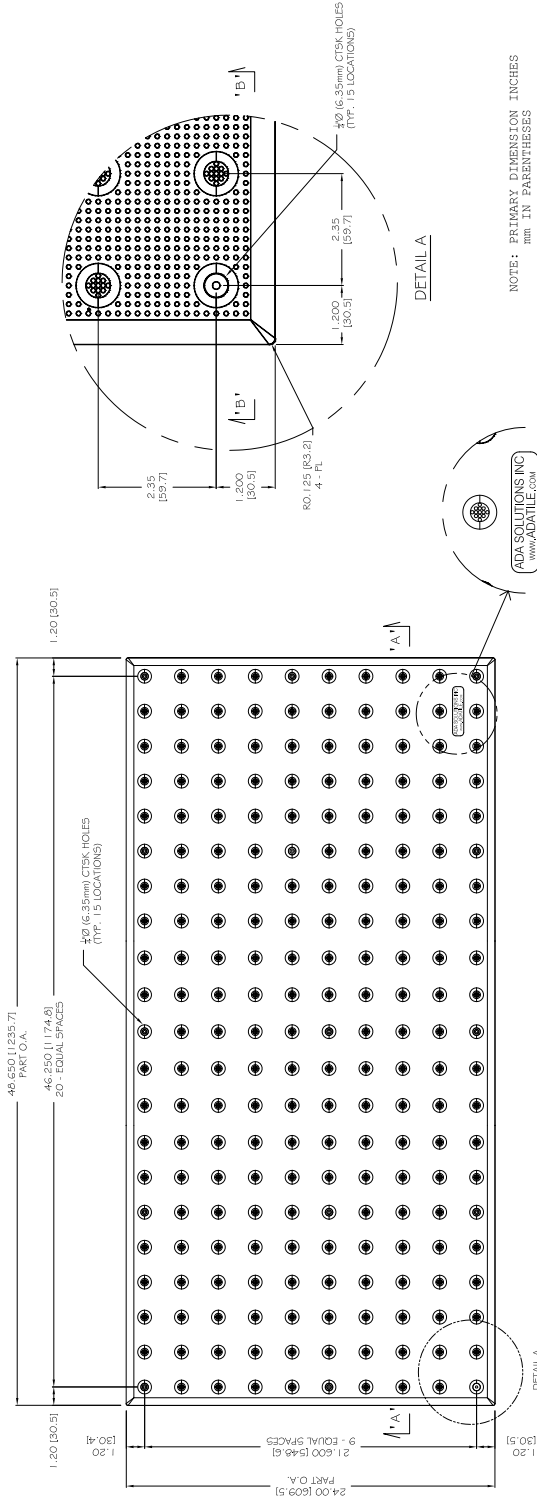


www.adatiles.com  
 PHONES: (800) 372-0519  
 EMAIL: info@adatile.com



# SURFACE MOUNT COMPOSITE TACTILE

24" x 48" (610 x 1219mm) Tile  
2.35" (59.7 mm) Dome Spacing



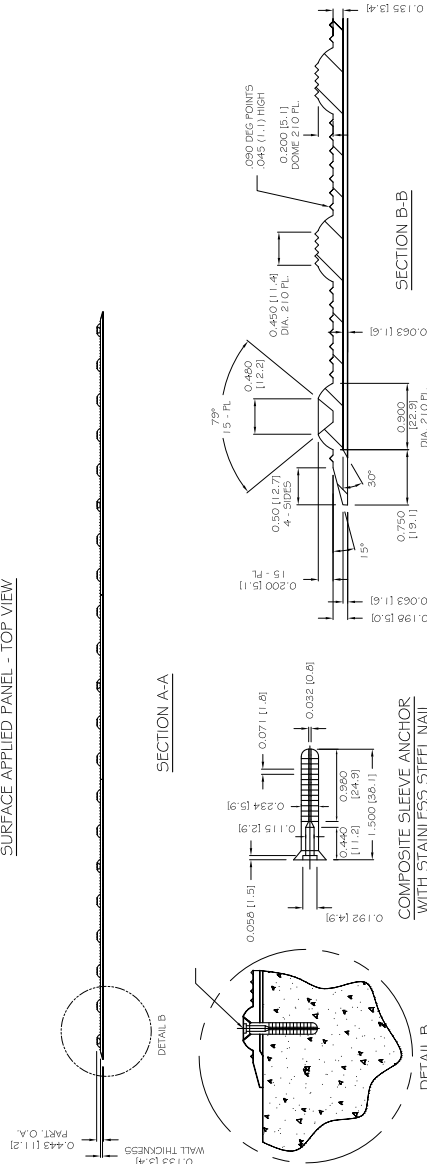
DETAIL A

NOTE: PRIMARY DIMENSION INCHES  
mm IN PARENTHESES

TRADE	TACTILE WARNING SURFACE	PART NO.	2448TDRET2
MATERIAL	SBC COMPOSITE		
PROJECT	SURFACE APPLIED TACTILE WARNING SURFACE PANEL 15-ANCHOR LOCATIONS 2.35" (59.7mm) IN LINE TRUNCATED DOME PART SIZE: 24" x 48" (610MM X 1219MM) FLANS AND DETAILS		
DRAWING NO.	ADA-SAZ448_2	DATE	06-30-13



SURFACE APPLIED PANEL - TOP VIEW



SECTION A-A

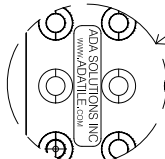
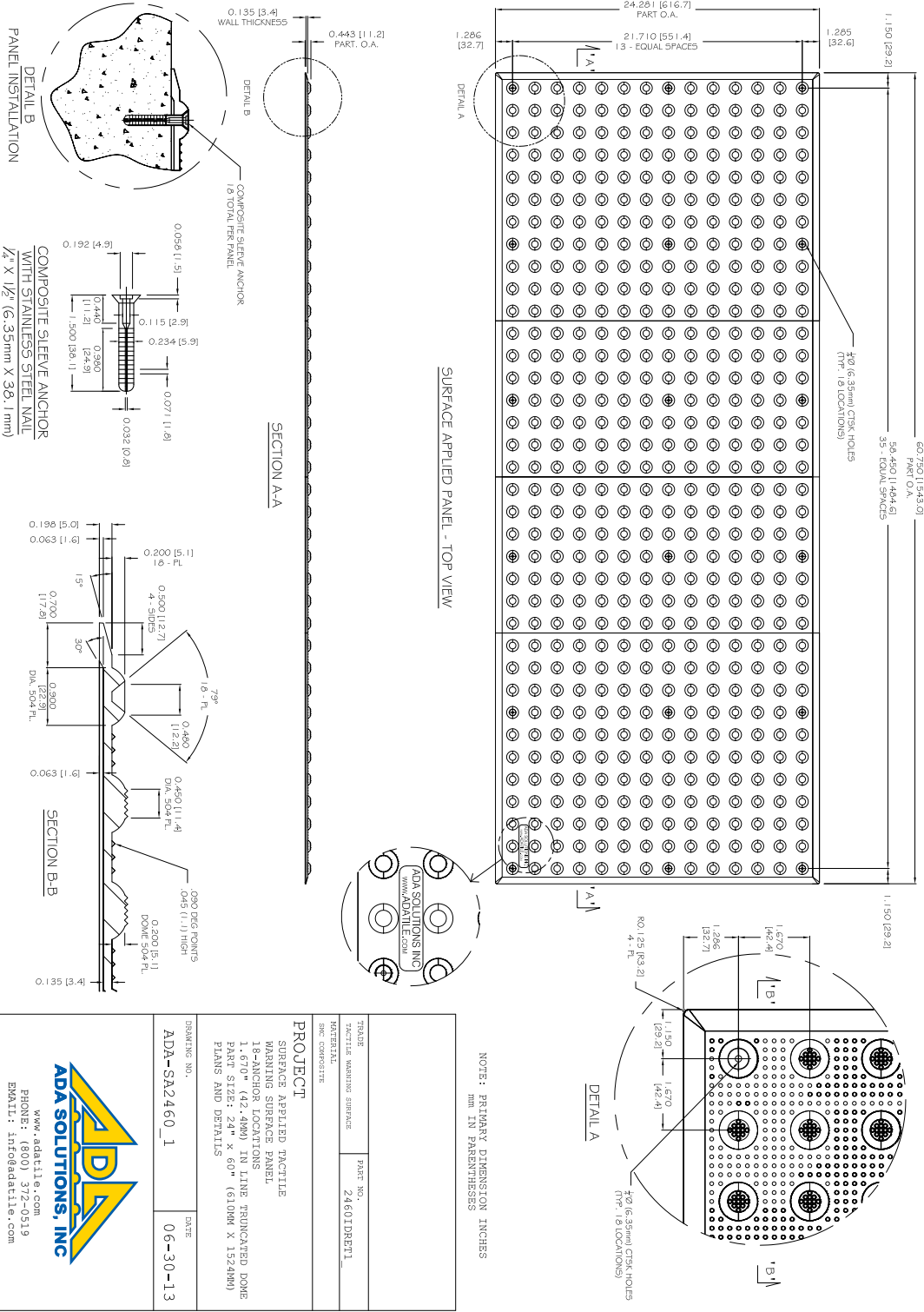
SECTION B-B

COMPOSITE SLEEVE ANCHOR WITH STAINLESS-STEEL NAIL  
7/8" X 1/2" (19.1mm X 38.1mm)

PANEL INSTALLATION  
DETAIL B

# SURFACE MOUNT COMPOSITE TACTILE

**24" x 60" (610 x 1524mm) Tile**  
**1.67" (42.4 mm) Dome Spacing**



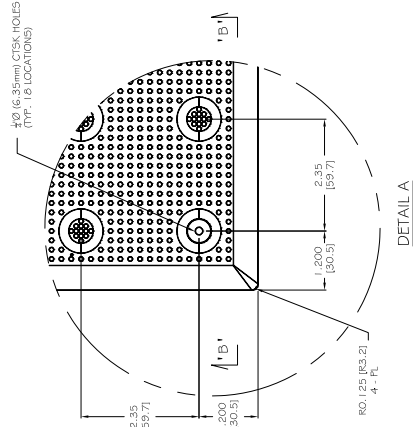
NOTE: PRIMARY DIMENSION INCHES  
 MIN. IN PARENTHESES

TRADE TACTILE WARNING SURFACE	PART NO. 2460IDRET1
MATERIAL SEC. COMPOSITE	
<b>PROJECT</b> SURFACE APPLIED TACTILE WARNING SURFACE PANEL 18-ANCHOR LOCATIONS 1.670" (42.4MM) IN LINE TRUNCATED DOME PART SIZE: 24" x 60" (610MM X 1524MM) PLANS AND DETAILS	
DRAWING NO. ADA-SA2460_1	DATE 06-30-13



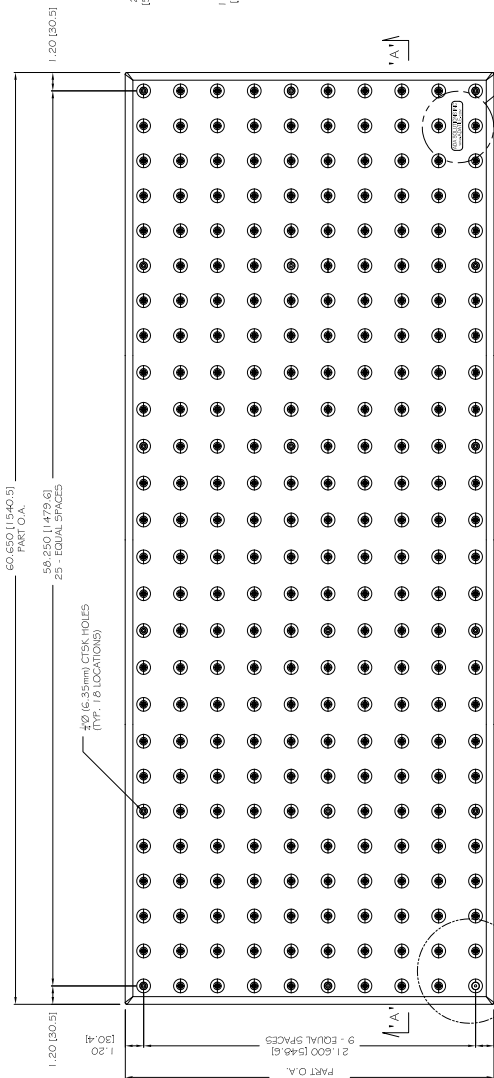
# SURFACE MOUNT COMPOSITE TACTILE

24" x 60" (610 x 1524mm) Tile  
2.35" (59.7 mm) Dome Spacing



DETAIL A

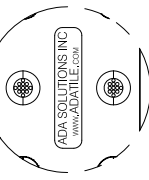
NOTE: PRIMARY DIMENSION IN INCHES  
mm IN PARENTHESES



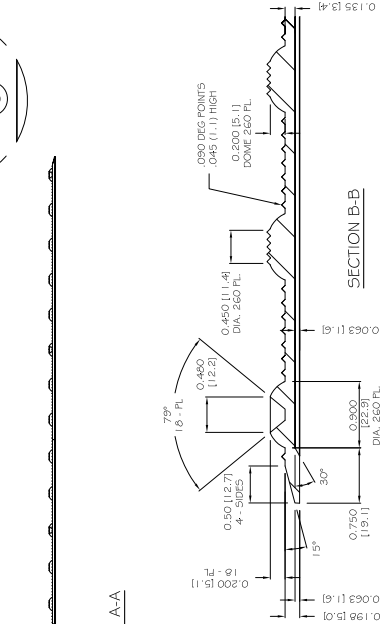
SURFACE APPLIED PANEL - TOP VIEW

DETAIL A

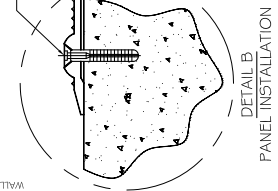
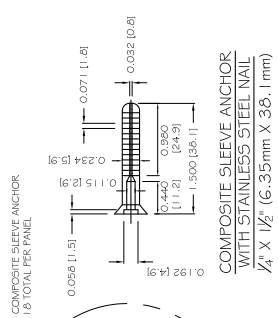
DETAIL B



TRAP TACTILE WARNING SURFACE	PART NO. 2460DRET2
MATERIAL SMC COMPOSITE	
PROJECT SURFACE APPLIED TACTILE WARNING SURFACE PANEL 18-ANCHOR LOCATIONS 2.35" (59.7MM) IN LINE TRUNCATED DOME PART SIZE: 24" x 60" (610MM X 1524MM) PLANS AND DETAILS	
DRAWING NO. ADA-SA2460_2	DATE 06-30-13
 www.adatitle.com PHONE: (800) 372-0519 EMAIL: info@adatitle.com	



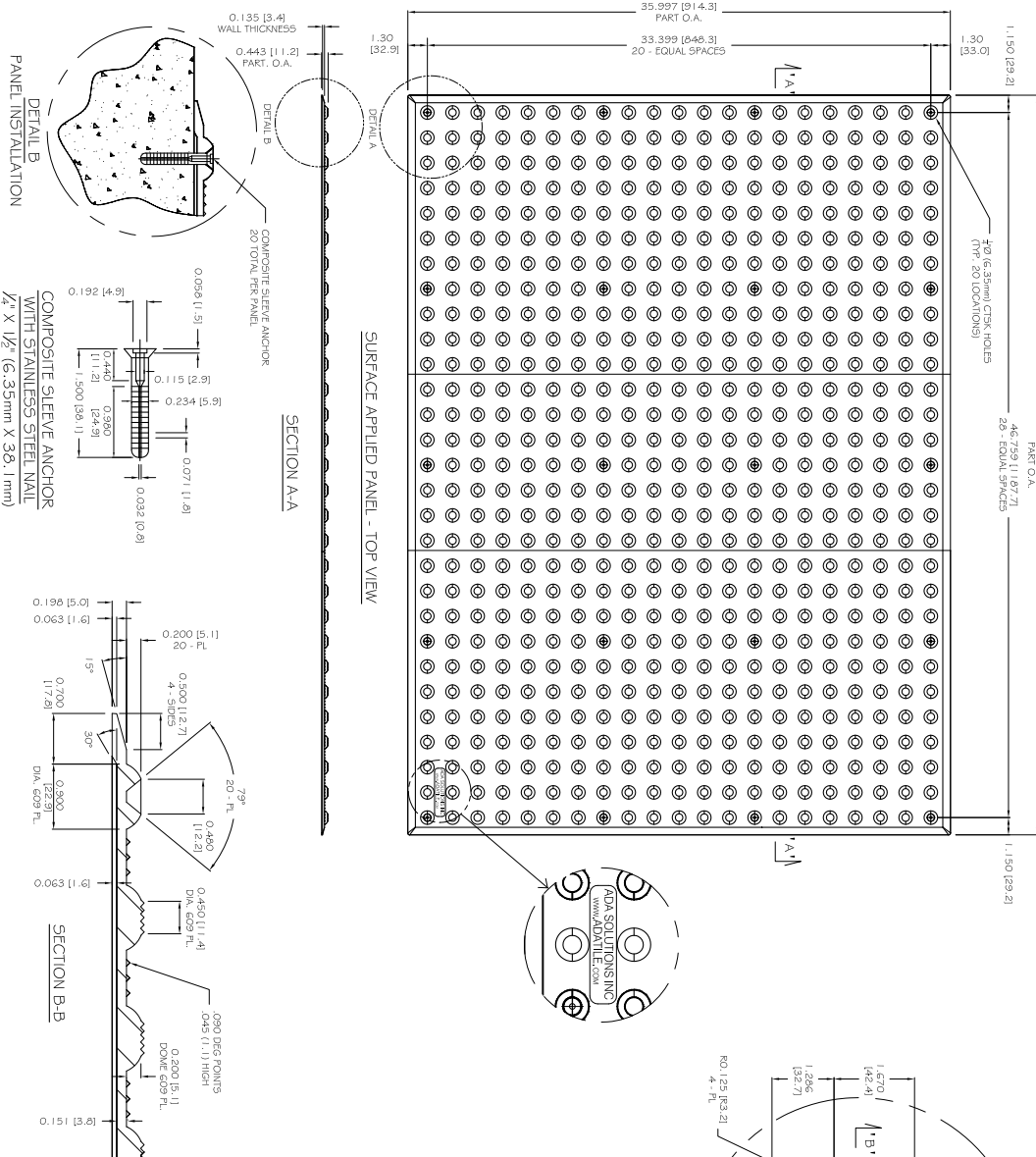
SECTION A-A



DETAIL B  
PANEL INSTALLATION

# SURFACE MOUNT COMPOSITE TACTILE

36" x 48" (914 x 1219mm) Tile  
1.67" (42.4 mm) Dome Spacing



TRADE TACTILE WARNING SURFACE	PART NO. 36481DBE7L
MATERIAL SMC COMPOSITE	
<b>PROJECT</b> SURFACE APPLIED TACTILE WARNING SURFACE PANEL 20-ANCHOR LOCATIONS 1.670" (42.4mm) IN LINE TRUNCATED DOME PART SIZE: 36" x 48" (914mm X 1219mm) PLANS AND DETAILS	
DRAWING NO. ADA-SA3648_1	DATE 06-30-13



# SURFACE MOUNT COMPOSITE TACTILE

36" x 48" (914 x 1219mm) Tile  
2.35" (59.7 mm) Dome Spacing

**DETAIL A**


NOTE: PRIMARY DIMENSION INCHES  
mm IN PARENTHESES

**DETAIL B**

**SECTION A-A**

**SECTION B-B**

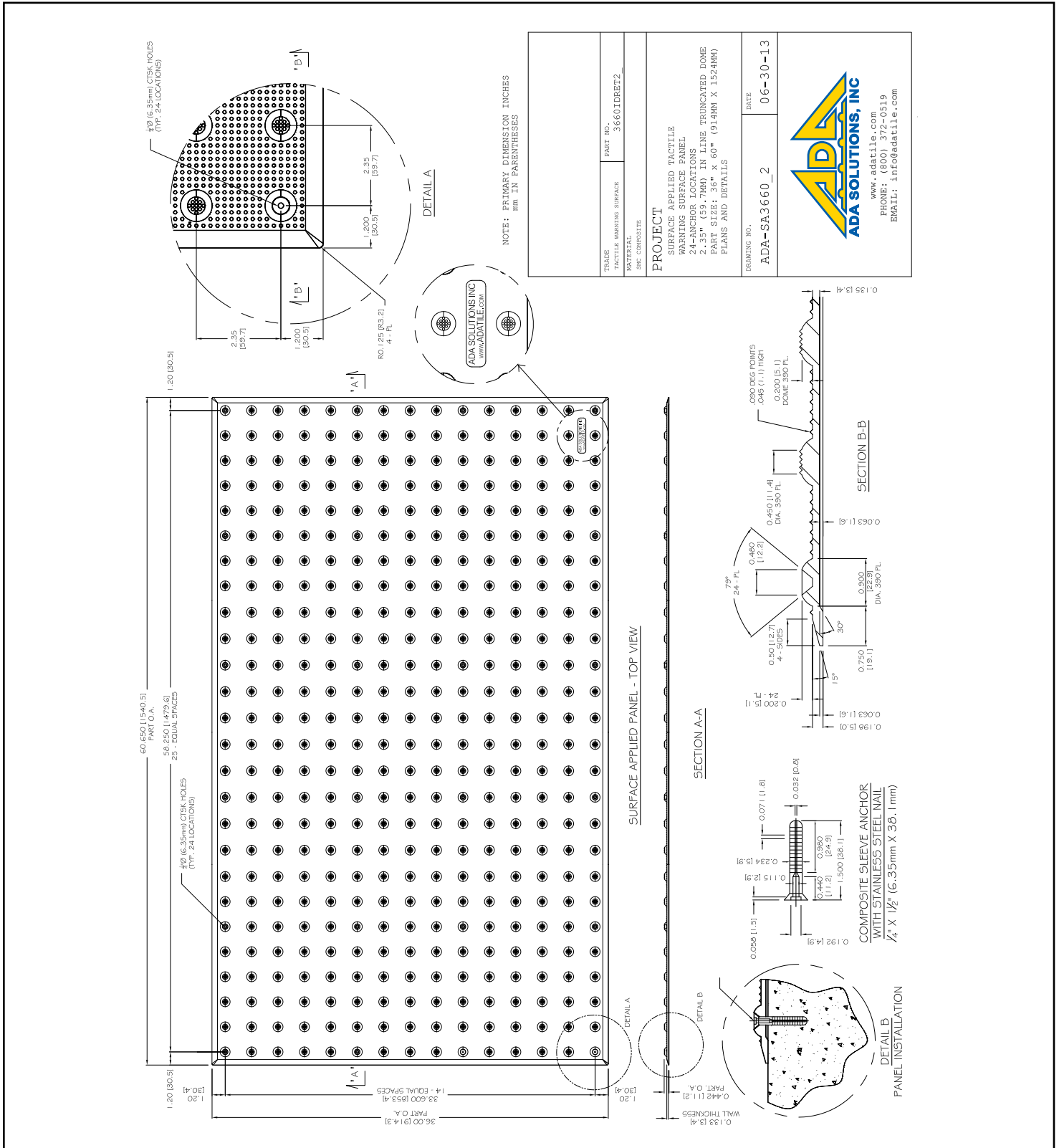
**DETAIL B**  
PANEL INSTALLATION

TRADE	TACTILE WARNING SURFACE	PART NO.	3648TDR2T2
MATERIAL	SMC COMPOSITE	PROJECT	SURFACE APPLIED TACTILE WARNING SURFACE PANEL
20-ANCHOR LOCATIONS PART SIZE: 36" x 48" (914MM X 1219MM) PLANS AND DETAILS			
DRAWING NO.	ADA-SA3648_2	DATE	06-30-13
 <b>ADA SOLUTIONS, INC</b> www.adatile.com PHONE: (800) 372-0519 EMAIL: info@adatile.com			



# SURFACE MOUNT COMPOSITE TACTILE

**36" x 60" (914 x 1524mm) Tile**  
**2.35" (59.7 mm) Dome Spacing**



www.adatile.com  
 PHONE: (800) 372-0519  
 EMAIL: info@adatile.com



Wherever you go...  
There we are™

- INDUSTRY LEADING SERVICE, DELIVERY AND PRICE
- ONE PIECE APPLICATION
- TIME-SAVING INSTALLATION
- CAST-IN-PLACE REPLACEABLE
- RADIUS REPLACEABLE (WET-SET)
- RADIUS SURFACE MOUNT
- SURFACE MOUNT (RETROFIT)
- CAST-IN-PLACE (WET-SET)
- BAR TILE SURFACE MOUNT
- BAR TILE REPLACEABLE (WET-SET)
- GUIDE TILE
- ADAAG COMPLIANT
- UNIFORM COLOR THROUGHOUT

PRODUCT INFORMATION / SUBMITTAL