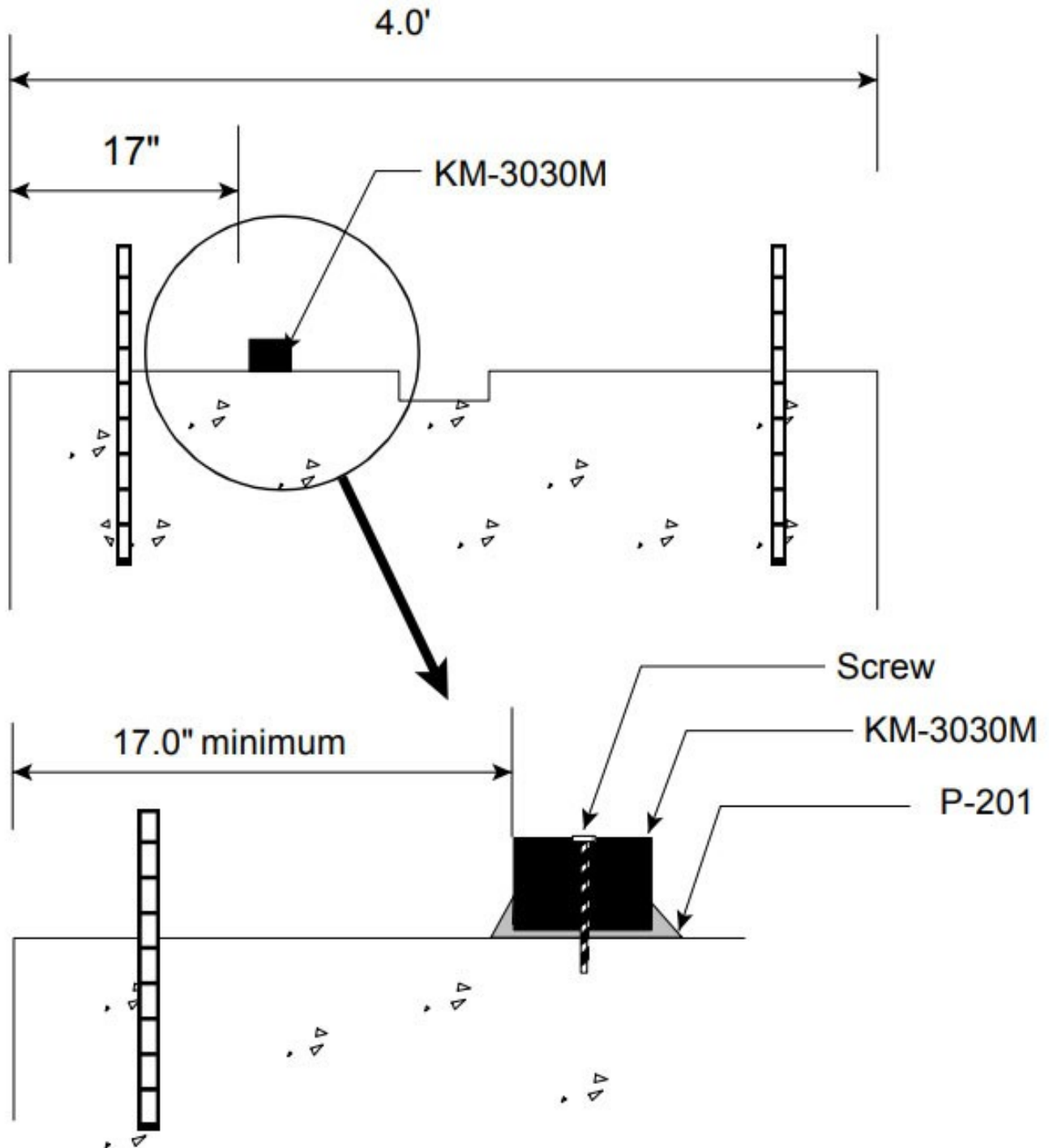


**Example of ADEKA ULTRASEAL® KM-3030M in a Construction Joint  
Four Foot Wide Concrete • Rough Concrete Surface • Below Water Level**

*Due to unknown concrete strength, 17" coverage is shown.  
4300" psi concrete will require only 14".*



**OCM, Inc.**

1120 Peterson Road, Grayslake, IL 60030

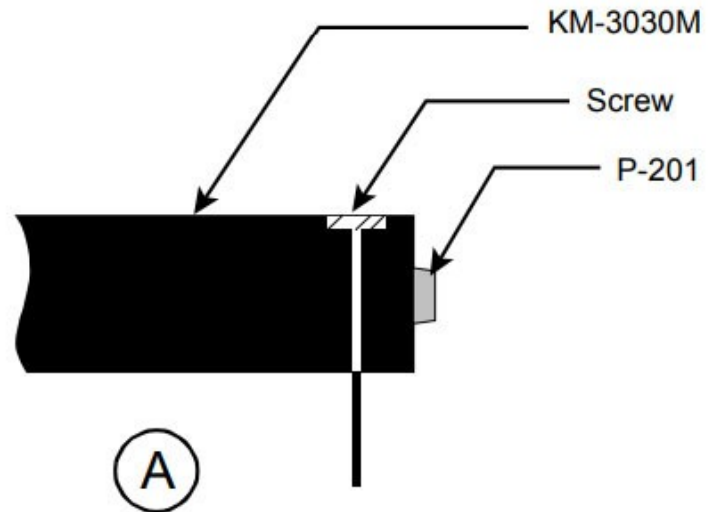
Toll Free: 866-457-5710 • Phone: 847-462-4258 • FAX: 847-462-4259

www.adeka.com • www.ocm-inc.com • sales@ocm-inc.com

## ADEKA ULTRASEAL® KM-3030M Splicing and Corners

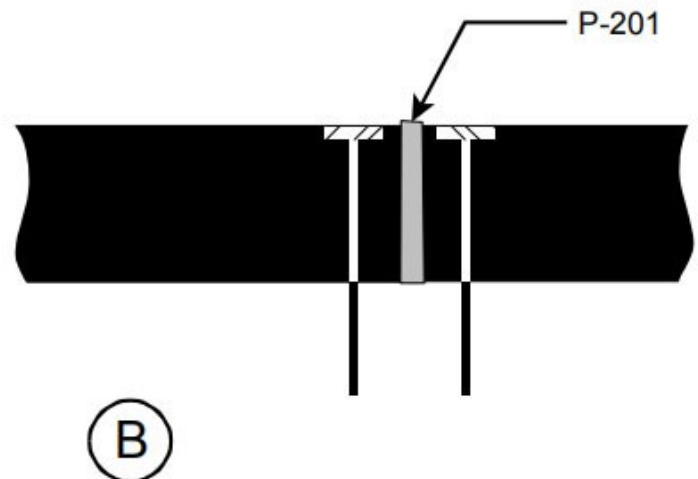
### A

1. Securely fasten segment end with a screw.
2. Apply bead of P-201 to the end as shown.



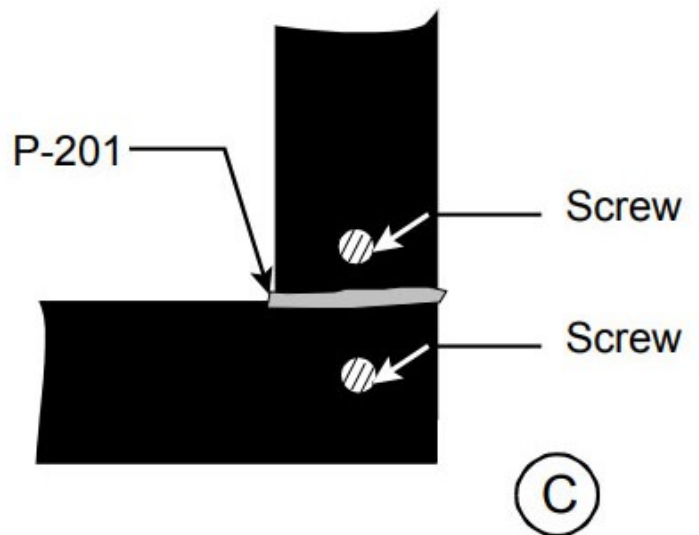
### B

1. Press the segment end of KM-3030M tightly against the first segment.
2. Fasten second segment with a screw.
3. Apply small bead of P-201 over the joint area.



### C - (Corner Joint)

1. Cut square and butt joint using same procedure as splice.



**OCM, Inc.**

1120 Peterson Road, Grayslake, IL 60030

Toll Free: 866-457-5710 • Phone: 847-462-4258 • FAX: 847-462-4259

www.adeka.com • www.ocm-inc.com • sales@ocm-inc.com