

ADEKA ULTRA SEAL® MC-2010MN ADVANTAGES

*** Permanent Waterstopping Function**

Under long term compression conventional rubber seals become distorted. Their resilience is reduced and they lose their waterstopping efficiency. Water - swelling rubber seals eliminate these disadvantages by relying on a natural, permanent physical phenomenon; osmotic pressure. This produces a continuous expansion force that in turn, allows the sealing efficiency to remain unchanged. Due to these unique features, even if fluctuation of the size or position of the aperture occurs, it is sealed effectively.

*** Easier and More Economical to Install**

In order to get sufficient waterstopping performance by resilience, it would be necessary to, either increase the hardness of conventional rubber seals, or to choose greater dimensions or complicated forms. The result is a heavy, complicated seal that is difficult to handle and install. In contrast, water swelling rubber seals expand in water. This results in seals of smaller sizes and less hardness that do the same job. These seals are not only easier to install, but save valuable time and money.

*** More Advanced - More Effective Performance**

This technically advanced, patented product is a unique "DOUBLE LOCKING" waterstop. This product can ensure greater protection against water intrusion than any other conventional waterstop available today, due to its ability to stop water two ways. Environmentally safe and durable, it retains its waterstopping properties over time, regardless of temperature change or contact with aggressive substances.

** MC-2010MN has an embedded stainless steel net to restrict expansion in length and width dimensions. The steel net directs expansion in the thickness dimension where it is most needed.*

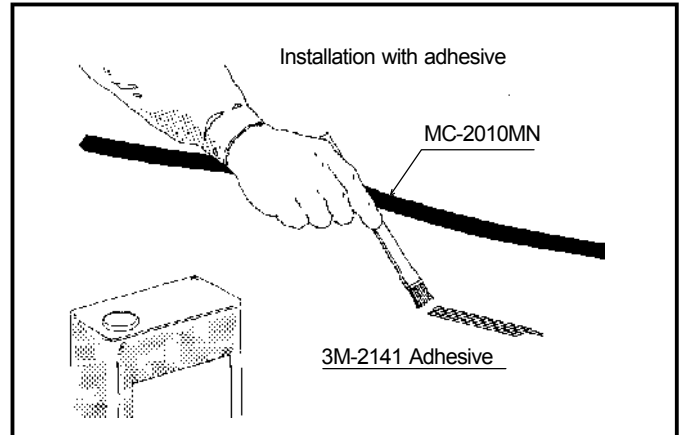
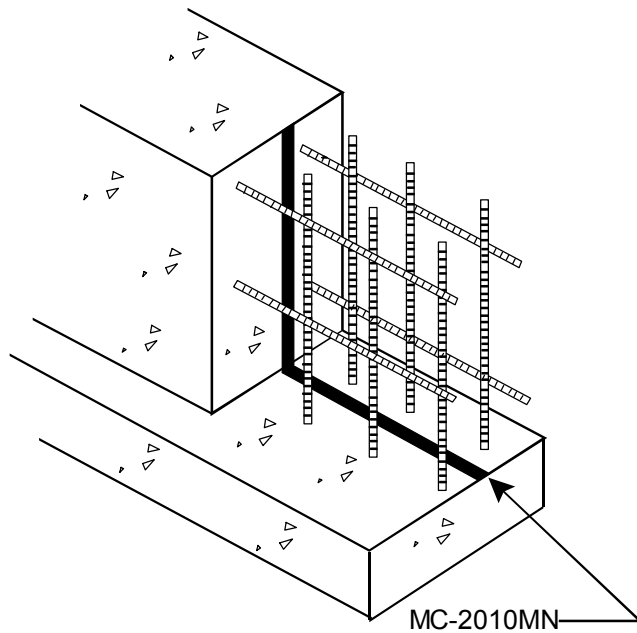
** Steel net prohibits "winding" and allows for placement of waterstop with a recommended minimum of 3.25~4.0 inches of concrete coverage from edge of waterstop to face of concrete depending on strength of concrete. See MC Coverage Chart or call 800.999.3959.*

** Three days premature exposure to water before installation is complete will not damage its function.*

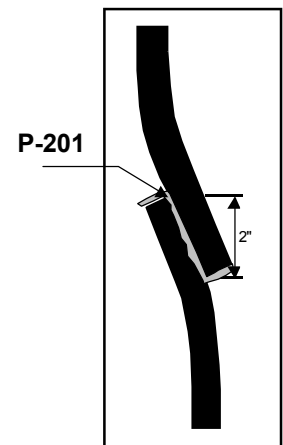
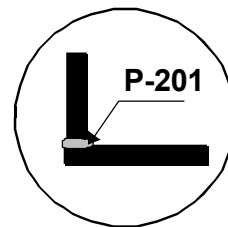
** Can be screwed, nailed or glued to concrete.*

** Replaces hard to install conventional PVC waterstops.*

ADEKA ULTRA SEAL[®] MC-2010MN ADVANTAGES



1. Easy and quick installation.
2. Screw, nail or glue in position.
3. One size fits all.
4. No special corners needed.
5. No welding. Overlap and use P-201.
6. No waste.
7. Environmentally safe.
8. Good chemical resistance.
9. Durable.
10. Wide temperature range.
11. Light weight



*The recommended concrete coverage is 3.25" ~ 4.0" depending on concrete strength. See concrete coverage chart or call 800.999.3959 for details.