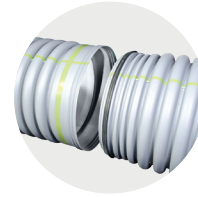


# N-12<sup>®</sup> & HP Storm: Corrugated Dual Wall Pipe Comparison

Engineers & regulators must weigh critical performance attributes to ensure long-term stormwater conveyance success. Advanced Drainage Systems, Inc. offers two industry-leading products, N-12 and HP Storm, to deliver superior performance in stormwater applications. The information below provides a side-by-side comparison so decision makers can choose the right solution with confidence.



## N-12 (HDPE)

- Smooth interior for efficient flow capacity
- Inline bell for streamlined installation process
- Inert material resists chemicals, abrasion & hot soils
- Lightweight design and long lay lengths improve installation efficiency and total installed cost

## HP Storm (PP)

- Improved safety factor for deep burials, traffic loading or variable soil & groundwater conditions
- Sanitary sewer joint performance
- Enhanced visibility during inspections
- Enhanced pipe stiffness

	N-12 (HDPE)	HP Storm (PP)
<b>Pipe Material</b>	High-Density Polyethylene (HDPE)	Polypropylene (PP)
<b>Pipe Color</b>	Black with ADS Green Stripe	Grey with ADS Green Stripe
<b>Diameters Available</b>	4"-60" (100-1500 mm)	12"-60" (300-1500 mm)
<b>Lengths Available</b>	13' & 20' (4 & 6 m)	13' & 20' (4 & 6 m)
<b>Pipe Weight</b>	4% vs. RCP (lb/ft)	4% vs. RCP (lb/ft)
<b>Wall Profile</b>	Dual wall - corrugated exterior, smooth interior	Dual wall - corrugated exterior, smooth interior
<b>Manning's n</b>	0.012	0.012
<b>Corrosion Resistance</b>	1.5 - 14 pH	1.5 - 14 pH
<b>Joint Features</b>	Reinforced inline bell & spigot	Extended reinforced inline bell & spigot (double gasket available regionally)
<b>Watertight Joint Performance (per ASTM D3212)</b>	Tested to 10.8 psi (74 kPa)	Tested to 15 psi (103 kPa)
<b>Pipe Stiffness</b>	Standard pipe stiffness in accordance with national standards	Up to two times greater pipe stiffness vs. HDPE
<b>Recommended backfill materials (per ASTM D2321)</b>	Class I, II, III	Class I, II, III, IV
<b>Maximum cover</b>	Varies with pipe diameter, backfill material and compaction. See Technical Notes 2.01 & 2.02.	Greater allowable burial depths and reduced soil compaction requirements. See Technical Note 2.04.
<b>Minimum cover</b>	1' (0.3 m) for 12"-48" (300-1200 mm) 2' (0.6 m) for 60" (1500 mm).	Same as N-12 but with greater resilience to live loading during construction when final grades may not yet have been achieved.



adspipe.com

800-821-6710