

### AMICO Architectural Series Expanded Mesh APEX Style 01 Carbon Steel

AMICO APEX Expanded Mesh  
Metals Limited only by Imagination

**PART 1 GENERAL**

**1.1 SCOPE**

- A. Supply expanded metal panels utilizing the manufacturers' standard materials.

**1.2 MATERIAL APPLICATIONS**

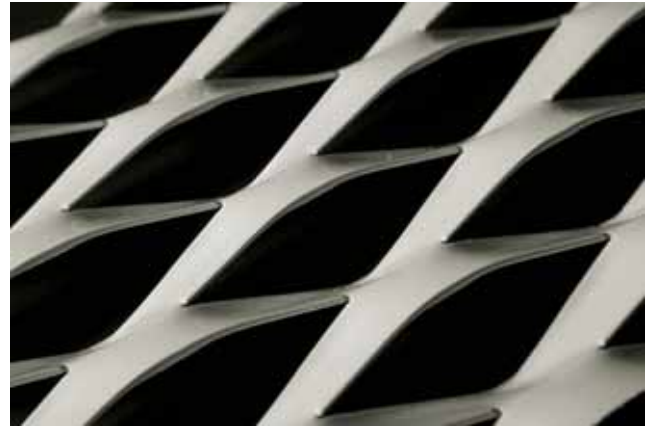
- A.

**1.3 BASE MATERIAL OPTIONS**

- A. Carbon Steel to ASTM A1011

**1.4 LEED ENVIRONMENTAL CATEGORIES AND CREDITS**

- A. Material and Resources
  - 1. MR Credit 4.1 and 4.2 for recycled content
  - 2. MR Credit 5.1 and 5.2 for regional materials
- B. Indoor Environmental Quality
  - 1. EQ Credit 4.1 for Low Emitting Materials
  - 2. EQ Credit 8.1 75-Percent Daylight and Views
  - 3. EQ Credit 8.2 90-Percent Daylight and Views
- C. Innovation in Design Credit 1.1
- D. Energy and Atmosphere
  - 1. EA Credit 1 Optimized Energy Performance



**2.3 ATTACHMENT HARDWARE**

- A. Fasteners shall vary by end use. Contact AMICO 800/366-2642 for attachment recommendations.

**2.4 FINISH SELECTION**

- A.
- B. Custom color shall be:

**PART 2 PRODUCTS**

**2.1 MANUFACTURER**

- A. Basis of Design: Expanded Meshes and attachment brackets are produced and distributed by Alabama Metal Industries Corporation, AMICO; 1080 Corporate Dr., Burlington, Ontario L7L 5R6; Attn: Phil Shevchenko; Telephone 800/663-4474 or email pshevchenko@gibraltar1.com .

**2.2 MATERIALS**

- B. Mesh Description: AMICO APEX 01 Carbon Steel

**PART 3 EXECUTION**

**3.1 INSTALLATION**

- A. Refer to AMICO, Phil Shevchenko telephone direct line 289/313-2211 for application specific installation recommendations.

Table 1. *Select material thickness and enter the panel dimensions in the table below.*

Product Submitted	Material Thickness	Opening Dimensions	Overall Thickness	Percent Open Area	Galvanized Weight (lbs. per ft <sup>2</sup> )	Color Coated Weight (lbs. per ft <sup>2</sup> )	Panel Dimensions Max. of 84" x 120"
	0.089"	2-3/8" x 6-1/2"	1-5/8"	46%	2.24 lbs.	2.30 lbs.	
	0.134"	2-3/8" x 6-1/2"	1-5/8"	46%	3.36 lbs.	3.40 lbs.	

All information contained herein is accurate as known at the time of publication. Specifications may change and AMICO reserves the right to change product specifications without notice and without incurring obligations.

**ALABAMA METAL INDUSTRIES CORPORATION**

3245 Fayette Avenue ♦ Birmingham, AL 35208 ♦ Telephone 800/366-2642 ♦ Facsimile 205/786-6527  
email fmayer@gibraltar1.com

Alabama Metal Industries Corporation  
September 2012

