

Alabama Metal Industries Corporation

Architectural Concepts Guide



A GIBRALTAR INDUSTRIES COMPANY 

Contents

Who we are	page 1
What is Expanded Metal?	page 2
What is Perforated Metal?	page 3
What is Grating?	pages 4-5
Solar Screening	pages 6-7
Balustrades	pages 8-9
Structural Support	pages 10-11
Ceilings	pages 12-17
Cladding	pages 18-29
Materials	page 30
Finishes	page 31
Lighting	page 32
APEX Expanded Mesh Range	page 33
APEX01 Samples	pages 34-35
APEX02 Samples	pages 36-37
APEX03 Samples	pages 38-39
APEX04 Samples	pages 40-41
Bilbao Samples	pages 42-43
Crescent Samples	pages 44-45
Venetian Samples	pages 46-47
Sunshade Samples	pages 48-49
Pisa Samples	pages 50-51
Expanded Mesh load tables	pages 52-53
Fasteners	pages 54-55
PEAK Perforated Metal	pages 56-67
SUMMIT Grating Range	page 68

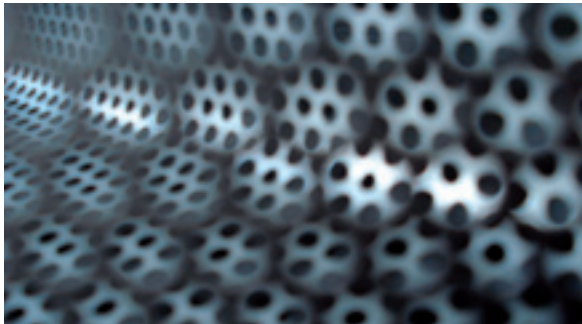
Who we are

AMICO is a manufacturer of high quality expanded metal mesh, perforated materials and architectural gratings. AMICO enjoys unrivalled expertise and understanding of manufacturing techniques, capabilities and applications.

As a manufacturer of a wide range of industrial and architectural products, our main objective is to find the correct product to help our customers achieve the right balance between industrial elegance and functionality.

Our design, engineering and fabrication capabilities allow us to help develop solutions to any architectural metals challenge. We are constantly pushing boundaries and developing new patterns, products and applications to increase awareness and raise the profile of our products in the architectural community. Our strengths stem from a committed, skilled and knowledgeable workforce coupled with world class machinery—providing us with unsurpassed engineering and technical support.

This Architectural Concepts Guide has been created to introduce you to new and exciting versions of the commonly known materials: expanded metal, perforated metal and gratings.



A GIBRALTAR INDUSTRIES COMPANY 

What is Expanded Metal?

The process for expanding metal was first patented in Hartlepool, UK, in the 1880's, and despite the amount of time which has elapsed since then, the process remains true to the original idea. Precious and specialty metals can all be expanded, as well as some plastics and other ductile materials. The process is simple but incredibly effective.

- > Sheets or coils of metal are fed into the expanding machine. A little metal can create a lot of mesh.



- > Each machine is fitted with a unique "knife," dedicated to a particular pattern.



- > The machines are then programmed or manually controlled to ensure the metal is expanded to the exact specification.



- > Using the unique shearing and stretching process means very little waste is created.

The metal is sheared and then stretched in a single process creating the apertures and therefore expanding the metal. Custom knives can be manufactured to create a design for your exclusive use. The mesh is then either cut into sheets or wound onto coils ready for shipping or further processing.



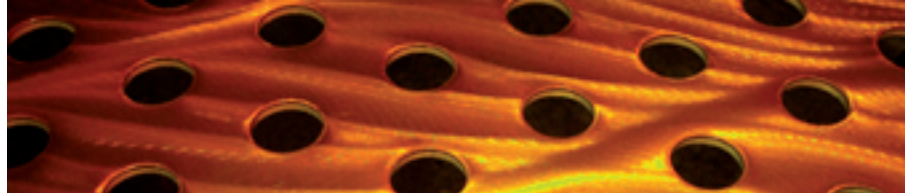
What is Perforated Metal?

Simply stated, it is “metal with holes in it.” Our massive inventory of perforated punches will help achieve your design intent—from simple rounds, squares, slots, and hexagons to the more elaborate textured, embossed and image-transfer perforating.



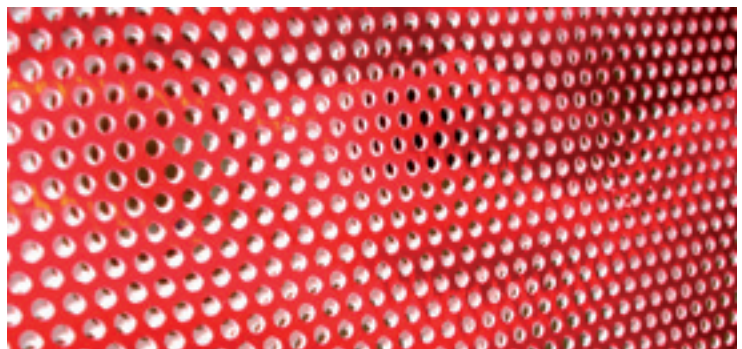
> Sheets or coils are fed into the perforating press. All scrap generated from the punching process is recycled.

> Each perforating press can be fitted with a unique “punch” dedicated to a particular pattern.



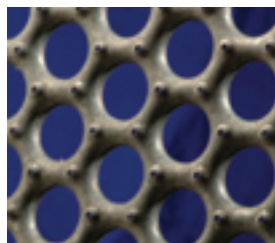
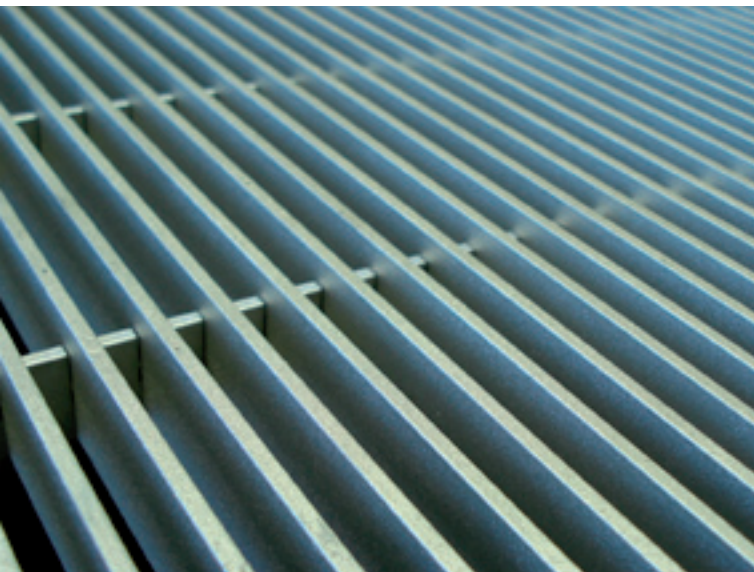
> The machines are then programmed or manually controlled to ensure the material is perforated to the exact specification.

> Special notches, margins, bends and bolt holes can also be added making the installation or mounting of the product simple.

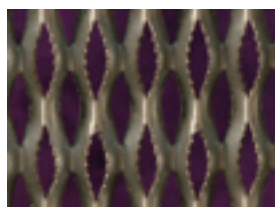


What is Grating?

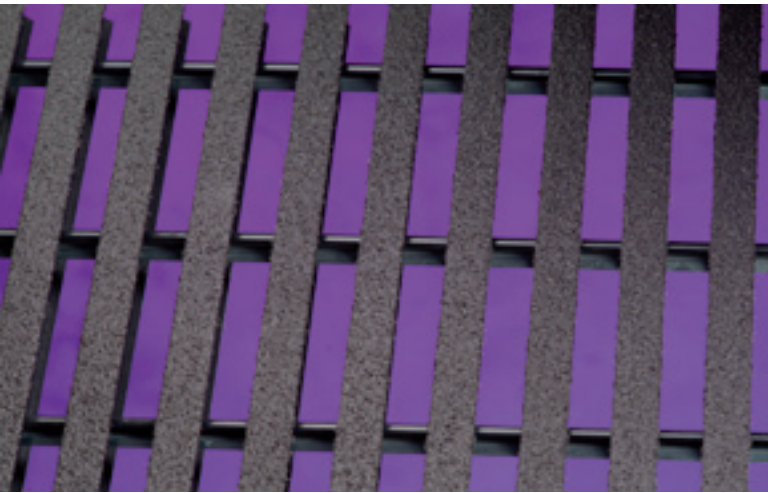
Commonly found in applications such as walkways and trench covers, AMICO gratings are becoming more commonplace in architectural highlights such as sunshades, railings, ceilings and façades. Steel, Aluminum, Stainless Steel and Fiberglass bearing bars and cross rods are either welded, pressed or swaged together to form a structurally sound grid. Our close mesh ADA Compliant gratings offer great solutions for building entrances.



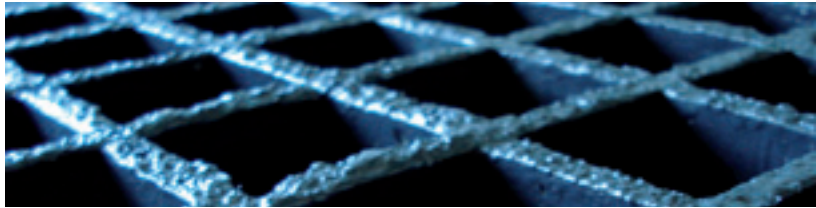
> Safety-Grip has a surface that consists of large, debossed holes which are surrounded by embossed, perforated traction buttons. This design provides a multidirectional, slip-resistant surface. With up to 50% free air opening, Safety-Grip allows excellent passage of light and air, and drainage of fluids and debris.



> The surface of Diamond-Grip consists of diamond-shaped openings with serrated edges along the top of the diamonds. This design offers a hard-wearing, slip-resistant walking surface that allows drainage of fluids and debris.



> Fiberglass reinforced composite gratings compensate for the shortcomings of conventional materials by providing a high-strength, light-weight, low maintenance option. Fiberglass grating is particularly well-suited to urban and salt air corrosive environments.



Solar Screening

Expanded Metals, Perforated Metals and Gratings are a great way to help reduce the solar gain into buildings, in turn reducing the amount of energy required to run HVAC systems.



Des Moines Library, USA, features encapsulated expanded metal within glass to achieve this stunning Day/Night effect.

AMICO Custom Copper Small Mesh
David Chipperfield Architects



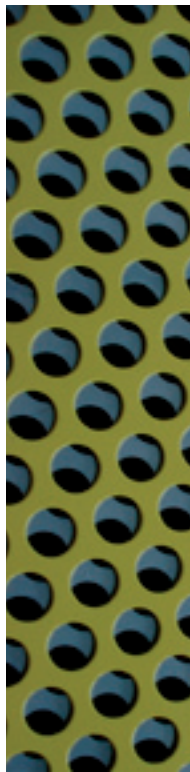
A large portion of the UBC Biodiversity Research Centre uses gratings in multiple locations to cut down on solar gain.

Patkau Architects



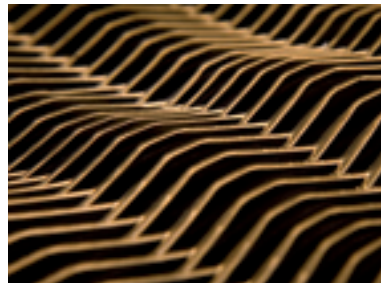
Stainless steel perforated mesh helps protect The San Francisco Federal Building from solar heat gain.

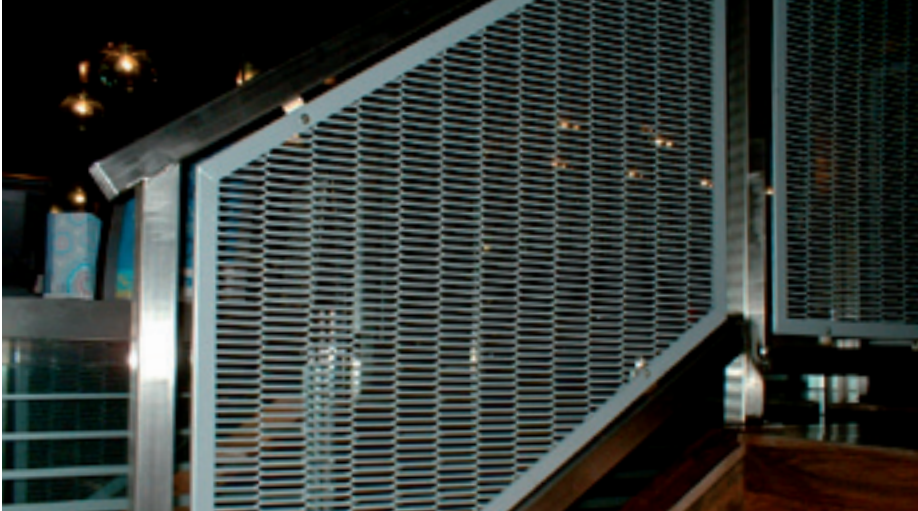
1/4" on 5/16" Staggered Perforated Stainless Steel
morphosis Architects



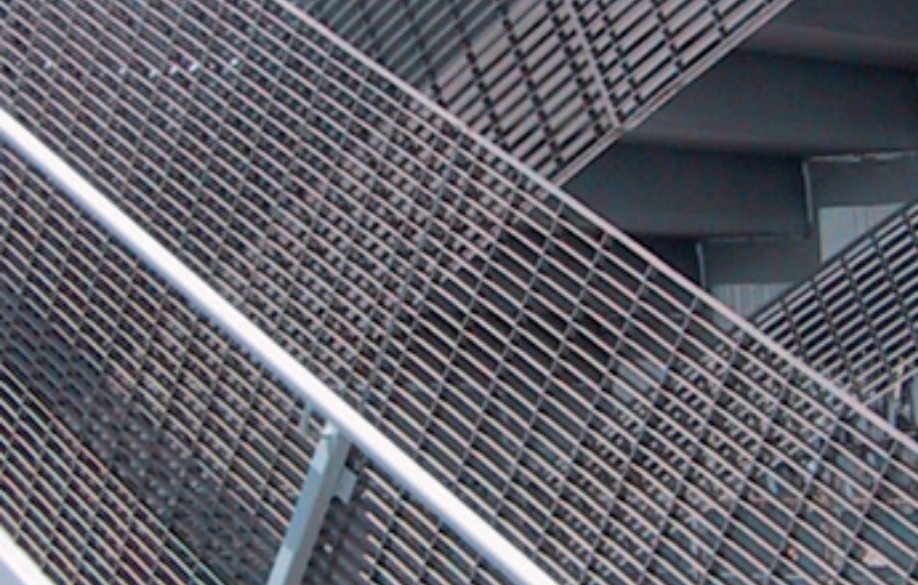
Balustrades

Ease of fabrication and the custom nature of our products allows expanded, perforated and gratings to be easily incorporated into your unique designs.





Incorporating AMICO products into railings and balustrades allows you to effortlessly bridge the gap between aesthetics and safety.

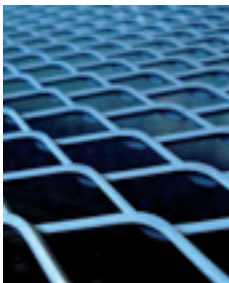


Structural Support



Many large scale projects have entrusted AMICO to provide solutions for structural walkway applications.

Kew Gardens Treetop Walkway
marks barfield architects



Traditionally, expanded metal mesh has been used to act as a support and a key for plaster and render. Progressing these applications one stage further, AMICO has developed the material to act in a supporting role on much larger projects. Expanded metal can be curved on both elevation and plan to create a shaped and sculptured structure or add strength and support.

Selfridges, London
Future Systems Architecture



Industrial walkway grating is exceptionally strong and ideal for applications which require structural support over broad spans. Over 32,850 square feet of AMICO serrated grating was installed on the world's largest single-span roof structure at the Dallas Cowboy's Stadium.

HKS Architects



Ceilings



555 6th Avenue
AMICO APEX01 Expanded Aluminum Mesh
ODA Architecture

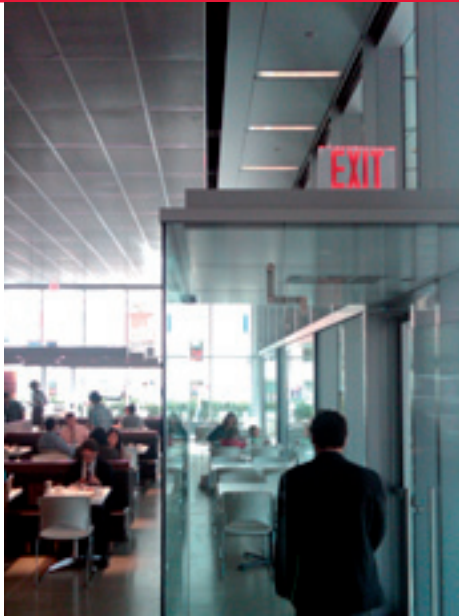
The structure of expanded metal aides the disruption of sound waves, deadening noise and reducing echo.

This practical feature of the material, in conjunction with its already proven architectural features make it perfect for decorative ceiling tiles. The open area of the mesh allows sprinkler systems to work effectively whilst hiding the unsightly sprinklers.

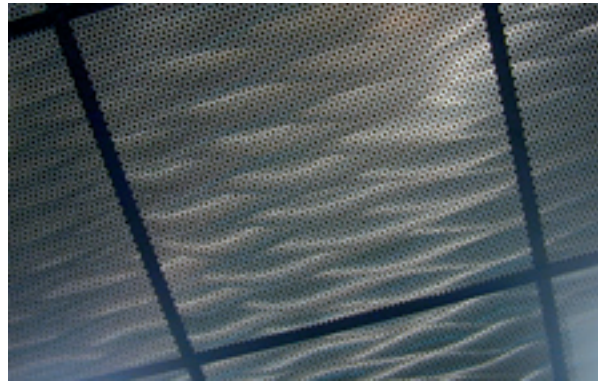


Robert Restaurant at MAD Museum
AMICO APEX03 Expanded Aluminum Mesh
David Schefer Design, LLC

O&B Canteen at tiff. | Bell Lightbox
AMICO Custom Expanded Aluminum Mesh
KPMB Architects

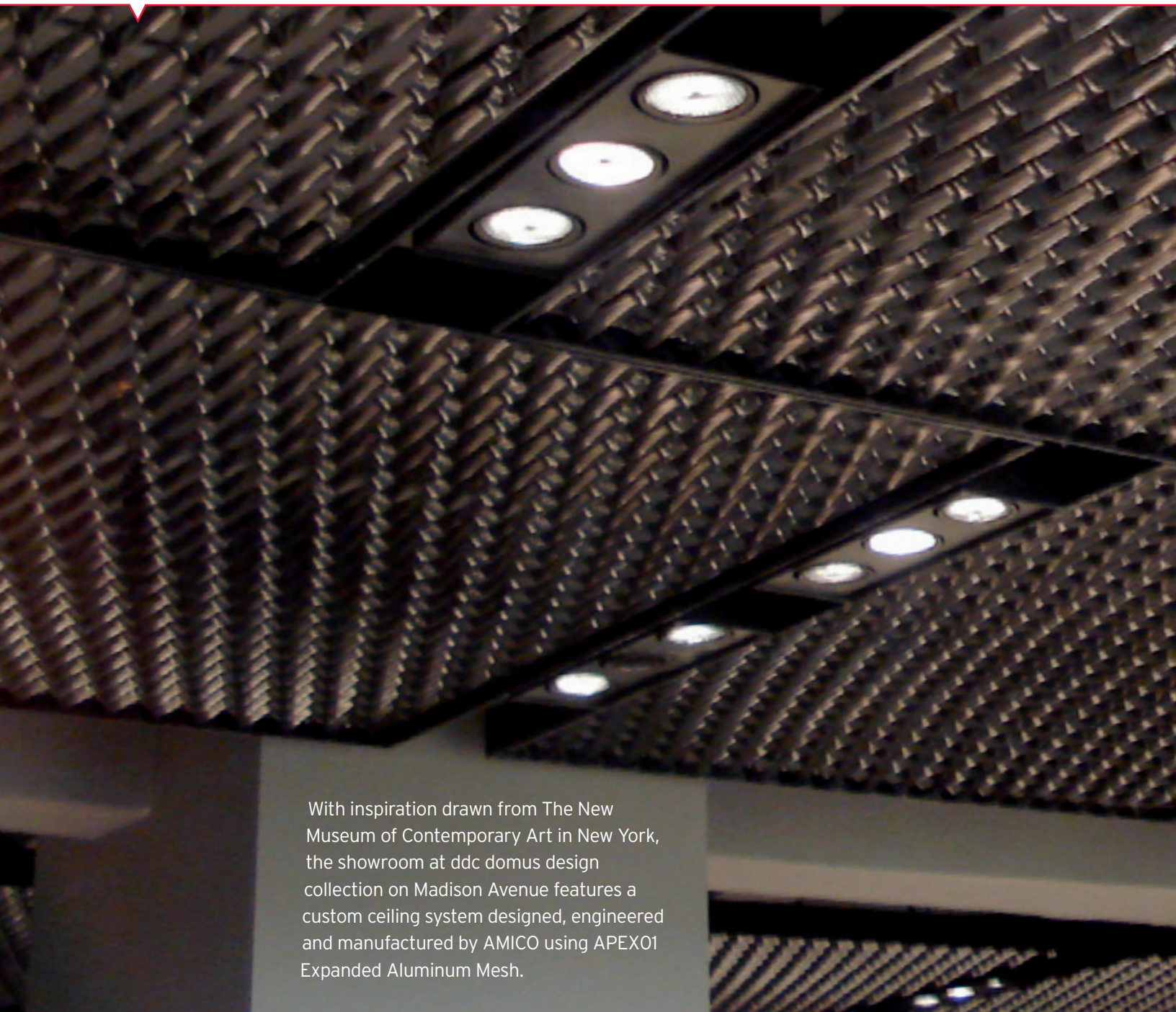


Perforated metal has become a staple material in the design of many modern ceilings. Due to its highly custom nature, this material allows for effortless creation of new designs.

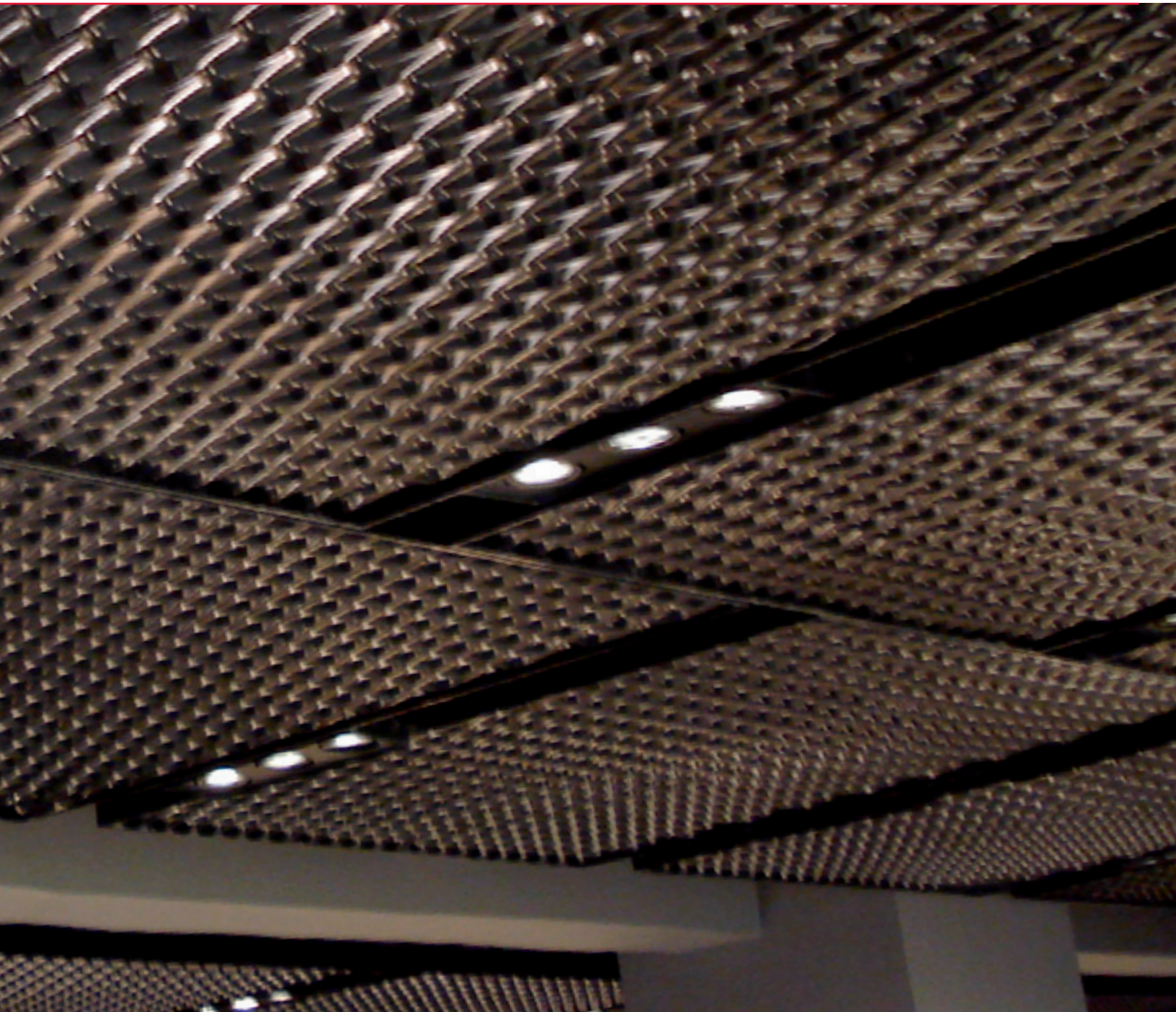


Théâtre du Vieux-Terrebonne
AMICO Sunrise Expanded Steel Mesh
Atelier Tag with
Jodoin Lamarre Pratte Et Associes Architectes

Ceilings

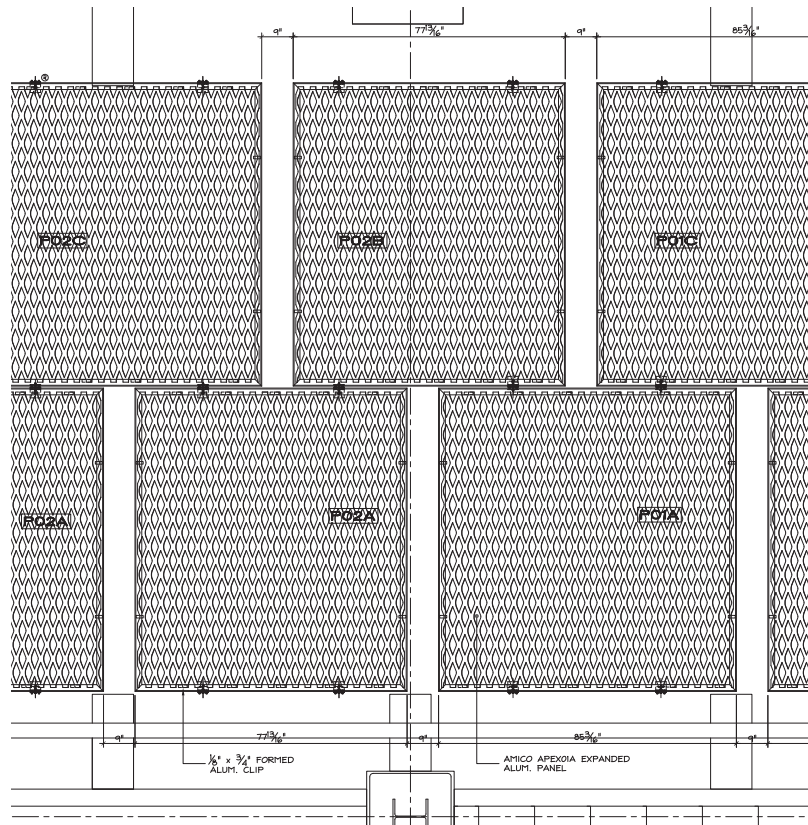
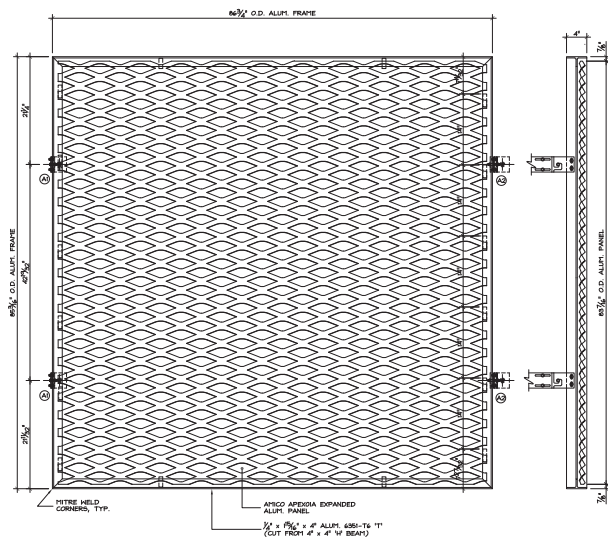
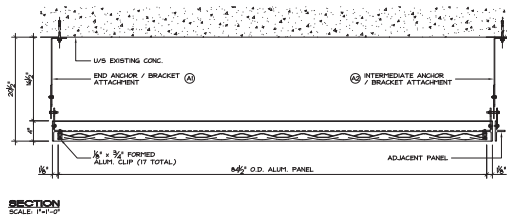


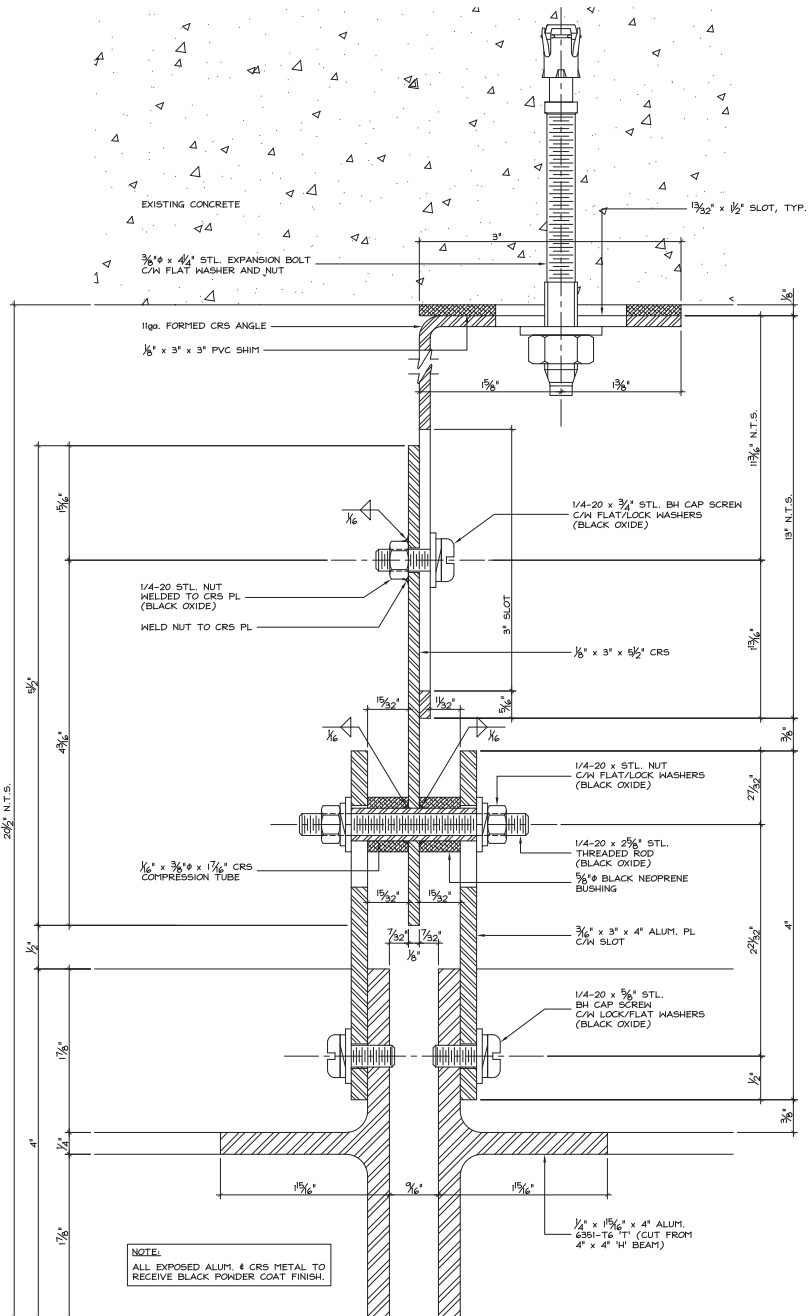
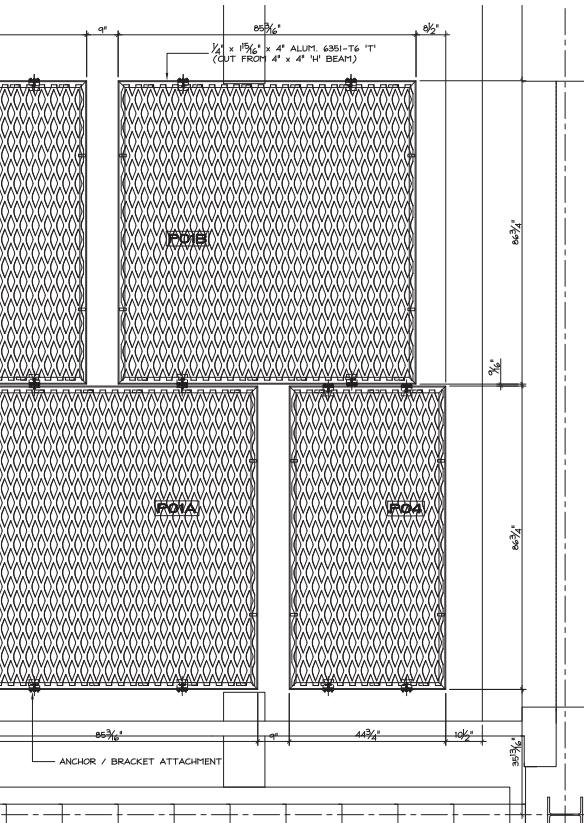
With inspiration drawn from The New Museum of Contemporary Art in New York, the showroom at ddc domus design collection on Madison Avenue features a custom ceiling system designed, engineered and manufactured by AMICO using APEX01 Expanded Aluminum Mesh.



AMICO Fabricated Systems

AMICO's design and engineering teams will work with you to create custom systems which meet your performance and aesthetic requirements. Our skilled team of fabrication specialists will ensure your project is delivered on-time and on-spec.





Cladding



Prémont Harley-Davidson
Quebec, Quebec
AMICO APEX01 Expanded Aluminum Mesh
DMG architecture



Cladding



Photo by phebusphotography

Southland Christian Church, Lexington, KY
AMICO APEX03 Expanded Aluminum Mesh
EOP Architects



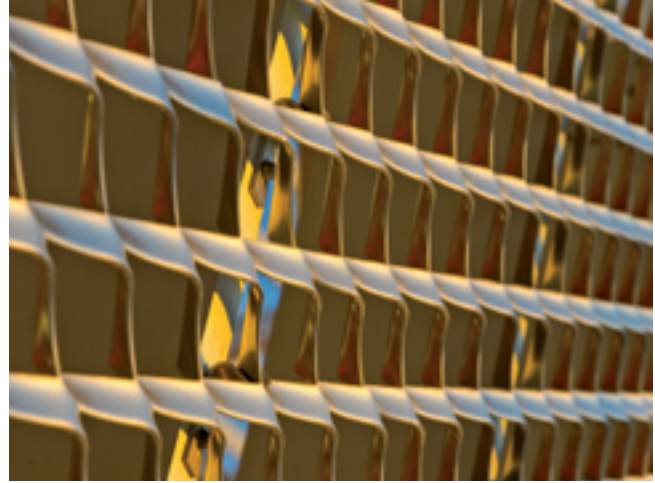
Cladding



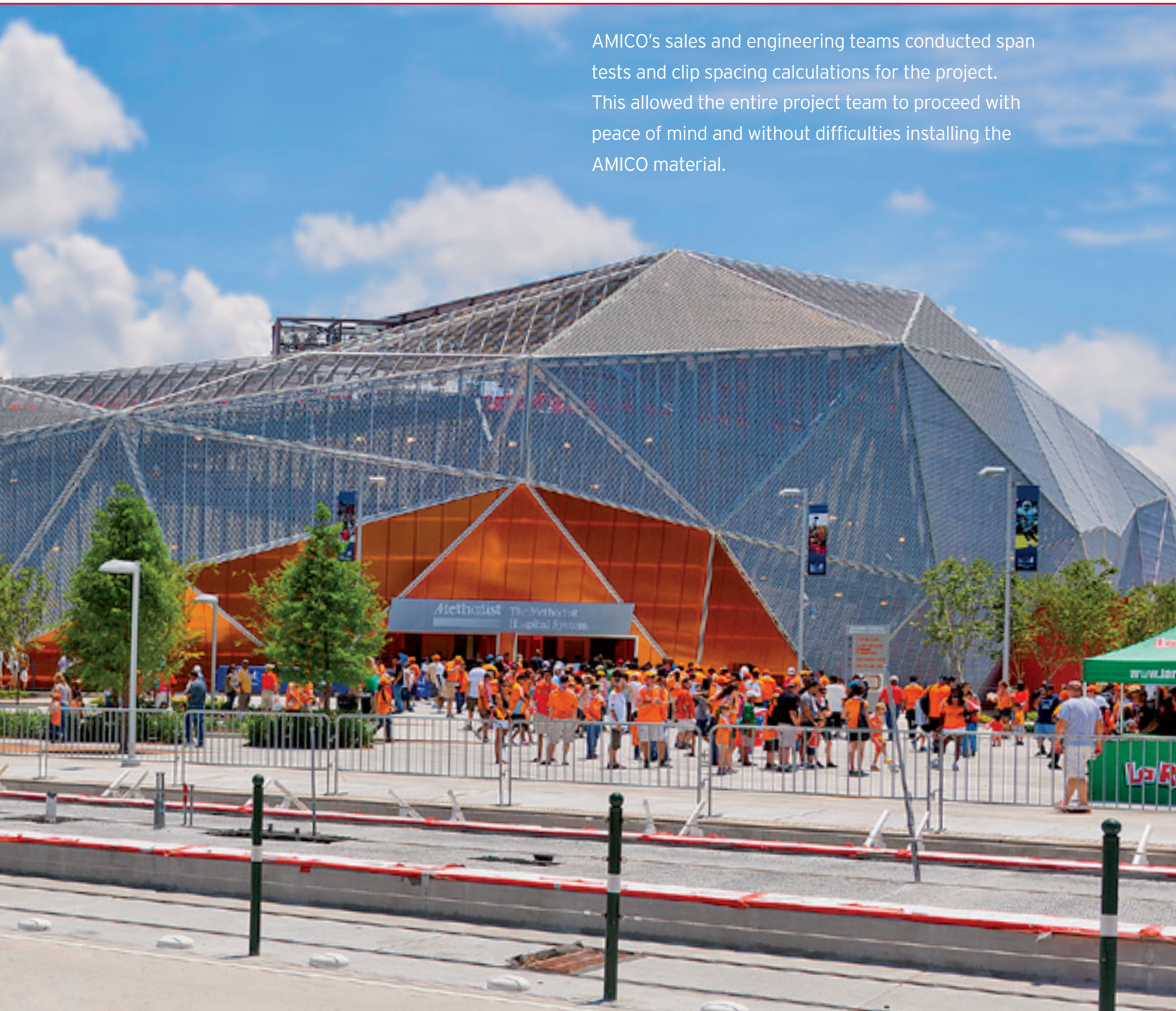
Photo by G. LYON PHOTOGRAPHY, Inc.

Over 100,000 square feet of AMICO's APEX01 Clear Anodized Expanded Aluminum Mesh was unanimously chosen to clad the Houston Dynamo BBVA Compass Stadium. The industrial heritage of the neighborhood is elegantly reflected in both the stadium's distinctive mesh skin and interior signage.

POPULOUS



AMICO's sales and engineering teams conducted span tests and clip spacing calculations for the project. This allowed the entire project team to proceed with peace of mind and without difficulties installing the AMICO material.

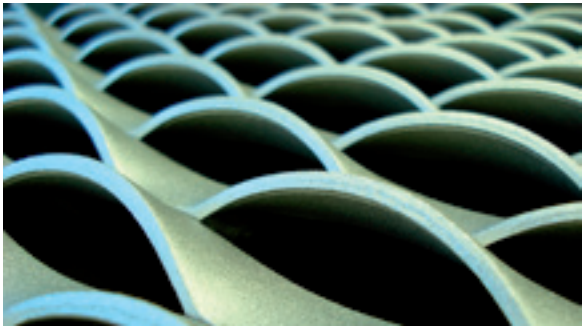


Cladding

16' x 4' sheets of AMICO's 2 lb. Clear Anodized Expanded Aluminum Mesh clad the Portland Aerial Tram. A system of stainless steel cables and customized attachment brackets holds the mesh panels in place.

agps.architecture

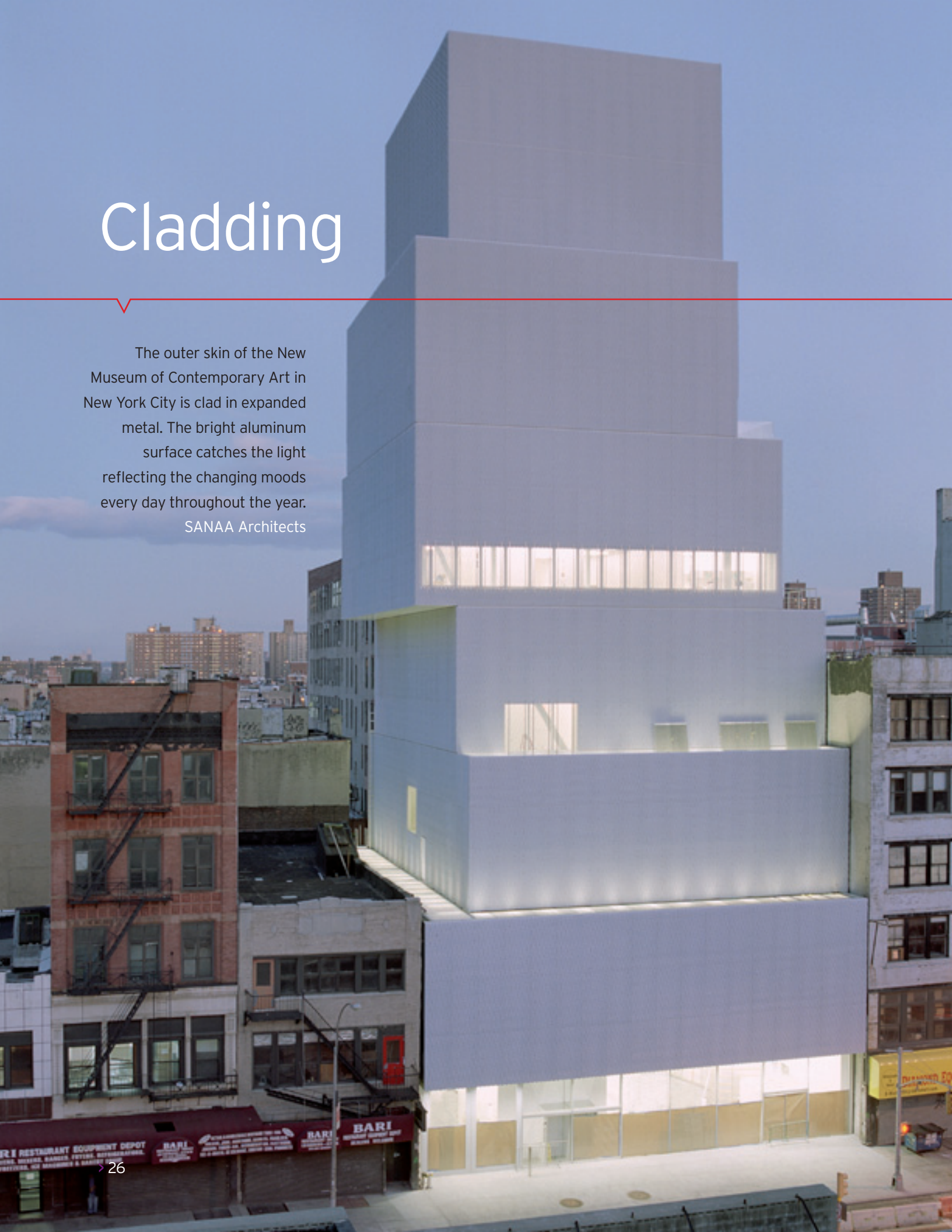
Located in Sudbury, Ontario Canada, the Grace Hartman Amphitheatre is clad with AMICO's APEX04 Clear Anodized Expanded Aluminum Mesh, giving its facilities stage canopy and perimeter fencing a distinctive facade. Castellan James + Partners Architects Inc.

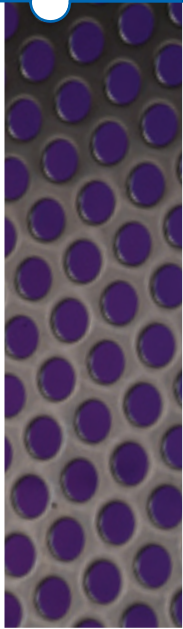
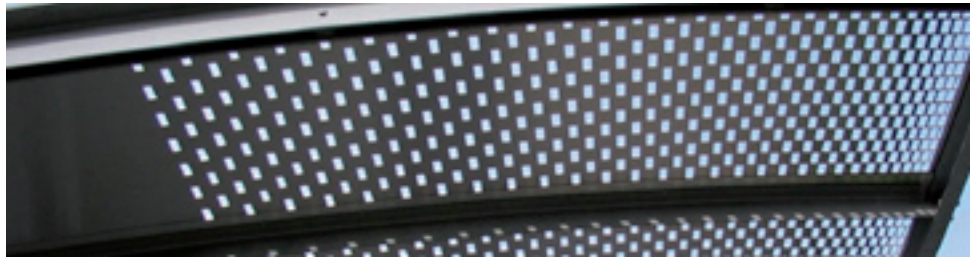


Cladding

The outer skin of the New Museum of Contemporary Art in New York City is clad in expanded metal. The bright aluminum surface catches the light reflecting the changing moods every day throughout the year.

SANAA Architects



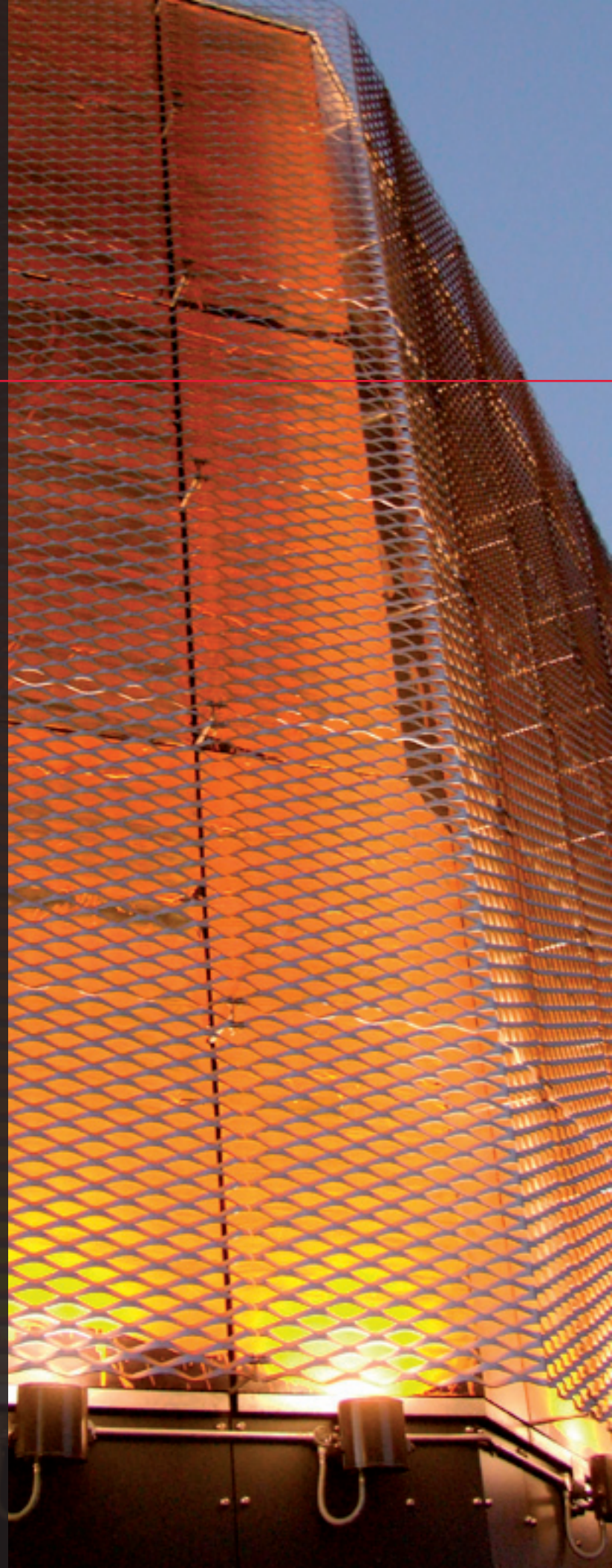


Los Angeles High School #9
1" on 1-3/8" Staggered Perforated Stainless Steel
Coop Himmelb(l)au Architects

Cladding

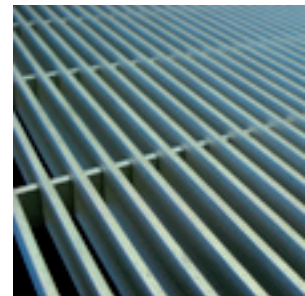
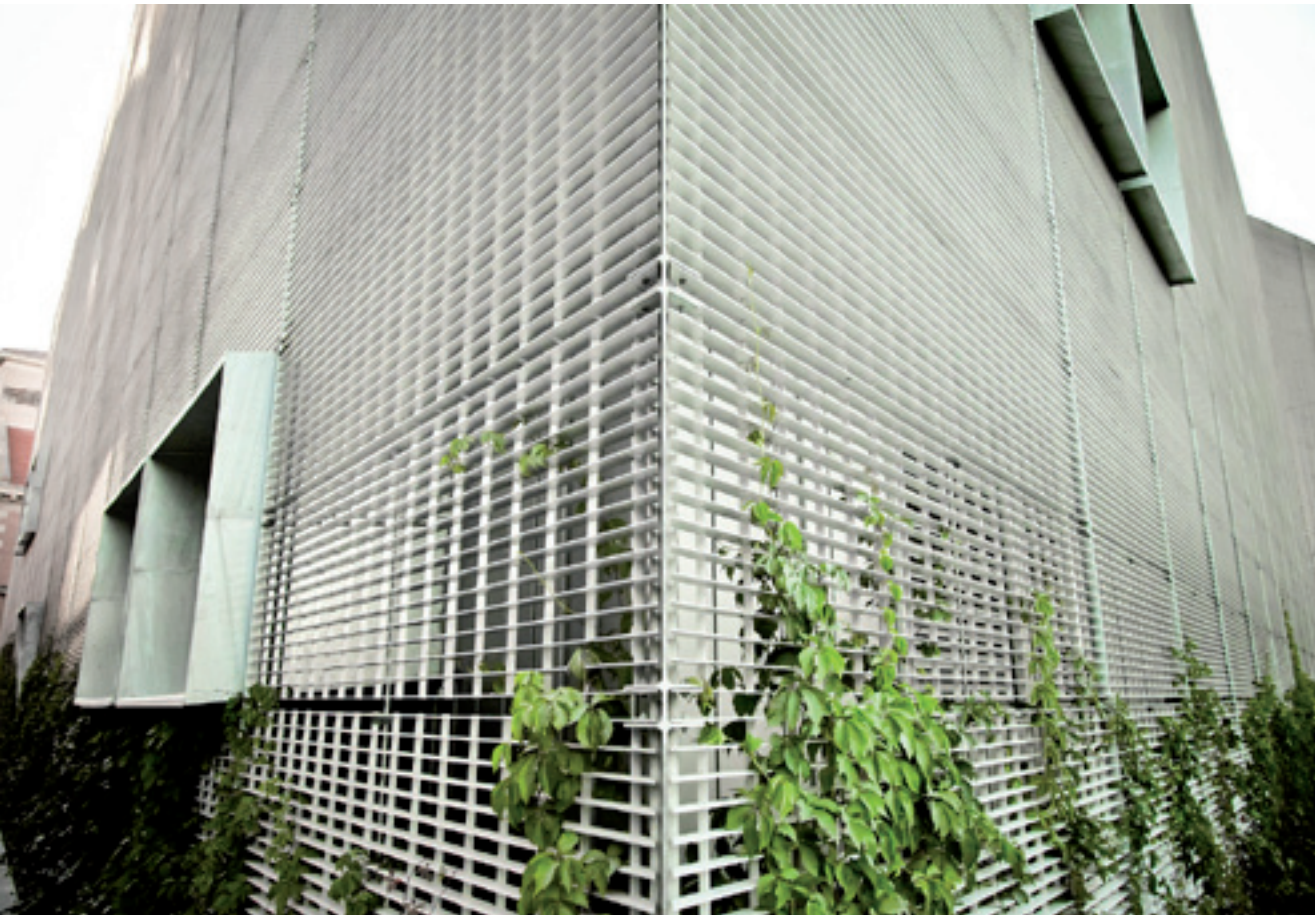
Expanded metal is an ideal material for external cladding. Expanded metal cladding has become particularly popular in recent years and can be seen on The Young Vic Theatre in London.

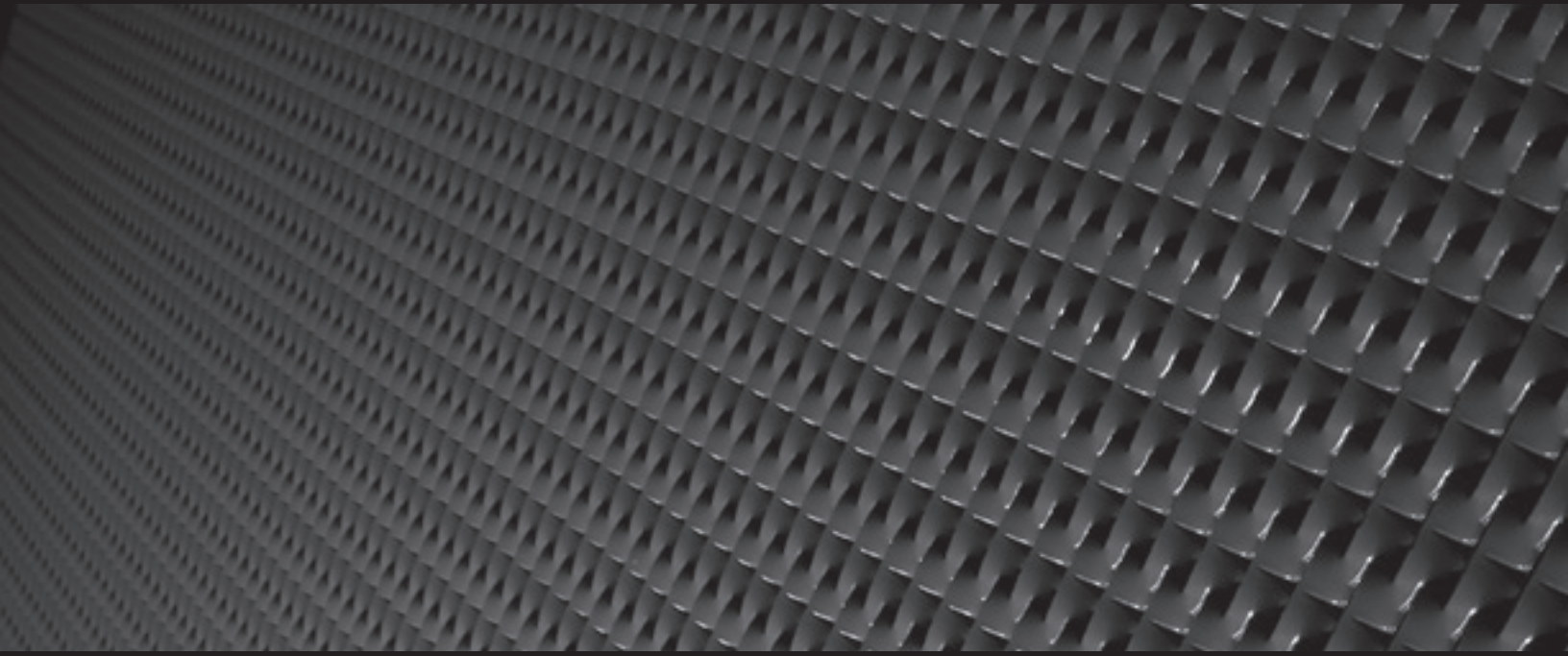
AMICO AEPX02 Expanded Aluminum Mesh
Haworth Tompkins architects





AMICO Press Locked 38-AP-8 Aluminum Grating
University of Manitoba ARTlab
LM Architectural Group

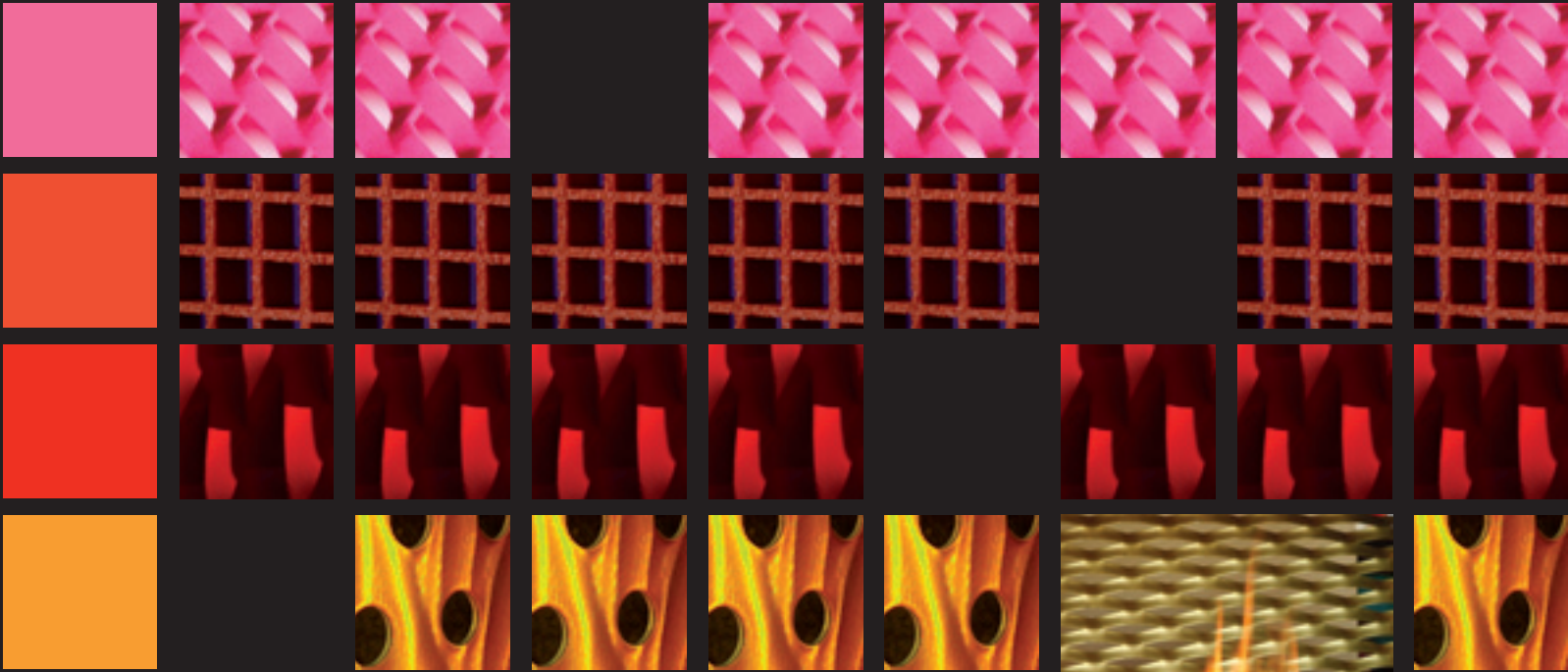




Materials

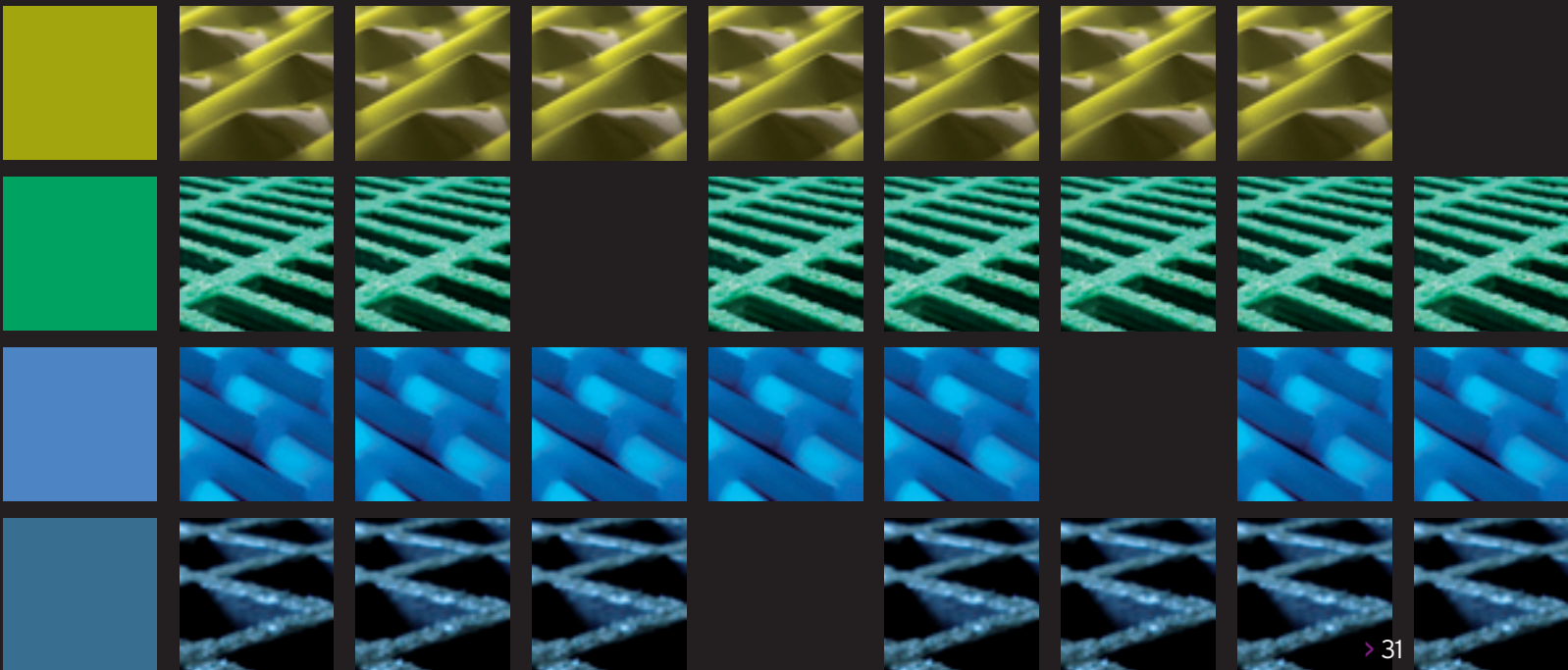
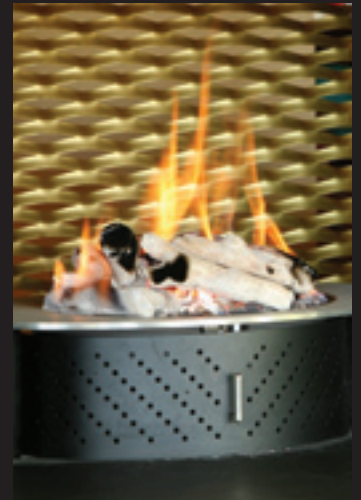
Most malleable materials can be expanded, perforated and produced into gratings with mild steel, aluminum and stainless steel being the most common. However, more fashionable, precious metals such as brass, copper, gold—even platinum and titanium—can be manufactured into AMICO products. Each of these materials has its own “special” characteristics: aluminum gives lightweight longevity, steel brings strength, and copper ages beautifully, maturing to stunning verdigris.

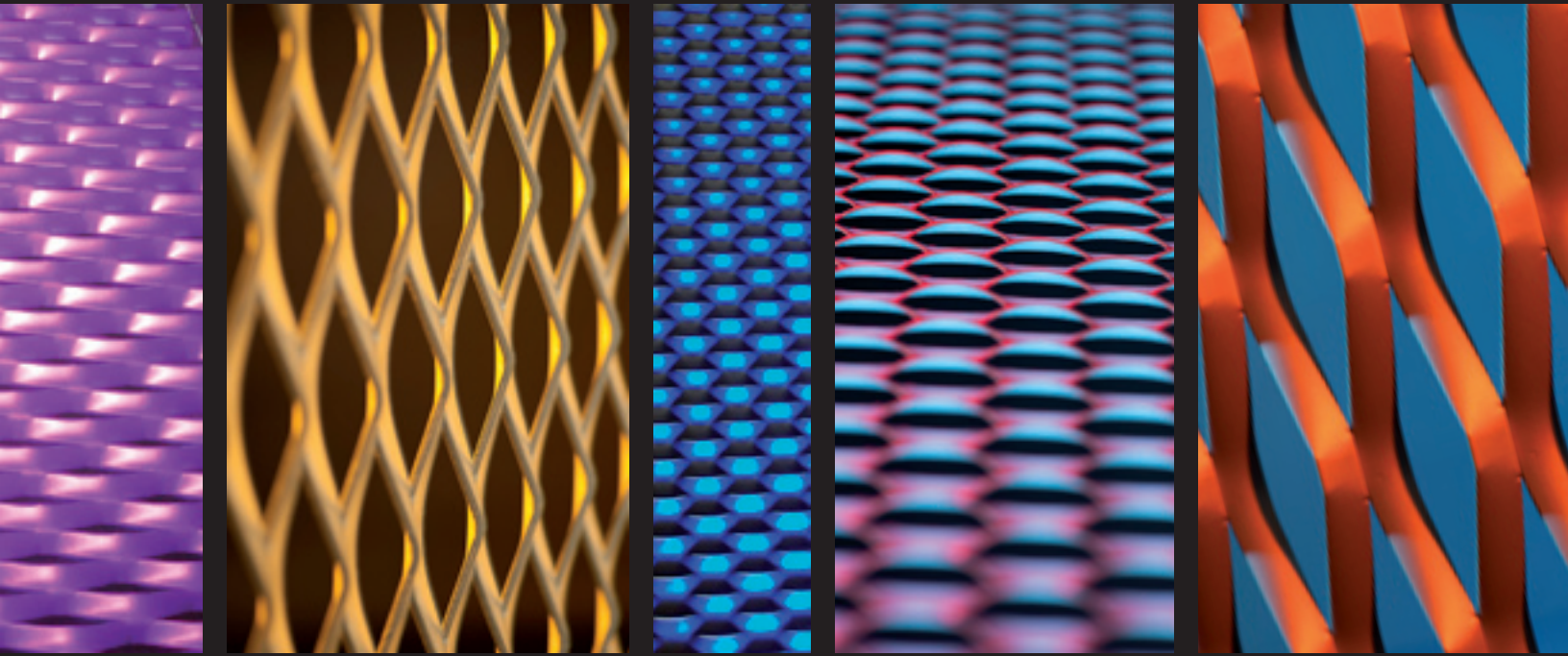




Finishes

AMICO products can be anodized, powder coated, galvanized or painted with a fluoropolymer paint. These finishes help protect and add color to our base materials creating stunning visual effects.





Lighting

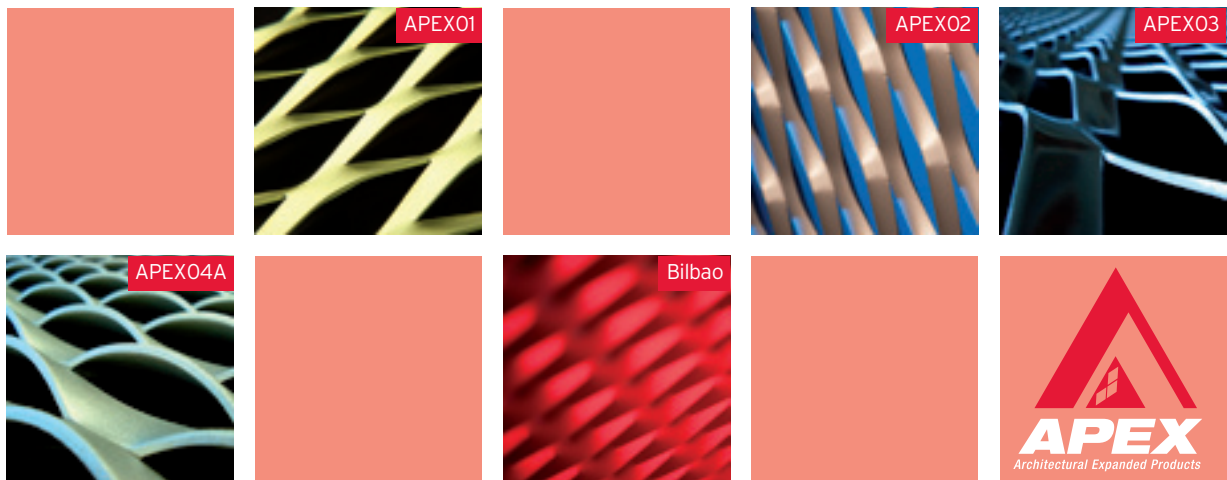
The combination of lighting and AMICO Expanded Mesh products yields stunning visual effects. The complex three-dimensional surface of AMICO Expanded Mesh, in combination with various light fixtures, creates curious shadows and an array of light and dark hues.

LED strip lighting was used on the Southland Christian Church project, yielding an astounding wash of light and color on the exterior screen wall.



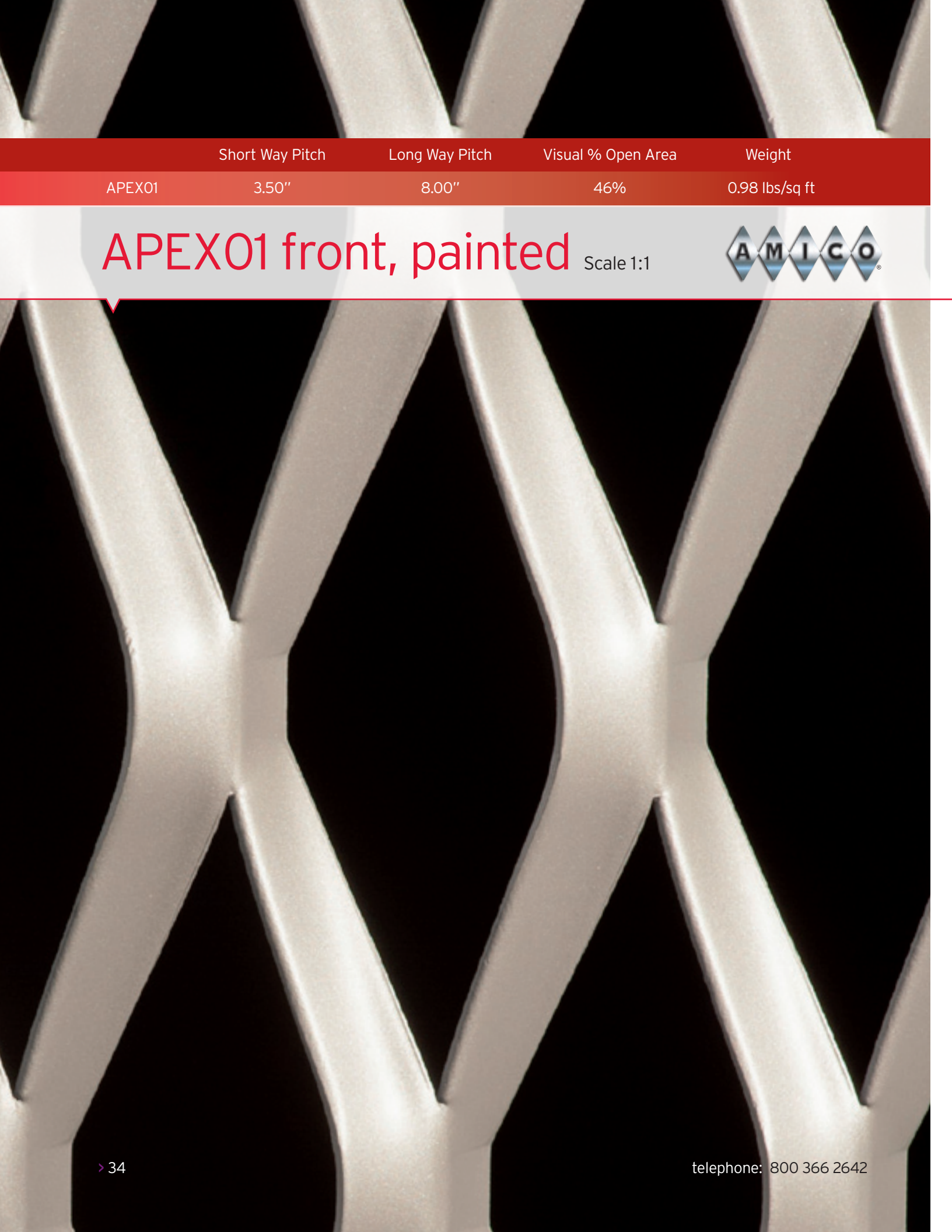
APEX Expanded Mesh Range

Inspired by some of the finest new architecture appearing across the world, these meshes sit at the forefront of modern design. Soft curves and unusual apertures combine to present mesh that can blend seamlessly into its surroundings or make a bold architectural statement.



	Short Way Pitch	Long Way Pitch	% of Open Area
APEX01	3.50"	8.00"	46%
APEX02	3.50"	8.00"	46%
APEX03	2.50"	6.00"	24%
APEX04	1.33"	3.00"	6.25%
Bilbao	1.50"	4.00"	15%

This chart represents only a small sample of available patterns. AMICO can manufacture to your specifications.



	Short Way Pitch	Long Way Pitch	Visual % Open Area	Weight
APEX01	3.50"	8.00"	46%	0.98 lbs/sq ft

APEX01 front, painted

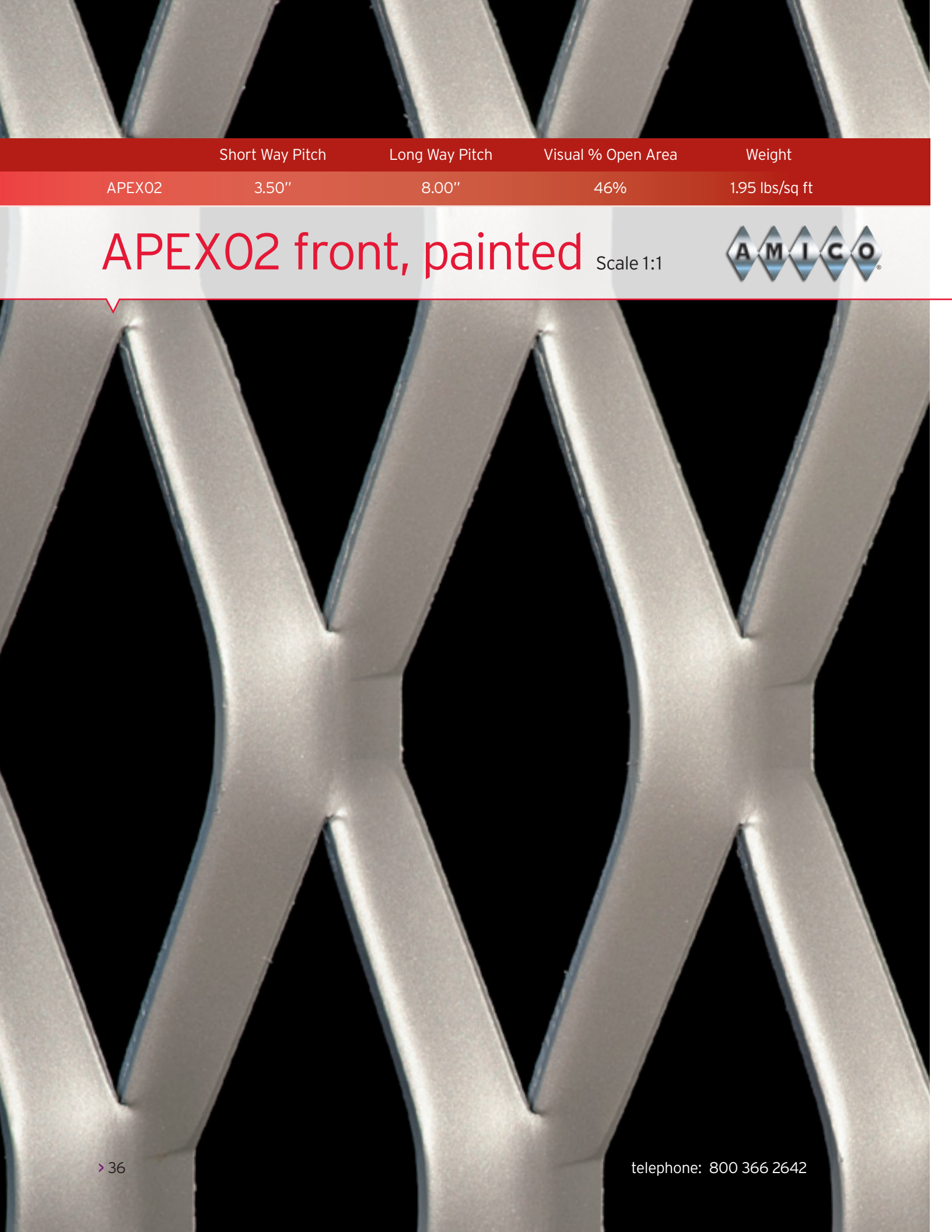
Scale 1:1



APEX01 back, painted

Scale 1:1





	Short Way Pitch	Long Way Pitch	Visual % Open Area	Weight
APEX02	3.50"	8.00"	46%	1.95 lbs/sq ft

APEX02 front, painted

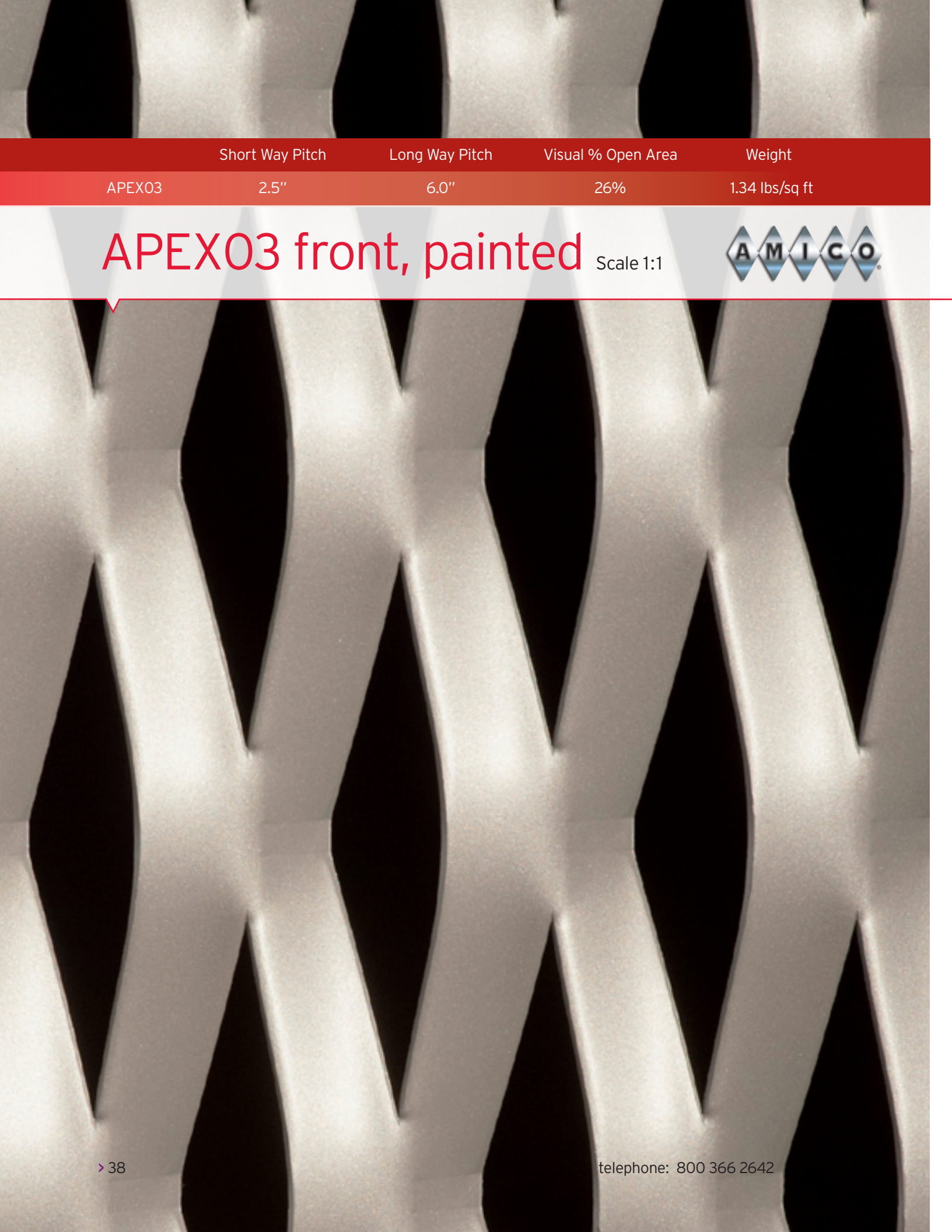
Scale 1:1



APEX02 back, painted

Scale 1:1





	Short Way Pitch	Long Way Pitch	Visual % Open Area	Weight
APEX03	2.5"	6.0"	26%	1.34 lbs/sq ft

APEX03 front, painted

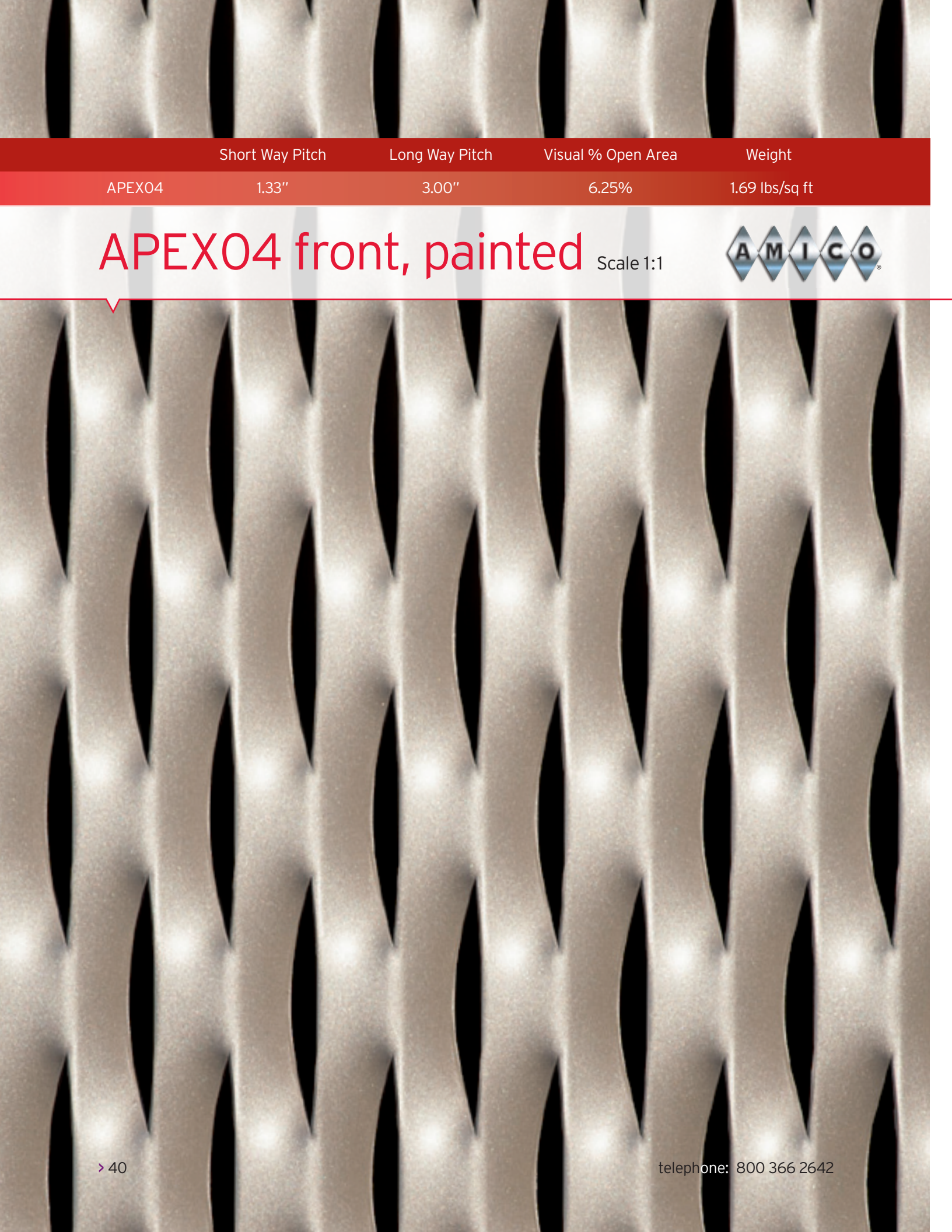
Scale 1:1



APEX03 back, painted

Scale 1:1





	Short Way Pitch	Long Way Pitch	Visual % Open Area	Weight
APEX04	1.33"	3.00"	6.25%	1.69 lbs/sq ft

APEX04 front, painted

Scale 1:1



APEX04 back, painted Scale 1:1





	Short Way Pitch	Long Way Pitch	Visual % Open Area	Weight
Bilbao	1.50"	4.00"	18%	1.48 lbs/sq ft

Bilbao front, painted

Scale 1:1



Bilbao back, painted

Scale 1:1

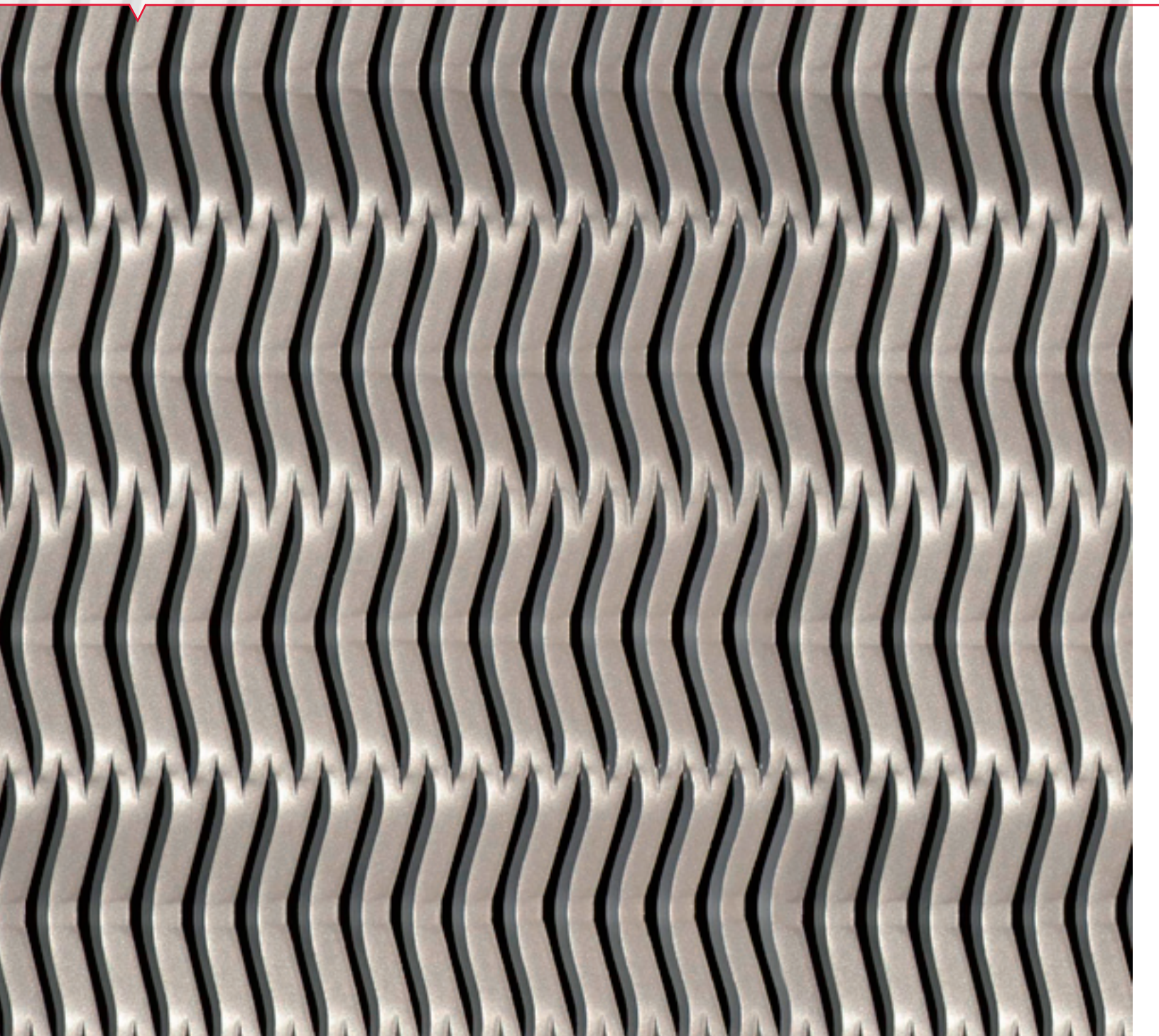




	Short Way Pitch	Long Way Pitch	Visual % Open Area	Weight
Crescent	0.375"	4.00"	25%	1.34 lbs/sq ft

Crescent front, painted

Scale 1:1



Crescent back, painted

Scale 1:1

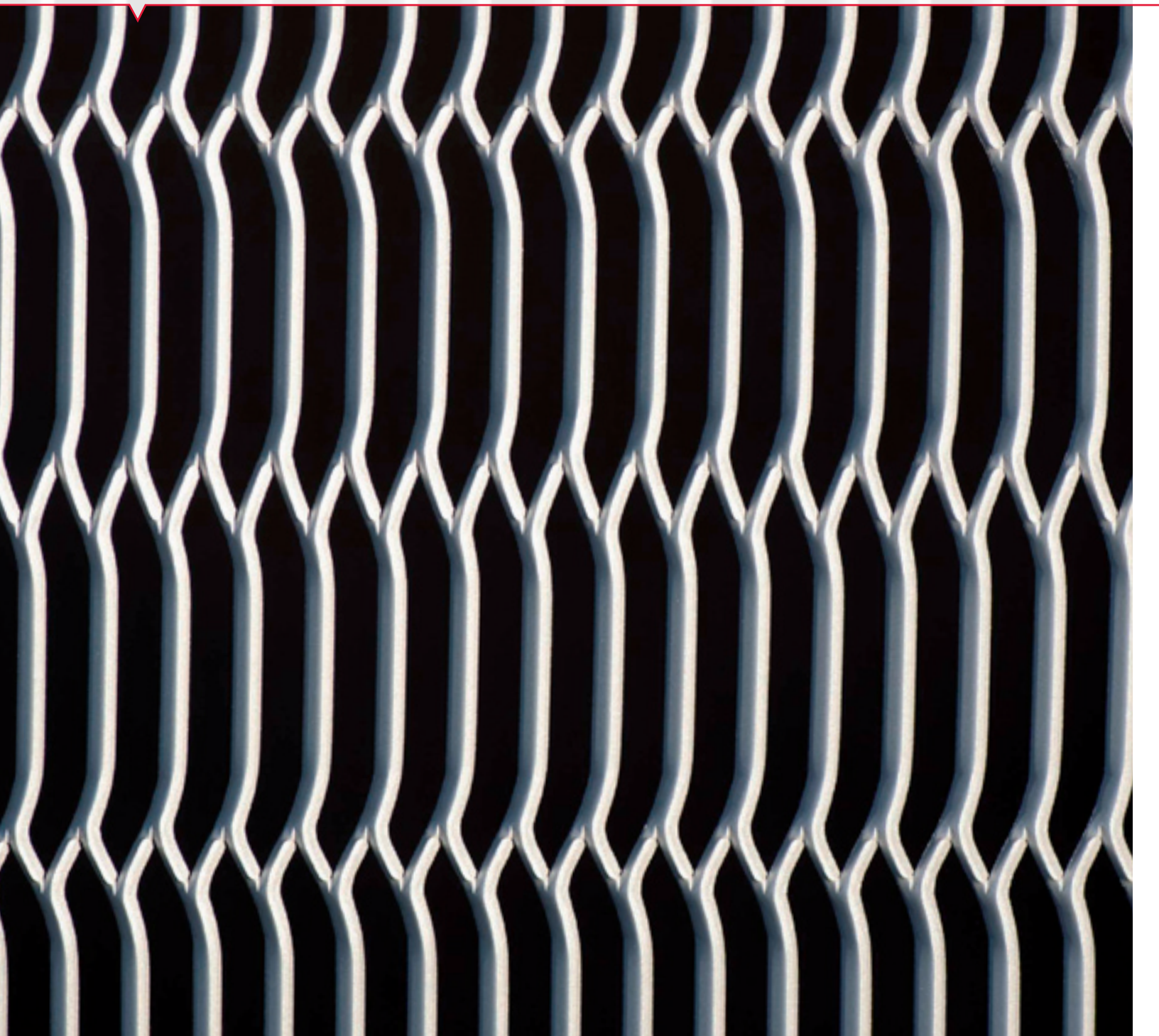




	Short Way Pitch	Long Way Pitch	Visual % Open Area	Weight
Venetian	0.521"	5.33"	55%	0.81 lbs/sq ft

Venetian front, painted

Scale 1:1



Venetian back, painted Scale 1:1

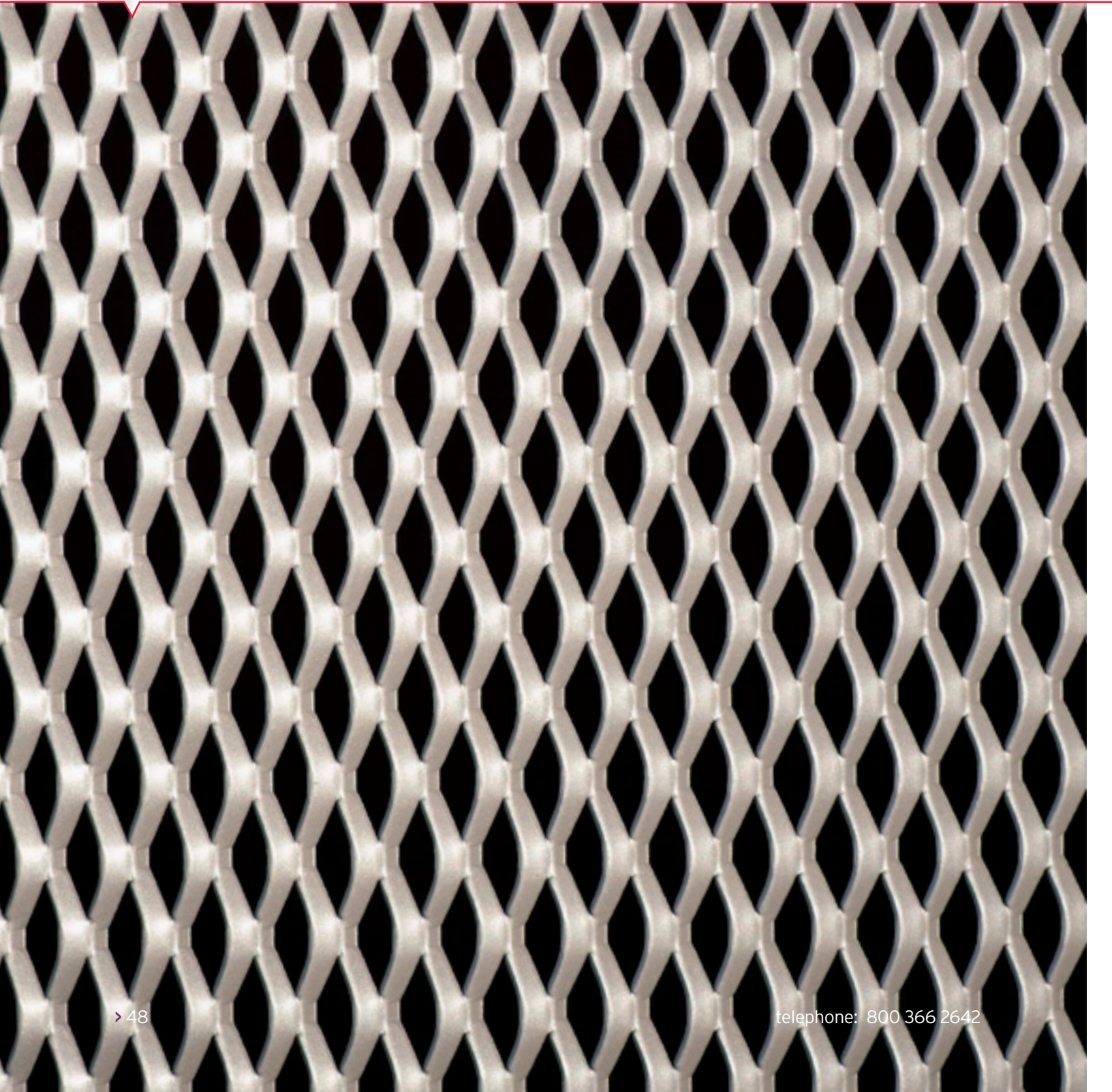




	Short Way Pitch	Long Way Pitch	Visual % Open Area	Weight
Sunshade	0.625"	1.20"	36%	0.74 lbs/sq ft

Sunshade front, painted

Scale 1:1



Sunshade back, painted

Scale 1:1

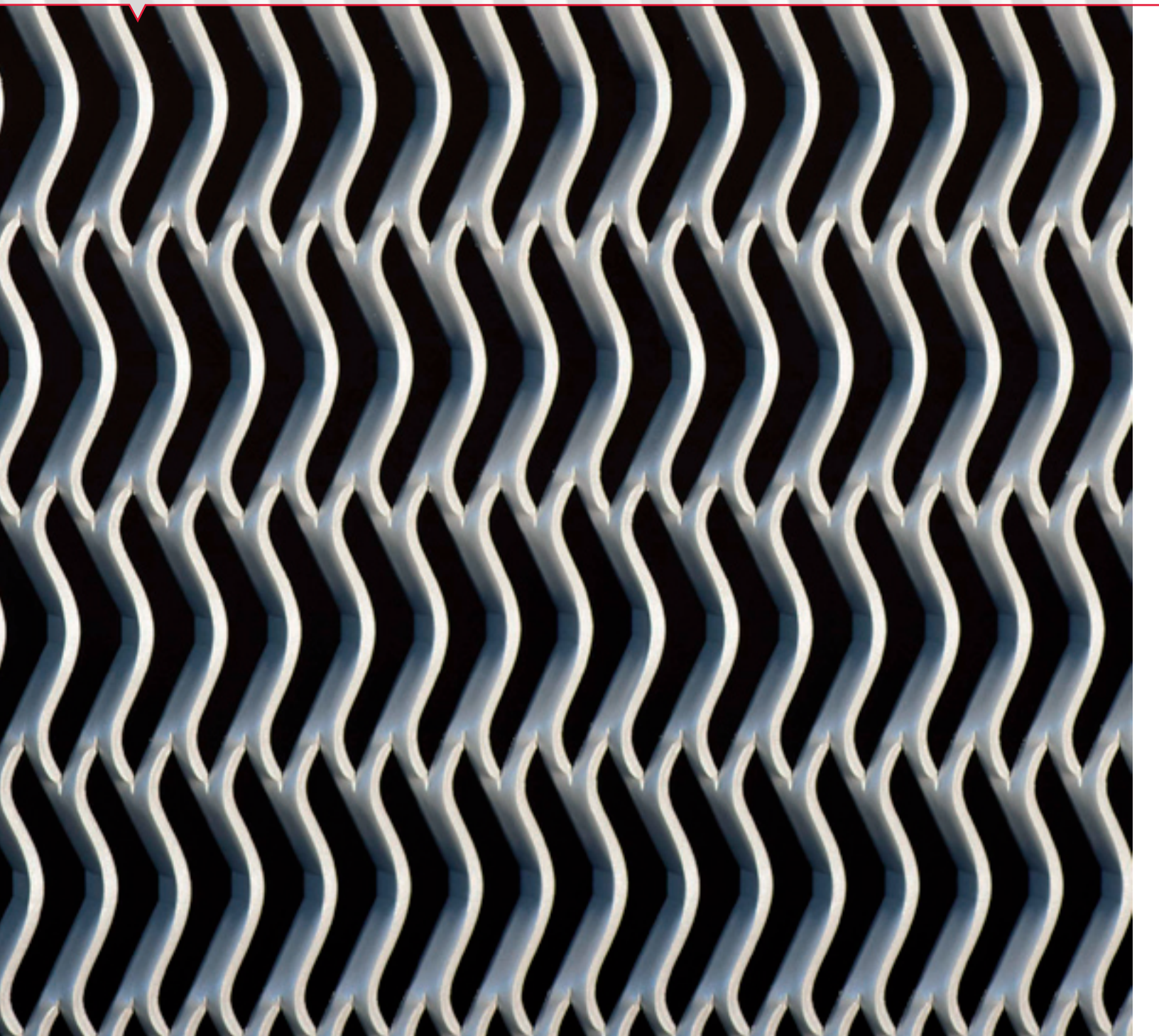




	Short Way Pitch	Long Way Pitch	Visual % Open Area	Weight
Pisa	0.59"	4.00"	52%	0.85 lbs/sq ft

Pisa front, painted

Scale 1:1



Pisa back, painted

Scale 1:1



Expanded Mesh load tables

Icing is NOT considered (wind is allowed to blow through openings)

Clip spacing (inches)	APEX mesh type	Solid %	Allowable deflection (inches)																			
			LWD	SWD	0.05	0.1	0.15	0.2	0.25	0.3	0.35	0.4	0.45	0.5	0.6	0.7	0.8	0.9	1	1.1	1.2	1.3
48	17.5	01A	54%	1	2	3	3	4	5	6	7	8	8	10	12	13	15	17	18	20	22	23
	17.5	02A	54%	5	9	15	19	24	28	33	37	43	47	56	65	75	85	95				
	20	03A	76%	1	2	3	4	5	6	7	8	9	10	12	13	15	17	19	21	23	25	
	Conti.	Bilbao	85%	0	1	1	1	2	2	2	3	3	3	4	5	5	6	7	8	8	9	10
32	17.5	01A	54%	4	8	13	17	21	25	30	34	38	42	47	51							
	17.5	02A	54%	24	48	72	96	119	143	167	191	215										
	20	03A	76%	5	10	15	19	24	29	34	39	44	49	53								
	Conti.	Bilbao	85%	2	3	5	7	9	10	12	14	16	17	19	21							
24	17.5	01A	54%	13	27	40	53	67	80	94												
	17.5	02A	54%	75	151	225	301	376														
	20	03A	76%	15	31	46	61	77	92													
	Conti.	Bilbao	85%	5	11	16	22	27	33	38	44											

WARNING: The information provided in these tables is intended as a guide only. If changes to the fastening position vertically and horizontally differ, engineering calculations and tests are strongly recommended to ensure proper performance of the materials.

Allowable Uniform Net Design Wind Pressure^{1,2} at Allowable Deflection

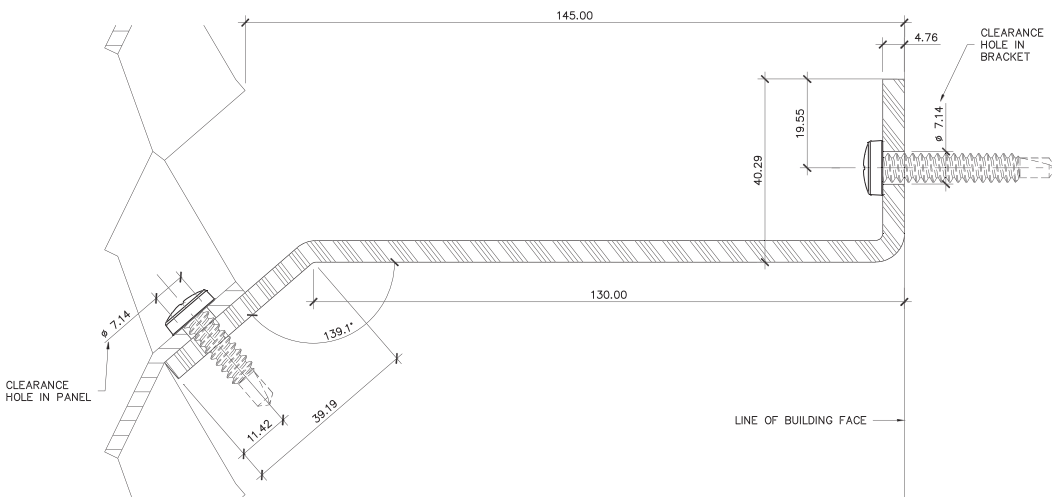
Icing IS considered (wind cannot blow through openings)

Clip spacing (inches)	APEX mesh type	Solid %	Allowable deflection (inches)																			
			LWD	SWD	0.05	0.1	0.15	0.2	0.25	0.3	0.35	0.4	0.45	0.5	0.6	0.7	0.8	0.9	1	1.1	1.2	1.3
48	17.5	O1A	54%	1	1	2	2	2	3	3	4	4	4	5	7	7	8	9	10	11	12	12
	17.5	O2A	54%	3	5	8	10	13	15	18	20	23	25	30	35	41	46	51				
	20	O3A	76%	1	2	2	3	4	5	5	6	7	8	9	10	11	13	14	16	17	19	
	Conti.	Bilbao	85%	0	1	1	1	2	2	2	3	3	3	4	5	5	6	7	7	8	9	9
32	17.5	O1A	54%	2	4	7	9	11	14	16	18	21	23	26	28	0						
	17.5	O2A	54%	13	26	39	52	64	77	90	104	117										
	20	O3A	76%	4	8	11	14	18	22	26	30	33	37	40								
	Conti.	Bilbao	85%	2	3	4	6	8	8	10	12	14	14	16	18							
24	17.5	O1A	54%	7	15	22	29	36	43	51												
	17.5	O2A	54%	41	82	122	164	204														
	20	O3A	76%	11	24	35	46	59	70													
	Conti.	Bilbao	85%	4	9	14	19	23	28	32	37											

NOTES

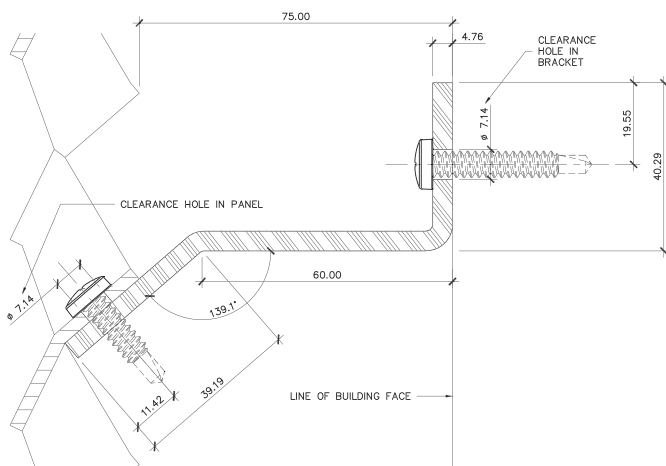
1. The strength of the clips is not reflected in these tables.
2. The design wind pressure values can be obtained from IBC 2003 Table 1609.6.2.1.
The allowable values given in this table are obtained from test results.

Fasteners

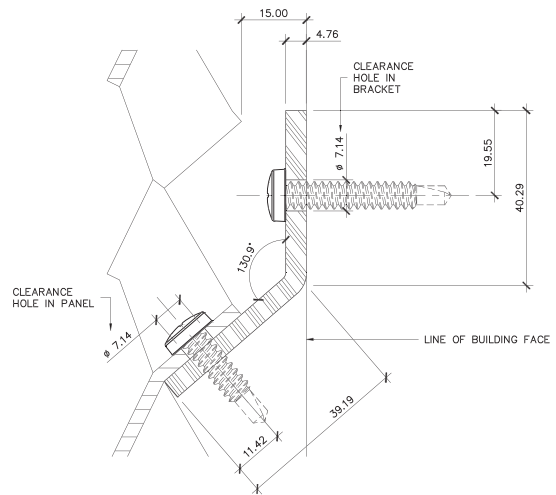


Long Bracket

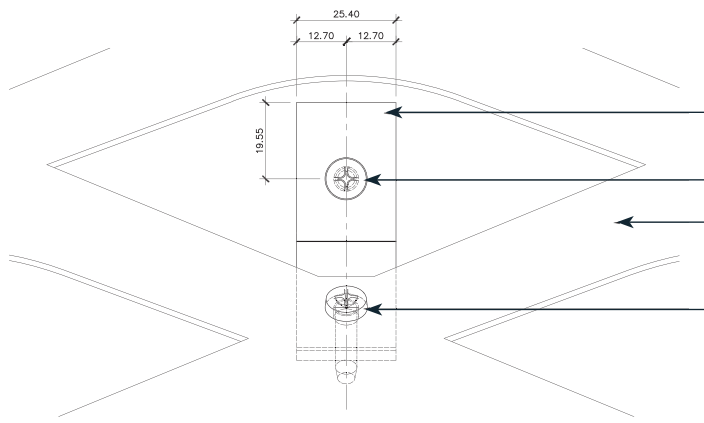
AMICO's line of mesh fastening clips are engineered to make the installation of our Expanded Meshes secure and simple, while not impeding the aesthetics of the mesh. Shown here are 3 basic designs which allow for varying separations from the supporting structure.



Medium Bracket

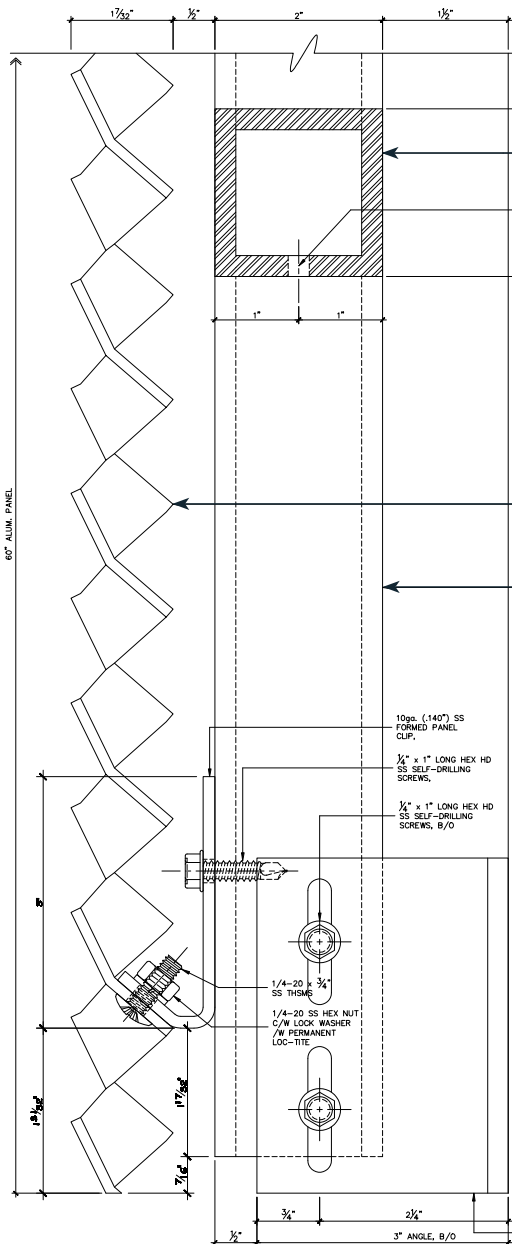


Short Bracket



Elevation Detail

- Stainless Steel (304) formed bracket with mill finish
- Stainless steel pan head socket drive self drilling screw
- APEX01 expanded aluminum mesh panel
- Stainless steel pan head socket drive self drilling screw



Panel Side Section Detail

- Aluminum tube frame (horizontal cross-member)
- APEX03 expanded aluminum mesh panel
- Aluminum tube frame

When our basic clip designs may not fit with your project, AMICO's sales and engineering teams can assist in the design and development of custom fastening solutions. Shop drawings and installation drawings are further value-added services AMICO brings to the table.

PEAK Perforated Metal

AMICO manufactures a wide range of perforated metal products across North America. Our state-of-the-art CNC presses allow us to produce highly customized perforated parts, which are used in a myriad of applications.





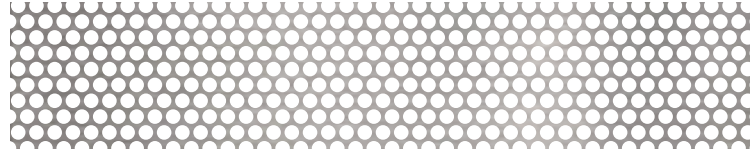
Bayview Hill Gardens, San Francisco
.125" Aluminum panels
with .75" and 3.0" round holes
david baker architects

Perforated Metal

Item#	Material	Gauge	Sheet Size
3636	S/S T304-2B	26	36x120
3638	S/S T304-2B	22	36x120
3249	S/S T304-2B	20	48x120

1/16" Diameter 3/32"

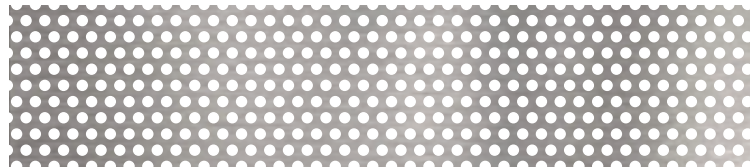
Staggered Centers
128 Holes PSI | 44% Open Area



Item#	Material	Gauge	Sheet Size
3822	ALU 5032-H32	.032	36x120
3825	ALU 5032-H3B	.063	36x120
3826	ALU 5032-H3	.063	48x120
3631	S/S T304-2B	24	36x120
3632	S/S T304-2B	22	36x120
3633	S/S T304-2B	20	36x120
3635	S/S T304-2B	20	48x120
3009	STEEL	24	36x84
3009A	STEEL	24	48x84
3002	STEEL	24	48x96
3011	STEEL	22	36x120
3012	STEEL	20	36x120
3110	STEEL	20	48x120
3111	STEEL	18	48x120
3112	STEEL	16	48x120

1/16" Diameter 1/8"

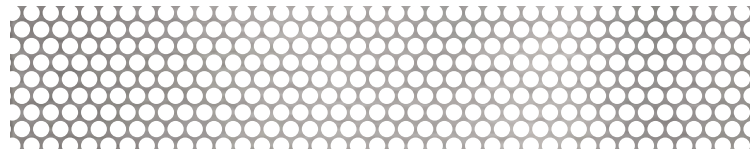
Staggered Centers
74 Holes PSI | 25% Open Area



Item#	Material	Gauge	Sheet Size
3027	STEEL	20	36x120

.075" Diameter .100"

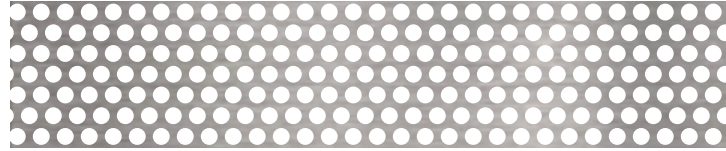
Staggered Centers
116 Holes PSI | 51% Open Area



Item#	Material	Gauge	Sheet Size
3312	ALU 5052-H32	.063	48x120
3662A	S/S T304-2B	20	48x120
3022	STEEL	20	36x120
3120	STEEL	20	36x120
3121	STEEL	18	48x120
3122	STEEL	16	48x120
3123	STEEL	14	48x120

5/64" Diameter 1/8"

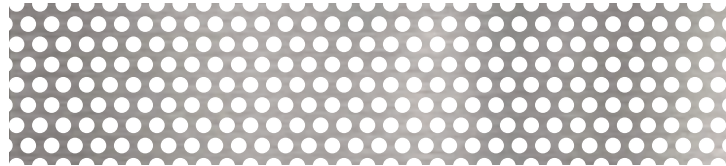
Staggered Centers
74 Holes PSI | 35% Open Area



Item#	Material	Gauge	Sheet Size
3832	ALU 5052-H32	.032	36x120
3833	ALU 5052-H32	.040	36x120
3835	ALU 5052-H32	.063	36x120
3641	S/S T304-2B	24	36x120
3643	S/S T304-2B	22	36x120
3645	S/S T304-2B	20	36x120
3647	S/S T304-2B	18	36x120
3648	S/S T304-2B	16	36x120
3649	S/S T304-2B	16	48x120
3131	STEEL	20	48x120
3132	STEEL	18	48x120
3034	STEEL	16	36x120
3133	STEEL	16	48x120

3/32" Diameter 5/32"

Staggered Centers
47 Holes PSI | 33% Open Area



Item#	Material	Gauge	Sheet Size
3819	GAL G90	22	48x120
3004	STEEL	24	36x84
3006	STEEL	24	48x84
3001	STEEL	24	48x96

3/32" Diameter 3/16"

Staggered Centers
33 Holes PSI | 23% Open Area



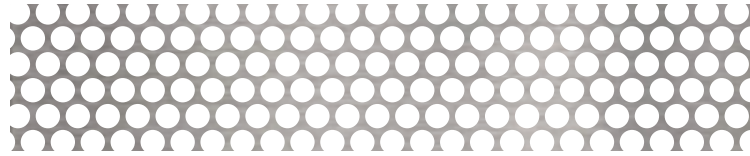
AMICO now offers degreased stock perforated stainless steel out of select warehouses at no additional charge. Please contact your sales representative for details.

Perforated Metal

Item#	Material	Gauge	Sheet Size
3036	STEEL	18	48x120

.117" Diameter 5/32"

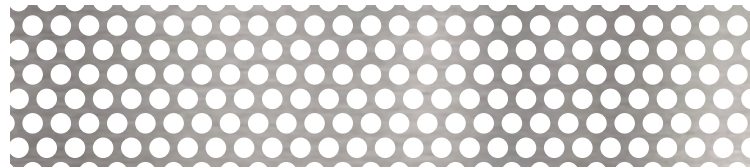
Staggered Centers
47 Holes PSI | 51% Open Area



Item#	Material	Gauge	Sheet Size
3842	ALU 5052-H32	.032	36x120
3843	ALU 5052-H32	.040	36x120
3303	ALU 5052-H32	.040	48x120
3844	ALU 5052-H32	.050	36x120
3864	ALU 5052-H32	.050	48x120
3845	ALU 5052-H32	.063	36x120
3315	ALU 5052-H32	.063	48x120
3821A	ALU 5052-H32	.125	48x120
3147	GAL G90	20	48x120
3653	S/S T304-2B	22	36x120
3654	S/S T304-2B	22	48x120
3655	S/S T304-2B	20	36x120
3652	S/S T304-2B	20	48x120
3656A	S/S T304-2B	18	36x120
3656	S/S T304-2B	18	48x120
3657	S/S T304-2B	16	36x120
3658	S/S T304-2B	16	48x120
3654A	S/S T304-2B	14	48x120
3682	S/S T304-2B	11	48x120
3640	S/S T316L	16	48x120

1/8" Diameter 3/16"

Staggered Centers
33 Holes PSI | 41% Open Area

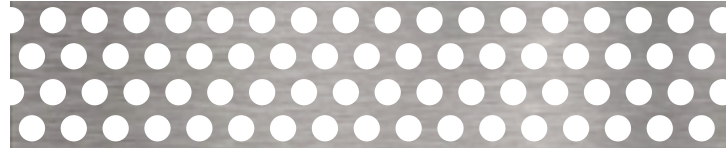


3039	STEEL	24	36x120
3047	STEEL	22	48x120
3041	STEEL	20	36x120
3141	STEEL	20	48x120
3042	STEEL	18	36x120
3142	STEEL	18	48x120
3043	STEEL	16	36x120
3143	STEEL	16	48x120
3144	STEEL	14	48x120
3146	STEEL	11	48x120

Item#	Material	Gauge	Sheet Size
3145	STEEL	12	48x120

1/8" Diameter 7/32"

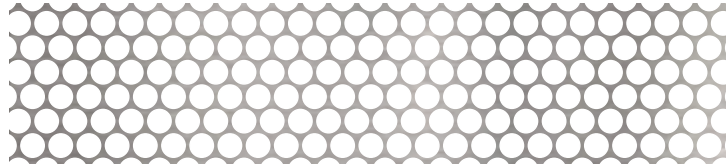
Staggered Centers
24 Holes PSI | 31% Open Area



Item#	Material	Gauge	Sheet Size
3849	ALU 5052-H32	.050	36x120
3148	ALU 5052-H32	.063	48x120
3606	S/S T304-2B	20	48x120
3660	S/S T304-2B	18	36x120
3608	S/S T304-2B	18	48x120
3628	S/S T304-2B	16	48x120
3050	STEEL	22	36x120
3051	STEEL	20	36x120
3151	STEEL	20	48x120
3052	STEEL	18	36x120
3151A	STEEL	18	48x120
3057	STEEL	16	36x120
3152	STEEL	16	48x120

5/32" Diameter 3/16"

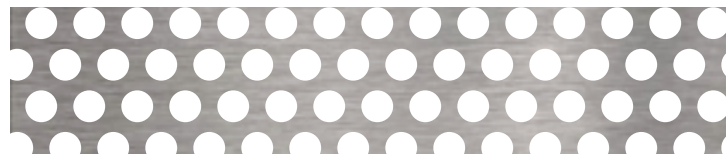
Staggered Centers
33 Holes PSI | 63% Open Area



Item#	Material	Gauge	Sheet Size
3153	STEEL	10	48x120

5/32" Diameter 1/4"

Staggered Centers
19 Holes PSI | 36% Open Area



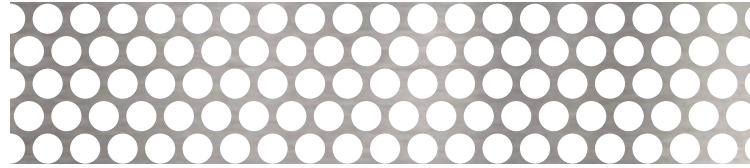
AMICO now offers degreased stock perforated stainless steel out of select warehouses at no additional charge. Please contact your sales representative for details.

Perforated Metal

Item#	Material	Gauge	Sheet Size
3851	ALU 5052-H32	.032	36x120
3301	ALU 5052-H32	.040	48x120
3854	ALU 5052-H32	.063	36x120
3314	ALU 5052-H32	.063	48x120
3415	GAL G90	18	48x120
3630A	S/S T304-2B	22	48x120
3664	S/S T304-2B	20	36x120
3669	S/S T304-2B	20	48x120
3666	S/S T304-2B	18	36x120
3665	S/S T304-2B	18	48x120
3667	S/S T304-2B	16	36x120
3668	S/S T304-2B	16	48x120
3634	S/S T304-2B	14	48x120
3642	S/S T316L	16	48x120
3087	STEEL	24	25x25
3060	STEEL	22	36x120
3077	STEEL	22	48x120
3161	STEEL	20	48x120
3062	STEEL	18	36x120
3162	STEEL	18	48x120
3063	STEEL	16	36x120
3163	STEEL	16	48x120
3164	STEEL	14	48x120
3165	STEEL	12	48x120

3/16" Diameter 1/4"

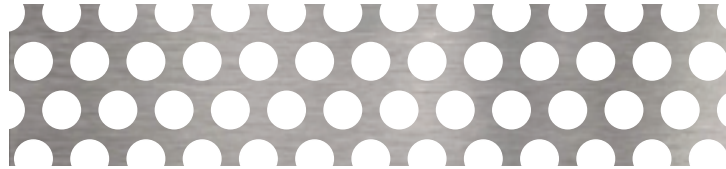
Staggered Centers
19 Holes PSI | 53% Open Area



Item#	Material	Gauge	Sheet Size
3814	ALU 5052-H32	.032	36x120
3345	ALU 5052-H32	.050	48x120
3305	ALU 5052-H32	.063	48x120
3859	ALU 5052-H32	.125	48x120
3671	S/S T304-2B	20	36x120
3672	S/S T304-2B	20	48x120
3683	S/S T304-2B	18	48x120
3673	S/S T304-2B	16	36x120
3674	S/S T304-2B	16	48x120
3679	S/S T304-2B	14	48x120
3688	S/S T304-2B	11	48x120
3644	S/S T316L	16	48x120
3171	STEEL	20	48x120
3124	STEEL	18	48x120
3173	STEEL	16	48x120
3175	STEEL	14	48x120
3053	STEEL	12	48x120
3019	STEEL	11	48x120
3176	STEEL	10	48x120
3178	STEEL	1/4	48x120

1/4" Diameter 3/8"

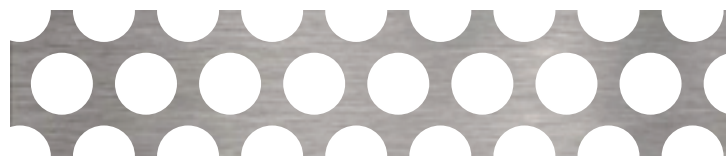
Staggered Centers
8 Holes PSI | 40% Open Area



Item#	Material	Gauge	Sheet Size
3283	STEEL	16	48x120
3049	STEEL	10	48x120
3183	STEEL	1/4	48x120

5/16" Diameter 7/16"

Staggered Centers
6 Holes PSI | 46% Open Area



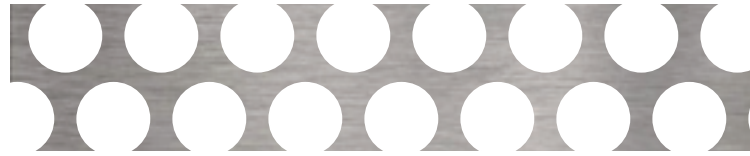
AMICO now offers degreased stock perforated stainless steel out of select warehouses at no additional charge. Please contact your sales representative for details.

Perforated Metal

Item#	Material	Gauge	Sheet Size
3014	STEEL	16	48x120

3/8" Diameter 1/2"

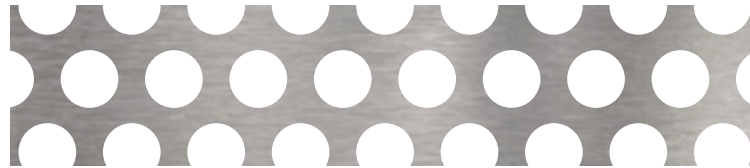
Staggered Centers
5 Holes PSI | 51% Open Area



Item#	Material	Gauge	Sheet Size
3867	ALU 5052-H32	.063	48x120
3866	ALU 5052-H32	.125	48x120
3625	S/S T304-2B	16	48x120
3289	S/S T304-2B	14	48x120
3191	STEEL	20	48x120
3192	STEEL	16	48x120
3185	STEEL	14	48x120
3196	STEEL	12	48x120
3084	STEEL	11	48x120
3193	STEEL	10	48x120
3194	STEEL	3/16	48x120
3195	STEEL	1/4	48x120

3/8" Diameter 9/16"

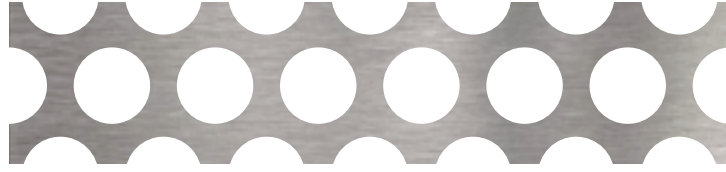
Staggered Centers
3.6 Holes PSI | 40% Open Area



Item#	Material	Gauge	Sheet Size
3836	ALU 5052-H32	.063	48x120
3306	ALU 5052-H32	.125	48x120
3677	S/S T304-2B	20	36x120
3678	S/S T304-2B	16	36x120
3275	S/S T304-2B	16	48x120
3689	S/S T304-2B	11	48x120
3201	STEEL	20	48x120
3202	STEEL	16	48x120
3239	STEEL	14	48x120
3196A	STEEL	11	48x120
3204	STEEL	10	48x120
3205	STEEL	3/16	48x120
3206	STEEL	1/4	48x120

1/2" Diameter 11/16"

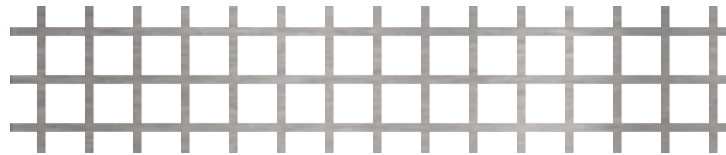
Staggered Centers
2.4 Holes PSI | 48% Open Area



Item#	Material	Gauge	Sheet Size
3751	ALU 5052-H32	.032	36x120
3701	STEEL	22	36x120
3702	STEEL	20	36x120

.200" Square 1/4"

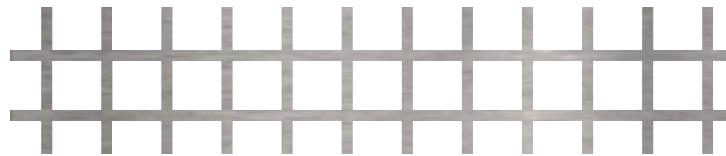
Straight Centers
20 Holes PSI | 64% Open Area



Item#	Material	Gauge	Sheet Size
3704A	STEEL	20	36x120

.250" Square 5/16"

Straight Centers
13 Holes PSI | 64% Open Area



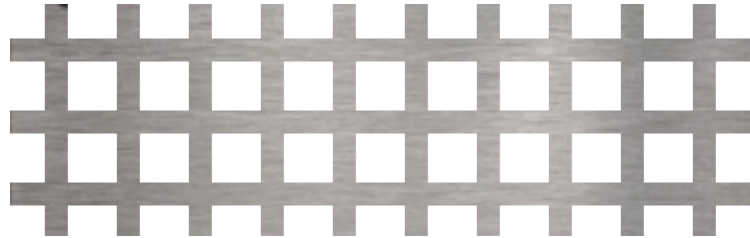
AMICO now offers degreased stock perforated stainless steel out of select warehouses at no additional charge. Please contact your sales representative for details.

Perforated Metal

Item#	Material	Gauge	Sheet Size
3246	STEEL	16	48x120

.250" Square 3/8"

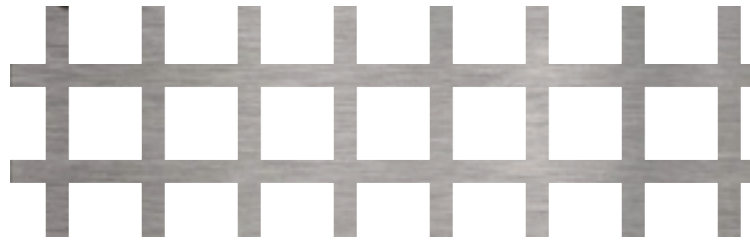
Straight Centers
9 Holes PSI | 44% Open Area



Item#	Material	Gauge	Sheet Size
3725	STEEL	16	48x120

.375" Square 1/2"

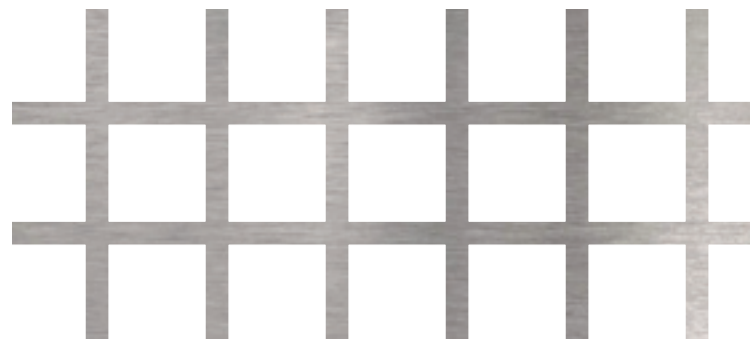
Straight Centers
5 Holes PSI | 56% Open Area



Item#	Material	Gauge	Sheet Size
3709	STEEL	16	48x120

.500" Square 5/8"

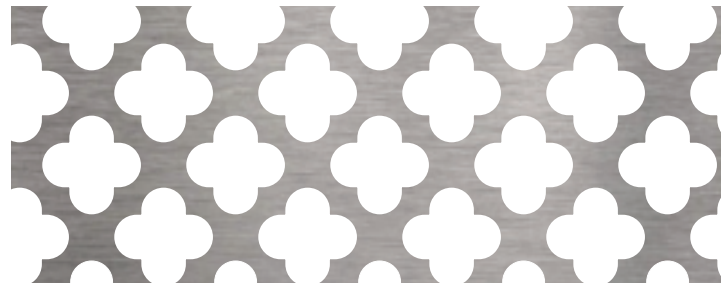
Straight Centers
3.3 Holes PSI | 64% Open Area



Item#	Material	Gauge	Sheet Size
3505	STEEL	22	36x120

R-28 Cloverleaf

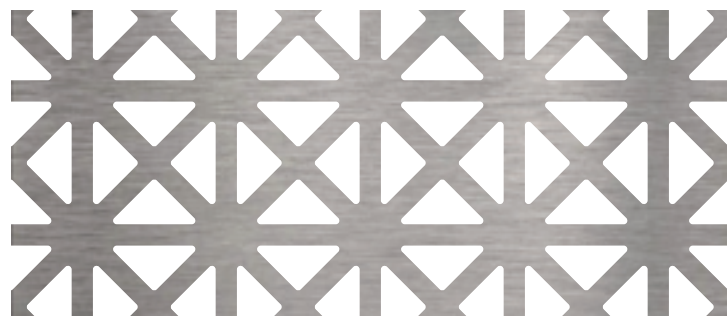
50% Open Area



Item#	Material	Gauge	Sheet Size
3552	ALU 5052-H32	.032	36x120
3502	STEEL	22	36x120

R-20 Grecian

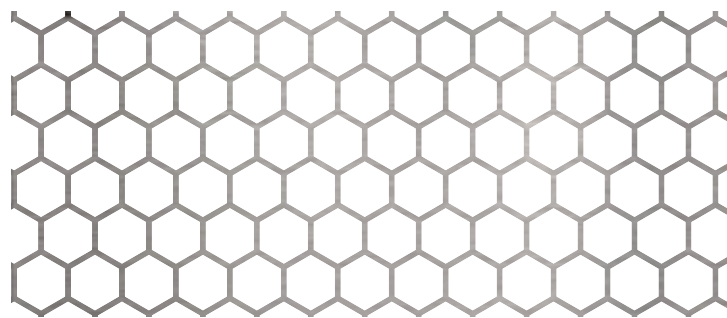
35% Open Area



Item#	Material	Gauge	Sheet Size
3557	ALU 5052-H32	.032	36x120
3507	STEEL	22	36x120

R-40 Hexagon 1/4"

79% Open Area

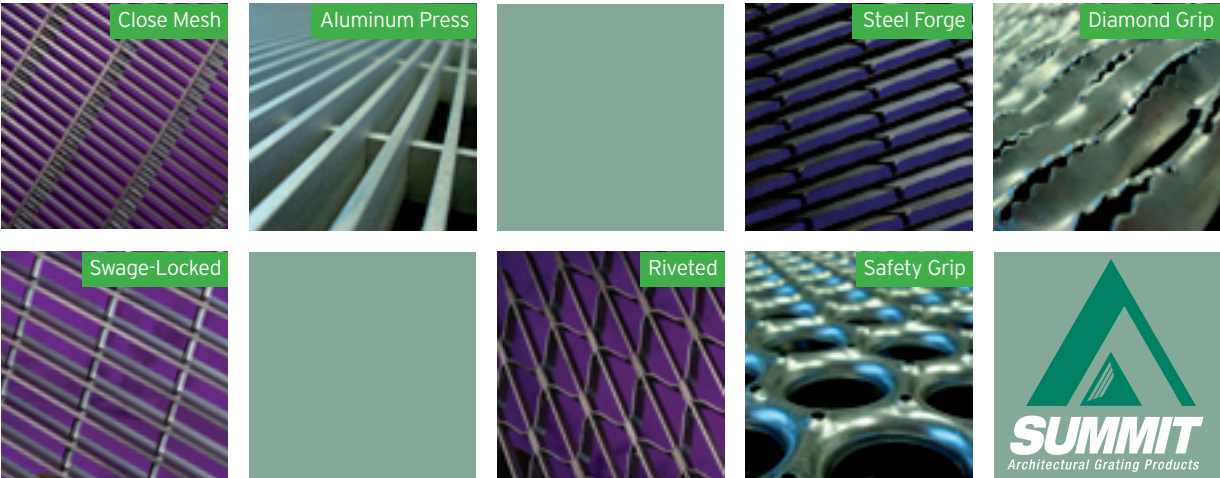


AMICO now offers degreased stock perforated stainless steel out of select warehouses at no additional charge. Please contact your sales representative for details.

SUMMIT Grating Range

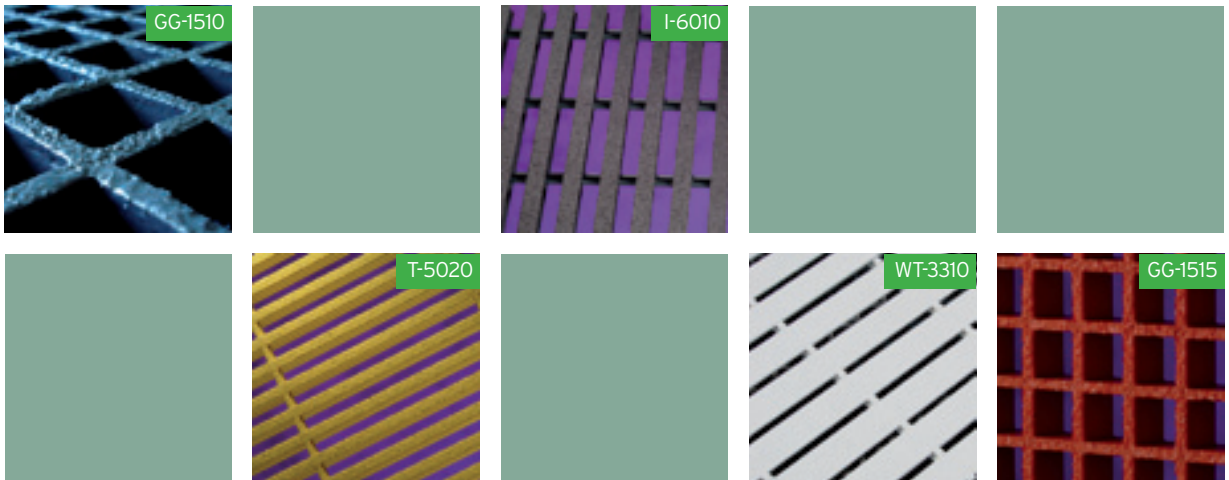


Gratings are typically found underfoot, but AMICO gratings have helped designers bring beauty and stability to applications such as sunshades, canopy covers, facades, entrance mats and roof top mechanical screening.



	Center to Center Dimensions (mm)	Weight per sq. foot
Close Mesh	7/16" x 4"	Various
Aluminum Press-Locked	Various	Various
Steel Forge	Various	Various
Diamond Grip	Various	Various
Swage-Locked	Various	Various
Riveted	Various	Various
Safety Grip	Various	Various

This chart represents only a small sample of available patterns. Please visit www.amico-fabricatedproducts.com for additional options.



	Center to Center Dimensions (mm)	Overall Thickness (mm)	Weight per sq. foot
GG-1510	1.50" x 1.50"	1.00"	3.03 lbs
I-6010	1.50" x 4.00"	1.00"	2.35 lbs
T-5020	2.00" x 6.00"	2.00"	3.1 lbs
WT-3310	1.63" x 6.00"	1.00"	2.0 lbs
GG-1515	1.50" x 1.50"	1.50"	4.13 lbs

This chart represents only a small sample of available patterns. Please visit www.amico-fabricatedproducts.com for additional options.

AMICO Worldwide Manufacturing & Distribution Centers:

United States:	Lakeland, FL	Burlington, Canada
Birmingham, AL	Orem, UT	Edmonton, Canada
Charlotte, NC	Rochester, NY	Montreal, Canada
Chicago, IL	Seattle, WA	Vancouver, Canada
Dayton, TX	Visalia, CA	Hartlepool, England
Denver, CO	Wilmington, DE	Hannover, Germany
Fontana, CA		
Houston, TX		
Lafayette, LA		

Visit www.amicoarch.com to view or download data sheets, request a catalog, request LEED information or get in touch with one of our on-staff LEED Green Associates for technical assistance.



AMICO reserves the right to improve or otherwise change a product design without notice. This catalog is effective 04.01.14 and supersedes all previous information and publications.

5/2014 - 2,500



Alabama Metal Industries Corporation
3245 Fayette Avenue | Birmingham, AL 35208
Toll Free: 800 366 2642
www.amicoarch.com



The Expanded Metal Company Limited
Tel: +44 (0) 1429 867 388
www.exmesh.co.uk



Sorst Streckmetall GmbH
Tel: +49 (5 11) 67 67 56-0
www.sorst.de

GIBRALTAR INDUSTRIES COMPANIES 