



2026-2027

AMIGUARD[®] APEX FENCING



AMICO
PERIMETER SECURITY

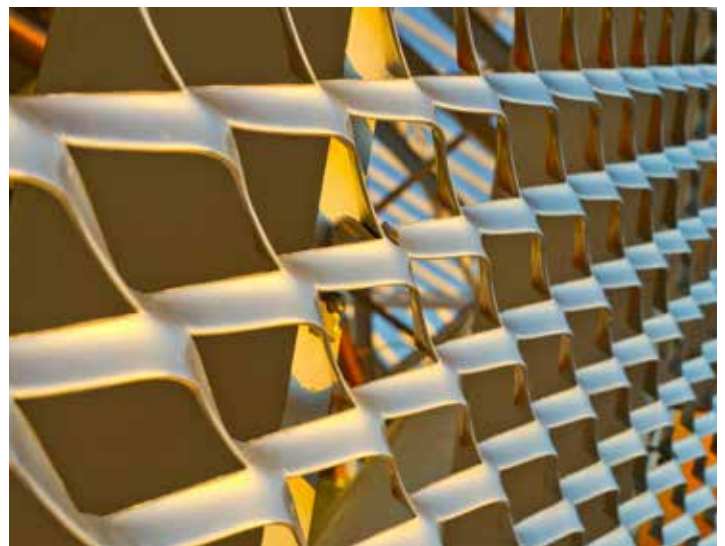
AMICOSECURITY.COM

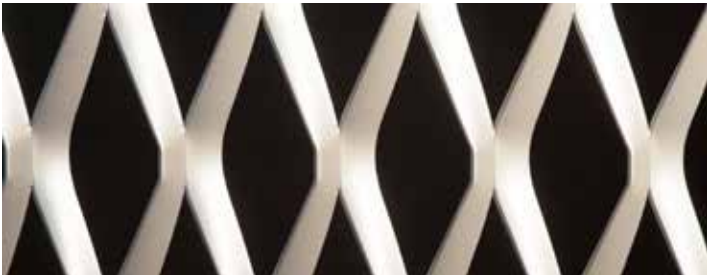
855.552.6426

AMIGUARD® APEX FENCING



AMICO Security has created APEX, a new line of high-quality Architectural Expanded Products. The APEX line offers a unique combination of opacity, translucency, texture and structural integrity. The ability to design unique mesh patterns in combination with engineered fastening systems allows AMICO to partner with you on a project from design development through installation.





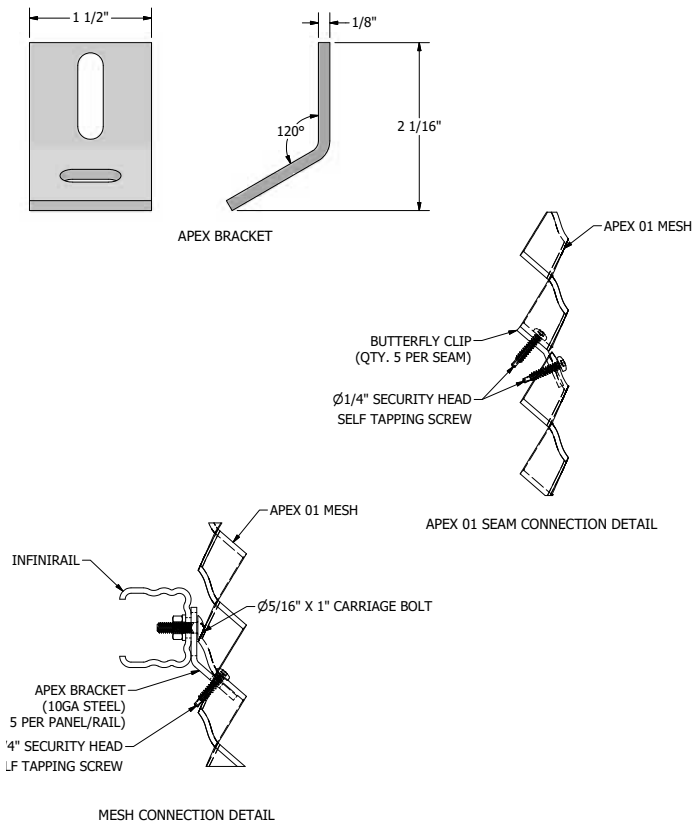
APEX 01 MESH

APEX 01	Short Way Diamond	Long Way Diamond	Visual % Open Area	Weight
Steel	3.50"	8.00"	46%	2.24 lbs/sq ft

APEX 03 MESH

APEX 03	Short Way Diamond	Long Way Diamond	Visual % Open Area	Weight
Steel	2.50"	6.00"	26%	3.13 lbs/sq ft

APEX01 STANDARD DIAMOND ORIENTATION (SDO) MOUNTING BRACKETS SHOWN AS EXAMPLE



MATERIALS

Most malleable materials can be expanded, perforated and produced into mesh. Steel, Stainless steel and aluminum are the most common. Other metals such as brass, copper, gold, platinum and titanium can also be used. Each of these materials has its own “special” characteristics: aluminum gives lightweight longevity, steel brings strength, and copper ages beautifully, maturing to stunning verdigris.



FINISHES

AMICO Security offers three highly corrosion resistant finishing options

- Hot-Dip Galvanizing
- AMICOAT™ Powder coating over E-Coating or primer
- AMICOAT™ Duplex Coating, Powder coating over Hot-Dip Galvanizing

These finishes help protect and add color to our base materials creating stunning visual effects.

For more information
or to place an order:

info@amicosecurity.com
855.552.6426

amicosecurity.com
[linkedin.com/company/amicosecurity](https://www.linkedin.com/company/amicosecurity)

AMICO Security
3245 Fayette Avenue
Birmingham, AL 35208



Scan/click for full
Product Catalog



AMICO
PERIMETER SECURITY

