



A GIBRALTAR INDUSTRIES COMPANY 

# Metal Lath for Stucco & Plaster



TRANSFORMING MATERIALS

*into products that make a better world*

# TABLE OF CONTENTS

Diamond Mesh Lath.....	Page 1	Metal Accessories.....	Page 7
Flat Lath (Galvanized and Stainless Steel)		N-66 Narrow Wing Casing Bead	
Self-Furred Lath — Dimpled		J-Metal Bead	
Self-Furred Lath — V-Grooved		Foundation Weep Screed (FHA #7)	
Tilath™ Paper Backed Metal Lath.....	Page 2	Metal Accessories.....	Page 8
Flat and Self-Furred Tilath™		Control Joint (VV or M-Type, #15 Joint)	
Tilath™ Starter Strips		Griplock J Control Joint (#XJ15 Joint)	
Tilath™ Pony Rolls			
Rib Lath.....	Page 3	Metal Accessories.....	Page 9
3/8" High Rib Lath		Zinc Control Joint	
Support Spacing for Metal Lath.....	Page 3	Inside Corner Control Joint (#30 Joint)	
Spray Lath Products.....	Page 4	2-Piece Expansion Joint (#40 Joint)	
Spray Rib Lath — High (3/8") Rib		Installation Key Points .....	Page 10
Managing Quality Control.....	Page 4	Installation Detail Photos .....	Page 11
AMICO greenscreen .....	Page 4	Specialty Metal Products .....	Page 12
Metal Accessories.....	Page 5	Wire Corners	
X-1 Corner Bead		Galvanized Hanger Wire	
X-2 Reinforced Corner Bead		Type 304 Stainless Steel Lath	
Cornalath		and Accessories.....	Page 13
Striplath		Manufacturing &	
		Distribution Centers .....	Back Cover
Metal Accessories.....	Page 6		
CI Weep Trac™			
X-66 Expanded Flange Casing Bead			

QUALITY PRODUCTS – AROUND THE GLOBE



A GIBALTAR INDUSTRIES COMPANY 

ALABAMA METAL INDUSTRIES CORPORATION

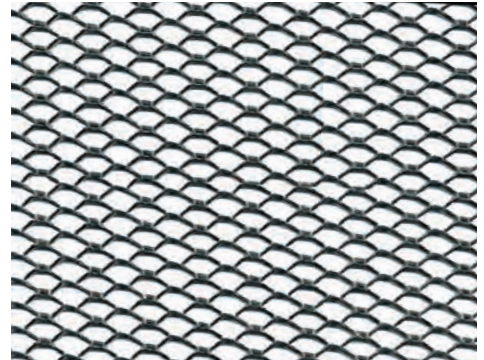
800.487.2511 • amicoglobal.com



# DIAMOND MESH LATH

**Flat Lath** is manufactured from prime quality steel sheets that are slit and expanded to form small diamond shaped openings. This large number of openings provides more plaster keys, providing better scratch coat bonding in either pumped or troweled applications. Each sheet has square ends and smooth parallel edges on sides for fast, easy handling and bending for curved surfaces. G60 galvanized finish to ASTM A653 and ASTM C847.

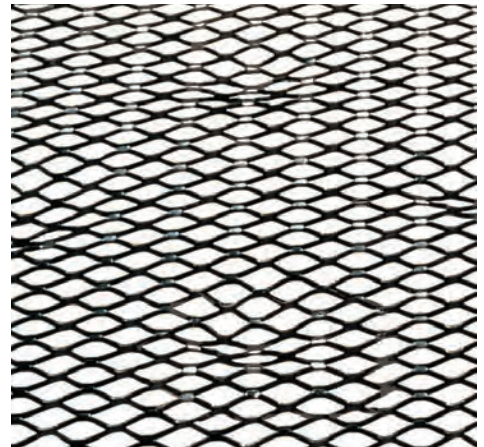
Weight/ sq. yard	Finish	Sheet weight	Nominal sheet size	Sheets/ bundle	Bundles/ pallet	Pallet weight
2.5 lbs.	Galvanized	5.0 lbs.	27" x 97"	10	50	2500 lbs.
3.4 lbs.	Galvanized	6.8 lbs.	27" x 97"	10	50	3400 lbs.
2.5 lbs.	Stainless	5.0 lbs.	27" x 97"	10	10	1275 lbs.
3.4 lbs.	Stainless	6.8 lbs.	27" x 97"	10	10	1700 lbs.



**Self-Furred Lath** is used extensively in exterior stucco and stone work over sheathing and as a plaster base over masonry walls. Self-furring dimples or embossed "V" grooves hold the lath minimum 1/4" away from solid surfaces to aid in the keying of stucco to the lath. AMICO self-furred lath does not require additional self-furring mechanisms to function as required by ASTM C1063.

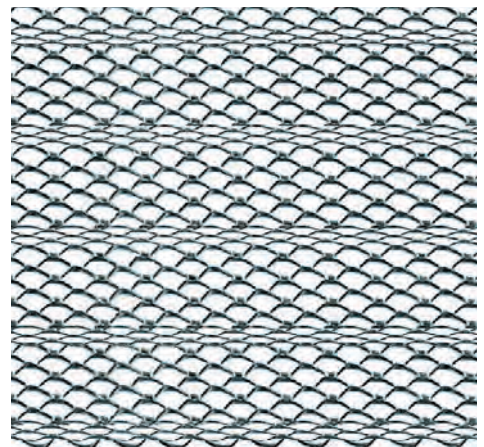
**Dimpled** (dimple spacing 5 1/4" on length with offset rows 5 1/4" apart on width)

Weight/ sq. yard	Finish	Sheet weight	Sheet size	Sheets/ bundle	Bundles/ pallet	Pallet weight
2.5 lbs.	Galvanized	5.0 lbs.	27" x 97"	10	25	1250 lbs.
3.4 lbs.	Galvanized	6.8 lbs.	27" x 97"	10	25	1700 lbs.
2.5 lbs.	Stainless	5.0 lbs.	27" x 97"	10	10	1250 lbs.
3.4 lbs.	Stainless	6.8 lbs.	27" x 97"	10	10	1700 lbs.



**V-Grooved** (embossed "V" grooves spaced 6" on center lengthwise)

Weight/ sq. yard	Finish	Sheet weight	Sheet size	Sheets/ bundle	Bundles/ pallet	Pallet weight
2.5 lbs.	Galvanized	5.0 lbs.	27" x 97"	10	25	1250 lbs.
3.4 lbs.	Galvanized	6.8 lbs.	27" x 97"	10	25	1700 lbs.



As per current revisions of ASTM C1063, metal lath applied to solid substrates must have 1/4" self-furring properties, built into the lath sheet. Therefore, AMICO recommends the use of self-furred (SF) lath over solid substrates, as required by current codes. Self-furring lath is not required over framing members less than 1 5/8" wide or over open framing.

# TILATH™ PAPER BACKED METAL LATH

**Tilath™** is AMICO lath with our factory-applied, weather-resistive barrier, Grade D, asphalt saturated paper (WRB). Tilath is attached in an “offset” fashion, providing for a ship lap installation, per ASTM C1063 (see the illustrations below). Tilath is an ideal selection for applications requiring two layers of WRB, where the synthetic air barrier provides the first barrier. Furthermore, Tilath is an ideal choice for veneer stone installations when the first WRB is already installed.

## Flat and Self-Furred Tilath™

Weight/ sq. yard *	Finish	Sheet weight*	Sheet size	Sheets/ bundle	Bundles/ pallet	Pallet weight
2.5 lbs.	Galvanized	5.18 lbs.	27" x 97"	10	25	1295 lbs.
3.4 lbs.	Galvanized	6.81 lbs.	27" x 97"	10	25	1745 lbs.

\* “Weight per sq. yard” does NOT include the Grade D WRB; however “sheet weight” DOES include the approximate weight of the paper.

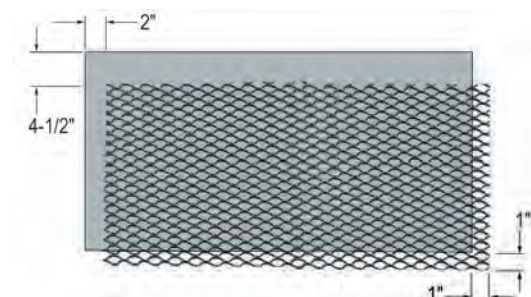
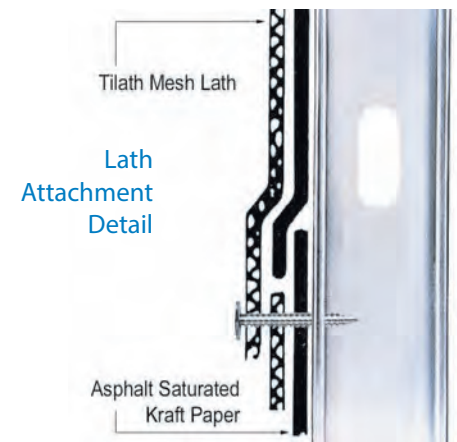
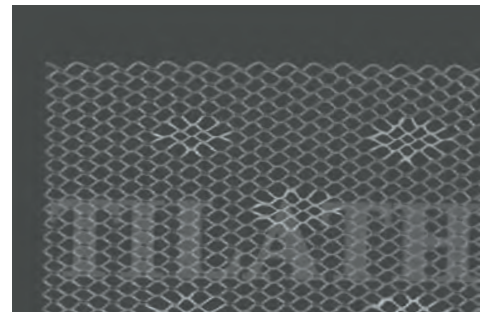
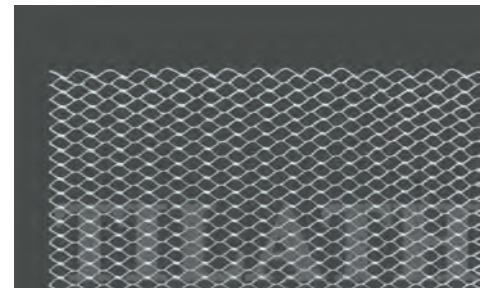
**Tilath™ Starter Strip** is a compatible Grade D asphalt paper to be used over the foundation weep screed when installing offset, paper backed lath. Starter Strip is printed with incremental 1" marks and larger marks at 12" and 16" to assist the installer in fastening to the wall framing. Because of its Water Resistive Barrier (WRB) properties, it also provides protection around doors and windows, behind stucco accessories and anywhere WRB strips are needed.

Roll Size	Rolls / Carton	Carton Weight	Cartons / Pallet
6" x 225'	6	30 lbs.	30

## Tilath™ Pony Rolls Grade D paper

Rating	Roll Width	Roll Coverage	Roll Weight	Rolls / Pallet
20-minute	40"	324 sf	11.6-lbs	144
60-minute	40"	240 sf	14.4-lbs	144

Tilath™ has a WRB factory applied to lath sheets with a double offset, one side and end to allow the lath to overlap at sheet joints. Tilath is to be “shingled” up the wall, beginning with a 6" Tilath Starter Strip (Grade-D paper) at base of wall, placing the Starter Strip over the weep screed attachment flange. Then, the Tilath sheet is attached with metal overhang facing down so that the lap detail can be achieved (as shown at right).



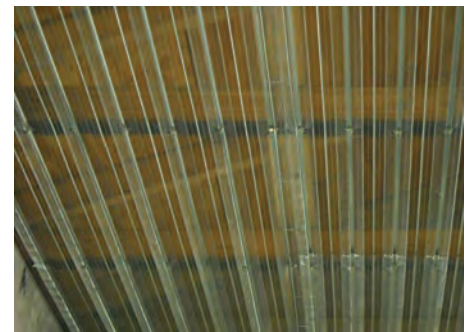
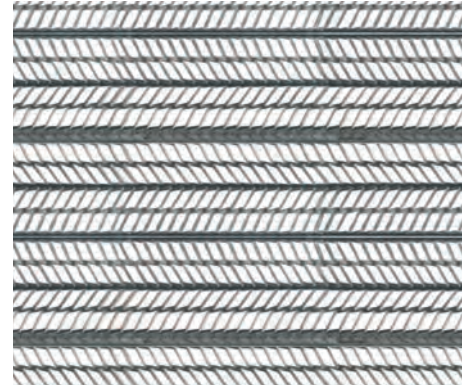


# RIB LATH

**Rib Lath** with its unique solid metal ribs running the length of the lath is used for 3-coat stucco. Rib lath provides greater stiffness and strength to support finishes over a greater span as with ceilings and soffits utilizing joists set at 24-inches on center. See Support Spacing for Metal Lath table below for lath and support spacing.

**3/8" High Rib Lath** is designed with seven longitudinal ribs (each  $\frac{3}{8}$ " high) and eight small flat ribs in between the high ribs. This product is used almost exclusively for ceiling and soffit applications. ASTM C1063 allows framing for High Rib Lath to span up to 24" on center. High Rib Lath is installed with nose of ribs touching framing members.

Weight/ sq. yard	Finish	Sheet weight	Sheet size	Sheets/ bundle	Bundles/ pallet	Pallet weight
3.4 lbs.	Galvanized	6.8 lbs.	27" x 97"	10	50	3400 lbs.



## SUPPORT SPACING FOR METAL LATH

(adapted from ASTM C1063, table 3)

TYPES OF LATH	Nominal Weight per sq. yd <sup>2</sup>	VERTICAL SPACING - in. (Walls)			HORIZONTAL SPACING - in. (Ceilings)	
		Wood Framing	Solid Partitions <sup>1</sup>	Steel Framing	Wood or Concrete	Metal
Diamond Mesh <sup>2</sup>	2.5 lbs.	16	16	16 <sup>3</sup>	12	12
	3.4 lbs.	16	16	16	16	16
3/8" Rib Lath	3.4 lbs.	24	N/A	24	24	24

1 Where plywood is used for sheathing, a minimum of 1/8 in. (3.2 mm) separation shall be provided between adjoining sheets to allow for expansion.

2 Metal plaster bases shall be furred away from vertical supports or solid surfaces at least 1/4 in. Self-furring lath meets furring requirements; furring of expanded metal lath is not required on supports having a bearing surface of 1-5/8 in. or less.

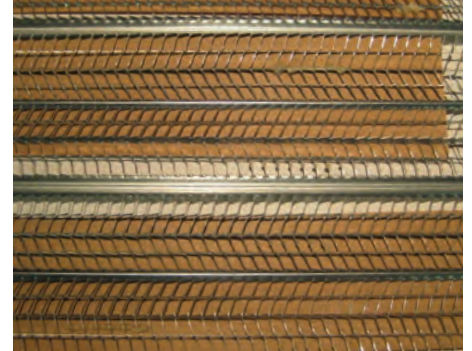
3 These spacings are based on unsheathed walls. Where self-furring lath is placed over sheathing or a solid surface, the permissible spacing of supports shall be no more than 24 in. (610 mm).

# SPRAY LATH PRODUCTS

Spray Lath is a West Coast product, where stucco is spray applied to the surface of the lath to build up the stucco thickness. Kraft paper is factory applied to prevent over spray of stucco. The spaces between the strips of Kraft paper allow for the visual alignment of the sheet for mechanical attachment of the ribs to the substrate. Rib Lath is often attached directly to the vertical framing members without a solid board substrate included.

**Spray Rib Lath - High (3/8") Rib** is a more rigid lath product than Diamond Mesh, and like Spray Lath, has strips of kraft paper attached between the ribs. The additional rigidity is well suited for horizontal applications such as soffits. The 3.4 lb. High Rib allows for (up to) 24" spans.

Weight/ sq. yard	Sheet size	Sheet weight	Sheets/ bundle	Bundles/ pallet	Pallet weight
3.4 (3/8") lbs.	27" x 97"	6.8 lbs.	10	50	3400 lbs.



## MANAGING QUALITY CONTROL

Metal lath may look the same when palletized. Check to see if it is the correct weight as specified. To be assured your lath is complaint, AMICO straps all diamond mesh lath bundles with the color coated identification - Red strapping for 3.4# - Blue for 2.5# - Yellow for 1.75#

**AMICO 3.4# /sy per ASTM C-847, ICC-ESR-2247 Made in USA**

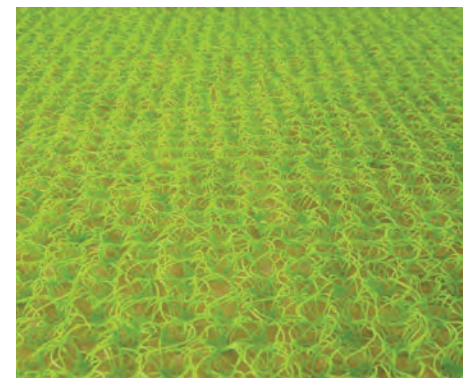
**AMICO 2.5# /sy per ASTM C-847, ICC-ESR-2247 Made in USA**



AMICO greenscreen is a 7-mil exterior rainscreen dimpled designed for use behind traditional stucco, manufactured stone, Continuous Insulation, EIFS, metal panel and fiber cement board applications. AMICO's rainscreen design provides a primary drainage path and ventilation for incidental moisture between the exterior wall finish and weather barrier / sheathing. A polypropylene strand matrix with its unique dimple design has superior compressive strength. This product is designed for residential and commercial applications. Rolls have a selvage on one edge and packed in plastic bags. 8-rolls per pallet.

Roll weight	Roll dimensions	Overall thickness	Roll per pallet	Pallet weight
27 lbs	39" x 100lf	0.28-in / 7-mil	8	216 lbs

- Superior Compressive Strength - maintains drainage and air flow
- Continuous Matrix Strand Design - ensures water flow
- Multi-Directional Features - vapor flow in all directions
- ASTM E84 - meets or exceeds Class A flame spread



# METAL ACCESSORIES

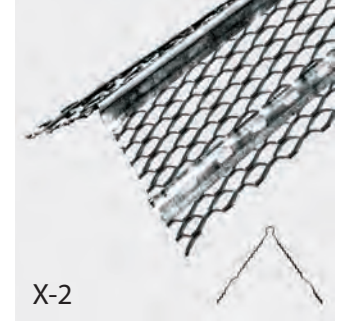
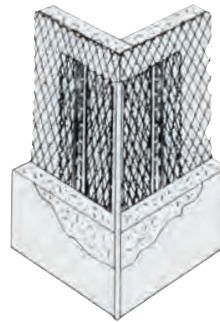
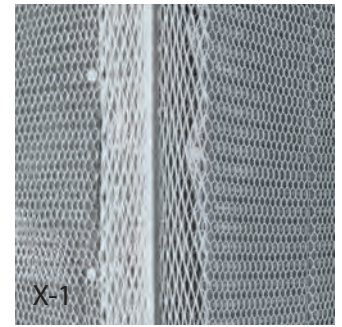
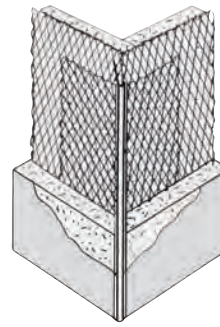
**Corner Beads (X-1 and X-2)** provide exterior corner protection and a straight ground for screeding.

X-1 Corner Bead has a 3" wide flange that is flexible and adaptable to various ground heights.

X-2 Reinforced Corner Bead is superior in strength to X-1, due to added stiffener strips in the 3¼" wide flanges.

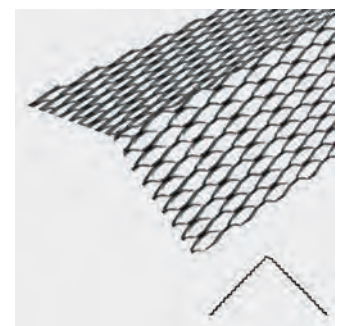
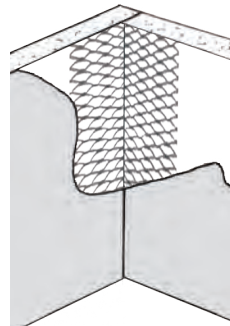
Style	Length	Finish	Pieces/ carton	Weight/ carton	Cartons/ pallet	Pallet weight
X-1	10'	Galvanized	30	56 lbs.	21	1166 lbs.
X-1	10'	Zinc	30	49 lbs.	21	1008 lbs.
X-1	10'	Stainless	30	56 lbs.	21	1166 lbs.
X-2	10'	Galvanized	30	76 lbs.	21	1600 lbs.
X-2	10'	Zinc	30	67 lbs.	21	1407 lbs.
Wire	10'	Galvanized	40	44 lbs.	24	1056 lbs.

AMICO Wire Corners are discussed further on page 12 (Specialty Products)



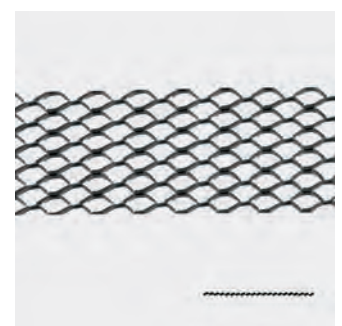
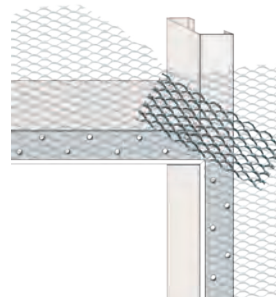
**Cornalath** is used to reinforce corners and help prevent cracks. The 105° angle offers resistance when placed to the inside of the corner over the lath. Available in galvanized steel only.

Length	Pieces/ carton	Weight/ carton	Cartons/ pallet	Pallet weight
3" x 3" – 8'	75	70.8 lbs.	15	1062.0 lbs.



**Striplath** is galvanized, diamond mesh lath, produced in 6" wide strips with smooth edges. Striplath is used to reinforce plaster at the corners of door and window openings to reduce cracks caused by stress.

Length	Pieces/ carton	Weight/ carton	Cartons/ pallet	Pallet weight
6" x 8'	75	70.8 lbs.	20	1416 lbs.



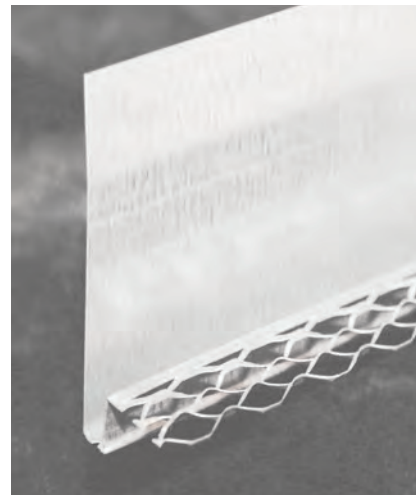
AMICO recommends the use of zinc or vinyl accessories for all exterior applications in coastal areas. Contact your AMICO representative for a vinyl catalog or visit our website.



# METAL ACCESSORIES

**CI Weep Trac™** for Continuous Insulation applications is a new component that permits the application of stucco or thin veneer stone over rigid insulation that is attached to the outside of the building envelope when seeking to comply with the 2012 International Energy Conservation Code. AMICO's CI Weep Trac System facilitates that short return of stucco back to the wall at doors, windows, and soffits. Additionally, the CI Weep Trac is an effective foundation weep screed at the base of the wall, meeting International Building Code (IBC Chapter 25) requirements.

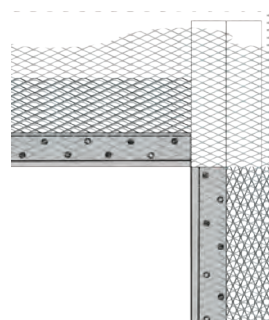
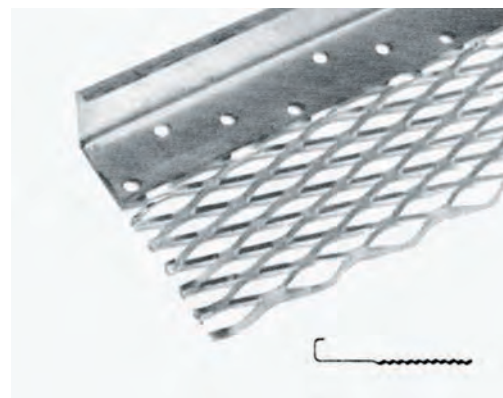
The 3½" nailing flange serves as a flashing when water-resistant, breathable building paper or paper-backed lath is installed over the flange. Available with holes in the "trough" to offer minor moisture weeping capabilities over window and door heads, bases of walls or other conditions that require drainage. Fire Testing: Pass, NFPA 285-Multi-Story flammability test. (Patent# D703,306S and D703,307S) The 3/4" ground will work with 5/8" hard coat systems.



Ground	Length	Nailing flange width	Finish	Box Count
3/4"	10'	3 1/2"	Galvanized Zinc	20 20

**X-66 Expanded Flange Casing Bead** has a 3" expanded mesh flange with a 1/4" return leg. This trim is used to terminate plaster or stucco around doors, windows or any other opening.

Ground	Length	Pieces/carton	Finish	Weight/carton	Cartons/pallet	Pallet weight
3/8"	10'	30	Galvanized	44 lbs.	20	880 lbs.
1/2"	10'	30	Galvanized Zinc	47 lbs. 44 lbs.	20	940 lbs. 880 lbs.
5/8"	10'	30	Galvanized Zinc	49 lbs. 47 lbs.	20	980 lbs. 940 lbs.
3/4"	10'	30	Galvanized Zinc Stainless	51 lbs. 49 lbs. 71 lbs.	20 20	1020 lbs. 980 lbs. 1704 lbs.
7/8"	10'	30	Galvanized Zinc	53 lbs. 51 lbs.	20	1060 lbs. 1020 lbs.
1"	10'	30	Galvanized	56 lbs.	20	1120 lbs.
1 1/4"	10'	30	Galvanized	59 lbs.	20	1180 lbs.
1 1/2"	10'	30	Galvanized	76 lbs.	20	1520 lbs.



X-66, N-66 and J-Metal Bead available with optional weep holes.

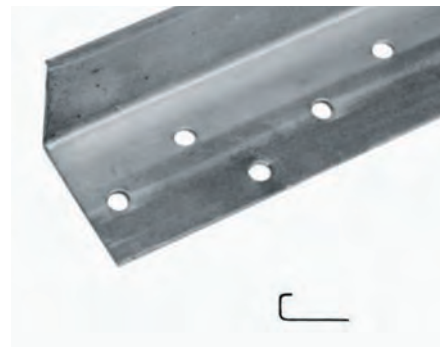
These beads should not be used in lieu of an FHA-approved weep screed at base of wall to be in compliance with ASTM C1063.



# METAL ACCESSORIES

**N-66 Narrow Wing Casing Bead** is primarily a West Coast product with a profile similar to the X-66, but without the expanded flange. Nail and keying holes are provided in the flange, which is approximately 1-3/8" wide.

Ground	Length	Pieces/ carton	Finish	Weight/ carton	Cartons/ pallet	Pallet weight
3/8"††	10'	30	Galvanized Zinc †	37 lbs. 35 lbs.	30	1110 lbs. 1050 lbs.
1/2" ††	10'	30	Galvanized Zinc †	39 lbs. 37 lbs.	30	1170 lbs. 1110 lbs.
3/4"	10'	30	Galvanized	44 lbs.	30	1320 lbs.
7/8"††	10'	30	Galvanized Zinc †	47 lbs. 45 lbs.	30	1410 lbs. 1350 lbs.
1"	10'	30	Zinc †	45 lbs.	30	1350 lbs.



†† Weep holes are optional.

**J-Metal Bead** is used with one-coat stucco systems, three-coat stucco systems or thin veneer stone. Optional holes in ground are spaced at 6" centers.

Ground A	Length	Pieces/ bundle	Nailing flange height B	Weight/ bundle	Bundles/ pallet
3/8"	10'	10	3 1/2"	26 lbs.	50
1/2"	10'	10	3 1/2"	28 lbs.	50
3/4"	10'	10	3 1/2"	29 lbs.	50
7/8"	10'	10	3 1/2"	30 lbs.	50
1-3/8"††	10'	10	1 3/4" 3 1/2"	21 lbs. 35 lbs.	50 50
1-1/2"††	10'	10	1 3/4" 3 1/2"	24 lbs. 36 lbs.	50 50



**Foundation Weep Screed (FHA #7)** is required at the base of walls as part of a drainage for exterior stucco or veneer stone applications. The 3 1/2" nailing flange serves as flashing when Grade D building paper or Tilath™ Starter Strip is installed over the flange. Holes are punched into the nailing flange for easy attachment to the wall. Holes are also placed on top of the "V" portion of the flange to provide keying of the stucco mud when wet.

Ground A	Pieces/ bundle	Nailing flange width	Finish	Weight/ bundle	Bundles/ pallet
1/2"	10	3 1/2"	Galvanized	32 lbs.	100
5/8"	10	3 1/2"	Galvanized	34 lbs.	100
3/4"	10	3 1/2"	Galvanized Stainless	41 lbs. 36 lbs.	100 100
7/8"	10	3 1/2"	Galvanized Zinc †	36 lbs. 32 lbs.	100 100
1 3/8"	10	3 1/2"	Galvanized	41 lbs.	50



† Zinc Alloy available with a minimum quantity and additional lead time.

†† Weep holes are optional.

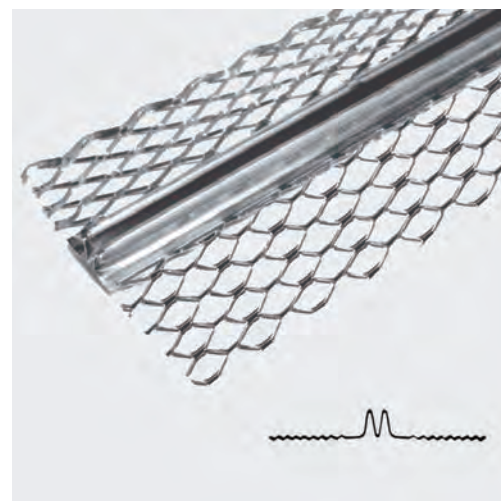
# METAL ACCESSORIES

## Control Joints versus Expansion Joints

Control Joints (CJ) are 1-piece joints designed to relieve stress and minimize cracking; they accommodate initial stucco shrinkage and minor thermal movement. The Control Joints are required to form membrane panels no larger than 100 sf for ceilings and 144 sf for walls. Expansion Joints (EJ) are 2-piece joints designed to accommodate a full break through the structure across dissimilar surfaces or to deal with some minor structural movement.

**AMICO Control Joint (#15 Joint or M-Type)** is designed to provide for movement to accommodate expansion and contraction caused by initial stucco shrinkage and minor thermal movement. Produced in galvanized steel and zinc alloy in 10' lengths. Pre-taped to ensure a clean joint.

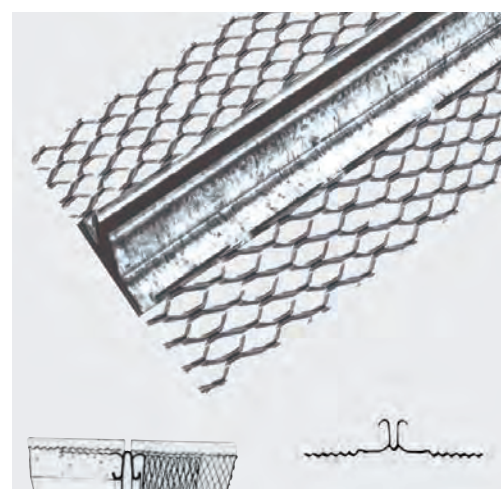
Ground	Pieces/ carton	Finish	Weight/ carton	Cartons/ pallet	Pallet weight
3/8"	24	Galvanized	49 lbs.	20	980 lbs.
1/2"	24	Galvanized Zinc	66 lbs. 50 lbs.	20 20	1320 lbs. 1000 lbs.
5/8"	24	Galvanized Zinc	65 lbs. 58 lbs.	20 20	1320 lbs. 1150 lbs.
3/4"	24	Galvanized Zinc Stainless	71 lbs. 61 lbs. 71 lbs.	20 20 20	1420 lbs. 1220 lbs. 1420 lbs.
7/8"	24	Galvanized Zinc	83 lbs. 71 lbs.	20 20	1660 lbs. 1420 lbs.



Control joint installed on top of lath to facilitate wire tying flange of joint to the lath

**Griplock J Control Joint (#XJ15 Joint)** is similar to the M Control Joint except the J design provides locking of the stucco to the edge of the joint. This design helps reduce stucco separation at the edge of the joint when stucco is forced under the J flange. Produced in 10' lengths. Griplock J comes pre-taped to ensure a clean joint.

Ground	Pieces/ carton	Finish	Weight/ carton	Cartons/ pallet	Pallet weight
1/2"	24	Galvanized Zinc	70 lbs. 61 lbs.	20	1400 lbs. 1220 lbs.
3/4"	24	Galvanized	77 lbs.	20	1540 lbs.
7/8"	24	Zinc	66 lbs.	20	1320 lbs.

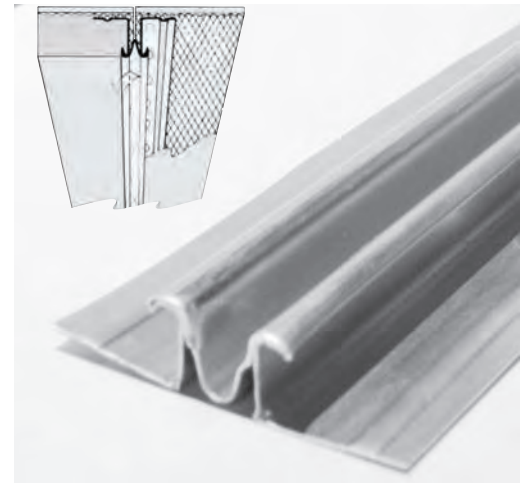


Zinc Alloy available with a minimum quantity and additional lead time.

# METAL ACCESSORIES

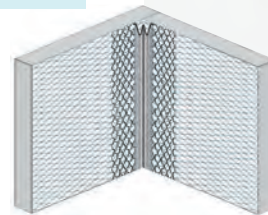
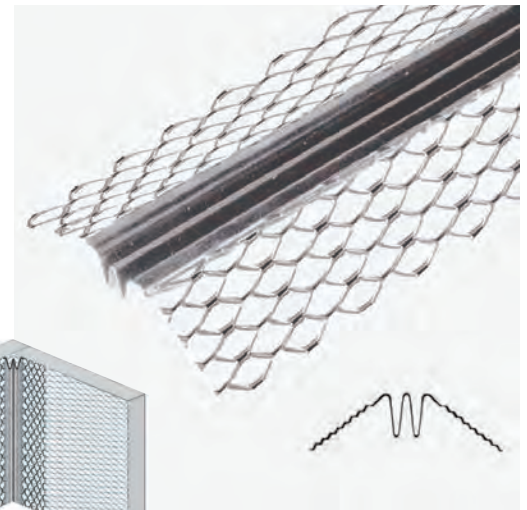
**Zinc Control Joint** has a solid flange with large holes that aid in the attachment of adjoining metal lath. The improved shoulder design allows for easier stucco embedment and increases holding capacity at the joint to minimize cracking. CJ comes pre-taped to ensure a clean joint. Produced in 10' lengths.

Product #	Grounds	Pieces/ carton	Weight/ carton	Cartons/ pallet	Pallet weight
CJ380	3/8"	25	51 lbs.	20	1020 lbs.
CJ500	1/2"	25	60 lbs.	20	1200 lbs.



**Inside Corner Control Joint (#30 Joint)** is similar to the standard M-Type joint, but the flanges are bent to an angle to form inside corners, allowing movement. Produced in galvanized steel in 10' lengths. Verify availability and lead-time.

Ground	Pieces/ carton	Finish	Weight/ carton	Cartons/ pallet	Pallet weight
1/2"	24	Galvanized	66 lbs.	20	1320 lbs.
7/8"	24	Galvanized	80 lbs.	20	1600 lbs.



**2-Piece Expansion Joint (#40 Joint)** is used to accommodate movement both horizontally and vertically caused by expansion and contraction in the structure. Installed at through wall expansion joints or where there is a transition from one type of construction to another such as with CMU to wood or metal framing. The opening in the joint is adjustable from 1/4" to 5/8". Produced in 10 ft. lengths.

Ground	Pieces/ carton	Finish	Weight/ carton
1/2"	15	Galvanized Zinc	57 lbs. 53 lbs.
3/4"	15	Galvanized Zinc	61 lbs. 57 lbs.
7/8"	15	Galvanized Zinc	53 lbs. 59 lbs.



#40 Joint is a special order and requires additional lead



# INSTALLATION KEY POINTS

These installation key points are based upon acceptable industry practice and ASTM C1063-17a Standard Specification for Installation of Metal Lath.

Always consult your area building official before beginning any project to familiarize yourself with any local code requirements. This guide should not replace the designs and judgments of a qualified engineer and or architect. These key points reflect the revision of C1063 at the time the catalog was printed.

## Lath Installation

Permanently attach foundation weep screed to the solid substrate at the bottom of wood or metal framed exterior walls as directed by code. Attach 6" wide Grade D Tilath™ Starter Strip over the weep screed to assure proper ship-lapping of the WRB. Install lath beginning at the bottom right hand corner of the wall. With paper backed lath leave the paper hanging over at the top and to the left of the sheet. The backing is offset on the lath allowing for a minimum 2" paper overlap on one end and one side. The paper is retracted on the opposite end and side. The long dimension of the sheets should always be installed perpendicular to the framing. As traditionally installed when one's hand is moved in a downward motion, it is smooth and rough when moved upward. Lap lath minimum 1/2" at sides and 1" at ends with laps paper to paper and metal to metal. Apply the second sheet to the left of the first sheet lapping lath over lath and paper over paper allowing moisture to move to the exterior. Place the third sheet centered above the first two sheets. This staggers the vertical butt joint seams and allows a more uniform dispersal of stress, a similar process to laying brick. Lath is to be furred away from vertical supports in excess of 1-5/8" wide or solid surfaces at least 1/4". AMICO Self-furring dimpled and V-Groove lath meets these furring requirements. Finish materials are subject to a maximum span or spacing between framing members. In order to understand lath selection and framing, refer to the table on page 3 of this catalog (Support Spacing For Metal Lath) or Table 3 of ASTM C1063. Shears or metal cutting scissors can be used to notch and cut lath.

**Rib Lath Installation** – Due to increased possibilities of unacceptable cracking AMICO does not recommend high rib lath on vertical surfaces. Rib lath is to be installed with the nose of the V-ribs in direct contact with framing members. Overlap sheets one rib and ends a minimum 1". End to end joints of rib lath to be wire tied at each rib.

## Lath Fasteners

**Wood Framing** – Attach lath to vertical wood framing members with 1" roofing nails or 6d common nails bent over to engage not less than three strands of lath or 1" wire staples with 3/4" crown driven flush with the plaster base. All driven fasteners penetrate framing a minimum of 3/4". When lath is applied over sheathing fasteners shall penetrate the structural members not less than 3/4". Screws to attach lath to horizontal wood framing shall penetrate framing not less than 5/8" and shall engage not less than three strands of lath. Lath shall be attached to horizontal wood framing members with 1-1/2" roofing nails with a minimum 7/16" diameter head driven flush with the plaster base.

**Metal Framing** – Lath shall be attached to metal framing members with 0.0475" (18GA) wire ties, clips or by other means of attachment which afford carrying strength and resistance to corrosion equal to or superior to that of the wire. Screws shall be of a length sufficient

to allow fasteners to extend through steel connectons with a minimum of three exposed threads.

**Concrete** – Attach lath to masonry or concrete with power or powder actuated fasteners or hardened concrete stub nails. One fastener attached at each corner and one at the mid-point of the long dimension along the edge of the sheet. Install remaining fasteners in rows not more than 16" on center and vertically spaced rows not more 7" on center. All fasteners shall be corrosion resistant, not less than 3/4" long, with head diameter not less than 3/8" and 0.102-in shank. With Insulated Concrete Forms (ICF) consult the manufacturer.

**Rib Lath** – 3/8" rib lath shall be attached to horizontal wood framing members with nails or staples with penetration into framing members not less than 1-3/4". Screws shall penetrate wood framing not less than 5/8" and metal framing not less than 3/8" and pass through, but not deforming the rib. Rib lath is attached at each rib along framing members. Rib lath attached to open-web steel joists by single ties of galvanized, annealed steel wire, not less than 0.0475" with the ends of each tie twisted together 1-1/2 times. Rib lath attached to concrete joists with loops of 0.080" galvanized, annealed steel wire, with the ends of each loop twisted together.

## Fastener Spacing

**Lath** – Spacing of rows of nails, staples or screws corresponds to the framing spacing and rows spaced 7" on center vertically. Where end laps occur between framing members, the ends of sheets shall be laced or wire-tied with 0.0475-in galvanized tie wire. Attach accessories to remain properly aligned during application every 7" on center with nails, staples or tie wire. C1063 states attachment penetrations between framing members shall be avoided.

## Accessory Fasteners

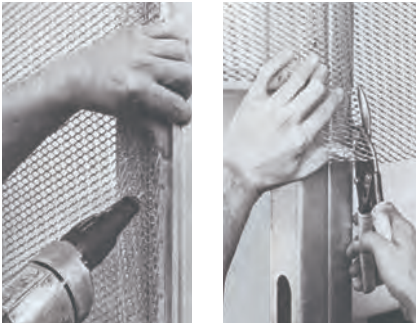
**Accessories** – Attach weep screed, corner and casing beads with nails, staples or tie wires along the framing member (horizontal or vertical). Wrap lath through external corners with corner bead then fasten true and plumb. Casing beads shall terminate finish around doors, windows or other openings. We recommend the use of zinc alloy, vinyl or stainless steel accessories for all exterior applications. Galvanized fasteners are not to be used with stainless steel lath or accessories unless separated by non-metallic spacers. All vinyl butt joints should be embedded in sealant and sealed after installation as required.

**Expansion and Control Joints** – It is difficult to anticipate or prevent plaster cracks; they can be largely controlled by means of 2-piece expansion joints. Expansion Joints permit some degree of movement in the stucco membrane caused by movement of the building or its components thus minimizes damage to the stucco and weather resistive barrier. 1-piece Control Joints shall be installed to minimize stress due to stucco curing and drying shrinkage and minor movement, along predetermined lines and as a screed to aid in stucco thickness control. Walls and ceilings that use lath for the plaster base should be divided into rectangular panels with control joints at least every 18-feet or at the juncture of a dissimilar wall, or in either direction in a length to width ratio of 2½ to 1, or in ceilings exceeding 100-sf or walls exceeding 144-sf 4in area. These joints should be installed so the lath is broken underneath the joint and wire tied to the lath to function properly. WRB shall be continuous beneath expansions and control joints.

# INSTALLATION DETAIL PHOTOS

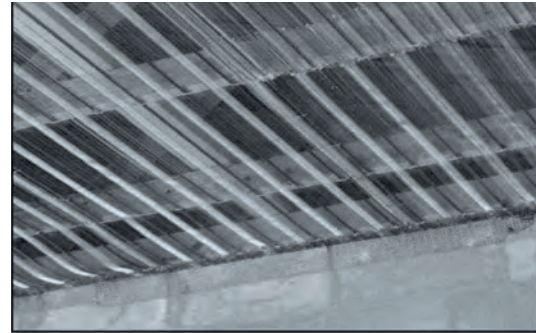
## Attachment of Lath to studs

- 1) 7/16" wafer head screws are power driven to allow quick and easy attachment of Diamond Mesh Lath to framing members.
- 2) Diamond Mesh Lath can be cut to size with hand tools.



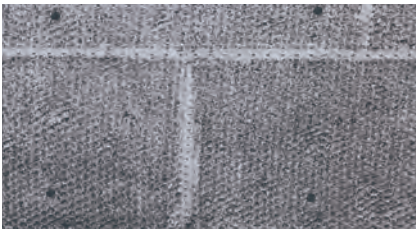
## Attachment of Rib Lath to ceilings

- 1) 3.4# 3/8" High Rib Lath is attached with nose of rib in contact with the ceiling joist and spaced at 24" o/c max.



## Attachment to solid surfaces

- 1) Self-Furred Diamond Mesh Lath is secured to masonry surfaces with corrosion-resistant, hardened concrete nails, power or powder driven fasteners and stub nails following guidelines per ASTM C1063. Paper backed lath is often used in this type of application as a bond breaker.



- 2) The scratch coat is applied with complete embedment of the self-furred lath in the plaster.



- 3) Scratch coat is fully embedded in the lath and is isolated from supporting structure. Water resistant backing paper allows controlled and uniform curing of this plaster foundation.

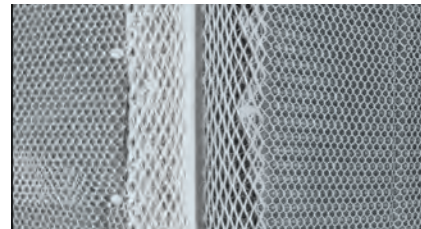


## Attachment of trims/joints

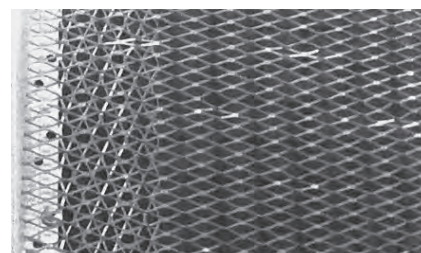
- 1) Type "M" Control Joint is installed vertically over the window opening allowing for expansion and contraction.



- 2) AMICO X-1 Corner Bead provides protection for outside corners and a reliable straight ground for screeding.



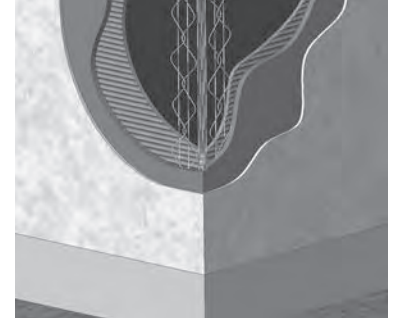
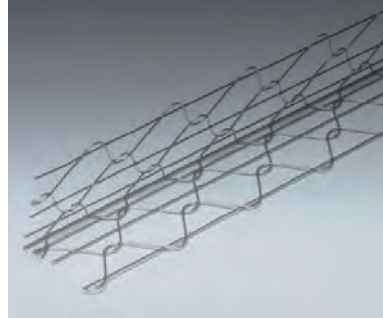
- 3) X-66 Expanded Casing Bead is typically installed at door and window openings as a plaster stop.



# SPECIALTY WIRE PRODUCTS

**Wire Corners** provide for rounder corners, embedding all reinforcement. They are manufactured and formed from zinc coated wire and packaged in standard 10' lengths. Wire corners are packaged 40 pieces per carton with 24 cartons per pallet.

Style	Flange Size	Weight/ Carton
Straight	2.5" x 2.5"	48.0 lbs.
Straight BN <sup>†</sup> (7/8")	2.5" x 2.5"	36.8 lbs.
Straight 2-wire <sup>†</sup>	2.5" x 2.5"	49.4 lbs.
Arch	2.5" x 2.5"	34.0 lbs.
Arch BN Short <sup>†</sup>	2.5" x 1.5"	34.0 lbs.
Bullnose	2.5" x 2.5"	48.0 lbs.
Bullnose 2-wire <sup>†</sup>	2.5" x 2.5"	49.4 lbs.
Short Flange	2.5" x 1.5"	48.0 lbs.
Short Flange BN <sup>†</sup> (7/8")	2.5" x 1.5"	40.0 lbs.



<sup>†</sup> Wire Corner Bead special order with a minimum quantity and additional lead time.

**Galvanized Hanger Wire** are used to support CRC gridwork for stucco and acoustical or drywall ceilings. Hanger wire is produced in #9 gauge galvanized soft annealed steel in 12' lengths.

Product	Gauge	Length	Weight/package
Hanger Wire	9	12'	50 lb. hanks





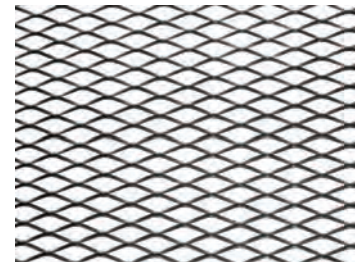
# STAINLESS STEEL LATH & ACCESSORIES



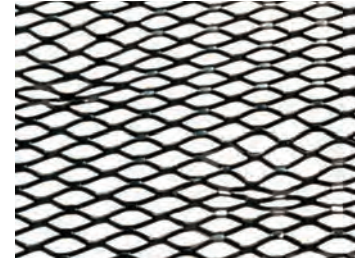
**Stainless Steel Type 304** provides excellent corrosion resistance for specialty lath applications. SS304 Lath can be used over sheathing boards to carry conventional stucco/stone finishes and for external insulation requirements. SS304 Lath is used in coastal environments, near water, fireproofing or where higher corrosion resistance is desired. Produced both flat and self-furred (Dimpled).

When stainless steel lath and stainless accessories are installed adjacent to galvanized lath or accessories the two dissimilar materials shall be separated by a non-metallic spacer.

Weight/sq. yard	Alloy	Sheet weight	Nominal sheet size	Sheets/bundle
2.5 lbs.	304	approx. 5.00 lbs.	27" x 97"	10
3.4 lbs.	304	approx. 6.80 lbs.	27" x 97"	10



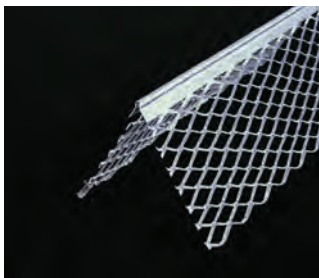
Flat Lath



Dimpled Lath

## Stainless Steel Corner Bead

Product	Ground	Length	Pieces/carton	Weight/carton
Corner Bead		10'	30	56 lbs.



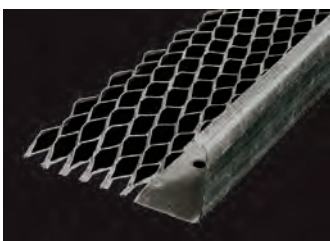
## Stainless Steel Control Joint

Product	Ground	Length	Pieces/carton	Weight/carton
Control Joint	3/4"	10'	24	71 lbs.



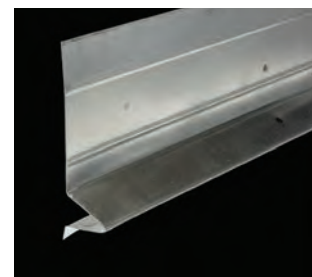
## Stainless Steel Casing Bead

Product	Ground	Length	Pieces/carton	Weight/carton
Casing Bead	3/4"	10'	30	51 lbs.
Casing Bead	7/8"	10'	30	58 lbs.

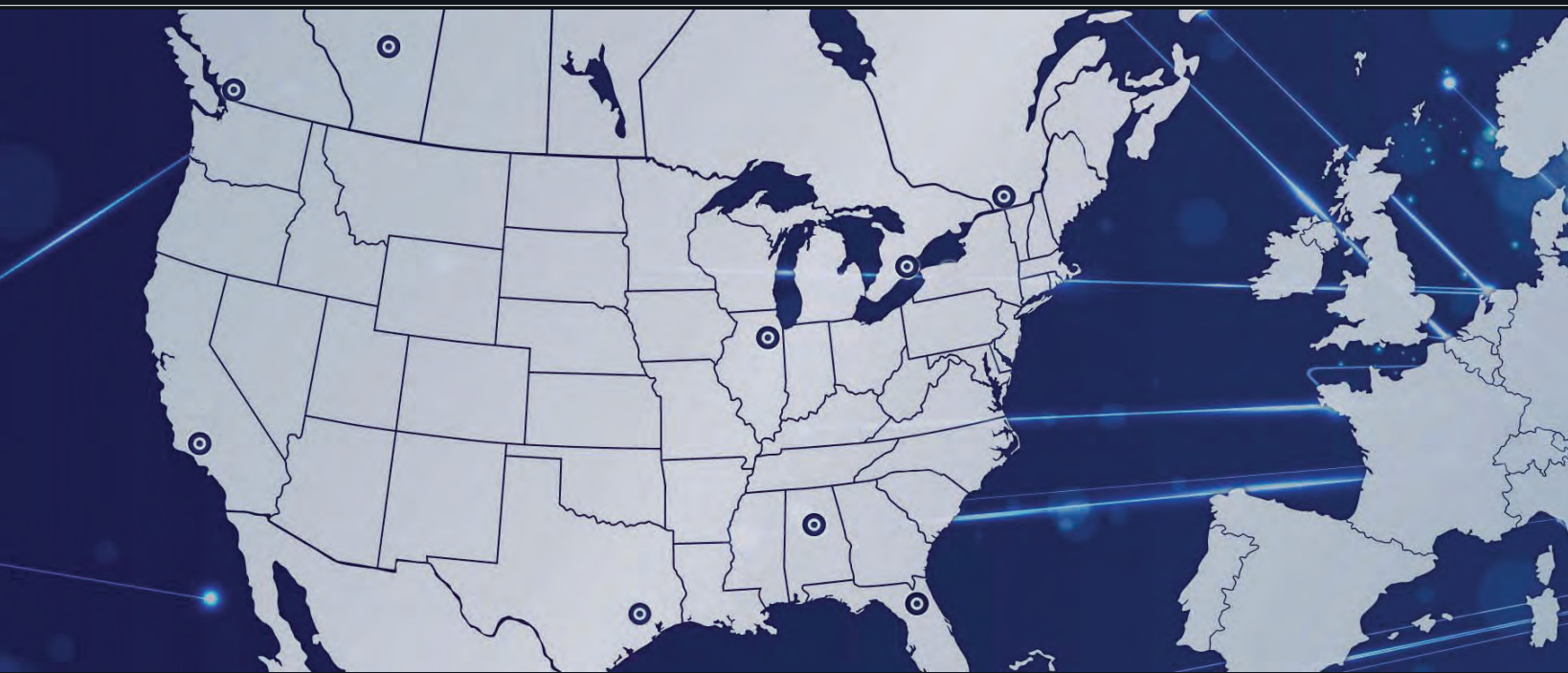


## Stainless Steel Foundation Weep Screed

Product	Ground	Length	Pieces/carton	Weight/carton
Weep Screed	7/8"	10'	10	36 lbs.



Call for availability and lead time for Stainless Steel lath and accessories.



#### AMICO Locations

##### UNITED STATES

Birmingham, AL  
Bourbonnais, IL  
Fontana, CA  
Houston, TX  
Lakeland, FL

800-487-2511

##### CANADA

Burlington, ON  
800-663-4474

Edmonton, AB  
855-724-7283

Montreal, QC  
800-463-3255

Vancouver, BC  
800-665-4474



Visit [amicoglobal.com](http://amicoglobal.com) to view or download data sheets, request a catalog, request LEED information or receive technical assistance.



A GIBRALTAR INDUSTRIES COMPANY 