

Bead Accessories for EIFS and DEFS Installations

Project Submittals as manufactured by
ALABAMA METAL INDUSTRIES CORPORATION

Submittal Date:

Contract Number:

Project Name:

Section Number:

Name of Contractor:

All information contained herein is accurate as known at the time of publication. Specifications may change and AMICO reserves the right to change product specifications without notice and without incurring obligations.

ALABAMA METAL INDUSTRIES CORPORATION

3245 Fayette Avenue ♦ Birmingham, AL 35208 ♦ Telephone 800/366-2642 ♦ Facsimile 205/786-6527

RIGID VINYL EIFS / DEFS ACCESSORIES

SCOPE

This submittal covers vinyl accessories; both Class PB and Class PM systems installed with Exterior Insulation Finish Systems (EIFS) or Direct-Applied Exterior Finish Systems (DEFS). Used to create and provide straight edges, moisture management proper expansion control, architectural reveals and soffit ventilation.

TYPES OF ACCESSORIES

This submittal includes the following types of accessories used for EIFS and DEFS installations: corner beads, drip edge, casing beads, starter track beads, expansion joints, control joints, soffit vents and miscellaneous components.

MATERIALS

Rigid Poly (Vinyl Chloride) (PVC) compounds meeting
ASTM 4216 for exterior applications
ASTM 1784 for interior applications
Superior corrosion resistance. Do not deteriorate with time.

THICKNESS OF BASE MATERIALS

Thicknesses follow Table 1, PVC Components, as listed ASTM C1063 Table 1.

FINISH

PVC shall be mill finish and shall be compatible with standard acrylic paint finishes. Standard color is white.

COMBUSTIBILITY / FIRE RESISTANCE

Rigid vinyl components are self extinguishing, and do not support combustion once the flame source is removed. Therefore rigid vinyl will not cause, re-ignite or spread a fire.

All butt joints, intersections, and ends should be joined, embedded and sealed in a quality sealant compatible with exterior paint finish.

PACKAGING AND PACKAGE MARKING

Generally available in 10-ft long lengths. Longest possible lengths shall always be installed to avoid joints. Each factory box shall be marked with manufacturer's name, style of accessory and country of origin.

REFERENCES

AMICO VINYL ACCESSORIES FOR DRYWALL MEET THE FOLLOWING STANDARDS

ASTM D1784 Standard Specification for Rigid Poly(Vinyl Chloride) (PVC) Compounds and Chlorinated Poly(Vinyl Chloride) (CPVC) Compounds

ASTM D4216 Standard Specification for Rigid Poly(Vinyl Chloride) (PVC) and Related PVC and Chlorinated Poly(Vinyl Chloride) (CPVC) Building Products Compounds.

ASTM E2110 Standard Terminology for Exterior Insulation and Finish Systems (EIFS)

CODE ACCEPTANCE

Meets Buy American Procurement Requirements.
Made in the United States of America
LEED: 100% post industrial recyclable content

All information contained herein is accurate as known at the time of publication. Specifications may change and AMICO reserves the right to change product specifications without notice and without incurring obligations.

ALABAMA METAL INDUSTRIES CORPORATION

3245 Fayette Avenue ♦ Birmingham, AL 35208 ♦ Telephone 800/366-2642 ♦ Facsimile 205/786-6527



EIFS CORNER BEAD

FOR EIFS APPLICATIONS

Produces straight and durable corners while allowing for finish thickness. It also eliminates the need for the time consuming task of rasping corners to achieve a smooth, plumb and level corner. The absence of a rounded nose allows the EIFS corner bead to lie perfectly flat on the two adjoining walls that form the corner.

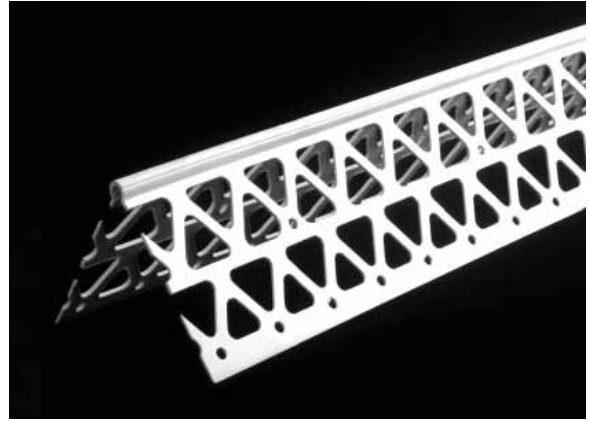
Product Submittal	Product Number	Dimensions
	AMX4	2½" x 2½"
Standard Length is 10-ft.		

FINISH

The finish on all AMICO vinyl EIFS /DEFS accessories is compatible with standard acrylic and paint finishes. Standard Color is white.

REFERENCES

PVC complies with ASTM D1784 and D4216
ASTM E2110 Standard Terminology for Exterior Insulation and Finish Systems (EIFS)
Meets Buy American Procurement Requirements
Made in the United States of America
LEED: 100% post industrial recyclable content



CAD Detail Name:
[EIFS Vinyl Corner Bead](#)
Click Link to go to Print Details

All information contained herein is accurate as known at the time of publication. Specifications may change and AMICO reserves the right to change product specifications without notice and without incurring obligations.

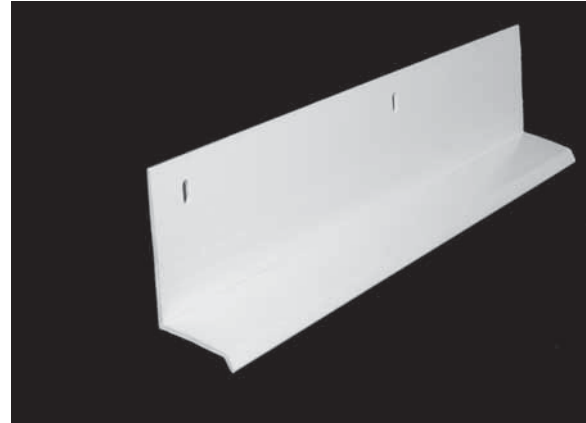
ALABAMA METAL INDUSTRIES CORPORATION

3245 Fayette Avenue ♦ Birmingham, AL 35208 ♦ Telephone 800/366-2642 ♦ Facsimile 205/786-6527

EIFS VINYL WINDOW and DOOR DRIP EDGE

FOR EIFS APPLICATIONS

Provides added protection for edges of the building envelope at the top of windows and doors. The purpose of the AMICO Drip Edge is to help direct water away from the structure. Provided with a 2-inch high nailing flange.



Product Submittal	Product Number	Board Thickness	Finish Thickness
	AMWDE-75-16	3/4"	1/16"
	AMDWE-100-16	1"	1/16"
	*AMDWE-100-25	1"	1/4"
	AMDWE-150-16	1 1/2"	1/16"
	AMDWE-200-16	2"	1/16"
Standard Length is 10-ft.			

FINISH

The finish on all AMICO vinyl EIFS /DEFS accessories is compatible with standard acrylic and paint finishes. Standard Color is white.

COLORS

Standard color is white. This profile can be specified and ordered with the exposed area in tan, brown or gray.



REFERENCES

PVC complies with ASTM D1784 and D4216
ASTM E2110 Standard Terminology for Exterior Insulation and Finish Systems (EIFS)
Meets Buy American Procurement Requirements
Made in the United States of America
LEED: 100% post industrial recyclable content

All information contained herein is accurate as known at the time of publication. Specifications may change and AMICO reserves the right to change product specifications without notice and without incurring obligations.

ALABAMA METAL INDUSTRIES CORPORATION

3245 Fayette Avenue ♦ Birmingham, AL 35208 ♦ Telephone 800/366-2642 ♦ Facsimile 205/786-6527

EIFS VINYL STARTER TRACK CASING WITHOUT DRIP EDGE

FOR EIFS APPLICATIONS

Installed at the bottom of the wall as a starter track, but is usually installed around the perimeter of the wall as a casing to protect the edge of the foam board and the finish from damage and the elements. This product has drainage holes, but does not have a drip edge. Ridges and perforations on the face of this bead aid in finish adhesion. Excellent adhesion of EIFS finishes and paint can be expected with all AMICO vinyl EIFS beads.



Product Submittal	Product Number	Dimensions	Board Thickness
	AMST-1000	3" x 1"	1"
	AMST-1500	3" x 1½"	1½"
	AMST-2000	3" x 2"	2"
Profile is 3-inches High			
Standard Length is 10-ft.			

FINISH

The finish on all AMICO vinyl EIFS /DEFS accessories is compatible with standard acrylic and paint finishes. Standard Color is white.

REFERENCES

PVC complies with ASTM D1784 and D4216
ASTM E2110 Standard Terminology for Exterior Insulation and Finish Systems (EIFS)
Meets Buy American Procurement Requirements
Made in the United States of America
LEED: 100% post industrial recyclable content

All information contained herein is accurate as known at the time of publication. Specifications may change and AMICO reserves the right to change product specifications without notice and without incurring obligations.

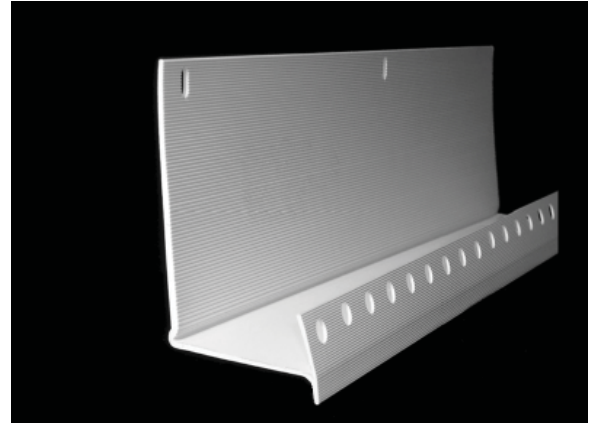
ALABAMA METAL INDUSTRIES CORPORATION

3245 Fayette Avenue ♦ Birmingham, AL 35208 ♦ Telephone 800/366-2642 ♦ Facsimile 205/786-6527

EIFS VINYL ANGLED STARTER TRACK CASING WITH DRIP EDGE AND DRAINAGE HOLES

FOR EIFS APPLICATIONS

This AMICO profile is typically installed at the bottom of the wall as a starter track to protect the bottom edge of the foam board and finish from damage and the elements. It is provided with drip edge and drainage holes. Ridges and perforations on the face of this bead aid in finish adhesion. The angled channel helps funnel accumulated moisture to the drainage holes in the track which allows this moisture to exit.



Product Submittal	Product Number	Dimensions	Board Thickness
	AMSTA-1000	3" x 1"	1"
	AMSTA-1500	3" x 1½"	1½"
	AMSTA-2000	3" x 2"	2"
Profile is 3-inches High			
Standard Length is 10-ft.			

FINISH

The finish on all AMICO vinyl EIFS /DEFS accessories is compatible with standard acrylic and paint finishes. Standard Color is white.

REFERENCES

PVC complies with ASTM D1784 and D4216
ASTM E2110 Standard Terminology for Exterior Insulation and Finish Systems (EIFS)
Meets Buy American Procurement Requirements
Made in the United States of America
LEED: 100% post industrial recyclable content

All information contained herein is accurate as known at the time of publication. Specifications may change and AMICO reserves the right to change product specifications without notice and without incurring obligations.

ALABAMA METAL INDUSTRIES CORPORATION

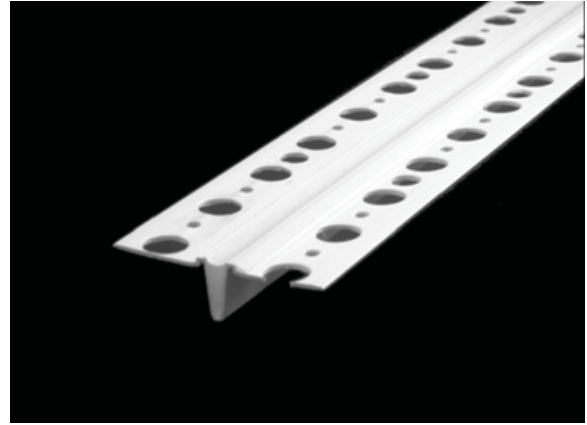
3245 Fayette Avenue ♦ Birmingham, AL 35208 ♦ Telephone 800/366-2642 ♦ Facsimile 205/786-6527

EIFS VINYL EXPANSION JOINT DEEP "V"

WITH REMOVABLE TAPE
FOR EIFS APPLICATIONS

with removable tape are manufactured with a deep center "V" which allows for more movement than would normally be possible with one that matched the thickness of the finish coat. This bead requires that a space be left between sheets of foam or routed into the foam board or exterior sheathing to accommodate the deep center "V". All surfaces that receive finish have ridges for better adhesion.

1/16" ground is typically used with EIFS finish systems.



Product Submittal	Product Number	Finish Thickness	Expansion Reveal
	AMCJV-160	1/16"	3/16"
Overall Width 2 1/4"			
Deep "V" Protrudes 3/4-inch Below the Flange			
Standard Length is 10-ft.			

All information contained herein is accurate as known at the time of publication. Specifications may change and AMICO reserves the right to change product specifications without notice and without incurring obligations.

ALABAMA METAL INDUSTRIES CORPORATION

3245 Fayette Avenue ♦ Birmingham, AL 35208 ♦ Telephone 800/366-2642 ♦ Facsimile 205/786-6527