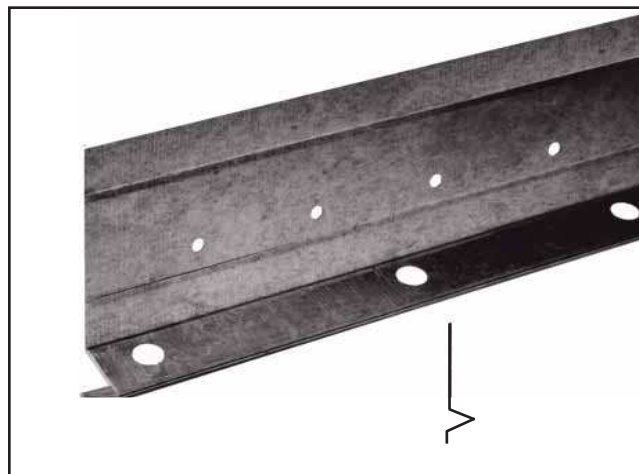


### FOUNDATION WEEP SCREED Solid Zinc Alloy Construction

#### FOR STUCCO AND PLASTER INSTALLATIONS

The 3½" nailing flange serves as a flashing when water resistant breathable building paper or paper backed lath is installed over the flange. The holes in the "V" stop act primarily as a keying mechanisms and also offer minor moisture weeping capabilities. As stucco cures it will shrink slightly away from the "V" stop allowing moisture to flow down the building paper and exit down the sloped surface.



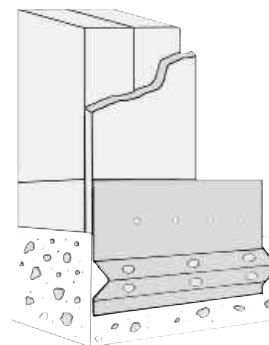
Submitted Product	Product Number	Ground
	FHA #7	7/8"
Standard Package Lengths are 10-ft.		

#### DESCRIPTION

This standard FHA approved screed is required at the base of walls as part of a drainage system for exterior stucco or manufactured stone applications.

#### Materials

Zinc Alloy



Refer to ASTM C1063 for support spacing, lath selection, fastener selection and further information regarding the proper installation of metal lath.

ASTM and most codes require hot dipped galvanized lath for all exterior applications.

Meets Buy American Procurement Requirements.  
Made in the United States of America

All information contained herein is accurate as known at the time of publication. Specifications may change and AMICO reserves the right to change product specifications without notice and without incurring obligations.

#### ALABAMA METAL INDUSTRIES CORPORATION

3245 Fayette Avenue ♦ Birmingham, AL 35208 ♦ Telephone 800/366-2642 ♦ Facsimile 205/786-6527  
email [fmayer@gibraltar1.com](mailto:fmayer@gibraltar1.com)