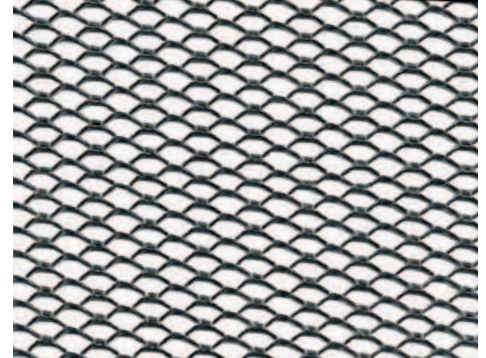


# DIAMOND MESH LATH

**Flat Lath** is manufactured from prime quality steel sheets that are slit and expanded to form small diamond shaped openings. This large number of openings provides more plaster keys, providing better scratch coat bonding in either pumped or troweled applications. Each sheet has square ends and smooth parallel edges on sides for fast, easy handling and bending for curved surfaces. G60 galvanized finish to ASTM A653 and ASTM C847.

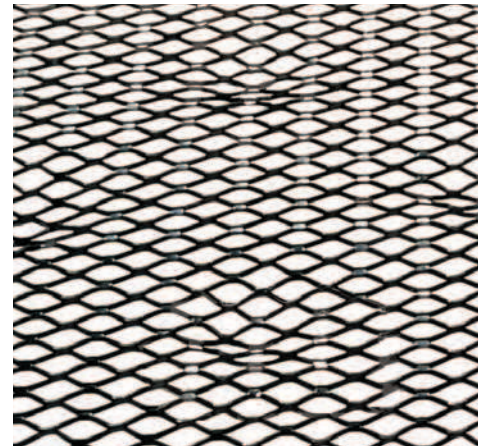
Weight/sq. yard	Finish	Sheet weight	Nominal sheet size	Sheets/bundle	Bundles/pallet	Pallet weight
2.5 lbs.	Galvanized	5.0 lbs.	27" x 97"	10	50	2500 lbs.
3.4 lbs.	Galvanized	6.8 lbs.	27" x 97"	10	50	3400 lbs.
2.5 lbs.	Stainless	5.0 lbs.	27" x 97"	10	25	1275 lbs.
3.4 lbs.	Stainless	6.8 lbs.	27" x 97"	10	25	1700 lbs.



**Self-Furred Lath** is used extensively in exterior stucco and stone work over sheathing and as a plaster base over masonry walls. Self-furring dimples or embossed "V" grooves hold the lath minimum 1/4" away from solid surfaces to aid in the keying of stucco to the lath. **AMICO self-furred lath does not require additional self-furring mechanisms to function as required by ASTM C1063.**

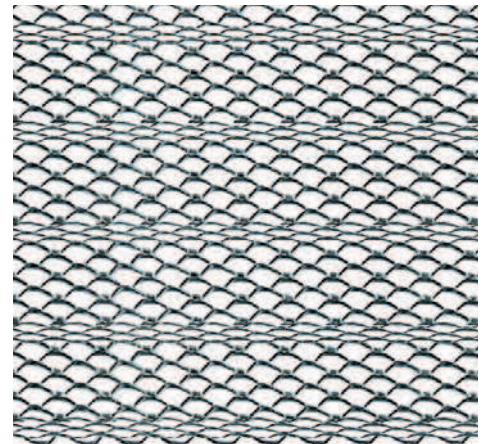
**Dimpled** (dimple spacing 5 1/4" on length with offset rows 5 1/4" apart on width)

Weight/sq. yard	Finish	Sheet weight	Sheet size	Sheets/bundle	Bundles/pallet	Pallet weight
2.5 lbs.	Galvanized	5.0 lbs.	27" x 97"	10	25	1250 lbs.
3.4 lbs.	Galvanized	6.8 lbs.	27" x 97"	10	25	1700 lbs.
2.5 lbs.	Stainless	5.0 lbs.	27" x 97"	10	25	1250 lbs.
3.4 lbs.	Stainless	6.8 lbs.	27" x 97"	10	25	1700 lbs.



**V Grooved** (embossed "V" grooves spaced 6" on center lengthwise)

Weight/sq. yard	Finish	Sheet weight	Sheet size	Sheets/bundle	Bundles/pallet*	Pallet weight
2.5 lbs.	Galvanized	5.0 lbs.	27" x 97"	10	50	2500 lbs.
3.4 lbs.	Galvanized	6.8 lbs.	27" x 97"	10	50	3400 lbs.



As per current revisions of ASTM C1063, metal lath applied to solid substrates must have 1/4" self-furring properties, built into the lath sheet. Therefore, AMICO recommends the use of self-furred (SF) lath over solid substrates, as required by current codes. Self-furring lath is not required over framing members less than 1 5/8" wide or over open framing.