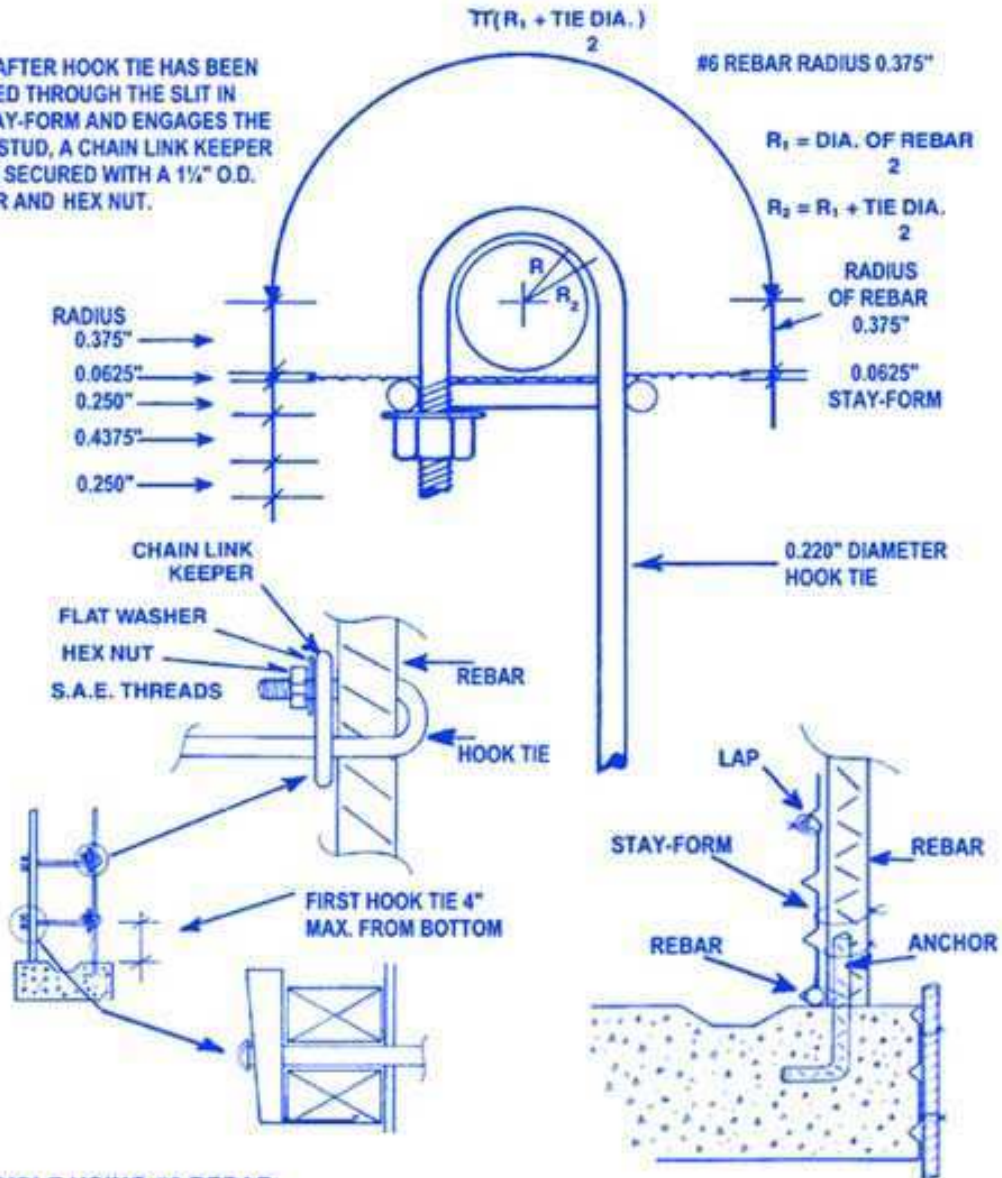


## HOOK TIE INSTALLATION FOR BLIND SIDE WALL APPLICATIONS USING STAY-FORM

NOTE: AFTER HOOK TIE HAS BEEN INSERTED THROUGH THE SLIT IN THE STAY-FORM AND ENGAGES THE REBAR STUD, A CHAIN LINK KEEPER IS THEN SECURED WITH A 1/2" O.D. WASHER AND HEX NUT.



### EXAMPLE USING #6 REBAR

NOTE: IN CALCULATING HOOK LENGTH

$$.250" + .4375" + .250" + .0625" + .375" + \left[ 3.14 \left( .375 + \frac{.220}{2} \right) \right] + .375" + .0625" = 3.34" \text{ SAY } 3\frac{1}{2}"$$

NOTE: CONTACT THE AMICO STAY-FORM DEPARTMENT IN BIRMINGHAM FOR A LIST OF HOOK TIE SUPPLIERS.