

StayForm The Cast in Place Forming System

Project Submittals as manufactured by
ALABAMA METAL INDUSTRIES CORPORATION

Submittal Date:

Contract Number:

Project Name:

Section Number: 03 30 00

Contractor's Name:

All information contained herein is accurate as known at the time of publication. Specifications may change and AMICO reserves the right to change product specifications without notice and without incurring obligations.

ALABAMA METAL INDUSTRIES CORPORATION

3245 Fayette Avenue ♦ Birmingham, AL 35208 ♦ Telephone 800/366-2642 ♦ Facsimile 205/786-6527
email fmayer@gibraltar1.com

August 2019



STAY-FORM® the stay-in-place concrete forming system

MANUFACTURER

Alabama Metal Industries Corporation,
AMICO Corporate Headquarters:
3245 Fayette Avenue; Birmingham, Alabama 35208;
Telephone: 205/787-2611; Facsimile: 205/780-3303

PRODUCT DESCRIPTION

The stay in place concrete forming system for permanent forms use in structural and architectural cast in place concrete.

PRODUCT APPLICATION

The Stay-in-place concrete forms used to create:

- | | |
|-------------|---------------------|
| bulkheads | pile caps |
| grade beams | blindside walls |
| duct banks | construction joints |
| bridges | tunnels |

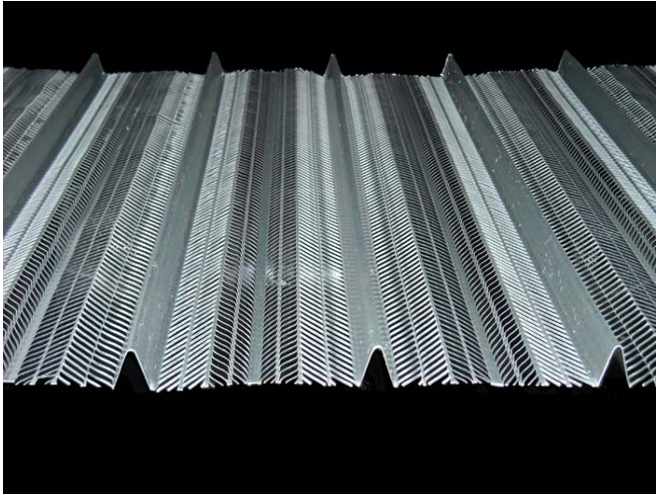
MATERIAL DESCRIPTION

Galvanized Carbon Steel sheets formed by slitting and stretching galvanized sheet steel in a unique way to create alternating solid ribs between the expanded mesh portions all running the length of the sheet. Stay-Form shall be fabricated to the following:

1. solid sheet of metal that is slit and stretched to create a rigid sheet of alternating V-ribs and expanded metal running the length of the sheet.
2. V-ribs are 3/4 inch deep and spaced 3-7/8 inch on center
3. Opening size 1/4-inch x 3.8-inch
4. Weight per square foot galvanized: 0.660 lbs. per square foot.
5. Sheet dimensions 27 inches x 96 inches
6. Packaged 250 sheets per pallet.

REFERENCES

1. ASTM A653 Standard Specification for Steel Sheet, Zinc-Coated (Galvanized) or Zinc-Iron Alloy-Coated (Galvannealed) by the Hot-Dip Process
2. ASTM D1761 Mechanical Fasteners in Wood
3. American Concrete Institute (ACI) ACI 347 Guide to Formwork for Concrete
4. State of California, Department of Transportation (Caltrans), Standard Specifications: Section 51 Concrete Structures



Sheet size is 27 inches x 96 inches with 7 ribs

CUTTING SHEETS

1. Cut sheets using tin snips, hand held grinding wheel, or cut off saw.
2. Multiple sheets can be cut using a circular saw with an abrasive blade.
3. Metal shears may be used to cut or notch.
4. A pointed rebar may be used to penetrate sheets for placing rebar through bulkheads.

INSTALLATION

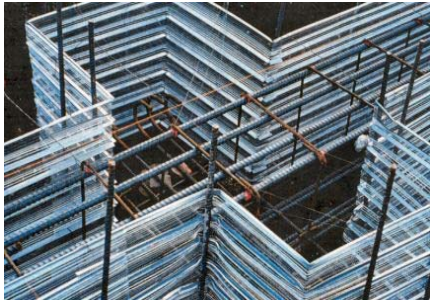
1. A 4-inch to 6-inch minimum lap shall be maintained between running Stay-Form sheets.
2. A 2-rib minimum lap shall be maintained between stacked Stay-Form sheets.
3. All strong backs or walers made of wood or steel shall be selected to support the weight of the concrete pour.
4. Secure Stay-Form to bracing with tie wire, staples or nails.
5. Install 16GA tie wire at every other rib at lap.
6. Secure tie wire around rib and bracing.
7. Bracing is required where sheets lap.
8. Notch ribs to make 90 degree turns.
9. Ribs shall always face into the concrete pour



Pile Cap



Blind Side Wall



Grade Beam

AMICO Stay-Form®
The stay-in-place concrete form

Alabama Metal Industries Corporation
AMICO® January 2019