

Carbon and Stainless Steel Riveted Bar Grating Stair Treads
Project Submittals as manufactured by
ALABAMA METAL INDUSTRIES CORPORATION

Submittal Date:

Contract Number:

Project Name:

Section Number:

Name of Contractor:

All information contained herein is accurate as known at the time of publication. Specifications may change and AMICO reserves the right to change product specifications without notice and without incurring obligations.

ALABAMA METAL INDUSTRIES CORPORATION

3245 Fayette Avenue ♦ Birmingham, AL 35208 ♦ Telephone 800/366-2642 ♦ Facsimile 205/786-6527
email fmayer@gibraltar1.com



RIVETED BAR GRATING STAIR TREADS

18-R-8

PART 1 GENERAL

1.1 SCOPE

- A. Supply and install riveted metal stair treads of the dimensions as noted in the project documents.

1.2 MATERIAL APPLICATION

- A. Stair treads

1.3 BASE MATERIAL SELECTION

- A.

1.4 REFERENCES - Meets or Exceeds

- A. NAAMM MBG 531- Bar Grating Manual
- B. NAAMM MBG 532 - Heavy Duty Metal Bar Grating Manual
- C. ARRA - American Recovery and Reinvestment Act
- D. ASTM Standards referenced in NAAMM Standards
- E. AWS - American Welding Codes

1.5 QUALITY ASSURANCE - Meets or Exceeds

- A. Meets "Buy American Procurement"
- B. Made in the United States of America
- C. AMICO fabricated treads with Quality Control testing process to exceed OSHA - Fixed Industrial Stairs 29CFR1910.24.

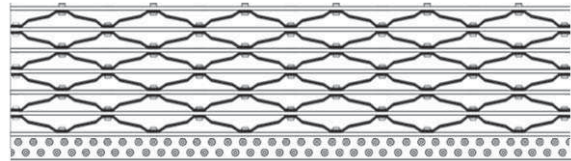
PART 2 PRODUCTS

2.1 MANUFACTURER

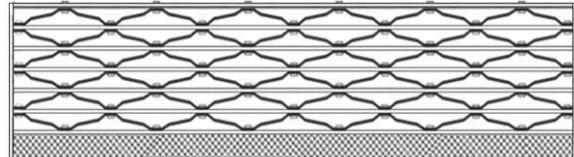
- A. Basis of Design: Metal grating stair treads as produced and distributed by Alabama Metal Industries Corporation, AMICO, 3245 Fayette Avenue, Birmingham, Alabama 35208. 800/366-2642, Tel 205/787-2611 online at www.amico-online.com

2.2 STAIR TREAD DESCRIPTION

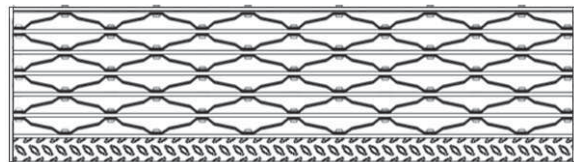
- A. Stair tread construction shall be riveted bar grating type
- B. Stair tread nosing shall be:



AMICO Safety Nosing



Corrugated Aluminum Nosing



Checkered Plate Nosing

- C. Bearing bar and reticulated bar description (bar height x thickness):

- D. Reticulated bar spacing shall be 7-inches on center

- E. Surface condition shall be:

- F. Stair tread width shall be:

- G. Stair tread length shall be:

2.3 FINISH SELECTION

- A.
- B. Custom color shall be:

2.4 FASTENERS

- A. Grating and treads shall be supplied by one source to assure quality control.
- B. Treads shall be secured to stringer by:

All information contained herein is accurate as known at the time of publication. Specifications may change and AMICO reserves the right to change product specifications without notice and without incurring obligations.

ALABAMA METAL INDUSTRIES CORPORATION

3245 Fayette Avenue ♦ Birmingham, AL 35208 ♦ Telephone 800/366-2642 ♦ Facsimile 205/786-6527
email fmayer@gibraltar1.com

RIVETED BAR GRATING STAIR TREADS

18-R-3

PART 1 GENERAL

1.1 SCOPE

- A. Supply and install riveted metal stair treads of the dimensions as noted in the project documents.

1.2 MATERIAL APPLICATION

- A. Stair treads

1.3 BASE MATERIAL SELECTION

- A.

1.4 REFERENCES - Meets or Exceeds

- A. NAAMM MBG 531- Bar Grating Manual
- B. NAAMM MBG 532 - Heavy Duty Metal Bar Grating Manual
- C. ARRA - American Recovery and Reinvestment Act
- D. ASTM Standards referenced in NAAMM Standards
- E. AWS - American Welding Codes

1.5 QUALITY ASSURANCE - Meets or Exceeds

- A. Meets "Buy American Procurement"
- B. Made in the United States of America
- C. AMICO fabricated treads with Quality Control testing process to exceed OSHA - Fixed Industrial Stairs 29CFR1910.24.

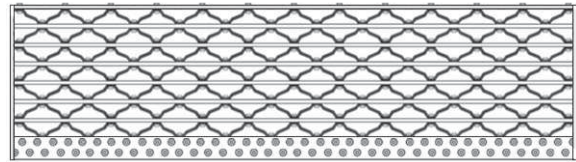
PART 2 PRODUCTS

2.1 MANUFACTURER

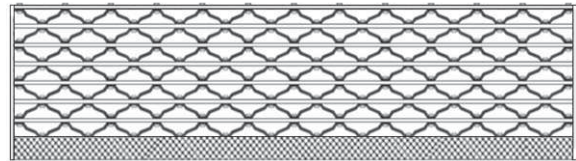
- A. Basis of Design: Metal grating and attachment brackets as produced and distributed by Alabama Metal Industries Corporation, AMICO, 3245 Fayette Avenue, Birmingham, Alabama 35208. 800/366-2642, Tel 205/787-2611 online at www.amico-online.com

2.2 STAIR TREAD DESCRIPTION

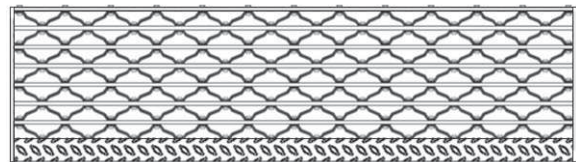
- A. Stair tread construction shall be riveted bar grating type
- B. Stair tread nosing shall be:



AMICO Safety Nosing



Corrugated Aluminum Nosing



Checkered Plate Nosing

- C. Bearing bar and reticulated bar description (bar height x thickness):
- D. Reticulated bar spacing shall be 3-1/2 inches on center
- E. Surface condition shall be:
- F. Stair tread width shall be:
- G. Stair tread length shall be:

2.3 FINISH SELECTION

- A.
- B. Custom color shall be:

2.4 FASTENERS

- A. Grating and treads shall be supplied by one source to assure quality control.
- B. Treads shall be secured to stringer by:



All information contained herein is accurate as known at the time of publication. Specifications may change and AMICO reserves the right to change product specifications without notice and without incurring obligations.

ALABAMA METAL INDUSTRIES CORPORATION

3245 Fayette Avenue ♦ Birmingham, AL 35208 ♦ Telephone 800/366-2642 ♦ Facsimile 205/786-6527
email fmayer@gibraltar1.com





RIVETED BAR GRATING STAIR TREADS 12-R-7

PART 1 GENERAL

1.1 SCOPE

- A. Supply and install riveted metal stair treads of the dimensions as noted in the project documents.

1.2 MATERIAL APPLICATION

- A. Stair treads

1.3 BASE MATERIAL SELECTION

- A.

1.4 REFERENCES - Meets or Exceeds

- A. NAAMM MBG 531- Bar Grating Manual
- B. NAAMM MBG 532 - Heavy Duty Metal Bar Grating Manual
- C. ARRA - American Recovery and Reinvestment Act
- D. ASTM Standards referenced in NAAMM Standards
- E. AWS - American Welding Codes

1.5 QUALITY ASSURANCE - Meets or Exceeds

- A. Meets "Buy American Procurement"
- B. Made in the United States of America
- C. AMICO fabricated treads with Quality Control testing process to exceed OSHA - Fixed Industrial Stairs 29CFR1910.24.

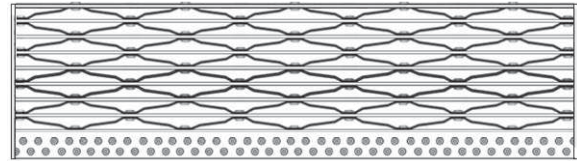
PART 2 PRODUCTS

2.1 MANUFACTURER

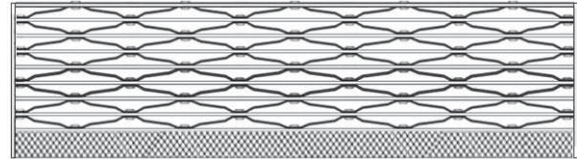
- A. Basis of Design: Metal grating stair treads as produced and distributed by Alabama Metal Industries Corporation, AMICO, 3245 Fayette Avenue, Birmingham, Alabama 35208. 800/366-2642, Tel 205/787-2611 online at www.amico-online.com

2.2 STAIR TREAD DESCRIPTION

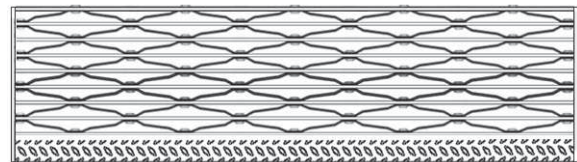
- A. Stair tread construction shall be riveted bar grating type
- B. Stair tread nosing shall be:



AMICO Safety Nosing



Corrugated Aluminum Nosing



Checkered Plate Nosing

- C. Bearing bar and reticulated bar description (bar height x thickness):

- D. Reticulated bar spacing shall be 7-inches on center

- E. Surface condition shall be:

- F. Stair tread width shall be:

- G. Stair tread length shall be:

2.3 FINISH SELECTION

- A.
- B. Custom color shall be:

2.4 FASTENERS

- A. Grating and treads shall be supplied by one source to assure quality control.
- B. Treads shall be secured to stringer by:

All information contained herein is accurate as known at the time of publication. Specifications may change and AMICO reserves the right to change product specifications without notice and without incurring obligations.

ALABAMA METAL INDUSTRIES CORPORATION

3245 Fayette Avenue ♦ Birmingham, AL 35208 ♦ Telephone 800/366-2642 ♦ Facsimile 205/786-6527
email fmayer@gibraltar1.com

RIVETED BAR GRATING STAIR TREADS

12-R-3

PART 1 GENERAL

1.1 SCOPE

- A. Supply and install riveted metal stair treads of the dimensions as noted in the project documents.

1.2 MATERIAL APPLICATION

- A. Stair treads

1.3 BASE MATERIAL SELECTION

- A.

1.4 REFERENCES - Meets or Exceeds

- A. NAAMM MBG 531- Bar Grating Manual
- B. NAAMM MBG 532 - Heavy Duty Metal Bar Grating Manual
- C. ARRA - American Recovery and Reinvestment Act
- D. ASTM Standards referenced in NAAMM Standards
- E. AWS - American Welding Codes

1.5 QUALITY ASSURANCE - Meets or Exceeds

- A. Meets "Buy American Procurement"
- B. Made in the United States of America
- C. AMICO fabricated treads with Quality Control testing process to exceed OSHA - Fixed Industrial Stairs 29CFR1910.24.

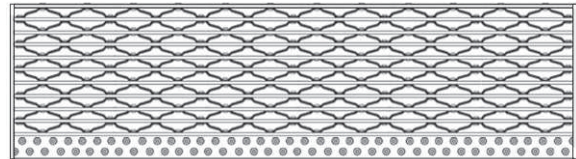
PART 2 PRODUCTS

2.1 MANUFACTURER

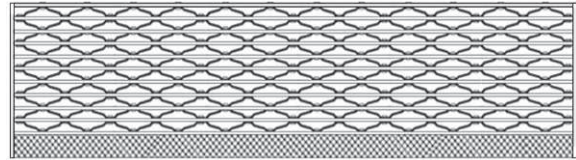
- A. Basis of Design: Metal grating and attachment brackets as produced and distributed by Alabama Metal Industries Corporation, AMICO, 3245 Fayette Avenue, Birmingham, Alabama 35208. 800/366-2642, Tel 205/787-2611 online at www.amico-online.com

2.2 STAIR TREAD DESCRIPTION

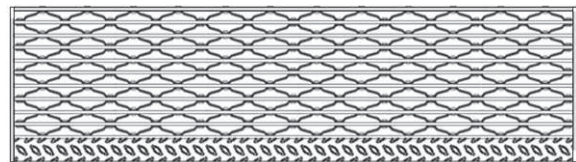
- A. Stair tread construction shall be riveted bar grating type
- B. Stair tread nosing shall be:



AMICO Safety Nosing



Corrugated Aluminum Nosing



Checkered Plate Nosing

- C. Bearing bar and reticulated bar description (bar height x thickness):
- D. Reticulated bar spacing shall be 3-1/2 inches on center
- E. Surface condition shall be:
- F. Stair tread width shall be:
- G. Stair tread length shall be:

2.3 FINISH SELECTION

- A.
- B. Custom color shall be:

2.4 FASTENERS

- A. Grating and treads shall be supplied by one source to assure quality control.
- B. Treads shall be secured to stringer by:



All information contained herein is accurate as known at the time of publication. Specifications may change and AMICO reserves the right to change product specifications without notice and without incurring obligations.

ALABAMA METAL INDUSTRIES CORPORATION

3245 Fayette Avenue ♦ Birmingham, AL 35208 ♦ Telephone 800/366-2642 ♦ Facsimile 205/786-6527
email fmayer@gibraltar1.com

