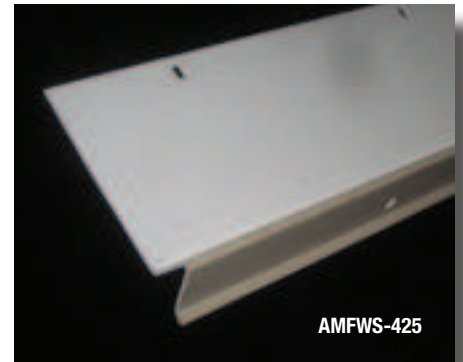


# STUCCO WEEP SCREEDS

**Foundation Weep Scream** provides a straight and true screed surface at the base of stucco walls, while allowing excess moisture to escape the back of the stucco membrane. It is important for the water-resistant paper and metal lath to overlap the nailing flange of the weep screed. Check with local building codes for the proper clearance above grade. Building codes require this bead on framed walls. 10' standard length.

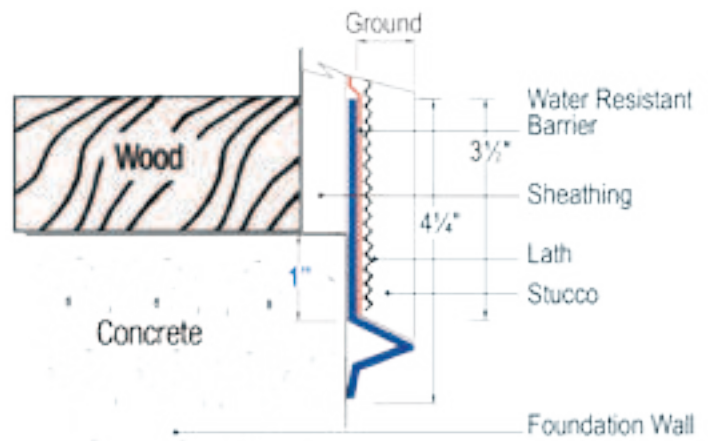
Product No.	Dimensions	Ground	Box Count
AMFWS-425-380	4¼"	¾"	30
AMFWS-425-500*	4¼"	½"	30
AMFWS-425-580*	4¼"	⅝"	30
AMFWS-425-750	4¼"	¾"	30
AMFWS-425-780*	4¼"	⅞"	30

\*Available in standard white, as well as tan, brown or gray (on exposed areas only).



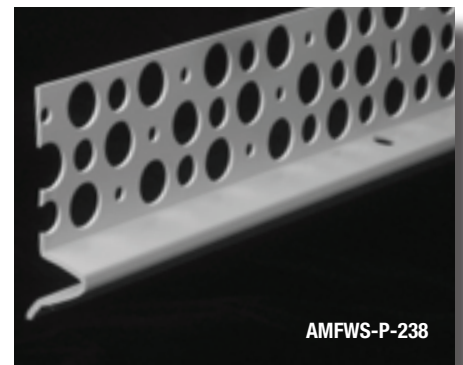
part shown here in TAN color

AMFWS-425



**Wall Scream** uses the same profile as the traditional Foundation Weep Scream, except this version is produced with a shorter (2 3/8"), perforated attachment flange. This attachment flange can also be produced solid, without perforations. Contact AMICO for pricing and lead time. The Wall Scream is ideal for stucco-to-block terminations, roof-to-wall transitions, and similar applications.

Product No.	Nail Flange	Ground	Box Count
AMFWS-P-238-380	1 5/8"	¾"	60
AMFWS-P-238-500	1 5/8"	½"	60
AMFWS-P-238-580	1 5/8"	⅝"	60
AMFWS-P-238-750	1 5/8"	¾"	60
AMFWS-P-238-780	1 5/8"	⅞"	60



AMFWS-P-238

