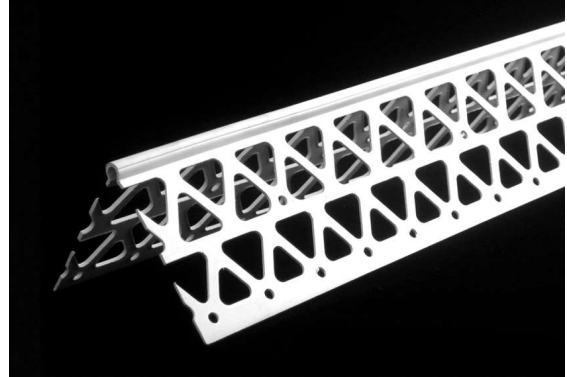


VINYL CORNER BEAD Regular Equal Length Leg

FOR STUCCO AND PLASTER INSTALLATIONS
AMICO Vinyl Corner Bead reinforces exterior stucco corners with durable, straight, and rust free vinyl corners.

The addition of stiffener ribs and slotted nailing holes makes these products easy and quick to install level and straight.

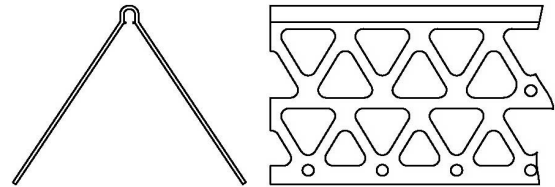


AMX1 2½" Leg Corner Bead

Product Submittal	Product Number	Dimensions
	AMX1	2½" x 2½"
	AMX2	2¾" x 2¾"
Standard Length is 10-Feet		

FINISH

The finish on all AMICO vinyl stucco accessories is compatible with standard lathing and paint finishes.



Vinyl Equal Leg Corner Bead

REFERENCES

- PVC complies with ASTM D4316 and ASTM D1784
- Meets IBC 2510 and IBC 2511
- Refer to ASTM C1063 for support spacing, lath selection, fastener selection and further information regarding the proper installation of metal lath and accessories.
- Meets Buy American Procurement Requirements
- Made in the United States of America
- LEED: 100% post industrial recyclable content

All butt joints, intersections, and ends should be joined, embedded and sealed in a quality sealant compatible with exterior paint finish.

All information contained herein is accurate as known at the time of publication. Specifications may change and AMICO reserves the right to change product specifications without notice and without incurring obligations.

ALABAMA METAL INDUSTRIES CORPORATION
3245 Fayette Avenue ♦ Birmingham, AL 35208 ♦ Telephone 800/366-2642
Facsimile 205/786-6527

VINYL CORNER BEAD Regular Equal Length Leg

FOR STUCCO AND PLASTER INSTALLATIONS
AMICO Vinyl Corner Bead reinforces exterior stucco corners with durable, straight, and rust free vinyl corners.

The addition of stiffener ribs and slotted nailing holes makes these products easy and quick to install level and straight.

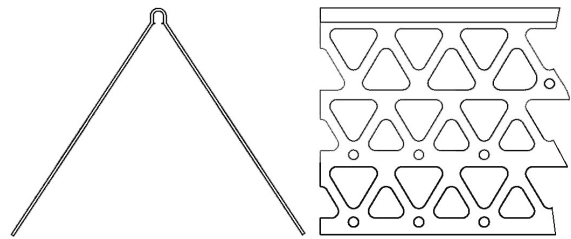
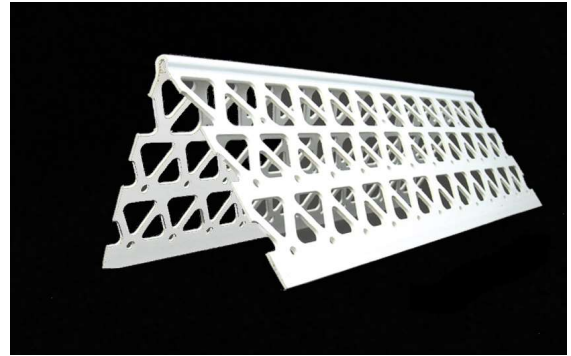
Product Submittal	Product Number	Dimensions
	AMX1-WF	4" x 4"
Standard Length is 10-Feet		

FINISH

The finish on all AMICO vinyl stucco accessories is compatible with standard lathing and paint finishes.

REFERENCES

PVC complies with ASTM D4316 and ASTM D1784
Meets IBC 2510 and IBC 2511
Refer to ASTM C1063 for support spacing, lath selection, fastener selection and further information regarding the proper installation of metal lath and accessories.
Meets Buy American Procurement Requirements
Made in the United States of America
LEED: 100% post industrial recyclable content



AMX1-WF 4" Leg Corner Bead

All butt joints, intersections, and ends should be joined, embedded and sealed in a quality sealant compatible with exterior paint finish.

All information contained herein is accurate as known at the time of publication. Specifications may change and AMICO reserves the right to change product specifications without notice and without incurring obligations.

ALABAMA METAL INDUSTRIES CORPORATION

3245 Fayette Avenue ♦ Birmingham, AL 35208 ♦ Telephone 800/366-2642
Facsimile 205/786-6527

VINYL CORNER BEAD Irregular Length Leg

FOR STUCCO AND PLASTER INSTALLATIONS
AMICO Vinyl Corner Bead reinforces exterior stucco corners with durable, straight, and rust free vinyl corners.

The addition of stiffener ribs and slotted nailing holes makes these products easy and quick to install level and straight.

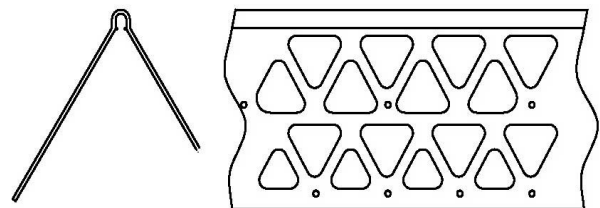
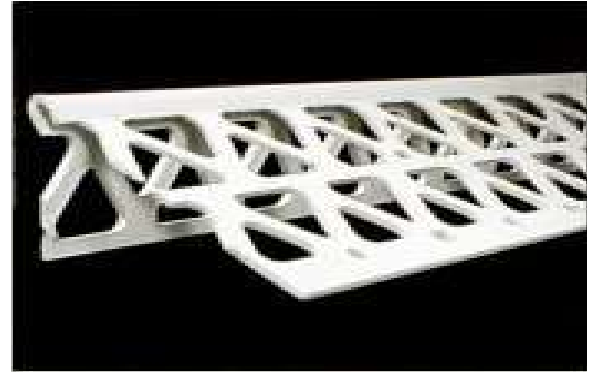
Product Submittal	Product Number	Dimensions	Leg "A"	Leg "B"
	AMX1-IR	2 1/2" x 1 1/2"	2 1/2"	1 1/2"
Standard Length is 10-Feet				

FINISH

The finish on all AMICO vinyl stucco accessories is compatible with standard lathing and paint finishes.

REFERENCES

PVC complies with ASTM D4316 and ASTM D1784
Meets IBC 2510 and IBC 2511
Refer to ASTM C1063 for support spacing, lath selection, fastener selection and further information regarding the proper installation of metal lath and accessories.
Meets Buy American Procurement Requirements
Made in the United States of America
LEED: 100% post industrial recyclable content



Vinyl irregular Length Leg Corner Bead

All butt joints, intersections, and ends should be joined, embedded and sealed in a quality sealant compatible with exterior paint finish.

All information contained herein is accurate as known at the time of publication. Specifications may change and AMICO reserves the right to change product specifications without notice and without incurring obligations.

ALABAMA METAL INDUSTRIES CORPORATION
3245 Fayette Avenue ♦ Birmingham, AL 35208 ♦ Telephone 800/366-2642
Facsimile 205/786-6527