

X-66 CASING BEAD

Zinc Alloy Expanded Metal Plaster Stop

FOR STUCCO AND PLASTER INSTALLATIONS

Casing Bead is used to terminate plaster or stucco around doors, windows and any other through wall penetration. Select the proper ground to aid in screeding the proper thickness of stucco.

Product Submittal	Product Number	Ground
	X-66	3/8"
	X-66	1/2"
	X-66	5/8"
	X-66	3/4"
	X-66	7/8"
	X-66	1"
	X-66	1 1/4"
	X-66	1 1/2"
Standard Package Length is 10-ft.		

TOLERANCES

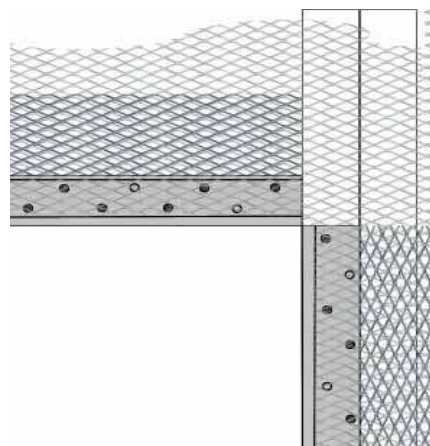
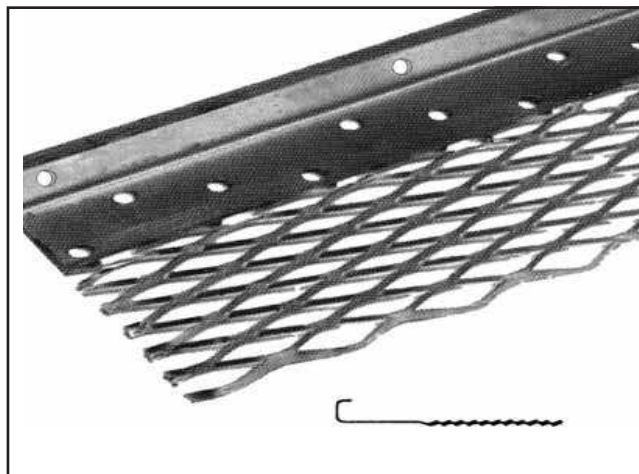
ASTM C1063, Table 1 defines the minimum allowable thickness of lathing accessories

Materials

Zinc Alloy

DESCRIPTION

One piece casing bead with a 3-inch wide expanded metal mesh flange. Pre-drilled for proper attachment to wood and metal framing members.



Refer to ASTM C1063 for support spacing, lath selection, fastener selection and further information regarding the proper installation of metal lath.

ASTM and most codes require hot dipped galvanized lath for all exterior applications.

Meets Buy American Procurement Requirements.
Made in the United States of America

All information contained herein is accurate as known at the time of publication. Specifications may change and AMICO reserves the right to change product specifications without notice and without incurring obligations.

ALABAMA METAL INDUSTRIES CORPORATION

3245 Fayette Avenue ♦ Birmingham, AL 35208 ♦ Telephone 800/366-2642 ♦ Facsimile 205/786-6527
email fmayer@gibraltar1.com