

X-66 CASING BEAD

Galvanized Steel Expanded Metal Plaster Stop

FOR STUCCO AND PLASTER INSTALLATIONS

Casing Bead is used to terminate plaster or stucco around doors, windows and any other through wall penetrations. Select the proper ground to aid in screeding the proper thickness of stucco.

| Product Submittal | Product Number | Ground |
|-----------------------------------|----------------|-------------------|
| | X-66 | $\frac{3}{8}$ " |
| | X-66 | $\frac{1}{2}$ " |
| | X-66 | $\frac{5}{8}$ " |
| | X-66 | $\frac{3}{4}$ " |
| | X-66 | $\frac{7}{8}$ " |
| | X-66 | 1" |
| | X-66 | 1 $\frac{1}{4}$ " |
| | X-66 | 1 $\frac{1}{2}$ " |
| Standard Package Length is 10-ft. | | |

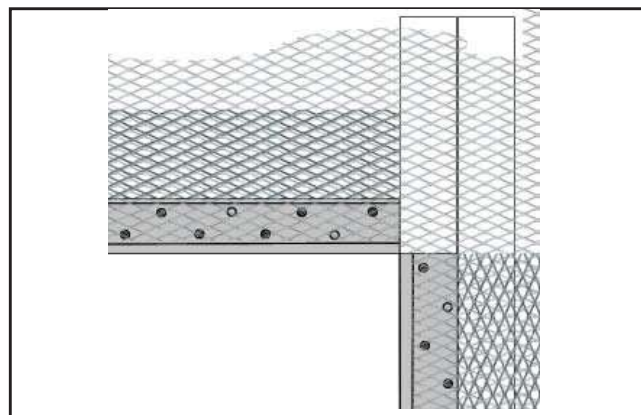
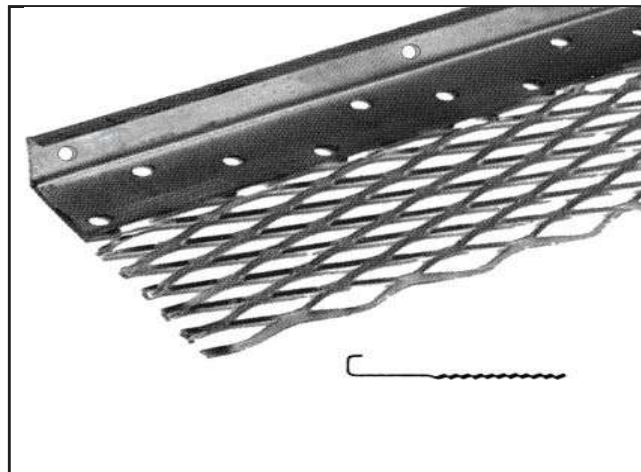
DESCRIPTION

One piece casing bead with a 3-inch wide expanded metal mesh flange.

MATERIALS

G60 hot dip galvanized sheet steel to ASTM A653 with a minimum thickness 0.0172-inch prior to galvanizing as required by ASTM C1063 and C1861.

AMICO RECOMMENDS THE USE OF ACCESSORIES MADE FROM ZINC ALLOY, PVC AND OR STAINLESS STEEL MATERIALS FOR ALL EXTERIOR APPLICATIONS.



COMPLIANCE CRITERIA

Compliant with the following:

International Building Code - (IBC)
 International Residential Code - (IRC)
 Florida Building Code (FBC) Building
 Florida Building Code (FBC) Residential
 California Building Code (CBC)
 California Residential Code (CRC)

Made in the United States of America

LEED: both pre and post industrial recyclable content are available – contact the manufacturer.

All information contained herein is accurate as known at the time of publication. Specifications may change and AMICO reserves the right to change product specifications without notice and without incurring obligations.

ALABAMA METAL INDUSTRIES CORPORATION

3245 Fayette Avenue ♦ Birmingham, AL 35208 ♦ Telephone 800/366-2642 ♦ Facsimile 205/786-6527