

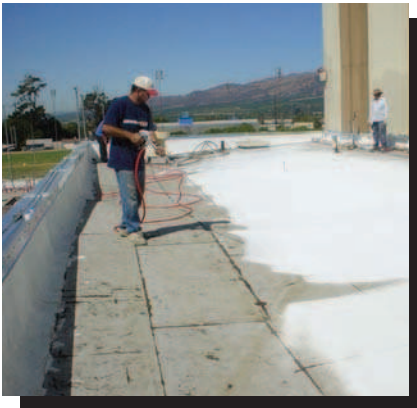


#232 INSTA-KOTE™ MB



ULTRA COOL PREMIUM ELASTOMERIC ROOF COATING

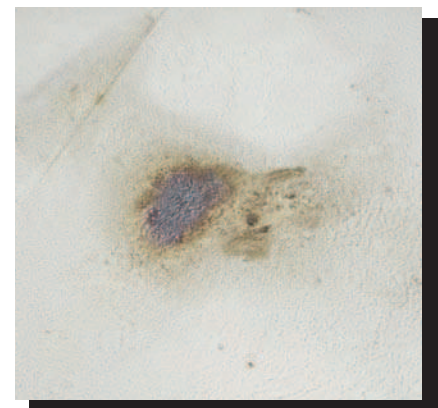
APOC® #232 INSTA-KOTE™ MB is premium, patent pending elastomeric roof coating designed for use over a number of roof systems. APOC® #232 INSTA-KOTE™ MB is manufactured using a proprietary blend of Lipacryl® resin and patent pending "Bleed-Blok™" and "Film-Gard™" surfactants. These surfactants are critical in the formation of high strength molecular bonds and create a continuous polymer matrix that stops asphalt particles from migrating through the coating and bleeding through the surface. In addition, these surfactants assist in creating a tighter molecular structure and stronger surface film improving water resistance and life expectancy of roof coating.



IMMEDIATE APPLICATION FOR NEW CONSTRUCTION






IDEAL FOR SEAMS AND TOUCH UP WORK



PREVENTS BLEED THROUGH OF ASPHALT PARTICLES

APOC®, "TESTED BEST" BY LEADING ROOFING CONTRACTORS

- Ideal for New Construction
- Blocks Asphalt Bleed-Through
- Remarkable Adhesion to MB Surfaces
-  Listed Product
- Exceeds  Performance Levels
- Helps Reduce Interior Temperatures
- Reduces Ponding Water Failures

		Initial	Weathered
			
Solar Reflectance		90%	Pending
Thermal Emittance		0.89	Pending
ASTM D6083 Technical Data			
Property	Method	Requirement	Result
Initial Tensile Strength (psi)	ASTM D2370	200 Minimum	≥250
Initial Elongation (%)	ASTM D2370	100 Minimum	≥350
1000 Hour Accelerated Weathering	ASTM D4798	No Cracking or Checking	No Cracking or Checking
Elongation After Accelerated Weathering (%)	ASTM D2370	100 Minimum	125
Permeance (perms)	ASTM D1653	50 Maximum	<5

DON'T REPLACE IT. RESTORE IT.™

FL-1050

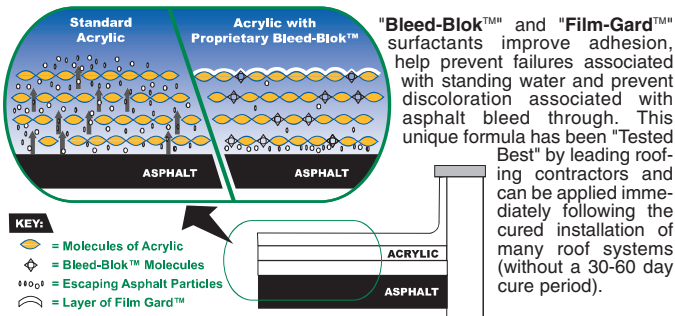


AP 232

INSTA-KOTE™ MB Data Sheet

ULTRA COOL PREMIUM ELASTOMERIC ROOF COATING

DESCRIPTION: APOC® 232 INSTA-KOTE™ MB is premium, patent pending elastomeric roof coating designed for use over a number of roof systems (listed below). APOC 232 Insta-Kote™ MB is manufactured using a proprietary blend of Lipacryl® resin and patent pending "Bleed-Blok™" and "Film-Gard™" surfactants. These surfactants are critical in the formation of high strength molecular bonds and create a continuous polymer matrix that stops asphalt particles from migrating through the coating and bleeding through the surface. In addition, these surfactants assist in creating a tighter molecular structure and stronger surface film improving water resistance and life expectancy of roof coating.



APOC 232 Insta-Kote™ MB is ideal for use over standard cap sheet and APP or SBS modified membranes on new construction, tear-off's and recover applications, as well as on emulsion and acrylic restoration systems.

PREPARATION: All surfaces must be dry and free of dust, dirt, oil, loose granules, gravel, peeling paint and all other foreign matter. Rusty metal must be cleaned with a wire brush and primed before application of this product. Surfaces with mildew growth or stains must be cleaned with a bleach solution (2 parts water to one part bleach) prior to applying this product. Rinse thoroughly. Pressure washing entire surface is recommended for best results (use only a wide fan tip - do not allow stream to tear into roof surface). Repair all leaks and cracks with White Woven Glass Fabric and White Roof Patch. Allow to cure 48 hours before application of roof coating. Surfaces previously coated with aluminum, asphalt or tar should be allowed to cure for a minimum of one summer season prior to coating with this product. Do not heat or thin. DO NOT APPLY IF RAIN IS EXPECTED WITHIN 36 HOURS.

FOR BEST RESULTS: On some smooth modified membranes, apply prime coat of APOC® 300 or APOC® 337.

APPLICATION: Protective clothing and eyewear should be used during application of this product. Always apply on a clear, warm sunny day. Apply in morning hours to allow maximum cure time. Temperatures must be above 60°F (for 24 hours) and rising, but not above 110°F. Drying conditions are rated at a maximum relative humidity of 50%. Apply with a 3/4" nap exterior paint roller or professional airless sprayer. First, apply one coat over all seams and joints. Allow to cure for one hour or until dry, then apply two (2) uniform coats over entire surface, avoiding excessive rolling. Two full coats are needed for all applications. Dries for recoat in 4-8 hours and fully cures in 48 hours at 77°F & 50% relative humidity. Higher humidity, thicker films, poor air flow and lower temperatures will increase dry times. Coverage rate is 1 1/2 gallons per square, per coat. Two coats are required for a total application of 3 gallons per square. This product will assist adhesion in "Bird Bath Areas" however it will not hold up under ponding as defined by NRCA.

SPRAY INFO: 1500-2500 PSI .030 - .040, 1-3 GPM.

NOTE: If roof becomes hot (over 120° F) during application, lightly mist roof surface with water spray to prevent coating from drying too fast. Remove any excess water and puddles prior to coating. If roof surfaces become soiled as they age, due to the elements, Elastomeric can be cleaned with a mild water and bleach solution. Excessive scrubbing should be avoided. If color tinting is desired, a typical addition of 3-4 ounces per gallon of Universal colorant can be added, which will result in light pastel colors. Color tinting will disclaim warranty.

CLEAN-UP: Clean tools with soap and water.

©2006 Gardner Asphalt Corporation
Manufactured by / Fabricado por:
Gardner Asphalt Corporation
P.O. Box 5449, Tampa, FL 33675

See MSDS for more info

TYPICAL PHYSICAL & PERFORMANCE CHARACTERISTICS

Weight Per Gallon	10.54 lbs.
Solids by Weight	62% ± 1
Solids by Volume	52% ± 1
Viscosity (ASTM D-2697)	110 ku
Elongation (ASTM D-562)	≥ 350%
Tensile Strength (ASTM D-2370)	≥ 250 psi
Elongation, post weathering (%)	125%
Reflectivity (ASTM C-523)	> 90% (CRRC)
Emissivity	.89
Permeability (ASTM D-1653)	< 5 perms
Adhesion to Polyurethane Foam	3.8 lbs./in.
Combustible Solvents	None
Consistency	Brush, Roller or Spray
Cure Time (50% Relative Humidity, 70°F)	2-4 hours
Full Cure (50% Relative Humidity, 70°F)	24-48 hours
Application Temperatures	55° F and rising
Flammability	N/A (water based)
Clean-up Tools	Warm water, soap

Approx. Shipping Weights: (Note: All approx. weights include container.)

5 gallons (18.9L)	55.0 lbs.
55 drums (208.2L)	630 lbs.

PRECAUTIONS: Do not store at temperatures below 50°F. Keep closed when not in use. When transporting this product, ensure that lid is tight and pail secure and upright. Do not allow pail to tumble as this may cause lid to loosen and leakage to occur. Do not transport on passenger seats or inside the passenger compartment of any vehicle. Store product in the cargo area of vehicle, and secure over protective cloths to prevent damage due to accidental spills. The manufacturer also disclaims liability for flat surface application where poor drainage or ponding of water may prevail. Do not reuse empty containers. Dispose of in an environmentally acceptable manner. Do not use in drinking water or food systems. Do not allow to freeze.

**DANGER! HARMFUL OR FATAL IF SWALLOWED.
EYE, SKIN AND RESPIRATORY IRRITANT.
USE WITH ADEQUATE VENTILATION
KEEP OUT OF THE REACH OF CHILDREN.**

If swallowed DO NOT induce vomiting. Call physician immediately. In case of: Eye contact-flush with plenty of warm water. Skin contact- wash thoroughly with soap and water. Irregular or stopped breathing- administer oxygen, give artificial respiration. Get medical attention (immediately). Avoid prolonged breathing of vapor or spray mist. (NIOSH/MSHA TC 23C or equivalent). Seal container when not in use.

CALIF. PROP. 65 • CHEMICAL WARNING (CALIFORNIA HEALTH AND SAFETY CODE #25249.5 ET SEQ). WARNING: This product contains chemicals known to the State of California to cause cancer, birth defects or reproductive harm. Use proper protection and adequate ventilation, when using product.

VOC/VOS - 11 g/l max. (0.9 lbs./gal.)
Water CAS# 7732-18-5
Latex Polymer CAS# Mixture
Titanium Dioxide CAS# 13463-67-7
Calcium Carbonate CAS# 1317-65-3
Ethylene Glycol CAS# 107-21-1
Product is asbestos free.



WARRANTY AND DISCLAIMER:

For limited warranty and disclaimer information, contact the Gardner Asphalt corporate office at 1-800-237-1155.



Gardner Asphalt Corporation • P.O. Box 5449 • Tampa, Florida 33675-5449

Phone: (813) 248-2101 • Fax (813) 248-6768 • www.gardnerasphalt.com