



## **Waterproof & Protective Coatings**

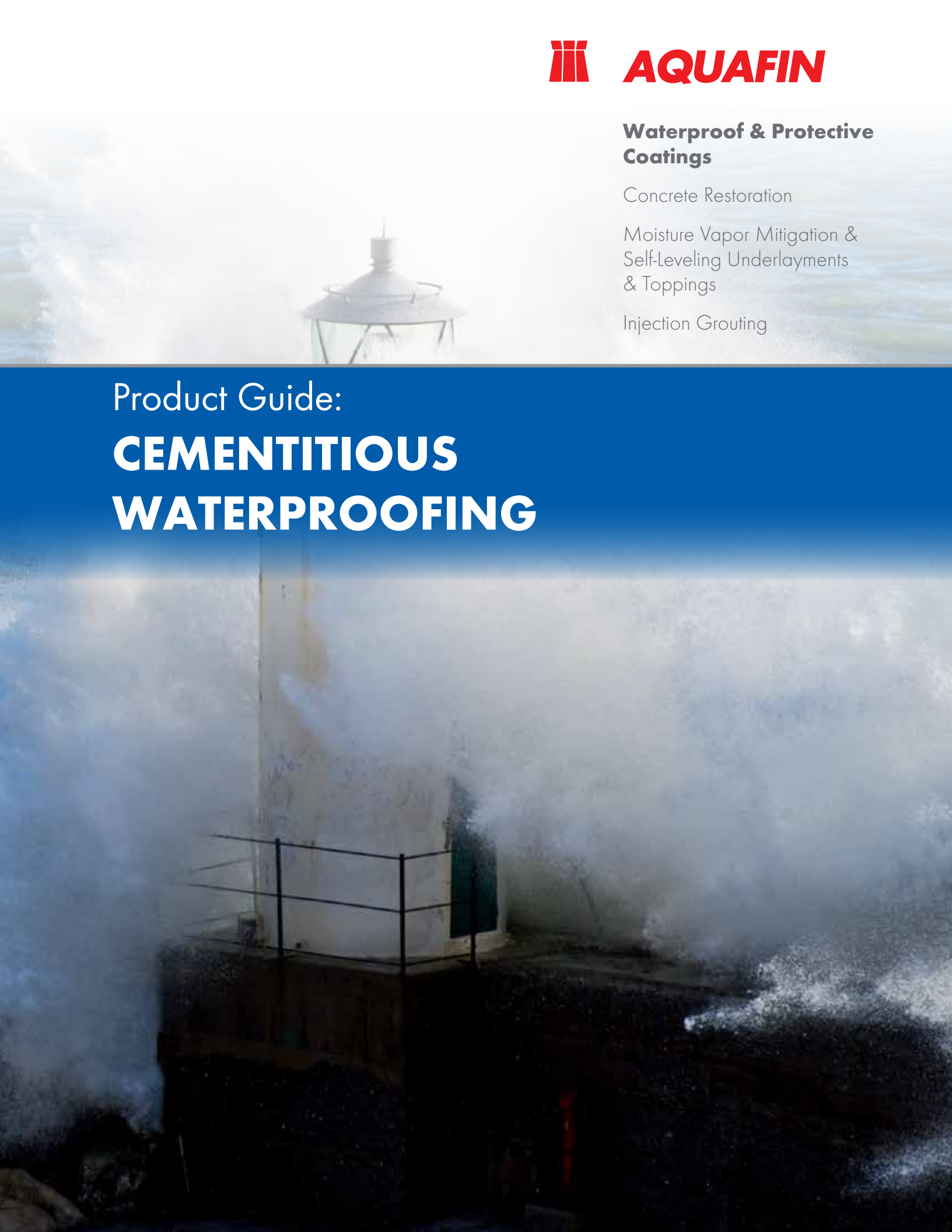
Concrete Restoration

Moisture Vapor Mitigation &  
Self-Leveling Underlayments  
& Toppings

Injection Grouting

Product Guide:

# **CEMENTITIOUS WATERPROOFING**



# Waterproof, protective coatings

Concrete is a porous substrate, prone to water infiltration and damage. By applying waterproof and protective coatings, concrete and many other building materials can be kept in service much longer.

## Crystalline

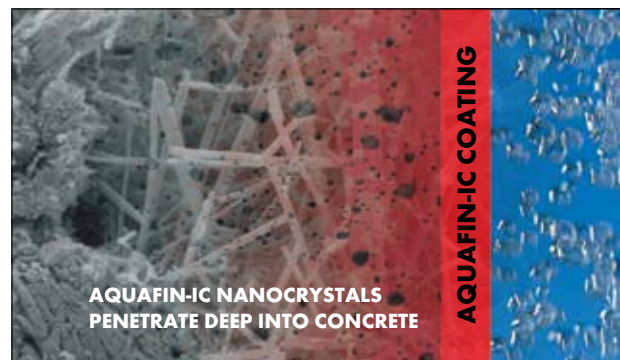
**AQUAFIN-IC** is a state of the art coating system, fortified with Aquafin's advanced crystalline chemistry, designed to waterproof and protect concrete substrates.

The innovative crystalline technology within AQUAFIN-IC reacts with moisture and free lime, a natural by-product of the cement hydration process. The reaction creates millions of nanocrystals which grow throughout the concrete matrix. As these crystals form, they fill and block the concrete's capillary structure, protecting it from further water damage.

The waterproofing properties stay intact, even if the coating is partially removed or small cracks develop after the application. **AQUAFIN-IC is the permanent solution you can count on!**

### SYSTEM COMPONENTS

MORTAR-IC, PLUG-IC



### TYPICAL APPLICATION

- Below grade interior foundation walls
- Elevator pits
- Water and waste water treatment plants
- Slurry walls

## Cementitious

**AQUAFIN-1K** is an easy to use, single component, polymer modified, waterproof and protective coating for many substrates. It mixes with water and can be brushed, troweled or sprayed and comes in either white or gray. AQUAFIN-1K is resistant to negative side hydrostatic pressure, making it ideal for interior waterproofing of below grade foundation walls.

### TYPICAL APPLICATION

- Below grade interior foundation walls
- Parking garages
- Basements
- Water and waste water treatment plants





# Flexible Cementitious

**AQUAFIN-2K/M** is a two-component, flexible, protective and waterproof coating, ideal for sealing and coating a wide variety of structures. With up to 70% elongation, it is able to withstand one-time substrate movement and bridge cracks up to  $\frac{1}{16}$ ". These properties make it ideal for waterproofing under tiles and stucco, coating facades, and protecting water tanks and cisterns.

## SYSTEM COMPONENTS

JOINT SEALING TAPE, CRACK REPAIR TAPE

## TYPICAL APPLICATIONS

- Building facades
- Exterior foundations
- Plaza decks
- Balconies
- Mechanical rooms

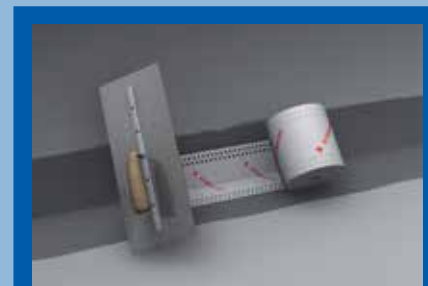


## CONSTRUCTION TERMS DEFINED! Elastomeric vs Flexible

When referring to coatings in the construction industry it is easy to interchange and confuse the two meanings! However, the terms are typically referring to very different properties, and therefore it is important to know the difference when selecting materials.

**Elastomeric** refers to materials that are able to resume their original shape when a deforming force is removed or subjected to continuous movement (such as acrylic elastomerics, urethanes, asphaltic rubbers and other synthetics). These products are designed to bridge moving and expanding joints without cracking, much like a rubber band!

**Flexible** refers to coatings - such as cement based products like AQUAFIN-2K/M - that are capable of being bent or flexed, but will not resume their original shape when subjected to continuous movement. In other words, these coatings typically withstand one-time movement such as a crack initially forming, but if the crack continues to expand and contract, the coating will most certainly crack as well.



**JOINTSEALING TAPE-2000** can be used to reinforce **AQUAFIN-2K/M** to minimize cracks from telegraphing.

# Cross Reference Chart

Use the chart below to help determine which product best fits the demands of your waterproofing project. Full technical information is available online on the individual product Technical Data Sheets (TDS).

		AQUAFIN-1C	AQUAFIN-1K	AQUAFIN-2K/M
<b>PHYSICAL PROPERTIES</b>	Withstands negative side hydrostatic pressure	✓	✓	
	Withstands positive side hydrostatic pressure	✓	✓	✓
	NSF/ANSI 61 approved for potable water	✓	✓	✓
	Can be painted or covered with tiles		✓	✓
	Can be tinted			✓
	Polymer modified		✓	✓
	Breathable	✓	✓	✓
	Zero VOC, qualifies for LEED credits	✓	✓	✓
	Crystalline enhanced	✓		
<b>SUITABLE SUBSTRATES</b>	Concrete	✓	✓	✓
	Masonry / CMU		✓	✓
	Brick		✓	✓
	Stone		✓	✓



AQUAFIN, Inc.  
 Triumph Industrial Park  
 505 Blue Ball Rd., #160  
 Elkton, MD 21921

Toll Free: 1-866-AQUAFIN  
 web: [www.aquafin.net](http://www.aquafin.net)



Aquafin, Inc. is a member of the **SCHOMBURG** Group