



# CONCRETE REPAIR

High performance repair mortars, versatile enough to tackle any job



[www.aquafin.net](http://www.aquafin.net)



# Concrete repair

Concrete deteriorates over time as it is exposed to the elements, freeze/thaw cycles, submerged or in contact with water and subjected to abrasion and other factors. AQUAFIN Inc. has been in the waterproofing and concrete repair market for more than 30 years and offers an advanced full systems approach to concrete repair and restoration.

## **MORTAR-Crete-CI**

Fully extended, pourable/pumpable, concrete mix with integral corrosion inhibitor

- Factory blended, quality controlled mix design
- Excellent workability with long application time
- Very easy to use on "form and pour" applications
- Pre-extended: Eliminates risk of reactive aggregate

## **MORTAR-Screed CI**

One-part, polymer-modified, concrete screed and repair mortar with integral corrosion inhibitor

- For screed repairs and overlays up to 5" neat
- Fiber reinforced
- Low shrinkage
- Wide consistency range from semi-dry to plastic

## **MORTAR-QuickPatch**

One-component, rapid setting horizontal patching mortar and resurfacer

- Featheredge to 3" (75mm)
- Natural gray to blend with existing concrete
- For interior and exterior use
- Outstanding workability and ease of placement
- Fast setting

## **REBAR PRIMER/BOND-CI**

Cementitious bonding agent with integral corrosion inhibitor

- Single component - mixes with water only
- Extended pot life and contact time
- Resistant to penetration of water and chlorides
- Extended contact time allowing for repair mortars up to 3 days after application

## **MORTAR-40 CI**

One-component, cementitious, pumpable structural repair mortar

- Up to 1.5" (40 mm) vertical application per layer
- Up to 4" (100 mm) horizontal application per layer
- Shrinkage compensated
- Can be used for "form and pour" applications
- NSF/ANSI 61 potable water certified by WQA

## **MORTAR-V/O CI**

One-component, non-sag, vertical and overhead concrete repair mortar with integral corrosion inhibitor

- Up to 2" (50 mm) without forming
- Very low sag - excellent "hang" characteristics
- Low shrinkage
- Excellent workability - can be sculpted and shaved with ease

## **MORTAR-LN**

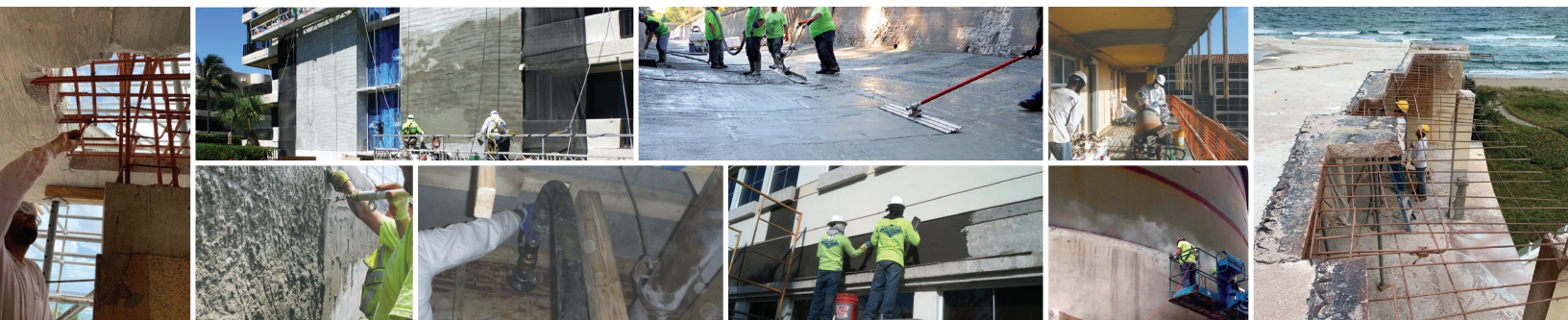
Universal waterproofing, repairing and lining mortar

- Polymer modified
- Waterproof at 1/4" thick
- NSF/ANSI 61 potable water certified by WQA
- Trowel or spray application

**Full System Approach:** Protect your repairs with AQUAFIN-1K and AQUAFIN-2KM cementitious waterproof coatings

AQUAFIN-1K: single component, polymer modified, waterproof and protective coating resistant to negative side hydrostatic pressure.

AQUAFIN-2K/M: two-component, flexible, protective and waterproof coating, with up to 70% elongation, able to withstand one-time substrate movement and bridge cracks up to 1/16".



## Crystalline Enhanced Technology

### **MORTAR-IC**

One-component, fast setting waterproof repair and sealing mortar

### **PLUG-IC**

Fast setting, cementitious waterstop and patching mortar

### **MORTAR-Crete-Crystalline**

Fully extended, pourable/pumpable, concrete mix

Aquafin's advanced crystalline technology, which actively works with the free lime in cement to grow crystals throughout the concrete capillary structure, greatly reduces the passage of moisture through the repair material. This active crystalline reaction will continue to occur for the life of the repair, as long as water is present. Aquafin has a full line of crystalline enhanced repair mortars to complement the AQUAFIN-IC crystalline coating system.